



State of Rhode Island
Coastal Resources Management Council
Oliver H. Stedman Government Center
4808 Tower Hill Road, Suite 3
Wakefield, RI 02879-1900

(401) 783-3370
Fax (401) 783-2069

PUBLIC NOTICE

File Number: MODIFICATION: 2022-03-032 Date: December 27, 2022

This office has under consideration the application of:

Narragansett Bay Commission
Attn: Richard Bernier
One Service Road
Providence, RI 02905

for a State of Rhode Island Assent to construct and maintain: *Modify CRMC Assent 2022-03-032, to include an additional 35,000 cubic yards of tunnel construction material to reuse at the Bucklin Point South Landfill. Material to be used in this activity is crushed rock material generated from construction on the Pawtucket tunnel. The additional material will be incorporated into the forested slope east of the South Landfill and graded to direct stormwater to riprap swales. Only material meeting Rhode Island Department of Environmental Management Direct Exposure Criteria, demonstrated through sampling and analysis, will be used in the forested slope area. This will bring the total amount of tunnel construction material to 100,000 cubic yards at the South Landfill (previously approved was 65,000 cubic yards). This modification will allow NBC to maximize the use of their property for material reuse, reducing the amount of material needed to be trucked offsite. There is no change in the permitted plans for the North Landfill.*

Project Location:	102 Campbell Avenue
City/Town:	East Providence
Plat/Lot:	302 / 1
Waterway:	Seekonk River

Plans of the proposed work can be requested at Cstaff1@crmc.ri.gov.

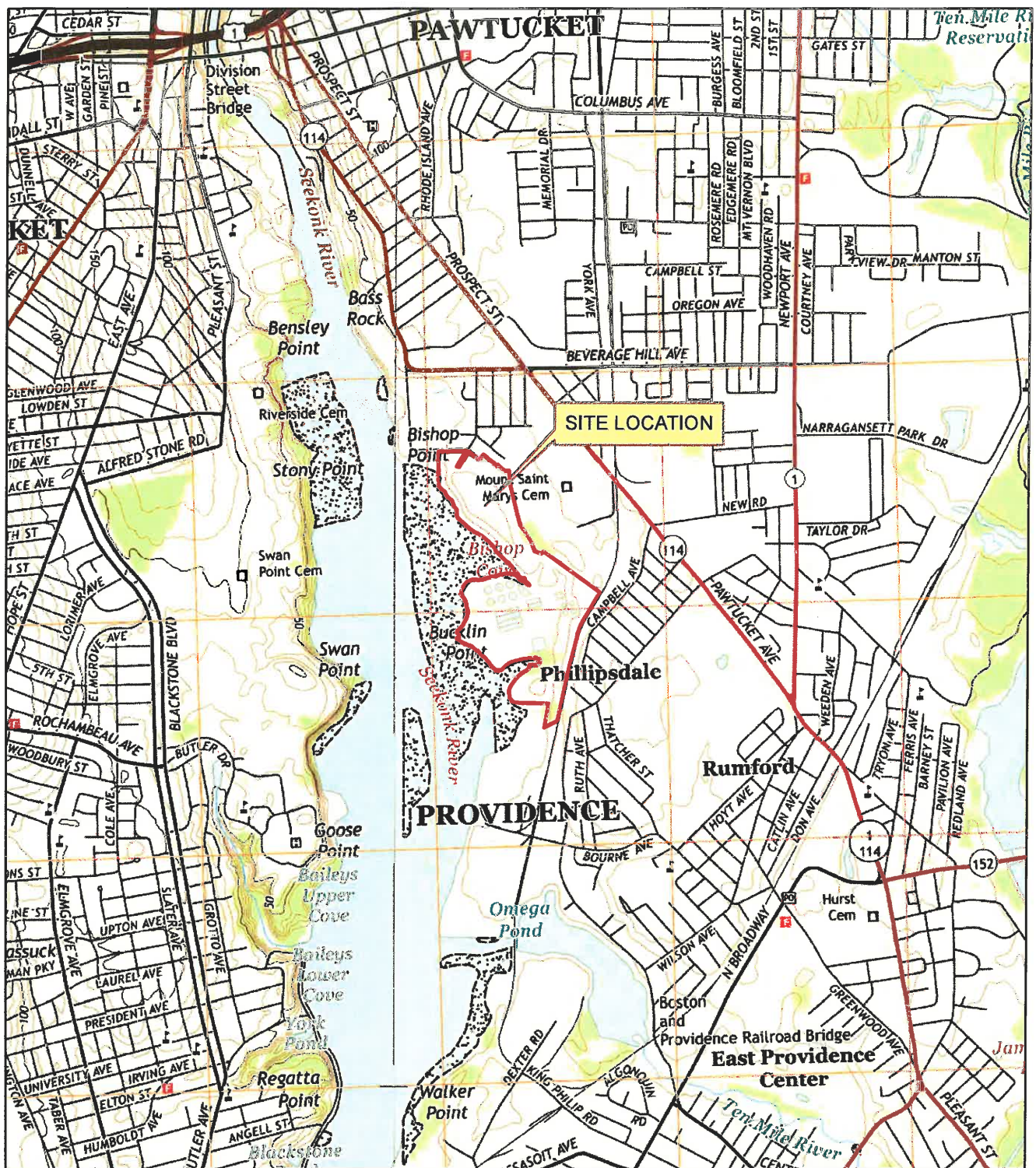
In accordance with the Administrative Procedures Act (Chapter 42-35 of the Rhode Island General Laws) you may request a hearing on this matter.

You are advised that if you have good reason to enter protests against the proposed work it is your privilege to do so. It is expected that objectors will review the application and plans thoroughly, visit site of proposed work if necessary, to familiarize themselves with the conditions and cite what law or laws, if any, would in their opinion be violated by the work proposed.

If you desire to protest, you must attend the scheduled hearing and give sworn testimony. A notice of the time and place of such hearing will be furnished you as soon as possible after receipt of your request for hearing. If you desire to request a hearing, to receive consideration, it should be in writing (**with your correct mailing address, e-mail address and valid contact number**) and be received at this office on or before January 27, 2023.

Please email your comments/hearing requests to: cstaff1@crmc.ri.gov; or mail via USPS to: Coastal Resources Management Council; O. S. Government Center, 4808 Tower Hill Road, Rm 116; Wakefield, RI 02879.

/lat



SITE LOCATION MAP

SCALE: 1"=2,000'



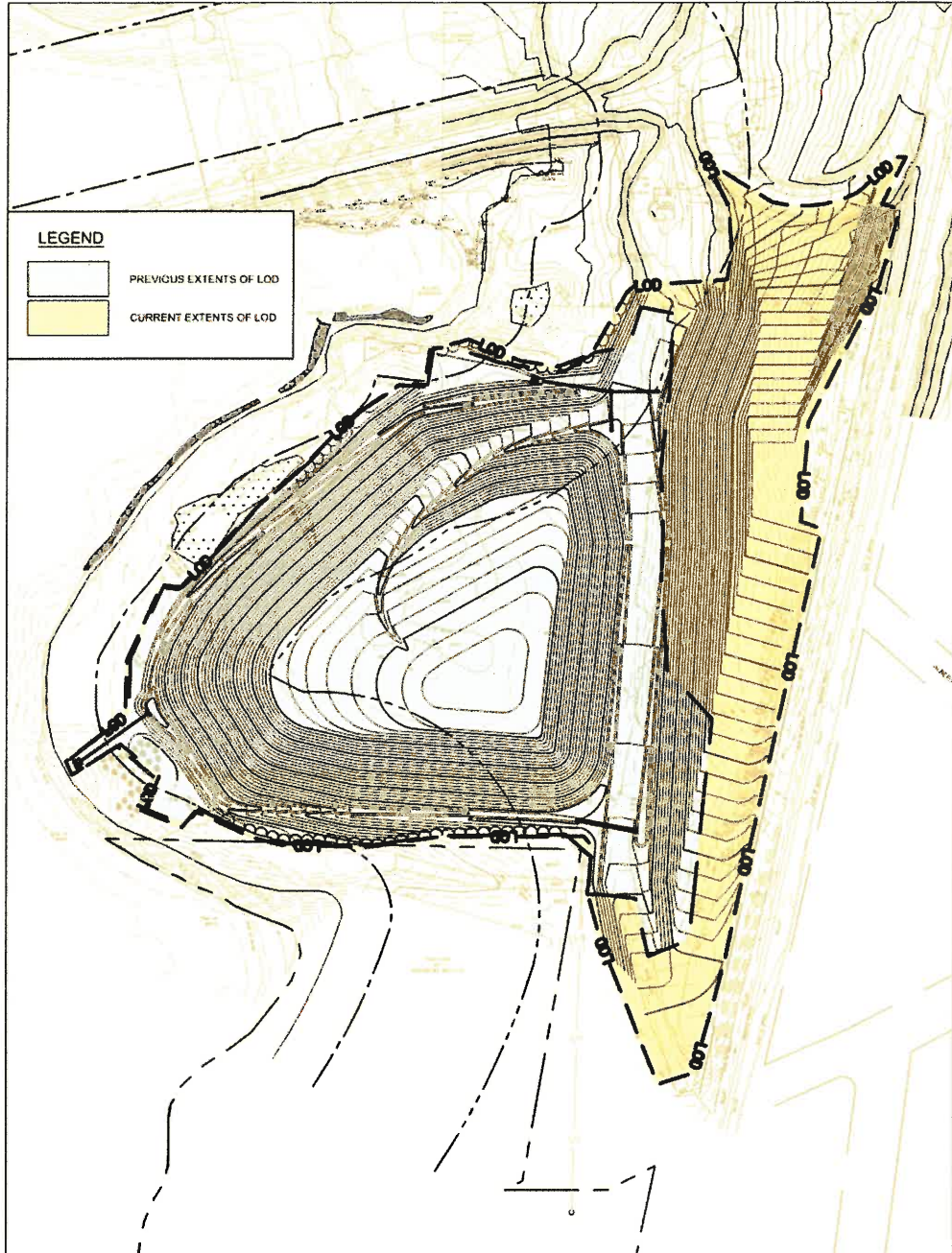
8 BLACKSTONE VALLEY PLACE
 LINCOLN, RI 02865
 (401) 334-4100

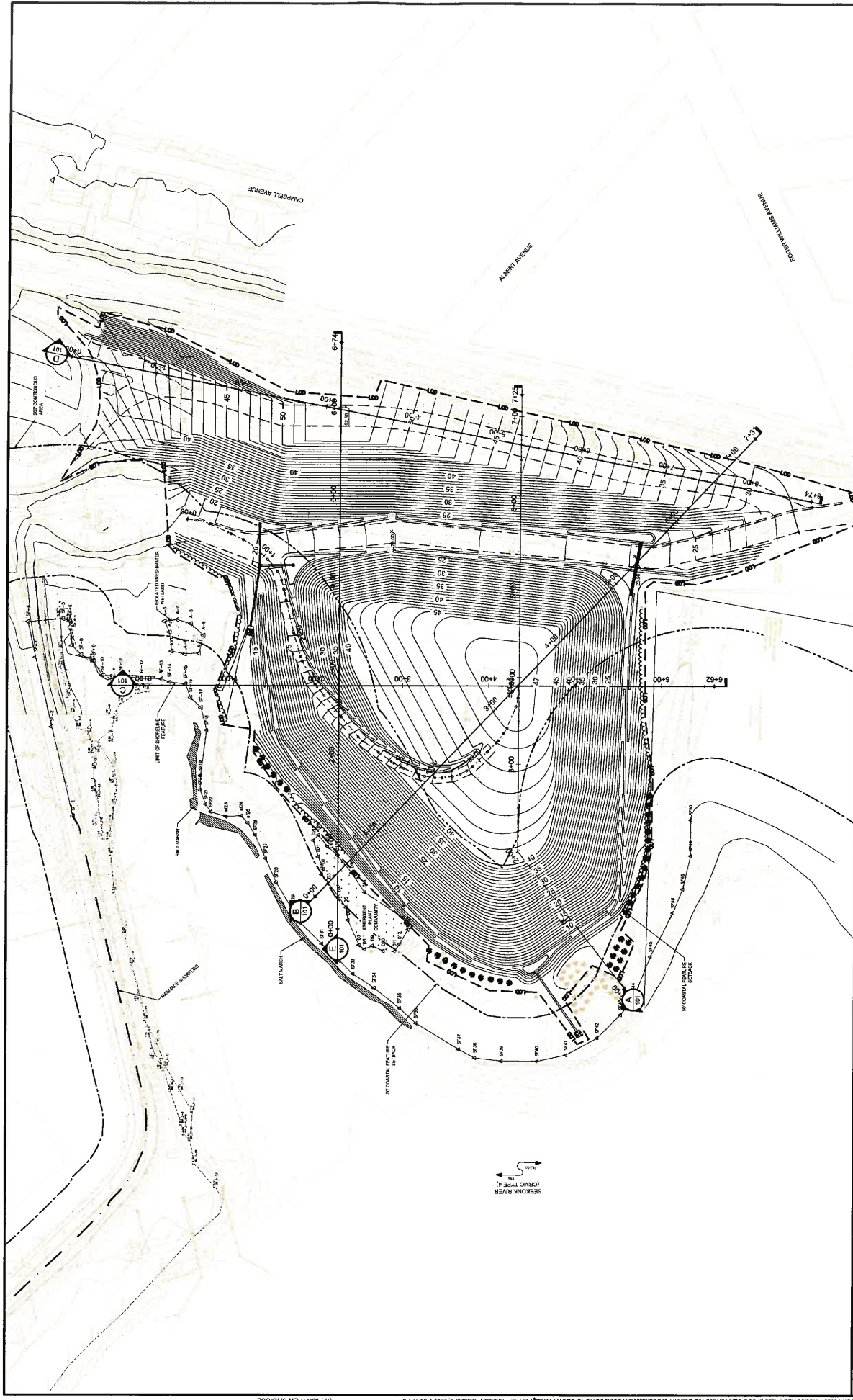
10 LINCOLN ROAD, SUITE 210
 FOXBORO, MA 02035
 (508) 543-1755

FIGURE 1
BUCKLIN POINT LANDFILL
EAST PROVIDENCE, RI



Figure 1 – Current and Proposed Project Limits





REV	DATE	BY	DESCRIPTION

SCALE	1"=60'
WARNINGS	0 X IF THIS DRAWING IS NOT MEASURED, NOT TO SCALE
DESIGNED: CLM/SJW	
DRAWN: BBL	
CHECKED: BB	

PERMIT SUBMISSION - OCTOBER, 2022
NOT FOR CONSTRUCTION
 This drawing is for informational purposes only. It is not to be used for construction. As an interim document, it may contain errors and omissions. It is not to be used for construction without the express written consent of the engineer.

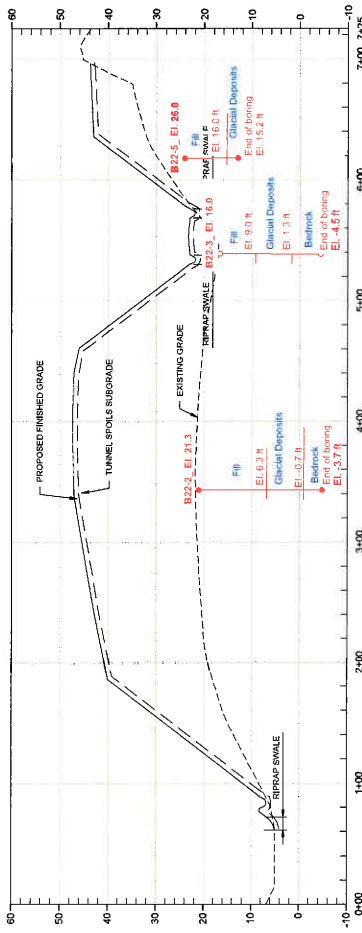




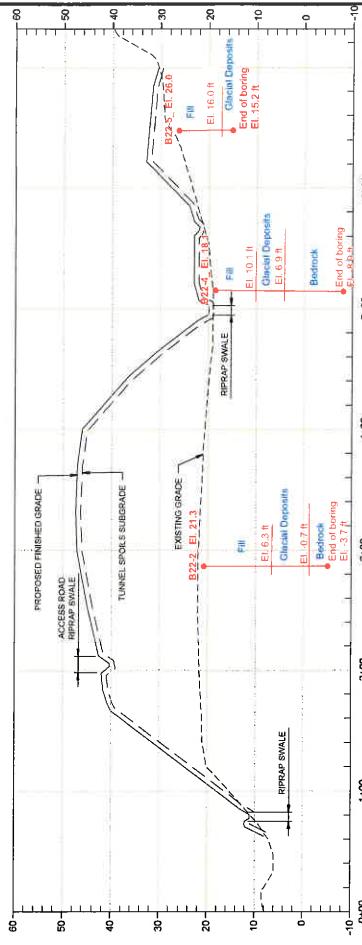
MUNICIPAL ENGINEERING COMMISSION
 PHASE III COMBINED SEWER OVERFLOW PROGRAM
 PLYMOUTH SOUTH LANDFILL CROSS SECTION KEY PLAN

NSC CONTRACT NO. 200416
 CIVIL

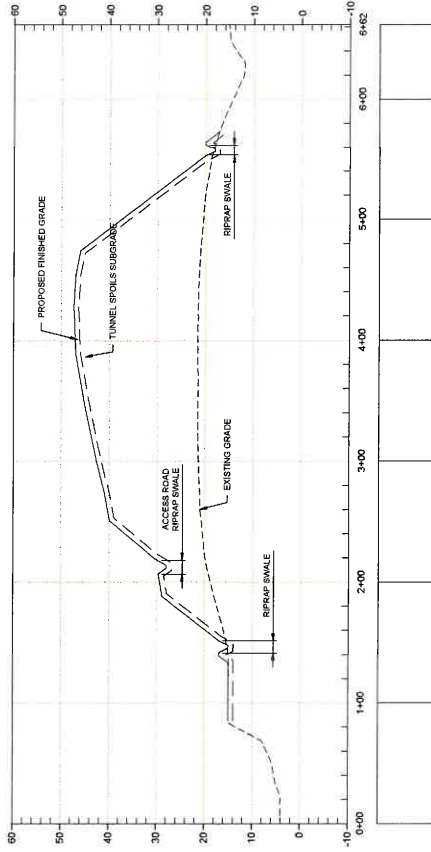
SHEET
C-31
 19833022



SECTION A



SECTION B



SECTION C



REV	DATE	BY	DESCRIPTION

SCALE: 1"=50'

0 WARNINGS
1 NOTES
1 REVISIONS
NOT REVISIONS
IF THEN DRAWINGS IS
NOT TO SCALE

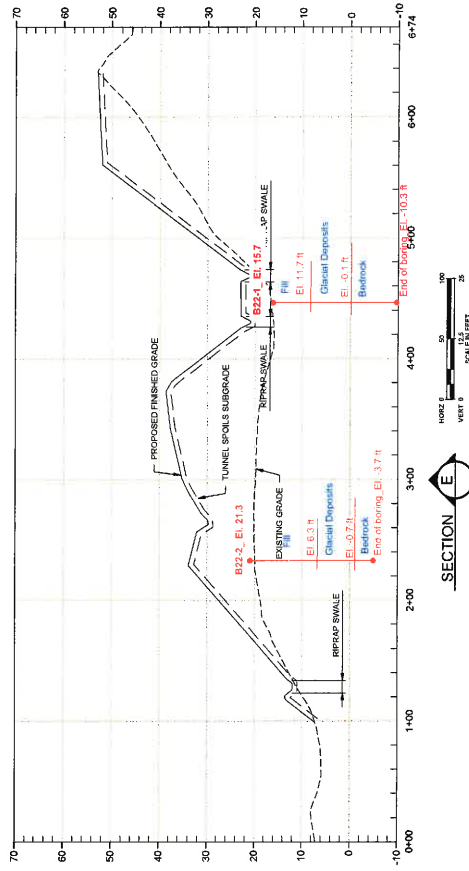
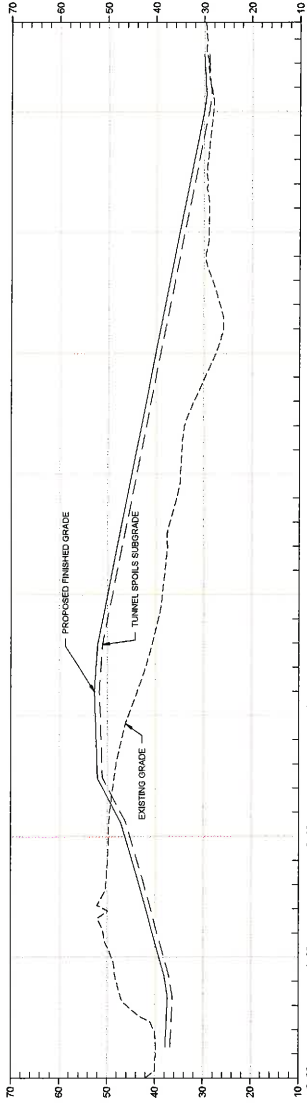
DESIGNED: CLAWSON
DRAWN: REBAL
CHECKED: BB

PERMIT SUBMISSION - OCTOBER 2022
NOT FOR CONSTRUCTION
This document is an interim document and not suitable for construction. It is subject to change without notice and is not to be used to construct the works within contents of the proposal.



MARRAGANETT BAY COMMISSION
PHASE III OVERFLOW PROGRAM

NBC CONTRACT NO. 2016/C
CIVIL
PHASE III COMBINED BEVER OVERFLOW PROGRAM
PARTWORKS AND FUNCTIONALITY RECALIBRE - SUBMIT POINT
SOUTH LANDFILL CROSS SECTIONS No. 1



REV	DATE	BY	DESCRIPTION

SCALE	1"=50'
0 HAWKING	X
1 NOT MEASURED	
2 NOT MEASURED	
3 NOT MEASURED	
4 NOT MEASURED	
5 NOT MEASURED	
6 NOT MEASURED	
7 NOT MEASURED	
8 NOT MEASURED	
9 NOT MEASURED	
10 NOT MEASURED	
11 NOT MEASURED	
12 NOT MEASURED	
13 NOT MEASURED	
14 NOT MEASURED	
15 NOT MEASURED	
16 NOT MEASURED	
17 NOT MEASURED	
18 NOT MEASURED	
19 NOT MEASURED	
20 NOT MEASURED	
21 NOT MEASURED	
22 NOT MEASURED	
23 NOT MEASURED	
24 NOT MEASURED	
25 NOT MEASURED	
26 NOT MEASURED	
27 NOT MEASURED	
28 NOT MEASURED	
29 NOT MEASURED	
30 NOT MEASURED	
31 NOT MEASURED	
32 NOT MEASURED	
33 NOT MEASURED	
34 NOT MEASURED	
35 NOT MEASURED	
36 NOT MEASURED	
37 NOT MEASURED	
38 NOT MEASURED	
39 NOT MEASURED	
40 NOT MEASURED	
41 NOT MEASURED	
42 NOT MEASURED	
43 NOT MEASURED	
44 NOT MEASURED	
45 NOT MEASURED	
46 NOT MEASURED	
47 NOT MEASURED	
48 NOT MEASURED	
49 NOT MEASURED	
50 NOT MEASURED	
51 NOT MEASURED	
52 NOT MEASURED	
53 NOT MEASURED	
54 NOT MEASURED	
55 NOT MEASURED	
56 NOT MEASURED	
57 NOT MEASURED	
58 NOT MEASURED	
59 NOT MEASURED	
60 NOT MEASURED	
61 NOT MEASURED	
62 NOT MEASURED	
63 NOT MEASURED	
64 NOT MEASURED	
65 NOT MEASURED	
66 NOT MEASURED	
67 NOT MEASURED	
68 NOT MEASURED	
69 NOT MEASURED	
70 NOT MEASURED	
71 NOT MEASURED	
72 NOT MEASURED	
73 NOT MEASURED	
74 NOT MEASURED	
75 NOT MEASURED	
76 NOT MEASURED	
77 NOT MEASURED	
78 NOT MEASURED	
79 NOT MEASURED	
80 NOT MEASURED	
81 NOT MEASURED	
82 NOT MEASURED	
83 NOT MEASURED	
84 NOT MEASURED	
85 NOT MEASURED	
86 NOT MEASURED	
87 NOT MEASURED	
88 NOT MEASURED	
89 NOT MEASURED	
90 NOT MEASURED	
91 NOT MEASURED	
92 NOT MEASURED	
93 NOT MEASURED	
94 NOT MEASURED	
95 NOT MEASURED	
96 NOT MEASURED	
97 NOT MEASURED	
98 NOT MEASURED	
99 NOT MEASURED	
100 NOT MEASURED	

DESIGNED: JAS/BJW	PERMIT SUBMISSION - OCTOBER 2022
DRAWN: JAS/BJW	NOT FOR CONSTRUCTION
CHECKED: JB	This drawing is for informational purposes only and is not to be used for construction. As an interim document, it may contain data that is preliminary, incomplete or in error and it is not to be relied upon for the purpose of construction.

MARKUS ANGELO CIVIL COMMISSION	MARKUS ANGELO CIVIL COMMISSION
PHASE III OVERFLOW PROGRAM	PHASE III OVERFLOW PROGRAM
PANTUCKET TUNNEL CONSTRUCTION MATERIALS DELIVERY SCHEDULE IN POINT	PANTUCKET TUNNEL CONSTRUCTION MATERIALS DELIVERY SCHEDULE IN POINT
SOUTH LANDFILL CROSS SECTIONS No. 2	SOUTH LANDFILL CROSS SECTIONS No. 2

NEC CONTRACT NO. 2016C	CIVIL
PHASE III OVERFLOW PROGRAM	MARKUS ANGELO CIVIL COMMISSION
PANTUCKET TUNNEL CONSTRUCTION MATERIALS DELIVERY SCHEDULE IN POINT	PHASE III OVERFLOW PROGRAM
SOUTH LANDFILL CROSS SECTIONS No. 2	PANTUCKET TUNNEL CONSTRUCTION MATERIALS DELIVERY SCHEDULE IN POINT

Stantec
PAVE