



State of Rhode Island
Coastal Resources Management Council
Oliver H. Stedman Government Center
4808 Tower Hill Road, Suite 3
Wakefield, RI 02879-1900

(401) 783-3370
Fax (401) 783-2069

PUBLIC NOTICE

File Number: MODIFICATION #2: 2022-03-032 Date: August 3, 2023

This office has under consideration the application of:

Narragansett Bay Commission
Attn: Richard Bernier
One Service Road
Providence, RI 02905

for a State of Rhode Island Assent **Modification #2** CRMC Assent 2022-03-032: Revisions are proposed to the plan for the North Landfill site to allow additional tunnel construction materials to be used in on-site filling activities. This will allow us to maximize the use of NBC-owned property to reduce the amount of material that otherwise requires offsite disposal. The previously approved plan proposed filling and grading approximately 95,000 cubic yards of tunnel construction material at the North Landfill. The revised plan, and the subject of this Request for Assent Modification, proposes an additional 70,000 cubic yards of material, or approximately 165,000 cubic yards of tunnel construction material in total at the North Landfill site. The previous approved final grade was approximately at elevation 63 feet MSL (NGVD 1929). The proposed final grade will be 72.5 feet MSL (NGVD 1929). No revisions are proposed from the approved plans for the South Landfill.

Also note: Order of Approval No. 1268, issued by RIDEM on December 4, 1995 approving the closure of the Bucklin Point North Landfill (also known as the BVDC Sludge Landfill), has previously been modified to allow for the reuse of excavated material generated during construction of the Pawtucket Tunnel as fill material at the landfill site. NBC has requested approval to reuse additional excavated material as fill at the landfill. Upon issuance of an Assent, RIDEM will approve this request as it has determined that the material excavated during construction of the Pawtucket Tunnel is suitable for the proposed activity.

Project Location:	102 Campbell Avenue
City/Town:	East Providence
Plat/Lot:	302 / 1
Waterway:	Seekonk River

Plans of the proposed work can be requested at Cstaff1@crmc.ri.gov.

In accordance with the Administrative Procedures Act (Chapter 42-35 of the Rhode Island General Laws) you may request a hearing on this matter.

You are advised that if you have good reason to enter protests against the proposed work it is your privilege to do so. It is expected that objectors will review the application and plans thoroughly, visit site of proposed work if necessary, to familiarize themselves with the conditions and cite what law or laws, if any, would in their opinion be violated by the work proposed.

August 3, 2023

Page Two

If you desire to protest, you must attend the scheduled hearing and give sworn testimony. A notice of the time and place of such hearing will be furnished you as soon as possible after receipt of your request for hearing. If you desire to request a hearing, to receive consideration, it should be in writing (**with your correct mailing address, e-mail address and valid contact number**) and be received at this office on or before **September 2, 2023**.

Please email your comments/hearing requests to: cstaff1@crmc.ri.gov; or mail via USPS to: Coastal Resources Management Council; O. S. Government Center, 4808 Tower Hill Road, Rm 116; Wakefield, RI 02879.

/lat



LOCUS MAP
SCALE: N.T.S.

INDEX OF DRAWINGS

SHEET No.	SHEET	SHEET TITLE
1	C-1	DRAWING INDEX & LEGEND
2	C-2	NOTES
3 - 5	C-3 - C-5	NORTH LANDFILL EXISTING CONDITIONS
6 - 10	C-6 - C-10	NORTH LANDFILL PHASING & EROSION CONTROL PLANS
11	C-11	NORTH LANDFILL PROPOSED CONDITIONS KEY PLAN
12 , 13	C-12 , C-13	NORTH LANDFILL GRADING PLANS
14 , 15	C-14 , C-15	NORTH LANDFILL FINAL SITE PLANS
16 , 17	C-16 , C-17	NORTH LANDFILL PERIMETER ACCESS ROAD PLAN AND PROFILES
18 , 19	C-18 , C-19	NORTH LANDFILL ACCESS ROAD PLAN AND PROFILES
20	C-20	NORTH LANDFILL SECONDARY ACCESS ROAD PLAN AND PROFILE
21 - 23	C-21 - C-23	NORTH LANDFILL CROSS SECTIONS
24	C-24	SOUTH LANDFILL EXISTING CONDITIONS
25	C-25	SOUTH LANDFILL EROSION CONTROL PLAN
26	C-26	SOUTH LANDFILL FINAL SITE PLAN
27	C-27	SOUTH LANDFILL PLAN AND PROFILE
28	C-28	SOUTH LANDFILL CROSS SECTIONS
29 - 32	C-29 - C-32	DETAILS

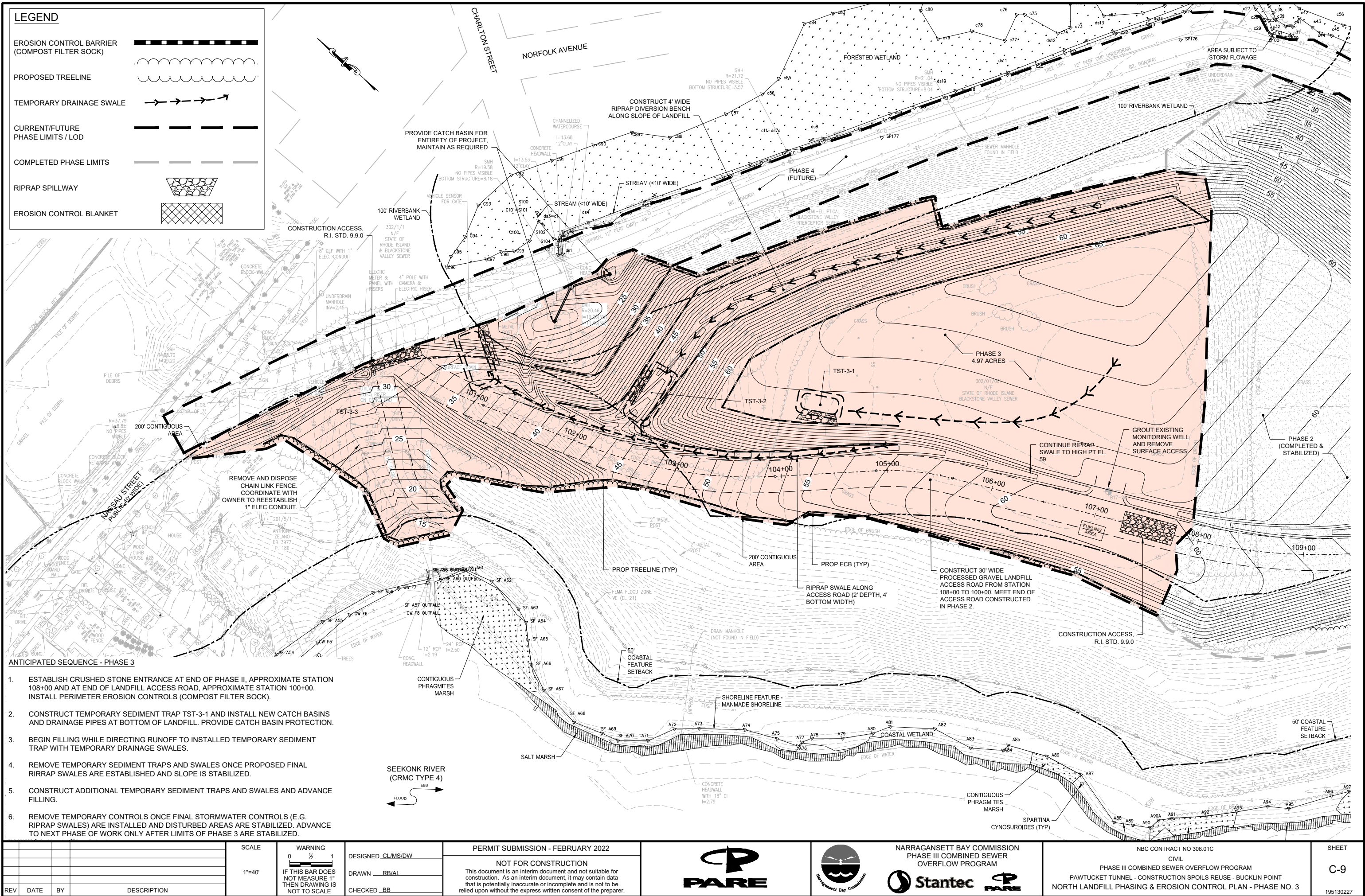
EXISTING	LEGEND	PROPOSED
	PROPERTY LINE	
	SETBACKS	
	EASEMENT LINE	
	CONTOUR	
	SPOT ELEVATION	
	DRAINAGE LINE	
	WATER LINE	
	FIRE WATER LINE	
	SANITARY SEWER LINE	
	GAS LINE	
	UNDERGROUND ELECTRIC	
	TELEPHONE LINE	
	OVERHEAD ELECTRIC LINE	
	LIMIT OF DISTURBANCE	
	LIMIT OF CONTRACT	
	CATCH BASIN	
	HYDRANT	
	DRAINAGE MANHOLE	
	SEWER MANHOLE	
	UTILITY POLE	
	WATER VALVE	
	GAS GATE	
	TREE LINE	
	WOOD RAIL FENCE	
	CHAIN LINK FENCE	
	INTEGRATED NETTING & CHAIN LINK FENCE	
	GUARDRAIL	
	CURBING	
	EDGE OF PAVEMENT	
	SAWCUT LINE	
	SIGN	
	COMPOST FILTER SOCK	
	NO. OF PARKING SPACES	
	WETLAND EDGE	
	50' PERIMETER WETLAND	
	200' RIVERBANK	
	FEMA FLOOD PLAIN	
	TEST PIT	
	BORING	
	RIPRAP	
	BEGINNING/END OF DIRECTIONAL WORK	
	BITUMINOUS PAVEMENT	

ABD = ABANDONED
BC = BOTTOM OF CURB
BIT. = BITUMINOUS
BM = BENCHMARK
BW = GRADE AT BOTTOM OF WALL
CB = 4' DIA. CATCH BASIN UNLESS OTHERWISE NOTED
CC = VERTICAL CONCRETE CURB
CFS = COMPOST FILTER SOCK
CI = CAST IRON
CL = CLASS
CLDI = CEMENT-LINED DUCTILE IRON
CO = CLEANOUT
CONC. = CONCRETE
DEMO = DEMOLITION
DIA = DIAMETER
DMH = DRAIN MANHOLE
ELEV.EL = ELEVATION
EOP = EDGE OF PAVEMENT
EXIST. = EXISTING
FT = FOOT
GRAN. = GRANITE
GTD = GRADE TO DRAIN
HDPE = HIGH DENSITY POLYETHYLENE PIPE
INV. = INVERT
LOC = LIMIT OF CONTRACT
LOD = LIMIT OF DISTURBANCE
LP = LOW POINT
MAX. = MAXIMUM
MIN. = MINIMUM
PE = POLYETHYLENE
PERF. = PERFORATED
PVC = POLYVINYL CHLORIDE
RCP = REINFORCED CONCRETE PIPE
R.I. STD. = RHODE ISLAND STANDARD
RAD = REMOVE AND DISPOSE
R-X = RADIUS
SMH = SEWER MANHOLE
TC = TOP OF CURB
TEMP = TEMPORARY
TP = TEST PIT
TW = TOP OF WALL
(TYP.) = TYPICAL
UP = UTILITY POLE
VGC = VERTICAL GRANITE CURB

RECEIVED
3/4/2022
MANAGEMENT CONCEPTS

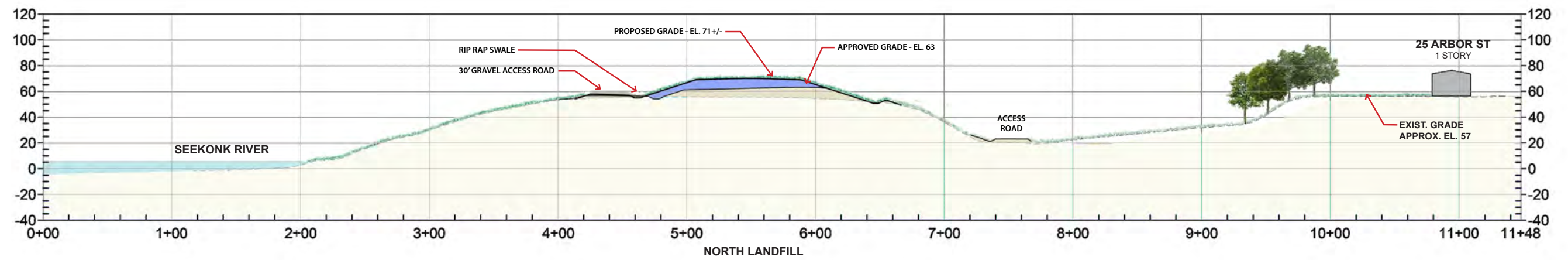
BRANDON M. BLANCHARD
No. 8965
3.4.22
REGISTERED
PROFESSIONAL ENGINEER
(CIVIL)

DWG FILE: Z:\JOBS\14 Jobs\14106.03 NBC Phase III CSO CER-RTTask 19E-Bucklin Point Landfills\DWG\PHASE 3.dwg PLOT DATE: Friday, February 11, 2022 2:08:03 PM BY: APRIL LAGACE





North Landfill Site Aerial Plan
Scale: 1"=40'-0"
Aerial Imagery Source: Nearmap



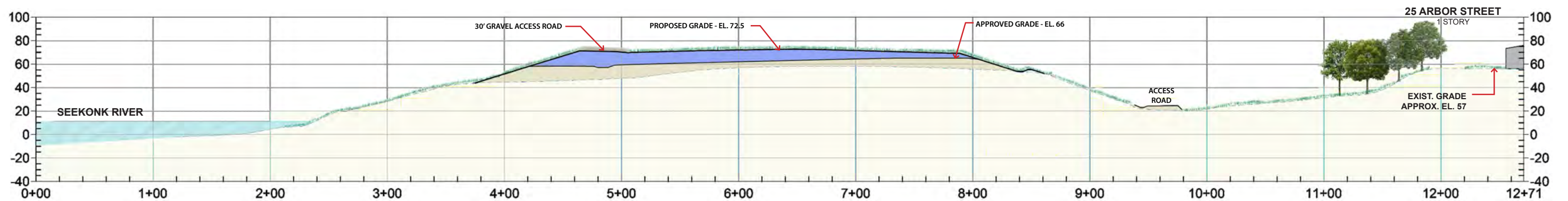
NOTE: MAXIMUM HEIGHT



25 Arbor Street



North Landfill Site Aerial Plan
Scale: 1"=40'-0"
Aerial Imagery Source: Nearmap





North Landfill Site Aerial Plan
Scale: 1"=40'-0"
Aerial Imagery Source: Nearmap

