



State of Rhode Island  
**Coastal Resources Management Council**  
Oliver H. Stedman Government Center  
4808 Tower Hill Road, Suite 116  
Wakefield, RI 02879-1900

Phone (401) 783-3370  
Fax (401) 783-3767

### **PUBLIC NOTICE**

File Number: 2023-02-090 Date: November 13, 2024

This office has under consideration the application of:

**SouthCoast Wind Energy LLC**  
**3 Center Plaza**  
**Boston, MA 02108**

for a State of Rhode Island Assent and Freshwater Wetlands Permit Application to construct and maintain: Two new 20.4-mile submarine high-voltage direct current (HVDC) power cable bundles and associated communications cables co-located within a single corridor within state waters through the Sakonnet River to the southern onshore cable crossing locations at the Town of Portsmouth and re-entering Mount Hope Bay from the north and crossing into Massachusetts state waters to Brayton Point in Somerset, Massachusetts. The State Assent application also includes: preparation of two landfall work areas for horizontal directional drilling (HDD) pit construction; installation of transition joint bays; installation and operation of an approximately 2-mile long underground onshore transmission cable; and associated underground interconnection circuits. These project components are part of the overall 1,287-megawatt (MW) SouthCoast Wind 1 Project.

Project Location:	RI State Waters and Portsmouth, RI; Plat 8, Lots 25-50; Plat 13, Lots 25-1; Plat 19, Lots 19-89; Plat 25, Lots: 13-6
City/Town:	Portsmouth, RI
Waterway:	Sakonnet River and Mount Hope Bay

Plans for the proposed work can be requested at [cstaff1@crmc.ri.gov](mailto:cstaff1@crmc.ri.gov). The application for an Assent and the Freshwater Wetlands Permit Application can be viewed here: <http://www.crmc.ri.gov/windenergy/southcoast.html>

Two submarine high-voltage HVDC cable bundles (320 kilovolt per cable) are proposed for the SouthCoast Wind 1 Project. Each cable will measure approximately 20.4 miles in length including 5.3 miles in Rhode Island Sound, 11 miles in the Sakonnet River, and 4 miles in the Rhode Island state waters portion of Mount Hope Bay. Each cable bundle is comprised of two single-core armored submarine cables and one fiberoptic cable. Each power cable will be 6.9

inches in diameter and each cable bundle will be 13.8 inches in diameter. The cable corridor is proposed to be within state waters designated as CRMC Type 4 (Rhode Island Sound and Mount Hope Bay), Type 2 (Sakonnet River), and Type 6 (small portion of Mount Hope Bay) waters (Figure 1). SouthCoast Wind Energy LLC proposes a target burial range of 3.2 to 13.1 feet below seabed level and a target burial depth of approximately 6 feet. The cable bundles may be buried using a jetting sled/plow, jetting ROV, pre-cut plow, mechanical plowing, mechanical cutting ROV system, and/or vertical injector, and/or combination thereof. An estimated 136.6 acres of seabed are anticipated to be temporarily disturbed. SouthCoast Wind Energy LLC estimates approximately 15% of the export cable corridor will require secondary cable protection. Secondary cable protection is expected to be required primarily at the identified cable/pipeline crossing locations in the Sakonnet River and where hard bottom conditions exist in Rhode Island sound. Cable protection will be in the form of rock bags, concrete mattresses, and/or rock berms.

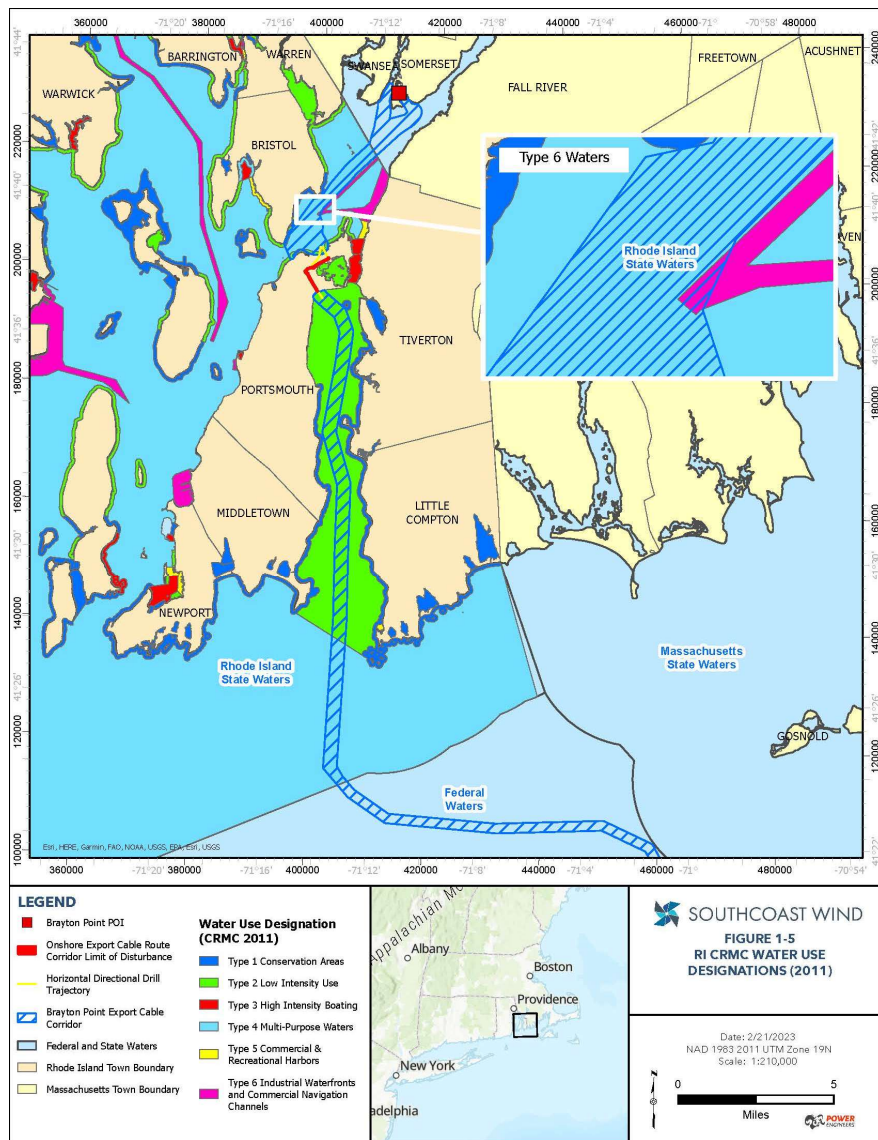


Figure 1: RI CRMC Water Type Use Classifications

In addition to a CRMC Category B Assent and Freshwater Wetlands Permit, SouthCoast Wind Energy LLC is required to obtain additional permits from the Rhode Island Department of Environmental Management (RIDEM) including a Water Quality Certification, Dredge Permit, and a Construction General Permit. RIDEM issued a Water Quality Certification for the Project on March 14, 2024. RIDEM issued a Dredge Permit for the Project on March 14, 2024. A R.I. Pollution Discharge Elimination System (RIPDES) General Permit for Stormwater Discharge Associated with Construction Activity (Construction General Permit) will be required to authorize discharges pursuant to R.I. Gen. Laws § 46-12 as amended and regulations for the RIPDES Program (250-RICR-150-10-1).

The export cables will make landfall on Aquidneck Island in Portsmouth, Rhode Island. One landfall location will occupy the corner of Boyds Land and Park Avenue on the northeast side of Portsmouth. A second landfall construction area will be on the northwest (Mount Hope Bay) side of Portsmouth and will be either within the Montuap Country Club parking lot or within land owned by Roger Williams University on the northern side of Anthony Road. SouthCoast Wind Energy LLC will install four conduits (eight in total) via HDD at the end of each of the intermediate onshore crossings of Portsmouth. Construction operations at each onshore landfall area will require approximately 0.6 to 1.0 acre.

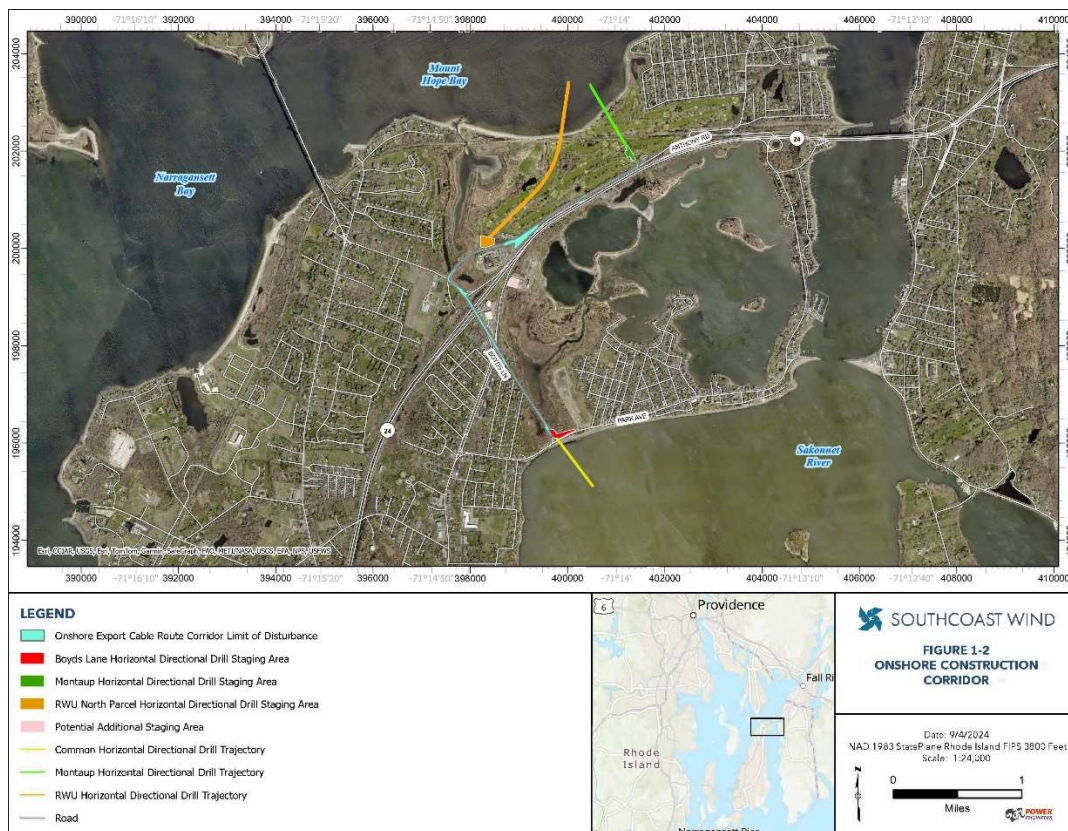


Figure 2: Proposed onshore export cable landing areas and construction corridor

Offshore HDD pits will require sediment excavation and dredging at each of the eight offshore HDD pits. Approximately 1,867 cubic yards of material will be excavated/dredged at each site (approx. 14,932 cubic yards total). Sediments will be side-cast immediately adjacent to the offshore pits to allow for readily available backfilling. The HDD pits are anticipated to be approximately 0.3 – 0.6 miles in length with a cable burial depth of approximately 40 ft below seabed and each BDD bore will be separated by approximately 10 ft to 33 ft.

In accordance with the Administrative Procedures Act (Chapter 42-35 of the Rhode Island General laws) you may request a hearing on this matter.

You are advised that if you have good reason to enter protests against the proposed work it is your privilege to do so. It is expected that objectors will review the application and plans thoroughly, visit the site of the proposed work, if necessary, to familiarize themselves with the conditions and cite what law or laws, if any, would in their opinion be violated by the work proposed.

If you desire to protest, you must attend the scheduled hearing and give sworn testimony. A notice of the time and place of such hearing will be furnished to you as soon as possible after receipt of your request for a hearing. If you desire to request a hearing, to receive consideration, it should be in writing (**with your correct mailing address, e-mail address and valid contact number**) and be received at this office on or before:

**December 28, 2024**

Please email your comments/hearing requests to: [cstaff1@crmc.ri.gov](mailto:cstaff1@crmc.ri.gov); or mail via USPS to: Coastal Resources Management Council; O. S. Government Center, 4808 Tower Hill Road, Rm 116; Wakefield, RI, 02879.

/lat