



State of Rhode Island  
**Coastal Resources Management Council**  
Oliver H. Stedman Government Center  
4808 Tower Hill Road, Suite 3  
Wakefield, RI 02879-1900

(401) 783-3370  
Fax (401) 783-2069

## **PUBLIC NOTICE**

File Number: 2023-06-125 Date: October 2, 2023

This office has under consideration the application of:

**City of East Providence  
145 Taunton Ave  
East Providence, RI 02914**

for a State of Rhode Island Assent to construct and maintain: Repair and add protection to the existing eroded bluff located at 0 Bluff Avenue. Work includes installing geotextile reinforced mechanically stabilized earth slope (MSE) with dimensions of 2:1 (horizontal to vertical). The MSE slope will present as a natural slope (i.e., no manmade structure will be visible) The design allows for implementing native vegetation combined with coir logs, jute mat reinforcement, will satisfy slope stability requirements, will restore the toe of the slope to its approximate historic position, and will provide the desired protection for Booth Avenue and its utilities.

Also interlocking concrete blocks will be installed to provide erosion protection and additional habitat for marine fauna (a constructed marsh with an artificial sill to reduce potential future erosion). Other features include an infiltrating Best Management Practice (BMP) for stormwater management and the installation of a “pocket” park.

A special exception is required for the construction of the shoreline protection along a Type 1 shoreline per RICMRP 1.3.1.G.3(a) (Shoreline Protection, Prohibitions).

Project Location:	Booth Avenue
City/Town:	East Providence
Plat/Lot:	13 / 9
Waterway:	Bullocks Cove

Plans of the proposed work can be requested at [Cstaff1@crmc.ri.gov](mailto:Cstaff1@crmc.ri.gov).

In accordance with the Administrative Procedures Act (Chapter 42-35 of the Rhode Island General Laws) you may request a hearing on this matter.

You are advised that if you have good reason to enter protests against the proposed work it is your privilege to do so. It is expected that objectors will review the application and plans thoroughly, visit site of proposed work if necessary, to familiarize themselves with the conditions and cite what law or laws, if any, would in their opinion be violated by the work proposed.

If you desire to protest, you must attend the scheduled hearing and give sworn testimony. A notice of the time and place of such hearing will be furnished you as soon as possible after receipt of your request for hearing. If you desire to request a hearing, to receive consideration, it should be in writing (**with your correct mailing address, e-mail address and valid contact number**) and be received at this office on or before November 2, 2023.

Please email your comments/hearing requests to: [cstaff1@crmc.ri.gov](mailto:cstaff1@crmc.ri.gov); or mail via USPS to: Coastal Resources Management Council; O. S. Government Center, 4808 Tower Hill Road, Rm 116; Wakefield, RI 02879.

/lat

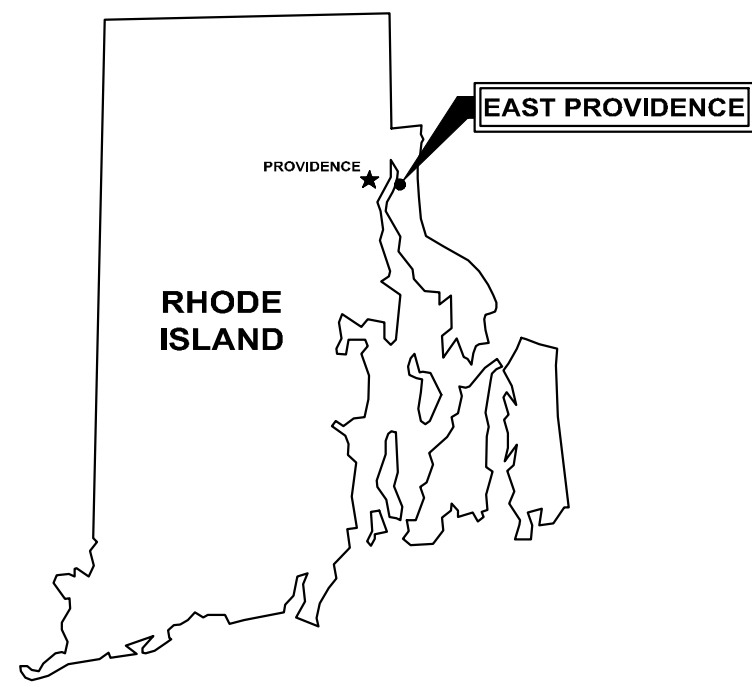
# CITY OF EAST PROVIDENCE, RHODE ISLAND

## CONTRACT DRAWINGS FOR

# BOOTH AVENUE SLOPE STABILIZATION

### JUNE 2023

## RICRMC PERMIT SUBMISSION



#### DRAWING INDEX

<b>GENERAL</b>	
---	COVER SHEET
<b>CIVIL</b>	
C-1	GENERAL NOTES, LEGEND, ABBREVIATIONS
C-2	SITE PLAN AND PROFILE
C-3	SECTIONS I
C-4	SECTIONS II
C-5	DETAILS I
C-6	DETAILS II
C-7	LANDSCAPE PLAN
C-8	EROSION CONTROL NOTES AND DETAILS



**LOCATION PLAN**  
SCALE: NTS

**WRIGHT-PIERCE**   
Engineering a Better Environment



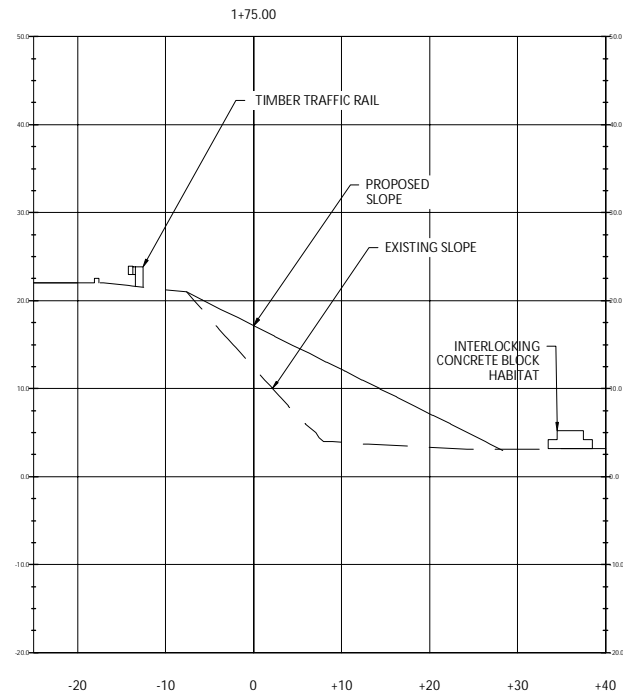
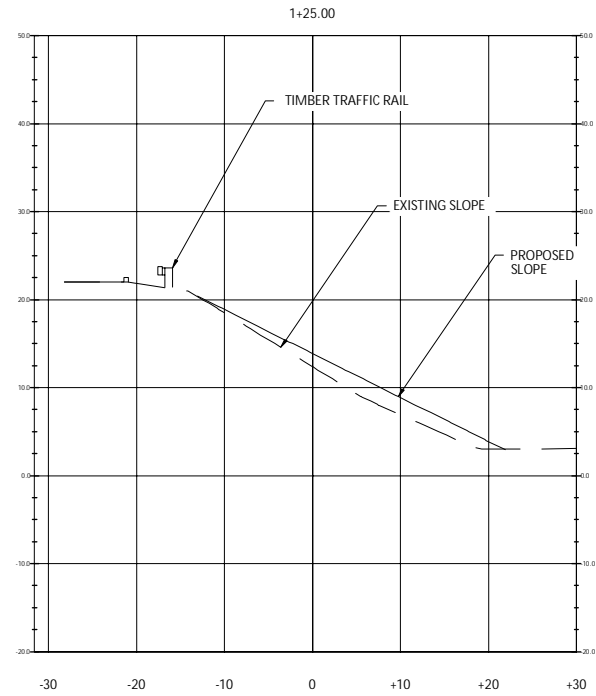
621.8156 | [www.wright-pierce.com](http://www.wright-pierce.com)

FOR REVIEW June 2023  
FOR BIDDING \_\_\_\_\_  
WP PROJECT No. 13981




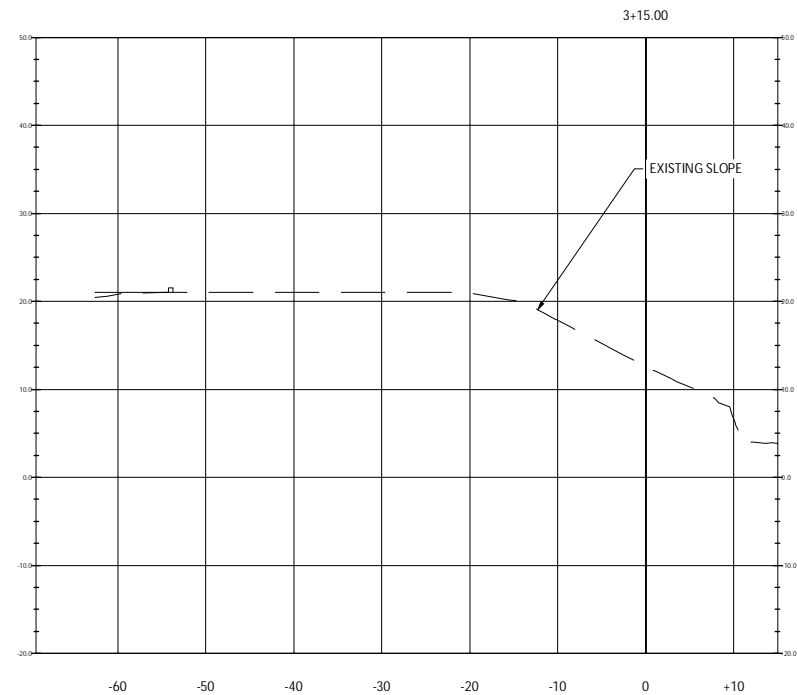
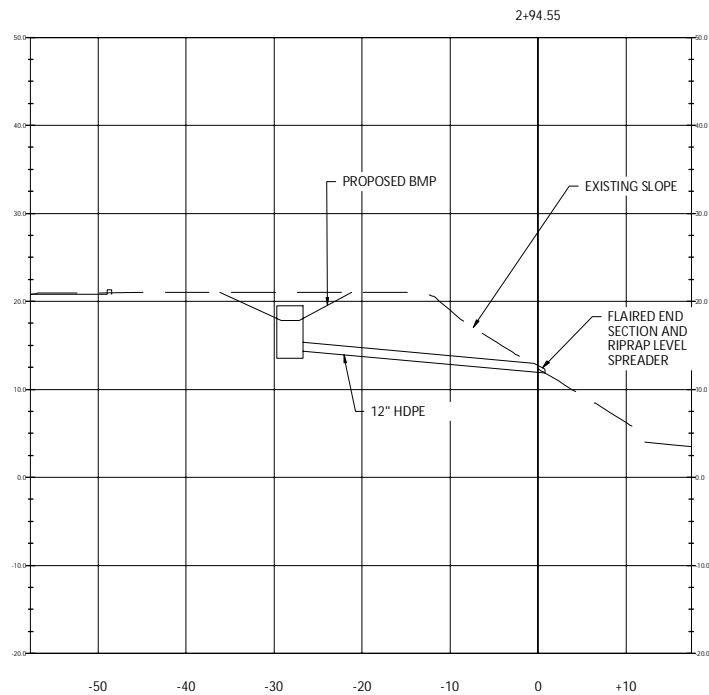
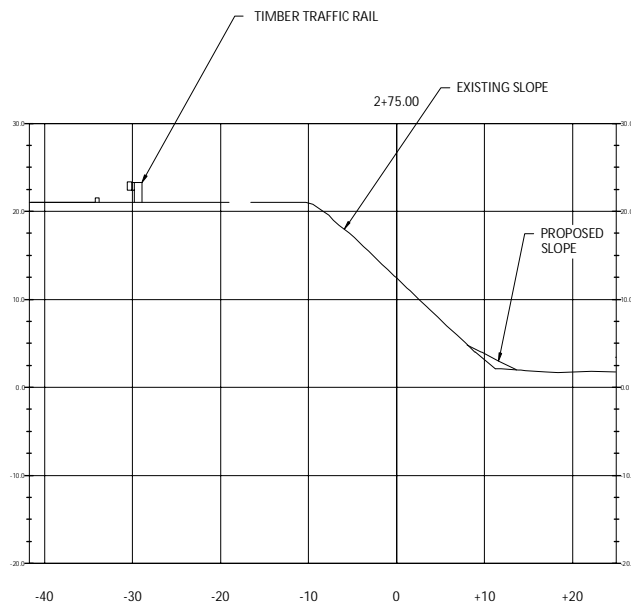
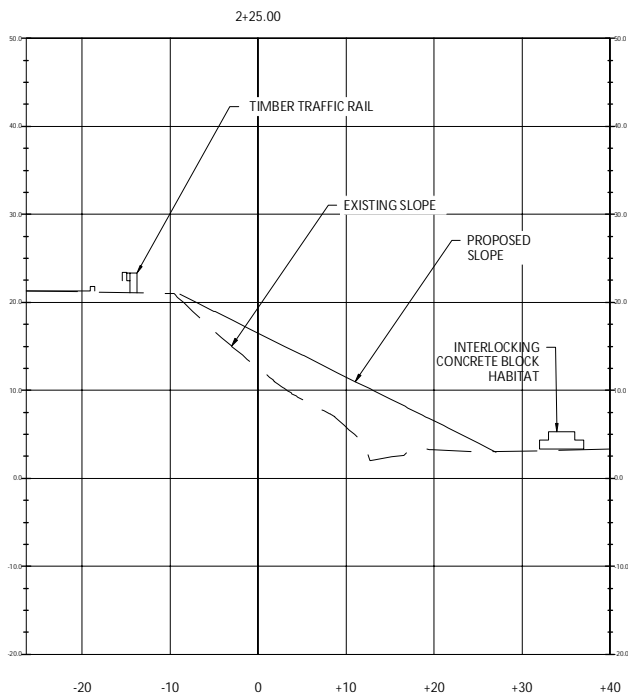





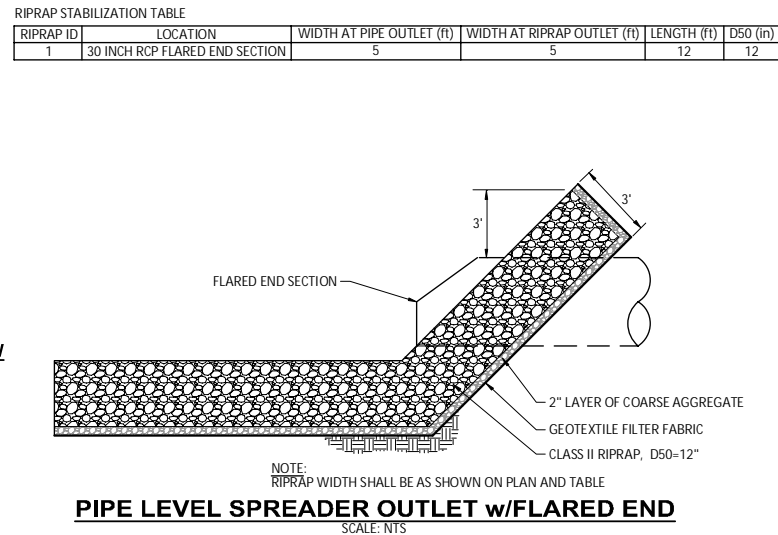
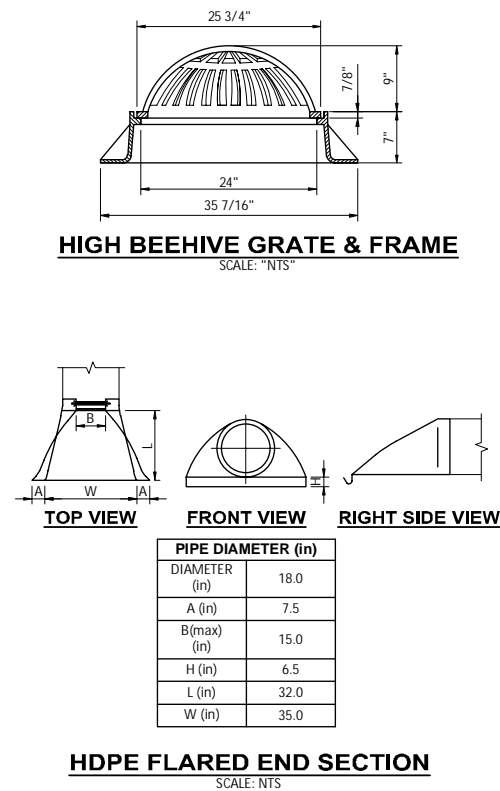
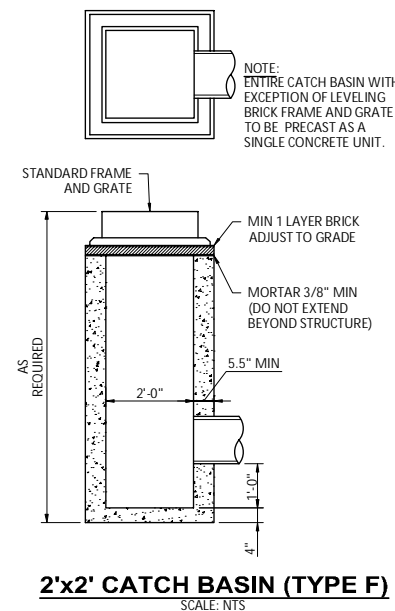
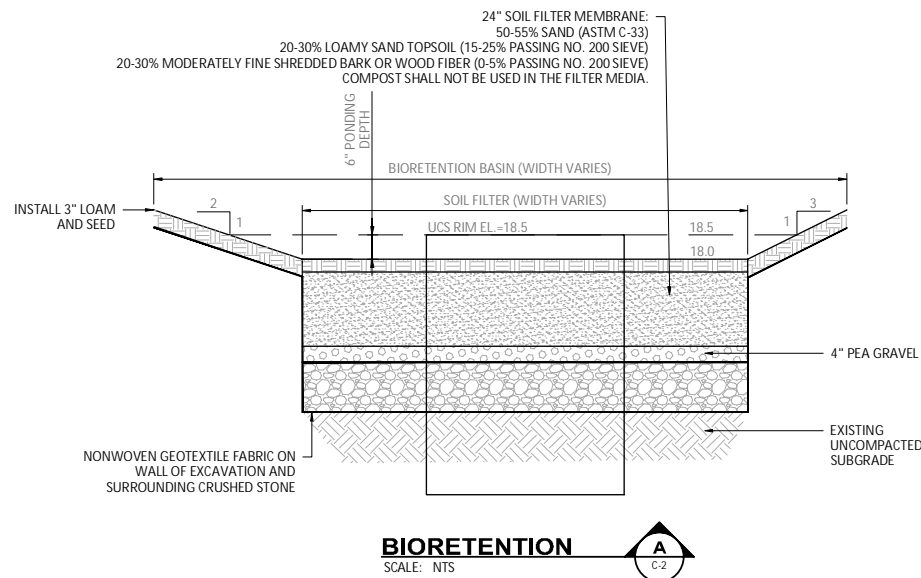


**RECEIVED**  
**6/23/2023**  
**COASTAL RESOURCES**  
**MANAGEMENT COUNCIL**

DRAWING	CITY OF EAST PROVIDENCE, RHODE ISLAND BOOTH AVENUE SLOPE STABILIZATION		 <b>WRIGHT-PIERCE</b> Engineering a Better Environment  <b>888.621.8156   <a href="http://www.wright-pierce.com">www.wright-pierce.com</a></b>	DESIGNED BY: J.MICHAUD CAD: _____ CHECKED BY: _____ DATE: _____ APPROVED BY: _____ DATE: _____ PROJECT NO.: 13981	SUBMISSIONS/REVISIONS	NO	DATE
	SECTIONS 1						
C-3							



DRAWING	CITY OF EAST PROVIDENCE, RHODE ISLAND BOOTH AVENUE SLOPE STABILIZATION		 <b>WRIGHT-PIERCE</b> Engineering a Better Environment 888.621.8156   <a href="http://www.wright-pierce.com">www.wright-pierce.com</a>	<div></div> <div></div> <div></div>	DESIGNED BY: J.MICHAUD CAD COORD: _____ CAD: _____ CHECKED BY: _____ DATE: _____ APPROVED BY: _____ DATE: _____ PROJECT NO.: 13981	NO	SUBMISSIONS/REVISIONS	APP'D	DATE



RIPRAP ID	LOCATION	WIDTH AT PIPE OUTLET (ft)	WIDTH AT RIPRAP OUTLET (ft)	LENGTH (ft)	D50 (in)
1	30 INCH RCP FLARED END SECTION	5	5	12	12

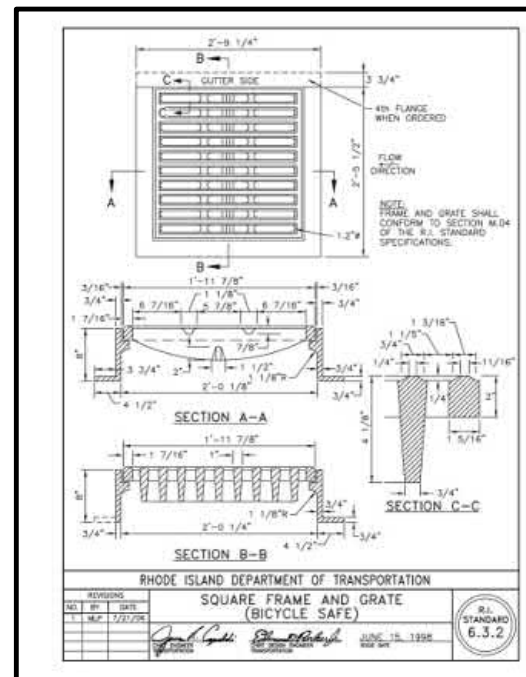
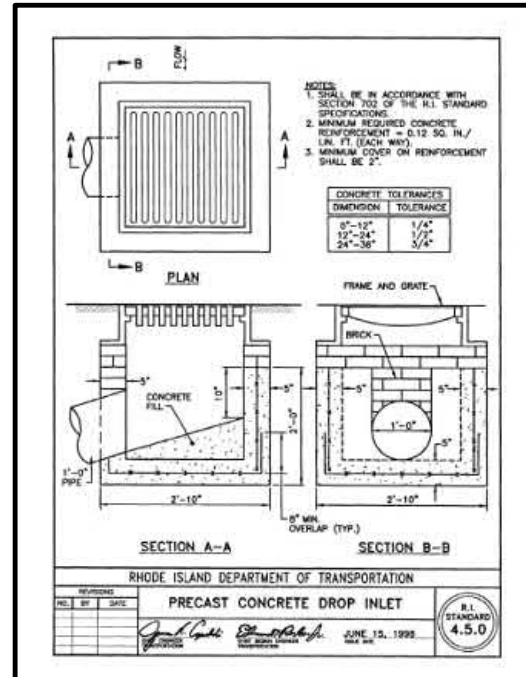
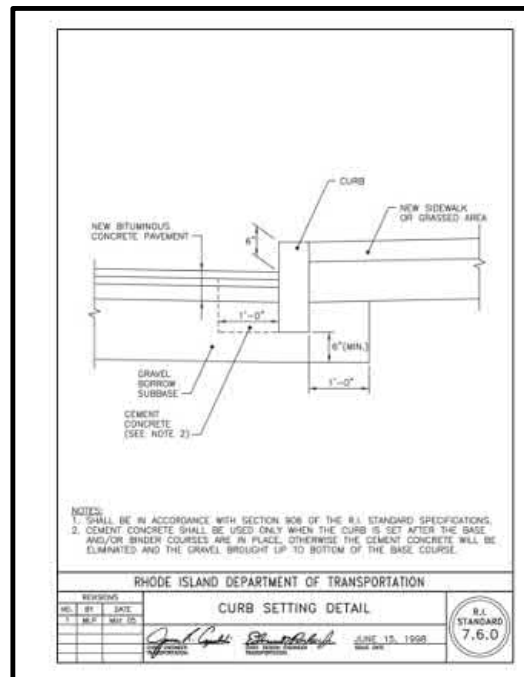
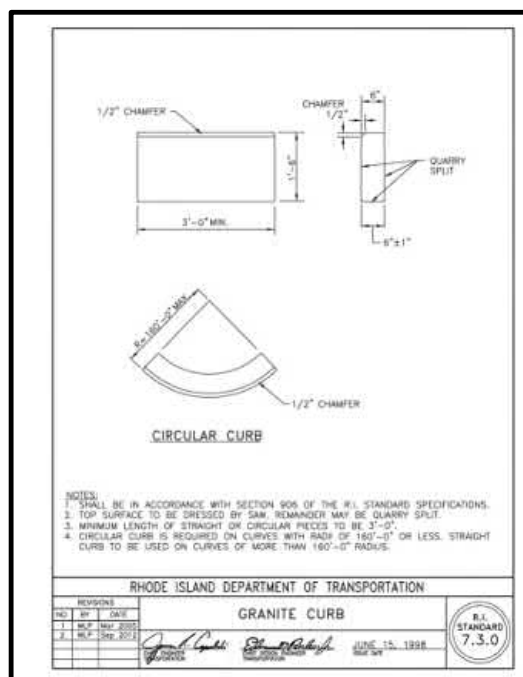
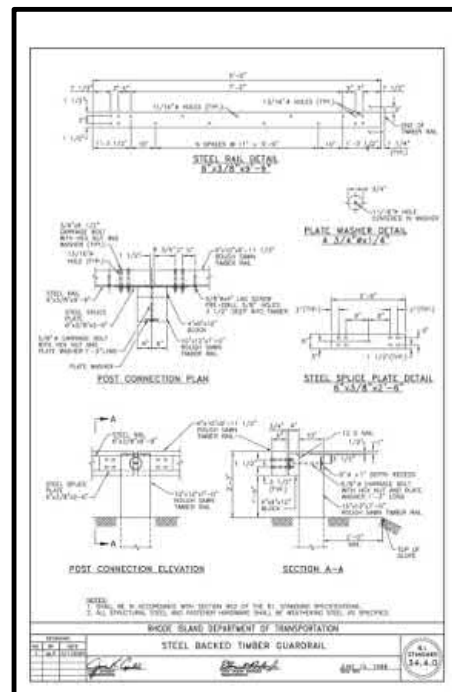
NO	SUBMISSIONS/REVISIONS	APP'D	DATE
	DESIGNED BY: J. SHACTMAN		
	CAD CORP: J. MICHAUD		
△	CAD: J. MICHAUD		
	CHECKED BY:		
	DATE:		
△	APPROVED BY:		
	DATE:		
△	PROJECT NO: 13981		

**RECEIVED**  
**6/23/2023**  
**COASTAL RESOURCES**  
**MANAGEMENT COUNCIL**

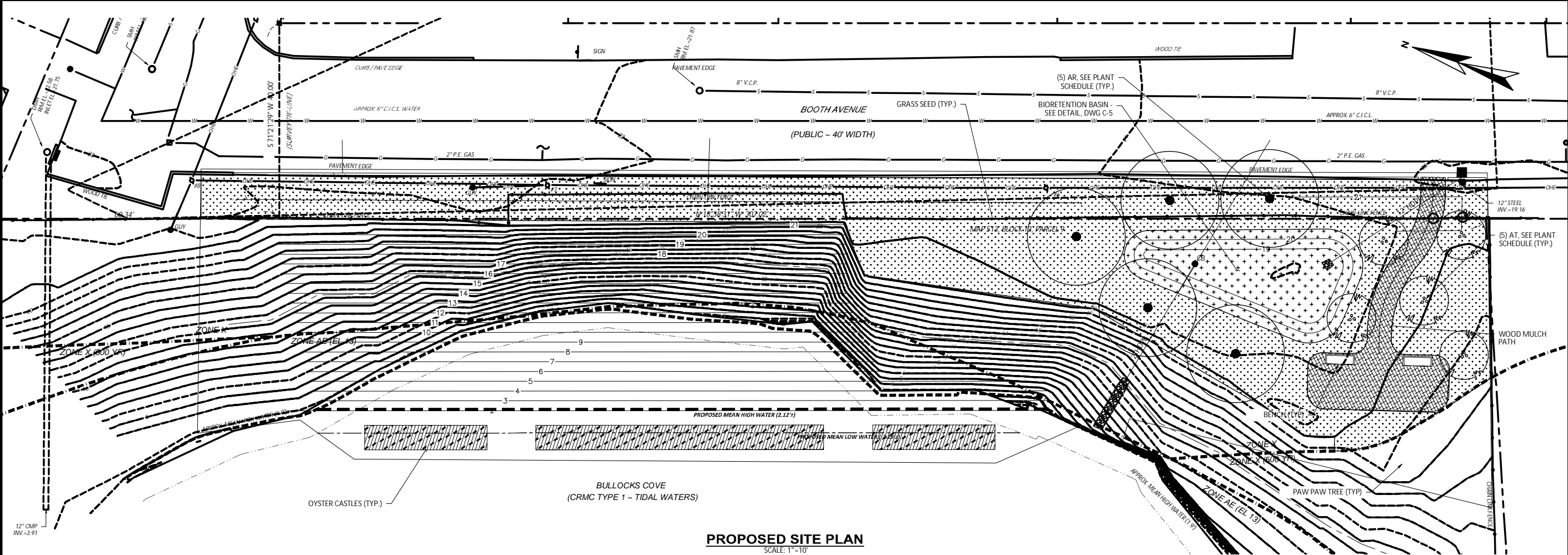
**WRIGHT-PIERCE**   
Engineering a Better Environment  
888.621.8156 | [www.wright-pierce.com](http://www.wright-pierce.com)

CITY OF EAST PROVIDENCE, RHODE ISLAND  
BOOTH AVENUE SLOPE STABILIZATION

**DRAWING**  
C-5





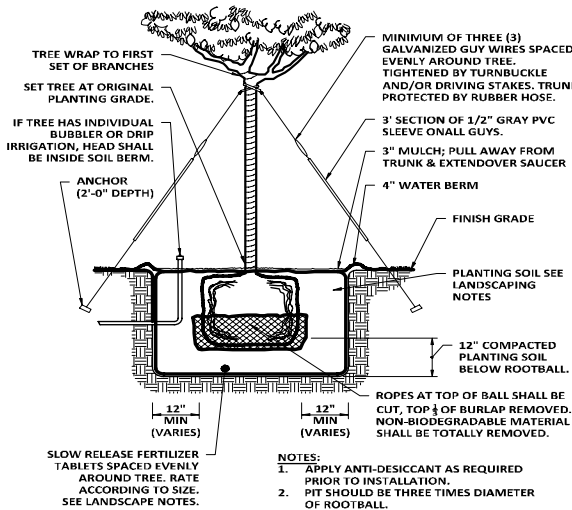


### PLANTING SCHEDULE

SYMB.	QTY	BOT. NAME	COMMON NAME	SIZE	ROOT	COMMENTS
FRUIT TREES						
AT	5	ASIMINA TRILOBA	PAWPAW	7'-8' HT	B&B	SINGLE STEM, FULL, HEAVY, MATCHED
DECIDUOUS TREES						
AR	5	ACER RUBRUM	RED MAPLE	2 1/2"-3" CAL.	B&B	SINGLE STEM, FULL, HEAVY, MATCHED
BRUSH BRANCHES FOR SLOPE STABILIZATION						
	200	CEPHALANTHUS OCCIDENTALIS	BUTTONBUSH	3' BRANCH	BARE ROOT	PLANT IN FALL, 3' O.C.
	200	SALIX DISCOLOR	PUSSY WILLOW	3' BRANCH	BARE ROOT	PLANT IN FALL, 3' O.C.
	200	VIBURNUM DENTATUM	ARROWWOOD	3' BRANCH	BARE ROOT	PLANT IN FALL, 3' O.C.
SEED & LOAM						
	800 SF	BIORETENTION SEED MIX	SEE SPECIFICATIONS			
	4,600 SF	GRASS SEED MIX	SEE SPECIFICATIONS			

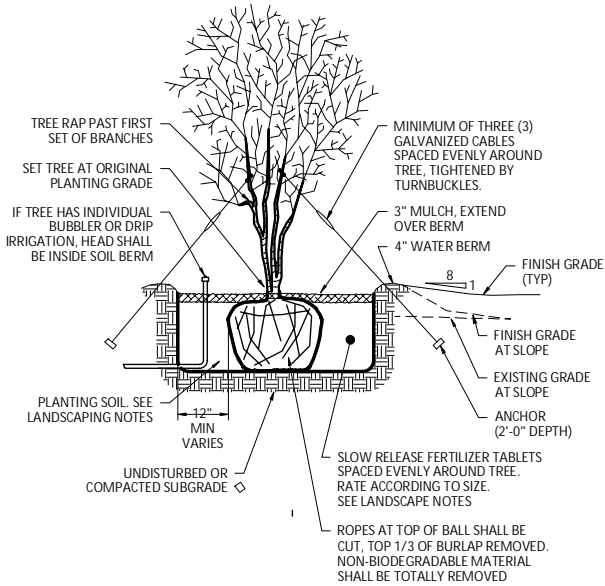
#### PLANTING NOTES:

- ALL NEW PLANT MATERIAL SHALL CONFORM TO THE REQUIREMENTS AS ESTABLISHED BY THE AMERICAN ASSOCIATION OF NURSERYMAN, LATEST EDITION. IN ADDITION, ALL NEW PLANT MATERIAL FOR THE PROJECT SHALL BE OF THE HIGHEST SPECIMEN QUALITY.
- SEE SPECIFICATIONS FOR ITEMS NOT COVERED ON THE PLANS AND DETAILS.
- CONTRACTOR SHALL INSPECT SITE PRIOR TO BEGINNING PLANTING OPERATIONS AND NOTIFY THE ENGINEER OF ANY CONDITIONS THAT ARE NOT SUITABLE TO PERFORMING PLANTING OPERATIONS. CONTRACTOR SHALL NOTIFY THE ENGINEER OF ANY CONDITIONS THAT WOULD PREVENT HEALTHY GROWTH OF PLANT MATERIAL.
- NO TREES SHALL BE PLANTED BEFORE ACCEPTANCE OF ROUGH GRADING. TREES SHALL BEAR SAME RELATIONSHIP TO FINISH GRADE AS THEY BORE TO PREVIOUS GRADE.
- PLANT GROUPING AND LOCATIONS ARE DIAGRAMMATIC. THE LOCATION OF PLANTS SHALL BE APPROVED IN THE FIELD BY THE LANDSCAPE ARCHITECT. PLANTS INSTALLED PRIOR TO FIELD STAKING OR DIRECTION BY THE LANDSCAPE ARCHITECT SHALL BE REPLACED AS DIRECTED BY THE LANDSCAPE ARCHITECT AT THE CONTRACTOR'S EXPENSE.
- PLANT MATERIAL DELIVERED ON SITE SHALL BE HEALED-IN AT A SHADY LOCATION UNTIL PLANTING AREA IS PREPARED FOR INSTALLATION. ANY PLANTS REMAINING UNPLANTED ON THE SITE FOR MORE THAN 24 HOURS SHALL BE PROTECTED AND MAINTAINED INCLUDING BUT NOT LIMITED TO WATER AND SHADE. DAMAGED OR STRESSED PLANTS SHALL BE REPLACED AT THE CONTRACTOR'S EXPENSE.
- THERE WILL BE NO SUBSTITUTIONS OF PLANT MATERIAL WITHOUT PRIOR WRITTEN APPROVAL BY THE LANDSCAPE ARCHITECT. ANY PROPOSED SUBSTITUTIONS OF PLANT SPECIES SHALL BE MADE WITH PLANTS OF EQUIVALENT OVERALL FORM HEIGHT, BRANCHING HABIT, FLOWER, LEAF, COLOR, FRUIT AND CULTURE ONLY AS APPROVED BY THE LANDSCAPE ARCHITECT/ENGINEER.
- THE GENERAL CONTRACTOR SHALL SUPPLY ALL NEW PLANT MATERIAL IN QUANTITIES SUFFICIENT TO COMPLETE THE PLANTING SHOWN ON THE DRAWINGS.
- THE CONTRACTOR SHALL MAINTAIN ALL PREPARED PLANTING AREAS FREE FROM DEBRIS. NO STORAGE OR STOCKPILING SHALL OCCUR ON PLANTING AREAS.
- THE CONTRACTOR IS TO USE CARE DURING EXCAVATION AND PLANTING TO AVOID DISTURBING OR DAMAGING ANY ADJACENT CONSTRUCTION SUBSURFACE DRAINAGE OR UTILITIES. ANY DAMAGE RESULTING FROM THIS CONSTRUCTION WILL BE THE CONTRACTOR'S RESPONSIBILITY AND SHALL BE RESTORED AT HIS EXPENSE TO THE SATISFACTION OF THE OWNER.
- STAKE LOCATION OF ALL PROPOSED PLANTING FOR APPROVAL BY THE LANDSCAPE ARCHITECT/ENGINEER PRIOR TO COMMENCEMENT OF PLANTING.
- THE CONTRACTOR SHALL SUPPLY PLANT MATERIAL IN THE QUANTITIES INDICATED ON THE PLANS. FOR DISCREPANCIES BETWEEN THE PLANS AND THE PLANT SCHEDULE, THE PLAN QUANTITIES SHALL PREVAIL.
- ALL PLANT MATERIAL IN CONTAINERS SHALL BE WELL ESTABLISHED ROOTED MATERIAL THAT OCCUPIES THE ENTIRE VOLUME OF SPECIFIED CONTAINER.
- PLANTS WITH GIRDING ROOTS SHALL BE REJECTED. CONTAINER GROWN PLANTS WITH TIGHT ROOT MASSES SHALL BE SCARIFIED PRIOR TO PLANTING.
- THE TREE ROOT FLARE SHALL BE EXPOSED AND PLANTED EVEN WITH THE FINISH GRADE. PREPARE ALL TREE PITS WITH PLANTING SOIL TO A MINIMUM DEPTH MATCHING THE DEPTH OF TREE ROOT BALLS.
- ALL PLANT BEDS ARE TO RECEIVE THREE INCHES (3") OF SHREDDED BARK MULCH AS SPECIFIED. NO SEPARATE PAY ITEM FOR MULCH OR AND/OR FERTILIZER PACKETS. PAID FOR UNDER PLANTING ITEMS.
- ALL EXISTING TREES TO REMAIN SHALL BE PROPERLY PROTECTED, PRUNED AND FERTILIZED PER THE SPECIFICATIONS.
- ALL LAWN AREAS DISTURBED BY CONSTRUCTION OPERATIONS INSIDE AND OUTSIDE THE LIMIT OF WORK SHALL BE LOAMED AND SEEDED AS SPECIFIED. ALL AREAS TO BE SEEDED SHALL RECEIVE SOIL PREPARATION AS SPECIFIED PRIOR TO SEEDING, UNLESS OTHERWISE NOTED ON PLAN.
- ALL AREAS TO BE SEEDED WITH GRASS SEED MIX SHALL RECEIVE 6" TOPSOIL PRIOR TO SEEDING.



### TREE INSTALLATION: 10' AND TALLER

SCALE: NTS



#### NOTES:

- APPLY ANTI-DESICCANT PRIOR TO PLANTING.
- STAKING METHOD FOR TREES UNDER 10' MAY BE SUBSTITUTED FOR GUY WIRE METHOD.
- PIT SHOULD BE THREE TIMES DIAMETER OF ROOTBALL.

### TREE INSTALLATION: MULTI-STEM

SCALE: NTS

SUBMISSIONS/REVISIONS		NO.	DATE
DESIGNED BY:	J. MICHAUD		
CAD COORD.:			
CHECKED BY:			
DATE:			
APPROVED BY:			
DATE:			
PROJECT NO.:	13981		



CITY OF EAST PROVIDENCE, RHODE ISLAND  
BOOTH AVENUE SLOPE STABILIZATION

### DRAWING

C-6

