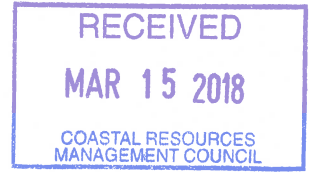


**Dave Beutel**

---

**From:** Perry Raso <perryraso@gmail.com>  
**Sent:** Wednesday, March 14, 2018 1:54 PM  
**To:** Dave Beutel  
**Subject:** Fwd: Message from KM\_C364e  
**Attachments:** SKM\_C364e18031414200.pdf



This is the revised proposed lease area.  
Perry

--

Perry Raso  
Matunuck Oyster Farm. Matunuck Oyster Bar. Matunuck Vegetable Farm  
[rhodyoysters.com](http://rhodyoysters.com)



# Aquaculture Location Sketch

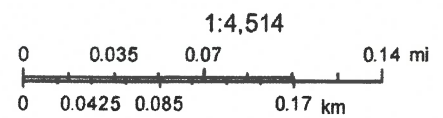


3/14/2018, 1:50:35 PM

## Areas

- Override 1
- Aquaculture Area
- SAV 2016
- SAV 2012

- SAV 2009
- SAV 2006
- Red: Red
- Green: Green
- Blue: Blue



Map data © OpenStreetMap contributors, CC-BY-SA  
RI Division of Fish & Wildlife / Marine Fisheries / Julia Livermore

RECEIVED  
MAR 15 2018  
COASTAL RESOURCES  
MANAGEMENT COUNCIL

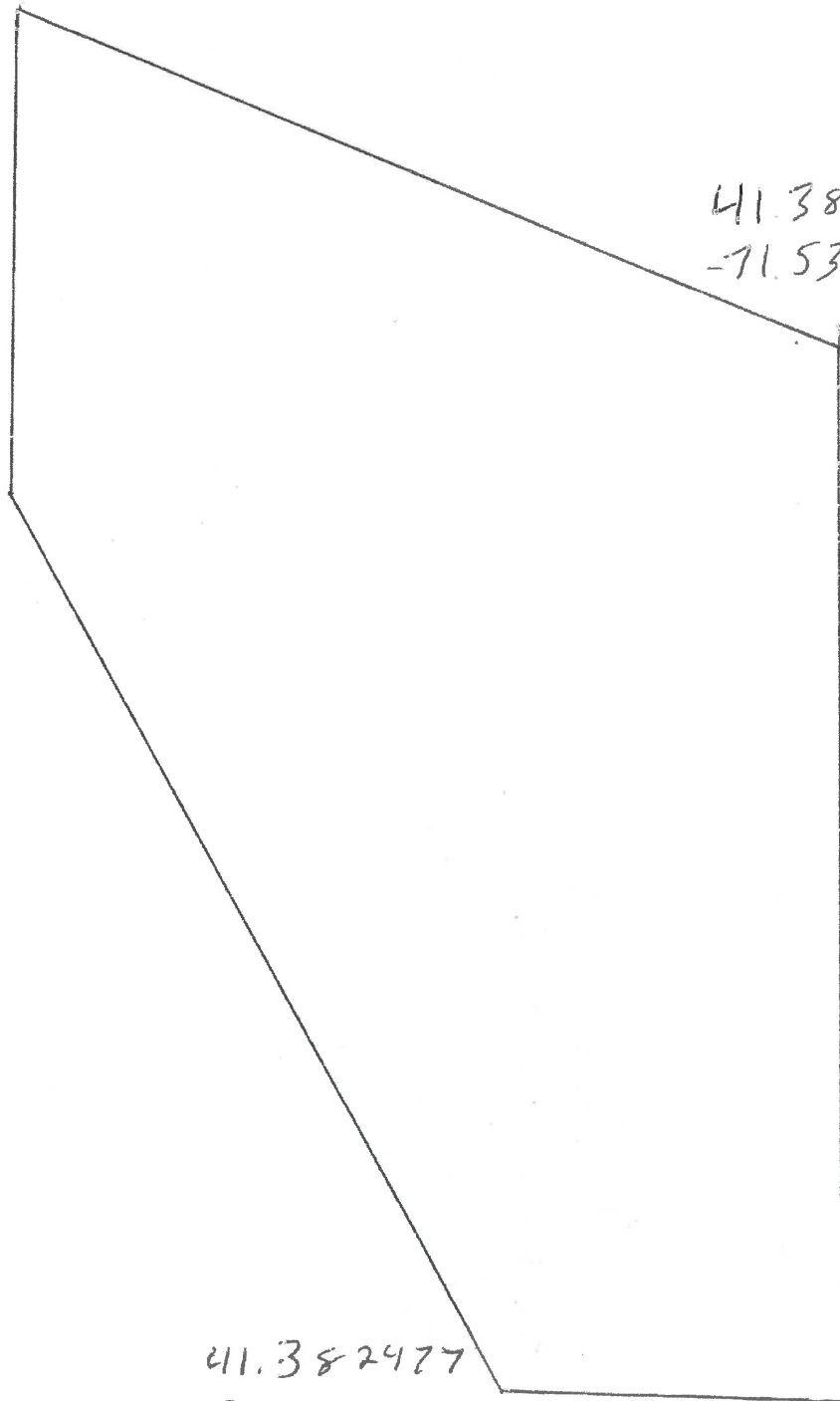
41.38465  
-71.538417

41.383926  
-71.53743

41.382477  
-71.53773

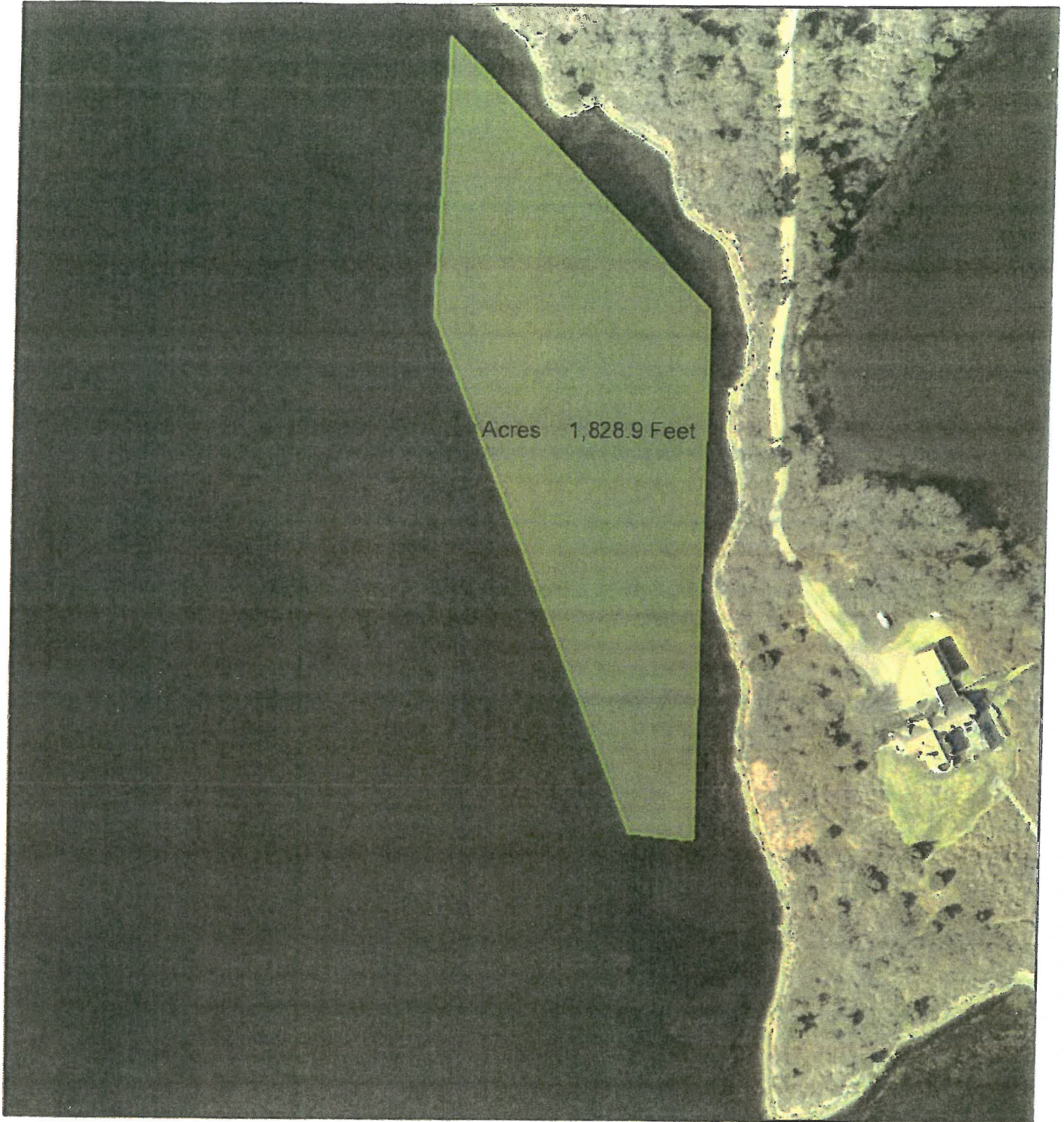
41.382477  
-71.53773

41.382493  
-71.537419





# Aquaculture Location Sketch

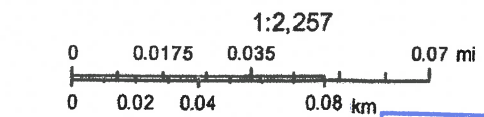


1/31/2018, 7:11:28 PM

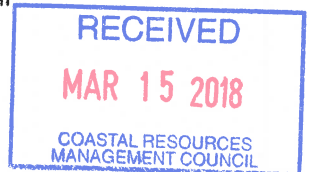
## Areas

-  Override 1
-  Red: Red
-  Green: Green
-  Blue: Blue

*B*



Map data © OpenStreetMap contributors, CC-BY-SA





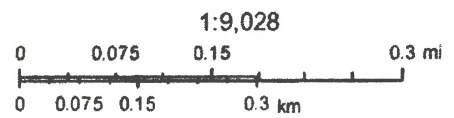
# Aquaculture Location Sketch



2/2/2018, 9:38:37 AM

## Areas

- Override 1
- Red: Red
- Green: Green
- Blue: Blue



Map data © OpenStreetMap contributors CC-BY-SA

**RECEIVED**  
**MAR 15 2018**  
COASTAL RESOURCES  
MANAGEMENT COUNCIL

Applicant