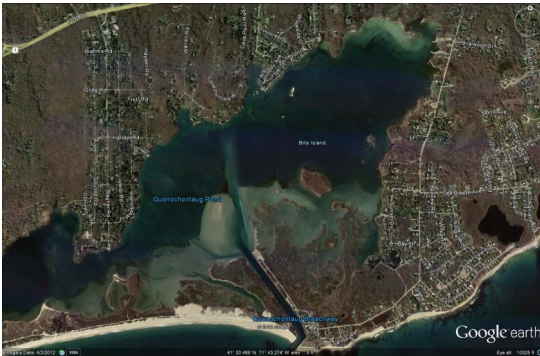


CRMC gets NOAA funds to restore Quonochontaug Pond in Charlestown

V. 3 Iss. 6
August 2017



An aerial view of Quonochontaug Pond in Charlestown
(Image courtesy of Town of Charlestown)

The CRMC has been awarded nearly \$1 million in funding from the National Oceanic and Atmospheric Administration (NOAA) for salt marsh restoration and enhancement at Quonochontaug Pond in Charlestown and Westerly. The \$982,103 the CRMC received comes from NOAA's Coastal Resilience Grant program, which supports projects designed to help coastal communities prepare for extreme weather and climate-related hazards like sea level rise. It will be used to restore 30 acres of degraded salt marsh in Quonochontaug (nicknamed "Quonnie") Pond as well as an adjacent area used for recreational fishing. Plans for the restoration

include depositing dredged material on the marsh surface to fill man-made ditches and elevate it, and replanting the marsh with native species. This work builds on previous restoration planning efforts in the area, which were funded by a 2014 Hurricane Sandy Coastal Resiliency award from the National Fish and Wildlife Foundation.

Through this award, the CRMC and its project partners aim to improve the condition and resilience of the marshes within Quonochontaug Pond through the use of dredged material taken from shoaled areas within the manmade breachway to raise the salt marsh surface elevations. Material will be dredged and placed or sprayed on approximately 30 acres of marsh area, and graded to elevations best-suited for native salt marsh plant species.

[Learn more](#)

CRMC prepares RISD summer program for 'Going with the Flow'

Students enrolled in the Rhode Island School of Design's summer camp program at Tillinghast Farm in Barrington are preparing for life underwater, and Rhode Island Coastal Resources Management Council's (CRMC) Janet Freedman, a coastal geologist, gave them pointers on the realities of sea level rise in Rhode Island in 2050 and beyond, something their generation will likely live to see.

Kids from all over Rhode Island, ages six through 12, walked along the beach collecting shells and wading through the water



while Freedman talked to them about rising seas, the impacts on salt marshes like the one at RISD Beach, and potential innovations to adapt, on July 11 for the program called, "Go with the Flow."

The RISD Continuing Education Department has several classes in the Young Artists Program, including this one, and there are classes held at the farm throughout the year - during winter, spring and summer vacations, as well as weekends. A catalog of courses can be found here: <https://ce.risd.edu/>.

[Learn More](#)



Upcoming RI CRS community resilience workshop 9/28

Join the Association of State Floodplain Managers, Coastal States Organization, RIEMA, RI CRMC, the Narragansett Bay Research Reserve, and URI for a free workshop on the National Flood Insurance Program's (NFIP) Community Rating System (CRS). The CRS is a federal incentive program that provides flood insurance policyholders with discounts on their premiums in exchange for their community taking actions to reduce flood risk. This workshop will specifically highlight how communities may achieve success in the "green" elements of the program.

[Learn More](#)

To remove your name from our mailing list, please [click here](#). Questions or comments can be sent to ldwyer@crmc.ri.gov.

Want to receive our improved Coastal Features printed newsletter? Email ldwyer@crmc.ri.gov.