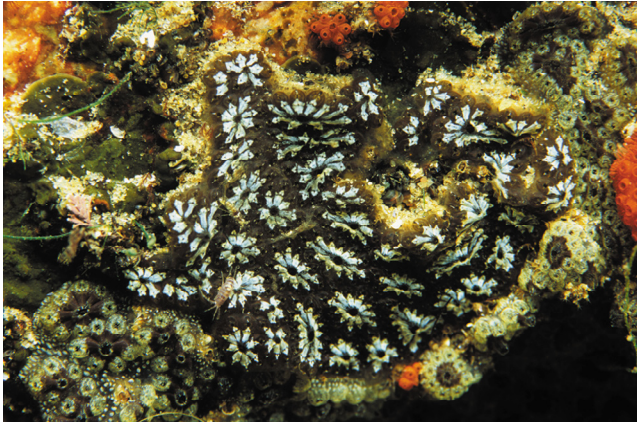


## GUIDE TO MARINE INVADERS IN RI COASTAL WATERS

# *Botryllus schlosseri*

star tunicate (colonial tunicate, ascidian)



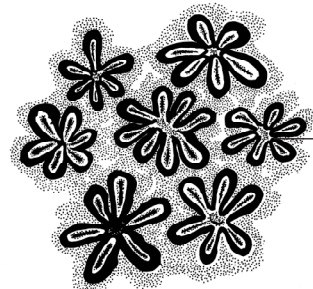
Andrew Martinez

### PHYSICAL DESCRIPTION

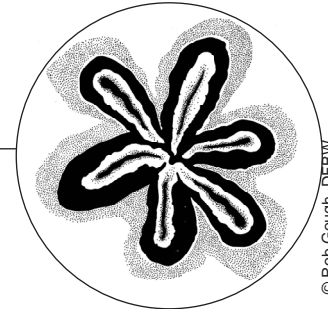
- Colonies of zooids (individual animals) arranged in conspicuous starlike systems
- Each zooid 0.06 in (2-4 mm) across with 5-20 zooids in a system
- Colonies grow up to 3-4 in (7.5-10 cm) wide
- May form lobes when mature
- Color variable: green, violet, blue-black, brown and yellow

### HABITAT PREFERENCE

- Grows on a variety of stable substrates including algae, rocks, docks, pilings and ships
- Primarily subtidal; occasionally found in lower intertidal zone
- Can survive in estuaries with low salinities (18 ppt or less)



*Botryllus schlosseri* colony



system of zooids (5-20)

© Rob Gough, DFBW

1

2

3

4

5

6

7

8

