

# GUIDE TO MARINE INVADERS IN RI COASTAL WATERS

## *Carcinus maenas* European green crab



Robert Buchsbaum



Andrew Martinez

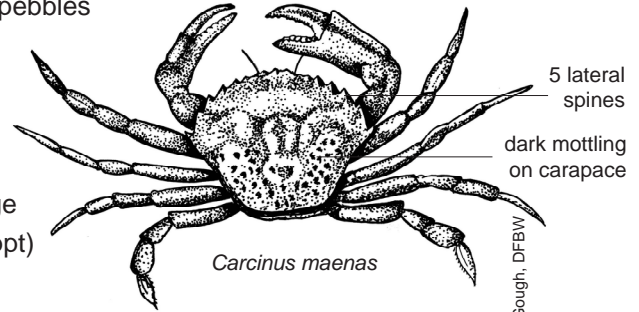
Female *Carcinus maenas* carrying eggs

### PHYSICAL DESCRIPTION

- 5 lateral spines on each side of carapace (shell)
- Color variable: green, reddish orange, or tan carapace with darker mottling
- Carapace width up to 3.6 in (7.6 cm)

### HABITAT PREFERENCE

- Occurs in the lower intertidal and nearshore subtidal zones, usually on mud, sand, or pebbles
- Prefers sheltered areas
- Common in salt marshes, sandy beaches, and rocky shores
- Able to tolerate wide range of salinities (as low as 6 ppt)



© Rob Cough, DFBW

1

2

3

4

5

6

7

8

