



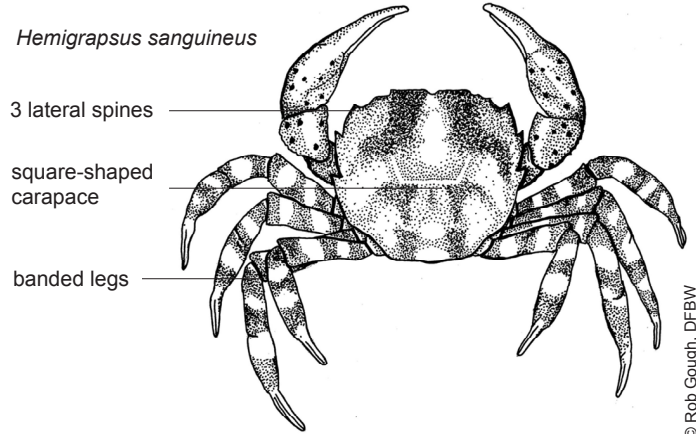
Salem Sound Coastwatch

HABITAT PREFERENCE

- Occurs primarily in mid to low intertidal zones and sometimes the subtidal zone
- Tends to aggregate in high densities under rocks
- Tolerant of a wide range of salinity and temperature
- Prefers rocks and cobble but may be found in soft sediments and other habitats

PHYSICAL DESCRIPTION

- 3 lateral spines on each side of a square-shaped carapace (shell)
- Light and dark bands on legs with red spots on the claws
- Color variable: commonly orange-brown, also green and maroon
- Carapace width up to 2 in (5 cm)
- Larger males have fleshy bulb at base of pincers



© Rob Gough, DFBW

1

2

3

4

5

6

7

8

GUIDE TO MARINE INVADERS IN RI COASTAL WATERS

Hemigrapsus sanguineus

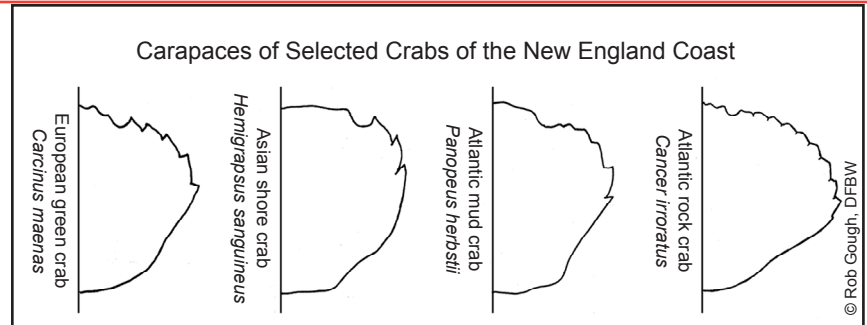
Asian shore crab

INVASION STATUS & ECOLOGICAL CONCERNS

Abundant in rocky intertidal habitats, *Hemigrapsus sanguineus* is a native of the western Pacific Ocean ranging from Russia, the Korean and Chinese coasts to Hong Kong, and Japan. It was first recorded in the United States in 1988 at Townsends Inlet, Cape May County, New Jersey. It is now well established and rapidly expanding its range along the Atlantic coast from Maine to North Carolina. Female *H. sanguineus* produce up to 50,000 eggs three to four times from May to September, compared to native crabs that reproduce twice a season. The larvae are free-floating for nearly a month before becoming juvenile crabs, increasing the possibility of being transported to new areas. An opportunistic omnivore, it feeds on salt marsh grass, algae, invertebrates, and larval and juvenile fishes.

SIMILAR SPECIES

Hemigrapsus sanguineus may be mistaken for several other crabs in New England, including the European green crab (*Carcinus maenas*), the Atlantic mud crab (*Panopeus herbstii*) and others. To differentiate the region's crabs, it is helpful to take careful note of the carapace (shell), particularly its shape and the number of marginal spines on each side (see figure on right).



This card is adapted from an original series produced by Salem Sound Coastwatch (www.salemsound.org). The original series was funded by the MA EOEPA Office of Coastal Zone Management with funding from the U.S.F.W.S. For more information please visit www.mass.gov/czm/invasives/monitor/reporting.htm. The production of this adapted card was funded by the RI Coastal Resources Management Council with funding from the U.S. Fish & Wildlife Service. To report findings please email kcute@crmc.ri.gov or call (401) 783-7772 or (401) 783-3370.