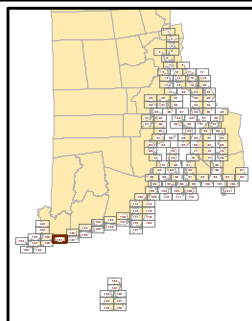




Map
131



1:10,000
0 500 1,000 1,500 2,000 Feet

This map is not the product of a professional land survey. It was created for general reference, informational, planning, and guidance use, and is not a legally authoritative source as to the location of natural or manmade features. No warranty is expressed or implied, related to the spatial accuracy, reliability, completeness, or currentness of this map.

- | | |
|--------------------|--------------------------------|
| Developed Upland | Salt Marsh |
| Undeveloped Upland | Brackish Marsh |
| Rocky Intertidal | Scrub/Shrub Transitional Marsh |
| Beach | Fresh Marsh |
| Tidal Flat | Hardened Shores |
| Open Water | Buildings |
| Swamp | Parcel Boundaries |
| Tidal Creek | |

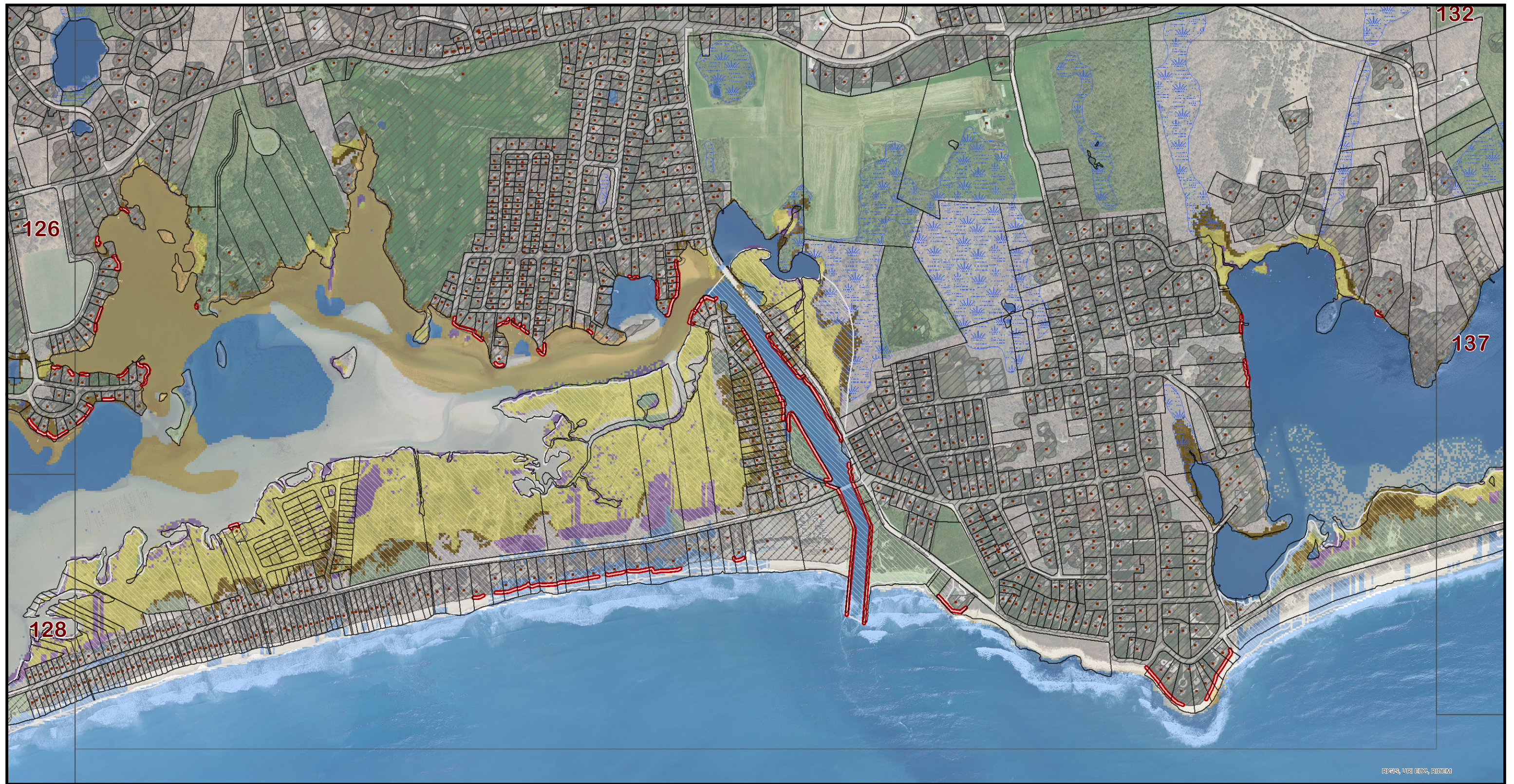
Tidal Marsh Vulnerability Analysis: Current Condition



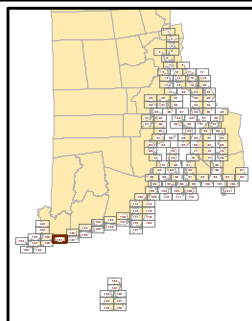
NOAA grant award #:
NA12OAR4310108



Map produced by Kevin Ruddock. 4/2/2014



Map
131



1:10,000
0 500 1,000 1,500 2,000 Feet

This map is not the product of a professional land survey. It was created for general reference, informational, planning, and guidance use, and is not a legally authoritative source as to the location of natural or manmade features. No warranty is expressed or implied, related to the spatial accuracy, reliability, completeness, or currentness of this map.

- Potential Marsh Zone
- Persistent Marsh Zone
- Potential Marsh Loss
- Open Water and Tidal Flat
- Current Fresh Wetlands
- Protected Open Space

- Hardened Shores
- Buildings
- Parcel Boundaries
- Developed Land
- CRMC Coastal Barriers

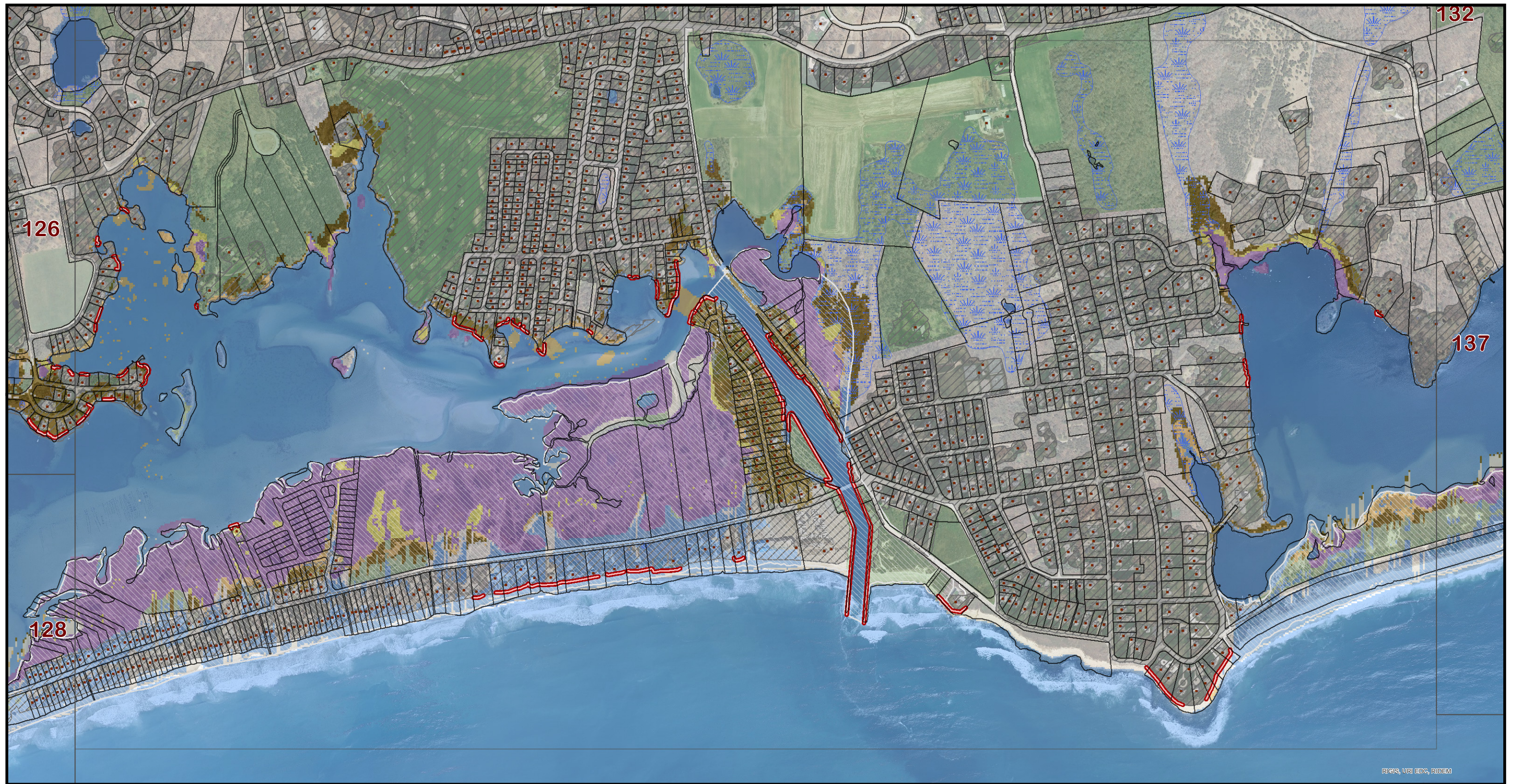
Tidal Marsh Vulnerability Analysis: One Foot Sea Level Rise Model



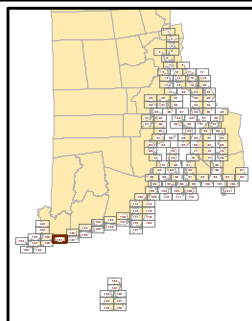
NOAA grant award #:
NA12OAR4310108



Map produced by Kevin Ruddock. 4/1/2014



Map
131



1:10,000
0 500 1,000 1,500 2,000 Feet

This map is not the product of a professional land survey. It was created for general reference, informational, planning, and guidance use, and is not a legally authoritative source as to the location of natural or manmade features. No warranty is expressed or implied, related to the spatial accuracy, reliability, completeness, or currentness of this map.

- Potential Marsh Zone
- Persistent Marsh Zone
- Potential Marsh Loss
- Open Water and Tidal Flat
- Current Fresh Wetlands
- Protected Open Space

- Hardened Shores
- Buildings
- Parcel Boundaries
- Developed Land
- CRMC Coastal Barriers

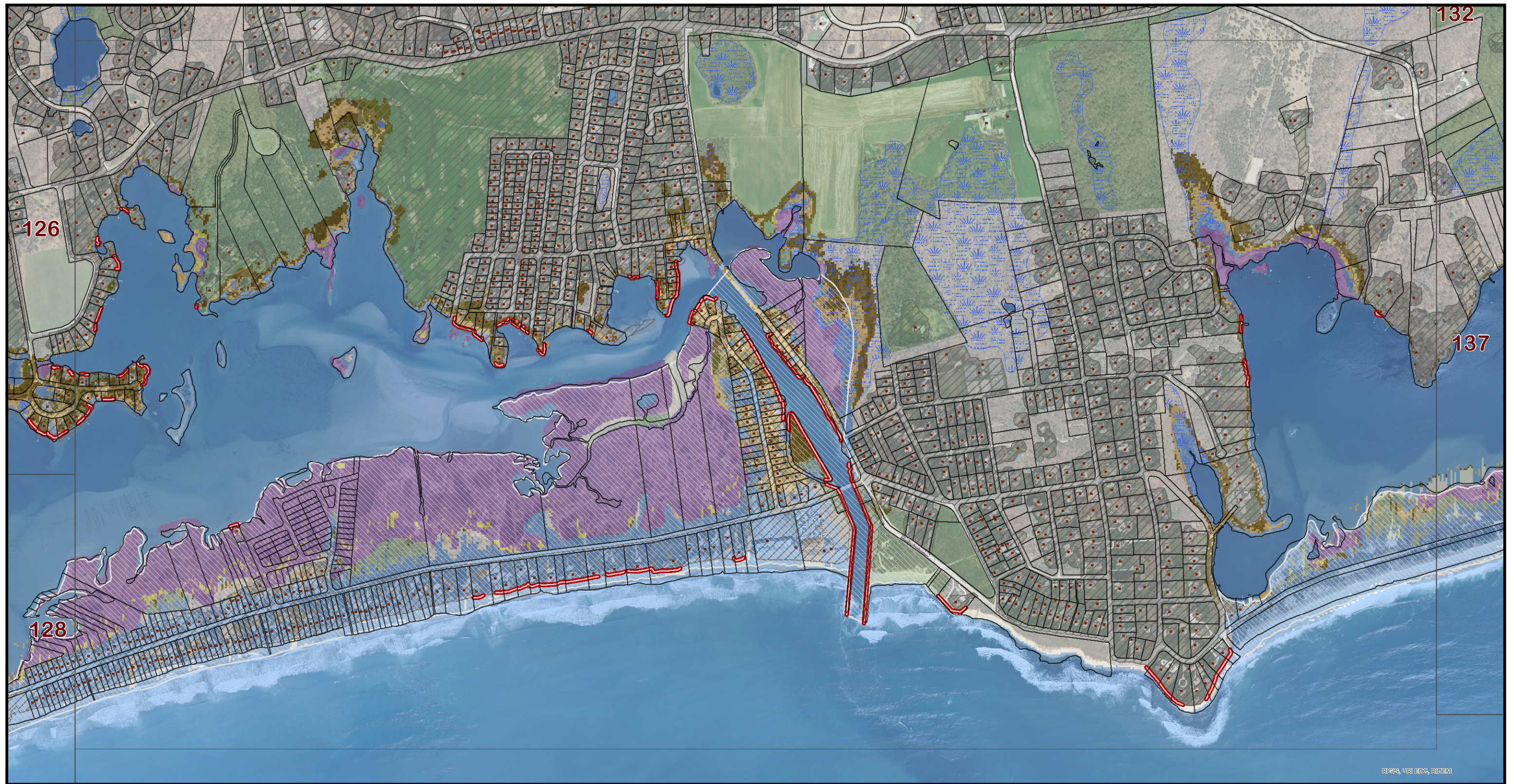
Tidal Marsh Vulnerability Analysis: Three Foot Sea Level Rise Model



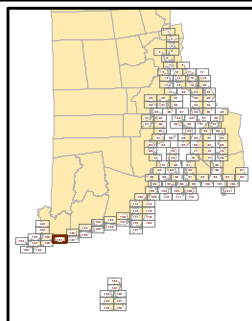
NOAA grant award #:
NA12OAR4310108



Map produced by Kevin Ruddock. 4/1/2014



Map
131



1:10,000
0 500 1,000 1,500 2,000 Feet

This map is not the product of a professional land survey. It was created for general reference, informational, planning, and guidance use, and is not a legally authoritative source as to the location of natural or manmade features. No warranty is expressed or implied, related to the spatial accuracy, reliability, completeness, or currentness of this map.

- Potential Marsh Zone
- Persistent Marsh Zone
- Potential Marsh Loss
- Open Water and Tidal Flat
- Current Fresh Wetlands
- Protected Open Space

- Hardened Shores
- Buildings
- Parcel Boundaries
- Developed Land
- CRMC Coastal Barriers

Tidal Marsh Vulnerability Analysis: Five Foot Sea Level Rise Model



NOAA grant award #:
NA120AR4310108



Map produced by Kevin Ruddock. 4/1/2014