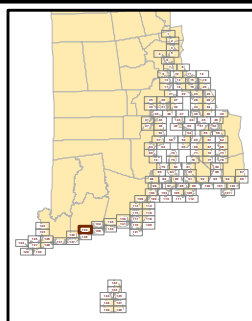


Map  
133



1:10,000  
0 500 1,000 1,500 2,000 Feet

This map is not the product of a professional land survey. It was created for general reference, informational, planning, and guidance use, and is not a legally authoritative source as to the location of natural or manmade features. No warranty is expressed or implied, related to the spatial accuracy, reliability, completeness, or currentness of this map.

- |                    |                                |
|--------------------|--------------------------------|
| Developed Upland   | Salt Marsh                     |
| Undeveloped Upland | Brackish Marsh                 |
| Rocky Intertidal   | Scrub/Shrub Transitional Marsh |
| Beach              | Fresh Marsh                    |
| Tidal Flat         | Hardened Shores                |
| Open Water         | Buildings                      |
| Swamp              | Parcel Boundaries              |
| Tidal Creek        |                                |

## Tidal Marsh Vulnerability Analysis: Current Condition

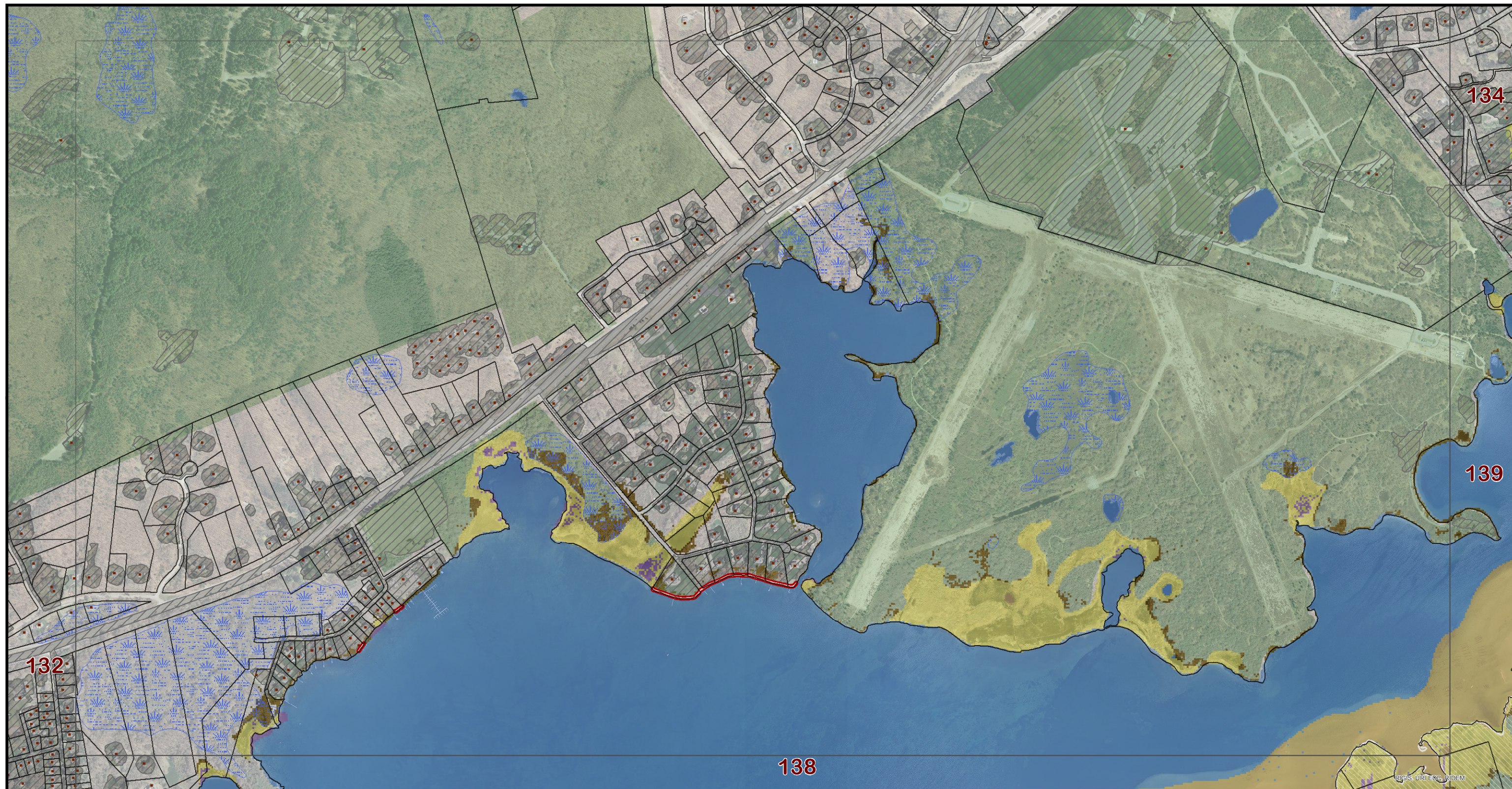


NOAA grant award #:  
NA12OAR4310108

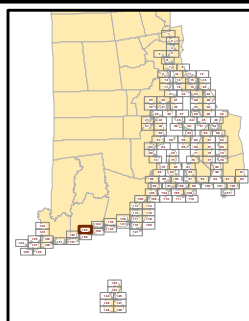


Map produced by Kevin Ruddock. 4/2/2014





Map  
133



1:10,000  
0 500 1,000 1,500 2,000 Feet

This map is not the product of a professional land survey. It was created for general reference, informational, planning, and guidance use, and is not a legally authoritative source as to the location of natural or manmade features. No warranty is expressed or implied, related to the spatial accuracy, reliability, completeness, or currentness of this map.

- Potential Marsh Zone
- Persistent Marsh Zone
- Potential Marsh Loss
- Open Water and Tidal Flat
- Current Fresh Wetlands
- Protected Open Space
- Hardened Shores
- Buildings
- Parcel Boundaries
- Developed Land
- CRMC Coastal Barriers

## Tidal Marsh Vulnerability Analysis: One Foot Sea Level Rise Model

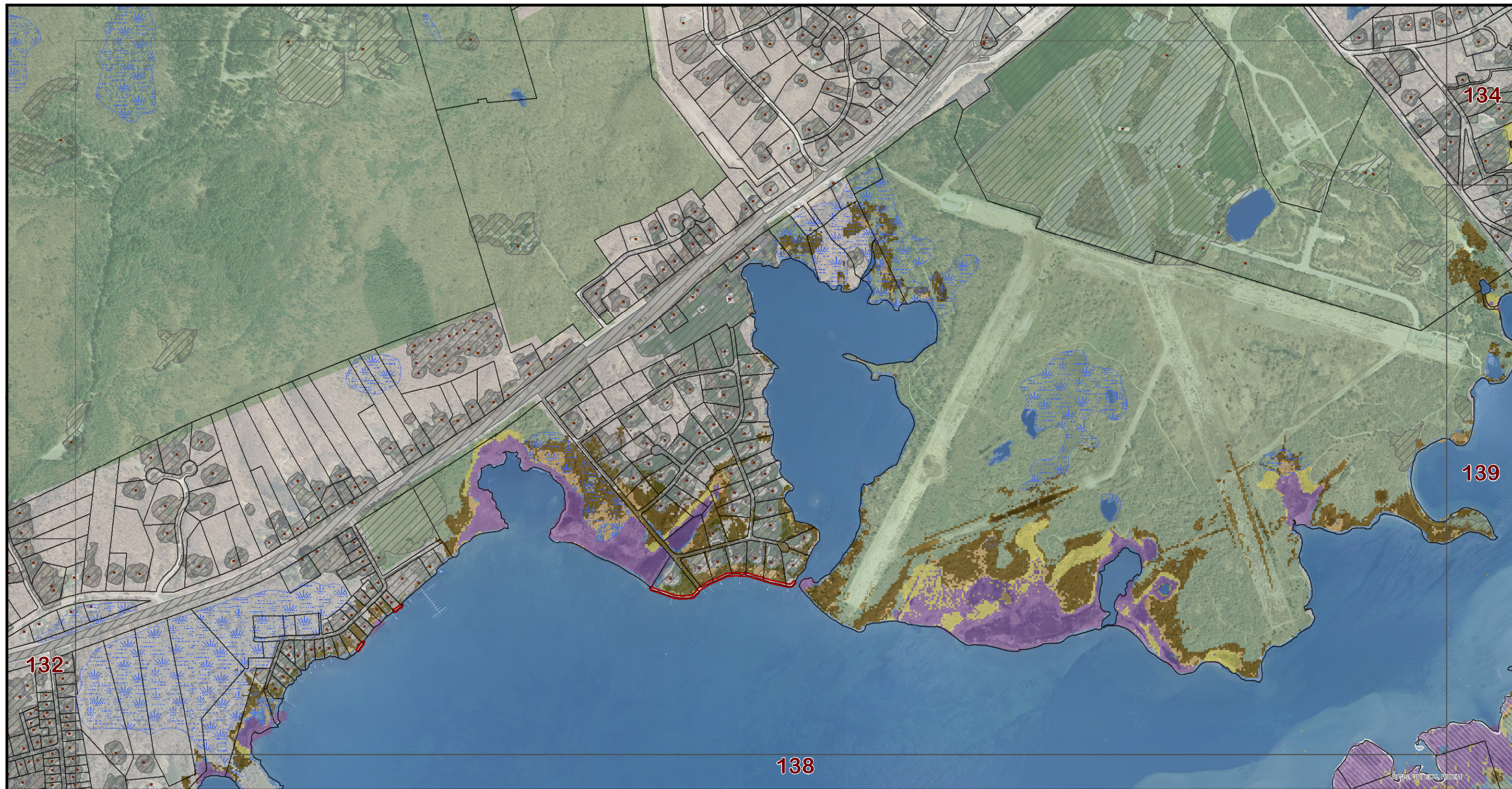


NOAA grant award #:  
NA120AR4310108

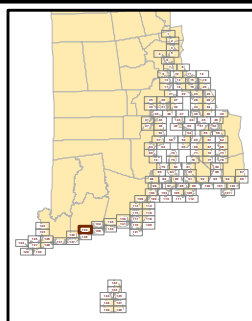


Map produced by Kevin Ruddock. 4/1/2014





Map  
133



1:10,000  
0 500 1,000 1,500 2,000 Feet

This map is not the product of a professional land survey. It was created for general reference, informational, planning, and guidance use, and is not a legally authoritative source as to the location of natural or manmade features. No warranty is expressed or implied, related to the spatial accuracy, reliability, completeness, or currentness of this map.

- Potential Marsh Zone
- Persistent Marsh Zone
- Potential Marsh Loss
- Open Water and Tidal Flat
- Current Fresh Wetlands
- Protected Open Space

- Hardened Shores
- Buildings
- Parcel Boundaries
- Developed Land
- CRMC Coastal Barriers

## Tidal Marsh Vulnerability Analysis: Three Foot Sea Level Rise Model

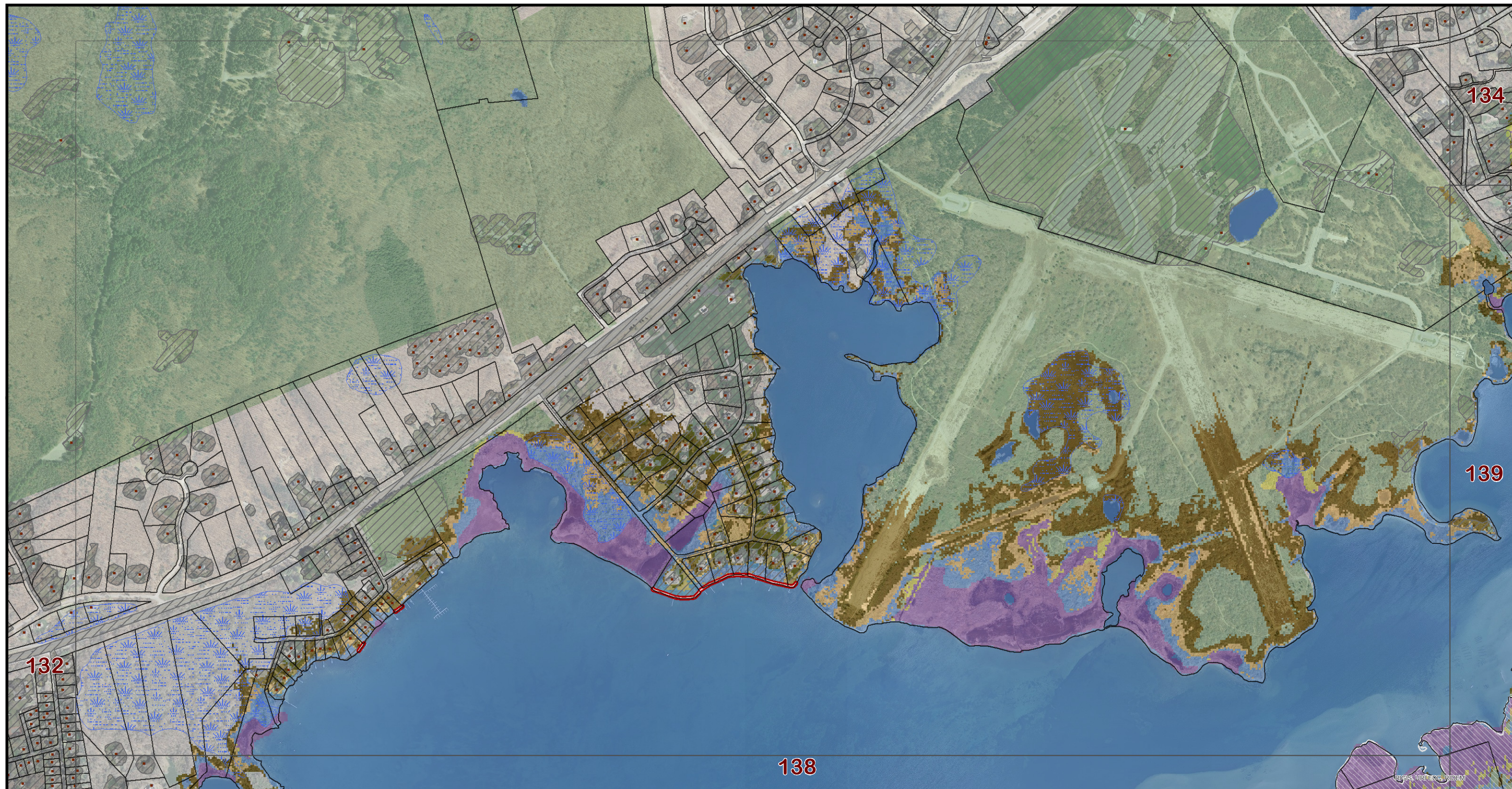


NOAA grant award #:  
NA120AR4310108

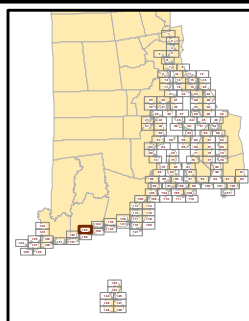


Map produced by Kevin Ruddock. 4/1/2014





Map  
133



1:10,000  
0 500 1,000 1,500 2,000 Feet

This map is not the product of a professional land survey. It was created for general reference, informational, planning, and guidance use, and is not a legally authoritative source as to the location of natural or manmade features. No warranty is expressed or implied, related to the spatial accuracy, reliability, completeness, or currentness of this map.

- Potential Marsh Zone
- Persistent Marsh Zone
- Potential Marsh Loss
- Open Water and Tidal Flat
- Current Fresh Wetlands
- Protected Open Space

- Hardened Shores
- Buildings
- Parcel Boundaries
- Developed Land
- CRMC Coastal Barriers

## Tidal Marsh Vulnerability Analysis: Five Foot Sea Level Rise Model



NOAA grant award #:  
NA120AR4310108



Map produced by Kevin Ruddock. 4/1/2014