



Memorandum

To: Michael Tikoian, Chair; Council members; Grover Fugate; and Jeff Willis
From: James Boyd, CRMC Coastal Policy Analyst
Date: October 17, 2008
Re: Proposed water type changes for Greenwich Bay and amend description for existing quahog resource preserve in Greenwich Cove

1. Proposed water type changes

CRMC Staff recommend the following water type changes for Greenwich Bay. They are depicted on the attached Figures 1 through 4.

1. Chepiwanoxet Point –Change from Type 2 to Type 1 (Figures 1 and 2)
2. Greenwich Cove - Modify the line dividing Type 2 and Type 5 waters (Figures 1 and 2)
3. Baker's Creek barrier spit - Change from Type 2 to Type 1 (Figures 3 and 4)
4. Baker's Creek headland area - Change from Type 2 to Type 1 (Figures 3 and 4)

Chepiwanoxet Point

Chepiwanoxet Point is located along the western shore of Greenwich Bay at the mouth of Greenwich Cove. It is approximately ten acres in size and owned by the City of Warwick. The waters around Chepiwanoxet Point are currently classified as Type 2, Low-intensity Use and the area supports public access and is designated by the city as public open space (See existing water type, Figure 1). The southern shoreline along Chepiwanoxet forms a boundary for the CRMC designated quahog resource preserve at the mouth of Greenwich Cove (See Greenwich Bay SAMP Section 390.2). The northern shoreline of the point is also designated as an important horseshoe crab spawning area within Greenwich Bay and there are specific SAMP policy provisions and regulations to protect horseshoe crab spawning areas (See SAMP Section 390.6). In addition, there is a coastal wetland and small barrier spit along the northern section of Chepiwanoxet that would benefit from the more protective conservation area Type 1 status.

The recommended area for the water type change should include the shoreline of lots 11, 29, 83, and 94 in plat 221 to a distance of 500 feet off shore (See Figure 2). The change from type 2 waters to type 1 is appropriate as the Chepiwanoxet Point coastal resources meet the definition of Type 1 designation for conservation and will provide further protection for these resources under the provisions of the Coastal Resources Management Program (CRMP). The proposed water

type change is also consistent with the recommended action in Section 390.2B of the Greenwich Bay SAMP.

Greenwich Cove

Staff recommends relocating the existing line delineating Type 5 waters southward to coincide with a line drawn from the tip of Long Point northwesterly to the opposite shoreline and intersecting the most northeasterly corner boundary of the Marina Perimeter Limit for Norton's Marina authorized under CRMC Assent 2002-05-5. The corner boundary coordinate is 343158E, 212929N. The existing Type 2 waters west of Chepiwanoxet Point shall extend southward until meeting the amended line delineating Type 5 waters (See Figures 1 and 2).

Baker's Creek barrier spit

The barrier spit is located at the mouth of Baker's Creek as it empties into Greenwich Bay along the Nausauket shoreline just east of Apponaug Cove and Cedar Tree Point. This barrier spit is designated as an undeveloped barrier in the CRMP and is owned by the City of Warwick. The change from Type 2 to Type 1 classification will further protect this barrier and the Baker's Creek wetland complex, one of the largest tidal wetlands in Greenwich Bay and designated as a critical area in the SAMP (See SAMP Section 390.7). These resources are more consistent with the conservation area status of Type 1 waters. The recommended area for the water type change should include the extent of lot 201 in plat 367 to a distance of 500 feet off shore (See Figures 3 and 4).

Baker's Creek headland area

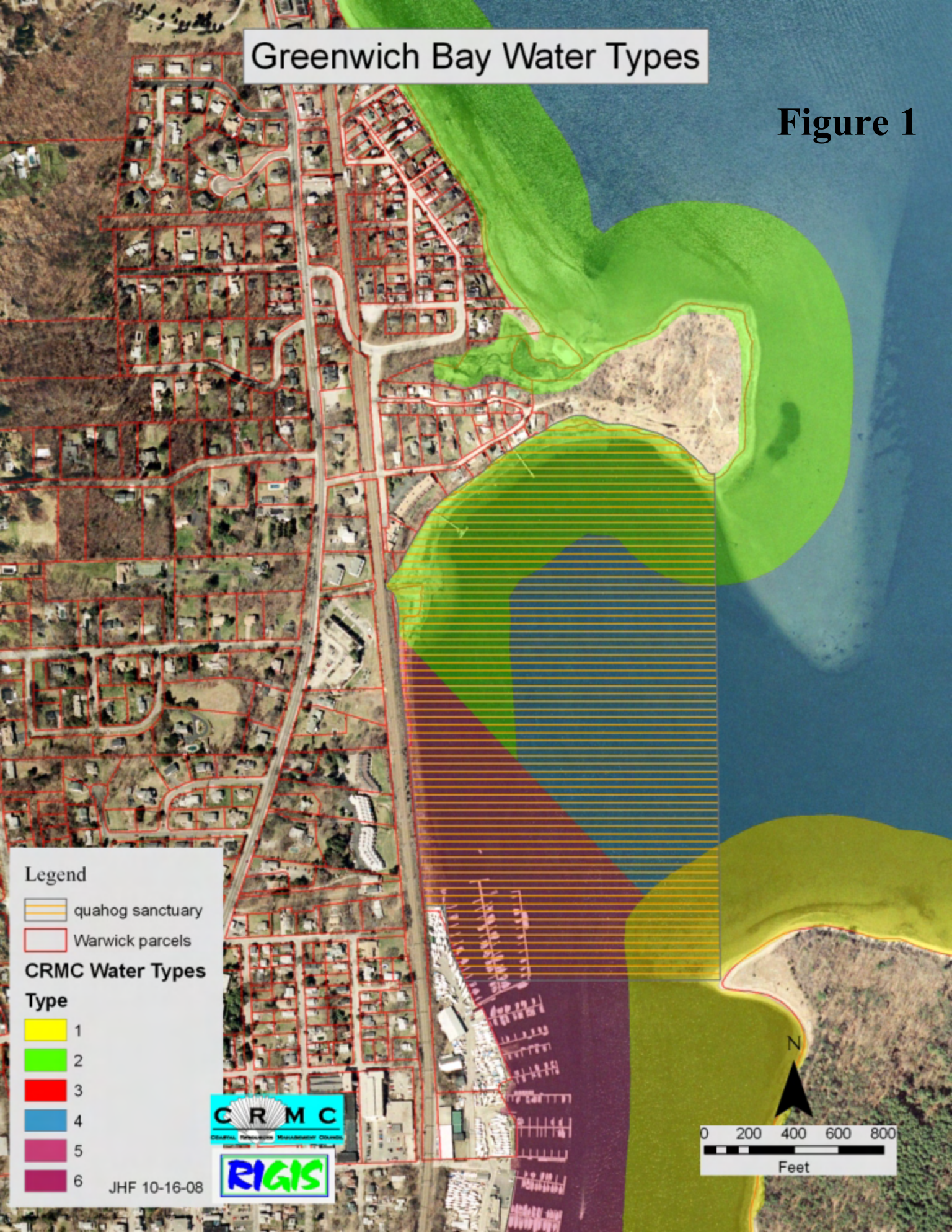
The undeveloped headland area is immediately east of and abutting the Baker's Creek tidal wetland complex. As noted above, this wetland complex is designated within the Greenwich Bay SAMP as a critical area, one of only two (the other being Mary's Creek) in all of Greenwich Bay. The shoreline is relatively undisturbed and there are no shoreline protection structures in this area. The change from Type 2 to Type 1 classification will further protect this beach area, including the adjacent barrier spit, and the Baker's Creek wetland complex. The recommended area for the water type change should include the extent of lots 114 and 116 in plat 367 to a distance of 500 feet off shore (See Figures 3 and 4).

2. Proposed amended Greenwich Cove quahog resource preserve area

The current quahog resource preserve in Greenwich Cove is "delineated by the shoreline and lines from Long Point due west and the southernmost point of Chepiwanoxet Point due south" (See SAMP Section 390.2A and Figure 1). The line running west from Long Point to the opposite shoreline bifurcates Norton's Marina and a Marina Perimeter Limit previously established by CRMC Assent 2002-05-5. Staff recommends that the southern boundary line of the quahog resource preserve be modified to be coincident with the proposed amended line for Type 5 waters, as described above (See Figure 2).

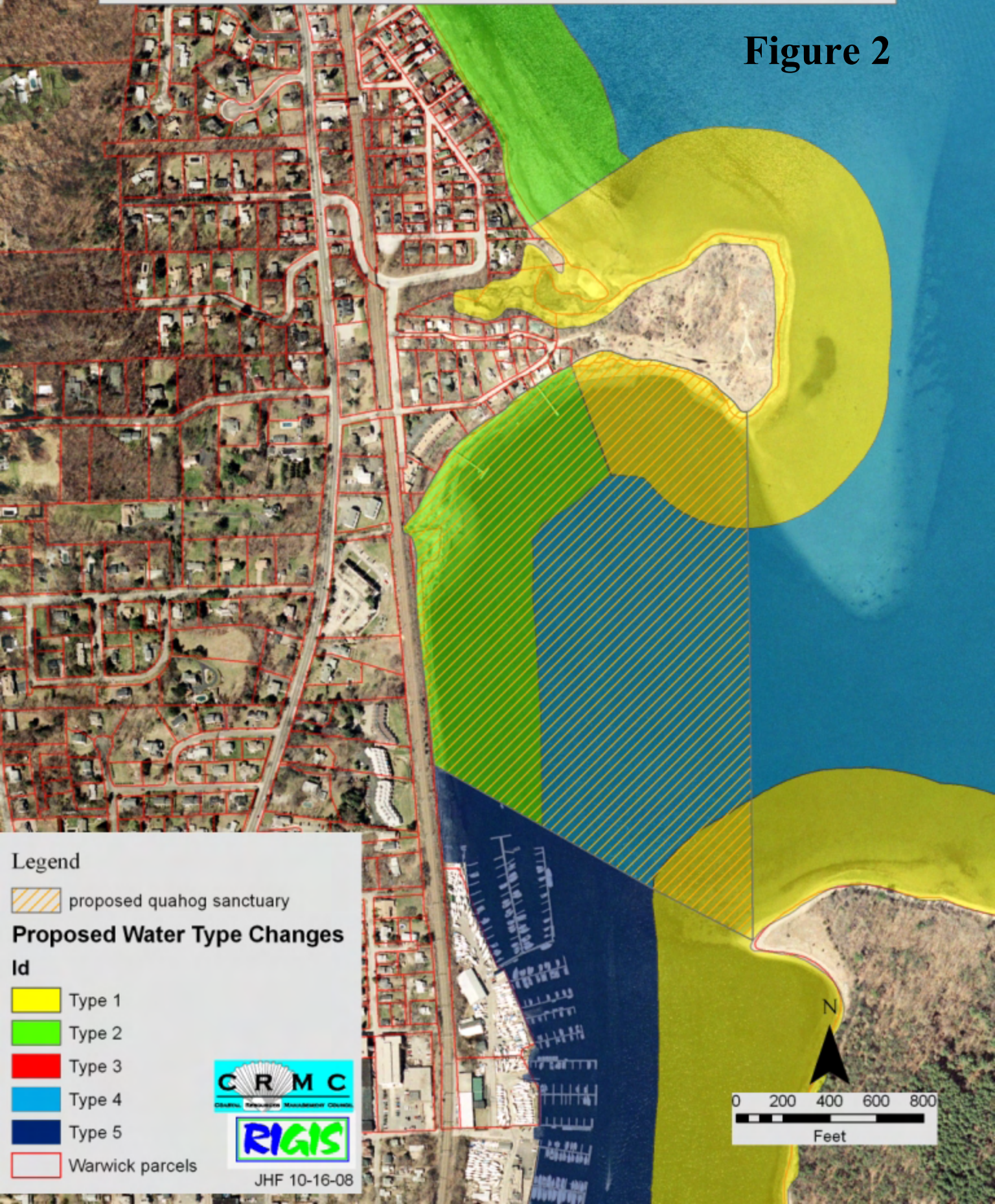
Greenwich Bay Water Types

Figure 1




Greenwich Bay Proposed Water Type Changes

Figure 2




Legend

 proposed quahog sanctuary

Proposed Water Type Changes

Id

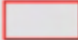
 Type 1

 Type 2

 Type 3

 Type 4

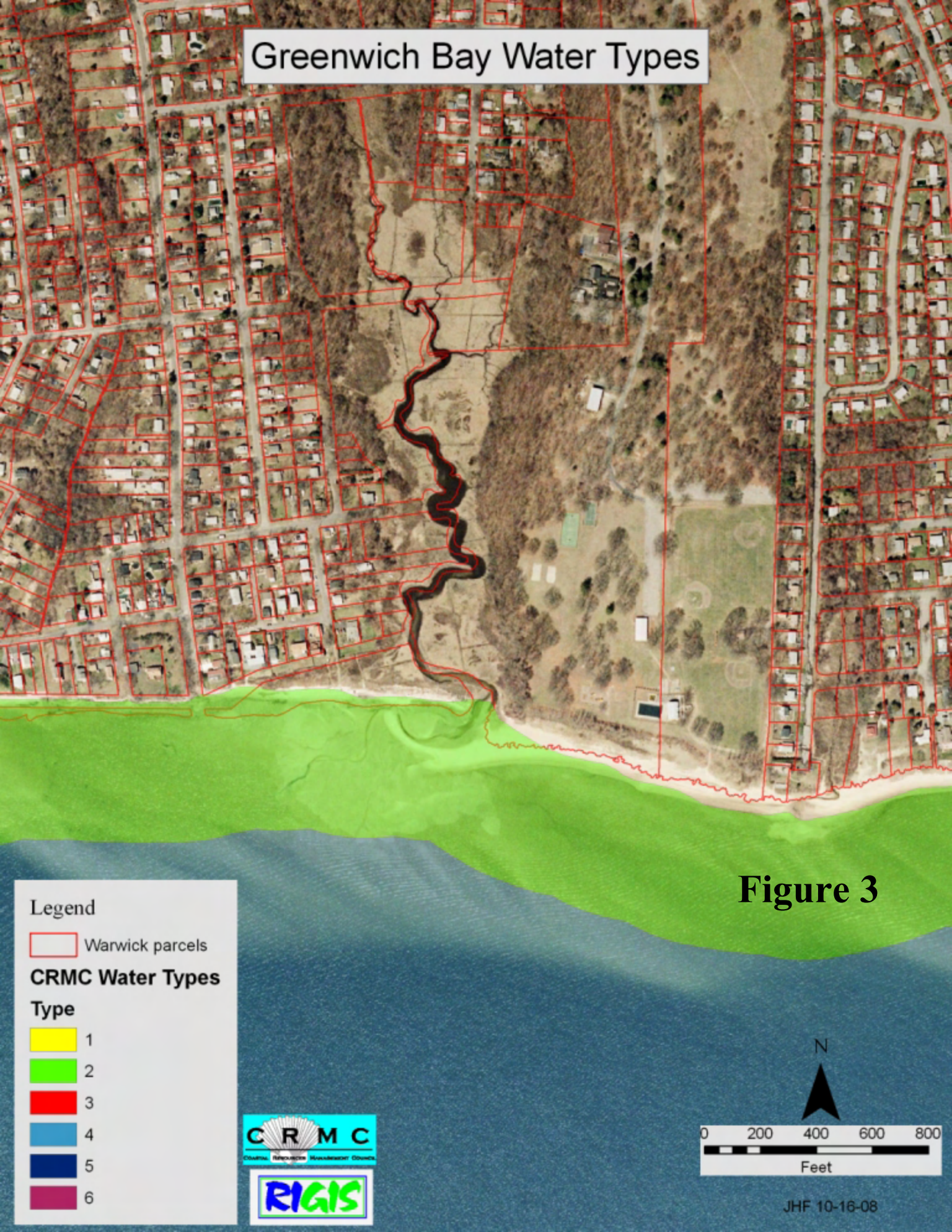
 Type 5

 Warwick parcels

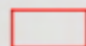


JHF 10-16-08

Greenwich Bay Water Types



Legend

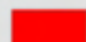
 Warwick parcels

CRMC Water Types

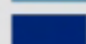
Type

 1

 2

 3

 4

 5

 6



Figure 3

N



0 200 400 600 800
Feet

JHF 10-16-08

Greenwich Bay Proposed Water Type Changes

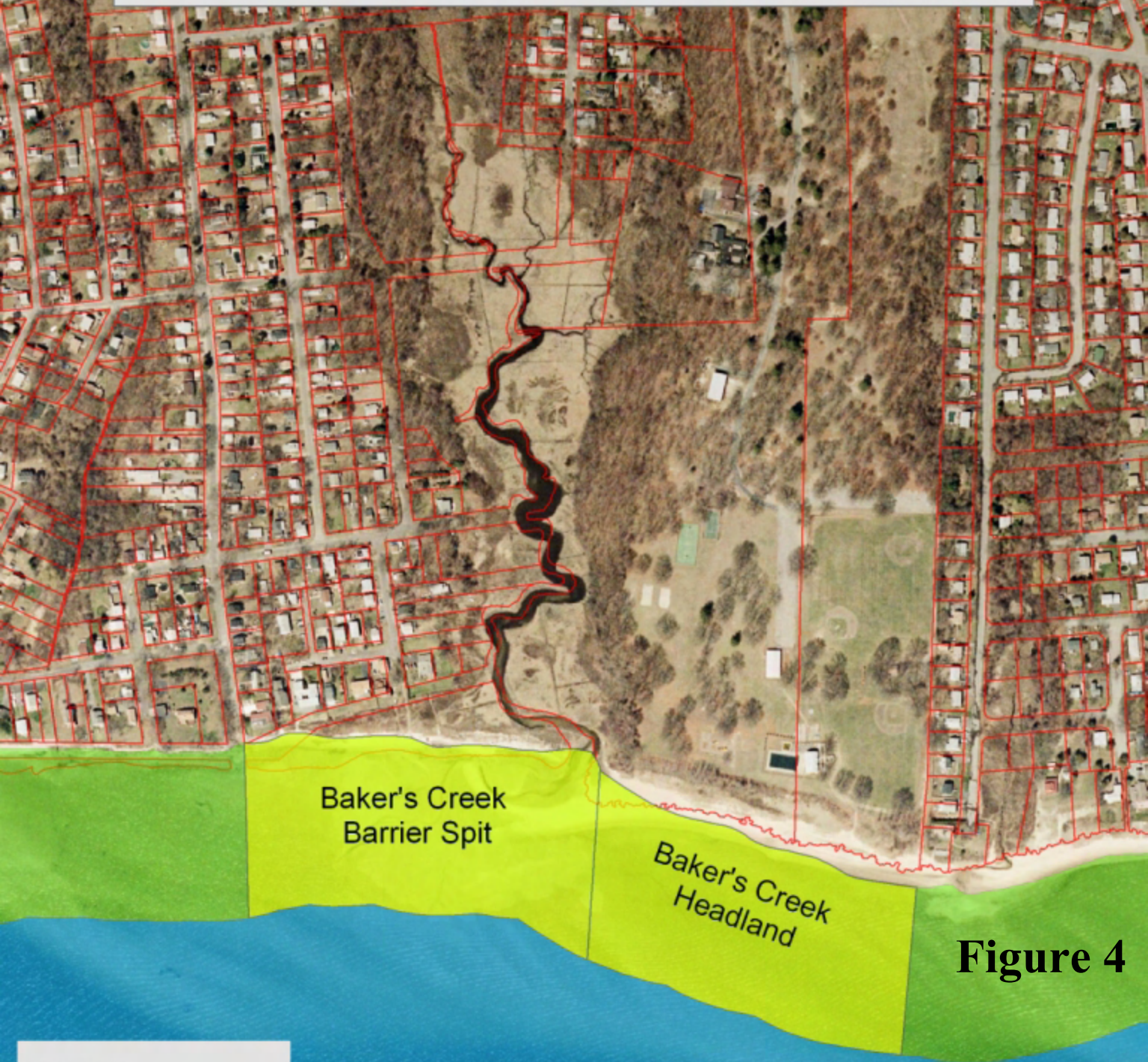


Figure 4

Legend

proposed changes

Type 1

Type 2

Type 3

Type 4

Type 5

Warwick parcels



N

0 200 400 600 800
Feet

JHF 10-16-08