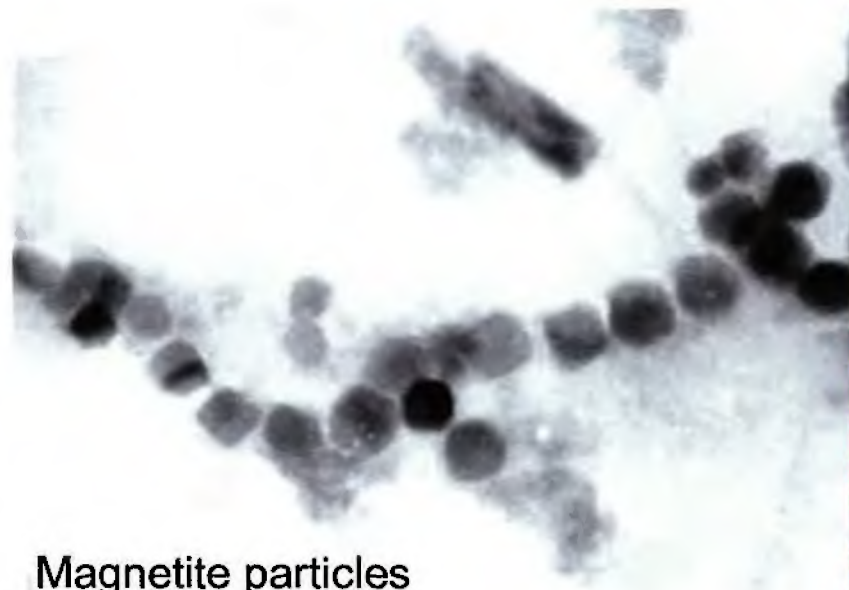


Detection by Fish, Invertebrates and Sharks

- Evolved in response to natural geomagnetic (0 Hz) fields and low frequency (<10 Hz) bioelectric fields.
 - Magnetite in fish bones/organs, some invertebrates associated with magnetosensitivity
 - Specialized structures in elasmobranchs and sturgeon associated with electrosensitivity
- Used to guide migration (geomagnetic field) or detect prey over small distances (bioelectric fields)



Magnetite particles

