

PROPOSED LEGEND

NOT ALL ITEMS SHOWN WILL APPEAR ON PLANS

	PROPERTY LINE		DRAINAGE LINE
	BUILDING SETBACKS		PERFORATED SUBDRAIN
	CHAINLINK FENCE		SWALE
	GUARDRAIL SEE LAYOUT AND MATERIALS NOTE 6.		SEWER FORCE MAIN
	RETAINING WALL		GAS LINE
	MINOR CONTOUR LINE		WATER LINE
	MAJOR CONTOUR LINE		HYDRANT ASSEMBLY
	SPOT ELEVATION		WATER SHUT OFF
	EDGE OF PAVEMENT		WATER VALVE
	BITUMINOUS BERM		THRUST BLOCK
	CONCRETE CURB (RIDOT STD 7.1.0)		SEWER LINE
	MONOLITHIC CONCRETE CURB AND SIDEWALK		OVERHEAD WIRE
	BUILDING FOOTPRINT		ELECTRIC, TELEPHONE, CABLE LINE
	BUILDING OVERHANG		LIMIT OF DISTURBANCE/ LIMIT OF CLEARING
	ASPHALT PAVEMENT		SEDIMENTATION BARRIER, SILT FENCE (RIDOT STD 9.2.0), COMPOST SOCK OR APPROVED EQUAL
	HEAVY DUTY ASPHALT PAVEMENT		SLOPES STEEPER THAN 3:1 (2:1 OR 1:1 SLOPES)
	HEAVY DUTY CONCRETE		UNDERGROUND INFILTRATION OUTLINE
	CONCRETE		POND ACCESS
	ASPHALT SIDEWALK		RIPRAP
	SAWCUT LINE		SAND FILTER
	SIGN (RIDOT STD 24.6.2 AS APPLICABLE)		BIO RETENTION
	SINGLE LIGHT		CATCH BASIN
	DOUBLE LIGHT		DOUBLE CATCH BASIN
	OVERHANGING LIGHT		MANHOLE
	ACCESSIBLE PARKING SPACE SYMBOLS		FLARED END SECTION
	BUILDING INGRESS/EGRESS		HEADWALL

GENERAL NOTES:

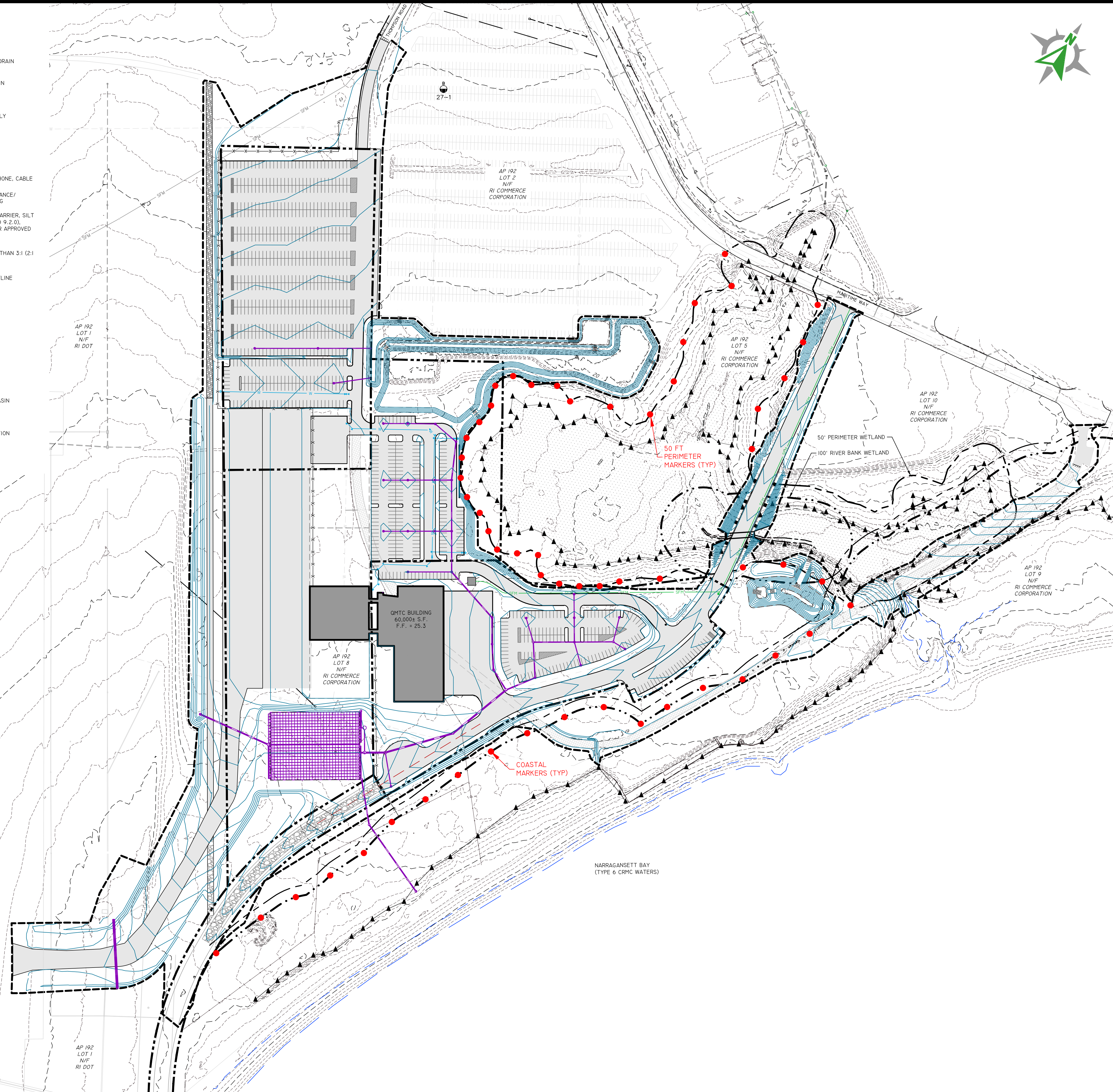
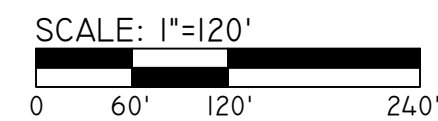
- ALL UNDERGROUND UTILITIES SHOWN ON THIS PLAN ARE APPROXIMATE. DIPRETE ENGINEERING IS NOT RESPONSIBLE FOR MISSING UNDERGROUND UTILITIES, EITHER IN SERVICE OR ABANDONED. THE CONTRACTOR SHALL VERIFY THE LOCATION OF ALL EXISTING UTILITIES, BOTH UNDERGROUND AND OVERHEAD, BEFORE ANY WORK BEGINS IN ACCORDANCE WITH THE "DIGSAFE PROGRAM LAW" ENACTED BY THE RI LEGISLATURE AND BY CONTACTING THE INDIVIDUAL UTILITY COMPANIES. EXCAVATION SHALL BE IN ACCORDANCE WITH ALL STATUTES, ORDINANCES, RULES AND REGULATIONS OF THE STATE OR FEDERAL AGENCIES THAT MAY BE APPLICABLE. ANY DAMAGE TO EXISTING UTILITIES SHALL BE THE CONTRACTOR'S RESPONSIBILITY TO REPAIR. (PLEASE CONTACT DIGSAFE 72 WORKING HOURS PRIOR TO ANY CONSTRUCTION AT 1-888-344-7233)
- CONTRACTOR TO NOTIFY DESIGN ENGINEER WITH ANY DISCREPANCIES.
- CONTRACTOR SHALL OBTAIN ALL NECESSARY LOCAL PERMITS PRIOR TO CONSTRUCTION.
- ANY DAMAGE TO PRIVATE PROPERTY CAUSED BY THE CONTRACTOR SHALL BE REPAIRED BY THE CONTRACTOR AT NO ADDITIONAL COST TO THE OWNER.
- CONTRACTOR TO COMPLY WITH ALL APPLICABLE EROSION CONTROL REQUIREMENTS IN ACCORDANCE WITH LOCAL AND STATE REGULATIONS.
- ANY PROPRIETARY PRODUCTS REFERENCED IN THIS PLAN SET ARE REPRESENTATIVE OF THE MINIMUM DESIGN REQUIREMENTS FOR THE PURPOSE IT PROPOSES TO SERVE. ALTERNATIVES TO ANY PROPRIETARY PRODUCT MAY BE SUBMITTED TO THE ENGINEER OF RECORD FOR CONSIDERATION, WHICH MUST BE ACCOMPANIED BY APPROPRIATE SPECIFICATION SHEETS / DESIGN CALCULATIONS THAT DEMONSTRATE THE ALTERNATIVE(S) MEET THE MINIMUM DESIGN PARAMETERS OF THE PRODUCT SHOWN ON THE PLANS. NO ALTERNATIVES MAY BE USED WITHOUT THE WRITTEN APPROVAL OF THE ENGINEER OF RECORD.

GRADING AND UTILITY NOTES:

- THE CONTRACTOR MUST COORDINATE WITH ALL OF THE APPROPRIATE UTILITY COMPANIES FOR AGREEMENTS TO SERVICE THE PROPOSED BUILDING. THIS MUST BE DONE PRIOR TO CONSTRUCTION. NO REPRESENTATIONS ARE MADE BY DIPRETE ENGINEERING THAT UTILITY SERVICE IS AVAILABLE.
- PRIOR TO START OF CONSTRUCTION, CONTRACTOR MUST VERIFY EXISTING PAVEMENT ELEVATIONS AT INTERFACE WITH PROPOSED PAVEMENTS, AND EXISTING GROUND ELEVATIONS ADJACENT TO DRAINAGE OUTLETS TO ASSURE PROPER TRANSITIONS BETWEEN EXISTING AND PROPOSED FACILITIES. CONTRACTOR MUST NOTIFY DESIGN ENGINEER OF ANY DISCREPANCIES PRIOR TO CONSTRUCTION.
- ALL CUT AND FILL AREAS ARE TO BE DONE UNDER THE DIRECTION OF A PROFESSIONAL GEOTECHNICAL ENGINEER WITH TESTING AND CERTIFICATION TO BE PROVIDED TO THE APPLICANT AT THE COMPLETION OF THE PROJECT. DIPRETE ENGINEERING IS NOT PROVIDING THE FILL SPECIFICATION, GEOTECHNICAL ENGINEERING, STRUCTURAL ENGINEERING SERVICES, OR SUPERVISION AS PART OF THESE DRAWINGS.
- NO STOCKPILING OF MATERIAL TO BE LOCATED IN THE RIGHT OF WAY AND NO OPEN TRENCHES ARE TO BE LEFT OVERNIGHT.
- ALL LOAM IN DISTURBED AREAS TO BE STOCKPILED FOR FUTURE USE.
- ALL EXCESS SOIL, TREES, ROCKS, BOULDERS, AND OTHER REFUSE, MUST BE DISCARDED OFF SITE IN AN ACCEPTABLE MANNER AT AN APPROVED LOCATION. STUMPS MUST BE GROUND ON SITE OR REMOVED.
- NO STUMP DUMPS ARE PROPOSED ON SITE.
- ALL DRAINAGE PIPING TO BE HIGH-DENSITY POLYETHYLENE (HDPE) WITH WATERTIGHT JOINTS WHERE INSTALLED WITHIN THE SEASONAL HIGH GROUNDWATER, UNLESS NOTED OTHERWISE ON THE PLANS OR IN THE SPECIFICATIONS. ALL STORMWATER PIPE WITHIN THE STATE'S RIGHT OF WAY TO BE REINFORCED CONCRETE PIPE (RCP).
- ALL DRAINAGE STRUCTURES MUST BE WATERTIGHT.
- SITE LIGHTING (TEMPORARY AND PERMANENT) MUST BE DIRECTED AWAY FROM AND SHIELDED FROM ENVIRONMENTALLY SENSITIVE AREAS AND ADJUTING LANDS. EXACT LOCATIONS OF LIGHT POLES TO BE COORDINATED WITH OTHER UTILITIES AND ARE TO BE LOCATED WITHIN THE STREET RIGHTS OF WAY. FINAL LIGHTING AND CONDUIT LOCATIONS BY OTHERS.

CRMC NOTES:

- THE LIMIT OF DISTURBANCE IS AS SHOWN ON PLANS
- CONSTRUCTION IS ANTICIPATED TO BEGIN XXXX 2022 OR UPON RECEIPT OF ALL NECESSARY APPROVALS. CONSTRUCTION DURATION IS EXPECTED TO BE XXXXXXXX.



Development Services
 95 Cripe Street
 North Kingstown, RI 02852
 Tel: (401) 295-0044
 Fax: (401) 268-9885

NO.	REVISION	DATE	APP.

DESIGN BY	D.R.N.	CHECKED BY	D.R.N.
DRAWN BY	J.W.S.	ENGINEER	
SCALE	AS NOTED	PROJECT NO.	

CONTRACT NO.
 FILE NAME 1794-001-A18-PLAN.DWG

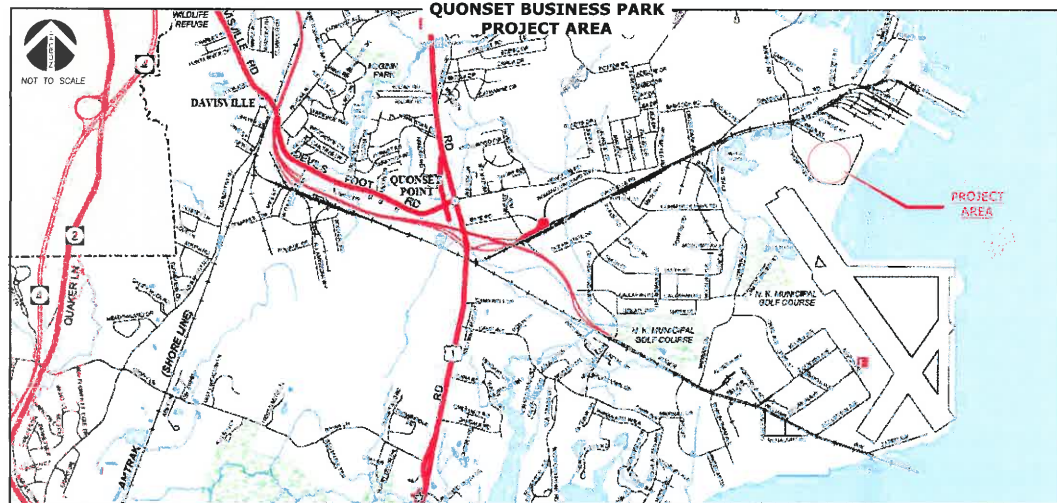
APPROVED
 William G. Young P.E.
 QDC Director of Public Works
 DATE December 2022

DRAWING TITLE
QMTC
 COASTAL MARKER PLAN
 Waterfront District
 Quonset Business Park®

SHEET NO.	1	DRAWING NO.	26805
1 OF 1 SHEETS			

QUONSET MULTIMODAL OFFSHORE WIND TRANSPORT CENTER (QMTC) AT QUONSET BUSINESS PARK

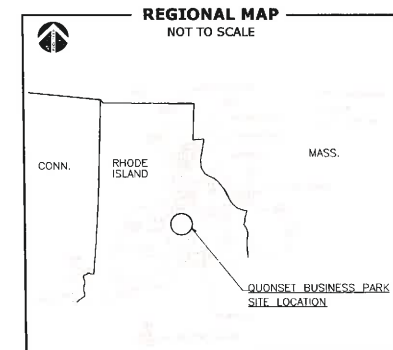
North Kingstown, Rhode Island
March 2022
Revised June 2022

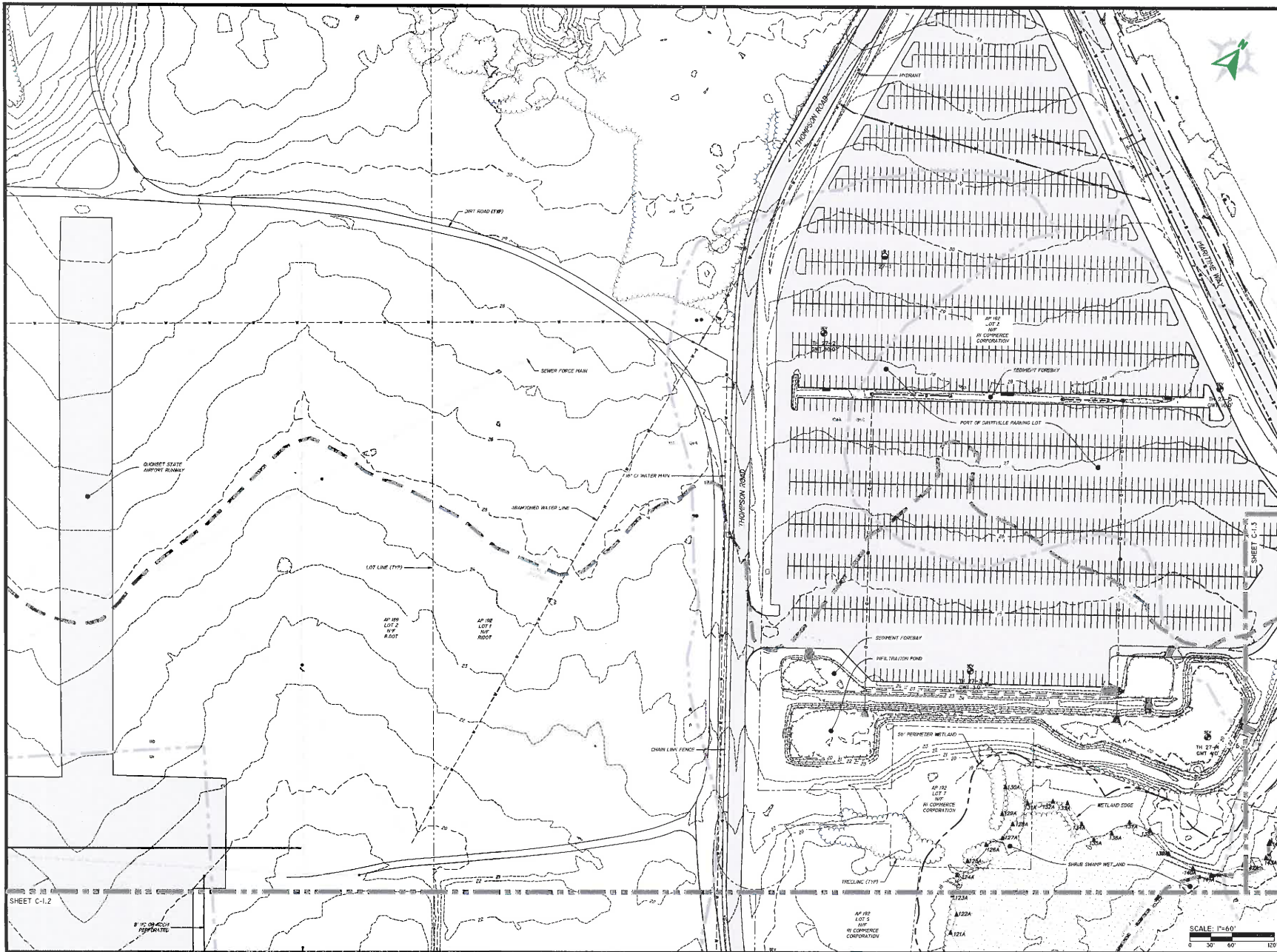


Planning & Development Services
95 Cripe Street
North Kingstown, RI 02852
Tel: (401) 295-0044
(401) 268-9885

INDEX OF DRAWINGS

SHEET No.	DESCRIPTION
C-0.0	COVER SHEET
C-1.0	OVERALL EXISTING CONDITIONS PLAN
C-1.1	EXISTING CONDITIONS PLAN - 1
C-1.2	EXISTING CONDITIONS PLAN - 2
C-1.3	EXISTING CONDITIONS PLAN - 3
C-2.0	SOIL EROSION & SEDIMENT CONTROL PLAN
C-3.0	OVERALL SITE IMPROVEMENT PLAN
C-3.1	SITE IMPROVEMENT PLAN - 1
C-3.2	SITE IMPROVEMENT PLAN - 2
C-3.3	SITE IMPROVEMENT PLAN - 3
C-3.4	ALTERNATE TAXIWAY OPTION
C-4.0	POND A DETAILS
C-5.0	UNDERGROUND INFILTRATION SYSTEM B DETAILS
C-6.0	SEFC DETAILS
C-7.0	SITE DETAILS
L-1.0	LANDSCAPE PLAN
L-2.0	LANDSCAPE NOTES & DETAILS
TS-1	ROADWAY TYPICAL SECTIONS
GP-1	ROADWAY PLAN & PROFILE - 1
GP-2	ROADWAY PLAN & PROFILE - 2
GP-3	ROADWAY PLAN & PROFILE - 3
GP-4	ROADWAY PLAN & PROFILE - 4
GP-5	ROADWAY PLAN & PROFILE - 5
BP-1	INFILTRATION BASIN GRADING PLAN
CD-1	CULVERT DETAILS
XC-1	ROADWAY CROSS SECTIONS - 1
XC-2	ROADWAY CROSS SECTIONS - 2
XC-3	ROADWAY CROSS SECTIONS - 3
XC-4	ROADWAY CROSS SECTIONS - 4
XC-5	ROADWAY CROSS SECTIONS - 5
XC-6	ROADWAY CROSS SECTIONS - 6
AV-0.1	AIRFIELD SAFETY AND SECURITY NOTES AND DETAILS
AV-0.11	RUNWAY 16-34 FAA PART 77 SURFACE - PREFERRED
AV-0.11A	RUNWAY 16-34 FAA PART 77 SURFACE - SECONDARY
AV-1.101	AIRFIELD HORIZONTAL CONTROL PLAN - PREFERRED
AV-1.101A	AIRFIELD HORIZONTAL CONTROL PLAN - SECONDARY
AV-2.201	AIRFIELD DEMOLITION PLAN 1 - PREFERRED
AV-2.202	AIRFIELD DEMOLITION PLAN 2 - PREFERRED
AV-2.203	AIRFIELD DEMOLITION PLAN 3 - PREFERRED
AV-2.201A	AIRFIELD DEMOLITION PLAN 1 - SECONDARY
AV-3.301	AIRFIELD PAVING AND GEOMETRY PLAN 1 - PREFERRED
AV-3.302	AIRFIELD PAVING AND GEOMETRY PLAN 2 - PREFERRED
AV-3.303	AIRFIELD PAVING AND GEOMETRY PLAN 3 - PREFERRED
AV-3.301A	AIRFIELD PAVING AND GEOMETRY PLAN 1 - SECONDARY
AV-4.401	AIRFIELD GRADING PLAN 1 - PREFERRED
AV-4.402	AIRFIELD GRADING PLAN 2 - PREFERRED
AV-4.403	AIRFIELD GRADING PLAN 3 - PREFERRED
AV-4.401A	AIRFIELD GRADING PLAN 1 - SECONDARY
AV-4.411	AIRFIELD TAXIWAY CONNECTOR PROFILE - PREFERRED
AV-4.411A	AIRFIELD TAXIWAY CONNECTOR PROFILE - SECONDARY
AV-5.501	AIRFIELD MARKING AND SIGNAGE PLAN 1 - PREFERRED
AV-5.502	AIRFIELD MARKING AND SIGNAGE PLAN 2 - PREFERRED
AV-5.503	AIRFIELD MARKING AND SIGNAGE PLAN 3 - PREFERRED
AV-5.501A	AIRFIELD MARKING AND SIGNAGE PLAN 1 - SECONDARY
AV-6.601	AIRFIELD TYPICAL SECTIONS AND DETAILS - 1
AV-6.602	AIRFIELD TYPICAL SECTIONS AND DETAILS - 2
AV-7.701	AIRFIELD JOINT LAYOUT PLAN





Development Services
 95 Cripe Street
 North Kingstown, RI 02852
 Tel: (401) 295-0044
 Fax: (401) 268-9885



NO.	REVISION	DATE	APP.
1	ORMC RESPONSE TO COMMENTS	6/28/22	

DESIGN BY	D.R.N.	CHECKED BY	XXXX
DRAWN BY	J.W.S.	ENGINEER	
SCALE	AS NOTED	PROJECT NO.	
CONTRACT NO.			
FILE NAME	1794-201-415-PLANNING		

APPROVED

William G. Young P.E.
 ODC Director of Public Works

DATE: March 2022

DRAWING TITLE

QMTC

EXISTING CONDITIONS PLAN - I

Waterfront District
 Quonset Business Park

SHEET NO. **C-1.1** DRAWING NO. **26805**

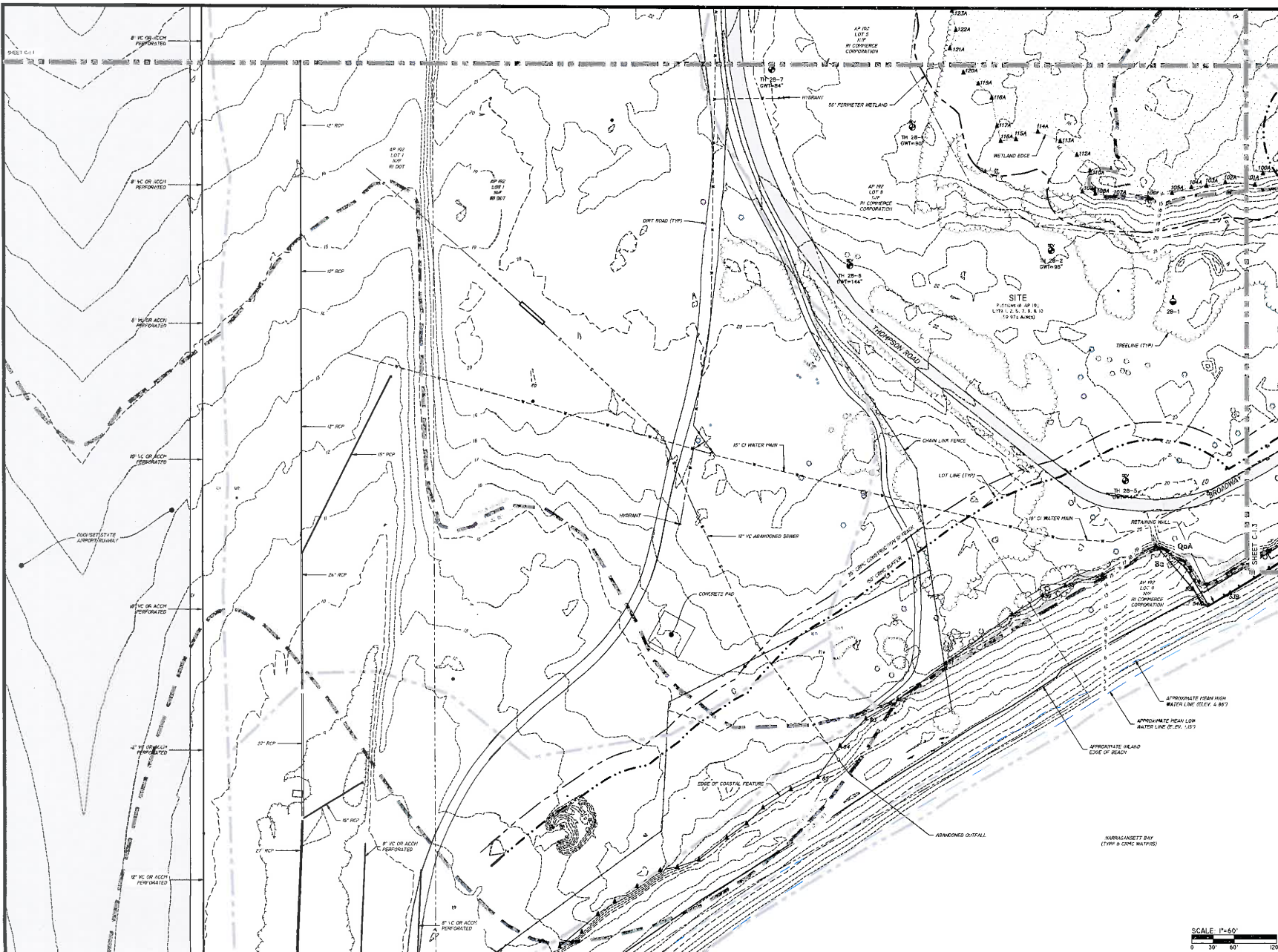
3 OF 55 SHEETS

SHEET C-1.2

8" X 11" GRAPHIC REPRESENTATION

SCALE: 1"=60'

0 30 60 120'



Development Services
 95 Cripe Street
 North Kingstown, RI 02852
 Tel: (401) 295-0044
 Fax: (401) 269-9665

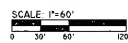


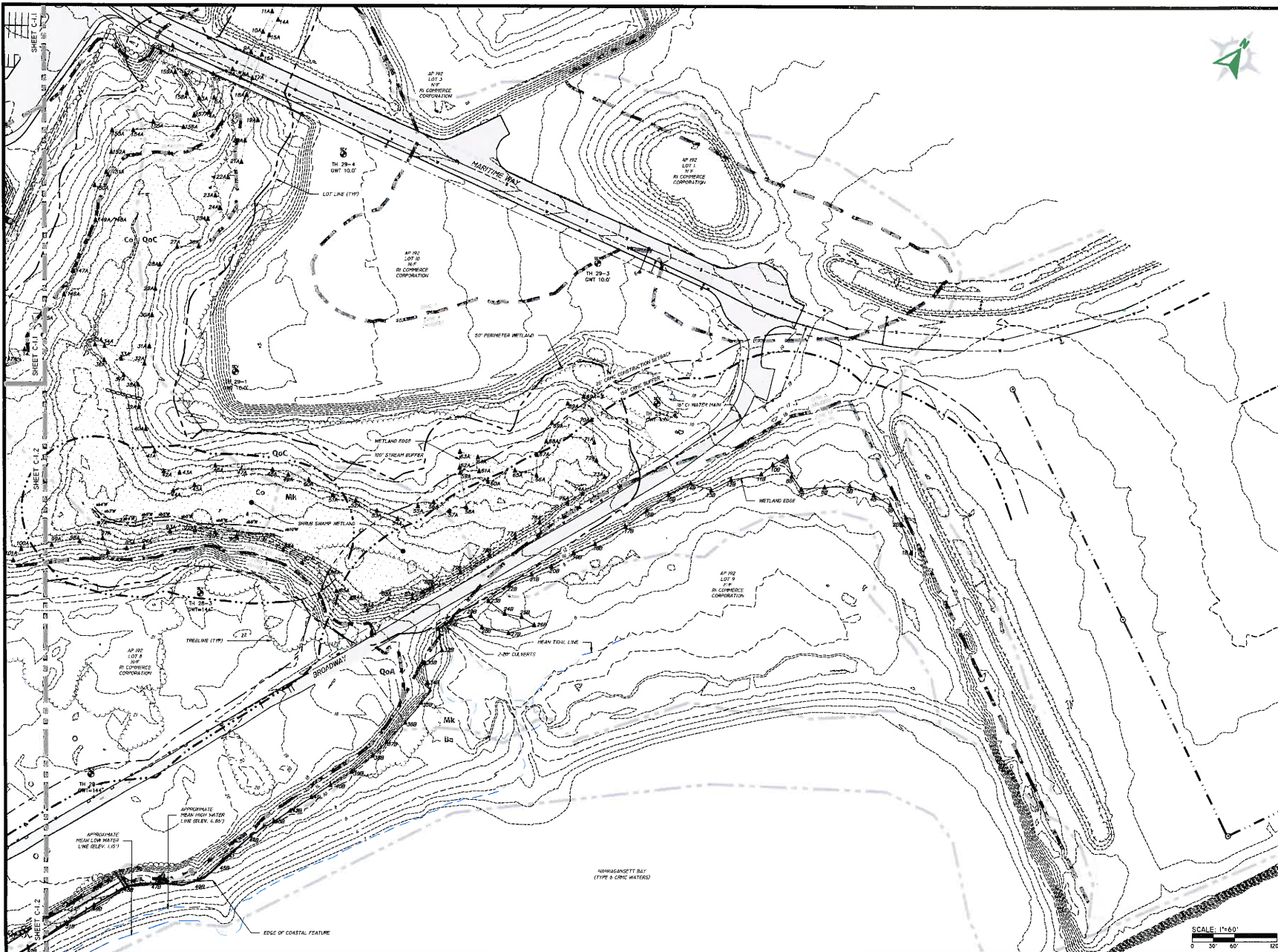
NO.	REVISION	DATE	APP.
1	DRMC RESPONSE TO COMMENTS	6/26/22	

DESIGN BY: D.R.N. CHECKED BY: XXX
 DRAWN BY: J.W.S. ENGINEER
 SCALE: AS NOTED PROJECT NO.
 CONTRACT NO.
 FILE NAME: 1734-001-415-PLANING

APPROVED
 William G. Young P.E.
 ODC Director of Public Works
 DATE: March, 2022

DRAWING TITLE
QMTC
 EXISTING CONDITIONS PLAN - 2
 Waterfront District
Quonset Business Park,
 SHEET NO. DRAWING NO.
C-1.2 26805
 4 OF 55 SHEETS





Development Services
 95 Cripe Street
 North Kingstown, RI 02852
 Tel: (401) 295-0044
 Fax: (401) 268-9885



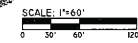
NO.	REVISION	DATE	APP.
1	CRMC RESPONSE TO COMMENTS	6/28/22	

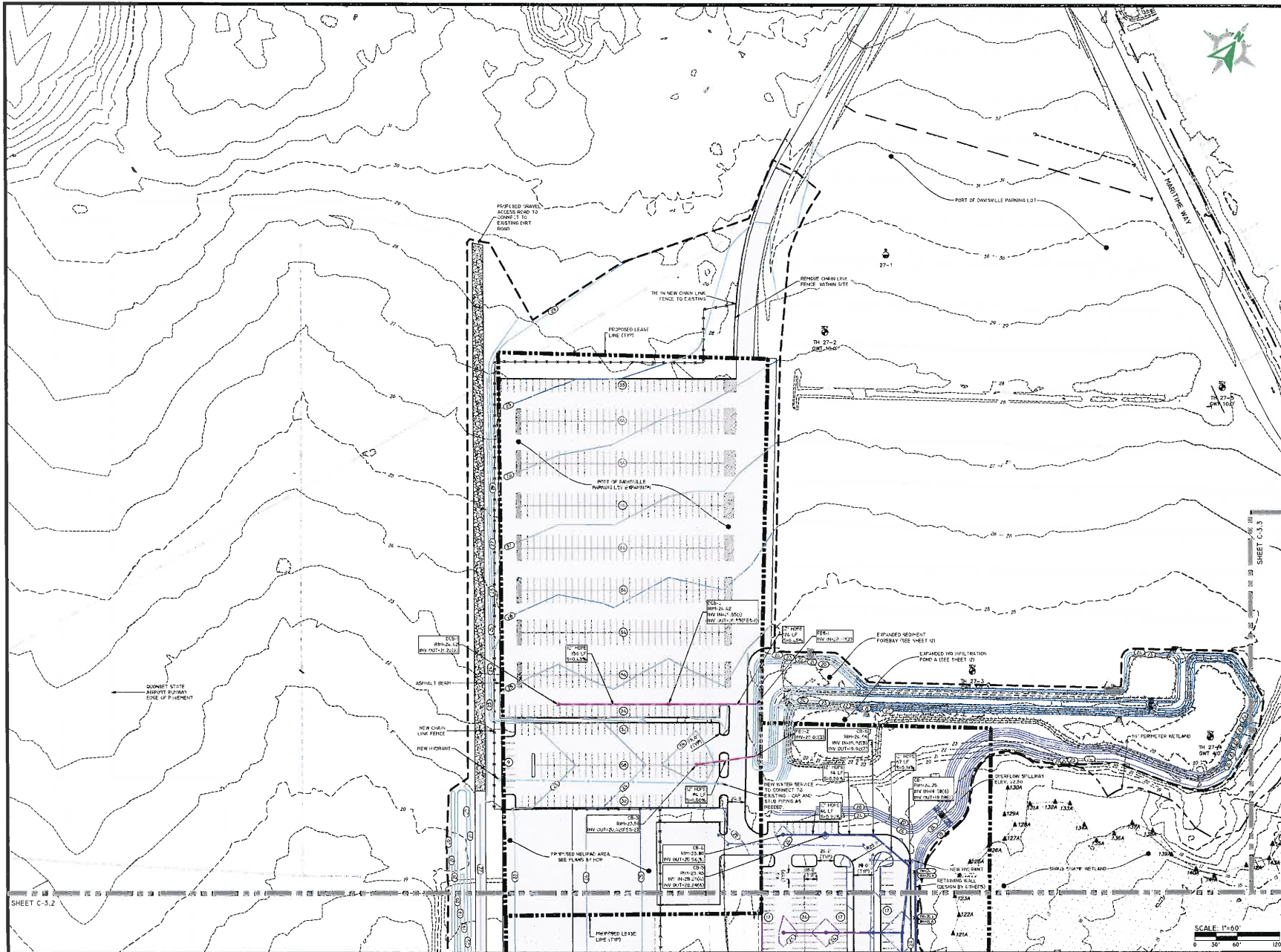
DESIGN BY	D.R.M.	CHECKED BY	XXX
DRAWN BY	J.W.S.	ENGINEER	
SCALE	AS NOTED	PROJECT NO.	
CONTRACT NO.			
FILE NAME	1794-201-118-PLANING		

APPROVED
 William G. Young P.E.
 GDC Director of Public Works
 DATE: March, 2022

DRAWING TITLE
QMTC
 EXISTING CONDITIONS PLAN - 3
 Waterfront District
 Quonset Business Park,

SHEET NO.	DRAWING NO.
C-1.3	26805
5 OF 55 SHEETS	





QUONSET
DEVELOPMENT CORPORATION

Development Services
95 Cripe Street
North Kingstown, RI 02852
Tel: (401) 295-0044
Fax: (401) 266-9885



NO.	REVISION	DATE	APP.
1	ORVC RESPONSE TO COMMENTS	6/28/22	

DESIGN BY: D.R.M. CHECKED BY: XXX
 DRAWN BY: J.W.S. ENGINEER
 SCALE: AS NOTED PROJECT NO.
 CONTRACT NO.
 FILE NAME: 1194-201-10-RUM-000
 APPROVED
 William G. Young P.E.
 ODC Director of Public Works
 DATE: March 2022

QMTC

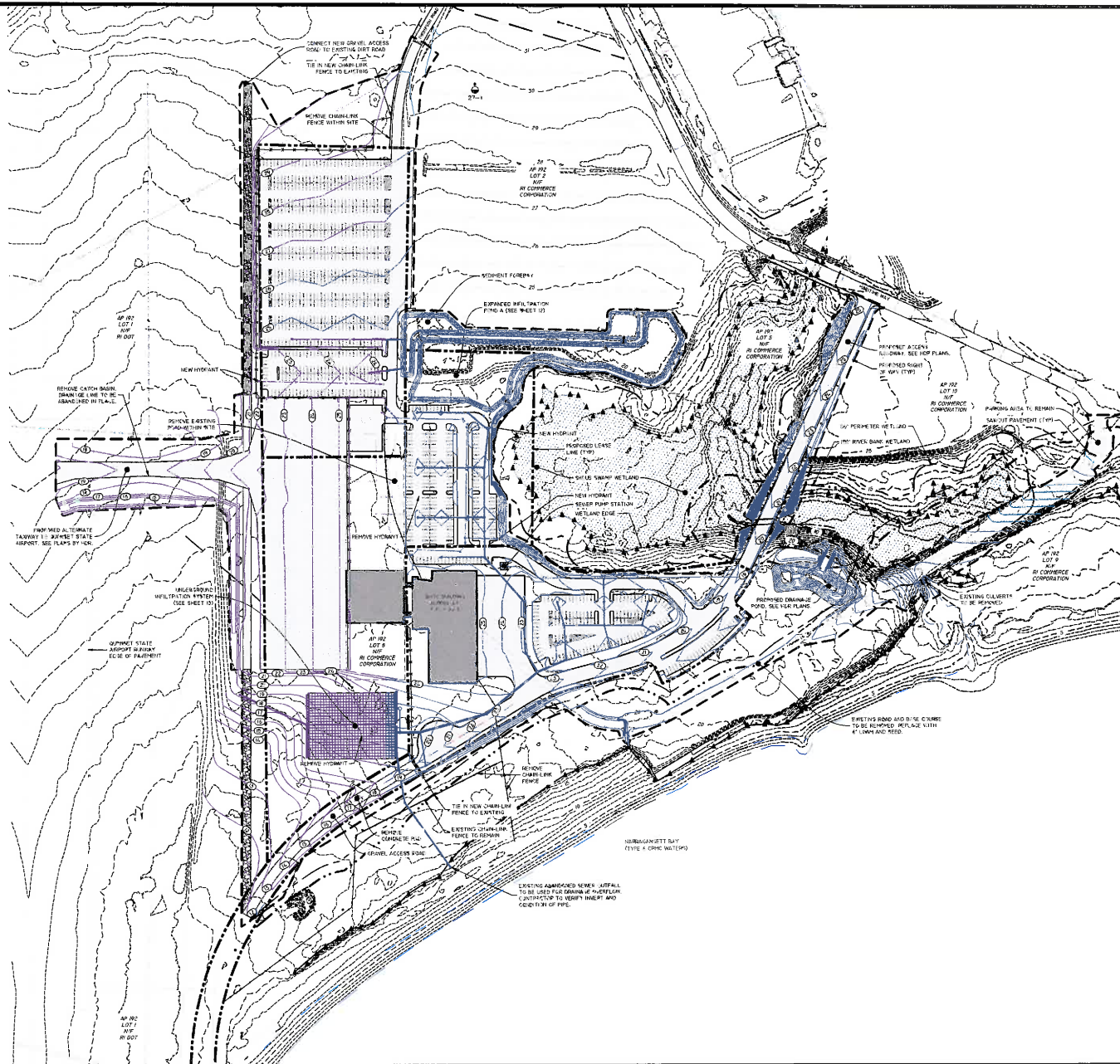
SITE IMPROVEMENT PLAN - I

Waterfront District
Quonset Business Park,

SHEET NO. C-3.1	DRAWING NO. 26805
8 OF 55 SHEETS	

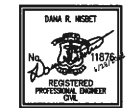
SHEET C-3.2

SCALE: 1"=60'
0' 30' 60' 120'



QUONSET
DEVELOPMENT CORPORATION

Development Services
95 Cripe Street
North Kingstown, RI 02852
Tel: (401) 295-0044
Fax: (401) 268-9885



1	CRMC RESPONSE TO COMMENTS	5/28/22	
NO.	REVISION	DATE	APP.

DESIGN BY: D.R.H. CHECKED BY: XXX
 DRAWN BY: J.W.S. ENGINEER
 SCALE: AS NOTED PROJECT NO.
 CONTRACT NO.
 FILE NAME: 1714-201-A13-PLAN06

APPROVED

 William G. Young P.E.
 GDC Director of Public Works
 DATE: March 2022

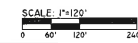
DRAWING TITLE

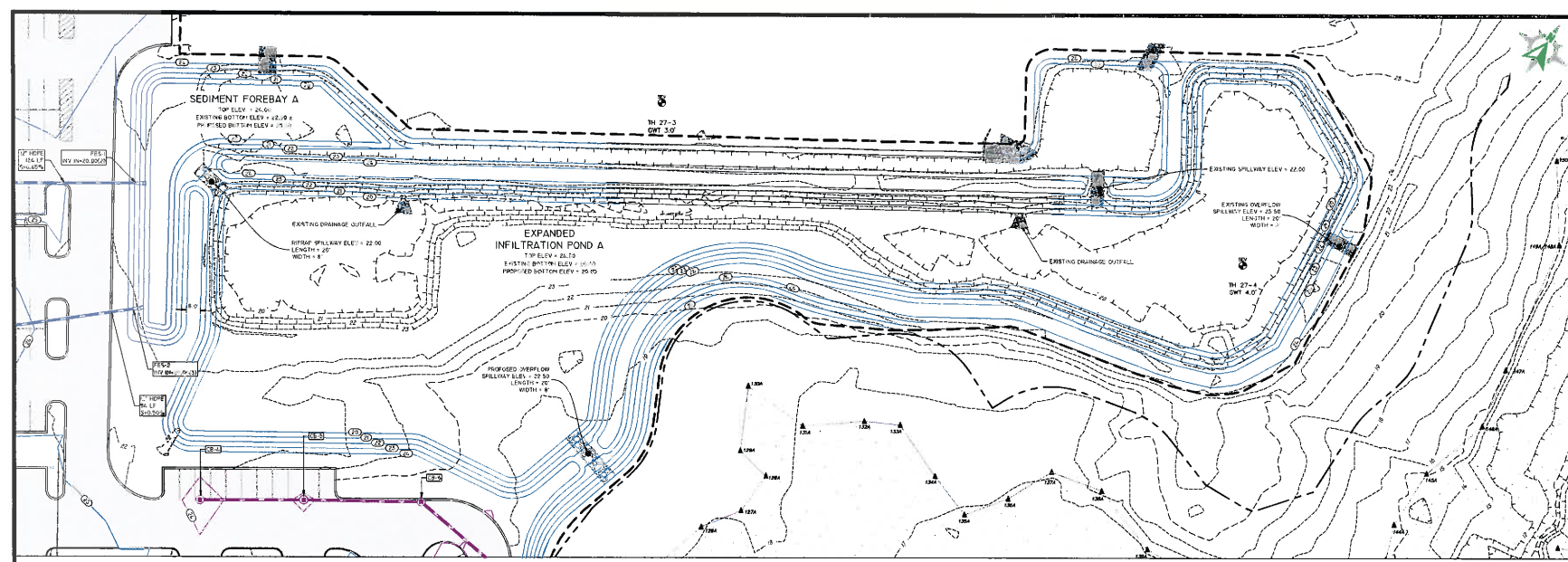
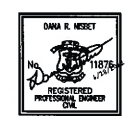
QMTC

ALTERNATE TAXIWAY OPTION

**Waterfront District
Quonset Business Park,**

SHEET NO.	DRAWING NO.
C-3.4	26805
11 OF 55 SHEETS	





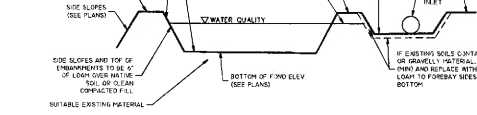
POND COMPLEX A

SCALE: 1"=30'
0 15' 30'

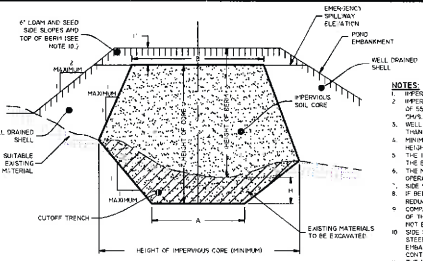
DESCRIPTION	#/A
TOP OF BERM ELEVATION	24.10
100 YEAR STORM ELEVATION	22.94
1 YEAR STORM ELEVATION	21.44
1 YEAR STORM ELEVATION	20.51
100 YEAR ELEVATION	28.00
BOTTOM OF POND ELEVATION	22.00
SEASONAL HIGH GWT ELEVATION	18.00
SEASONAL LOW GWT ELEVATION	16.00

BOTTOM & SIDE SLOPES OF POND TO BE SEEDED WITH NEW ENGLAND COASTAL PLANTS (OR APPROVED EQUALS)

NOTES:
1. THE SLOPE OF INFILTRATION POND TO BE STAGED OUT AND NOT USED AS A TEMPORARY SEDIMENT BASIN DURING CONSTRUCTION (NO CONSTRUCTION TRAFFIC ALLOWED WITHIN FILTER LINTS)



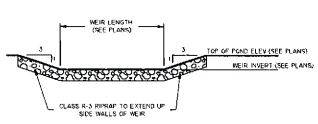
WQ Infiltration Pond BMP System
NOT TO SCALE



BERM HEIGHT (FT)	TOP WIDTH OF CORE (5 FT)
0-5.5	9.2
6-9.9	12
9-13	18
13.1-16	24
16.1-19.7	30

- NOTES:**
- INTERVIOUS SOIL CORE TO BE PROVIDED FOR ALL POND EMBANKMENTS.
 - INTERVIOUS SOIL CORE TO BE SUBSTITUTED BY A MATERIAL WITH A MINIMUM OF 15% PASSING THE #20 SIEVE AND A MAXIMUM PERMEABILITY OF 0.0005 CM/S.
 - WELL DRAINED SHELL TO BE COMPACTED OF GRAVEL AND/OR SAND WITH LESS THAN 1% FINES PASSING THE #20 SIEVE.
 - MINIMUM DEPTH OF CUTOFF TRENCH (H) SHALL BE 3/4 OF THE TOTAL BERM HEIGHT.
 - THE INTERVIOUS CORE AT A MINIMUM SHALL EXTEND UP BOTH ABUTMENTS TO THE ELEVATION OF SPILLWAY ELEVATION.
 - THE MINIMUM BOTTOM WIDTH (W) SHALL BE 5'-0" AND WIDE ENOUGH TO PERMIT OPERATION OF CONSTRUCTION EQUIPMENT.
 - SIDE SLOPES OF THE TRENCH SHALL BE NO STEEPER THAN 1:1.
 - IF BERMWORK IS ENCASED BELOW THE SOIL THE CUT OFF TRENCH CAN BE REDUCED TO 1/2 BERM.
 - CONSTRUCTION ALLOWANCES FOR THE SHELL AND INTERVIOUS CORE TO BE 10% OF THE MINIMUM PROVISION FOR BOTH SLOPES. ALL FILL TO BE PLACED BY LIFT'S NOT EXCEEDING 12".
 - SIDE SLOPE 2% POND EMBANKMENT TO BE 2:1 MINIMUM IF SIDE SLOPES ARE STEEPER THAN 3:1. SLOPE PROTECTION MUST BE UTILIZED ON POND EMBANKMENT. THIS INCLUDES, BUT NOT LIMITED TO, SPRAY AND STABILIZATION CONTROL MATS.
 - THE INTERVIOUS CORE SHALL BE KEPT FREE FROM STANDING WATER DURING THE BACKFILL OPERATION.
 - ALL EMBANKMENT INSTALLATIONS TO BE SUPERVISED BY A GEOTECHNICAL ENGINEER.
 - ANY PROPOSED DEVIATIONS FROM THIS DETAIL MUST BE DESIGNED BY A GEOTECHNICAL ENGINEER AND SUBMITTED TO THE SITE ENGINEER (AND ANY AGENCIES REQUIRED) FOR REVIEW PRIOR TO CONSTRUCTION.

POND EARTHEN EMBANKMENT
NOT TO SCALE



OVERFLOW WEIR
NOT TO SCALE

NO	REVISION	DATE	APP
1	ORMC RESPONSE TO COMMENTS	6/28/22	

DESIGN BY	D.R.N.	CHECKED BY	XXXX
DRAWN BY	J.W.S.	ENGINEER	
SCALE	AS NOTED	PROJECT NO.	

CONTRACT NO.
FILE NAME 1724-201-010-PUM-10

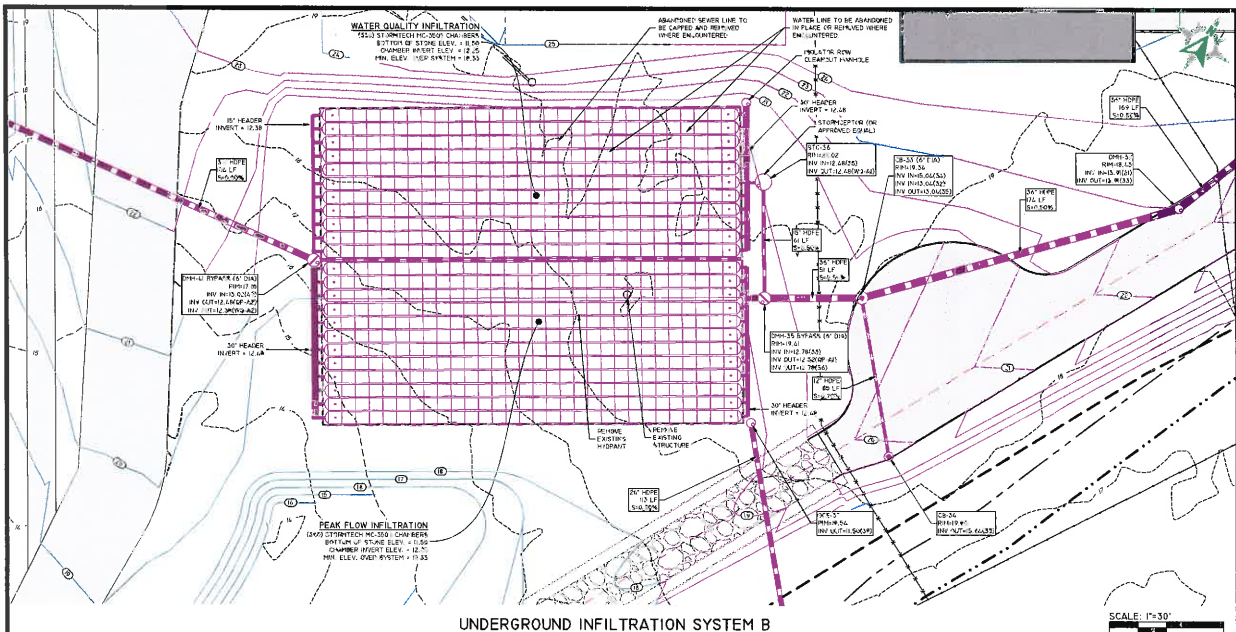
APPROVED
William G. Young P.E.
ODC Director of Public Works
DATE - March 2022

DRAWING TITLE
QMTC
Pond A DETAILS

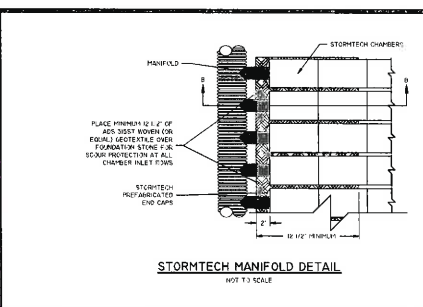
Waterfront District
Quonset Business Park,

SHEET NO. C-4.0	DRAWING NO. 26805
---------------------------	-----------------------------

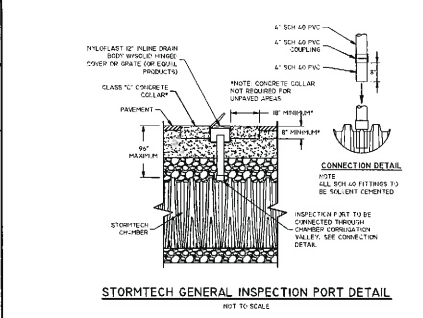
12 OF 55 SHEETS



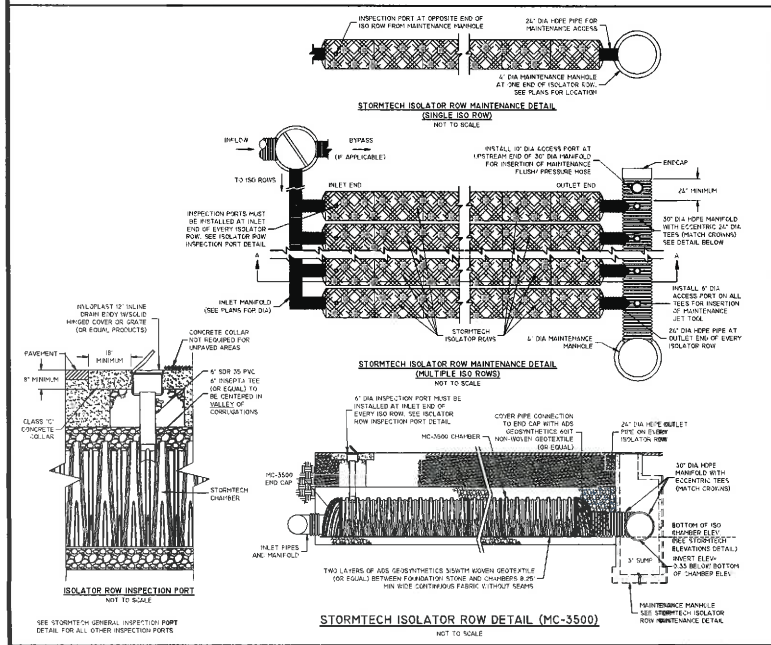
UNDERGROUND INFILTRATION SYSTEM B



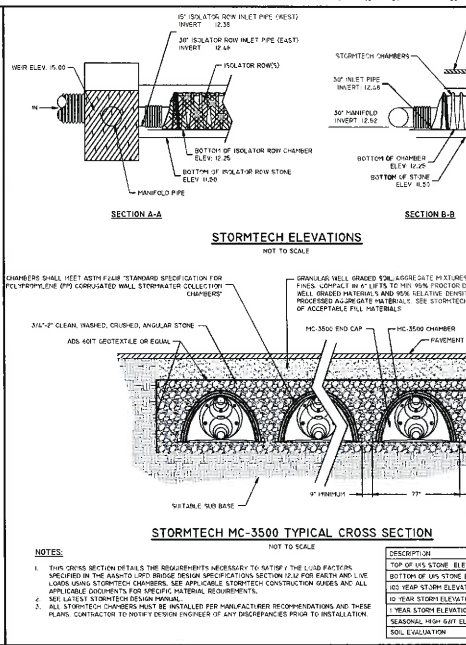
STORMTECH MANIFOLD DETAIL



STORMTECH GENERAL INSPECTION PORT DETAIL



STORMTECH ISOLATOR ROW DETAIL (MC-3500)

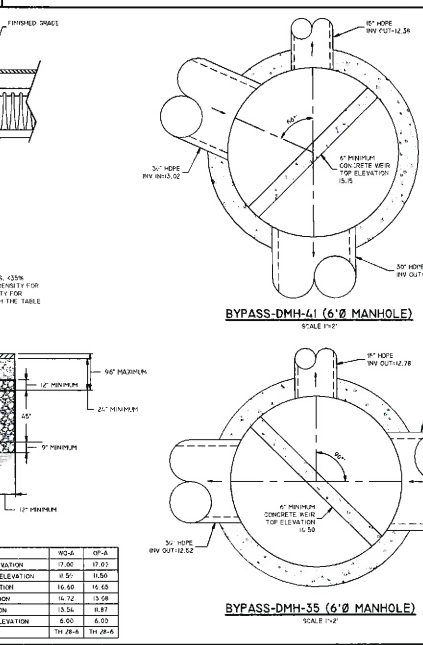


STORMTECH MC-3500 TYPICAL CROSS SECTION

NOTES:

- THIS CROSS SECTION DETAILS THE REQUIREMENTS NECESSARY TO SATISFY THE LOAD FACTOR SPECIFIED IN THE APPLICABLE BRIDGE DESIGN SPECIFICATIONS SECTION 12.1 FOR BRIDGE AND ALL LOWER GRADES. STORMTECH CHAMBERS, SEE APPLICABLE STORMTECH CONSTRUCTION TRADES AND ALL LOWER GRADES CONSTRUCTION FOR SPECIFIC MATERIAL REQUIREMENTS.
- SEE LATEST STORMTECH DESIGN MANUAL.
- ALL STORMTECH CHAMBERS MUST BE INSTALLED PER MANUFACTURER RECOMMENDATIONS AND THESE PLANS. CONTRACTOR TO NOTIFY DESIGN ENGINEER OF ANY DISCREPANCY PRIOR TO INSTALLATION.

DESCRIPTION	NO. & OF-A
TOP OF L.S. STONE ELEVATION	17.00 17.07
BOTTOM OF L.S. STONE ELEVATION	0.51 1.58
100 YEAR STORM ELEVATION	16.60 16.62
10 YEAR STORM ELEVATION	16.72 16.58
1 YEAR STORM ELEVATION	15.54 16.87
SEASONING HIGH WATER ELEVATION	6.00 6.07
SOIL EVALUATION	TH 28-4 TH 28-6



BYPASS-DMH-41 (6" Ø MANHOLE)

BYPASS-DMH-35 (6" Ø MANHOLE)



Development Services
95 Crisp Street
North Kingstown, RI 02852
Tel: (401) 295-0044
Fax: (401) 294-9885



NO.	REVISION	DATE	APP.
1	CRMC RESPONSE TO COMMENTS	5/28/22	

DESIGN BY	D.R.N.	CHECKED BY	XXX
DRAWN BY	J.W.S.	ENGINEER	
SCALE	AS NOTED	PROJECT NO.	
CONTRACT NO.			
FILE NAME	1991-001-A18-PLAN.DWG		

APPROVED
William G. Young P.E.
Code Director of Public Works
DATE: March 2022

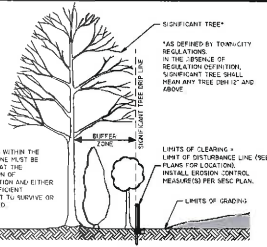
QMTC

UNDERGROUND INFILTRATION SYSTEM B DETAILS

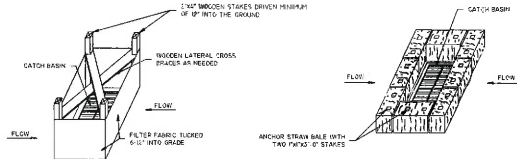
Waterfront District
Quonset Business Park

SHEET NO. **C-5.0** DRAWING NO. **26805**

13 OF 55 SHEETS



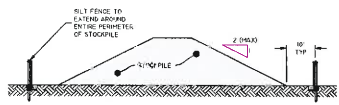
LIMIT OF DISTURBANCE AT VEGETATION
NOT TO SCALE



SILT FENCE INSTALLATION FOR CATCH BASINS AT LOW POINTS **STRAW BALE FILTER INSTALLATION FOR CATCH BASINS AT LOW POINTS**

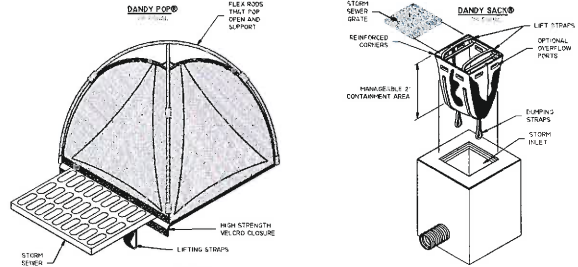
- NOTES:**
1. STORMWATER INLETS WHICH DO NOT DISCHARGE TO SEDIMENT TRAPS OR BASINS MUST BE PROTECTED UNTIL THE TRIBUTARY ARE STABILIZED.
 2. SEDIMENT MUST BE REMOVED FROM INLET PROTECTION AFTER EACH STORM.
 3. REFER TO LONG TERM MAINTENANCE NOTES AND OPERATION & MAINTENANCE PLAN FOR THINKING OF BLOCKING AND SCHEDULES OF SEDIMENT CONTROL ELEMENTS.

CATCH BASIN EROSION CONTROL
NOT TO SCALE

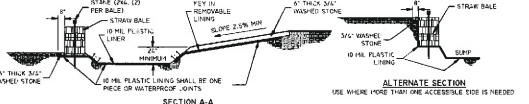
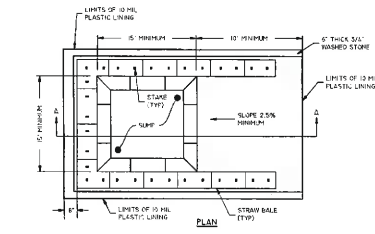


- NOTES:**
1. ALL STOCKPILES MUST BE INSTALLED AND MAINTAINED IN ACCORDANCE WITH SECTION 3 'STOCKPILE AND STOCKPILE AREA MANAGEMENT' OF THE BROWNSVILLE AND SODASIDE SEDIMENT CONTROL HANDBOOK (CURRENT EDITION).
 2. COVER ALL STOCKPILES WITH HIGH STOCKPILES.
 3. SALT STOCKPILES THAT ARE NOT TO BE USED WITHIN 30 DAYS MUST BE REEDED AND RELOADED IMMEDIATELY AFTER EXHAUSTION OF THE RESERVE WITH SALT PERMISSIBLE WITH THE SOIL TYPE.
 4. STOCKPILE AND SALT FENCE MUST BE INSPECTED AT LEAST ONCE PER WEEK AND AFTER RAIN EVENTS IN EXCESS OF 1" OF RAINFALL. REPAIR PERMEABLE SALT FENCE (AND STOCKPILE COVER) AS NEEDED AS NEEDED TO KEEP THEM FUNCTIONING PROPERLY.
 5. SEDIMENT TRAPPED BY SALT FENCES MUST BE REMOVED AND PROPERLY DISPOSED OF WHENEVER SIGNIFICANT ACCUMULATION OCCURS.

STOCKPILE PROTECTION
NOT TO SCALE



INLET SEDIMENT CONTROL DEVICES
NOT TO SCALE



WASHOUT SIGN

CONCRETE WASHOUT AREA
NOT TO SCALE

- NOTES:**
1. PTH IS SPECIFICALLY DESIGNED, CURED AND IMPERVIOUS CONTAINMENT TO PREVENT CONTACT BETWEEN CONCRETE WASH AND STORMWATER.
 2. WASH WATER SHALL NOT BE ALLOWED TO FLOW TO SURFACE WATER.
 3. FACILITY MUST HOLD SUFFICIENT VOLUME TO CONTAIN CONCRETE WASTE WITH A MINIMUM FREEBOARD OF 12\"/>
 - 4. FACILITY SHALL NOT BE FILLED BEYOND 95% CAPACITY UNLESS A NEW FACILITY IS CONSTRUCTED.
 - 5. SAWCUT PORTLAND CEMENT CONCRETE, RESIDUE FROM SAWCUT AND GRINDING, TO BE DISPOSED OF IN THE PIT.
 - 6. CONCRETE WASHOUTS SHALL BE LOCATED 2 MINIMUM OF 100' FROM DRAINAGE WEYS, INLETS, AND SURFACE WATERS.
 - 7. MANUFACTURED CONCRETE WASHOUT DEVICES MAY BE USED IF REMOVED FROM THE SITE WHEN 95% FULL CAPACITY.



Development Services
95 Cripe Street
North Kingstown, RI 02852
Tel: (401) 295-0044
Fax: (401) 268-9885



NO.	REVISION	DATE	APP.

1. CIVIC RESPONSE TO COMMENTS 6/26/22

DESIGN BY	D.R.M.	CHECKED BY	XXX
DRAWN BY	J.W.S.	ENGINEER	
SCALE	AS NOTED	PROJECT NO.	

CONTRACT NO.
FILE NAME: 1724-001-A19-PLANING

APPROVED

William G. Young P.E.
ODC Director of Public Works
DATE: March, 2022

DRAWING TITLE

QMTC

SESC DETAILS

Waterfront District
Quonset Business Park,

SHEET NO. C-6.0 DRAWING NO. 26805
14 OF 55 SHEETS

