



ECOTONES, INC.
ENVIRONMENTAL CONSULTANTS

EAST GREENWICH ~ WAKEFIELD
PO BOX 1131, E. GREENWICH, RI 02818
PHONE 401-256-5199
FAX 401-256-5191



October 24, 2022
Project 22048

James Boyd, General Manager
New York Yacht Club Harbour Court
5 Halidon Avenue
Newport, RI 02840

RE: Submerged Aquatic Vegetation Evaluation Letter of Findings
New York Yacht Club Harbor Court, Newport Harbor, Newport, RI

Mr. Boyd:

Ecotones, Inc. completed the Submerged Aquatic Vegetation (SAV) assessment on September 10, 2022. The evaluation was performed to identify areas of SAV in accordance the State of Rhode Island Coastal Resources Management Council (CRMC) Coastal Resources Management Program (CRMP). No SAV was observed.

A total of 43,870 square feet (1.0 acre) of the bottom was evaluated directly and with video recordings. GPS coordinates were recorded as a text overlay on the video and separately using SOFTWEL (P) Ltd. SW Maps™ software and a Trimble DSM-232 DGPS under manufacturer-specified conditions for sub-meter accuracy. Water clarity during the assessment was excellent. Underwater visibility exceeded 10 feet throughout the study area (greater in shallower areas). See Figure 1 for the extents of the study area.

No SAV was observed. Near shore the bottom was predominately sand (Photo 1). Algae and shell cover increased with depth and distance offshore (Photo 2). In some areas the sand was covered/mixed with shell hash (Photo 3). The deepest areas were characterized by dense shell cover over the sand (Photo 4). Although a variety of species made up the shell cover, the majority were Slipper Shells (*Crepidula fornicata*). Overall, the majority of the area was predominately algae-covered sand (Photo 5 and 6). Oyster Thief (*Codium fragile*) was the predominate algae species. The study areas and photo locations are depicted in Figure 1.

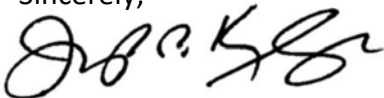
All SAV evaluations are subject to review and verification by CRMC and/or other agencies. The presence, absence, and distribution of SAV can vary from season to season. Accordingly, the results are limited to the observations on and valid for, the specific date of the evaluation only.

It is advised that the determination be verified by CRMC as part of a coastal Preliminary Determination (PD) application or other correspondence prior to extensive investment in the property or site design.

Ecotones, Inc. offers no assurances or guarantees in regard to, the ability to, or likelihood of, receiving necessary approvals for any proposed project layout or design.

Thank you for the opportunity to assist you with your project. Please contact us if you have any questions or need additional information.

Sincerely,



Ecotones, Inc.

Joe Klinger, PWS, Principal Environmental Scientist

jklinger@ecotonesinc.com

22061_SAV_LOF_NYYC_NewportHarborNewportRI.docx



PHOTO 1.

Sand with little algae and shell cover typical of nearshore areas.
¼-meter quadrat.

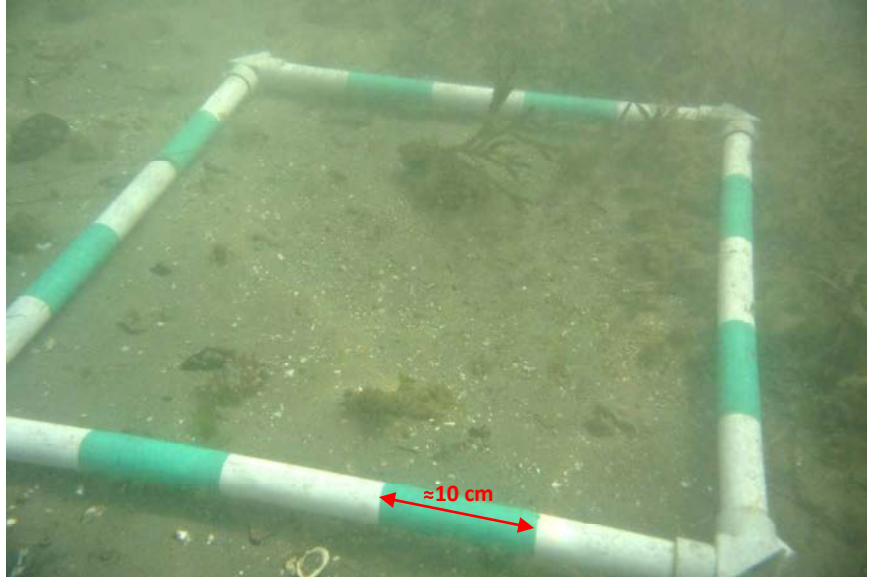


PHOTO 2.

Sand with increasing shell and algae with depth and distance offshore.



PHOTO 3.

Sand and shell hash.



RECEIVED
OCTOBER 24, 2022
COASTAL RESOURCES
MANAGEMENT COUNCIL

PHOTO 4.

Shell-covered sand typical of deepest areas.



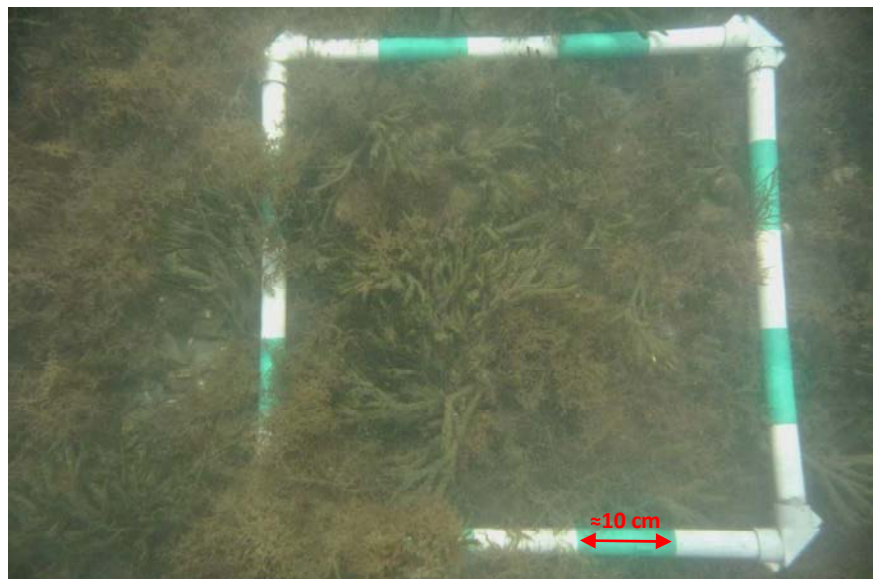
PHOTO 5.

Abundant algae-covered sand typical of most of the study area. Predominately Oyster Thief (*Codium fragile*).



PHOTO 6.

Abundant algae-covered sand typical of most of the study area.

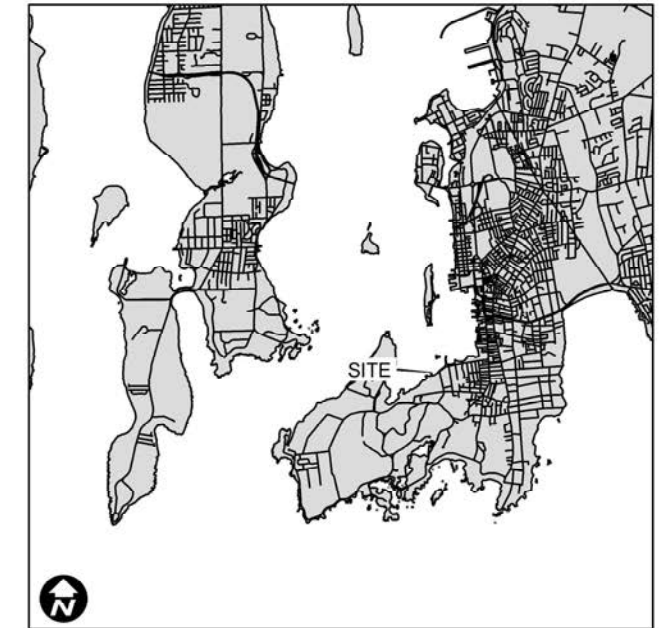




COMPILED FROM:

- 1) Direct observations and GPS-overlay video recordings recorded 9/10/2022 with SOFTWEL (P) Ltd. SW Maps software and a Trimble DSM-232 GPS under manufacturer-specified conditions for sub-meter performance.
- 2) RIGIS 2022 April 2022 Digital Aerial Photographs. Statewide digital true color georeferenced aerial photographs of Rhode Island. Capture date range: April 2- 23, 2022. <https://www.rigis.org/pages/2022-april-imagery>. Environmental Data Center, University of Rhode Island, Kingston, RI
- 3) RIGIS, 2021. RI E911 Road Centerlines; e911Roads22r1. Rhode Island Geographic Information System (RIGIS) Data Distribution System, URL: <https://www.rigis.org>, Environmental Data Center, University of Rhode Island, Kingston, RI
- 4) RIGIS, 2016. Municipal Boundaries (1997); muni97d. RI Geographic Information System (RIGIS) Data Distribution System, URL: <http://www.rigis.org>, Environmental Data Center, University of RI, Kingston, RI.

See October 24, 2022 Letter of Findings for additional details and limitations.



LOCATION MAP (1:12,000)

This map is not the product of a Professional Land Survey. It was created by Ecotones, Inc. for general reference, informational, planning and guidance use, and is not a legally authoritative source as to location of natural or manmade features. Proper interpretation of this map may require the assistance of appropriate professional services. Ecotones, Inc. makes no warranty, express or implied, related to the spatial accuracy, reliability, completeness, or currentness of this map.

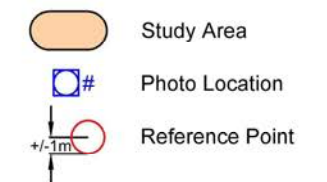


FIGURE 1. Study Area Sketch

New York Yacht Club
Newport Harbor
Newport, RI

Project 22061 October 24, 2022



ECOTONES INC.
ENVIRONMENTAL CONSULTANTS
East Greenwich - Wakefield
Phone 401-256-5199
www.ecotonesinc.com

