



RIGIS

OCT 19 2023

SITE LOCATION M

SCALE: 1"=2,000'



8 BLACKSTONE VALLEY PLACE
LINCOLN, RI 02865
(401) 334-4100

10 LINCOLN ROAD, SUITE 210
FOXBORO, MA 02035
(508) 543-1755

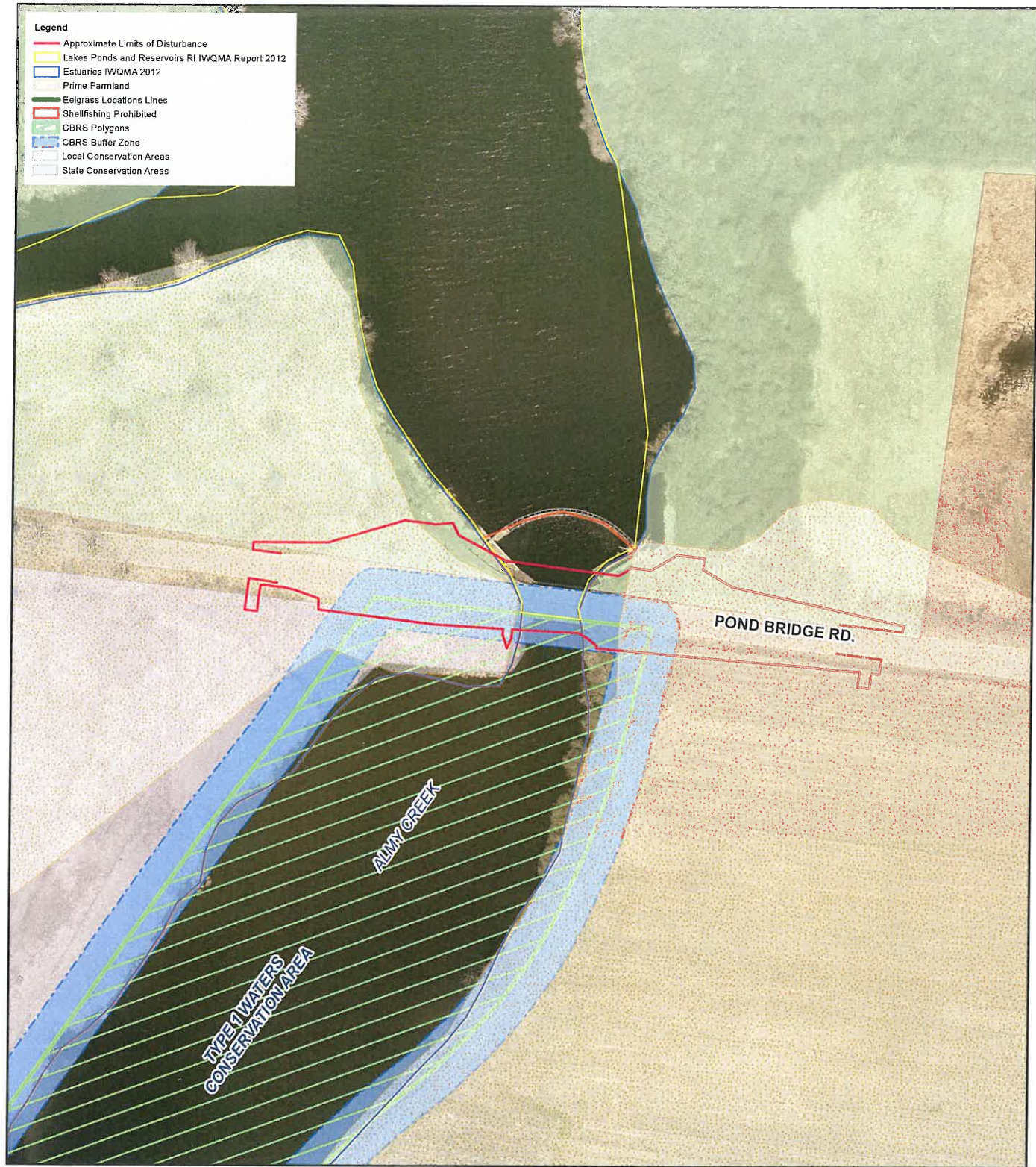
PARE PROJECT No. 20085.01

AUGUST 2023

FIGURE 1

NONQUIT POND BRIDGE NO. 292
TIVERTON, RI

- Legend**
- Approximate Limits of Disturbance
 - Lakes Ponds and Reservoirs RI IWQMA Report 2012
 - Estuaries IWQMA 2012
 - Prime Farmland
 - Eelgrass Locations Lines
 - Shellfishing Prohibited
 - CBRS Polygons
 - CBRS Buffer Zone
 - Local Conservation Areas
 - State Conservation Areas



RIGIS

ANNOTATED AERIAL PHOTOGRAPH

SCALE: 1" = 200'



OCT 19 2023

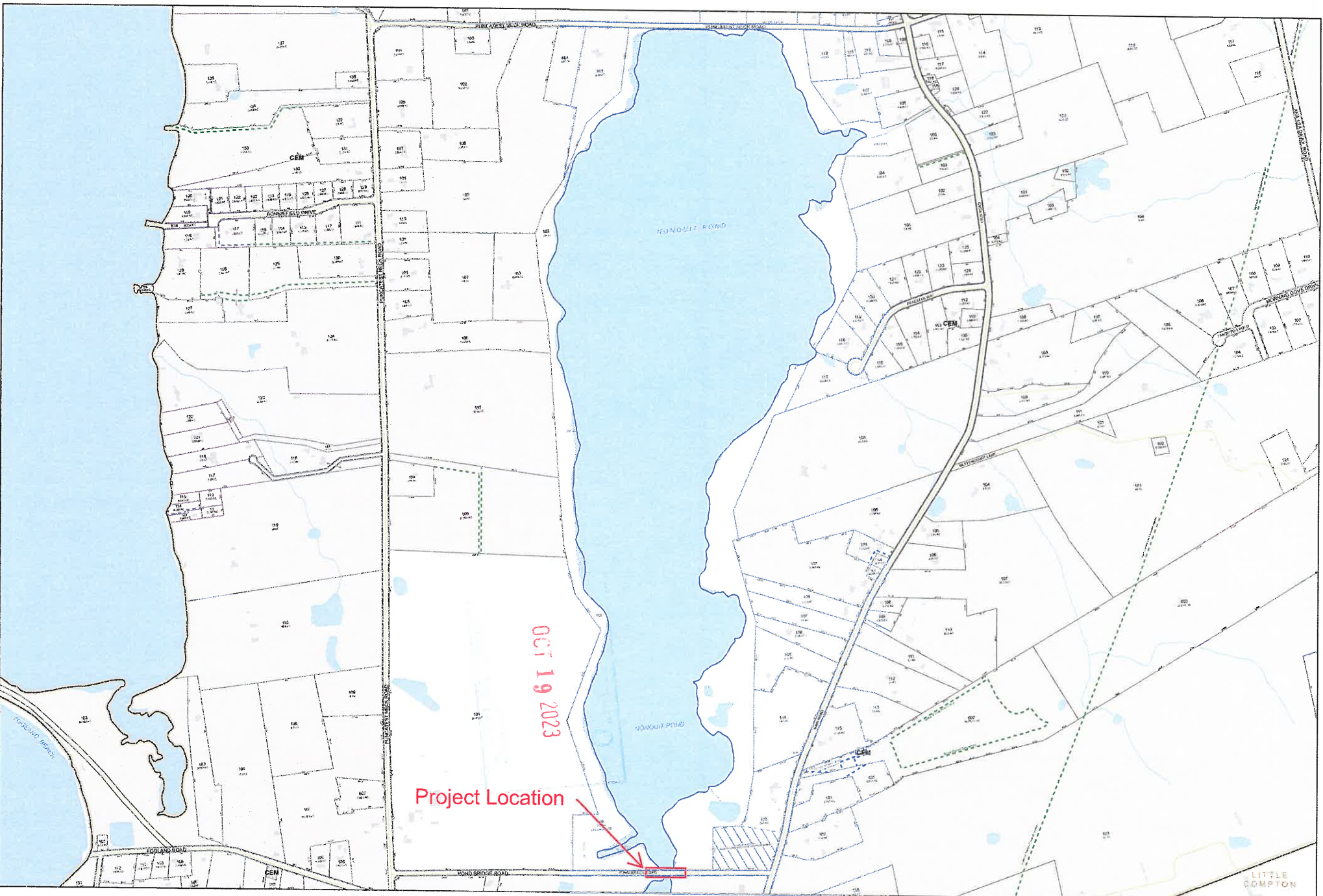
8 BLACKSTONE VALLEY PLACE
LINCOLN, RI 02865
(401) 334-4100

10 LINCOLN ROAD, SUITE 210
FOXBORO, MA 02035
(508) 543-1755

FIGURE 2

NONQUIT POND BRIDGE NO. 292
TIVERTON, RI





MainStreetMaps
 by MainStreetGIS, LLC
 www.mainstreetgis.com
 Online mapping and property information available at:
 www.mainstreetmaps.com/tiverton

This map is for assessment purposes only and is not valid for legal description or conveyance.
 Parcel mapping is current through 12/31/2020
 Publication date: 5/12/2021
 Data sources: RIGIS, E911, MassGIS, Town of Tiverton

0 125 250 500 Feet
 1 inch = 450 feet
 (when printed at 24" x 18")



Assessor's Plat Map
TOWN OF TIVERTON
 Rhode Island
 Prepared by MainStreetGIS, LLC

- Parcel Boundary
- Water Feature
- Private Right-of-Way
- Right-of-Way
- Town Boundary
- Easement
- Streets (E911/RIGIS 2017)
- Stream
- Water Body
- Building
- Cemetery
- Development Rights
- Condo / Other Parcel
- Tower



Plat
808
 5/12/2021 Sheet 120 of 142

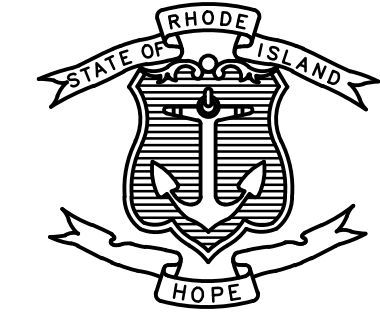
FIGURE 6.2

| FED. ROAD DIV. NO. | STATE | FEDERAL AID PROJECT NO. | FISCAL YEAR | SHEET NO. | TOTAL SHEETS |
|--------------------|-------|-------------------------|-------------|-----------|--------------|
| 1 | RI | - | 2024 | 1 | 24 |

INDEX OF DRAWINGS

| SHEET No. | DESCRIPTION |
|-----------|---|
| 1 | COVER SHEET |
| 2 | STANDARD PLAN SYMBOLS & STANDARD LEGEND |
| 3 | STANDARD NOTES - 1 |
| 4 | STANDARD NOTES - 2 |
| 5 | JOB SPECIFIC PLAN SYMBOLS LEGEND & NOTES |
| 6 | TYPICAL SECTIONS |
| 7 | GENERAL PLAN |
| 8 | ROADWAY PROFILE |
| 9 | DRAINAGE AND UTILITY PLAN |
| 10 | GRADE AND LOCATION PLAN |
| 11 | VEGETATION IMPACT AND LANDSCAPE PLAN |
| 12 | DETAILS No. 1 |
| 13 - 15 | BRIDGE NOTES - 1 - 3 |
| 16 | BRIDGE DEMOLITION PLAN |
| 17 | BRIDGE DEMOLITION AND REPAIR ELEVATIONS |
| 18 | CONCRETE REPAIR NOTES AND DETAILS |
| 19 | BRIDGE GENERAL PLAN |
| 20 | BRIDGE SECTIONS |
| 21 | PILE LAYOUT PLAN |
| 22 | TYPICAL ABUTMENT PLAN AND ELEVATION |
| 23, 24 | WINGWALL PLAN AND ELEVATION No. 1 AND No. 2 |

STATE OF RHODE ISLAND



DEPARTMENT OF TRANSPORTATION

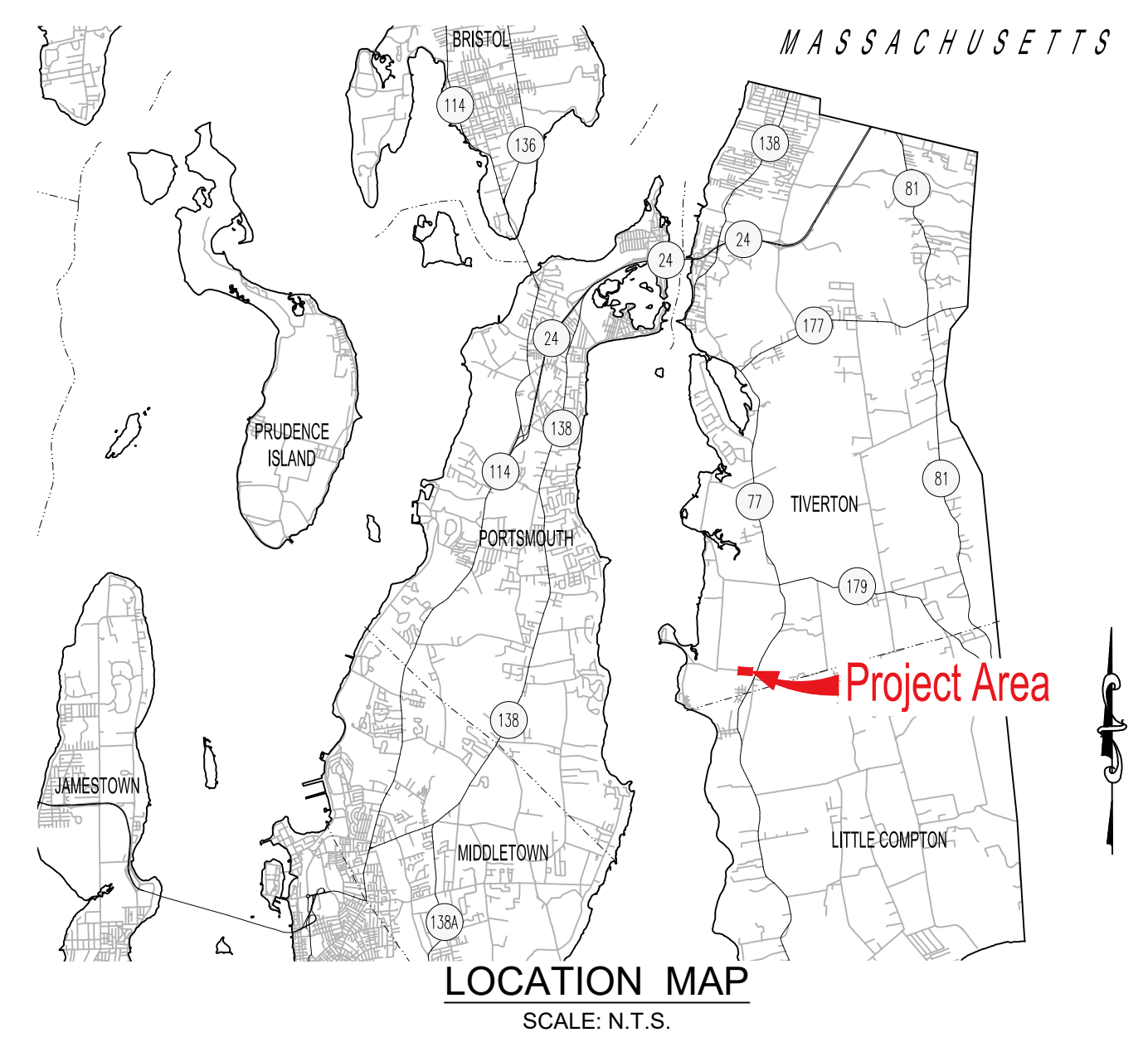
PLAN OF PROPOSED

NONQUIT POND BRIDGE NO. 292
POND BRIDGE ROAD

TIVERTON, RHODE ISLAND
NEWPORT COUNTY

R.I. CONTRACT NO. - F.A. PROJECT NO. -

0.05 MILES

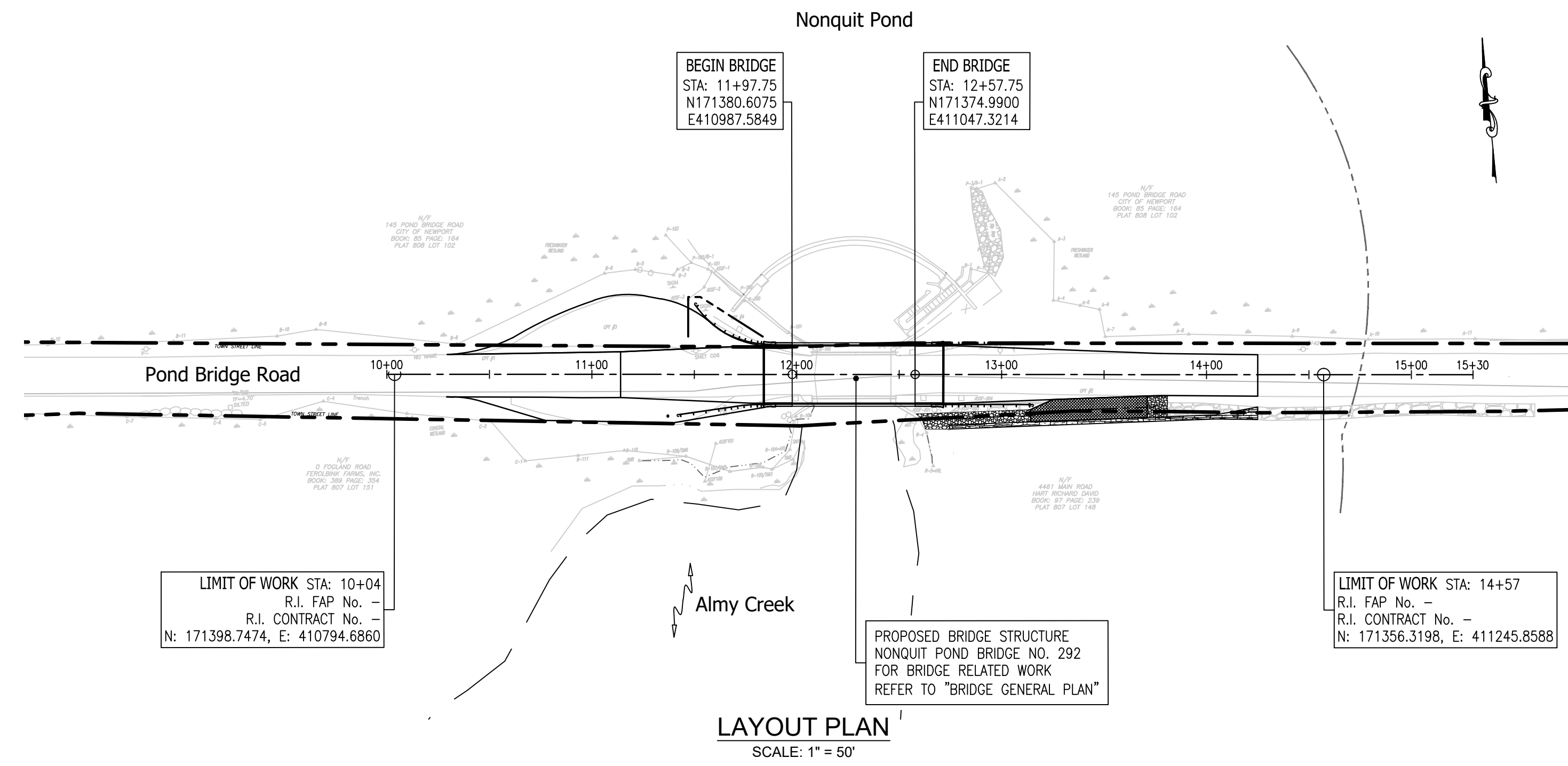


DESIGN DESIGNATION

AADT (2021) = 1,000 VEH
 AADT (2041) = 1,100 VEH
 DHV (2041) = 99 VEH
 D = 55/45
 T = 1%
 DESIGN SPEED = 30 MPH

PROPOSED PAVEMENT STRUCTURE

POND BRIDGE ROAD:
 FULL DEPTH CONSTRUCTION:
 2" MODIFIED CLASS 12.5 HMA
 5" CLASS 19.0 HMA (PLACED IN TWO 2.5" LIFTS)
 12" GRAVEL BORROW SUBBASE COURSE
 ASPHALT EMULSION TACK COAT BETWEEN HMA LAYERS
 BRIDGE DECK:
 3" MIN. MODIFIED CLASS 9.5 HMA FOR BRIDGE DECKS
 (PLACED IN TWO 1.5" MIN. LIFTS, DEPTH VARIES)
 ASPHALT EMULSION TACK COAT BETWEEN HMA LAYERS

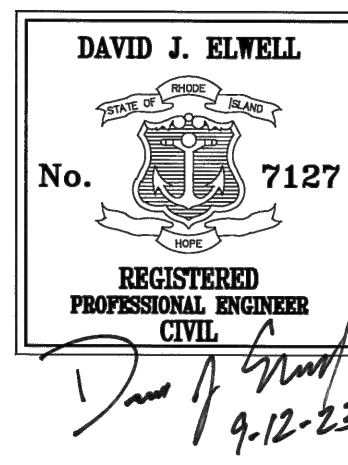


LAYOUT PLAN
SCALE: 1" = 50'

SCALES OF DRAWINGS
PLANS: 1 INCH = 20 FEET

BASE OF LEVELS
VERTICAL DATUM USED: NAVD-88
HORIZONTAL DATUM: RHODE ISLAND STATE PLANE, NAD-83 (2007) (2002.00)

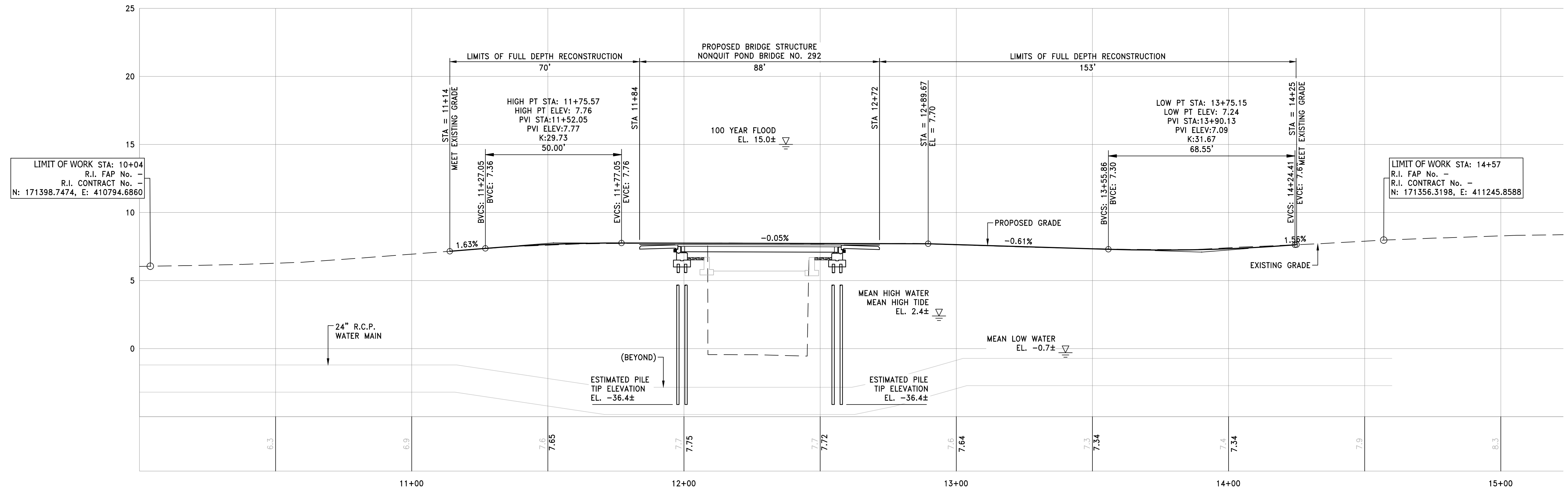
R.I. STANDARD SPECIFICATIONS AND STANDARD DETAILS
 SPECIFICATIONS TO GOVERN THIS PROJECT ARE THE R.I. STANDARD SPECIFICATIONS FOR ROAD AND BRIDGE CONSTRUCTION, AMENDED MARCH 2018, WITH ALL REVISIONS AND SUPPLEMENTS AND THE STATE AND FEDERAL SPECIAL PROVISIONS INCLUDED IN THE CONTRACT DOCUMENTS. STANDARD DETAILS FOR THIS PROJECT ARE R.I. STANDARD DETAILS, 1998 EDITION, WITH ALL REVISIONS.



PERMIT SUBMISSION
SEPTEMBER 2023

Contract Number -
 Number of Sheet 1
 Total Sheets 24

| R.I. DEPARTMENT OF TRANSPORTATION | |
|--|------|
| APPROVED | |
| ADMINISTRATOR, PROJECT MANAGEMENT | DATE |
| APPROVED | |
| CHIEF ENGINEER OF INFRASTRUCTURE | DATE |
| APPROVED | |
| DIRECTOR | DATE |
| DEPARTMENT OF TRANSPORTATION FEDERAL HIGHWAY ADMINISTRATION | |
| APPROVED | |
| DIVISION ADMINISTRATOR | DATE |



LIMIT OF WORK STA: 10+04
 R.I. FAP No. -
 R.I. CONTRACT No. -
 N: 171398.7474, E: 410794.6860

LIMIT OF WORK STA: 14+57
 R.I. FAP No. -
 R.I. CONTRACT No. -
 N: 171356.3198, E: 411245.8588



RHODE ISLAND
 DEPARTMENT OF TRANSPORTATION

DESIGNED BY:
 CHECKED BY:
 DATE: AUGUST 2023
 SHEET: 8
 OF: 24

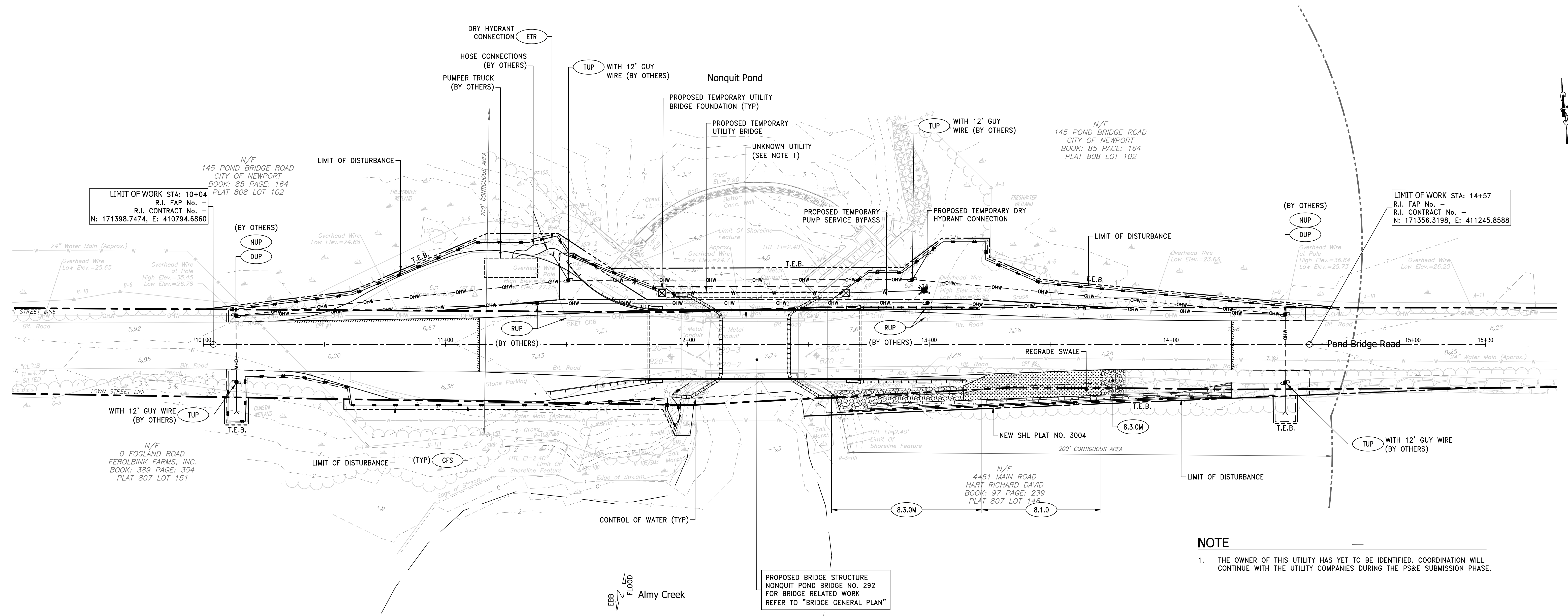
| | | | | |
|-------------|------|-----------|-----|------|
| Vertical: | 0 | 2' | 4' | 8' |
| Horizontal: | 0 | 10' | 20' | 40' |
| REVISIONS | | REVISIONS | | |
| NO. | DATE | BY | NO. | DATE |
| | | | | |
| | | | | |

REPLACEMENT OF NONQUIT POND BRIDGE NO. 292

TIVERTON RHODE ISLAND

ROADWAY PROFILE

Z:\Users\jdo\OneDrive\Documents\2023\2023\20230823_10_19_2023\20230823_10_19_2023.dwg



NOTE
 1. THE OWNER OF THIS UTILITY HAS YET TO BE IDENTIFIED. COORDINATION WILL CONTINUE WITH THE UTILITY COMPANIES DURING THE PS&E SUBMISSION PHASE.

PROPOSED BRIDGE STRUCTURE
 NONQUIT POND BRIDGE NO. 292
 FOR BRIDGE RELATED WORK
 REFER TO "BRIDGE GENERAL PLAN"



RHODE ISLAND
 DEPARTMENT OF TRANSPORTATION

DESIGNED BY:
 CHECKED BY:
 DATE: AUGUST 2023
 SHEET: 9
 OF: 24

Scale: 1"=20'

| 0 | | 10' | | 20' | | 40' | |
|-----------|------|-----------|-----|-----------|----|-----------|------|
| REVISIONS | | REVISIONS | | REVISIONS | | REVISIONS | |
| NO. | DATE | BY | NO. | DATE | BY | NO. | DATE |
| | | | | | | | |

REPLACEMENT OF NONQUIT POND BRIDGE NO. 292
 TIVERTON
 RHODE ISLAND
 DRAINAGE AND UTILITY

