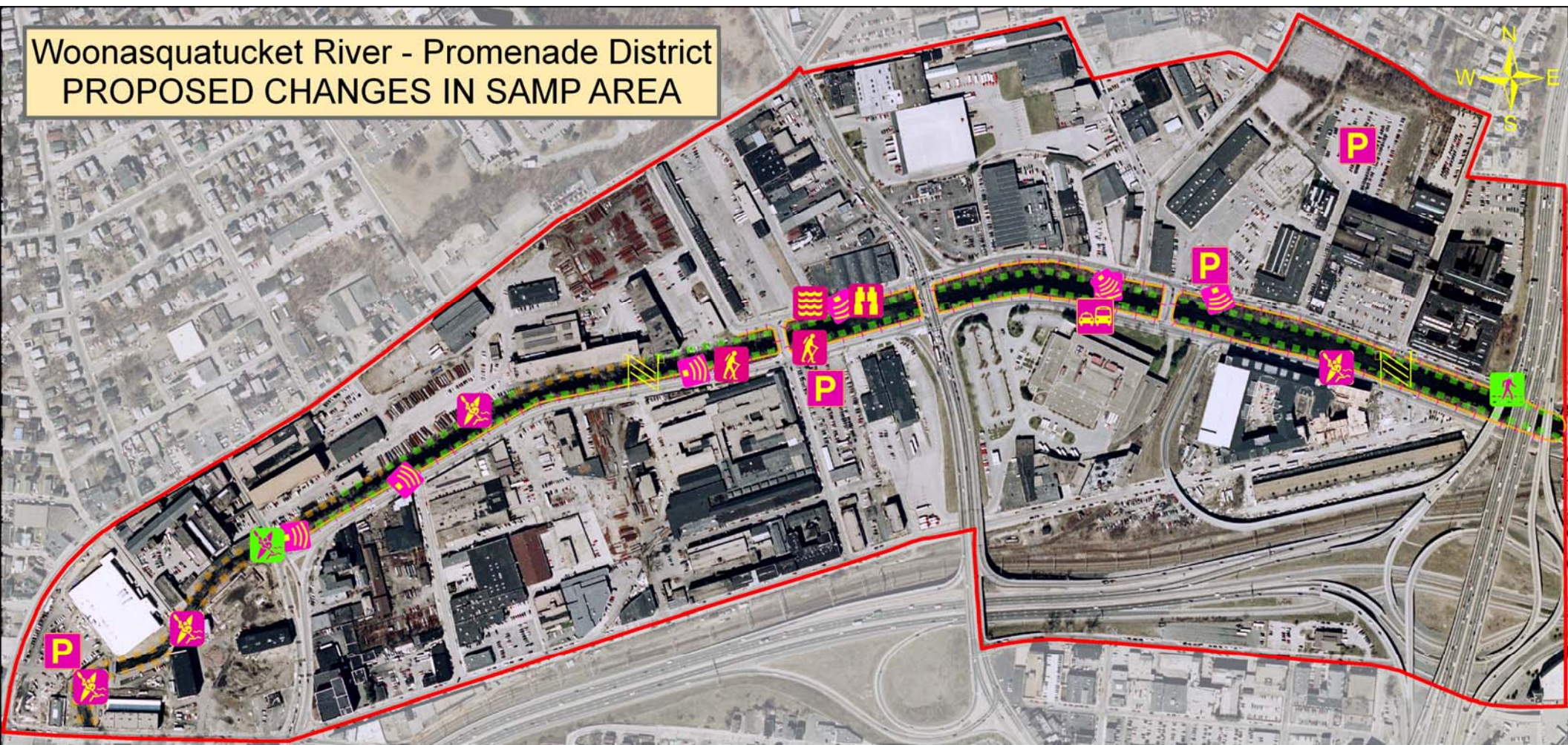


# Woonasquatucket River - Promenade District PROPOSED CHANGES IN SAMP AREA



0 1,000 2,000 Feet

## Proposed Improvements

Daylight Pleasant Valley Stream

Education Platform

Ensure Bridge Clearance for Paddlers

New Designated Public Parking \*

New Kayak Launch Site

New Pedestrian Bridge

New Walking Trails

Safer pedestrian access to Providence Place

Calm vehicular traffic/Renovate for landscaping

Replace Railings

Create Views From Bench Areas

SAMP Boundary

Structural Shoreline

Vegetated Bank

\* Indicates two or three spots reserved for public parking or as necessary to meet the requirements of the Urban Coastal Greenways Policy.



Map By Austin Becker and Eivy Monroy  
Data provided by RIGIS and CRC  
and public input from Woonasquatucket workshops  
02/2008