

STATE OF RHODE ISLAND
COASTAL RESOURCES MANAGEMENT COUNCIL
Oliver Stedman Government Center
4808 Tower Hill Road; Suite 3, Wakefield, RI 02879-1900

In accordance with and pursuant to the provisions of the "Administrative Procedures Act" (Section 42-35-3 of the General Laws of Rhode Island) and the Rule and Regulations of the Coastal Resources Management Council, notice is hereby given of the intention of the Coastal Resources Management Council to change the management plans, policies, procedures and regulations of the agency regarding planning and management of the coastal resources of the State relative to Chapter 46-23 of the State of Rhode Island.

The following change is proposed:

**RI Coastal Resources Management Program:
- Greenwich Bay Special Area Management Plan**

Revise water types within the Greenwich Bay SAMP area (figures attached) as follows:

1. Chepiwanoxet Point – change from Type 2 to Type 1 the tidal areas bounded by the lots 11, 29, 83, and 94 in plat 221 to a distance of 500 feet offshore.
2. Greenwich Cove – relocate the existing line delineating Type 5 waters southward to coincide with a line drawn from the tip of Long Point northwesterly to the opposite shoreline and intersecting the most northeasterly corner boundary of the Marina Perimeter Limit for Norton’s Marina authorized under CRMC Assent 2002-05-005. The corner boundary coordinate is 343158E, 212929N. The existing Type 2 waters west of Chepiwanoxet Point shall extend southward until meeting the amended line delineating Type 5 waters.
3. Baker’s Creek barrier spit - change from Type 2 to Type 1 the tidal area bounded by lot 201 in plat 367 to a distance of 500 feet off shore.
4. Baker’s Creek headland area - change from Type 2 to Type 1 the tidal area bounded by lots 114 and 116 in plat 367 to a distance of 500 feet off shore.

Revise the Greenwich Bay SAMP Greenwich Cove quahog resource preserve area as follows:

Modify the southern boundary line of the quahog resource preserve (Section 390.2A.1.b) to be coincident with the proposed amended line for Type 5 waters, as described in the aforementioned proposed water type revisions above and as follows.

390.2 Open waters
390.2A Regulations
Policy

1. The following areas are designated as quahog resource preserves:
 - a. Mary’s Creek and the area delineated by the northern and southern edge of the Mary’s Creek salt marsh due east to the federal navigation channel
 - b. The area delineated by the shoreline and lines from Long Point ~~due~~ westerly and coincident with Type 5 waters and the southernmost point of Chepiwanoxet Point due south to Long Point.

The purpose of this proposed change is to revise water types in implementation of the Greenwich Bay SAMP, and to make the Greenwich Cove quahog resource preserve boundary consistent with water type boundaries.

CRMC Public Hearing Notice
Program Changes
February 6, 2009; Page Two

The Council has complied with the requirements of R.I. Gen. Laws Section 42-35-3 by considering alternative approaches to the proposed regulation(s) and has determined that there is/are no alternative approach(es) that would be as effective and less burdensome. The Council has also determined that the proposed regulation(s) do(es) not overlap or duplicate any other state regulation. The Council has complied with the requirements of R.I. Gen. Laws Section 42-35-3.3 by submitting copies of the proposed regulation(s) to the Governor's Office and the Economic Development Corporation (EDC).

Parties interested in or concerned with the above proposed changes are invited to **submit written comments** by March 10, 2009. All such comments should be directed to Grover J. Fugate, Executive Director, at the above address.

A public hearing has been scheduled for these proposed changes to be held in Conference Room A, Administration Building, One Capitol Hill, Providence, RI, on Tuesday, April 14, 2009, at 6:00 p.m.

Copies of the proposed regulations are also available from the Coastal Resources Management Council offices and its website – www.crmc.ri.gov.

Individuals requesting interpreter services for the hearing impaired must notify the Council office at 783-3370, 72 hours in advance of the hearing date.

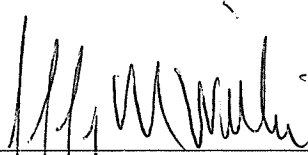
Further information may be obtained by contacting the Coastal Resources Management Council offices at 783-3370.

NOTICE

These changes are considered to be routine program changes to the federally approved Coastal Resources Management Program of Rhode Island. The CRMC will be requesting that the federal Office of Ocean and Coastal Resources Management concur with this determination when it seeks inclusion of such in the federally approved program. Persons who disagree that these are routine modifications to the federally approved program may submit such written comments within three weeks of the date of the issuance of this notice to:

Allison Castellan
Coastal Management Specialist
NOAA/NOS/OCRM
Coastal Programs Division
1305 East-West Highway, SSMC4
Silver Spring, MD 20910

Signed this 6th day of February, 2009.

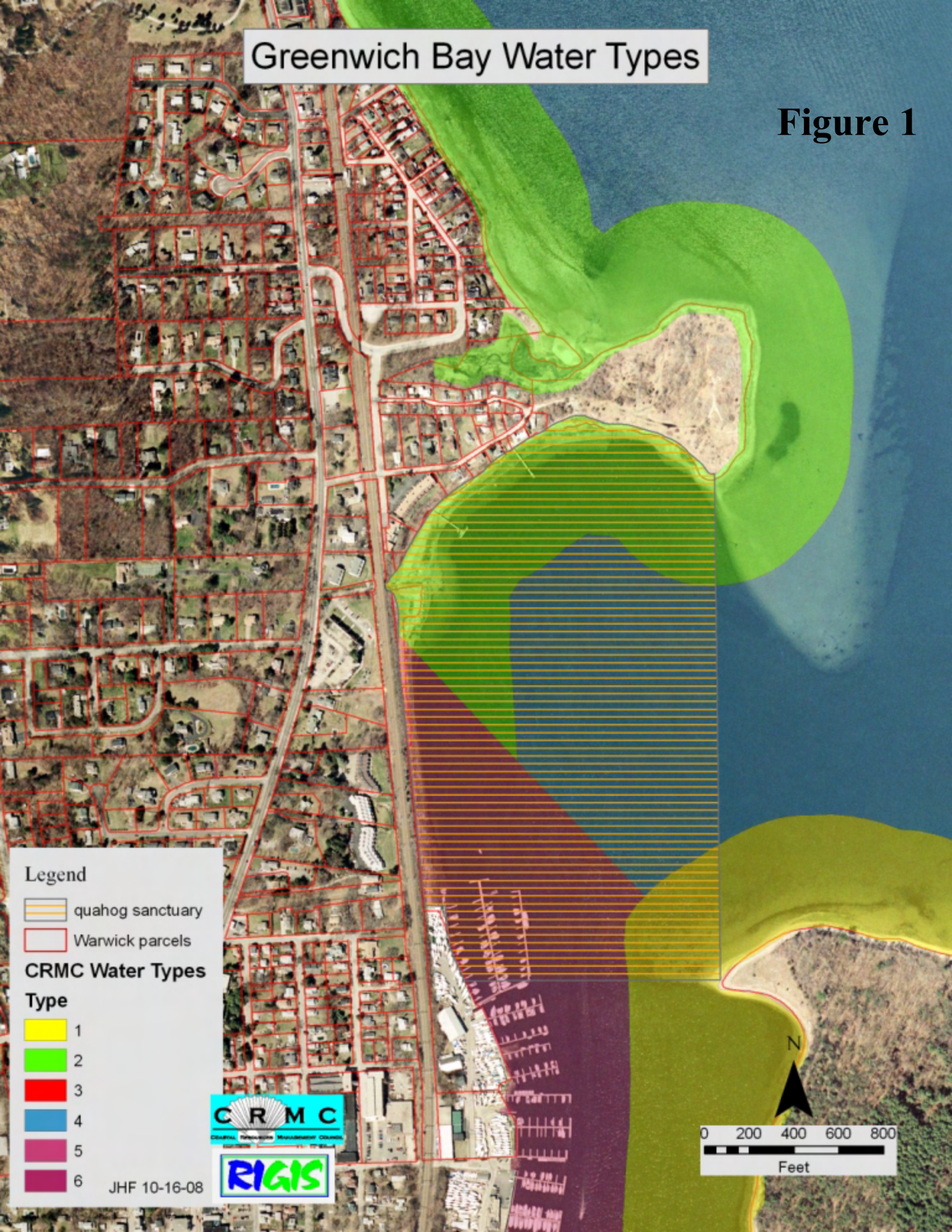


Jeffrey M. Willis, Deputy Director
Coastal Resources Management Council

/lam

Greenwich Bay Water Types

Figure 1



Legend

- quahog sanctuary
- Warwic parcels

CRMC Water Types

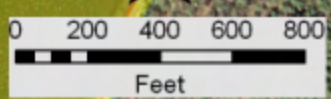
Type

- 1
- 2
- 3
- 4
- 5
- 6

JHF 10-16-08

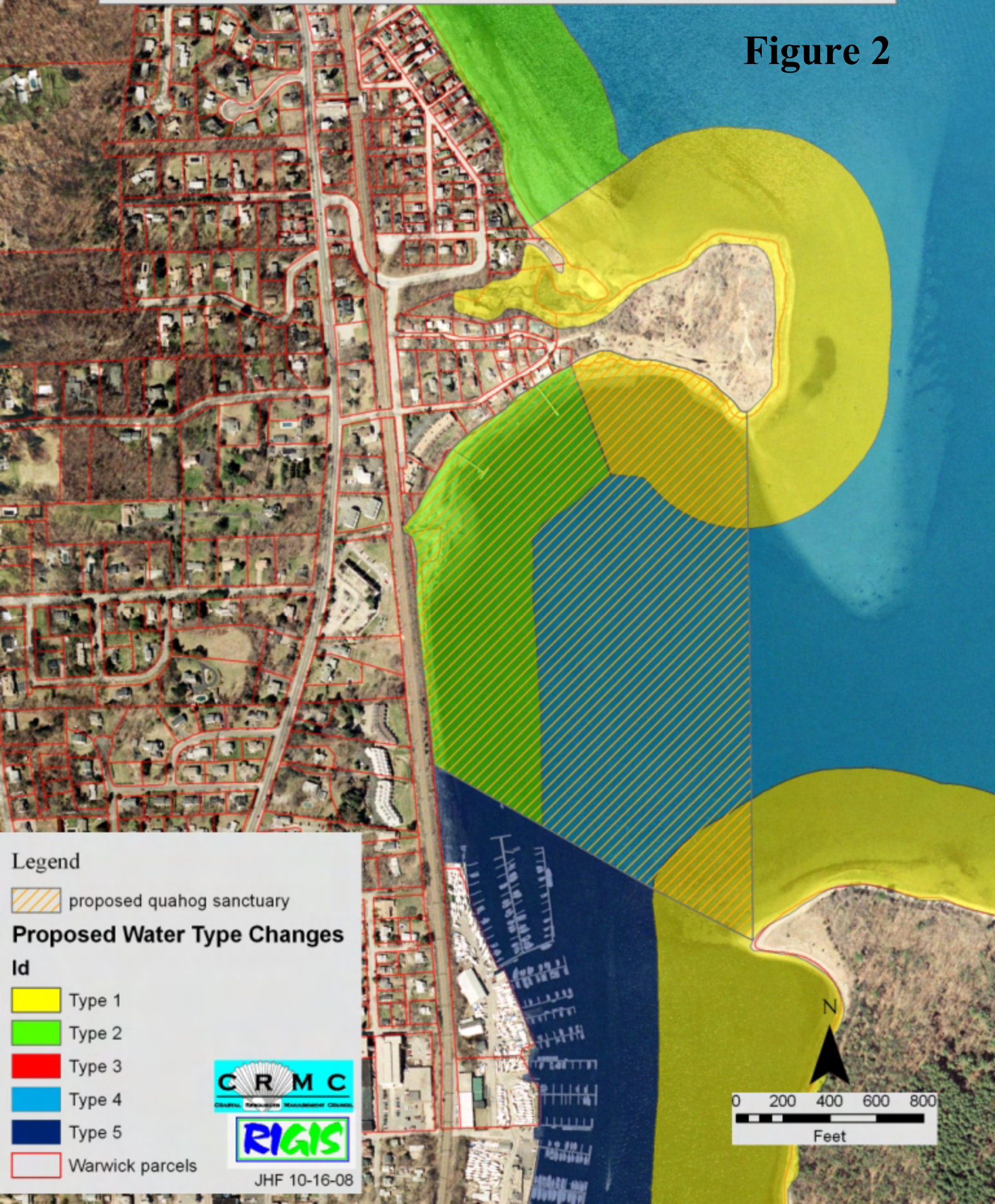
CRMC
CENTRAL RHODE ISLAND MANAGEMENT COUNCIL

RIGIS







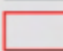



Greenwich Bay Proposed Water Type Changes


Figure 2



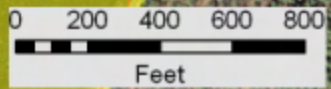
Legend

-  proposed quahog sanctuary
- Proposed Water Type Changes**
- Id**
-  Type 1
-  Type 2
-  Type 3
-  Type 4
-  Type 5
-  Warwick parcels


CRMC
Coastal Resource Management Council


RIGIS

JHF 10-16-08



Greenwich Bay Water Types

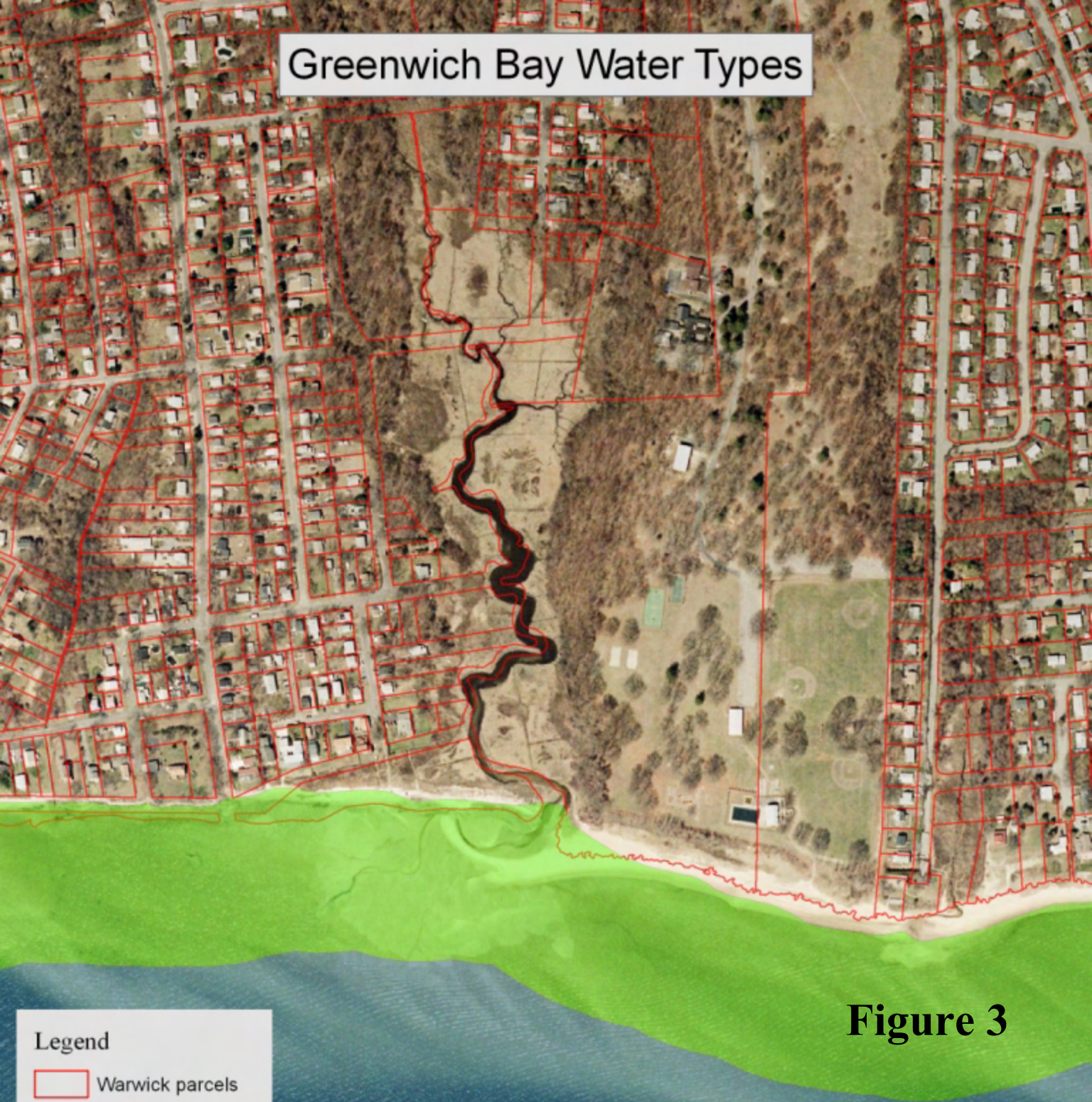
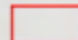


Figure 3

Legend

 Warwick parcels

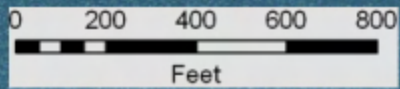
CRMC Water Types

Type

-  1
-  2
-  3
-  4
-  5
-  6



N



Greenwich Bay Proposed Water Type Changes

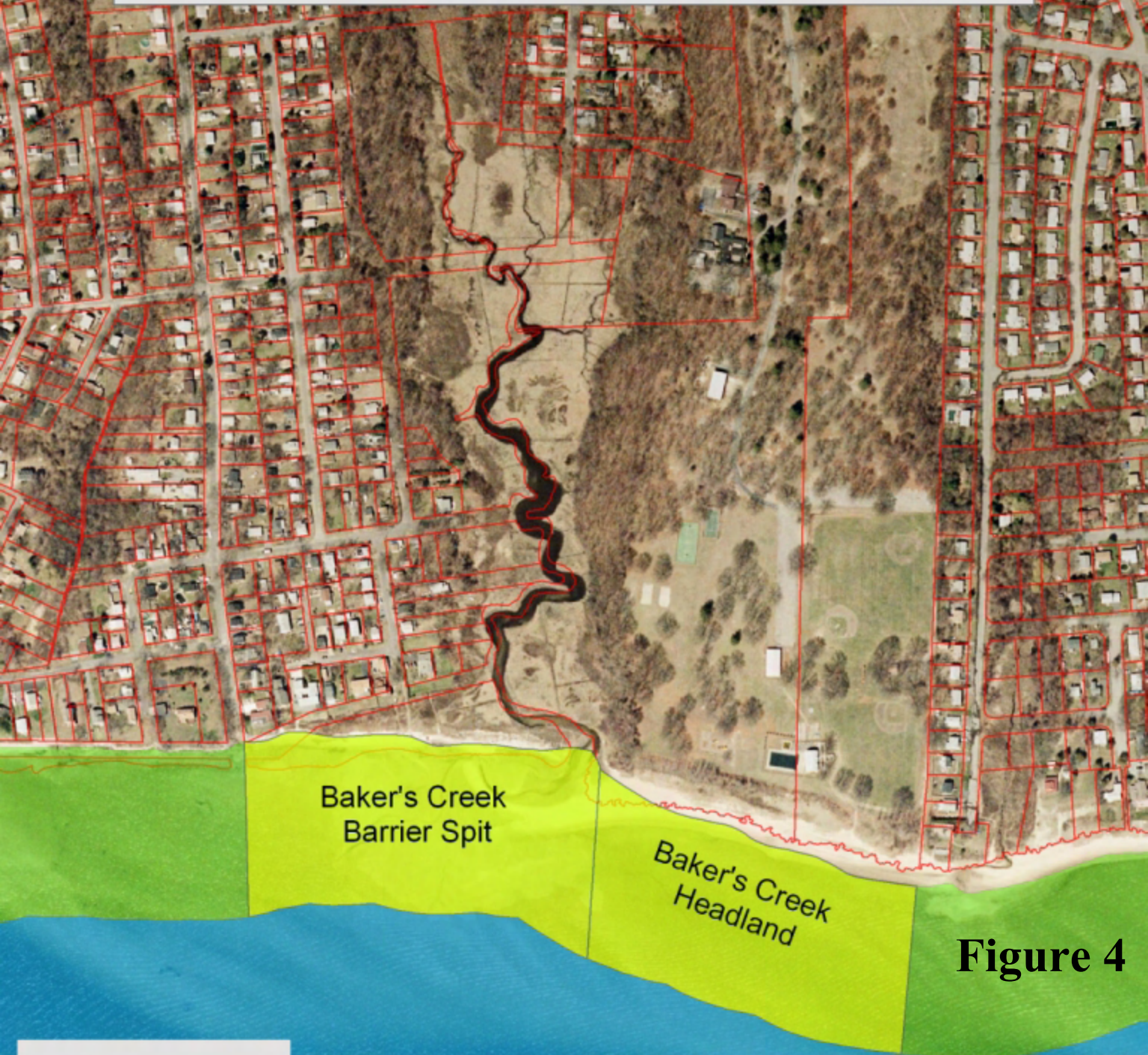


Figure 4

Legend

proposed changes

- Type 1
- Type 2
- Type 3
- Type 4
- Type 5
- Warwick parcels

