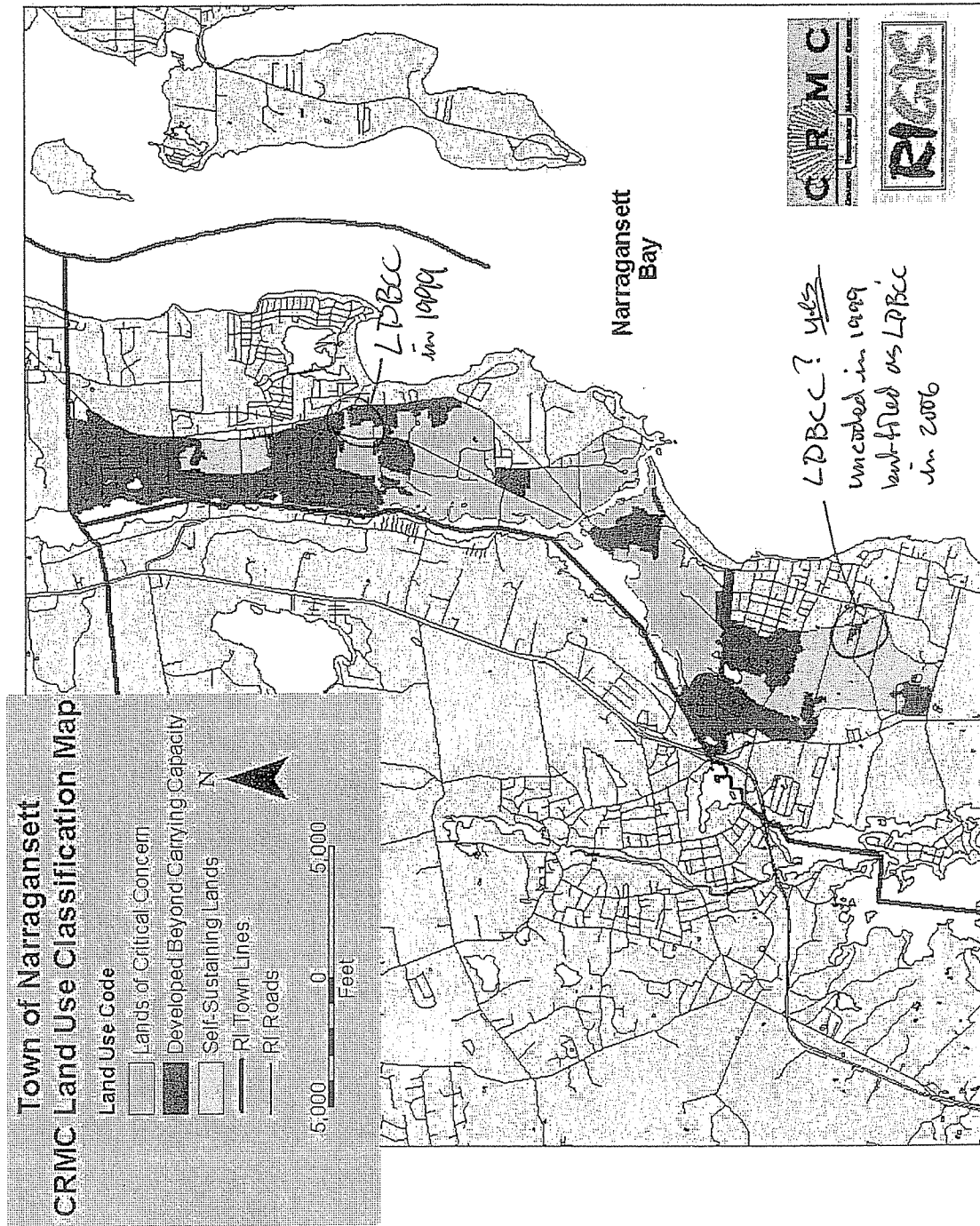


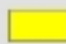


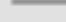
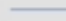
1999

Figure 9-1. Land Use Classification System for the Town of Narragansett.

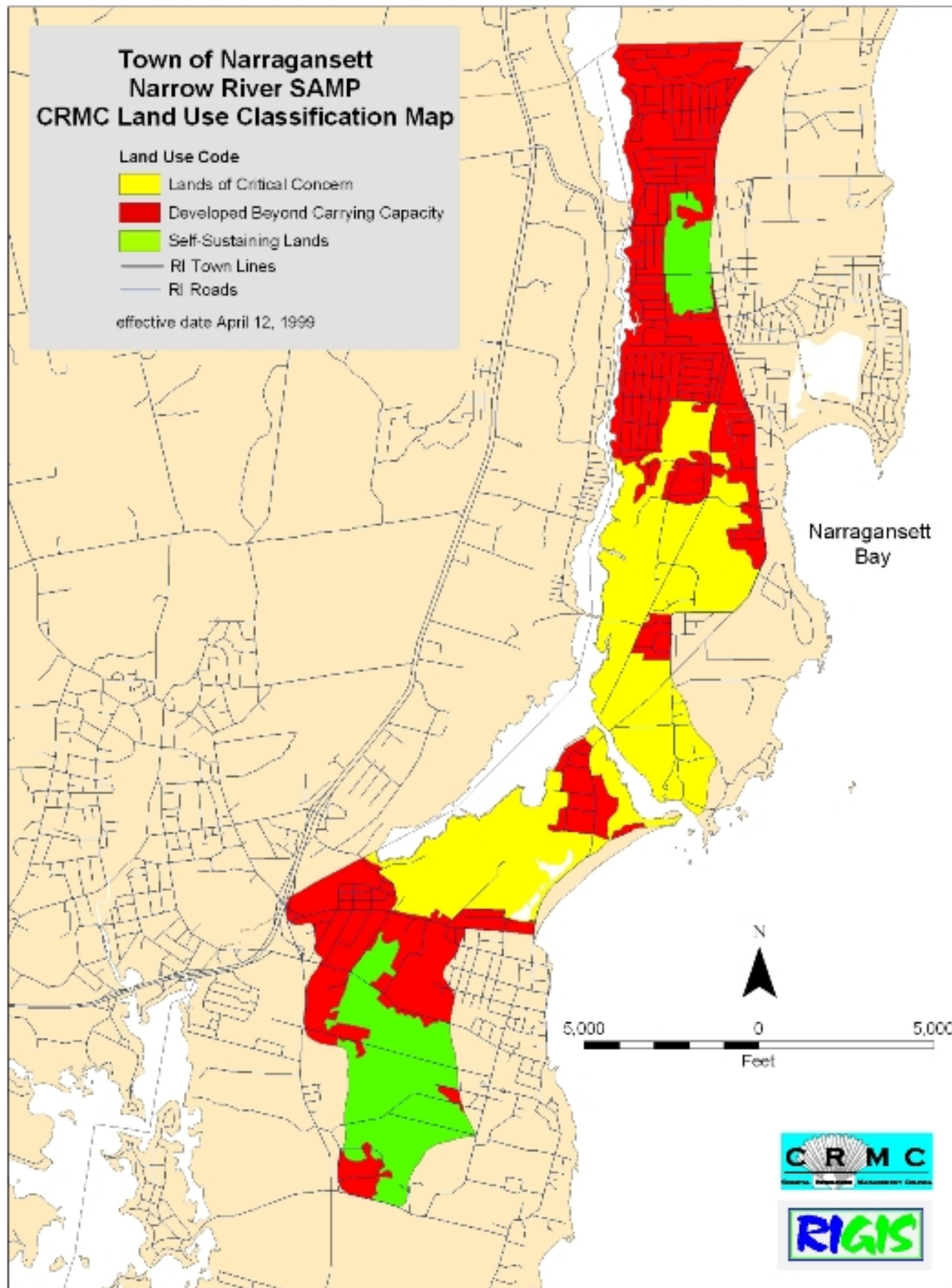


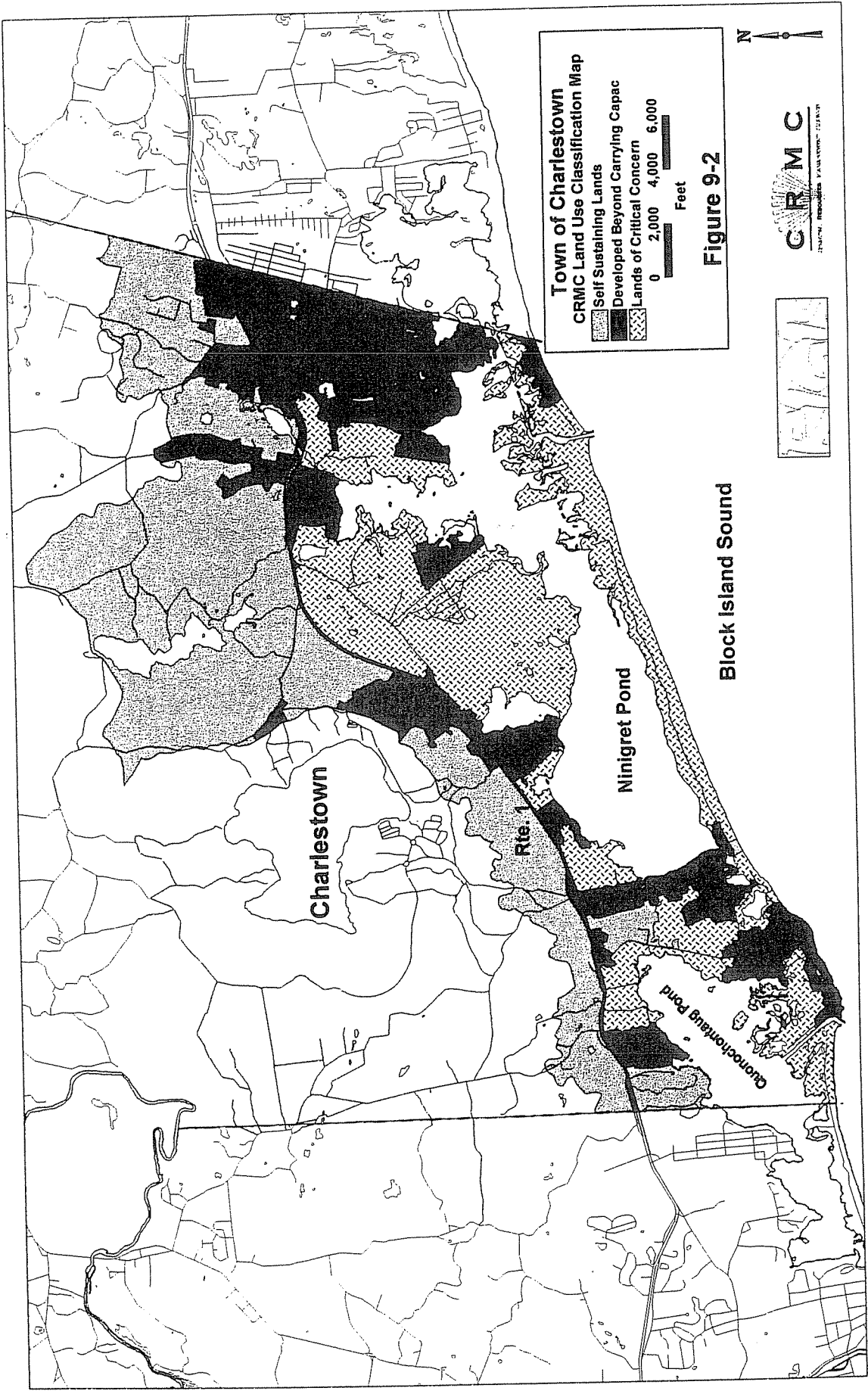
Town of Narragansett Narrow River SAMP CRMC Land Use Classification Map

Land Use Code

-  Lands of Critical Concern
-  Developed Beyond Carrying Capacity
-  Self-Sustaining Lands
-  RI Town Lines
-  RI Roads

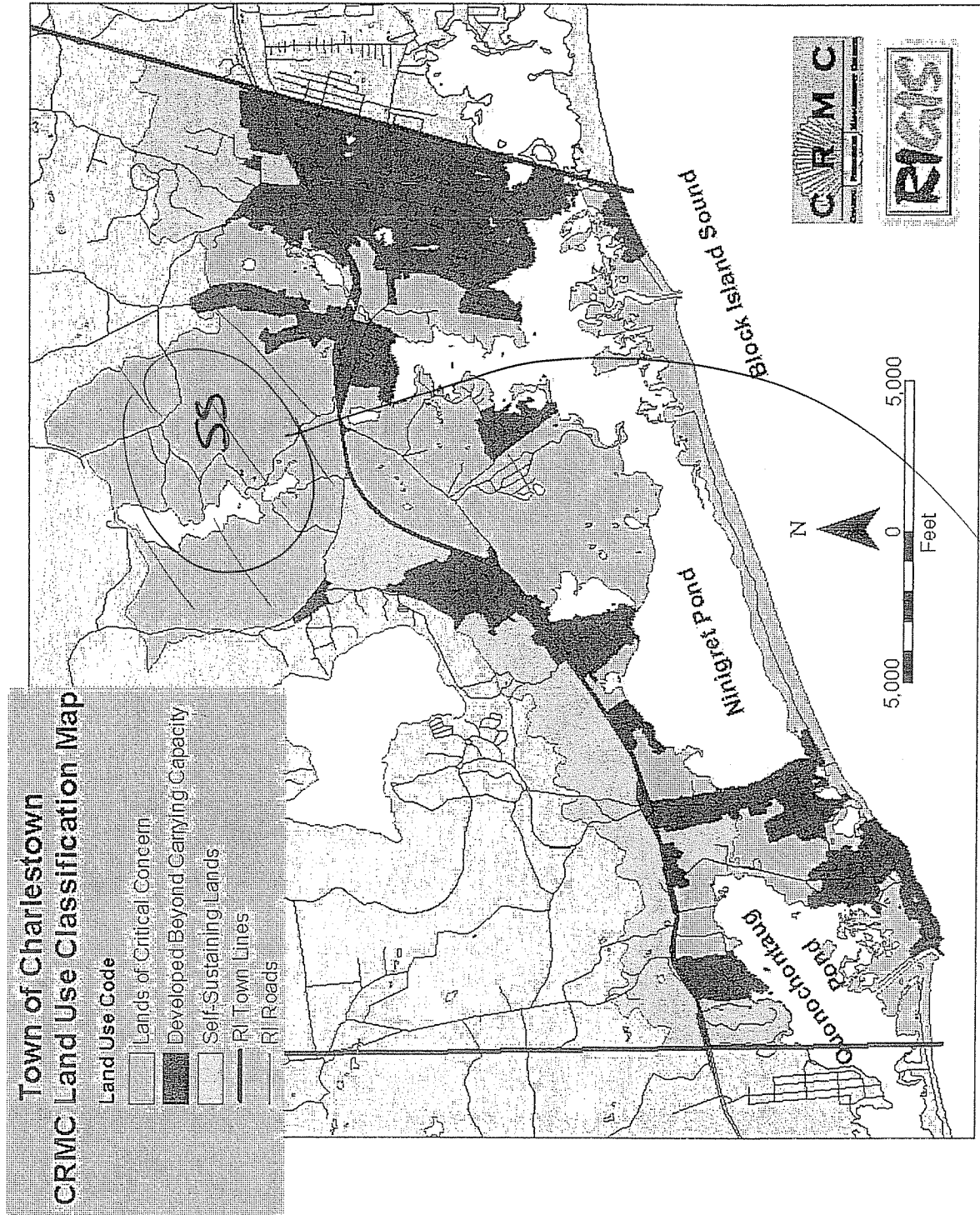
effective date April 12, 1999





1991

Figure 9-2. Land Use Classification System for the Town of Charlestown.



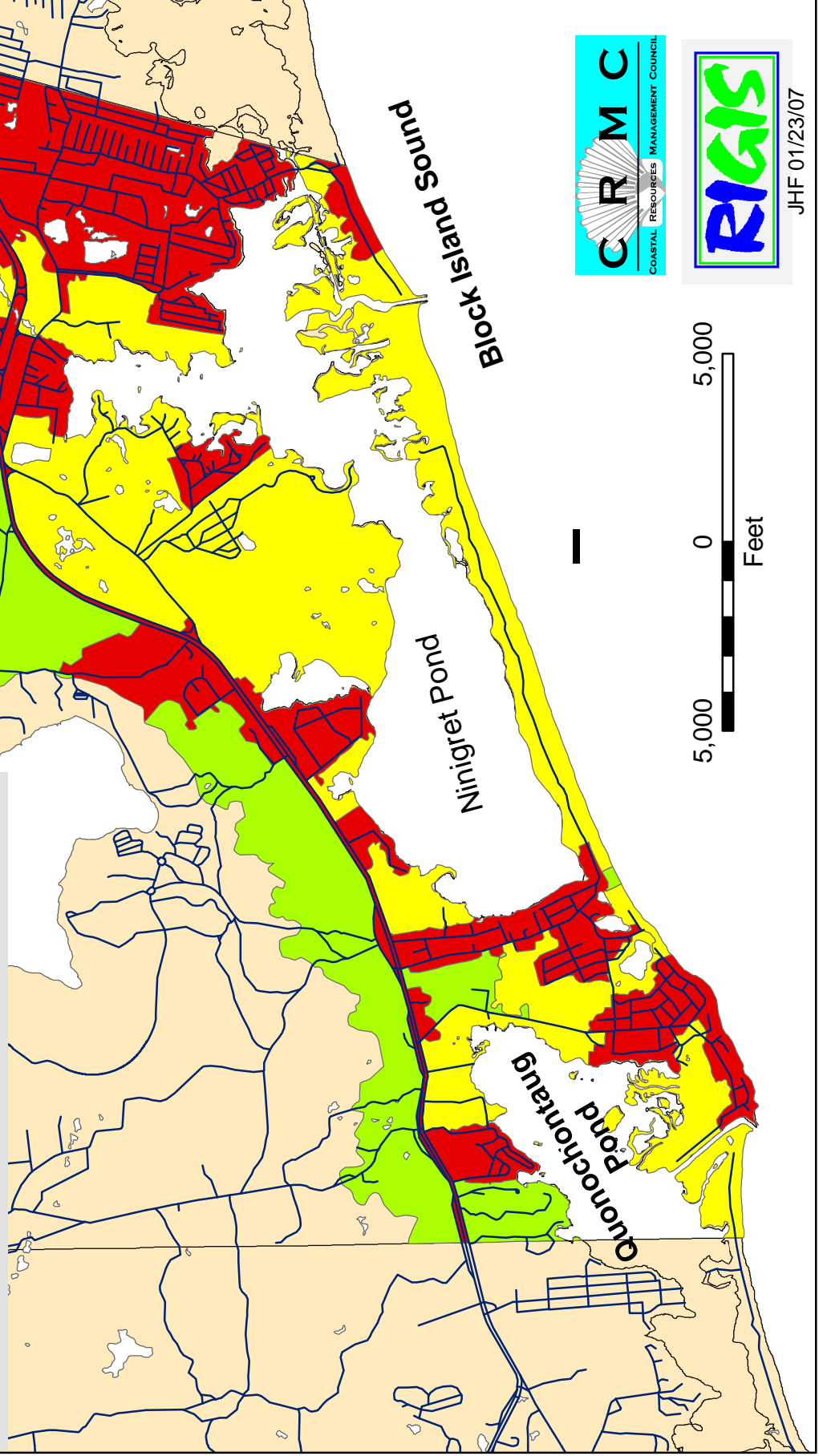
Self-sustaining in 1999, not Critical Concern

Town of Charlestown Salt Pond Region SAMP CRMC Land Use Classification Map

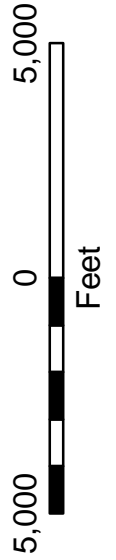
Land Use Code

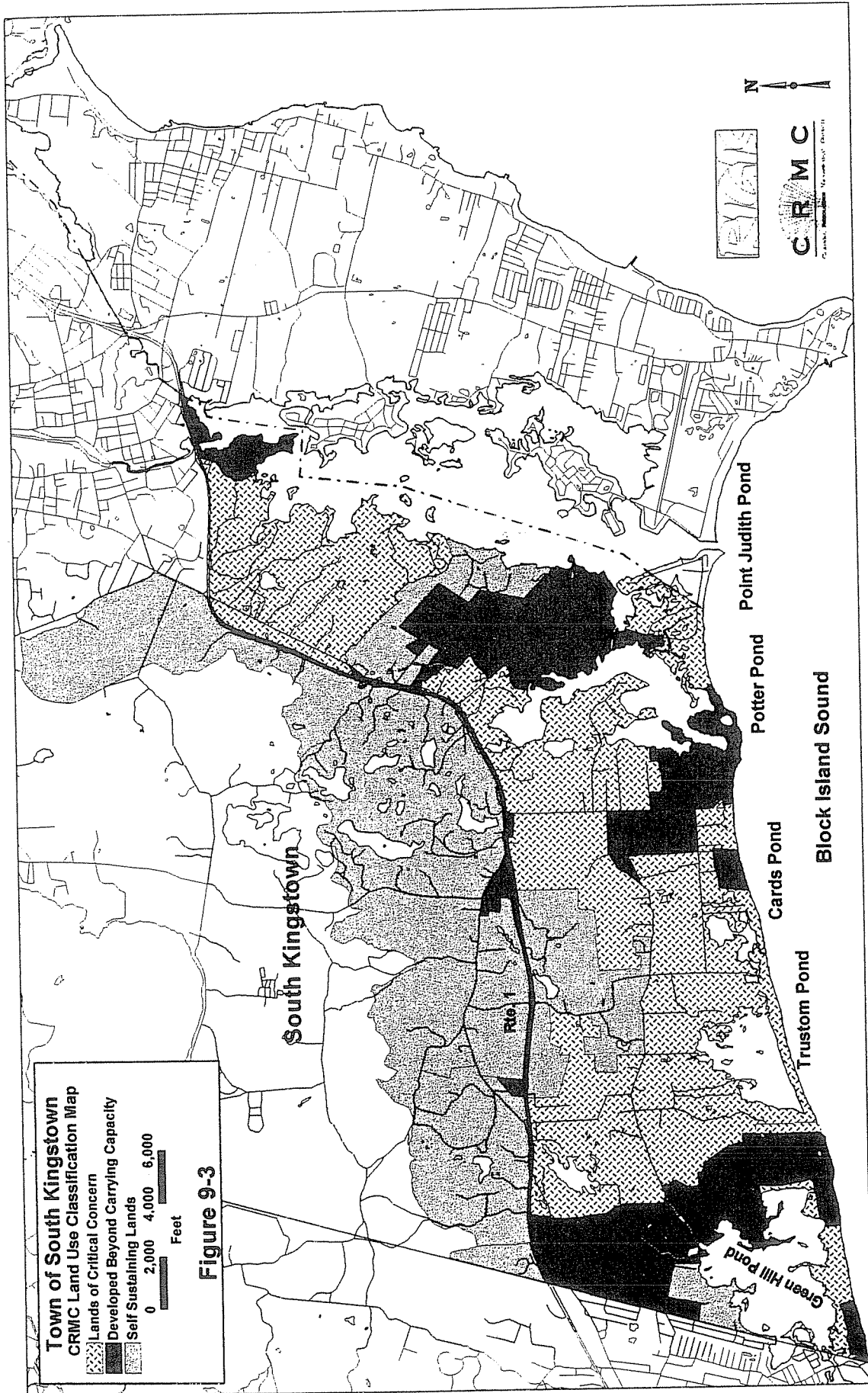
- Lands of Critical Concern
- Developed Beyond Carrying Capacity
- Self-Sustaining Lands
- RI Roads

effective April 12, 1999



JHF 01/23/07



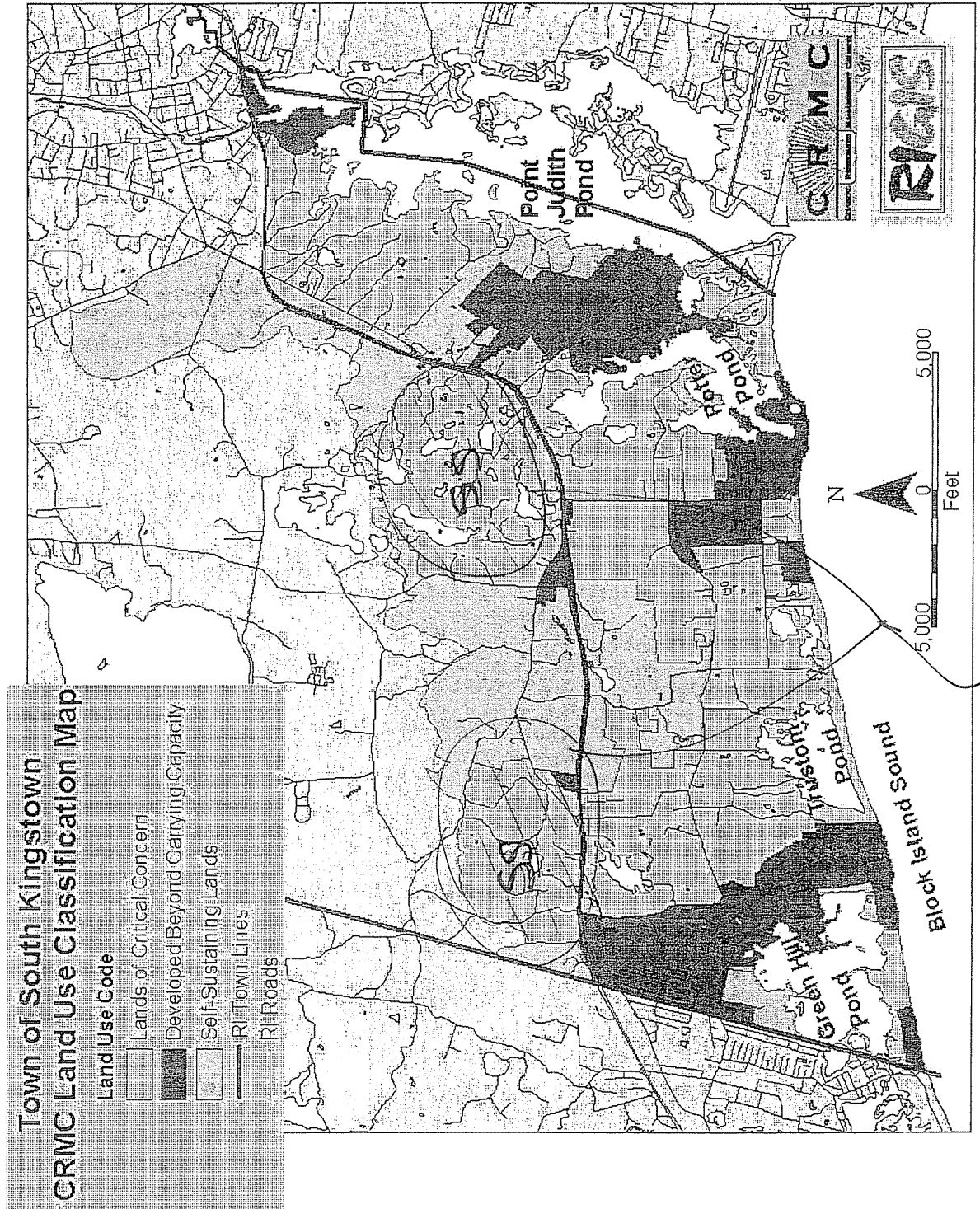


Town of South Kingstown
CRMC Land Use Classification Map
 Lands of Critical Concern
 Developed Beyond Carrying Capacity
 Self Sustaining Lands
 0 2,000 4,000 6,000
 Feet

Figure 9-3

1999





Figure 9-3. Land Use Classification System for the Town of South Kingstown.



Self-sustaining in 1999, not Critical Concern

Town of South Kingstown Salt Pond Region SAMP CRMC Land Use Classification Map

Land Use Code

-  Lands of Critical Concern
-  Developed Beyond Carrying Capacity
-  Self-Sustaining Lands
-  RI Roads

effective April 12, 1999

