

Fisheries Economic Exposure Review – Rhode Island CRMC

November 16, 2023

SouthCoast Wind - Overview

- **Lease Area**

- 127,388 acres
- Up to 149 wind turbine/offshore substation platform positions
- ~25 nautical miles south of Nantucket
- 1 x 1 nautical mile grid layout

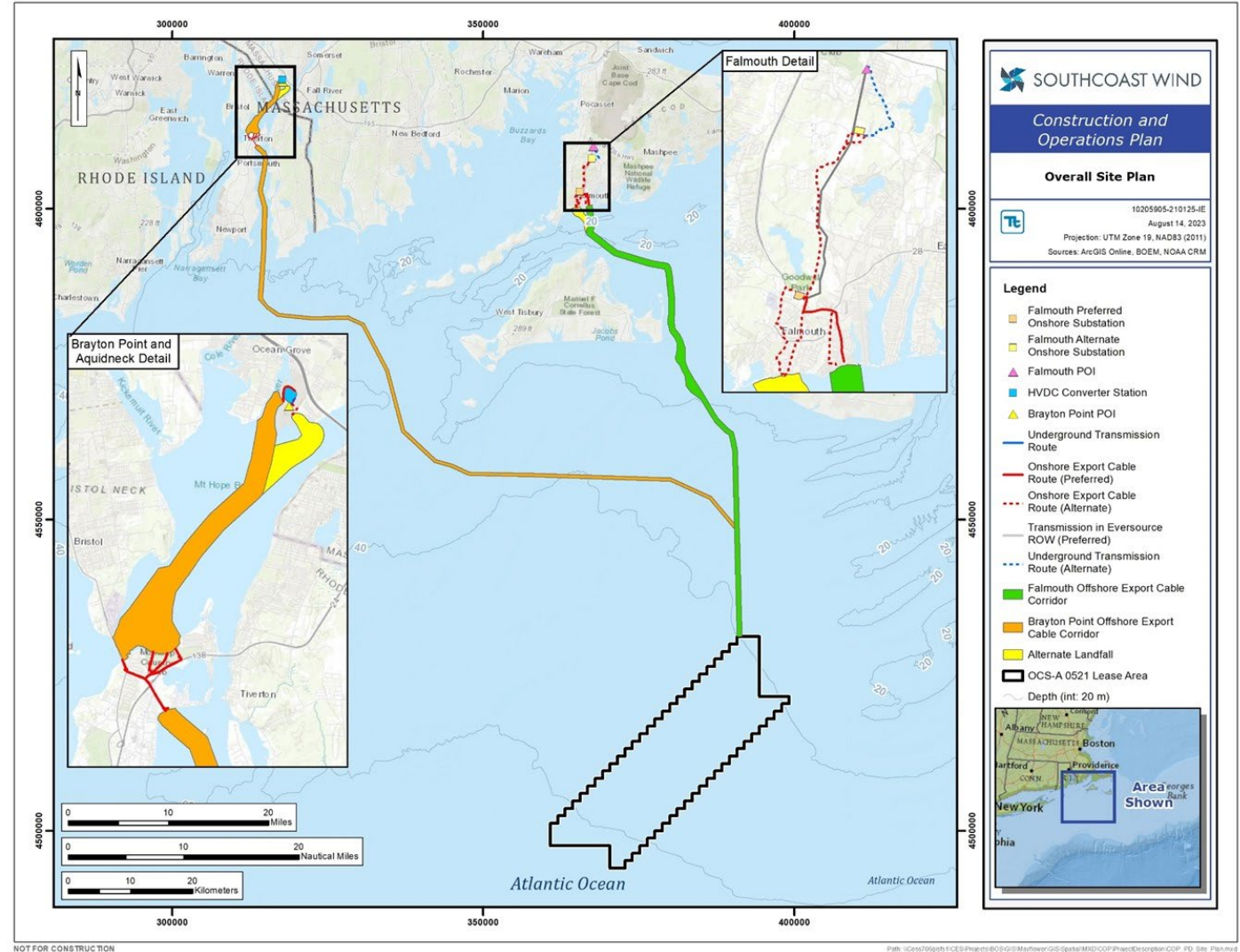
- **Generation Potential**

- Estimated 2,400 MW+ total generating capacity depending on technologies
- ~1,200 MW per project

- **Fisheries Economic Exposure**

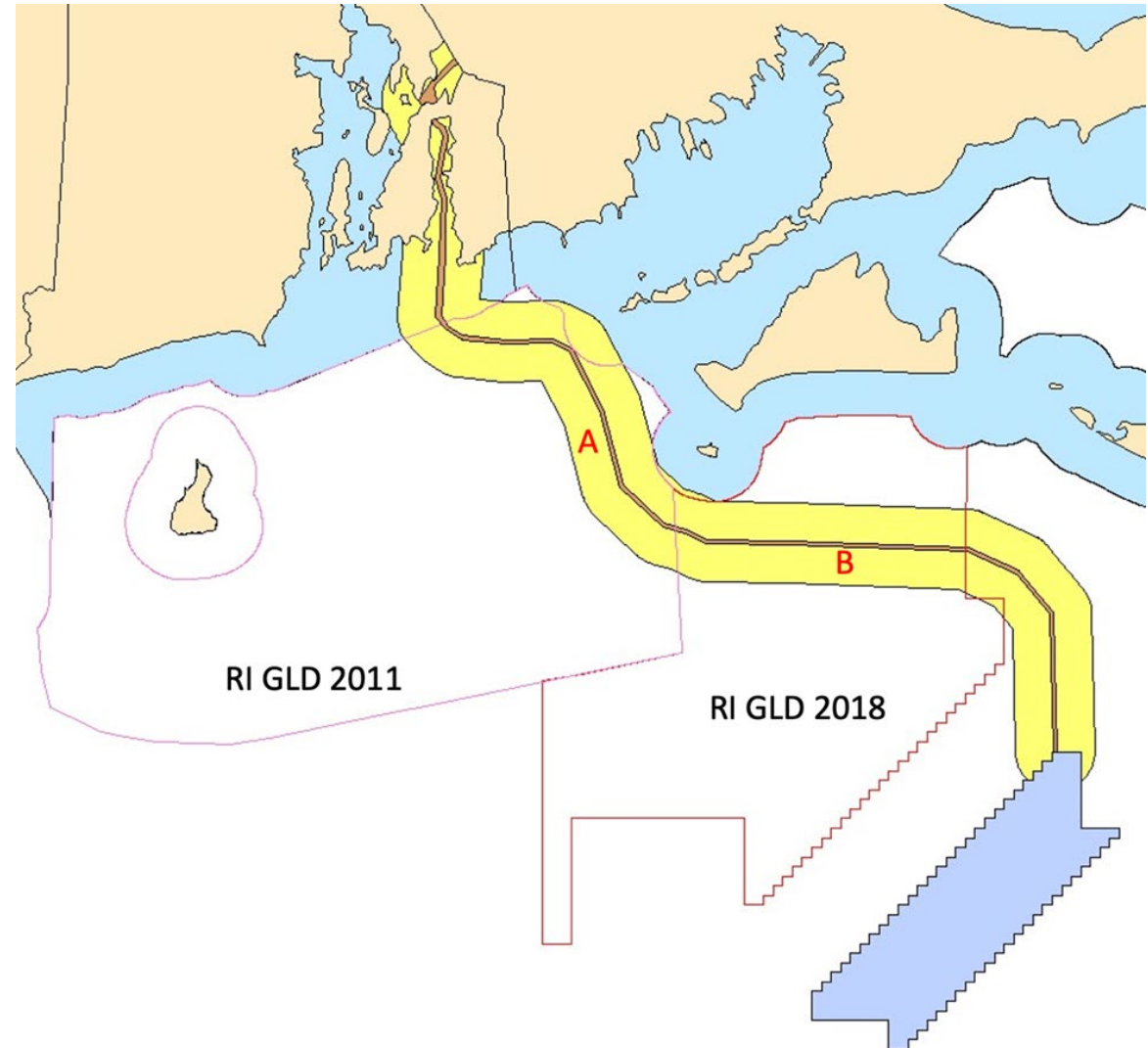
- Conducting analysis to determine mitigation measures for RI and MA

- **The focus of today is Baseline Assessment for Economic Exposure Analysis (WHOI)**



Rhode Island Fisheries Exposure Area of Focus

- **Baseline assessment and exposure analysis to reflect jurisdiction of CRMC federal consistency review**
 - RI Geographic Location Description 2011 (Area A)
 - RI Geographic Location Description 2018 (Area B)
- Fishery exposure in RI state waters will be addressed through separate permitting process (Category B Assent)



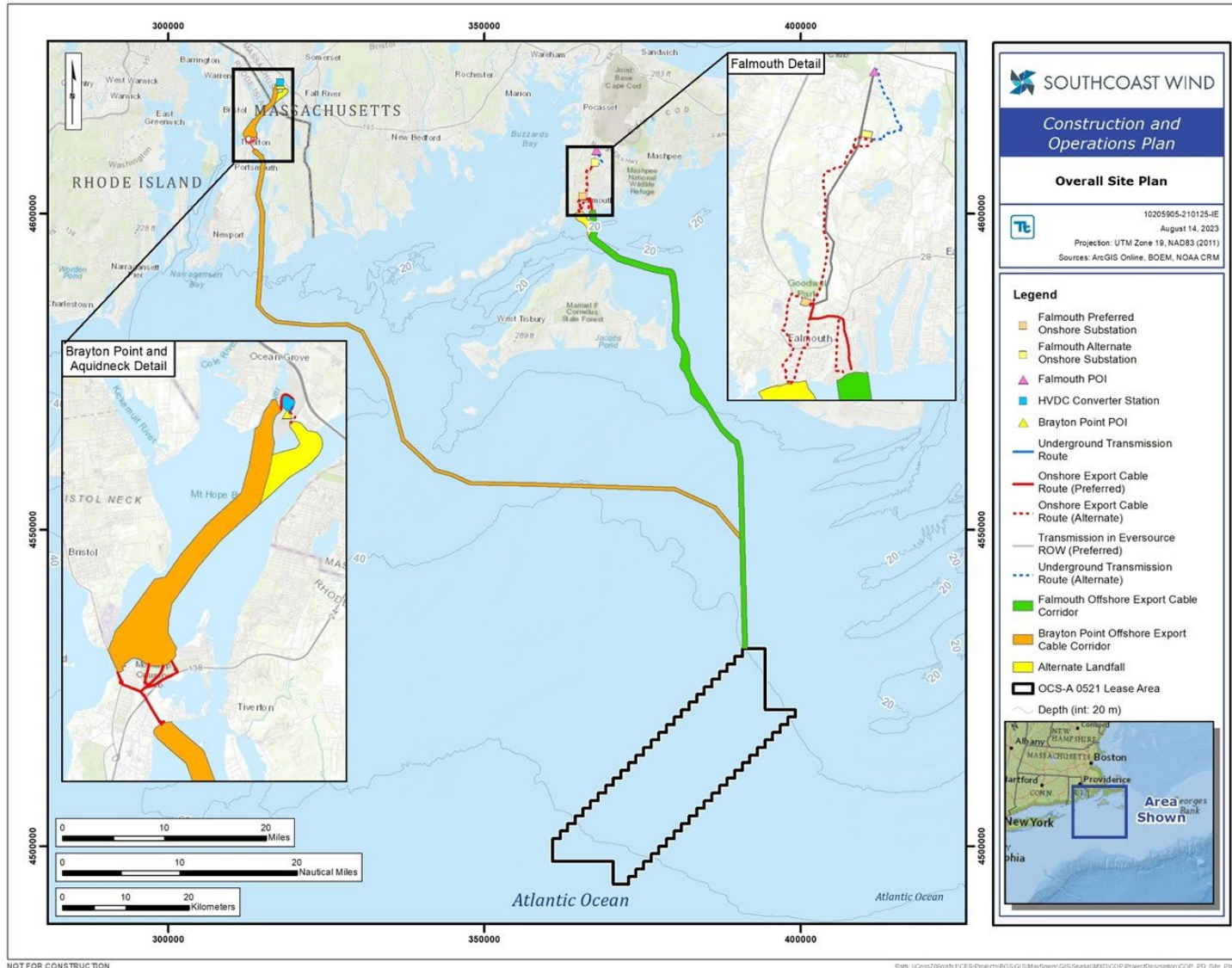
SouthCoast Wind Fisheries Exposure for Rhode Island GLDs in Federal Waters

Hauke Kite-Powell, Di Jin, and Michael Weir

Marine Policy Center, Woods Hole Oceanographic Institution

16 November 2023

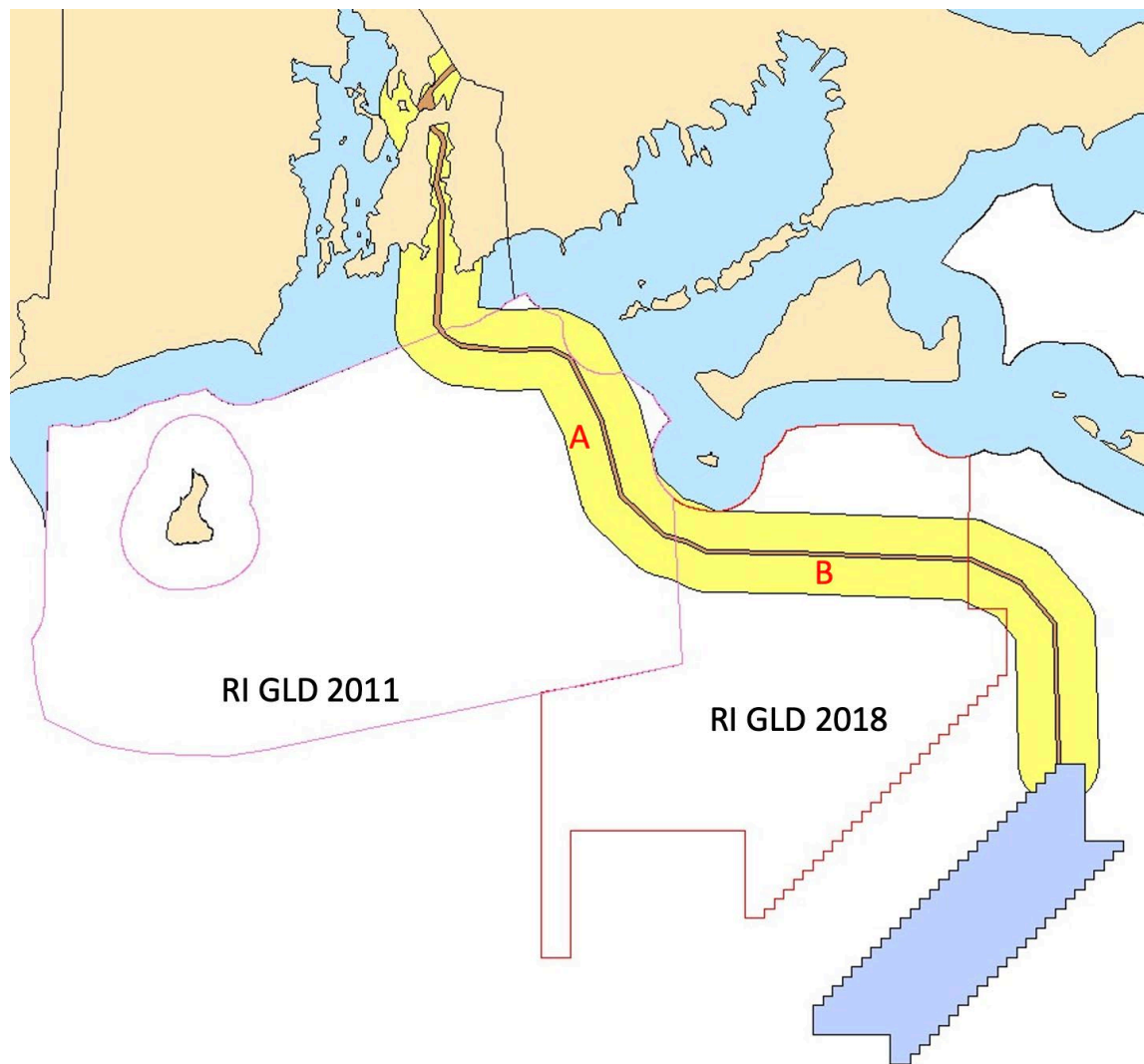
SouthCoast Wind project areas



What is the Rhode Island commercial fishing landed value and charter fishing revenue exposed to development of the federal waters/RI GLD sections of the Brayton Point Export Cable Corridor?

What are indirect and induced effects associated with these landings/revenue?

SouthCoast Wind project areas and RI GLDs



Export Cable Corridor (ECC):
area around the cable route
surveyed by SouthCoast (thin
band in figure on left)

Export Cable Area (ECA):
180m wide band centered on
cable where seafloor may be
disturbed during installation

Export Cable Working Area (ECWA):
1,600m wide band centered on
cable where fishing may be
constrained during installation

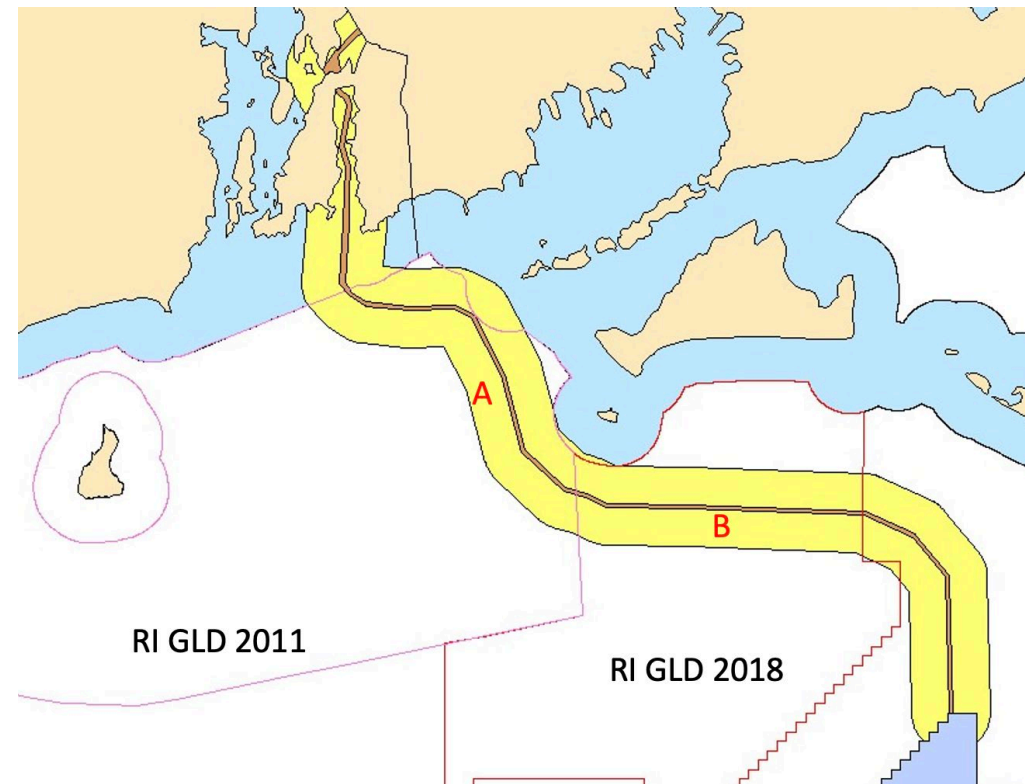
Export Cable Route Area (ECRA):
10km wide area used for
fishery data collection by NOAA
(yellow area in figure on left)

Mapping data to project areas

Data set used: NOAA SouthCoast ECRA, 2008-2021

Key assumption:

Export cable sections A and B landings reflect NOAA SouthCoast ECRA overall average landings



Results: Commercial Landings from Brayton Point ECA/RI GLDs (2023\$)

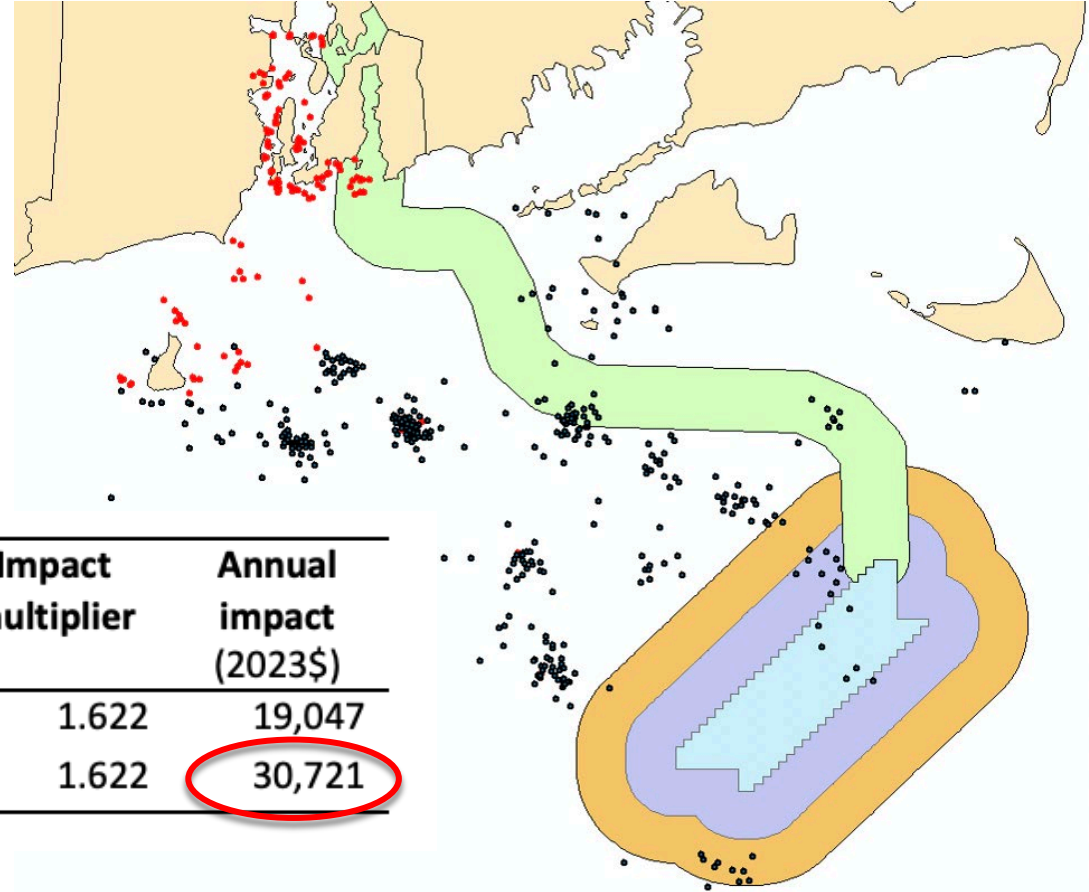
Area	Total landings \$/km/y	Total landings \$/y	RI landings \$/y	RI indirect and induced effects \$/y	RI total value \$/y
Brayton Pt ECA A: RI GLD 2011	\$4,150	\$32,900	\$15,600	\$9,400	\$25,000
Brayton Pt ECA B: RI GLD 2018	\$4,150	\$27,600	\$13,100	\$7,900	\$21,000

RI multipliers (2021) from IMPLAN: 1.311 upstream
 1.511 downstream

For-hire charter fishing survey (2022)

Combined impact, RI-based charter fishing:

\$31,000/year



Area	Annual anglers	Revenue per angler (2023\$)	Scale factor	Annual revenue (2023\$)	Impact multiplier	Annual impact (2023\$)
Brayton Point ECRA	43.3	116.23	2.333	11,743	1.622	19,047
federal waters			3.763	18,940	1.622	30,721

Summary of Baseline Values

Commercial fishing:

RI landings from Brayton Point ECA in RI GLDs/federal:	\$29,000/year
Rhode Island landings with multipliers:	\$46,000/year

For-hire charter fishing:

RI revenue from Brayton Point ECRA in RI GLDs/federal:	\$19,000/year
Rhode Island revenue with multipliers:	\$31,000/year

Brayton Point Export Cable Installation

Installation plan for sections A and B:

- 2 cables within 180 m ECA
- 1st cable: summer/fall 2028, up to 178 days
- 2nd cable: late 2029/early 2030, up to 178 days

Commercial Fishing Exposure Assumptions

Table 13. Assumptions for exposure of commercial fisheries to export cable development

Categories of Potential Effects		Assumptions/Effects	Duration
Availability effects due to construction	1.6km ECWA	All landings reduced 10% (a)	2028, 2029, 2030
	180m ECA	Lobster/crab landings reduced 25% (b) Other shellfish landings reduced 25% (c)	2028, 2029, 2030 2028 - 2033
Construction constrained access	1.6km ECWA	No fishing in 10% of area (d)	6 months 2028 6 months 2029/2030
	180m ECA	No fishing in 100% of area (e)	6 months 2028 6 months 2029/2030
Effects during operations	1.6km ECWA	None	
	180m ECA	None	
Availability effects due to decommissioning	1.6km ECWA	All landings reduced 10% (f)	2060, 2061
	180m ECA	Lobster/crab landings reduced 25% (g) Other shellfish landings reduced 25% (h)	2060, 2061 2060 - 2064
Decommissioning constrained access	1.6km ECWA	No fishing in 10% of area (i)	6 months 2060 6 months 2061
	180m ECA	No fishing in 100% of area (j)	6 months 2060 6 months 2061

Charter Fishing Exposure Assumptions

- No charter fishing revenue from 10 km wide ECRA areas A & B during cable installation work in 2028, 29, and 30
- No charter fishing revenue from ECRA areas A & B during decommissioning (2060, 61)

Present Value of Exposure (2023\$)

Table 18. Summary of baseline and estimated exposure values (2023\$)

	<i>RI landed value or revenue</i>	<i>Indirect and induced effects</i>	<i>Total economic impact in RI</i>
Baseline (\$/year)			
Commercial	29,000	17,000	46,000
Charter	19,000	12,000	31,000
Total	48,000	29,000	77,000
Exposure (\$ present value)			
Commercial	114,000	68,000	182,000
Charter	32,000	20,000	52,000
Total	146,000	88,000	234,000