

Baseline Fisheries  
Economic Exposure Review  
– Rhode Island CRMC

November 2, 2023

# SouthCoast Wind - Overview

- **Lease Area**

- 127,388 acres
- Up to 149 wind turbine/offshore substation platform positions
- ~25 nautical miles south of Nantucket
- 1 x 1 nautical mile grid layout

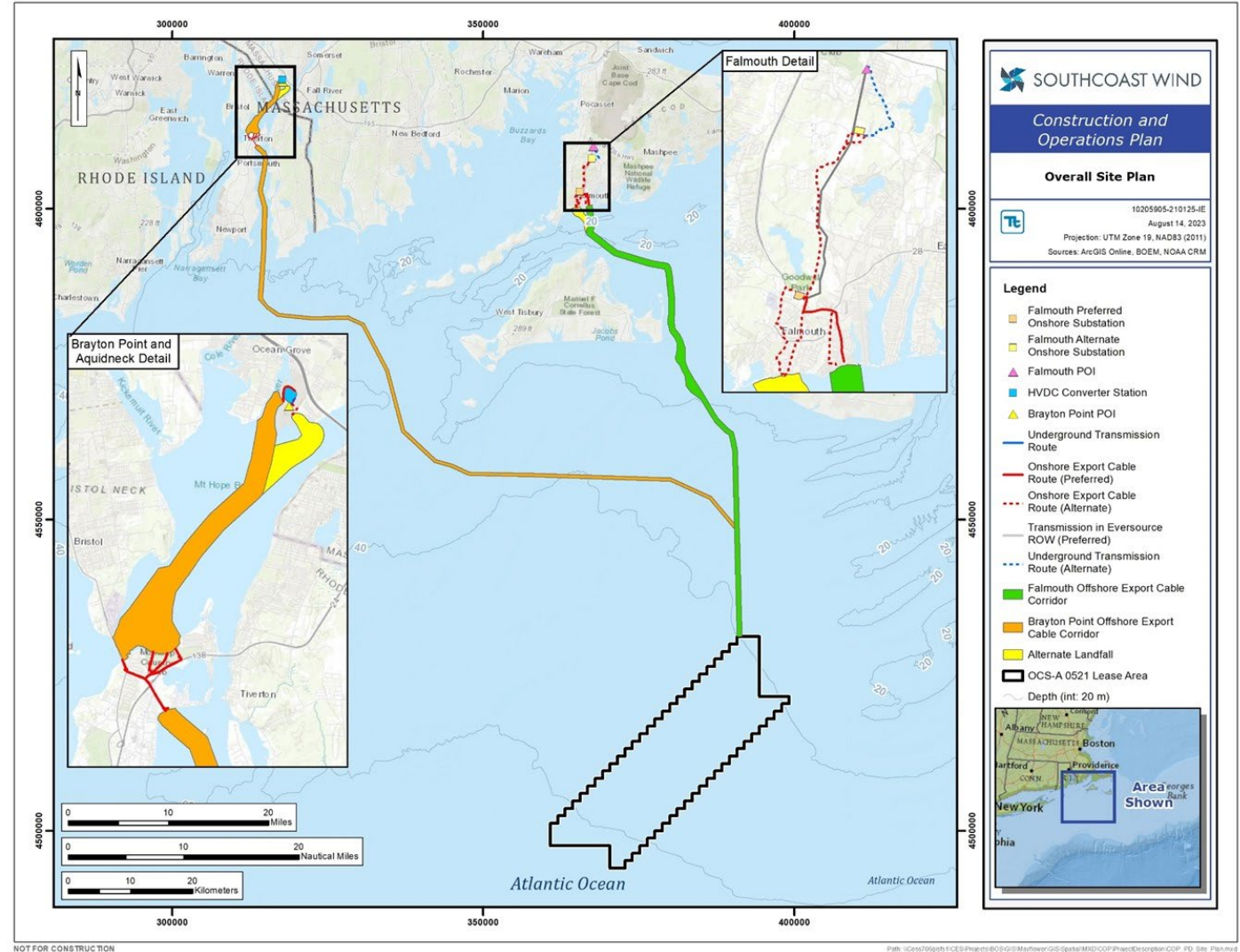
- **Generation Potential**

- Estimated 2,400 MW+ total generating capacity depending on technologies
- ~1,200 MW per project

- **Fisheries Economic Exposure**

- Conducting analysis to determine mitigation measures for RI and MA

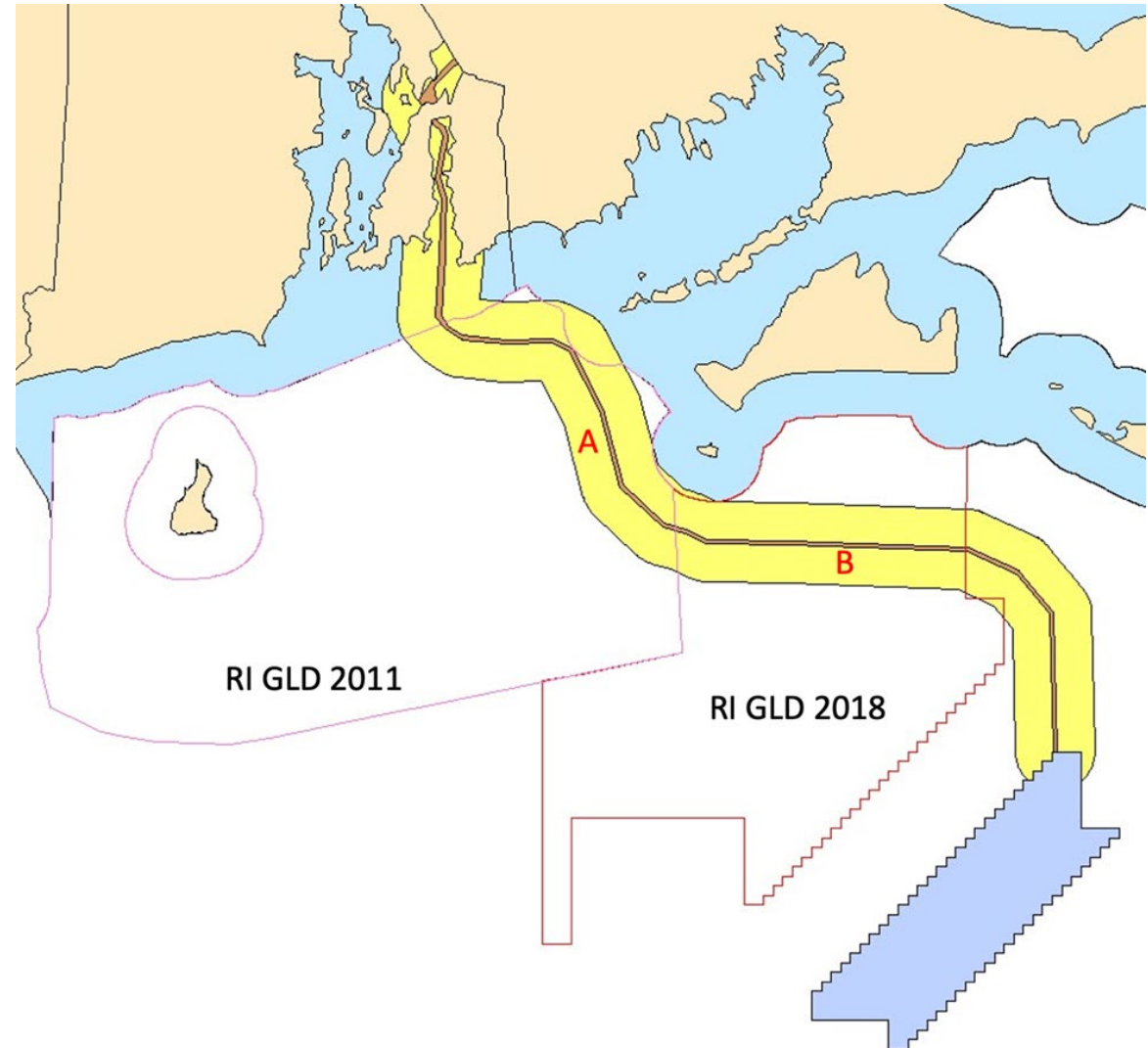
- **The focus of today is Baseline Assessment for Economic Exposure Analysis (WHOI)**





# Rhode Island Fisheries Exposure Area of Focus

- **Baseline assessment and exposure analysis to reflect jurisdiction of CRMC federal consistency review**
  - RI Geographic Location Description 2011 (Area A)
  - RI Geographic Location Description 2018 (Area B)
- Fishery exposure in RI state waters will be addressed through separate permitting process (Category B Assent)



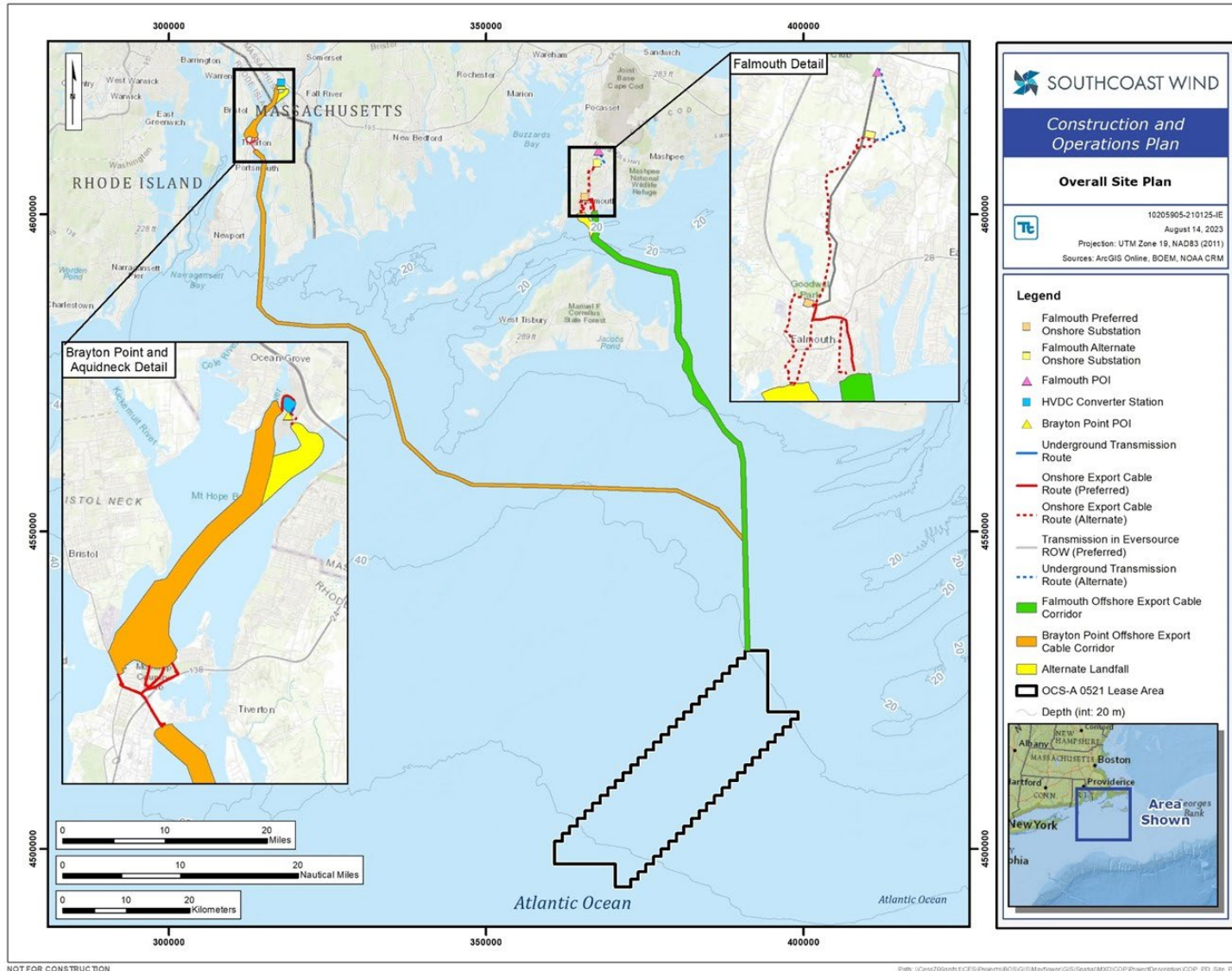
# **SouthCoast Wind Fisheries Baseline for Rhode Island GLDs in Federal Waters**

Hauke Kite-Powell, Di Jin, and Michael Weir

Marine Policy Center, Woods Hole Oceanographic Institution

2 November 2023

# SouthCoast Wind project areas

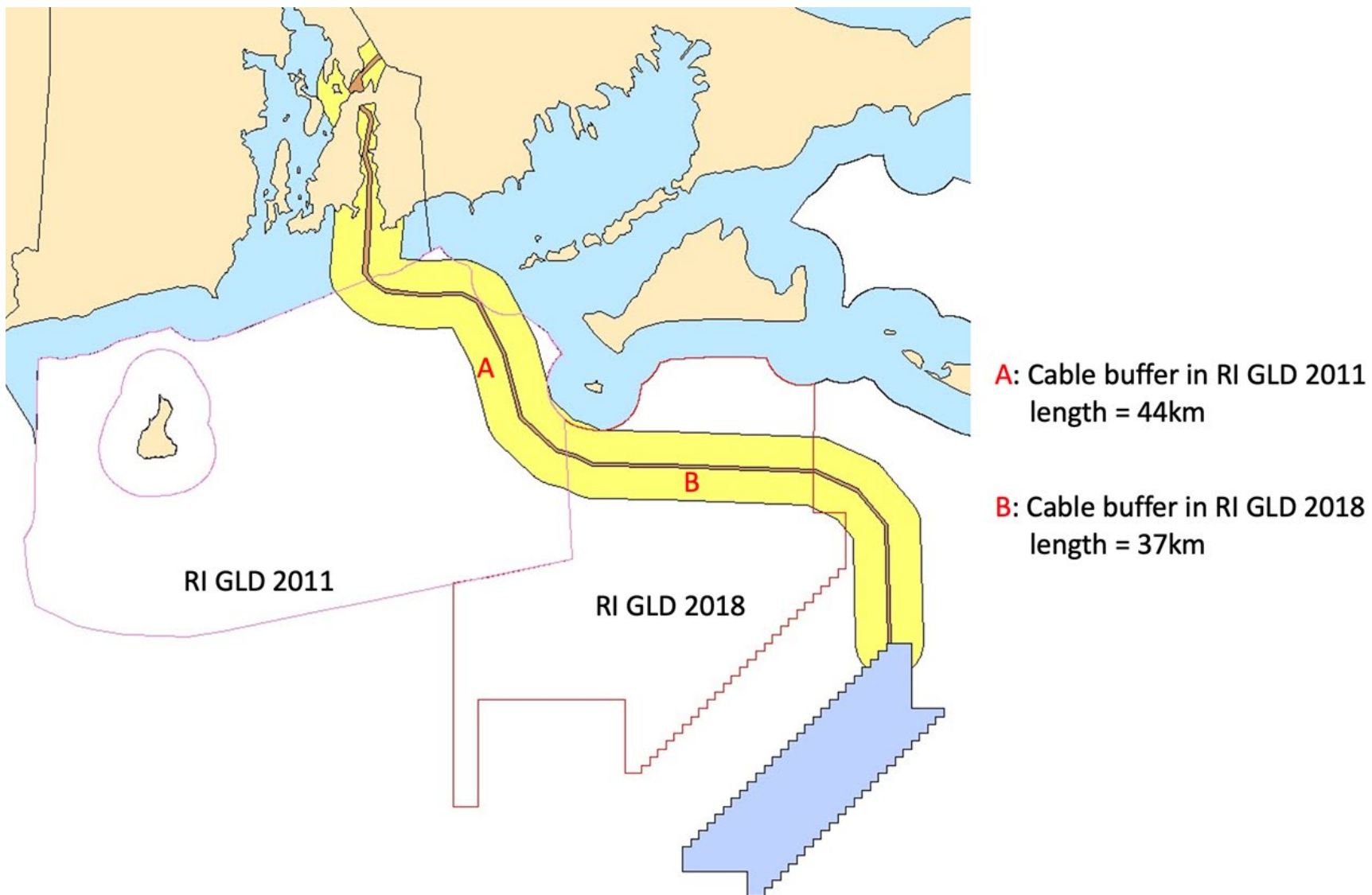


**What are baseline commercial landings associated with Rhode Island from the federal waters/RI GLD sections of the Export Cable Corridors?**

**What is the baseline charter fishing revenue associated with Rhode Island from the federal waters/RI GLD sections of the Export Cable Corridors?**

## What are indirect and induced effects associated with these landings/revenue?

# SouthCoast Wind project areas and RI GLDs

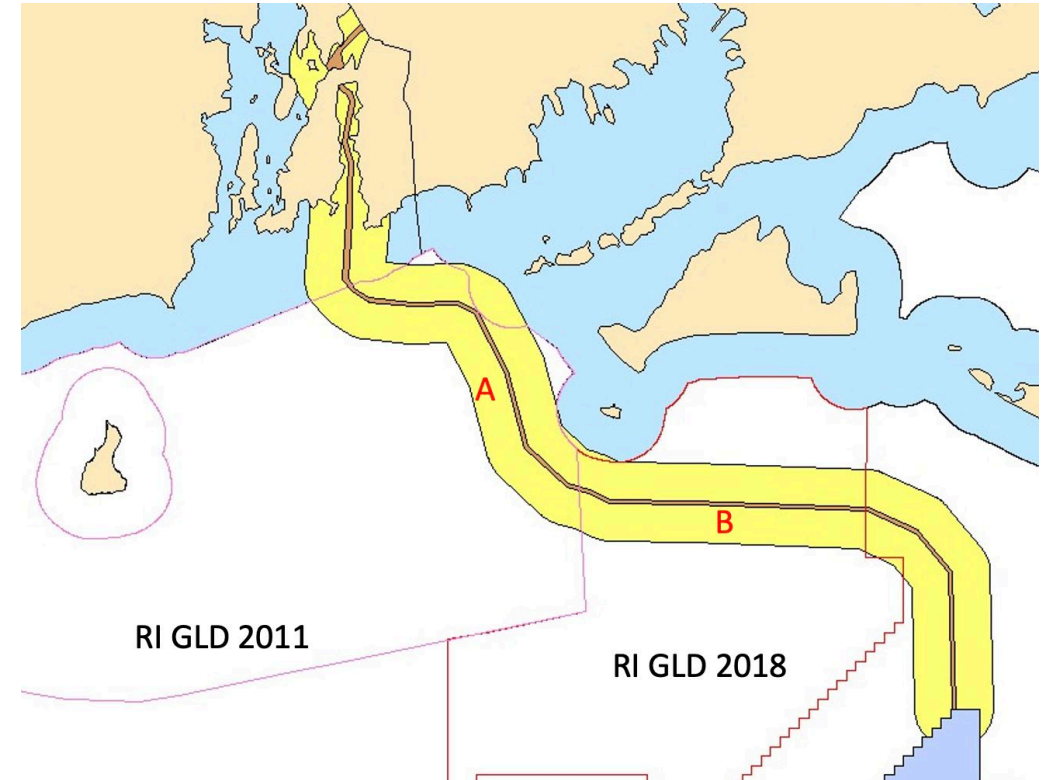


# Mapping data to project areas

Data set used: NOAA SouthCoast ECRA, 2008-2021

Key assumption:

Export cable sections A and B landings reflect NOAA SouthCoast ECRA overall average landings





# NOAA baseline data - details

## Annual value and quantity of commercial fisheries landings from Brayton Point ECA

Rhode Island landings account for about 48% of Brayton Point ECA total

Year	Value (2023\$)	Landings (lbs)
2008	77,946	74,342
2009	57,984	64,216
2010	50,824	77,621
2011	55,577	57,318
2012	61,841	92,477
2013	62,185	134,331
2014	61,786	71,599
2015	73,543	54,892
2016	99,625	75,375
2017	49,263	29,039
2018	39,125	21,311
2019	55,923	33,399
2020	44,583	31,145
2021	75,878	38,992



# NOAA baseline data – details: ports

Annual value and quantity from Brayton Point ECA by major port

Port	<i>Mean</i>		<i>Standard Deviation</i>	
	Value/year (2023\$)	Landings/year (lbs)	Value/year (2023\$)	Landings/year (lbs)
Point Judith, RI	19,690	15,609	8,680	6,563
New Bedford, MA	17,143	24,085	5,883	19,869

# NOAA baseline data – details: species

Annual value and quantity from Brayton Point ECA by species

<b>Species</b>	<b><i>Mean</i></b>		<b><i>Standard Deviation</i></b>	
	<b>Value/year (2023\$)</b>	<b>Landings/year (lbs)</b>	<b>Value/year (2023\$)</b>	<b>Landings/year (lbs)</b>
Longfin Squid	15,786	10,329	11,259	7,264
American Lobster	12,770	1,958	3,052	453
Summer Flounder	6,373	1,540	2,111	666
ALL_OTHERS	4,948	5,596	3,037	4,131

# NOAA baseline data – details: gear types

Annual value and quantity from Brayton Point ECA by gear type

Gear	<i>Mean</i>		<i>Standard Deviation</i>	
	Value/year	Landings/year	Value/year	Landings/year
	(2023\$)	(lbs)	(2023\$)	(lbs)
ALL_OTHERS	2,207	2,540	3,707	4,665
Dredge – Clam	3,041	3,316	2,975	3,419
Dredge – Scallop	2,791	248	2,604	279
Gillnet – Sink	4,122	4,132	1,928	2,431
Handline	297	77	252	58
Longline – Bottom	-	-	-	-
Pot – Lobster	13,904	3,157	2,798	745
Pot – Other	3,526	716	1,576	363
Trawl – Bottom	29,879	31,729	12,362	10,455
Trawl – Midwater	2,096	15,231	3,209	23,313

## Results: Brayton Point ECA/RI GLDs (2023\$)

Area	Total landings \$/km/y	Total landings \$/y	RI landings \$/y	RI indirect and induced effects \$/y	RI total value \$/y
Brayton Pt ECA B: RI GLD 2011	\$4,150	\$32,900	\$15,600	\$9,400	\$25,000
Brayton Pt ECA C: RI GLD 2018	\$4,150	\$27,600	\$13,100	\$7,900	\$21,000

RI multipliers (2021) from IMPLAN:

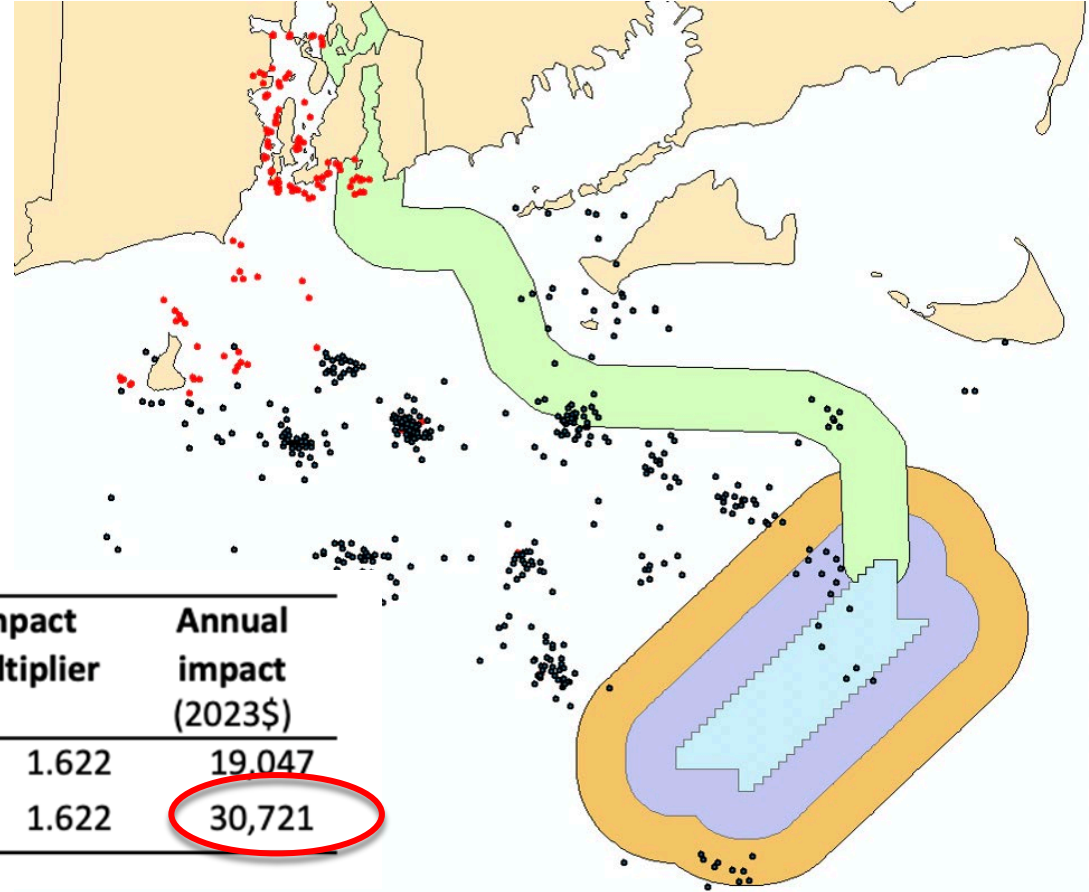
	1.311 upstream
	1.511 downstream



# For-hire charter fishing survey (2022)

Combined impact, RI-based charter fishing:

**\$31,000/year**



Area	Annual anglers	Revenue per angler (2023\$)	Scale factor	Annual revenue (2023\$)	Impact multiplier	Annual impact (2023\$)
Brayton Point ECRA	43.3	116.23	2.333	11,743	1.622	19,047
federal waters			3.763	18,940	1.622	30,721

# Summary

## Commercial fishing:

RI landings from Brayton Point ECA in RI GLDs/federal:	\$19,000/year
Rhode Island landings with multipliers:	\$46,000/year

## For-hire charter fishing:

RI revenue from Brayton Point ECRA in RI GLDs/federal:	\$19,000/year
Rhode Island revenue with multipliers:	\$31,000/year

# Next Steps

Today:

- Feedback on baseline analysis
- Finalize baseline values

Next meeting:

- Estimate effects of construction, operation, and decommissioning activities for each project year
- Calculate expected exposure (reduction in landed value) relative to baseline