



State of Rhode Island
Coastal Resources Management Council
Oliver H. Stedman Government Center
4808 Tower Hill Road, Suite 3
Wakefield, RI 02879-1900

(401) 783-3370
Fax (401) 783-2069

PUBLIC NOTICE

File Number: 2024-01-077 Date: June 3, 2024

This office has under consideration the application of:

Thomas & Rosemary Patalano
177 Charlotte Drive
Warwick, RI 02818

for a State of Rhode Island Assent to construct and maintain: Construct and maintain a residential boating facility consisting of a fixed pier, ramp and terminal float with an overall length of 105.9 feet. A variance is requested to Section 1.3.1.D.4.a to extend to 75' beyond mean low water to attain adequate water depth. The facility will be located 14.5' feet from the property line. A letter of no objection has been obtained from the abutting property owner.

Project Location:	177 Charlotte Drive
City/Town:	Warwick
Plat/Lot:	201 / 56
Waterway:	Greenwich Bay

Plans of the proposed work can be requested at Cstaff1@crmc.ri.gov.

In accordance with the Administrative Procedures Act (Chapter 42-35 of the Rhode Island General Laws) you may request a hearing on this matter.

You are advised that if you have good reason to enter protests against the proposed work it is your privilege to do so. It is expected that objectors will review the application and plans thoroughly, visit site of proposed work if necessary, to familiarize themselves with the conditions and cite what law or laws, if any, would in their opinion be violated by the work proposed.

If you desire to protest, you must attend the scheduled hearing and give sworn testimony. A notice of the time and place of such hearing will be furnished you as soon as possible after receipt of your request for hearing. If you desire to request a hearing, to receive consideration, it should be in writing (**with your correct mailing address, e-mail address and valid contact number**) and be received at this office on or before July 3, 2024.

Please email your comments/hearing requests to: cstaff1@crmc.ri.gov; or mail via USPS to: Coastal Resources Management Council; O. S. Government Center, 4808 Tower Hill Road, Rm 116; Wakefield, RI 02879.

/lat



RECEIVED
JAN 22 2024
COASTAL RESOURCES
MANAGEMENT COUNCIL

DK-2

OWNER/SITE INFO:
RESIDENTIAL BOATING FACILITY
177 CHARLOTTE DR.
EAST GREENWICH, RI 02818



THIS SET INCLUDES THE FOLLOWING:
1. GENERAL NOTES
2. ELEVATIONS
3. PLAN
4. SECTION
5. DETAIL
6. RAMP
7. RAMP
8. RAMP
9. RAMP
10. RAMP
11. RAMP
12. RAMP
13. RAMP
14. RAMP
15. RAMP
16. RAMP
17. RAMP
18. RAMP
19. RAMP
20. RAMP
21. RAMP
22. RAMP
23. RAMP
24. RAMP
25. RAMP
26. RAMP
27. RAMP
28. RAMP
29. RAMP
30. RAMP
31. RAMP
32. RAMP
33. RAMP
34. RAMP
35. RAMP
36. RAMP
37. RAMP
38. RAMP
39. RAMP
40. RAMP
41. RAMP
42. RAMP
43. RAMP
44. RAMP
45. RAMP
46. RAMP
47. RAMP
48. RAMP
49. RAMP
50. RAMP
51. RAMP
52. RAMP
53. RAMP
54. RAMP
55. RAMP
56. RAMP
57. RAMP
58. RAMP
59. RAMP
60. RAMP
61. RAMP
62. RAMP
63. RAMP
64. RAMP
65. RAMP
66. RAMP
67. RAMP
68. RAMP
69. RAMP
70. RAMP
71. RAMP
72. RAMP
73. RAMP
74. RAMP
75. RAMP
76. RAMP
77. RAMP
78. RAMP
79. RAMP
80. RAMP
81. RAMP
82. RAMP
83. RAMP
84. RAMP
85. RAMP
86. RAMP
87. RAMP
88. RAMP
89. RAMP
90. RAMP
91. RAMP
92. RAMP
93. RAMP
94. RAMP
95. RAMP
96. RAMP
97. RAMP
98. RAMP
99. RAMP
100. RAMP

PROFILE & DETAILS
RESIDENTIAL BOATING FACILITY
PLAT 201, LOT 56
177 CHARLOTTE DR.
EAST GREENWICH, RI 02818

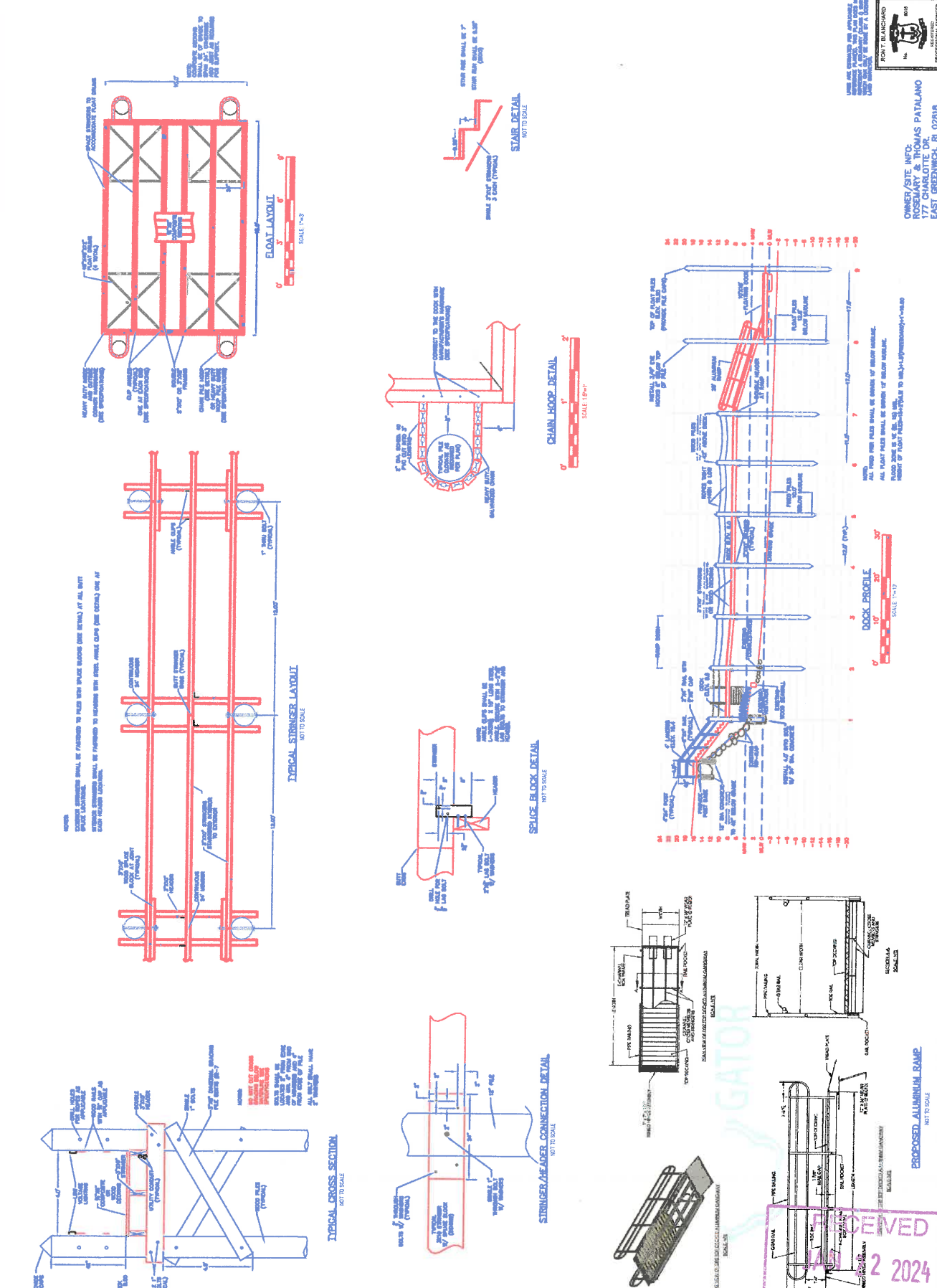
SITE ENGINEERING INC.
CIVIL • GEOTECH • STRUCTURAL
78 ROAD STREET
PROVIDENCE, RI 02908
(401) 855-0801

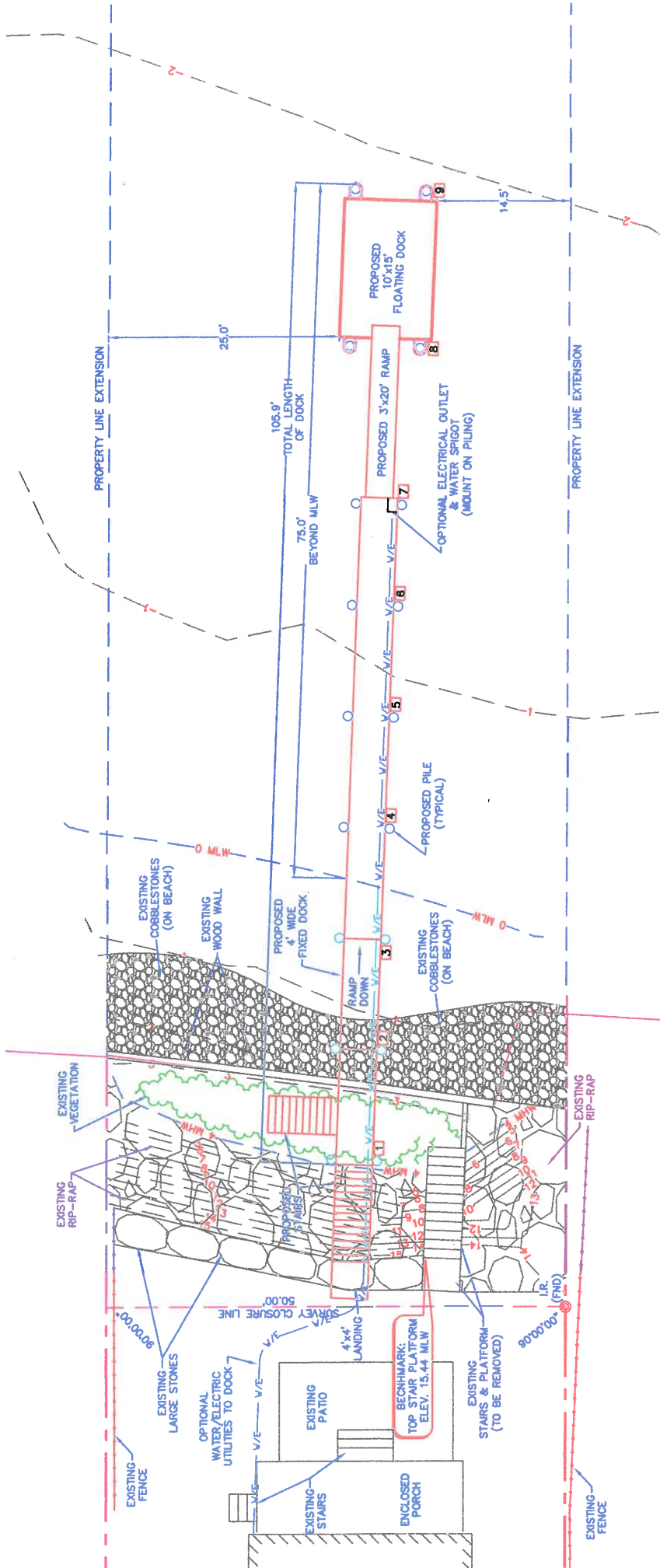
SEI

DATE: 12/20/23
G.W. RB
O.R. MCF
D.S.G. RB

REVISIONS

NO.	DESCRIPTION	DATE
1	ISSUED FOR PERMIT	12/20/23
2	REVISION	
3	REVISION	
4	REVISION	
5	REVISION	
6	REVISION	
7	REVISION	
8	REVISION	
9	REVISION	
10	REVISION	
11	REVISION	
12	REVISION	
13	REVISION	
14	REVISION	
15	REVISION	
16	REVISION	
17	REVISION	
18	REVISION	
19	REVISION	
20	REVISION	
21	REVISION	
22	REVISION	
23	REVISION	
24	REVISION	
25	REVISION	
26	REVISION	
27	REVISION	
28	REVISION	
29	REVISION	
30	REVISION	
31	REVISION	
32	REVISION	
33	REVISION	
34	REVISION	
35	REVISION	
36	REVISION	
37	REVISION	
38	REVISION	
39	REVISION	
40	REVISION	
41	REVISION	
42	REVISION	
43	REVISION	
44	REVISION	
45	REVISION	
46	REVISION	
47	REVISION	
48	REVISION	
49	REVISION	
50	REVISION	
51	REVISION	
52	REVISION	
53	REVISION	
54	REVISION	
55	REVISION	
56	REVISION	
57	REVISION	
58	REVISION	
59	REVISION	
60	REVISION	
61	REVISION	
62	REVISION	
63	REVISION	
64	REVISION	
65	REVISION	
66	REVISION	
67	REVISION	
68	REVISION	
69	REVISION	
70	REVISION	
71	REVISION	
72	REVISION	
73	REVISION	
74	REVISION	
75	REVISION	
76	REVISION	
77	REVISION	
78	REVISION	
79	REVISION	
80	REVISION	
81	REVISION	
82	REVISION	
83	REVISION	
84	REVISION	
85	REVISION	
86	REVISION	
87	REVISION	
88	REVISION	
89	REVISION	
90	REVISION	
91	REVISION	
92	REVISION	
93	REVISION	
94	REVISION	
95	REVISION	
96	REVISION	
97	REVISION	
98	REVISION	
99	REVISION	
100	REVISION	





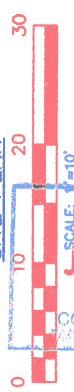
REFERENCE PLAN:
PLAN OF LAND

ASSESSORS PLAT 201 LOT 56
WARWICK, RHODE ISLAND
PREPARED FOR: THOMAS PATALANO, JR.
PREPARED BY: ALPHA ASSOCIATES, LTD.
DATED: JULY 2006

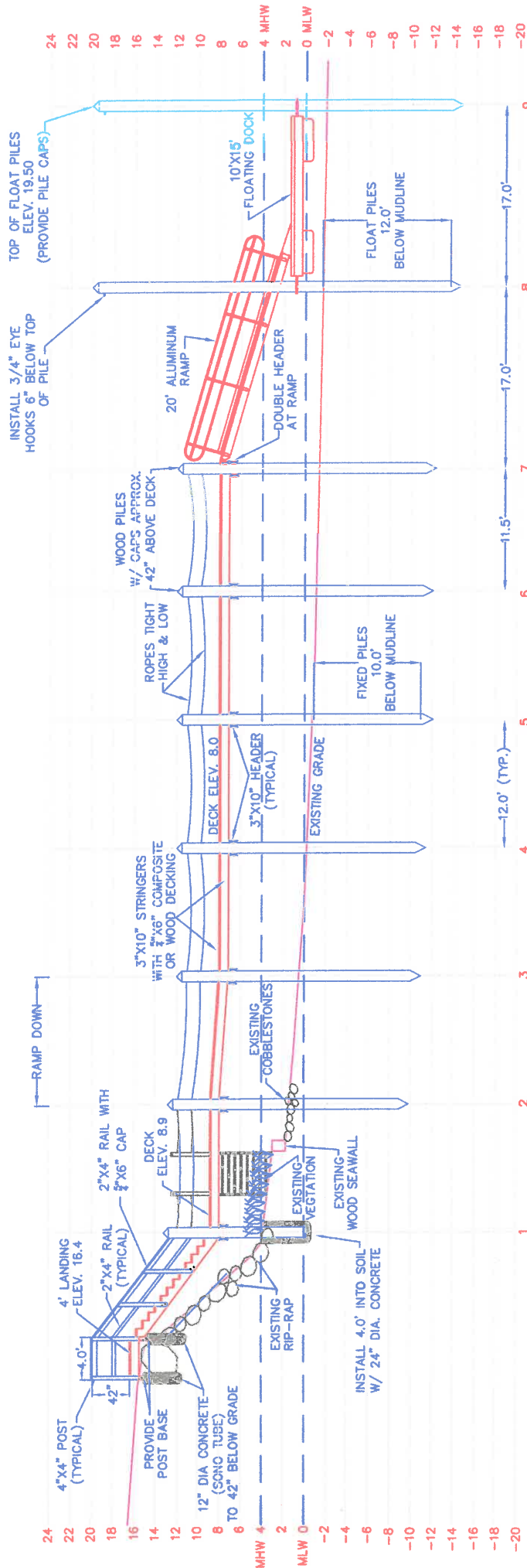
LEGEND

- PROPERTY LINE EXTENSION
- - - EXISTING CONTOUR
- - - MLW (MEAN LOW WATER)
- - - MHW (MEAN HIGH WATER)
- - - PROPOSED WATER ELECTRICAL SERVICE
- ⊙ IRON ROD

SITE PLAN



OWNER/SITE INFO:
ROSEMARY & THOMAS PATAL
177 CHARLOTTE DR.
EAST GREENWICH, RI 02818



NOTE:
ALL FIXED PIER PILES SHALL BE DRIVEN 10' BELOW MUDLINE.

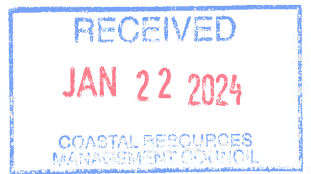
ALL FLOAT PILES SHALL BE DRIVEN 12' BELOW MUDLINE.

FLOOD ZONE IS VE (EL 15) MSL.
HEIGHT OF FLOAT PILES=15+2'(MLW TO MSL)+1.5'(FREEBOARD)+1'=19.50

DOCK PROFILE



SCALE: 1"=10'



GENERAL SPECIFICATIONS:

IN THE EVENT THAT ANY PILE PENETRATION CANNOT BE ATTAINED THE CONTRACTOR SHALL CONTACT THE DESIGN ENGINEER. FOR ANY LOCATION WHERE PILE DEPTH CAN NOT BE ACHIEVED THE CONTRACTOR SHALL RECORD THOSE LOCATIONS AND SUBMIT RECORDS TO THE DESIGN ENGINEER.

ALL WOOD PILINGS SHALL BE 12" DIAMETER SOUTHERN PINE WITH A MINIMUM TIP DIAMETER OF 8". MINIMUM PILE DIAMETER AT MUDLINE SHALL BE 10". PRESSURE TREATMENT SHALL BE 2.5 LB/CF CCA. PILES SHALL BE DRIVEN TO DEPTHS AS INDICATED ON THE PLAN. PILES MAY BE DRIVEN USING A VIBRATORY HAMMER AS LONG AS THE MINIMUM PILE PENETRATION CAN BE ATTAINED.

ALL OTHER STRUCTURAL MEMBERS SHALL BE SOUTHERN PINE OR EQUIVALENT. MINIMUM TREATMENT FOR CROSS BRACING SHALL BE 2.5 LB/CF OF CCA. DIAGONAL BRACING SHALL NOT BE CUT BELOW THE MHW LINE. ALL CUTTING OF SUCH MEMBERS SHALL BE DONE ON THE END ABOVE MHW. FOR ALL OTHER MEMBERS (STRINGERS, HEADERS, WOOD DECKING AND ANY POST OR RAILS) TREATMENT SHALL BE 0.6 LB/CF CCA.

ALL METAL CONNECTION MATERIALS SHALL BE HOT DIPPED GALVANIZED. BOLTS SHALL BE A MINIMUM OF 36KSI STEEL. ALL BOLTED CONNECTIONS FOR HEADERS AND BRACING MEMBERS SHALL BE LOCATED A MINIMUM OF 4" FROM THE END OF THE MEMBER, AND 2" FROM THE EDGE OF THE MEMBER. MEMBERS THAT ARE SPLIT OR CRACKED IN THE AREA OF THE BOLT LOCATION SHALL NOT BE USED. FOR ALL 1" BOLTS PROVIDE 2" WASHERS BOTH SIDES.

DECKING FOR FIXED DOCK SHALL BE ¾"x6" COMPOSITE. ALTERNATIVELY 2X6 MEMBERS CAN BE USED. FASTENERS FOR DECKING SHALL BE 2½" STAINLESS STEEL SCREWS TWO AT EACH ATTACHMENT LOCATIONS.

FLOATING DOCK SHALL BE OF WOOD CONSTRUCTION AND HAVE APPROXIMATELY 18" FREEBOARD AND 6" DRAFT. DECKING SHALL BE ¾"x6" COMPOSITE. FLOATING DOCKS SHALL HAVE HEAVY DUTY INSIDE AND OUTSIDE CORNER HARDWARE AT EACH CORNER LOCATION (FOLLANSBEE WD-E AND WD-IN OR EQUAL). ANGLE CLIPS (FOLLANSBEE RWD-A OR EQUAL) SHALL BE PROVIDED FOR INTERIOR STRUCTURAL MEMBERS AS INDICATED. CLIPS SHALL BE FASTENED USING 2"x3/8" GALVANIZED LAG BOLTS INTO EACH CONNECTING MEMBER.

FLOAT DRUMS SHALL BE FOAM FILLED POLYTHYLENE WITH UV INHIBITORS AND SHALL HAVE STRUCTURAL MOUNTING FLANGES. DESIGN IS BASED ON FLOAT DRUMS AS MANUFACTURED BY "CUSTOM FLOATS." ANY PROPOSED SUBSTITUTES SHALL BE APPROVED BY THE DESIGN ENGINEER.

SECURE FLOAT DRUMS AT ALL EDGES IN CONTACT WITH STRUCTURAL MEMBERS. FOLLOW MANUFACTURES SPECIFICATIONS. ¾" LAG BOLTS WITH 1½" WASHERS AND 1" PENETRATOR INTO STRUCTURAL MEMBER SHALL BE A REQUIRED MINIMUM. WHERE TWO DRUMS MEET ON THE SAME STRUCTURAL MEMBER, USE ONE FASTENER FOR EACH DRUM.

PILE HOLDERS FOR FLOATING DOCK PILES SHALL BE HEAVY DUTY GALVANIZED, CHAIN TYPE FOR USE WITH 12" PILINGS (FOLLANSBEE PH-C OR EQUAL). PLACEMENT OF ALL PILES SHALL BE SO AS TO ALLOW FLOAT TO BE TIED OFF FROM PILINGS SUCH THAT NO CONTACT WITH PILINGS OCCURS.

AS AN ALTERNATIVE, PILE HOLDERS FOR FLOATING DOCK MAY BE HEAVY DUTY GALVANIZED, SINGLE ROLLER TYPE FOR USE WITH 12" PILINGS (FOLLANSBEE PH-H14R OR EQUAL). PLACEMENT OF ALL PILES SHALL BE SO AS TO ALLOW MOVEMENT OF THE FLOAT TO AVOID EXCESSIVE RUBBING OF HOOPS.

SECURE PILE HOLDERS TO FLOATING DOCK WITH 4-½" THROUGH BOLTS (IN HORIZONTAL DIRECTION) AND 4-¾" LAG BOLTS (VERTICAL DIRECTION). USE 3"x10" SPLICE BLOCK BEHIND OUTSIDE MEMBER TO PROVIDE ADEQUATE WIDTH FOR FASTENING. USE METAL BACKER PLATES FOR ½" THROUGH BOLTS.

CLEATS SHALL BE PROVIDED FOR FLOATING DOCK, TWO ON EACH SIDE 1' FROM EACH END. CLEAT SIZE SHALL BE 10" (FOLLANSBEE C-10-M OR EQUAL) AND SHALL BE FASTENED TO WOOD MEMBERS USING CLEAT ANGLES.

A VINYL BUMPER STRIP SHALL BE PROVIDED ALONG THE OUTBOARD SIDE OF THE FLOATING DOCK. BUMPER STRIP SHALL BE AS MANUFACTURED BY "FOLLANSBEE" MODEL VRR-2 OR EQUAL.

RAMP SHALL BE ALUMINUM AND CONSTRUCTION SHALL BE BY MANUFACTURER REGULARLY ENGAGED IN THE TRADE. RAMP SHALL BE CONNECTED TO FIXED PORTION OF DOCK AS RECOMMENDED BY MANUFACTURER. ROLLER ASSEMBLY AT FLOATING DOCK SHALL BE 2" DIAMETER BY 6" WIDE SMALL ROLLER TYPE. INSTALL PLASTIC OR METAL SHEET TO DECK, FOR ROLLERS.

UTILITY SPECIFICATIONS:

ALL UTILITY WORK SHALL BE PERFORMED BY LICENSED CONTRACTORS IN THEIR RESPECTIVE TRADES. ALL WORK SHALL MEET REQUIREMENTS OF THE CURRENT STATE BUILDING CODES.

ELECTRICAL WIRE SHALL BE SIZED BY THE ELECTRICAL CONTRACTOR. WIRE SHALL BE ENCASED IN PVC CONDUIT SUITABLE FOR MARINE APPLICATION. INSTALL EXTERIOR-TYPE, MARINE GRADE, DOUBLE RECEPTACLE AT END OF PIER AS INDICATED.

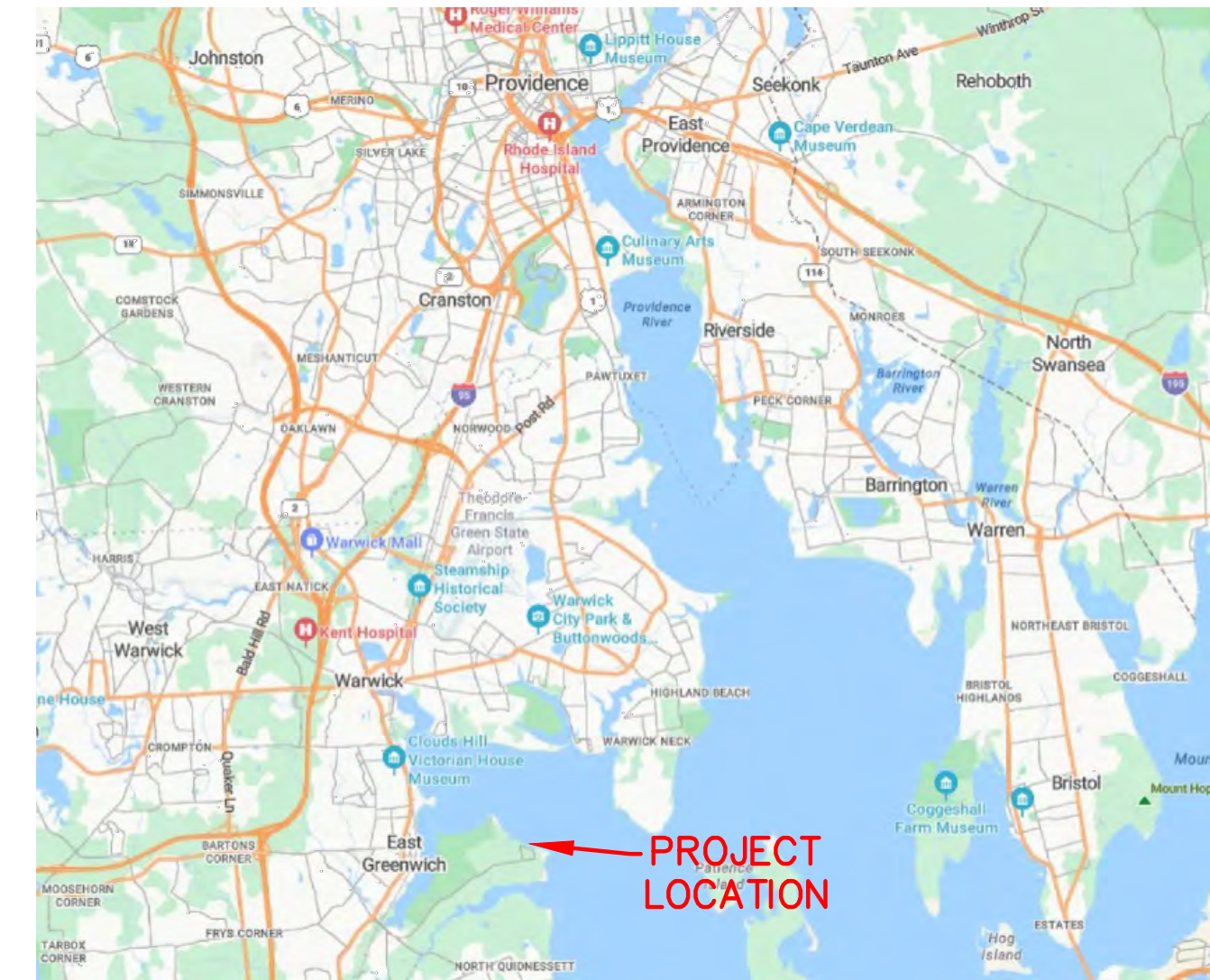
WATER LINE SHALL BE ¾" POLYTHYLENE TUBING AS MANUFACTURED BY "AQUAPEX" OR EQUAL. INSTALL SUITABLE BACKFLOW PREVENTER AT EITHER EXISTING DWELLING OR PIER HEAD AS REQUIRED BY CODE. PROVIDE DRAIN AT PIER HEAD TO ALLOW REMOVAL OF WATER FROM THE LINE DURING THE WINTER MONTHS. INSTALL SPIGOT AT END OF PIER AS INDICATED.

ELECTRIC/WATER UTILITY LINES SHALL BE CONNECTED AT EXISTING DWELLING. LINES SHALL BE BURIED A MINIMUM DEPTH OF 12" ACROSS EXISTING LAWN AREA. UTILITIES SHALL BE SECURED TO UNDERSIDE OF PIER AS INDICATED, WITH GALVANIZED METAL FASTENERS EVERY 5' ON CENTER.

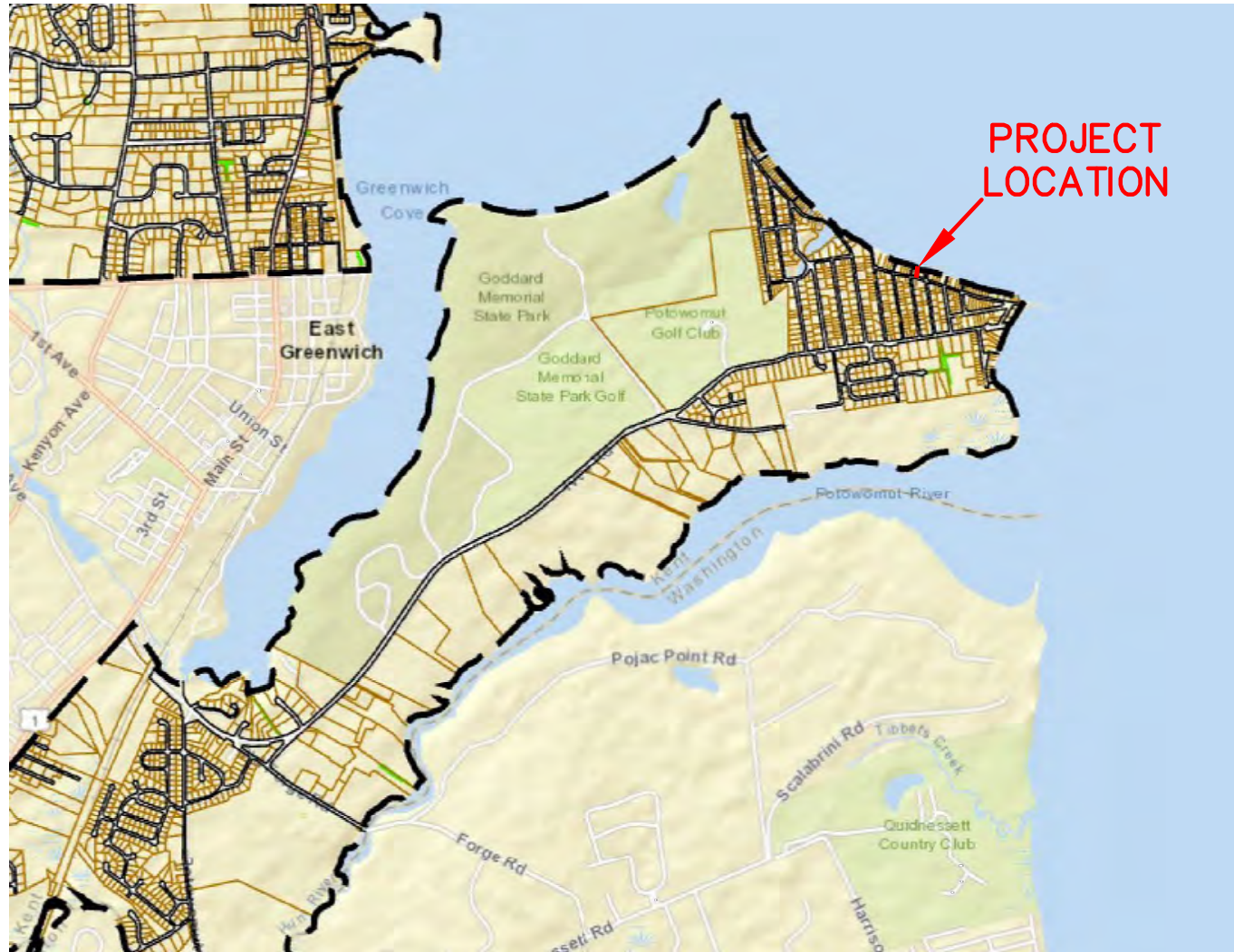
LOW VOLTAGE LIGHTING SHALL BE PROVIDED ALONG THE DOCK AS INDICATED. LIGHTING TYPE TO BE PROPOSED BY CONTRACTOR. INCLUDE LOW VOLTAGE WRING IN ELECTRICAL CONDUIT OR SEPERATE CONDUIT AS REQUIRED BY CODE.



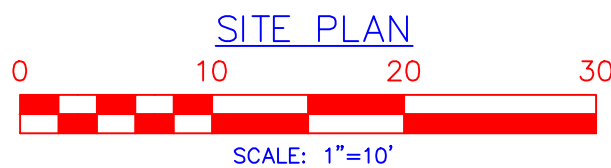
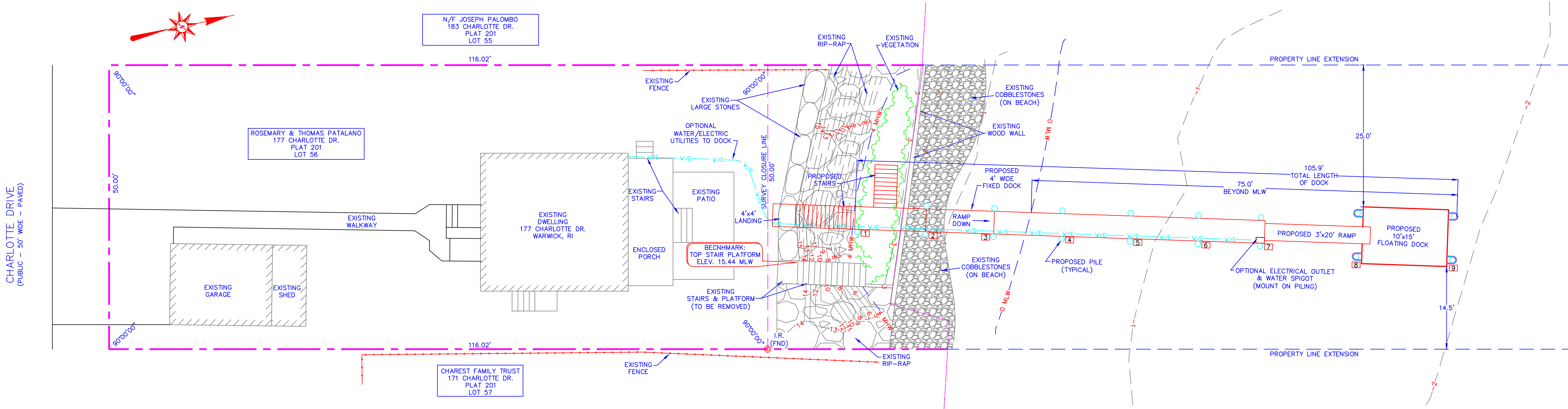
AERIAL PHOTO
SCALE: 1" = 80'±



LOCUS PLAN
NTS



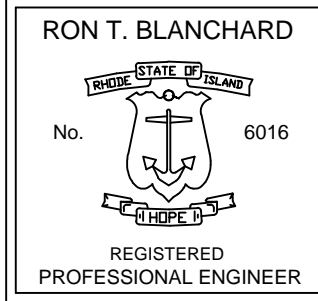
WARWICK, RI PLAT MAP



- LEGEND
- PROPERTY LINE
 - - - PROPERTY LINE EXTENSION
 - - - EXISTING CONTOUR
 - - - MLW (MEAN LOW WATER)
 - - - MHW (MEAN HIGH WATER)
 - - - PROPOSED WATER ELECTRICAL SERVICE
 - ⊙ IRON ROD

REFERENCE PLAN:
PLAN OF LAND
ASSESSORS PLAT 201 LOT 56
WARWICK, RHODE ISLAND
PREPARED FOR: THOMAS PATALANO, JR.
PREPARED BY: ALPHA ASSOCIATES, LTD.
DATED: JULY 2006

DISCLAIMER:
THIS SITE PLAN IS THE RESULT OF A LIMITED TOPOGRAPHIC SURVEY BY SEI. LOT LINES ARE ESTIMATED PER APPLICABLE REFERENCE PLAN(S). THIS PLAN DOES NOT REPRESENT A BOUNDARY (CLASS I) SURVEY, WHICH CAN ONLY BE DONE BY A LICENSED LAND SURVEYOR.



OWNER/SITE INFO:
ROSEMARY & THOMAS PATALANO
177 CHARLOTTE DR.
EAST GREENWICH, RI 02818

NOTES:
ALL MOORINGS FOUND WITHIN 50' OF END OF PROPOSED DOCK HAVE BEEN SHOWN ON PLAN

DATUM:
REFERENCE DATUM IS MEAN LOW WATER

REVISIONS	DATE	DESCRIPTION

DSGN.	RB
DR.	MCF
CHK.	RB
DATE:	12/20/23

SEI
SITE ENGINEERING INC.
CIVIL • COASTAL • STRUCTURAL

75 WOOD STREET
BRISTOL, RI 02809
PHONE: (401) 253-8231

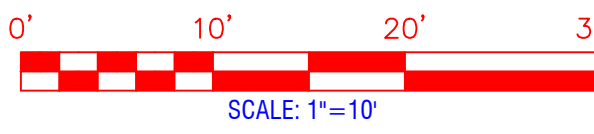
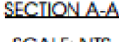
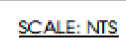
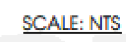
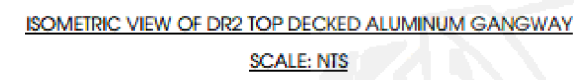
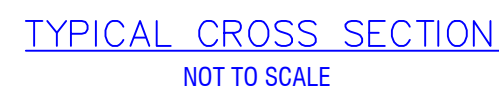
SITE PLAN AND SPECIFICATIONS
RESIDENTIAL BOATING FACILITY
PLAT 201, LOT 56

EAST GREENWICH, 177 CHARLOTTE DR. RHODE ISLAND

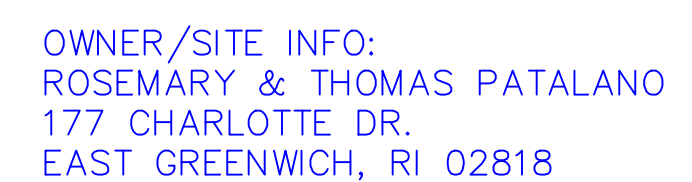
SCALE: AS NOTED
(SHEET 1 OF 2)

DK-1





LINES ARE ESTIMATED PER APPLICABLE
 REFERENCE PLAN(S). THIS PLAN DOES NOT
 REPRESENT A BOUNDARY (CLASS I) SURVEY,
 WHICH CAN ONLY BE DONE BY A LICENSED
 LAND SURVEYOR.



SITE ENGINEERING INC. **SEI**
CIVIL • COASTAL • STRUCTURAL

PLAT 201, LOT 56
EAST GREENWICH, 177 CHARLOTTE DR

SCALE: AS NOTED
(SHEET 1 OF 2)

DK-2

RECEIVED
1/22/2024
COASTAL RESOURCES
MANAGEMENT COUNCIL