



US Army Corps
of Engineers ®
New England District

Fact Sheet

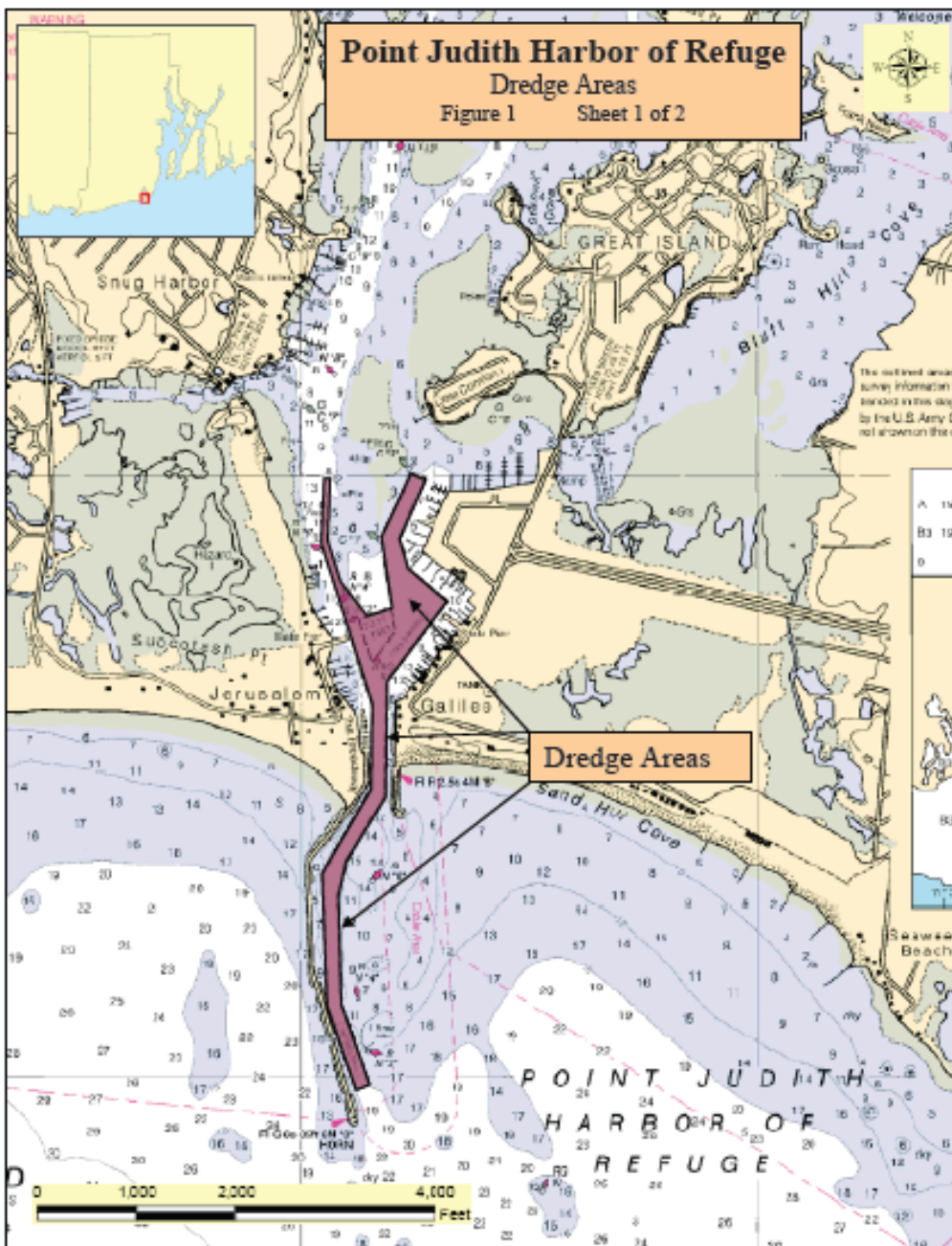
Maintenance Dredging of the Harbor of Refuge Federal Navigation Project, Point Judith, Rhode Island

November 2006

696 Virginia Road, Concord, Massachusetts 01742-2751

Project Description: The proposed work involves maintenance dredging of the 15-foot-deep Mean Lower Low Water (MLLW) entrance channel leading into the harbor; as well as the east and west branch 15-foot-deep MLLW channels and the six-foot deep MLLW channel extending approximately four miles up through

Point Judith Pond. The Harbor of Refuge federal navigation project was originally authorized by the River & Harbor Act of 1890, and further modified in 1892, 1902, 1905, 1907, 1910, 1919, 1948, 1961, 1962, and 1976. (See map below).



Character and Purpose of Work:

Natural shoaling processes in the 15-foot-deep entrance channel, the east and west branch channels, and the six-foot-deep channel in Point Judith Pond have reduced available depths, making navigation hazardous at lower stages of the tide. Maintenance dredging of approximately 90,000 cubic yards (cy) of sand from approximately 25 acres of the authorized project area will restore the entrance channel, east and west branch channels, and shoal areas in Point Judith Pond to authorized dimensions. Dredging will be performed by a mechanical dredge and the dredged material (consisting of clean sand) will be disposed of as a

beneficial use in a near-shore feeder bar off the Matunuck beaches in South Kingstown (approximately three miles west of the harbor).

The dredging contract was awarded to Newborn Construction, Inc., out of Center Moriches, New

York. Dredging is expected to commence mid to late December and needs to be completed by March 15, 2007 at the close of the allowable dredging window.

