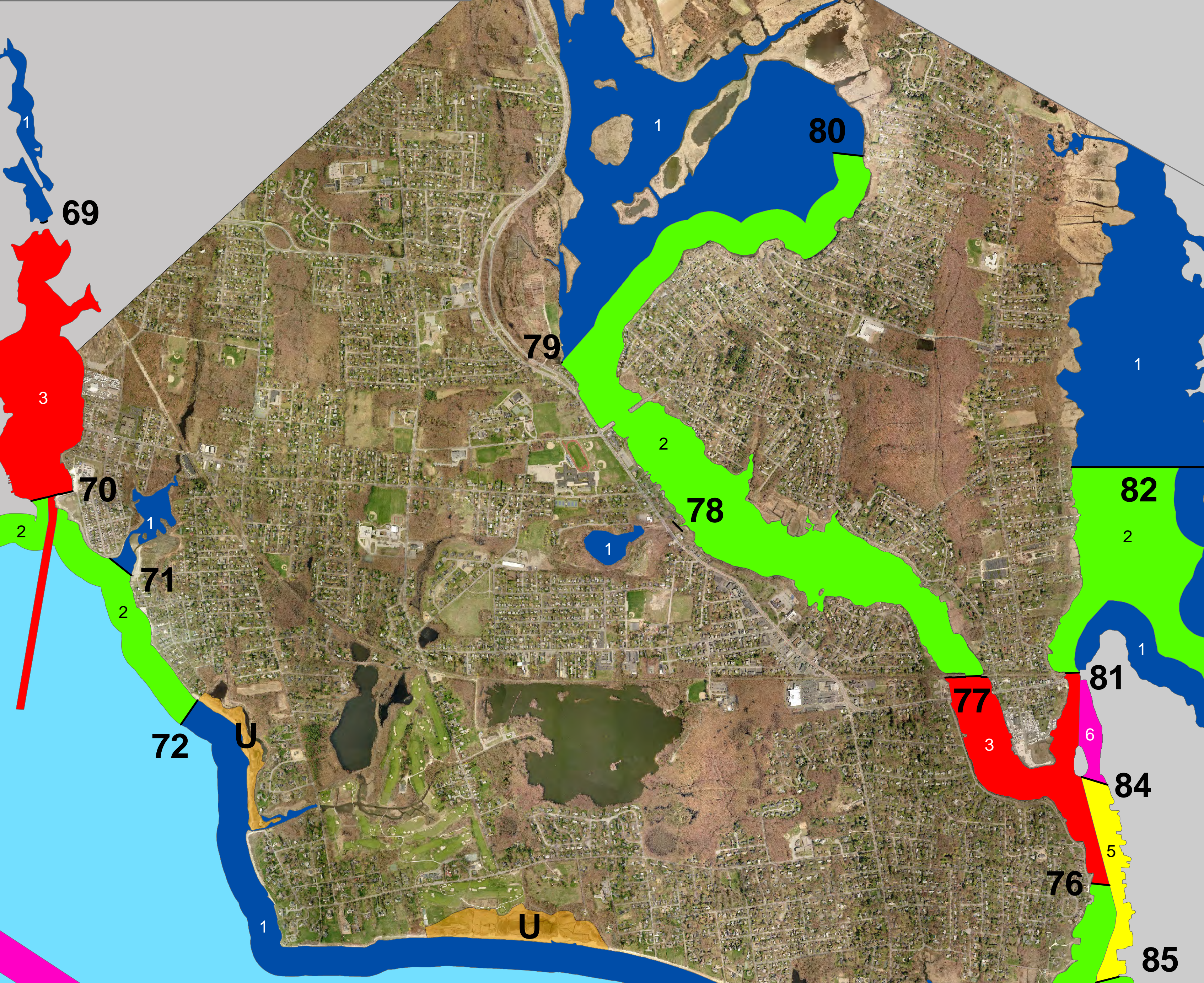
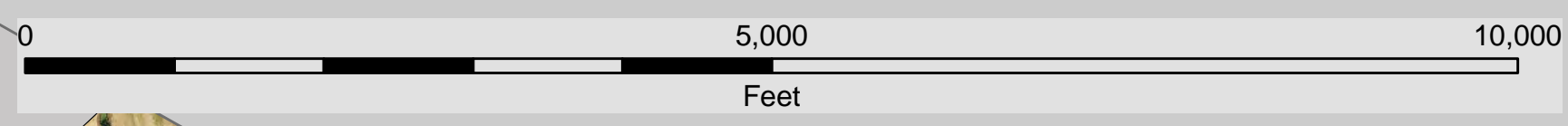


Barrington Water Type Classification



Legend

- water type boundary

CRMC Water Type Classification

- 1 Conservation Areas
- 2 Low Intensity Use
- 3 High Intensity Boating
- 4 Multi Purpose Waters
- 5 Recreational and Commercial Harbors
- 6 Industrial Waterfronts and Commercial Navigation Channels

CRMC Barriers

- D - developed
- M - moderately developed
- U - undeveloped
- coastal wetlands in Type 3-6 waters designated for preservation