

NARRAGANSETT BAY, RHODE ISLAND: Jamestown, Cranston Cove

SHORELINE CHANGE 1939-2003

Rachel E. Hehre and Jon C. Boothroyd

EXPLANATION

DIGITAL SHORELINE ANALYSIS

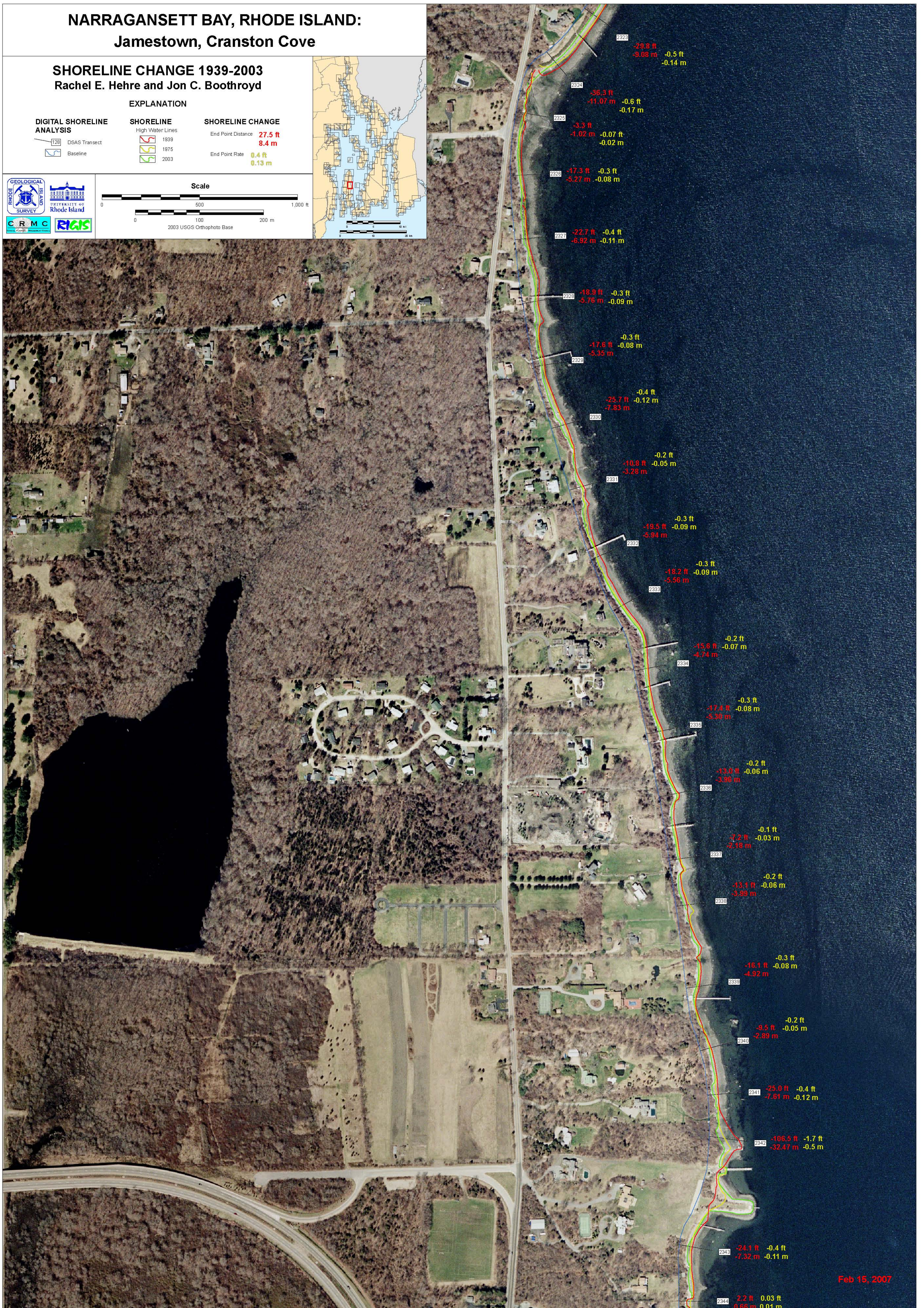
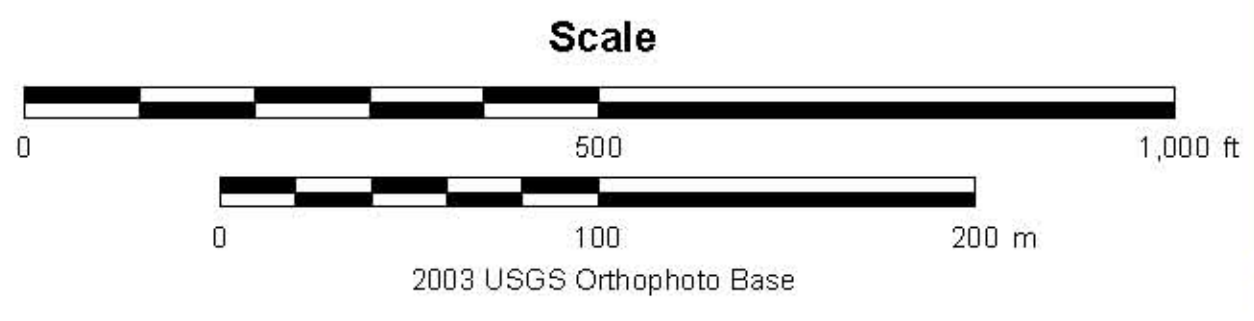
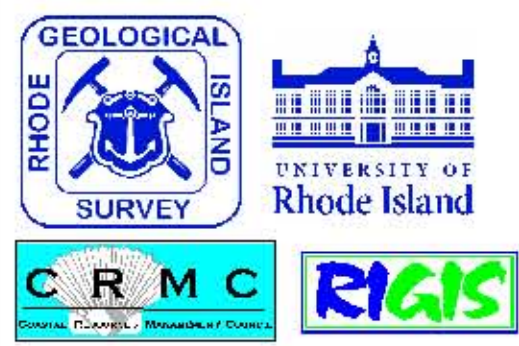
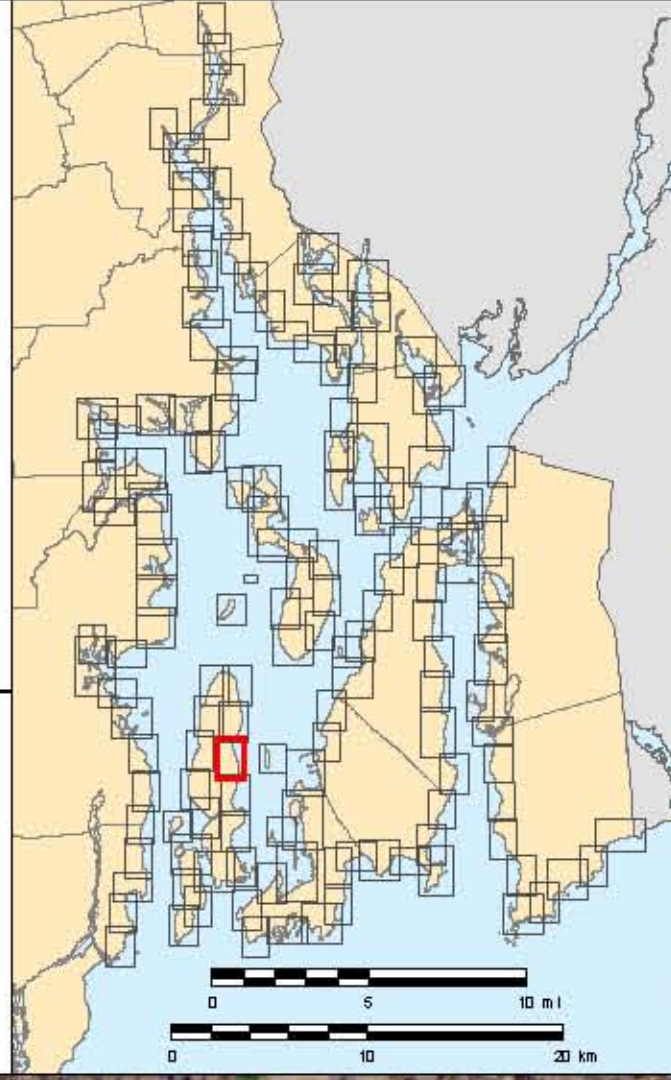
- DSAS Transect
- Baseline

SHORELINE

- High Water Lines
- 1939
- 1975
- 2003

SHORELINE CHANGE

- End Point Distance **27.5 ft**
8.4 m
- End Point Rate **0.4 ft**
0.13 m



Feb 15, 2007