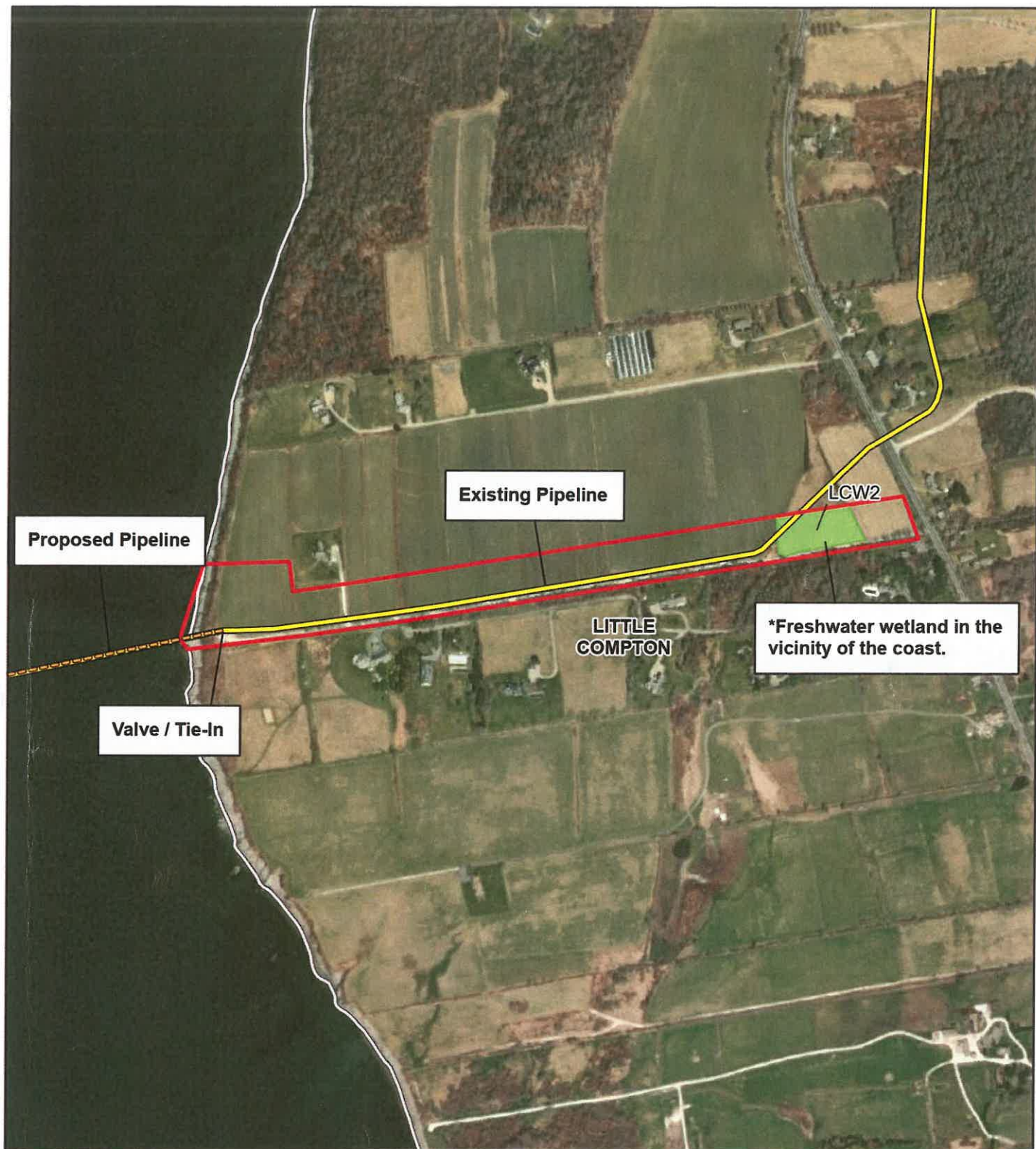


APPENDIX A

Mapping

Copyright © 2000 by the American
Geographical Society
Date: 1-1-00
State: Maine
County: Cumberland
Town: Bethel
Assessor: [illegible]



**G-2 NATURAL GAS PIPELINE
MAINTENANCE PROJECT**
NATURAL RESOURCE DELINEATION MAP
EAST BANK
TIVERTON QUADRANGLE
LITTLE COMPTON, RI

- Existing Pipeline
- Proposed Pipeline
- Delineated Wetland Area
- Project Area
- Municipal Boundary

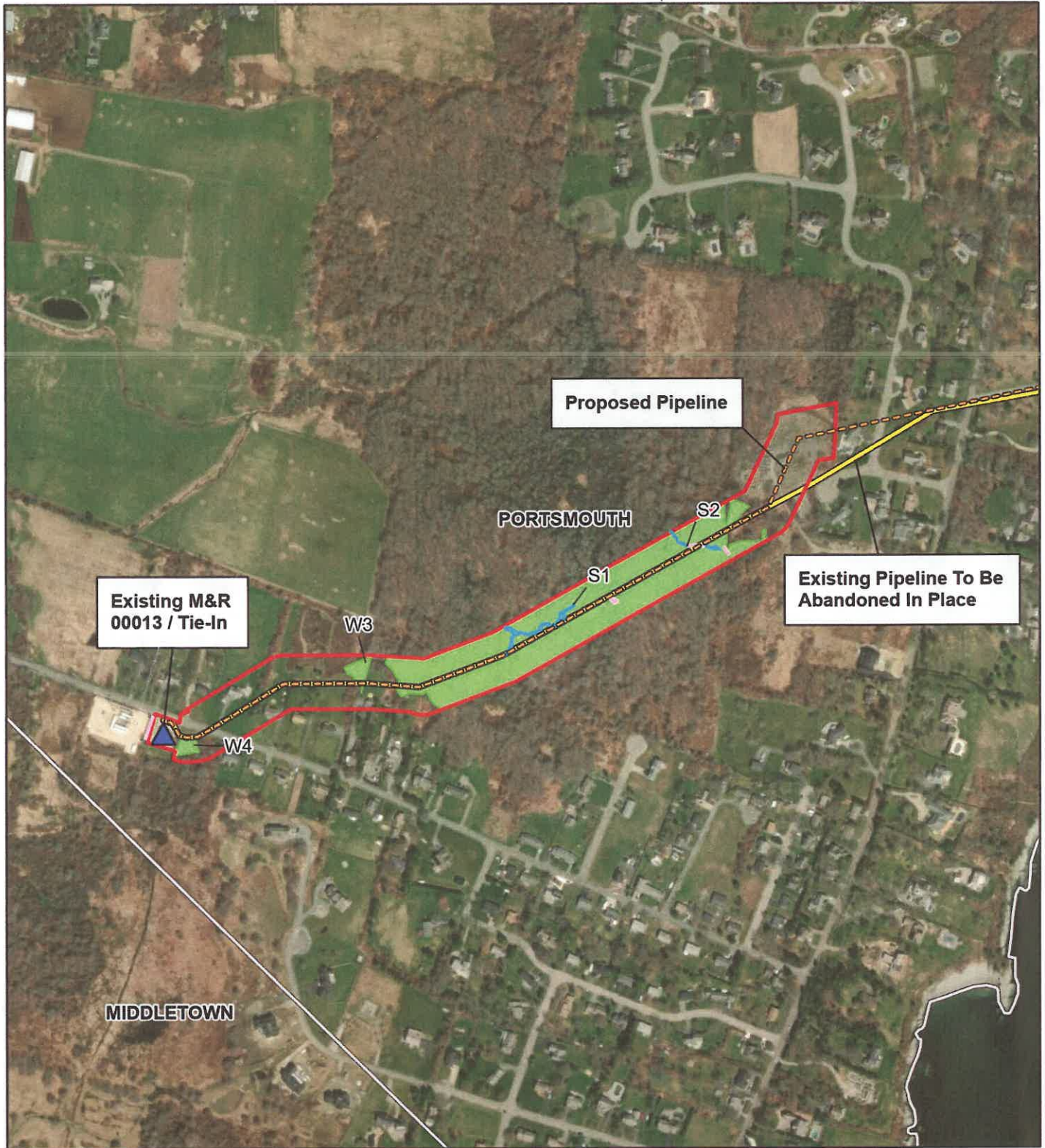


SWCA
ENVIRONMENTAL CONSULTANTS

1:7,200

Created By: S. McInerney
Project Number: 08120
Date: 9/16/2013
NAD 1983 2011 StatePlane Rhode Island FIPS 3800 PLUS





G-2 NATURAL GAS PIPELINE MAINTENANCE PROJECT

**NATURAL RESOURCE DELINEATION MAP
WEST BANK**

**TIVERTON QUADRANGLE
PORTSMOUTH, RI**

- Meter and Regulation Station 00013
- Existing Pipeline
- Proposed Pipeline
- Surface Flow; Ditch; Drainage
- Stream Area
- Delineated Wetland Area
- Project Area
- Municipal Boundary



SWCA
ENVIRONMENTAL CONSULTANTS

1:6,000

Created By: J. MacInnes
Project Number: 00013
Date: 6/10/2010
Map 1008 2011 Data/Plan/Photo/Map PPS 3000 P.1/3








**G-2 NATURAL GAS PIPELINE
MAINTENANCE PROJECT**

USGS TOPOGRAPHIC MAP

**TIVERTON QUADRANGLE
PORTSMOUTH AND LITTLE COMPTON, RI**

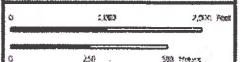
-  Meter and Regulation Station 00013
-  Pipeline
-  Project Area



SWCA
ENVIRONMENTAL CONSULTANTS

1:24,000

Compiled by: S. H. H. H.
Project Number: 68-136
Date: 8/31/2023
NAD 1983 2011 StatePlane Rhode Island FIPS 3302 F.T. U.S.



INSET



LITTLE
COMPTON



G-2 NATURAL GAS PIPELINE
MAINTENANCE PROJECT
NATURAL RESOURCE MAP
EAST BANK
TIVERTON QUADRANGLE
LITTLE COMPTON, RI

- Pipeline
- River 200 Foot Contiguous Area
- Project Area
- Municipal Boundary



SWCA
ENVIRONMENTAL CONSULTANTS

Page: 1 of 2
1:3,600

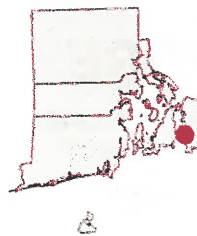
Created By: S. McKinney
Project Number: 68135
Date: 01/14/2015
ARC 10.5.2011 StatePlane Rhode Island FIPS 3800 PL US





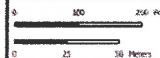
**G-2 NATURAL GAS PIPELINE
MAINTENANCE PROJECT**
**NATURAL RESOURCE MAP
EAST BANK**
TIVERTON QUADRANGLE
LITTLE COMPTON, RI

- Pipeline
- Delineated Wetland Area
- Wetland 100 Foot Contiguous Area
- Buffer Zone (50 feet)
- Project Area
- Municipal Boundary



Page: 2 of 2
1:3,600

Created By: S. MacKenzie
Project Number: 68130
Date: 9/14/2023
NAD 1983 2011 StatePlane Rhode Island FIPS 3800 PI US



INSET



PORTSMOUTH

W3

W1

W4

MIDDLETOWN

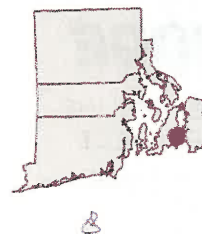


**G-2 NATURAL GAS PIPELINE
MAINTENANCE PROJECT**

**NATURAL RESOURCE MAP
WEST BANK**

**TIVERTON QUADRANGLE
PORTSMOUTH, RI**

- Meter and Regulation Station 00013
- Pipeline
- Surface Flow; Ditch
- Delineated Wetland Area
- Buffer: undeveloped, undisturbed vegetation within Buffer Zone
- Buffer Zone (50 feet)
- Wetland 100 Foot Contiguous Area
- Municipal Boundary
- Temporary Workspace
- Pipeline Right-of-Way



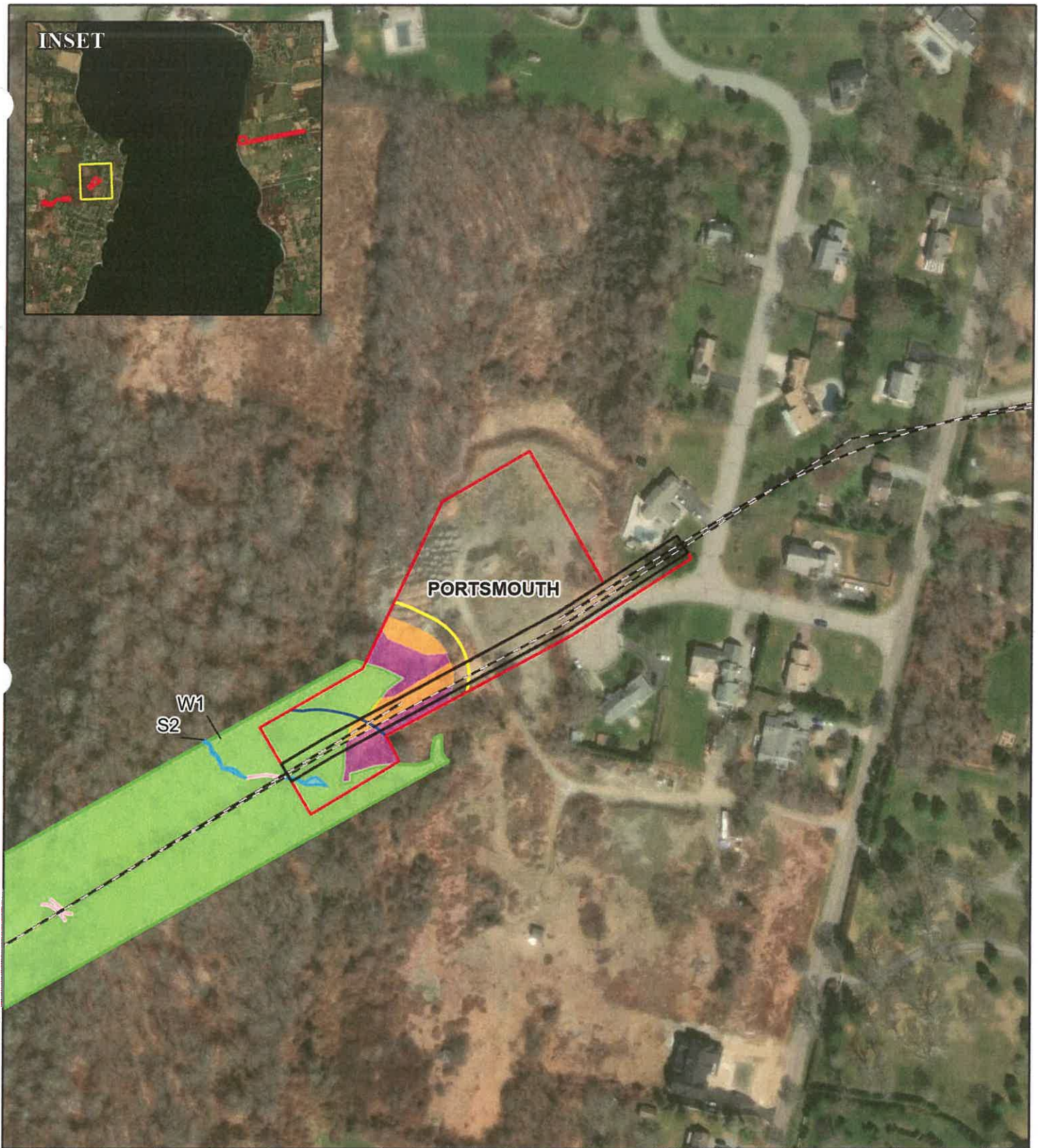
SWCA
ENVIRONMENTAL CONSULTANTS

Page: 1 of 2

1:2,400

Created By: S. McConney
Project Number: 08136
Date: 10/15/2023
RISD 1983-2011 StatePlane Rhode Island FIPS 3800 P US





**G-2 NATURAL GAS PIPELINE
MAINTENANCE PROJECT**
**NATURAL RESOURCE MAP
WEST BANK**
**TIVERTON QUADRANGLE
PORTSMOUTH, RI**

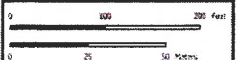
- Pipeline
- Surface Flow; Ditch
- Stream Area
- Delineated Wetland Area
- Buffer: undeveloped, undisturbed vegetation within Buffer Zone
- Buffer Zone (50 feet)
- Stream 100 Foot Contiguous Area
- Wetland 100 Foot Contiguous Area
- Municipal Boundary
- Temporary Workspace
- Pipeline Right-of-Way



SWCA
ENVIRONMENTAL CONSULTANTS

Page: 2 of 2
1:2,400

Created By: S. McKinney
Project Number: 68155
Date: 10/16/2022
RAD: 1083 2011 StatePlane Rhode Island FIPS 3602 R US



Attachment B
Project Drawings

CONSTRUCTION SCOPE OF WORK

CIVIL

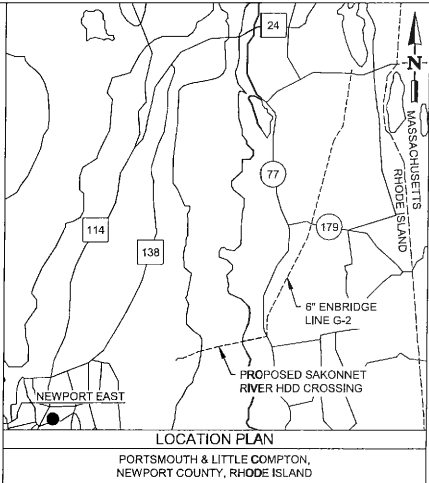
- C1 INSTALL SECURITY FENCE
- C2 CONSTRUCT A LEVEL PLATFORM / GRAVEL WORKING AREA
- C3 EXTEND GRAVEL ACCESS ROAD
- C4 RESTORE ORIGINAL CONDITION AND RE-GRADE SITE

STRUCTURAL

- S1 REMOVE EXISTING SUPPORTS
- S2 INSTALL PROPOSED SUPPORTS

MECHANICAL

- M1 INSTALL PROPOSED 12" G-2 PIPING VIA HDD (UNDER SAKONNET RIVER, APPROX. 7339' PLAN VIEW LENGTH).
- M2 INSTALL 12"x16" SENDING TRAP AND 6"x10" RECEIVING TRAP ON EAST SIDE OF SAKONNET RIVER.
- M3 INSTALL 12" G-2 PIPING VIA OPEN TRENCH IN EXISTING ROW BETWEEN WETLAND HDD AND PORTSMOUTH M&R STATION.
- M4 INSTALL 12"x16" RECEIVING TRAP AT PORTSMOUTH M&R STATION.
- M5 ABANDON EXISTING LINE G-2 PIPELINE BETWEEN THE PORTSMOUTH M&R STATION AND THE NEW TRAP ON THE EAST (LITTLE COMPTON) SIDE WHEN THE EXISTING PORTSMOUTH RECEIVING TRAP OUTAGE IS COMPLETE (APPROX. 9978' PLAN VIEW LENGTH).
- M6 INSTALL PROPOSED 12" G-2 PIPING VIA HDD (UNDER WETLAND AREA, APPROX. 1310' PLAN VIEW LENGTH).
- M7 REMOVE EXISTING, 6" PIPING FROM SERVICE (ABOVE GROUND), CAP AND GROUT PIPELINE IN-PLACE (BELOW GROUND).
- M8 INSTALL 12" G-2 PIPING VIA OPEN TRENCH BETWEEN SAKONNET RIVER HDD ENTRY POINT AND WETLAND HDD EXIT POINT.



LEGEND

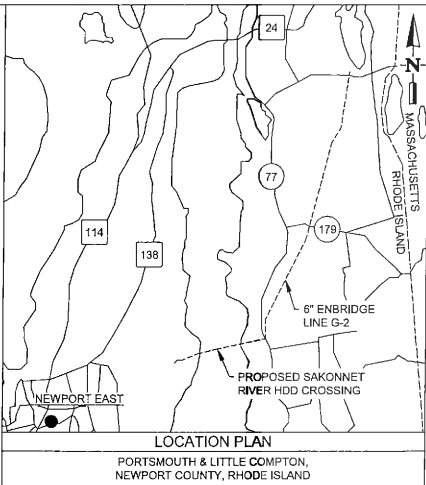
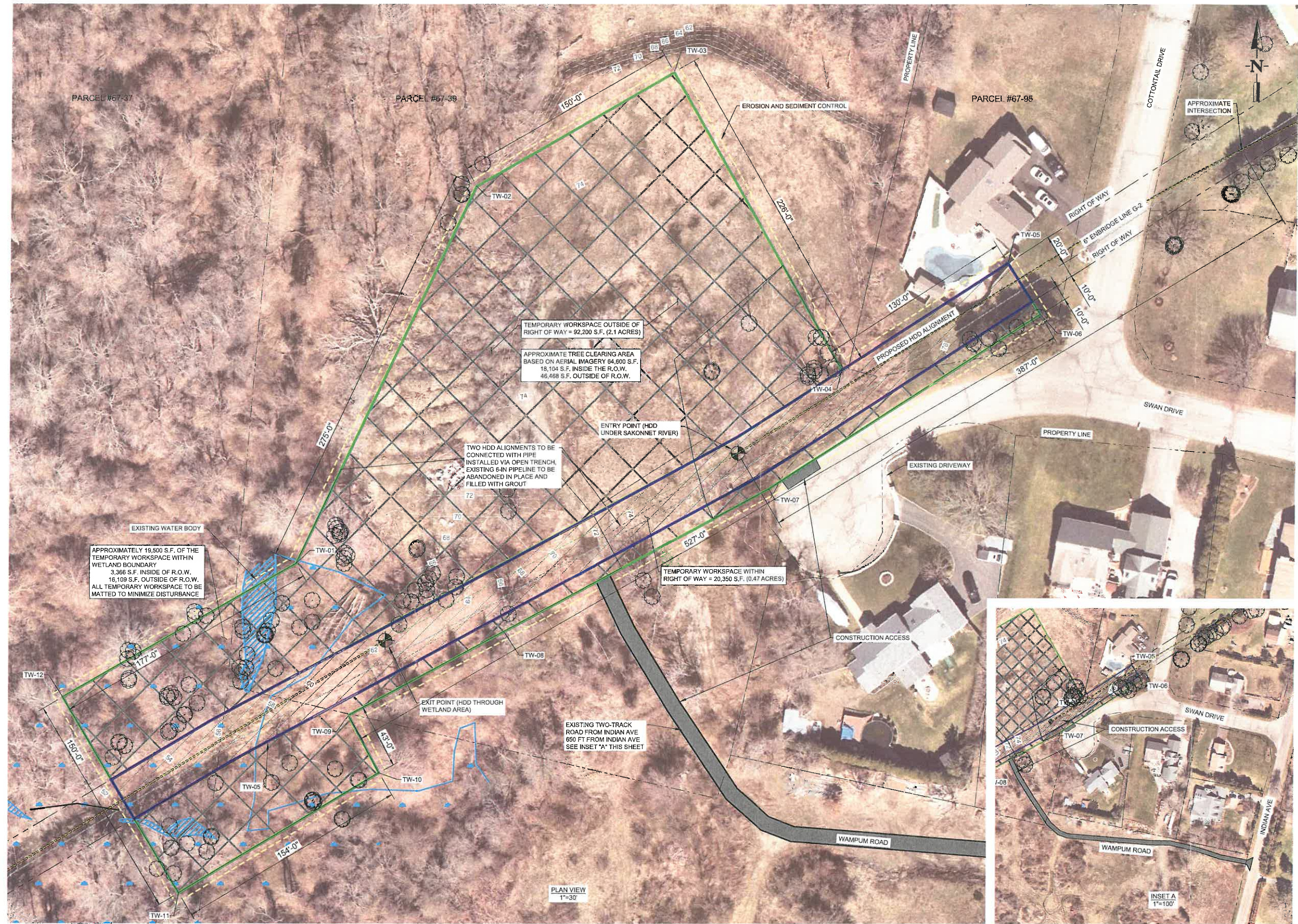
- TEMPORARY WORKSPACE WITHIN THE R.O.W., WORKSPACE IN WETLAND TO BE MATTED
- TEMPORARY WORKSPACE OUTSIDE OF R.O.W., WORKSPACE IN WETLAND TO BE MATTED
- WETLAND AREA
- EXISTING ENBRIDGE LINE G-2
- PROPOSED HDD ALIGNMENTS
- PROPOSED OPEN TRENCH INSTALLATION

REV.	PROJECT TITLE	SEQ #
0.H	SAKONNET RIVER HDD	XXX

REV	REVISION DESCRIPTION	DATE	CHK	APP
0.F	ISSUED FOR 90% REVIEW	2023-06-16	BARR/AFL	O. CANNON
0.G	RE-ISSUED FOR 90% REVIEW	2023-08-31	BARR/AFL	O. CANNON
0.H	RE-ISSUED FOR 90% REVIEW	2023-09-29	BARR/AFL	O. CANNON

0 400 800 1200
1" = 400'-0"

--	--	--	--	--	--	--	--	--	--	--	--	--	--	--	--	--	--	--	--	--	--	--	--	--	--	--	--	--	--	--	--	--	--	--	--	--	--	--	--	--	--	--	--	--	--	--	--	--	--	--	--	--	--	--	--	--	--	--	--	--	--	--	--	--	--	--	--	--	--	--	--	--	--	--	--	--	--	--	--	--	--	--	--	--	--	--	--	--	--	--	--	--	--	--	--	--	--	--	--	--	--	--	--	--	--	--	--	--	--	--	--	--	--	--	--	--	--	--	--	--	--	--	--	--	--	--	--	--	--	--	--	--	--	--	--	--	--	--	--	--	--	--	--	--	--	--	--	--	--	--	--	--	--	--	--	--	--	--	--	--	--	--	--	--	--	--	--	--	--	--	--	--	--	--	--	--	--	--	--	--	--	--	--	--	--	--	--	--	--	--	--	--	--	--	--	--	--	--	--	--	--	--	--	--	--	--	--	--	--	--	--	--	--	--	--	--	--	--	--	--	--	--	--	--	--	--	--	--	--	--	--	--	--	--	--	--	--	--	--	--	--	--	--	--	--	--	--	--	--	--	--	--	--	--	--	--	--	--	--	--	--	--	--	--	--	--	--	--	--	--	--	--	--	--	--	--	--	--	--	--	--	--	--	--	--	--	--	--	--	--	--	--	--	--	--	--	--	--	--	--	--	--	--	--	--	--	--	--	--	--	--	--	--	--	--	--	--	--	--	--	--	--	--	--	--	--	--	--	--	--	--	--	--	--	--	--	--	--	--	--	--	--	--	--	--	--	--	--	--	--	--	--	--	--	--	--	--	--	--	--	--	--	--	--	--	--	--	--	--	--	--	--	--	--	--	--	--	--	--	--	--	--	--	--	--	--	--	--	--	--	--	--	--	--	--	--	--	--	--	--	--	--	--	--	--	--	--	--	--	--	--	--	--	--	--	--	--	--	--	--	--	--	--	--	--	--	--	--	--	--	--	--	--	--	--	--	--	--	--	--	--	--	--	--	--	--	--	--	--	--	--	--	--	--	--	--	--	--	--	--	--	--	--	--	--	--	--	--	--	--	--	--	--	--	--	--	--	--	--	--	--	--	--	--	--	--	--	--	--	--	--	--	--	--	--	--	--	--	--	--	--	--	--	--	--	--	--	--	--	--	--	--	--	--	--	--	--	--	--	--	--	--	--	--	--	--	--	--	--	--	--	--	--	--	--	--	--	--	--	--	--	--	--	--	--	--	--	--	--	--	--	--	--	--	--	--	--	--	--	--	--	--	--	--	--	--	--	--	--	--	--	--	--	--	--	--	--	--	--	--	--	--	--	--	--	--	--	--	--	--	--	--	--	--	--	--	--	--	--	--	--	--	--	--	--	--	--	--	--	--	--	--	--	--	--	--	--	--	--	--	--	--	--	--	--	--	--	--	--	--	--	--	--	--	--	--	--	--	--	--	--	--	--	--	--	--	--	--	--	--	--	--	--	--	--	--	--	--	--	--	--	--	--	--	--	--	--	--	--	--	--	--	--	--	--	--	--	--	--	--	--	--	--	--	--	--	--	--	--	--	--	--	--	--	--	--	--	--	--	--	--	--	--	--	--	--	--	--	--	--	--	--	--	--	--	--	--	--	--	--	--	--	--	--	--	--	--	--	--	--	--	--	--	--	--	--	--	--	--	--	--	--	--	--	--	--	--	--	--	--	--	--	--	--	--	--	--	--	--	--	--	--	--	--	--	--	--	--	--	--	--	--	--	--	--	--	--	--	--	--	--	--	--	--	--	--	--	--	--	--	--	--	--	--	--	--	--	--	--	--	--	--	--	--	--	--	--	--	--	--	--	--	--	--	--	--	--	--	--	--	--	--	--	--	--	--	--	--	--	--	--	--	--	--	--	--	--	--	--	--	--	--	--	--	--	--	--	--	--	--	--	--	--	--	--	--	--	--	--	--	--	--	--	--	--	--	--	--	--	--	--	--	--	--	--	--	--	--	--	--	--	--	--	--	--	--	--	--	--	--	--	--	--	--	--	--	--	--	--	--	--	--	--	--	--	--	--	--	--	--	--	--	--	--	--	--	--	--	--	--	--	--	--	--	--	--	--	--	--	--	--	--	--	--	--	--	--	--	--	--	--	--	--	--	--	--	--	--	--	--	--	--	--	--	--	--	--	--	--	--	--	--	--	--	--	--	--	--	--	--	--	--	--	--	--	--	--	--	--	--	--	--	--	--	--	--	--	--	--	--	--	--	--	--	--	--	--	--	--	--	--	--	--	--	--	--	--	--	--	--	--	--	--	--	--	--	--	--	--	--	--	--	--	--	--	--	--	--	--	--	--	--	--	--	--	--	--	--	--	--	--	--	--	--	--	--	--	--	--	--	--	--	--	--	--	--	--	--	--	--	--	--	--	--	--	--	--	--	--	--	--	--	--	--	--	--	--	--	--	--	--	--	--	--	--	--	--	--	--	--	--	--	--	--	--	--	--	--	--	--	--	--	--	--	--	--	--	--	--	--	--	--	--	--	--	--	--	--	--	--	--	--	--	--	--	--	--	--	--	--	--	--	--	--	--	--	--	--	--	--	--	--	--	--	--	--	--	--	--	--	--	--	--	--	--	--	--	--	--	--	--	--	--	--	--	--	--	--	--	--	--	--	--	--	--	--	--	--	--	--	--	--	--	--	--	--	--	--	--	--	--	--	--	--	--	--	--	--	--	--	--	--	--	--	--	--	--	--	--	--	--	--	--	--	--	--	--	--	--	--	--	--	--	--	--	--	--	--	--	--	--	--	--	--	--	--	--	--	--	--	--	--	--	--	--	--	--	--	--	--	--	--	--	--	--	--	--	--	--	--	--	--	--	--	--	--	--	--	--	--	--	--	--	--	--	--	--	--	--	--	--	--	--	--	--	--	--	--	--	--	--	--	--	--	--	--	--	--	--	--	--	--	--	--	--	--	--	--	--	--	--	--	--	--	--	--	--	--	--	--	--	--	--	--	--	--	--	--	--	--	--	--	--	--	--	--	--	--	--	--	--	--	--	--	--	--	--	--	--	--	--	--	--	--	--	--	--	--	--	--	--	--	--	--	--	--	--	--	--	--	--	--	--	--	--	--	--	--	--	--	--	--	--	--	--	--	--	--	--	--	--	--	--	--	--	--	--	--	--	--	--	--	--	--	--	--	--	--	--	--	--	--	--	--	--	--	--	--	--	--	--	--	--	--	--	--	--	--	--	--	--	--	--	--	--	--	--	--	--	--	--	--	--	--	--	--	--	--	--	--	--	--	--	--	--	--	--	--	--	--	--	--	--	--	--	--	--	--	--	--	--	--	--	--	--	--	--	--	--	--	--	--	--	--	--	--	--	--	--	--	--	--	--	--	--	--	--	--	--	--	--	--	--	--	--	--	--	--	--	--	--	--	--	--	--	--	--	--	--	--	--	--	--	--	--	--	--	--	--	--	--	--	--	--	--	--	--	--	--	--	--	--	--	--	--	--	--	--	--	--	--	--	--	--	--	--	--	--	--	--	--	--	--	--	--	--	--	--	--	--	--	--	--	--	--	--	--	--	--	--	--	--	--	--	--	--	--	--	--	--	--	--	--	--	--	--	--	--	--	--	--	--	--	--	--	--	--	--	--	--	--	--	--	--	--	--	--	--	--	--	--	--	--	--	--	--	--	--	--	--	--	--	--	--	--	--



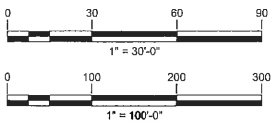
- NOTES:
1. THE ALIGNMENT OF ENBRIDGE PIPELINE G-2 IS APPROXIMATE. FIELD VERIFY ITS LOCATION PRIOR TO WORK.
 2. COORDINATES SHOWN ARE BASED ON RHODE ISLAND STATE PLANES COORDINATE SYSTEM. UNITS IN U.S. SURVEY FOOT.



LEGEND

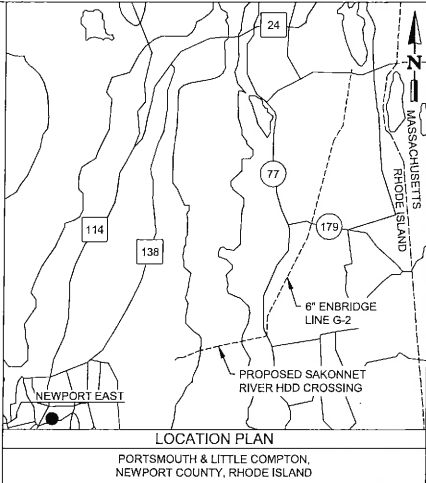
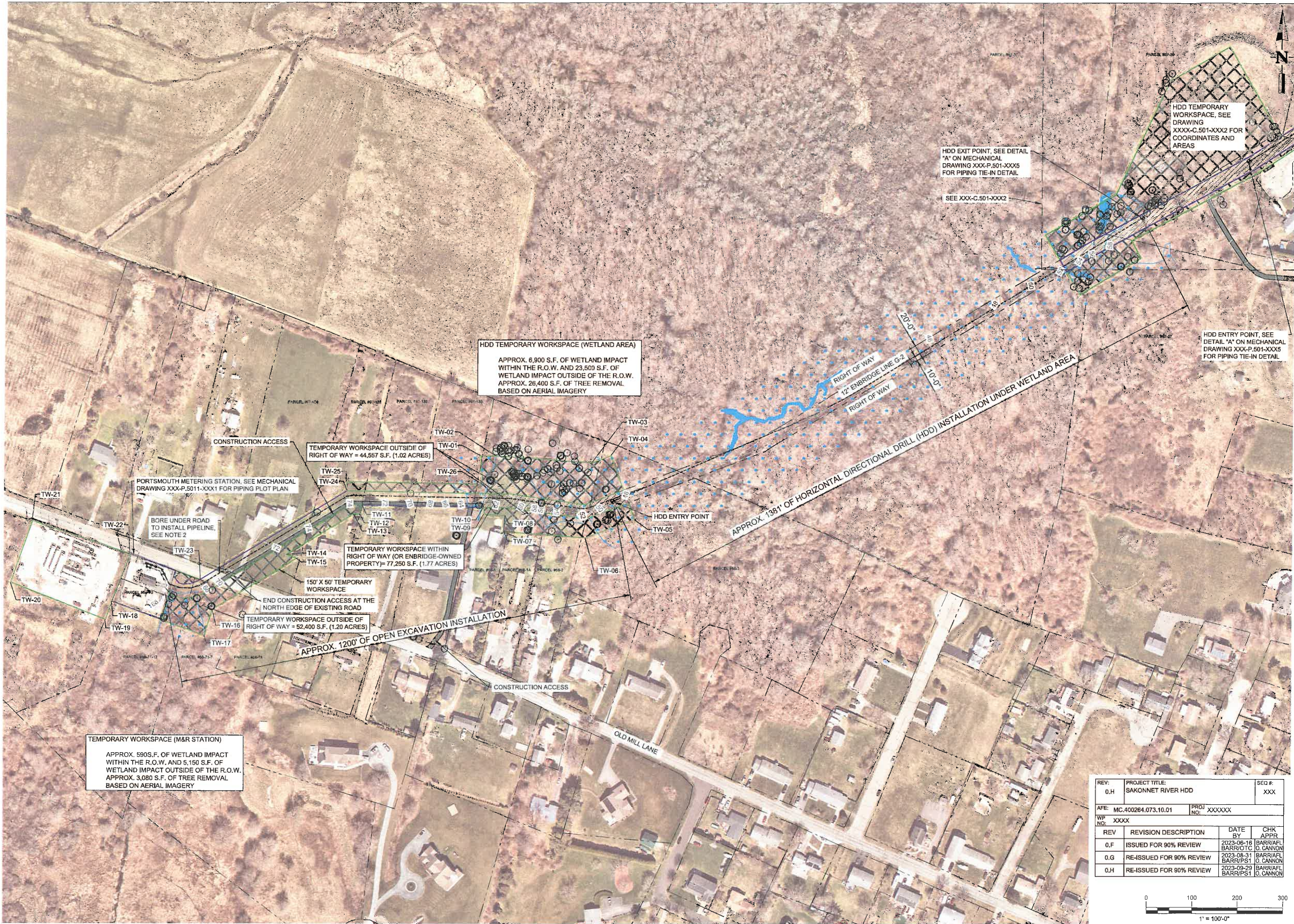
	TEMPORARY WORKSPACE WITHIN THE R.O.W., WORKSPACE IN WETLAND TO BE MATTED
	TEMPORARY WORKSPACE OUTSIDE OF THE R.O.W., WORKSPACE IN WETLAND TO BE MATTED
	EXISTING WETLAND AREA
	EXISTING WATER BODY
	TEMPORARY ACCESS ROUTE
	EXISTING 6-IN ENBRIDGE LINE G-2
	PROPOSED HDD ALIGNMENT
	PROPOSED OPEN TRENCH INSTALLATION
	PROPERTY LINE
	EROSION AND SEDIMENT CONTROL
	EXISTING CONTOUR (SHOWN IN WHITE)
	TREES (TREE SURVEY JUNE 7, 2023)

TEMPORARY WORKSPACE POINTS				
POINT ID	NORTHING	EASTING	LATITUDE	LONGITUDE
TW-01	160928.38	400780.76	N41.524893	W71.234591
TW-02	161176.55	400878.21	N41.525374	W71.234159
TW-03	161251.31	401008.25	N41.525578	W71.233683
TW-04	161055.88	401120.62	N41.525040	W71.233275
TW-05	161126.07	401230.05	N41.525232	W71.232875
TW-06	161092.40	401251.64	N41.525139	W71.232796
TW-07	160977.68	401072.79	N41.524826	W71.233451
TW-08	160883.63	400898.08	N41.524569	W71.234090
TW-09	160828.58	400795.83	N41.524419	W71.234464
TW-10	160790.84	400816.15	N41.524316	W71.234390
TW-11	160711.48	400684.23	N41.524099	W71.234872
TW-12	160840.43	400607.07	N41.524453	W71.235153

REV: 0.H	PROJECT TITLE: SAKONNET RIVER HDD	SEQ #: XXX
AFE: MC.400264.073.10.01	PROJ: XXXXXX	
WP NO: XXXX		
REV	REVISION DESCRIPTION	DATE BY CHK APPR
0.E	ISSUED FOR PERMITTING	2023-06-12 BARR/AFL BARR/OTC O. CANNON
0.F	ISSUED FOR 90% REVIEW	2023-06-16 BARR/AFL BARR/OTC O. CANNON
0.G	RE-ISSUED FOR 90% REVIEW	2023-08-31 BARR/PS1 BARR/PS1 O. CANNON
0.H	RE-ISSUED FOR 90% REVIEW	2023-09-29 BARR/AFL BARR/PS1 O. CANNON



				0.G 2023-08-31 PS1 AFL RE-ISSUED FOR 90% DESIGN		<div><p>Corporate Headquarters: Minneapolis, Minnesota Ph: 1-800-632-2277</p></div>	DRAWN BY: AAB 07-22-2022		CIVIL TEMPORARY WORKSPACE LAYOUT WEST SIDE			<div><p>Algonquin Gas Transmission, LLC 3400 Webster Ct., Houston, TX 77063-2171 / 281-488-4889</p></div>				
				0.F 2023-06-16 OTC AFL ISSUED FOR 90% DESIGN			DESIGN CHECKER: AFL 04-21-2023									
				0.E 2023-06-12 OTC AFL ISSUED FOR PERMITTING			DESIGN ENGINEER: OTC 04-27-2023		TITLE:							
				0.D 2023-04-27 OTC AFL RE-ISSUED FOR 60% REVIEW			PROJECT MANAGER: JUL		LOC.: NEWPORT COUNTY, RHODE ISLAND							
				0.C 2023-01-20 BNM OTC RE-ISSUED FOR 30% REVIEW												
				0.B 2022-07-22 PS1 OTC ISSUED FOR 60% REVIEW												
DWG. NO.		REFERENCE DWG.		REV	DATE	DSN CK	DESCRIPTION	TITLE	INITIALS	DATE	YEAR: 2022	W.O.:	SCALE: AS SHOWN	DWG.:	XXXX-C.502-XXX2	REV.: 0.H

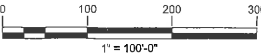




- NOTES:
- THE ALIGNMENT OF ENBRIDGE PIPELINE G-2 IS APPROXIMATE. CONTRACTOR TO FIELD VERIFY ITS LOCATION PRIOR TO WORK.
 - BORE UNDER ROAD TO FOLLOW REQUIREMENTS OF ENBRIDGE DESIGN PROCEDURE DP-PX1.2 (ROAD AND RAILROAD CROSSINGS) FOR UNCAUSED ROAD CROSSINGS. A MINIMUM OF 3FT OF COVER TO BE MAINTAINED UNDER ROAD AND TO EXTEND 3FT BEYOND THE ROAD ROW.

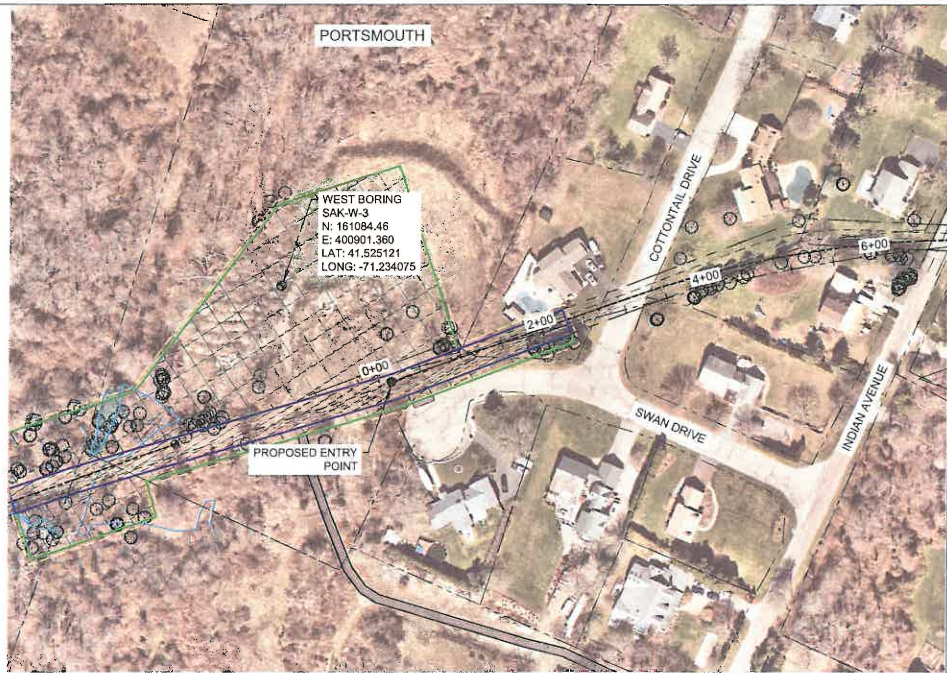
- LEGEND
- TEMPORARY WORKSPACE WITHIN THE R.O.W., WORKSPACE IN WETLAND TO BE MATTED
 - TEMPORARY WORKSPACE OUTSIDE OF THE R.O.W., WORKSPACE IN WETLAND TO BE MATTED
 - WETLAND AREA
 - ENBRIDGE LINE G-2
 - PROPOSED HDD ALIGNMENT
 - OVERHEAD POWER
 - BURIED ELECTRICAL (OR UNKNOWN UTL)
 - EROSION AND SEDIMENT CONTROL
 - EXISTING CONTOUR (SHOWN IN WHITE)
 - TREE (TREE SURVEY COMPLETED JUNE 7, 2023)

TEMPORARY WORKSPACE COORDINATES				
POINT ID	NORTHING	EASTING	LATITUDE	LONGITUDE
TW-01	160358.65	399374.72	N41.523141	W71.239658
TW-02	160358.59	399406.59	N41.523141	W71.239542
TW-03	160343.71	399618.20	N41.523098	W71.238769
TW-04	160359.10	399659.46	N41.523140	W71.238619
TW-05	160220.07	399711.34	N41.522758	W71.238431
TW-06	160180.02	399604.00	N41.522649	W71.238823
TW-07	160193.70	399425.35	N41.522688	W71.239475
TW-08	160228.50	399428.15	N41.522784	W71.239465
TW-09	160231.91	399381.81	N41.522794	W71.239634
TW-10	160246.59	399380.99	N41.522834	W71.239637
TW-11	160251.73	399115.39	N41.522850	W71.240607
TW-12	160231.82	399110.77	N41.522796	W71.240624
TW-13	160232.09	399096.84	N41.522796	W71.240875
TW-14	160143.41	398950.27	N41.522554	W71.241211
TW-15	160135.24	398973.14	N41.522532	W71.241127
TW-16	160023.66	398788.46	N41.522227	W71.241803
TW-17	159966.67	398771.19	N41.522071	W71.241867
TW-18	160040.74	398559.01	N41.522276	W71.242604
TW-19	160001.05	398555.22	N41.522167	W71.242655
TW-20	160082.30	398347.87	N41.522391	W71.243411
TW-21	160216.18	396395.51	N41.522759	W71.243236
TW-22	160144.30	398609.08	N41.522559	W71.242457
TW-23	160088.60	398762.83	N41.522405	W71.241896
TW-24	160282.36	399083.34	N41.522934	W71.240723
TW-25	160302.35	399081.72	N41.522989	W71.240729
TW-26	160296.66	399378.19	N41.522971	W71.239646

REV.	PROJECT TITLE	SEQ. #	
0.H	SAKONNET RIVER HDD	XXX	
AFC: MC.400264.073.10.01 PROJ. NO. XXXXXX			
WP. NO. XXXXX			
REV	REVISION DESCRIPTION	DATE BY	CHK APPR.
0.F	ISSUED FOR 90% REVIEW	2023-06-18 BARR/OT	BARR/AF O. CANNON
0.G	RE-ISSUED FOR 90% REVIEW	2023-08-31 BARR/PS1	BARR/AF O. CANNON
0.H	RE-ISSUED FOR 90% REVIEW	2023-09-29 BARR/PS1	BARR/AF O. CANNON



		0.G	2023-08-31	PS1	AFL	RE-ISSUED FOR 90% REVIEW	<div><div>Corporate Headquarters: Minneapolis, Minnesota Ph: 1-800-632-2277</div></div>	DRAWN BY:	AAB	07-22-2022	CIVIL			<div><div>Alcoquit Gas Transmission, L.L.C. 562 Webster Ct. Boscawen, VT 07004-5713 437-9488</div></div>						
		0.F	2023-06-16	OTC	AFL	ISSUED FOR 90% REVIEW		DESIGN CHECKER:	AFL	04-27-2023	HDD AND OPEN TRENCH PIPELINE INSTALLATION LAYOUT									
		0.E	2023-06-12	OTC	AFL	ISSUED FOR PERMITTING		DESIGN ENGINEER:	OTC	04-27-2023	WEST SIDE									
		0.D	2023-04-27	OTC	AFL	RE-ISSUED FOR 60% REVIEW		PROJECT MANAGER:	JUL	04-27-2023	TITLE:			LOC.: NEWPORT COUNTY, RHODE ISLAND						
		0.C	2023-01-20	BNM	OTC	RE-ISSUED FOR 30% REVIEW					YEAR: 2022			W.O.:		SCALE: AS SHOWN		DWG.:	XXXX-C.502-XXX3	REV.: 0.H
		0.B	2022-07-22	PS1	OTC	ISSUED FOR 60% REVIEW					INITIALS			DATE						
DWG. NO.	REFERENCE DWG.	REV	DATE	DSN	CK	DESCRIPTION		TITLE	INITIALS	DATE	YEAR: 2022	W.O.:		SCALE: AS SHOWN		DWG.:	XXXX-C.502-XXX3	REV.: 0.H		



1 HDD SAKONNET WEST CROSSING PLAN
1"=100'-0"



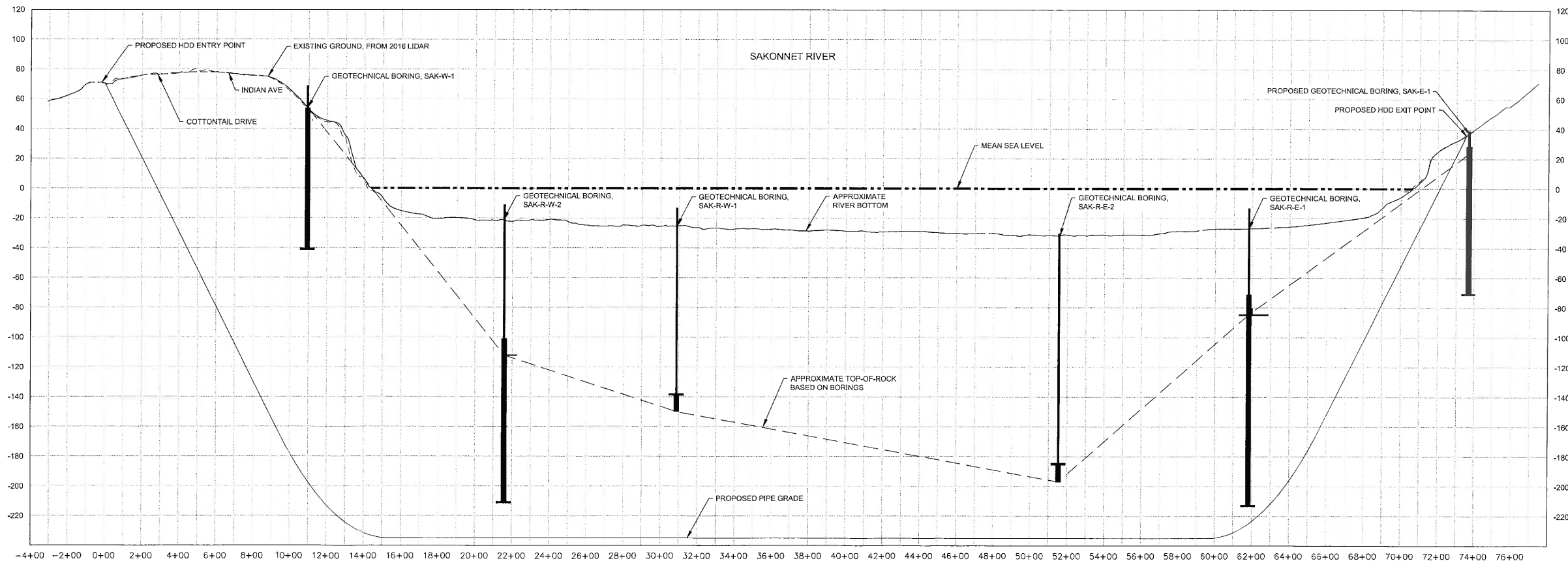
2 HDD SAKONNET EAST CROSSING PLAN
1"=200'-0"

LEGEND:

- APPROXIMATE EXISTING PIPELINE
- PROPOSED HDD ALIGNMENT
- PROPOSED TEMPORARY WORK SPACE
- WETLAND
- PROPERTY LINE

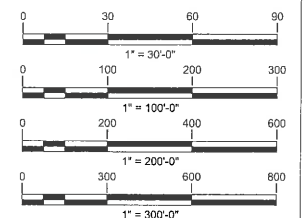
CONSTRUCTION NOTES:

- THIS DRAWING REPRESENTS A GENERAL GRAPHIC SUMMARY OF THE WORK. WORK INCLUDES BUT IS NOT LIMITED TO WHAT IS DESCRIBED. FOR DETAILS REFER TO DRAWINGS AND PROJECT SPECIFICATIONS.
- CONTOURS SHOWN WERE OBTAINED FROM USGS LIDAR SURVEY OBTAINED IN 2011. BATHYMETRIC DATA OF SAKONNET RIVER COLLECTED BY ONYX SERVICES 6/09/2021 TIED TO NAD83 RHODE ISLAND STATE PLANE NAVD88 US SURVEY FOOT. CONTRACTOR TO VERIFY EXISTING CONDITIONS PRIOR TO COMMENCING WORK.
- CONTRACTOR IS RESPONSIBLE FOR ALL WORK UNLESS OTHERWISE NOTED.
- ALL MEASUREMENTS ARE APPROXIMATE. VERIFY ALL DIMENSIONS IN FIELD PRIOR TO CONSTRUCTION.
- POSITIVELY ID ALL UTILITY CROSSINGS PRIOR TO CONSTRUCTION TO VERIFY DEPTHS AND LOCATIONS.
- COORDINATE WITH ENBRIDGE R.O.W. FOR ACCESS TO SITE.
- DO NOT COMMENCE ANY WORK WITHOUT REQUIRED ENBRIDGE PERSONNEL ON SITE.
- WORK SHALL BE IN ACCORDANCE WITH ENBRIDGE SITE PREPARATION AND EARTHWORK SPECIFICATIONS FCS001.
- PROTECT SURVEY CONTROL POINTS. CONTRACTOR IS RESPONSIBLE FOR ESTABLISHING ADDITIONAL CONTROL FOR CONSTRUCTION AND RECORD SURVEY ACTIVITIES.
- DILLED PATH SHOWN REFERS TO CENTERLINE OF PILOT HOLE, AS OPPOSED TO TOP OF INSTALLED PIPE.
- PLACEMENT OF THE DRILL RIG IS NOT FIXED BY THE LOCATION OF THE ENTRY AND EXIT POINTS SHOWN. DRILL RIG PLACEMENT AND DRILLING METHODS ARE AT THE CONTRACTORS OPTION.



3 HDD SAKONNET RIVER CROSSING
HORIZONTAL SCALE: 1"=300'-0"
VERTICAL SCALE: 1"=30'-0"

REV: 0.H	PROJECT TITLE: SAKONNET RIVER HDD	SEQ #: XXX
A/E: MC.400254.073.10.01	PROJ NO: XXXXXX	
WP NO: XXXX		
REV	REVISION DESCRIPTION	DATE BY CHK APPR
0.E	ISSUED FOR PERMITTING	2023-06-12 BARR/PS1 O. CANNON
0.F	ISSUED FOR 90% REVIEW	2023-06-16 BARR/PS1 O. CANNON
0.G	RE-ISSUED FOR 90% REVIEW	2023-08-31 BARR/PS1 O. CANNON
0.H	RE-ISSUED FOR 90% REVIEW	2023-09-29 BARR/PS1 O. CANNON



DWG. NO.	REFERENCE DWG.	REV	DATE	DSN	CK	DESCRIPTION
		0.F	2023-06-16	OTC	AFL	ISSUED FOR 90% REVIEW
		0.E	2023-06-12	PS1	AFL	ISSUED FOR PERMITTING
		0.D	2023-04-27	OTC	AFL	RE-ISSUED FOR 60% REVIEW
		0.C	2023-01-20	BNM	OTC	RE-ISSUED FOR 30% REVIEW
		0.B	2022-07-22	AAB	OTC	ISSUED FOR 60% REVIEW
		0.A	2022-04-15	PSI		ISSUED FOR 30% REVIEW

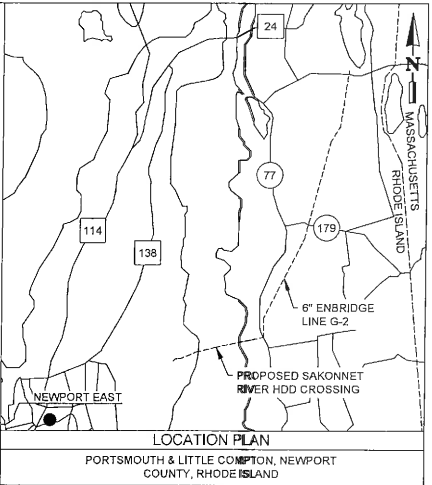


DRAWN BY:	AAB	07-22-2022	CIVIL
DESIGN CHECKER:	AFL	04-27-2023	PLAN AND PROFILE
DESIGN ENGINEER:	OTC	04-27-2023	TITLE:
PROJECT MANAGER:	JLL	04-27-2023	LOC.: NEWPORT COUNTY, RHODE ISLAND
TITLE	INITIALS	DATE	YEAR: 2022
			W.O.: SCALE: AS SHOWN



Algonquin Gas Transmission, LLC
5000 Westheimer, Houston, TX 77056-2019

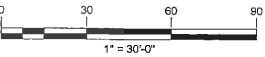
DWG.: XXXX-C.501-XXX6 REV.: 0.H



- NOTES:
- REFER TO ENBRIDGE EPP FOR SITE RESTORATION SEED MIX.
 - THE ALIGNMENT OF ENBRIDGE PIPELINE G-2 IS APPROXIMATE. CONTRACTOR TO FIELD VERIFY ITS LOCATION PRIOR TO WORK.

- LEGEND
- TEMPORARY WORKSPACE WITHIN THE R.O.W.
 - TEMPORARY WORKSPACE OUTSIDE OF THE R.O.W.
 - PROPOSED CONSTRUCTION ACCESS ROUTE
 - ENBRIDGE LINE G-2
 - PROPOSED HDD ALIGNMENT
 - CATHODIC PROTECTION LINE
 - PROPOSED SECURITY FENCE
 - EROSION AND SEDIMENT CONTROL
 - EXISTING CONTOUR (SHOWN IN WHITE)
 - PROPOSED CONTOUR (SHOWN IN BLACK)

REV: 0.H	PROJECT TITLE: SAKONNET RIVER HDD	SEQ #: XXX
AFE: MC.400264.073.10.01	PROJ NO: XXXXXX	
WP NO: XXXX		
REV	REVISION DESCRIPTION	DATE BY CHK APPR
0.D	RE-ISSUED FOR 60% DESIGN	2023-04-27 BARR/AFL O. CANNON
0.E	ISSUED FOR PERMITTING	2023-06-12 BARR/AFL BARR/OTC O. CANNON
0.F	ISSUED FOR 90% REVIEW	2023-06-16 BARR/AFL BARR/OTC O. CANNON
0.G	RE-ISSUED FOR 90% REVIEW	2023-08-31 BARR/AFL BARR/PS1 O. CANNON
0.H	RE-ISSUED FOR 90% REVIEW	2023-08-29 BARR/AFL BARR/PS1 O. CANNON



		0.G	2023-08-31	PS1	AFL	RE-ISSUED FOR 90% REVIEW
		0.F	2023-06-16	OTC	AFL	ISSUED FOR 90% REVIEW
		0.E	2023-06-12	OTC	AFL	ISSUED FOR PERMITTING
		0.D	2023-04-27	OTC	AFL	RE-ISSUED FOR 60% REVIEW
		0.C	2023-01-20	BNM	OTC	RE-ISSUED FOR 30% REVIEW
		0.B	2022-07-22	PS1	OTC	ISSUED FOR 60% REVIEW
DWG. NO.	REFERENCE DWG.	REV	DATE	DSN	CK	DESCRIPTION



DRAWN BY:	AAB	07-22-2022
DESIGN CHECKER:	AFL	04-27-2023
DESIGN ENGINEER:	OTC	04-27-2023
PROJECT MANAGER:	JUL	04-27-2023
TITLE	INITIALS	DATE

CIVIL		
TEMPORARY WORKSPACE LAYOUT		
CLOSE-UP, EAST SIDE		
TITLE:		
LOC.: NEWPORT COUNTY, RHODE ISLAND		
YEAR:	2022	W.O.:
SCALE:	AS SHOWN	

Algonquin Gas Transmission, L.L.C. 5400 Westchester Dr., Houston, TX 77056-5100 713 / 427-3400	
DWG:	XXXX-C.501-XXX5
REV:	0.H



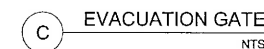
1 SLIDING GATE
NTS
THIS DRAWING



FENCING SPECIFICATION AND MATERIALS

FENCE SHALL BE CONSTRUCTED FROM ASTM F1043 GROUP 1A OR GROUP 1C ROUND STEEL PIPE FRAMING AND CHAIN LINK FABRIC WITH BARBED WIRE OVERHANG. SPECIFIED PIPE DIAMETERS ARE ACTUAL OUTSIDE DIAMETER. FENCE DESIGN AND CONSTRUCTION SHALL BE IN CONFORMANCE WITH ASTM F2611 - STANDARD GUIDE FOR DESIGN AND CONSTRUCTION OF CHAIN LINK SECURITY FENCING IN ADDITION TO THE FOLLOWING MINIMUM REQUIREMENTS:


- | | |
|--------------------------|--|
| 1. HEIGHT: | 7'-0" ABOVE FINISHED GRADE INCLUDING BARBED WIRE OVERHANG. |
| 2. POSTS: | TERMINAL POSTS, CORNER POSTS AND PULL POSTS 3 1/2" O.D. X 11'-0" LONG. PULL POSTS SHALL NOT EXCEED 500'-0" SPACING. POST CONCRETE FOOTINGS SHALL BE CAST INTO 12" DIAMETER X 6'-0" DEEP AUGERED HOLES. |
| 3. LINE POST: | 2 3/8" O.D. AT A SPACING OF 10'-0" MAX. DRIVE SET A MINIMUM OF 8'-0" DEEP. |
| 4. TOP RAIL: | 1 5/8" O.D. THE TOP RAIL SHALL BE JOINED WITH 6" OUTER SLEEVE TO FORM A CONTINUOUS BRACE FOR EACH STRETCH OF FENCE AND SECURED TO TERMINAL POSTS, CORNER POSTS, GATE POSTS, AND PULL POSTS. |
| 5. BRACING: | 1 5/8" O.D. HORIZONTAL MID BRACE LOCATED AT TERMINAL POSTS, CORNER POSTS, GATE POSTS, PULL POSTS, AND TERMINATING AT THE FIRST LINE POST. BRACE ASSEMBLY INCLUDES A 3/8" TRUSS ROD. |
| 6. FITTINGS: | ALL FITTINGS SHALL BE INSTALLED SO AS TO PREVENT TAMPERING FROM OUTSIDE THE FENCED AREA. |
| 7. FABRIC: | WOVEN FROM 9 GAUGE MIN., CLASS 1, (1.2 OZ/F ²) GALVANIZED WIRE, AND WOVEN INTO 2"X2" MESH. TOP OF FABRIC BARBED, BOTTOM KNUCKLED. |
| 8. TENSION WIRE: | 7 GAUGE, 1.2 OZ/F ² GALVANIZED WIRE. STRETCH TIGHT AND SECURE TO BOTTOMS OF ALL POSTS. SECURE WITH HOG RINGS EVERY 12'. |
| 9. FABRIC WIRE: | FABRIC SHALL BE FASTENED TO TOP RAIL, AND TO BOTTOM TENSION WIRE AT 1'-0" INTERVALS AND SECURED TO ALL POSTS VERTICALLY AT 1'-0" INTERVALS. |
| 10. BARBED ARMS: | CAST ALUMINUM OR GALVANIZED ARM TO ACCOMMODATE THREE RUNS OF BARBED WIRE AT 45 DEGREE OVERHANG TO THE OUTSIDE, 1'-0" ABOVE FABRIC. |
| 11. BARBED WIRE: | TWO STRAND, 12.5 GAUGE GALVANIZED WIRE, WITH 14 GAUGE 4 POINT BARBS AT 5" O/C GALVANIZED. |
| 12. FOOTINGS: | MINIMUM CONCRETE 3000 PSI SULPHATE RESISTANT CEMENT WHERE SPECIFIED. DOME SHAPE TOPS OF FOOTINGS TO PROVIDE WATER DRAINAGE. |
| 13. ROLLING GATES: | ROLLING (SLIDE) GATE TYPE II, CLASS I PER ASTM F1184. FRAME WITH GALVANIZED PIPE, WELDED JOINTS. 2 3/8" O.D. GATES SHALL HAVE LATCHING DEVICES WITH A PROVISION FOR PADLOCKS & CHAIN. SLIDING GATES SHALL HAVE SEMI-AUTOMATIC OUTER LATCHES. |
| 14. GATE POST: | SEE GATE SCHEDULE. |
| 15. EMERGENCY EVAC GATE: | SEE DRAWING D-1.8-5827-0TDD FOR DETAIL. PROVIDE MINIMUM 270° SWING. |
| 16. DRAWING SUBMITTAL: | CONTRACTOR MAY UTILIZE APPROVED GATE DESIGN. CONTRACTOR TO SUBMIT DRAWINGS FOR ALTERNATE GATE DESIGN APPROVAL. |



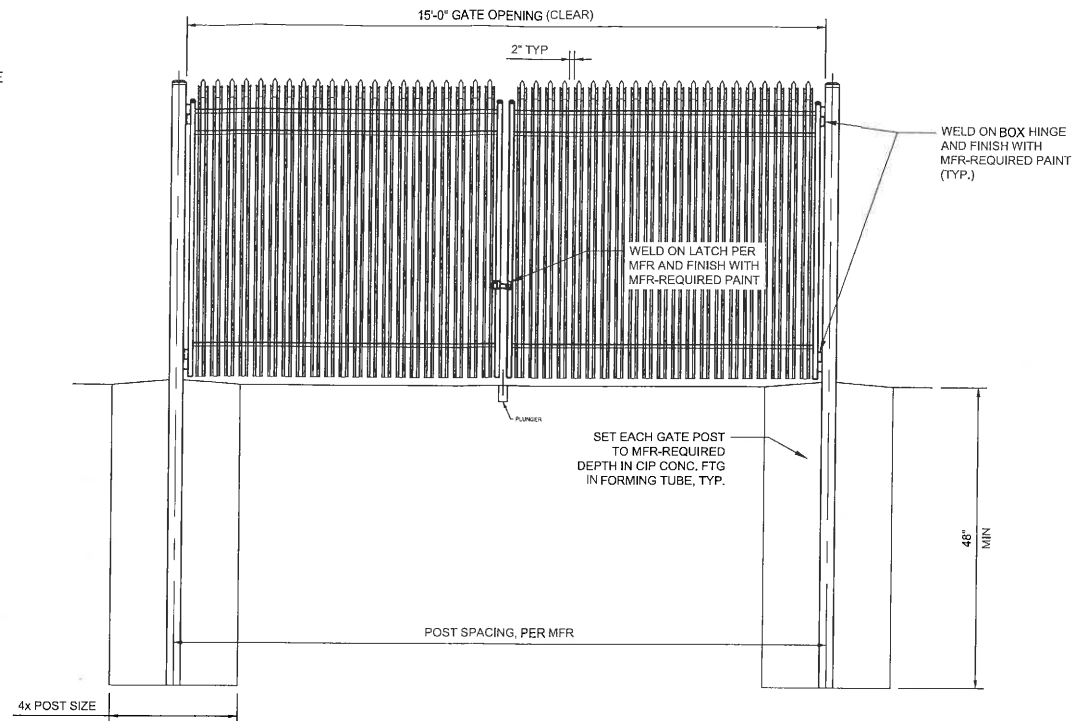
REV:	PROJECT TITLE:	SEQ#	
0.G	SAKONNET RIVER HDD	XXX	
A/E: MC.00424.073.10.01		PRGJ NO: XXXXXXX	
WP# NO:	XXXXX		
REV	REVISION DESCRIPTION	DATE BY	CHK APPR
0.A	ISSUED FOR 30% REVIEW	2022-04-15 BARR/PS1	BARR/OTC O. CANNON
0.B	ISSUED FOR 60% REVIEW	2022-07-22 BARR/PS1	BARR/OTC O. CANNON
0.C	RE-ISSUED FOR 30% REVIEW	2023-01-20 BARR/PS1	BARR/OTC O. CANNON
0.D	RE-ISSUED FOR 60% REVIEW	2022-04-27 BARR/OTC	BARR/AFI O. CANNON
0.E	ISSUED FOR PERMITTING	2023-06-12 BARR/PS1	BARR/AFI O. CANNON
0.F	ISSUED FOR 90% REVIEW	2023-06-16 BARR/PS1	BARR/OTC O. CANNON
0.G	RE-ISSUED FOR 90% REVIEW	2023-08-31 BARR/PS1	BARR/AFI O. CANNON

O.G	2023-08-31	PS1	AFL	RE-ISSUED FOR 90% REVIEW
O.F	2023-06-16	PS1	OTC	ISSUED FOR 90% REVIEW
O.E	2023-06-08	OTC	AFL	ISSUED FOR PERMITTING
O.D	2023-04-27	PS1	AFL	RE-ISSUED FOR 60% REVIEW
O.C	2023-01-20	BNM	OTC	RE-ISSUED FOR 30% REVIEW
O.B	2022-07-22	PS1	OTC	ISSUED FOR 60% REVIEW
REV	DATE	DSN	CK	DESCRIPTION

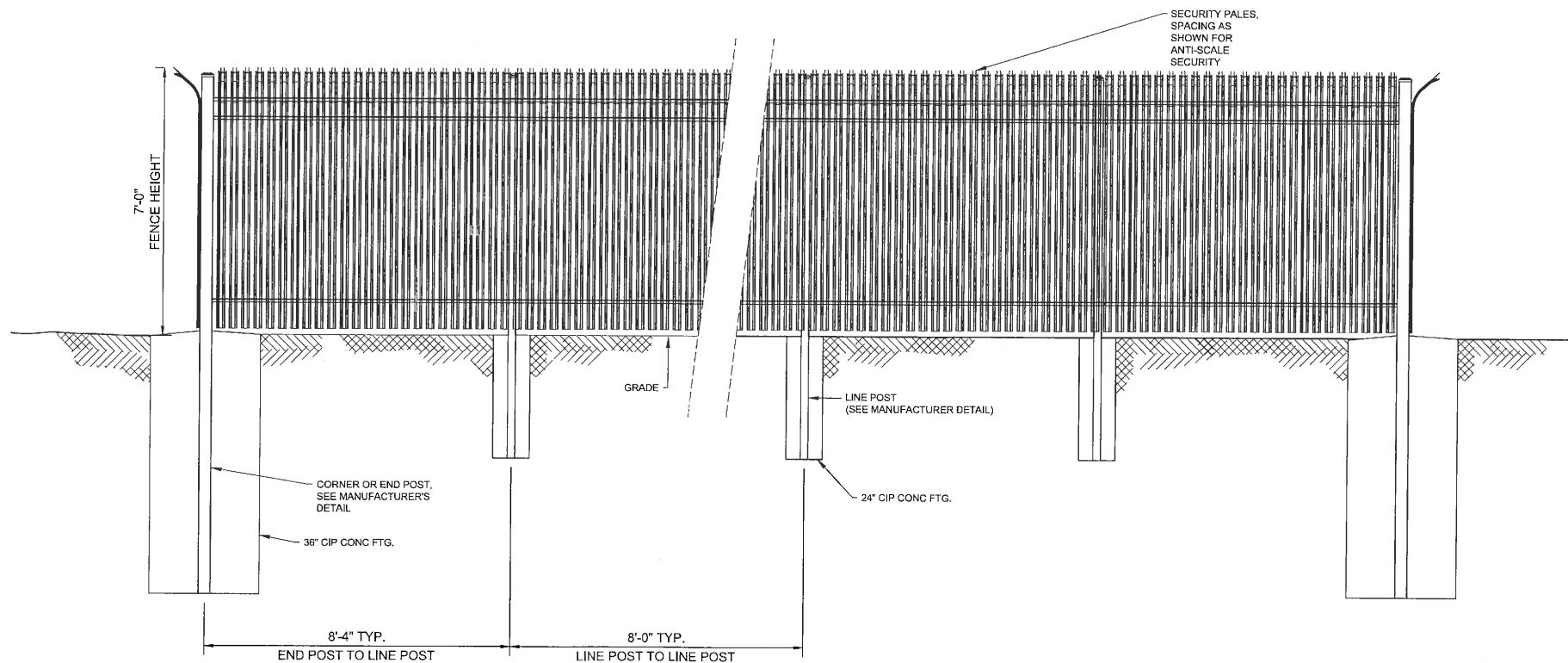


DRAWN BY:	PS1	07-22-2022	CIVIL SECURITY FENCE SECTIONS & DETAILS							
DESIGN CHECKER:	AFL									
DESIGN ENGINEER:	OTC									
PROJECT MANAGER:	JJL		TITLE:							
			LOC.: NEWPORT COUNTY, RHODE ISLAND				Algonquia Gas Transmission, LLC 5400 Worchester Ct. Houston, TX 77066-5718 (713) 625-0469			
TITLE	INITIALS	DATE	YEAR: 2022	W.O.:	SCALE:	NTS	DWG.:	XXXX-C.501-XXX7	REV.:	0.G

- NOTES:
1. ALL FENCES AND GATES MUST BE IMPASSE II SYSTEM BY AMERISTAR FENCING.
 2. PROVIDE ALL MANUFACTURE-RECOMMENDED HARDWARE AND FINISHING.
 3. PROVIDE 3" x 2.75" X 12GA. STEEL I-BEAM POSTS AS ALL FENCE POSTS. FINISH FENCE POSTS TO MATCH FENCE PER MANUFACTURER'S RECOMMENDATIONS.



A SECURITY DOUBLE-SWING GATE
NTS



B SECURITY FENCE ELEVATION
NTS

REV:	PROJECT TITLE:	SEQ #:
0.C	SAKONNET RIVER HDD	XXX
AFC: MC 400264.073.10.01 PROJ NO: XXXXXX		
WP NO: XXXX		
REV	REVISION DESCRIPTION	DATE BY CHK APPR
0.A	RE-ISSUED FOR 60% DESIGN	2023-04-27 BARR/AMW O. CANNON
0.B	ISSUED FOR 90% DESIGN	2023-05-16 BARR/AMW O. CANNON
0.C	RE-ISSUED FOR 90% REVIEW	2023-08-31 BARR/AMW O. CANNON



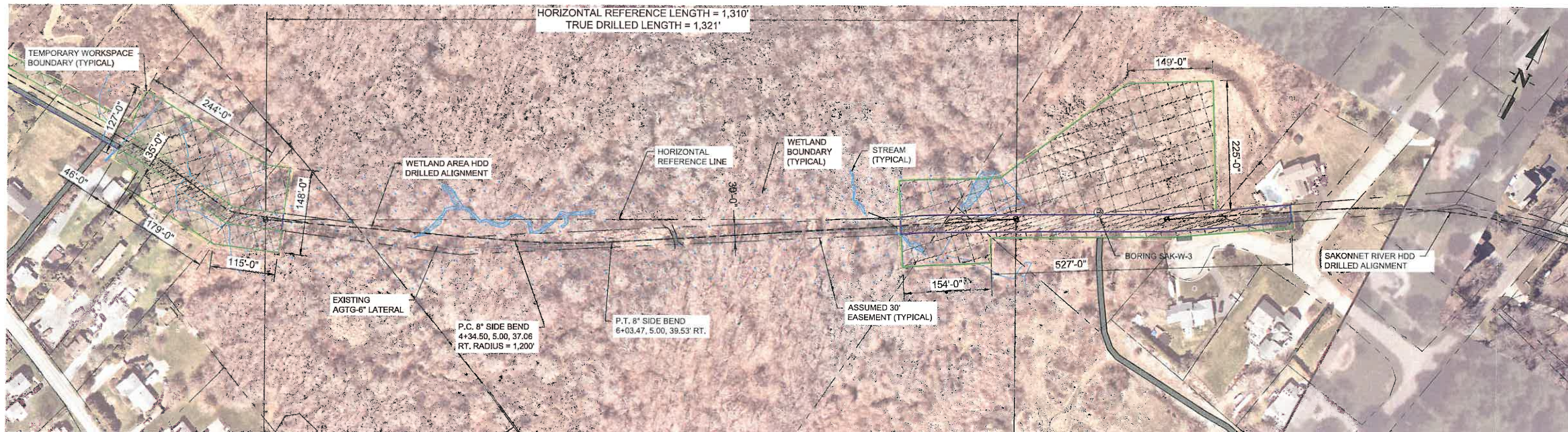
DRAWN BY:	AMW	06-16-2023
DESIGN CHECKER:	AFL	
DESIGN ENGINEER:	OTC	
PROJECT MANAGER:	JJL	
TITLE	INITIALS	DATE

CIVIL SECURITY FENCE SECTIONS & DETAILS (ALTERNATE)		
TITLE: NEWPORT COUNTY, RHODE ISLAND		
YEAR: 2023	W.O.:	SCALE: NTS

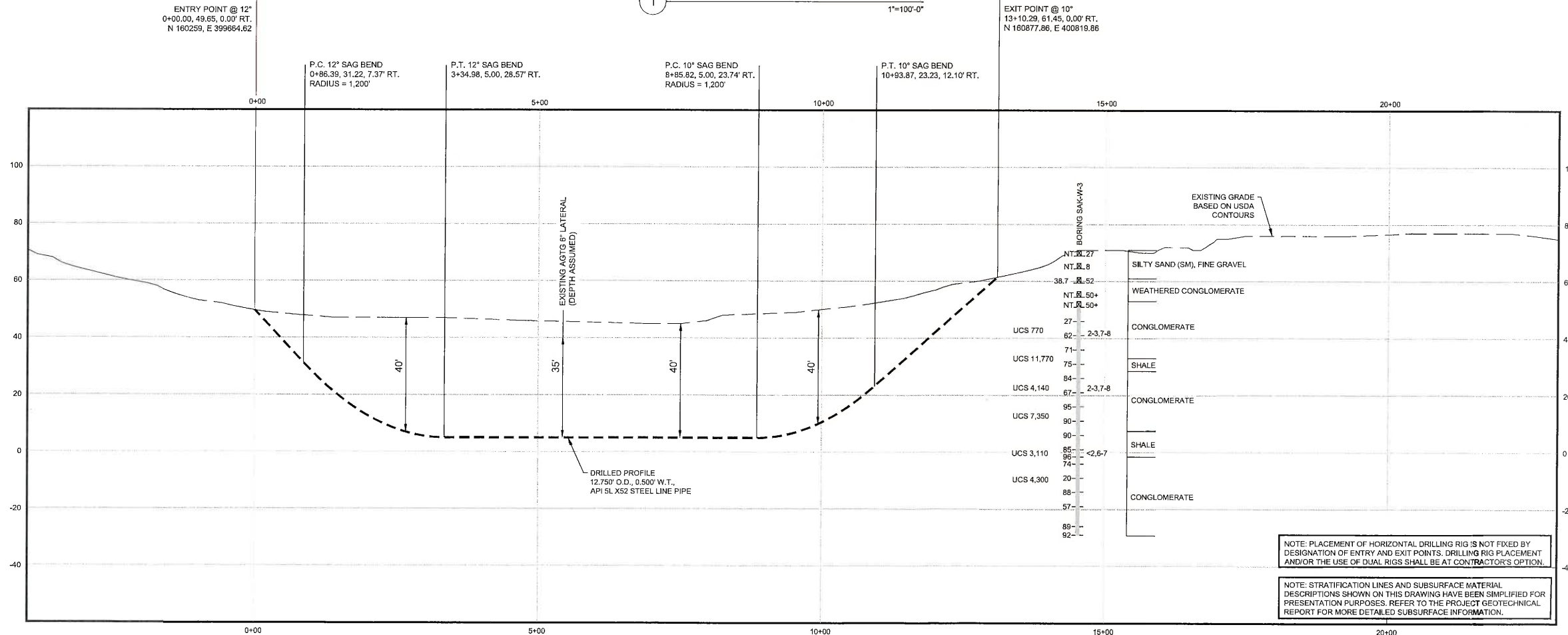


Algonquin Gas Transmission, LLC
5400 Woodbine Ct., Houston, TX 77055-1111 / 832-5400

DWG.: XXXX-C-501-XX7-ALT REV.: 0.C



1 PLAN: HDD ALIGNMENT (WETLAND AREA)
1"=100'-0"



2 PROFILE: HDD PROFILE (WETLAND AREA)
HORIZONTAL SCALE: 1"=100'-0"
VERTICAL SCALE: 1"=20'-0"

- LEGEND:**
- DRILLED PATH ENTRY/EXIT POINT
 - TEMPORARY WORKSPACE WITHIN THE R.O.W. WORKSPACE IN WETLAND TO BE MATTED
 - TEMPORARY WORKSPACE OUTSIDE OF THE R.O.W. WORKSPACE IN WETLAND TO BE MATTED
 - EXISTING WETLAND AREA
 - EXISTING WATER BODY
 - TEMPORARY ACCESS ROUTE
 - PROPERTY LINE

- GEOTECHNICAL LEGEND**
- BORING LOCATION
 - SPLIT SPOON SAMPLE
 - PENETRATION RESISTANCE IN BLOWS PER FOOT FOR A 140 POUND HAMMER FALLING 30 INCHES
 - PERCENTAGE OF GRAVEL BY WEIGHT FOR SAMPLES CONTAINING GRAVEL
 - UCS 6,250 UNCONFINED COMPRESSIVE STRENGTH (TSF)
 - 53 MOHS HARDNESS
 - ROCK QUALITY DESIGNATION (PERCENT)

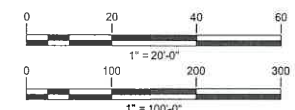
- GEOTECHNICAL NOTES:**
- GEOTECHNICAL INVESTIGATION WAS PERFORMED BY BARR ENGINEERING. REFER TO THE GEOTECHNICAL DATA REPORT (REV. 1), DATED JULY 2022 AND REVISED APRIL 2023 FOR DETAILED SUBSURFACE INFORMATION.
 - THE LETTERS "NT" TO THE LEFT OF THE DRILL LOG INDICATE THAT GRAVEL WAS OBSERVED BUT NO GRADATION TEST WAS PERFORMED.
 - THE GEOTECHNICAL DATA IS ONLY DESCRIPTIVE OF THE LOCATIONS ACTUALLY SAMPLED.

- TOPOGRAPHIC SURVEY NOTES:**
- THE ALIGNMENT OF ENBRIDGE PIPELINE G-2 IS APPROXIMATE. FIELD VERIFY ITS LOCATION PRIOR TO WORK.
 - NORTHINGS AND EASTINGS ARE IN U.S. SURVEY FEET REFERENCED TO RHODE ISLAND STATE PLANE COORDINATES, NAD 83.
 - ELEVATIONS ARE IN FEET REFERENCED TO NAVD 88.

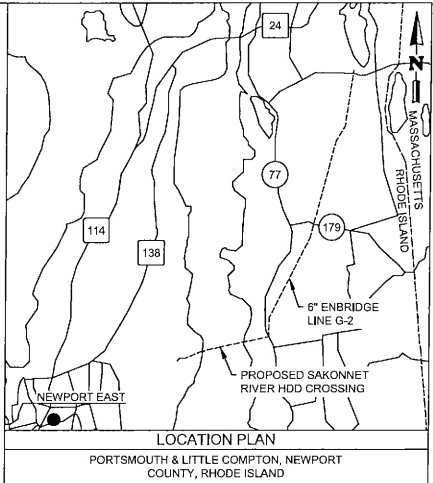
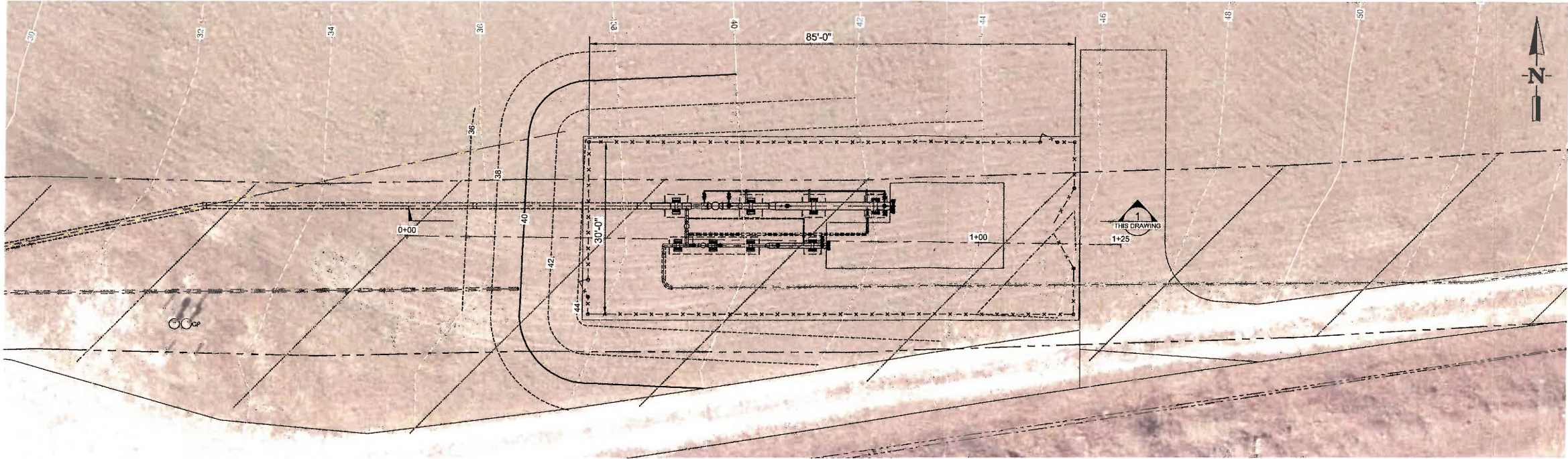
- DRILLED PATH NOTES:**
- DRILLED PATH STATIONING IS IN FEET BY HORIZONTAL MEASUREMENT AND IS REFERENCED TO CONTROL ESTABLISHED FOR THE DRILLED SEGMENT.
 - DRILLED PATH COORDINATES REFER TO CENTERLINE OF PILOT HOLE AS OPPOSED TO TOP OF INSTALLED PIPE.

- PILOT HOLE TOLERANCES:**
- THE PILOT HOLE SHALL BE DRILLED TO THE TOLERANCES LISTED BELOW. HOWEVER, IN ALL CASES, RIGHT-OF-WAY RESTRICTIONS AND CONCERN FOR ADJACENT FACILITIES SHALL TAKE PRECEDENCE OVER THESE TOLERANCES.
- ENTRY POINT: UP TO 5 FEET FORWARD OR BACK FROM THE DESIGNED ENTRY POINT; UP TO 5 FEET RIGHT OR LEFT OF DESIGNED ALIGNMENT.
 - EXIT POINT: UP TO 10 FEET SHORT OR 20 FEET LONG RELATIVE TO THE DESIGNED EXIT POINT; UP TO 5 FEET RIGHT OR LEFT OF THE DESIGNED ALIGNMENT.
 - ELEVATION: UP TO 3 FEET ABOVE AND 10 FEET BELOW THE DESIGNED PROFILE.
 - ALIGNMENT: UP TO 5 FEET RIGHT OR LEFT OF THE DESIGNED ALIGNMENT
 - CURVE RADIUS: NO LESS THAN 800 FEET BASED ON A 3-JOINT AVERAGE (ASSUMING RANGE 2 DRILL PIPE)

- PROTECTION OF EXISTING FACILITIES:**
- CONTRACTOR SHALL UNDERTAKE THE FOLLOWING STEPS PRIOR TO COMMENCING DRILLING OPERATIONS.
- CONTACT THE UTILITY LOCATION/NOTIFICATION SERVICE FOR THE CONSTRUCTION AREA.
 - POSITIVELY LOCATE AND STAKE ALL EXISTING UNDERGROUND FACILITIES. ANY FACILITIES LOCATED WITHIN 10 FEET OF THE DESIGNED DRILL PATH SHALL BE EXPOSED.
 - MODIFY DRILLING PRACTICES AND DOWNHOLE ASSEMBLIES AS NECESSARY TO PREVENT DAMAGE TO EXISTING FACILITIES.

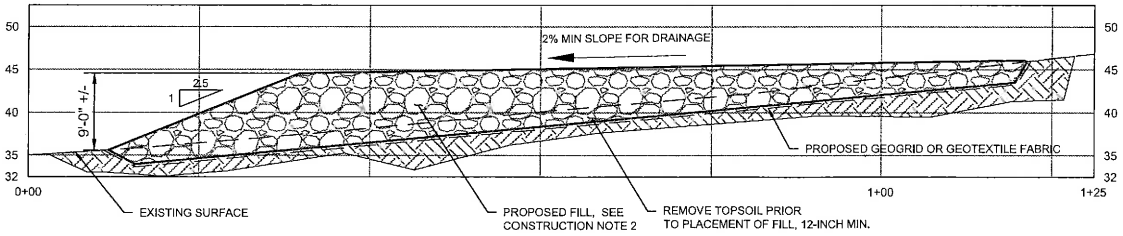


BARR Corporate Headquarters: Minneapolis, Minnesota Ph: 1-800-632-2277	DRAWN BY:	PS1 06-08-2023	CIVIL	
	DESIGN CHECKER:	AFL	HDD PLAN AND PROFILE	
	DESIGN ENGINEER:	OTC	WETLAND AREA	
	PROJECT MANAGER:	JLL	TITLE:	
DWG. NO.		REFERENCE DWG.	LOC.: NEWPORT, RHODE ISLAND	YEAR: 2023
REV	DATE	DSN	CK	DESCRIPTION
O.C	2023-09-29	PS1	OTC	RE-ISSUED FOR 90% REVIEW
O.B	2023-08-31	PS1	AFL	RE-ISSUED FOR 90% REVIEW
O.A	2023-06-26	PS1	AFL	ISSUED FOR PERMITTING
DWG. NO.		REFERENCE DWG.	SCALE: AS SHOWN	DWG.: XXXX-C.501-XXXB
				REV.: O.C



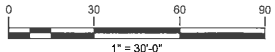
- CONSTRUCTION NOTES:**
1. NOTIFY THE RHODE ISLAND SAFE DIG SERVICE TO HAVE BURIED UTILITIES MARKED PRIOR TO EXCAVATION.
 2. UTILITY MARKERS TO BE CLEARLY VISIBLE PRIOR TO AND DURING THE DURATION OF WORK.
 3. PERFORM A 4-WAY SWEEP TO IDENTIFY UNDERGROUND UTILITIES.
 4. THE ALIGNMENT OF ENBRIDGE PIPELINE G-2 IS APPROXIMATE. CONTRACTOR TO FIELD VERIFY ITS LOCATION PRIOR TO WORK.
 5. CIVIL PLATFORM TO BE CONSTRUCTED USING "BANK RUN" PROCESSED SAND AND GRAVEL PER RHODE ISLAND DOT STANDARD SPECIFICATIONS FOR ROAD AND BRIDGE CONSTRUCTION, SECTION M-1, OR APPROVED ALTERNATE MATERIAL.
 6. PLACE FILL IN 8-INCH MAXIMUM LOOSE LIFTS AND COMPACT TO 95% STANDARD PROCTOR MAXIMUM DRY DENSITY OR GREATER. ADJUST THE MOISTURE CONTENT OF THE FILL MATERIAL, AS NEEDED, TO ACHIEVE TARGET COMPACTION.
 7. RESTORE DISTURBED AREAS BY GRADING, SPREADING TOPSOIL, SPREADING THE RECOMMENDED SEED MIX IN THE ENVIRONMENTAL PROTECTION PLAN, AND COVERING WITH MULCH OR STRAW.

- LEGEND**
- ENBRIDGE LINE G-2
 - ===== PROPOSED HDD ALIGNMENT
 - CATHODIC PROTECTION LINE
 - PROPOSED SECURITY FENCE
 - EXISTING CONTOUR (SHOWN IN WHITE)
 - PROPOSED CONTOUR (SHOWN IN BLACK)



1 SECTION: CIVIL PLATFORM FOR TRAPS
1" = 10'
THIS DRAWING

REV: 0.B	PROJECT TITLE: SAKONNET RIVER HDD	SEQ #: XXX
AFE: MC.400264.073.10.01	PROJ: XXXXXX	INC: XXXXXX
WP NO: XXXX		
REV	REVISION DESCRIPTION	DATE BY CHK APPR
0.A	ISSUED FOR 90% REVIEW	2023-05-16 BARR/OTC BARR/PS1 O. CANNON
0.B	RE-ISSUED FOR 90% REVIEW	2023-08-31 BARR/AFL BARR/PS1 O. CANNON



						BARR		DRAWN BY: PS1	06-12-2023	CIVIL GRADING PLAN PLAN AND SECTION					
						Corporate Headquarters: Minneapolis, Minnesota Ph: 1-800-632-2277		DESIGN CHECKER: OTC	06-15-2023						
								DESIGN ENGINEER: OTC	06-16-2023						
								PROJECT MANAGER: JUL	06-16-2023	LOC.: NEWPORT COUNTY, RHODE ISLAND					
								TITLE	INITIALS	DATE	YEAR: 2023	W.O.:	SCALE: AS SHOWN	DWG.: XXXX-C.501-XXX9	REV.: 0.B
DWG. NO.	REFERENCE DWG.					REV	DATE	DSN	CK	DESCRIPTION					
						0.B	2023-08-31	PS1	AFL	RE-ISSUED FOR 90% REVIEW					
						0.A	2022-04-15	PS1	OTC	ISSUED FOR 90% REVIEW					