

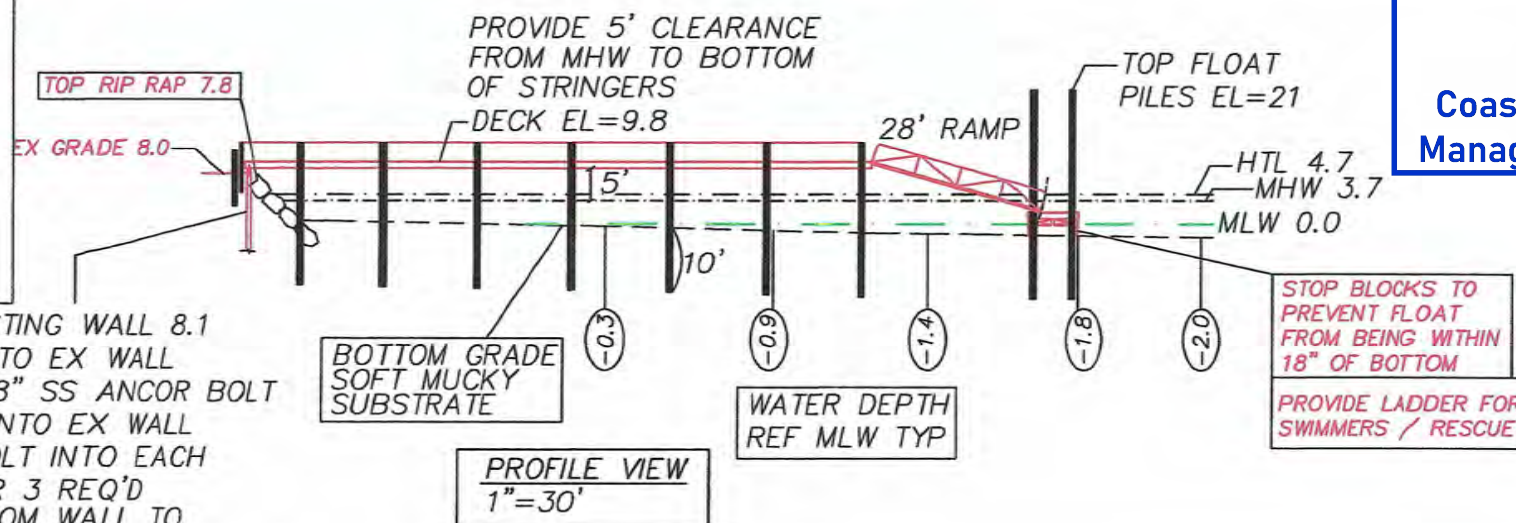
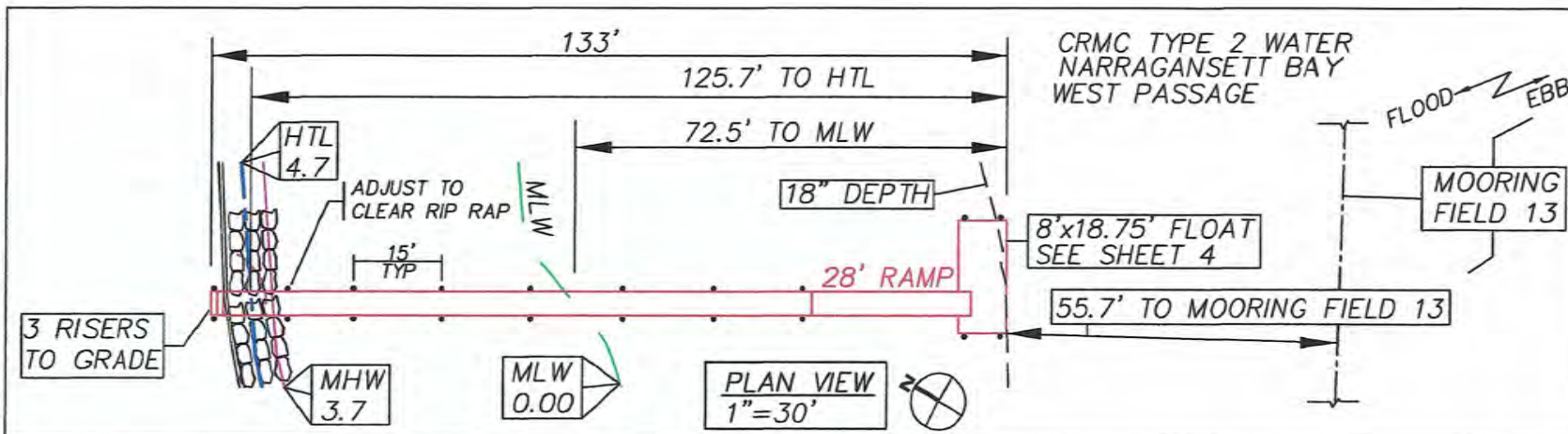
LOCUS PLAN
PORTION OF NOAA 13221

WARREN HALL
CIVIL ENGINEER

PROPOSED RESIDENTIAL PIER
EDON REALTY TRUST &
DONNA ROSSETTI TRUST
#353 EARLE DRIVE
AP 89, LOT 110
NORTH KINGSTOWN, RI
BY: WARREN HALL, CIVIL ENGINEER
1-30-25 SHEET 1 OF 5

Received
2/4/2025
Coastal Resources
Management Council

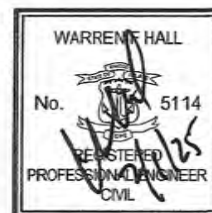




Received
2/4/2025
Coastal Resources
Management Council

LEGEND

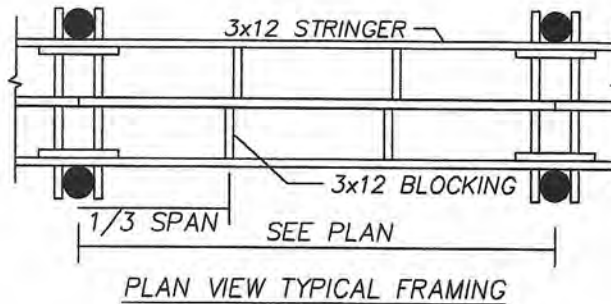
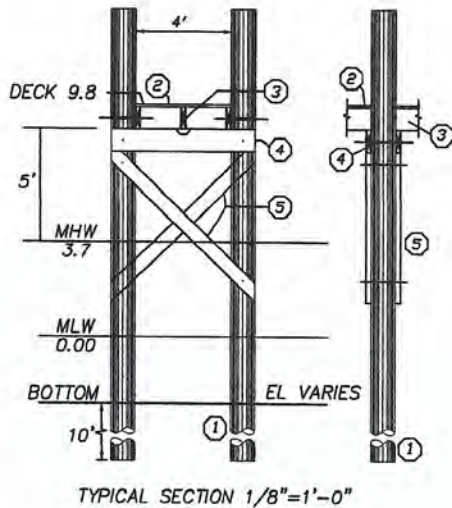
- HTL HIGH TIDE LINE
- MHW MEAN HIGH WATER
- MLW MEAN LOW WATER
- PL PROPERTY LINE
- PLE PROPERTY LINE EXTENSION
- FND FOUND



PROPOSED RESIDENTIAL PIER
EDON REALTY TRUST &
DONNA ROSSETTI TRUST
#353 EARLE DRIVE
AP 89, LOT 110
NORTH KINGSTOWN, RI
BY: WARREN HALL, CIVIL ENGINEER
1-30-25 SHEET 3 OF 5

PILE DRIVING NOTE:

A "soft start" is required to allow animals an opportunity to leave the project vicinity before sound pressure levels increase. In addition to using a soft start at the beginning of the work day for pile driving, one must also be used at any time following cessation of pile driving for a period of 30 minutes or longer. For impact pile driving: pile driving will commence with an initial set of three strikes by the hammer at 40% energy, followed by a one minute wait period, then two subsequent 3-strike sets at 40 % energy, with one minute waiting periods, before initiating continuous impact driving.



- ① 10" TIP CCA TREATED WOOD PILES
TREAT TO 2.5 PCF (1.0 ALLOWED WITH
OWNER CONSENT & GREENHEART AT FLOAT)
- ② 4' @ 5/4x6 DECKING ACQ TREATED TO .6 PCF
FASTEN TO STRINGERS WITH 3 @ 3-1/2"
NO. 10 316 STAINLESS STEEL SCREWS
- ③ 3x12 STRINGER, ACQ TREATED THRU BOLT AT PILE
FASTEN MIDDLE STRINGER WITH SIMPSON
H-1 HURRICANE ANCHOR
- ④ 2-3x12 CAP BEAM, ACQ TREATED TO
.6 PCF
- ⑤ 3x10 CROSS BRACE, ACQ TREATED TO
2.5 PCF

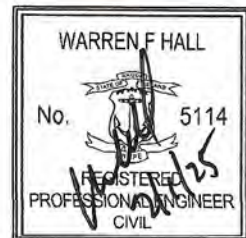
GENERAL NOTES:

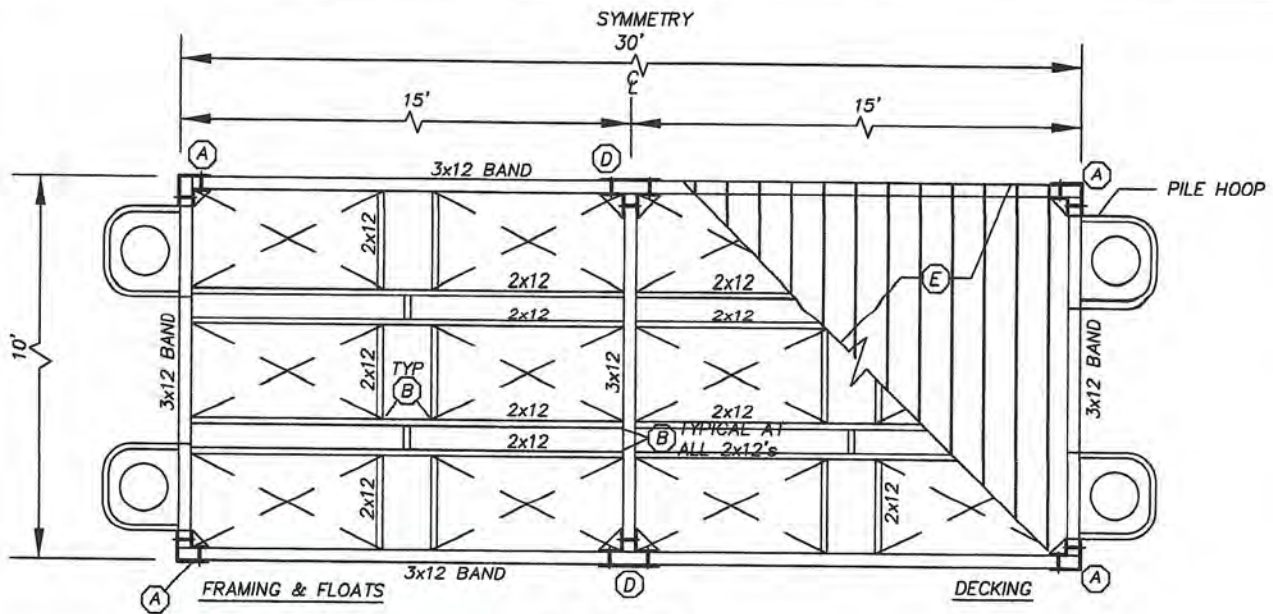
- 1) ALL BOLTS, CONNECTORS, WASHERS, NAILS, ECT SHALL BE HOT DIPPED GALVANIZED
- 2) CONTRACTOR SHALL ADHERE TO ALL OSHA RULES AND REGULATIONS THROUGHOUT ALL PHASES OF CONSTRUCTION
- 3) CONTRACTOR SHALL BE AWARE THAT THE STRATA INTO WHICH THESE PILES ARE TO BE DRIVEN MAY REQUIRE DRILLING TO ENSURE A MINIMUM 10' PENETRATION BELOW EXISTING GRADE

WARREN HALL
CIVIL ENGINEER

PROPOSED RESIDENTIAL PIER
EDON REALTY TRUST &
DONNA ROSSETTI TRUST
AP 89, LOT 110
#353 EARLE DRIVE
NORTH KINGSTOWN, RI
BY: WARREN HALL, CIVIL ENGINEER
1-30-25 SHEET 4 OF 5

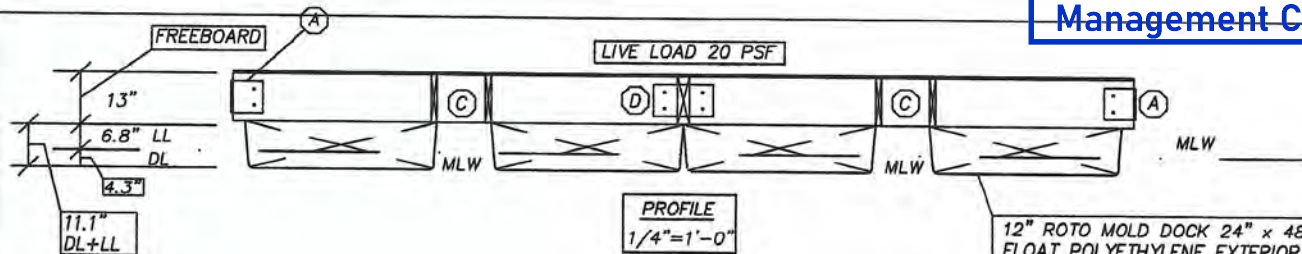
Received
2/4/2025
Coastal Resources
Management Council





PLAN VIEW
1/4"=1'-0"

Received
2/4/2025
Coastal Resources
Management Council



PROFILE
1/4"=1'-0"

12" ROTO MOLD DOCK 24" x 48"
FLOAT POLYETHYLENE EXTERIOR
SHELL - EXPANDED POLYSTYRENE
FILLED, FASTEN TO STRINGERS
WITH 1/2" SS x 4" BOLTS & WASHERS

- A CORNER PLATE
HDG 8"x8"x3/8"x10"
THRU BOLT WITH 5/8"
WITH INSIDE GUSSET
3/8" THICK
CUT FLUSH & RECESS
FOR SMOOTH FINISH
- B FASTEN 2x12 WITH HU212
SIMPSON JOIST HANGER
- C PICK POINT FOR SEASONAL
LIFTING

- D PLATE
HDG 16"x10"x3/8"
THRU BOLT WITH 5/8"
WITH INSIDE GUSSET
6"x6"x3/8" THICK
CUT FLUSH & RECESS
FOR SMOOTH FINISH
- E 5/4 X 8 DECKING, FASTEN
TO STRINGERS WITH 3 NO.
8 STAINLESS STEEL SCREWS

FLOAT DESIGN: USE 12@24x48x12 ROTO MOLD 433# FLOATS
DL=150SFx10PSF+(12x33)=1896#
LL=150SFx20PSF=3000#
DL DRAFT=1896/5196=.36' (4.3")
LL DRAFT=3000/5196=.57' (6.8")
TOTAL DRAFT=.93' (11.1") < 12" OK CRMC TABLE 8
400# POINT LOAD=.52' (6.2") DRAFT

FLOAT DETAILS

WARREN HALL
CIVIL ENGINEER

PROPOSED RESIDENTIAL PIER
EDON REALTY TRUST &
DONNA ROSSETTI TRUST
#353 EARLE DRIVE
AP 89, LOT 110
NORTH KINGSTOWN, RI
BY: WARREN HALL, CIVIL ENGINEER
1-30-25 SHEET 5 OF 5

LEGEND
HDG HOT DIPPED GALVANIZED
SS STAINLESS STEEL
MLW MEAN LOW WATER
LL LIVE LOAD
DL DEAD LOAD

