

# Plan Set

Issued for: CRMC Category B Assent  
Date Issued: 11/15/2024  
Revision Date: 2/5/2025

| Sheet Index |                          |              |
|-------------|--------------------------|--------------|
| Number      | Drawing Title            | Latest Issue |
| 2           | Notes                    | 2/5/2025     |
| 3           | Index                    | 2/5/2025     |
| 4-12        | Site Access and BMP Plan | 2/5/2025     |
| 13-16       | Wetland Mitigation Plan  | 2/5/2025     |
| 17-21       | Details                  | 2/5/2025     |

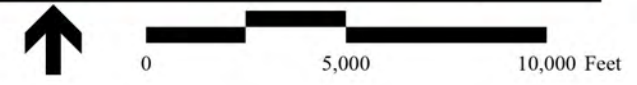


# E183-3 and F184N-4/5 115kV Transmission Lines Asset Condition Refurbishment Project

Bristol and Warren, Rhode Island



Site Location Map



Received  
3/27/2025  
Coastal Resources  
Management Council



**EXISTING CONDITIONS INFORMATION:  
REFERENCES:**

1. WETLAND DELINEATION WAS PERFORMED BY VHB, PROVIDENCE OFFICE. STRUCTURE AND FLAG LOCATIONS WERE LOCATED BY A GLOBAL POSITIONINGSYSTEM (GPS) FIELD SURVEY CONDUCTED BY VHB IN SEPTEMBER AND OCTOBER 2023. THIS SURVEY CONFORMS TO A CLASS IV STANDARD AS DEFINED IN THE PROCEDURAL AND TECHNICAL STANDARDS FOR PERFORMING LAND SURVEYING IN THE STATE OF RHODE ISLAND.
2. THE NOAA DATA ACCESS VIEWER WAS UTILIZED TO EXTRACT CONTOUR LINES AT 2-FOOT AND 10-FOOT INTERVALS, AS WELL AS FOR MEAN HIGH WATER AT 2.12 FEET AND HIGHEST ASTRONOMICAL TIDE AT 3.78 FEET, FROM THE 2022 USGS LIDAR RHODE ISLAND STATEWIDE DATASET.
3. AERIAL IMAGERY WAS ACQUIRED FROM THE STATEWIDE, TRUE COLOR, 3-INCH SPATIAL RESOLUTION AERIAL PHOTOGRAPHS OF RHODE ISLAND. IMAGERY WAS COLLECTED MARCH 2024.

| Wetland ID  | Wetland Type    | Temporary Construction Matting (SF) | Wetland ID                       | Wetland Type    | Temporary Construction Matting (SF) |
|-------------|-----------------|-------------------------------------|----------------------------------|-----------------|-------------------------------------|
| Wetland 2   | Coastal Wetland | 459,293                             | Stormwater Management Basin 5.5  |                 | 285                                 |
| Wetland 2/3 | Coastal Wetland | 3,063                               | Stormwater Management Basin 5.5A |                 | 358                                 |
| Wetland 2/5 | Coastal Wetland | 11,909                              | Wetland 2/7                      | Coastal Wetland | 64,310                              |

**RINHP/WLT PROTECTION NOTES :**

1. TURTLES:
  - PRE-CONSTRUCTION CONTRACTOR TRAINING BY A QUALIFIED BIOLOGIST FOR WORK WITHIN HABITAT AREAS.
  - INSTALL CONSTRUCTION MATTING IN MARSH HABITAT AREAS DURING THE ACTIVE SEASON (APRIL 15 - OCTOBER 15) WITH MONITOR /AVOID PLACING CONSTRUCTION MATS IN MARSH HABITAT AREAS DURING ANIMAL DORMANCY (OCTOBER 16 - APRIL 14) WHENEVER POSSIBLE.
  - AVOID PLACING MATS IN TURTLE WINTER HABITAT, BRIDGE OVER AREA OF OPEN WATER, TIDAL CREEKS AND MOSQUITO DITCHES.
  - INSTALL EXCLUSIONARY FENCING AROUND UPLAND NESTING HABITAT BEFORE MAY 15 TO ISOLATE WORK AREAS LOCATED WITHIN UPLAND NESTING HABITAT. NESTING HABITAT IDENTIFIED DURING THE FIELD DELINEATION AND ASSESSMENT INCLUDED THE EXPOSED SOIL AROUND THE OUTSIDE OF THE WARREN SUBSTATION FENCE.
  - MAINTAIN TURTLE EXCLUSION FENCING DURING THE NESTING PERIOD FROM MAY15 - JULY15.
  - EXCAVATIONS SHOULD BE COMPLETED WITHIN ONE DAY IF POSSIBLE. IF EXCAVATIONS MUST REMAIN OPEN LONGER THAN ONE DAY, THEY SHOULD BE COVERED FLUSH TO THE GROUND TO PREVENT TURTLES FROM FALLING OR GETTING TRAPPED.
  - TURTLES OBSERVED WITHIN WORK AREAS SHOULD BE MOVED AWAY FROM CONSTRUCTION ACTIVITIES BY A TRAINED TURTLE MONITOR.
  - REPORT OBSERVATIONS TO RIE ENVIRONMENTAL.
2. PLANTS:
  - PRE-CONSTRUCTION CONTRACTOR TRAINING BY A QUALIFIED BIOLOGIST FOR WORK WITHIN HABITAT AREAS.
  - AVOID INTRODUCTION AND SPREAD OF INVASIVE PLANTS TO THE GREATEST EXTENT POSSIBLE.
  - CONDUCT VEGETATION MANAGEMENT ACTIVITIES BETWEEN NOVEMBER 1 AND APRIL 15 TO THE EXTENT PRACTICAL AND DO NOT CHIP, OR PILE SLASH WITHIN WETLANDS, IDENTIFIED RARE SPECIES HABITAT, OR WITHIN 50 FEET OF DELINEATED OCCURRENCES OR KNOWN ELEMENT OCCURRENCE RECORDS OF RARE SPECIES. IF VEGETATION MANAGEMENT ACTIVITIES MUST OCCUR DURING THE GROWING SEASON, WORK MUST BE PRECEDED BY A BOTANICAL SURVEY AND DELINEATION TO IDENTIFY VEGETATED AREAS TO AVOID OR WHERE VEGETATION MANAGEMENT MUST BE COMPLETED WITH HAND TOOLS.
  - BOTANICAL SURVEY AND DELINEATION BY QUALIFIED BOTANIST DURING APPROPRIATE PLANT IDENTIFICATION PERIOD.
  - AVOID DELINEATED OCCURRENCES BY SHIFTING WORK AREAS. IF AVOIDANCE OF DIRECT IMPACTS IS NOT POSSIBLE, CONSULT BOTANIST TO IDENTIFY SITE-SPECIFIC PROTECTION AND IMPACT MINIMIZATION MEASURES (E.G., MAT BRIDGES, TRANSPLANTING).
  - REPORT OBSERVATIONS TO RIE ENVIRONMENTAL.
3. BIRDS:
  - PRE-CONSTRUCTION CONTRACTOR TRAINING BY A QUALIFIED BIOLOGIST FOR WORK WITHIN HABITAT AREAS.
  - AVOID WORK IN SALT MARSHES DURING BREEDING/FLEDGING SEASON (MAY 15 - AUGUST 15). IF WORK MUST BE CONDUCTED IN SALT MARSHES DURING BREEDING/FLEDGING SEASON, SURVEYS SHOULD BE CONDUCTED BY A QUALIFIED BIOLOGIST TO IDENTIFY ANY NESTS PRESENT IN WORK AREAS AND ALONG ACCESS ROUTES.
  - IF NESTS ARE PRESENT ALONG PROPOSED ACCESS ROUTES, ALTERNATIVE ACCESS ROUTES SHOULD BE IDENTIFIED.
  - IF NEST ARE PRESENT WITHIN PROPOSED WORK AREAS, WORK SHOULD BE DELAYED UNTIL HATCHLINGS HAVE FLEDGED.

**EROSION AND SEDIMENT CONTROL NOTES:**

1. PRIOR TO STARTING ANY SITE WORK, THE CONTRACTOR SHALL NOTIFY APPROPRIATE AGENCIES AND SHALL INSTALL EROSION CONTROL MEASURES AS SHOWN ON THE PLANS AND AS IDENTIFIED IN FEDERAL, STATE AND LOCAL APPROVAL DOCUMENTS PERTAINING TO THIS PROJECT.
2. A SOIL EROSION AND SEDIMENTATION CONTROL PLAN HAS BEEN DESIGNED TO PROTECT ON-SITE WETLANDS AND WATERCOURSES AND OFF-SITE AREAS DURING AND AFTER CONSTRUCTION.
3. IN AREAS WHERE HIGH RUNOFF VELOCITIES OR HIGH SEDIMENT LOADS ARE EXPECTED, TWO LINES OF COMPOST FILTER SOCK (CFS) WILL BE INSTALLED BACK TO BACK.
4. TYPICAL CRUSHED-STONE CONSTRUCTION ENTRANCE/EXITS WILL BE CONSTRUCTED AT EACH STREET ACCESS POINT WITHIN THE PROJECT AREA.
5. ONCE WORK IS COMPLETE, FINAL SURFACE TREATMENT CONSISTING OF STRAW OR CELLULOSE MULCH WILL BE APPLIED TO STABILIZE THE DISTURBED AREAS. ANY SOIL DISTURBANCE ASSOCIATED WITH EQUIPMENT ACCESS TO STRUCTURES OR STRUCTURE EXCAVATIONS SHOULD BE MULCHED WITH STRAW ON ALL DISTURBED AREAS AS SOON AS POSSIBLE BUT NOT MORE THAN 14 DAYS AFTER THE CONSTRUCTION ACTIVITY IN THAT AREA HAS TEMPORARILY OR PERMANENTLY CEASED.
6. SEDIMENT SHALL BE REMOVED FROM BEHIND BARRIERS IF GREATER THAN 6 INCHES DEEP OR AS NEEDED.
7. DAMAGED OR DETERIORATED EROSION/SEDIMENTATION CONTROL ITEMS WILL BE REPAIRED IMMEDIATELY AFTER IDENTIFICATION.
8. EROSION CONTROL MEASURES SHALL REMAIN IN PLACE UNTIL ALL DISTURBED EARTH HAS BEEN SECURELY STABILIZED. ONCE THE SITE IS STABILIZED, THE STRAW BALES WILL BE REMOVED OR BROKEN UP AND SPREAD AS MULCH. ALL OTHER CONTROLS SHALL BE REMOVED AND PROPERLY DISPOSED OF BY THE CONTRACTOR.
9. IN THE EVENT OF A FUEL SPILL OR EQUIPMENT MALFUNCTION RESULTING IN A RELEASE OF HAZARDOUS MATERIAL, ALL WORK WILL BE STOPPED IN THIS AREA UNTIL THE RELEASE/SPILL IS CLEANED UP.
10. EQUIPMENT USED FOR CONSTRUCTION WILL BE PROPERLY MAINTAINED AND OPERATED TO REDUCE THE CHANCES OF SPILL OCCURRENCES OF PETROLEUM PRODUCTS. REFUELING OF EQUIPMENT WILL BE REQUIRED TO CARRY SPILL CONTAINMENT AND PREVENTION DEVICES (I.E., ABSORBENT PADS, CLEAN UP RAGS, FIVE GALLON CONTAINERS, ABSORBENT MATERIAL, ETC.) AT ALL TIMES. IN ADDITION, MAINTENANCE EQUIPMENT AND REPLACEMENT PARTS FOR CONSTRUCTION EQUIPMENT WILL BE ON HAND TO REPAIR FAILURES AND STOP A SPILL IN THE EVENT OF EQUIPMENT MALFUNCTION.
11. ANY HAZARDOUS WASTE SPILLS SHALL BE CLEANED UP IMMEDIATELY, AND IF THE SPILL AMOUNT IS EQUAL TO OR EXCEEDS THE EPA REPORTABLE QUANTITY (RQ) FOR THAT SUBSTANCE IN ACCORDANCE WITH 40 CFR PARTS 1010, 117, OR 302, THE CONTRACTOR SHALL IMMEDIATELY CONTACT THE NATIONAL RESPONSE CENTER AT 1-800-424-8802. THE CONTRACTOR WILL ALSO BE RESPONSIBLE FOR SUBMITTING IN WRITING A DESCRIPTION OF THE RELEASE TO THE EPA REGIONAL OFFICE AND RIDEM PROVIDING THE DATE AND CIRCUMSTANCES OF THE RELEASE AND THE STEPS TO BE TAKEN TO PREVENT ANOTHER RELEASE. DIRECTIONS FOR CLEANING UP SPILLS SHALL BE CLEARLY POSTED AT A DESIGNATED ON-SITE LOCATION, AND CONSTRUCTION PERSONNEL SHALL BE MADE AWARE OF THE PROCEDURES AND LOCATION OF CLEANUP SUPPLIES. PERSONNEL SHALL WEAR APPROPRIATE PROTECTIVE GEAR AND HAVE PROPER TRAINING TO PREVENT INJURY FROM CONTACT WITH ANY HAZARDOUS SUBSTANCES.
12. NO GRADE CHANGES ARE PROPOSED.

**GENERAL NOTES**

1. STONE WALL DISMANTLING AND RE-BUILDING PROCEDURE REMOVAL OR ALTERATION OF STONE WALLS SHALL BE AVOIDED, WHENEVER POSSIBLE. STONE WALLS REMOVED OR BREACHED BY CONSTRUCTION ACTIVITIES SHALL BE REPAIRED OR REBUILT. THE REMOVAL AND REBUILDING OF STONE WALLS REQUIRES APPROVAL FROM THE RHODE ISLAND ENERGY ENVIRONMENTAL SCIENTIST AND PROPERTY LEGAL. MAY REQUIRE SEVERAL WEEKS LEAD TIME FOR COORDINATION AND SHALL BE COMPLETED IN ACCORDANCE WITH EG303 SECTION 9.0.

**Received**  
3/27/2025  
**Coastal Resources  
Management Council**

**E183-3 and F184N-4/5 115kV Transmission Lines  
Asset Condition Refurbishment Project**

Notes  
Bristol and Warren, RI

Page 2 of 21



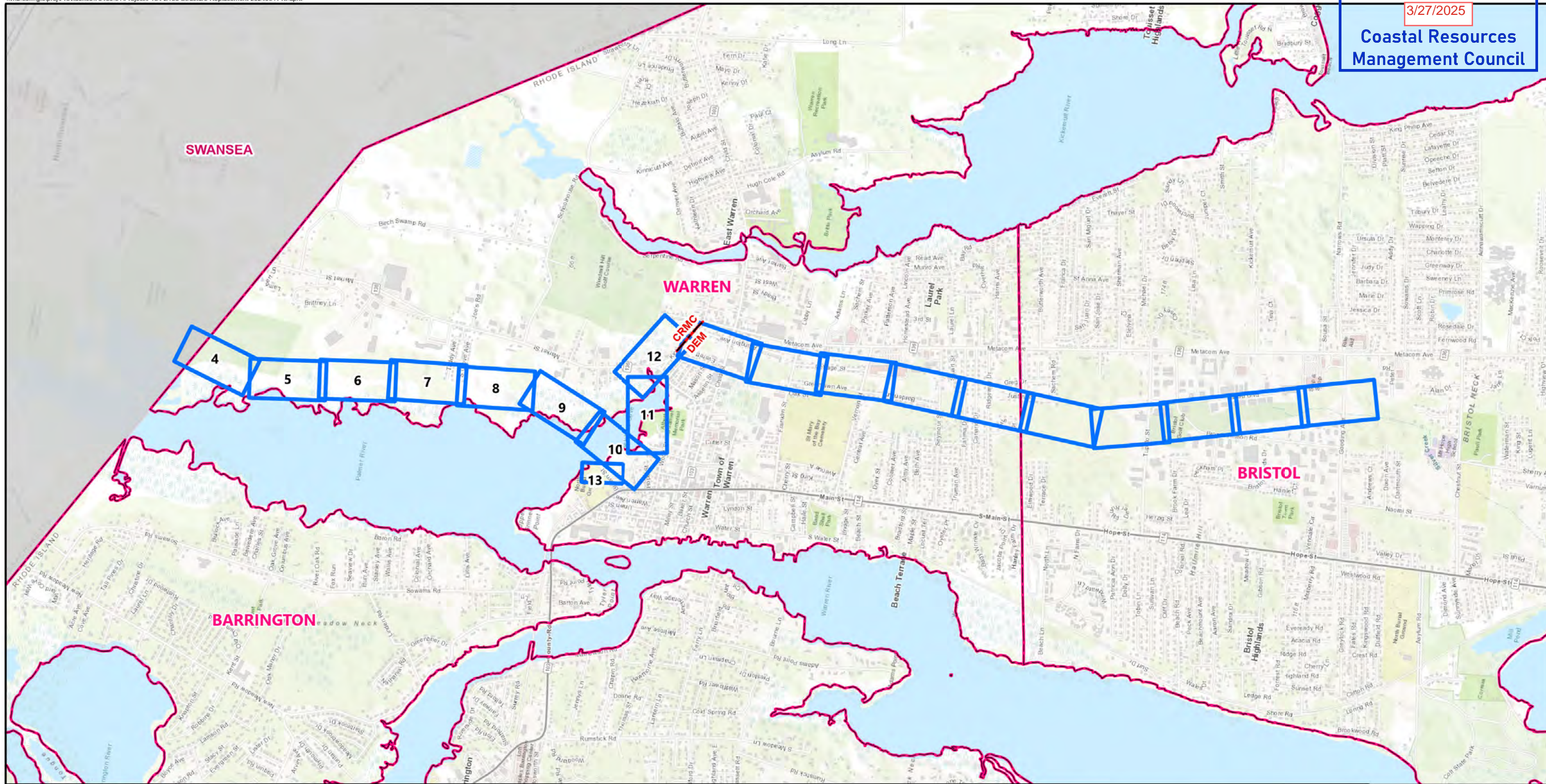
Revised: 2/5/2025  
Date: 11/15/2024

Source: RIGIS, RI Energy, VHB





Received  
3/27/2025  
Coastal Resources  
Management Council



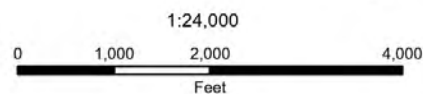
- Wetland Jurisdiction Boundary
- Page Index
- Town Boundary

### E183-3 and F184N-4/5 115kV Transmission Lines Asset Condition Refurbishment Project

Index  
Bristol and Warren, RI

Page 3 of 21

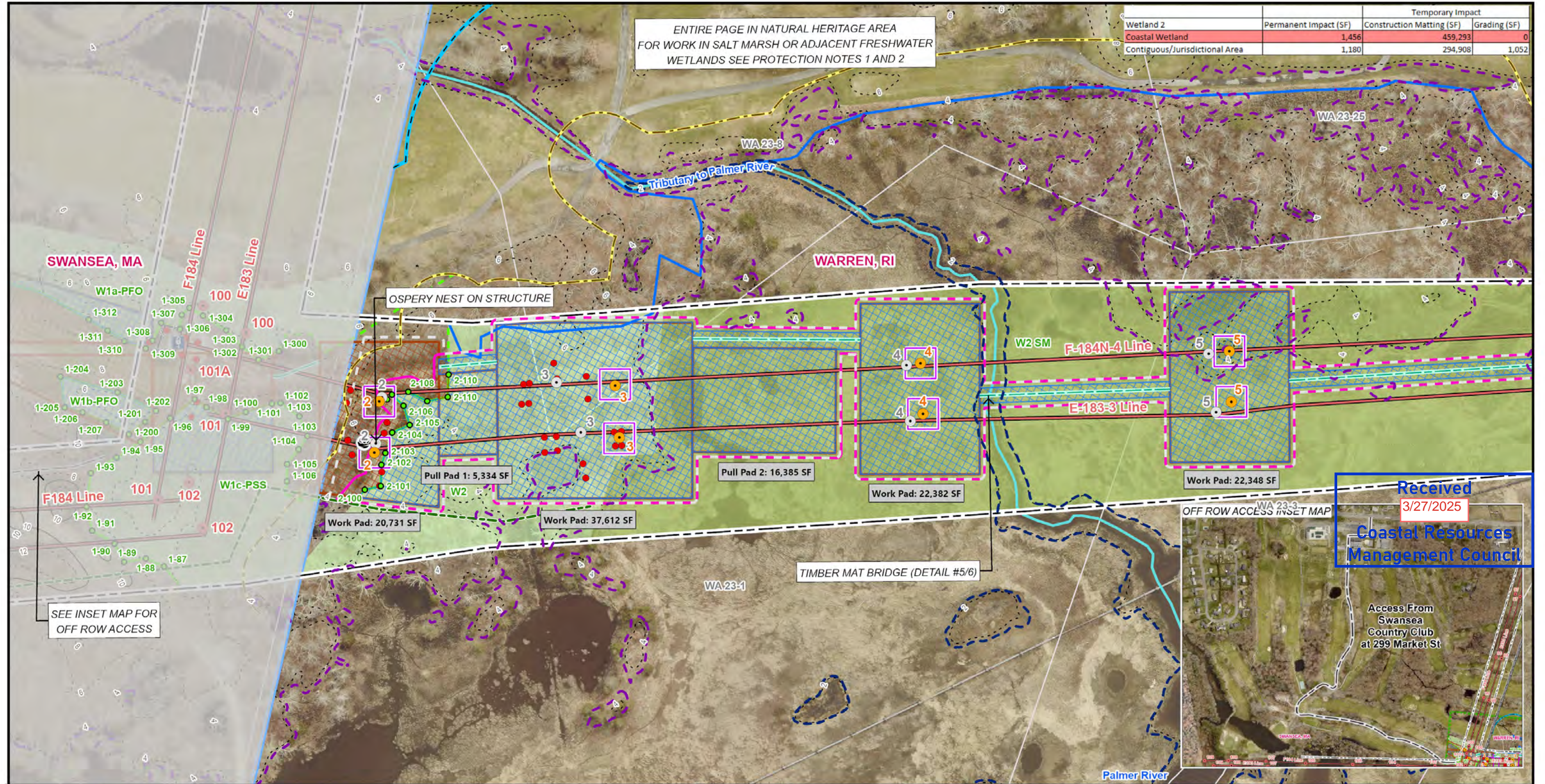
Revised: 2/5/2025  
Date: 11/15/2024



Source: MassGIS, RIGIS, National Grid, VHB





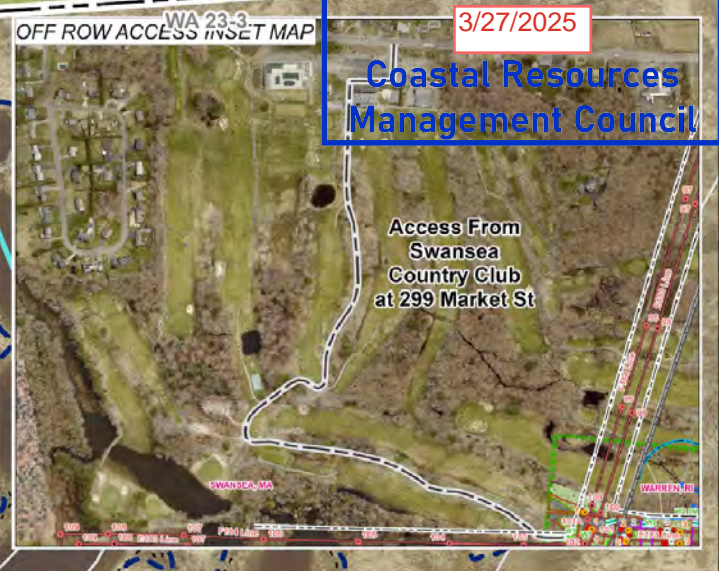


ENTIRE PAGE IN NATURAL HERITAGE AREA  
FOR WORK IN SALT MARSH OR ADJACENT FRESHWATER  
WETLANDS SEE PROTECTION NOTES 1 AND 2

| Wetland 2                      | Permanent Impact (SF) | Temporary Impact          |              |
|--------------------------------|-----------------------|---------------------------|--------------|
|                                |                       | Construction Matting (SF) | Grading (SF) |
| Coastal Wetland                | 1,456                 | 459,293                   | 0            |
| Contiguous/Jurisdictional Area | 1,180                 | 294,908                   | 1,052        |

SEE INSET MAP FOR  
OFF ROW ACCESS

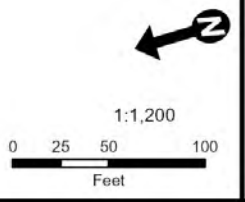
Received  
3/27/2025  
Coastal Resources  
Management Council



|  |   |   |   |  |
|--|---|---|---|--|
| <ul style="list-style-type: none"> <li>Existing Structure</li> <li>Proposed Structures</li> <li>Structure to be Replaced</li> <li>Structure to be Removed</li> <li>Existing Distribution Pole</li> <li>Existing Guy Wire Anchor</li> <li>Existing Transmission Line</li> <li>Proposed Transmission Line</li> <li>Overhead Line</li> <li>Approximate Right-of-Way</li> <li>Access Road (16' wide)</li> <li>Temporary Upland Matting Access</li> <li>Temporary Wetland Matting Access</li> <li>Surface with Crushed Stone then Revegetate Access</li> <li>Existing Gravel/Paved Driveway Access</li> <li>Existing Access - Refresh with Crushed Stone</li> </ul> | <ul style="list-style-type: none"> <li>Work Pad Type</li> <li>Temporary Upland Matting</li> <li>Temporary Wetland Matting</li> <li>Surface with crushed stone then revegetate</li> <li>Work Pad/Pull Pad</li> <li>Limit of Disturbance (LOD)</li> <li>Permit Area</li> <li>Permit Area/LOD</li> <li>Osprey Nest</li> <li>RINHP Species</li> <li>RIDEM Natural Heritage Area Polygon</li> <li>Rare Species from WLT</li> <li>Existing Tree Line</li> <li>Proposed Tree Line</li> <li>ASSF</li> <li>Proposed Jamie's Park Grass Swale</li> <li>Potential Dewatering Basin Location</li> </ul> | <ul style="list-style-type: none"> <li>Watercourse (Non Delineated)</li> <li>Buffer Zone</li> <li>Jurisdictional Area</li> <li>200' Contiguous Area</li> <li>CRMC 50' Setback</li> <li>Approximate Edge of Coastal Feature</li> <li>Wetland Flag</li> <li>Approximate Wetland Edge</li> <li>Delineated Wetland Edge</li> <li>Freshwater Wetland</li> <li>Salt Marsh</li> <li>Tree Clearing Area</li> <li>Mean High Water (2.12 feet) - Section 404/10 Boundary</li> <li>Highest Astronomical Tide (3.78 feet)</li> <li>1% Annual Chance Coastal SFHA</li> </ul> | <ul style="list-style-type: none"> <li>Gate</li> <li>Culvert</li> <li>Sewer Manhole</li> <li>Catch Basin With Siltbak</li> <li>Stabilized Construction Exit</li> <li>Erosion Control</li> <li>Stone Wall</li> <li>Fence</li> <li>Guardrail</li> <li>2-ft Contours</li> <li>10-ft Contours</li> <li>Hiking Trail</li> <li>Boardwalk</li> </ul> | <ul style="list-style-type: none"> <li>Wetland Jurisdiction Boundary</li> <li>Fee Parcel Boundary</li> <li>Parcel Boundary</li> <li>Town Boundary</li> </ul> |
|--|---|---|---|--|

### E183-3 and F184N-4/5 115kV Transmission Lines Asset Condition Refurbishment Project

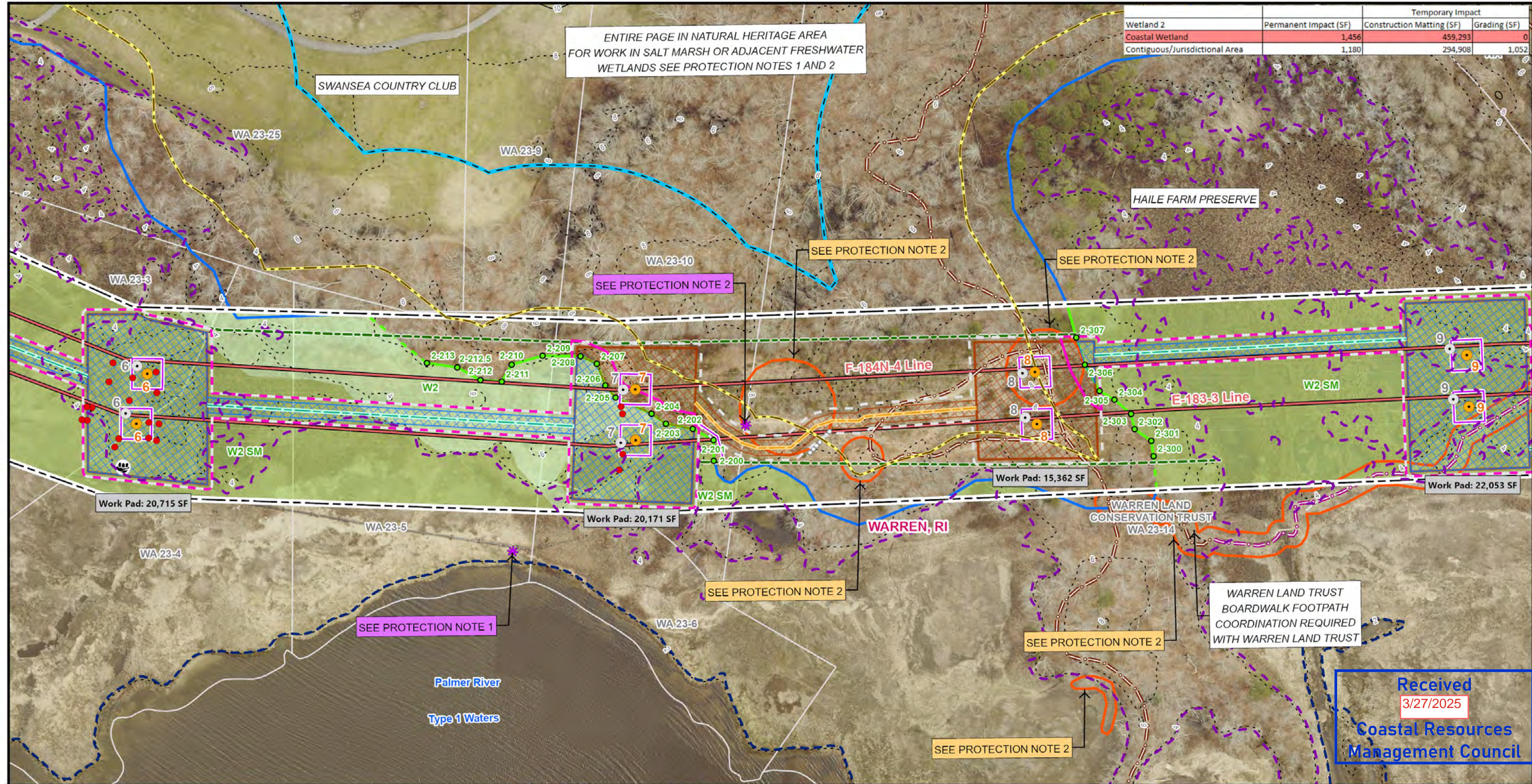
Site Access and BMP Plan  
Swansea, MA & Warren, RI





| Wetland 2                      | Permanent Impact (SF) | Temporary Impact          |              |
|--------------------------------|-----------------------|---------------------------|--------------|
|                                |                       | Construction Matting (SF) | Grading (SF) |
| Coastal Wetland                | 1,456                 | 459,293                   | 0            |
| Contiguous/Jurisdictional Area | 1,180                 | 294,908                   | 1,052        |

ENTIRE PAGE IN NATURAL HERITAGE AREA  
FOR WORK IN SALT MARSH OR ADJACENT FRESHWATER  
WETLANDS SEE PROTECTION NOTES 1 AND 2



Received  
3/27/2025  
Coastal Resources  
Management Council



|  |   |   |  |  |
|--|---|---|--|--|
| <ul style="list-style-type: none"> <li>Existing Structure</li> <li>Proposed Structures</li> <li>Structure to be Replaced</li> <li>Structure to be Removed</li> <li>Existing Distribution Pole</li> <li>Existing Guy Wire Anchor</li> <li>Existing Transmission Line</li> <li>Proposed Transmission Line</li> <li>Overhead Line</li> <li>Approximate Right-of-Way</li> <li>Access Road (16' wide)</li> <li>Temporary Upland Matting Access</li> <li>Temporary Wetland Matting Access</li> <li>Surface with Crushed Stone then Revegetate Access</li> <li>Existing Gravel/Paved Driveway Access</li> <li>Existing Access - Refresh with Crushed Stone</li> </ul> | <ul style="list-style-type: none"> <li>Work Pad Type</li> <li>Temporary Upland Matting</li> <li>Temporary Wetland Matting</li> <li>Surface with crushed stone then revegetate</li> <li>Work Pad/Pull Pad</li> <li>Limit of Disturbance (LOD)</li> <li>Permit Area</li> <li>Permit Area/LOD</li> <li>Osprey Nest</li> <li>RINHP Species</li> <li>RIDEM Natural Heritage Area Polygon</li> <li>Rare Species from WLT</li> <li>Existing Tree Line</li> <li>Proposed Tree Line</li> <li>ASSF</li> <li>Proposed Jamie's Park Grass Swale</li> <li>Potential Dewatering Basin Location</li> </ul> | <ul style="list-style-type: none"> <li>Watercourse (Non Delineated)</li> <li>Buffer Zone</li> <li>Jurisdictional Area</li> <li>200' Contiguous Area</li> <li>CRMC 50' Setback</li> <li>Approximate Edge of Coastal Feature</li> <li>Wetland Flag</li> <li>Approximate Wetland Edge</li> <li>Delineated Wetland Edge</li> <li>Freshwater Wetland</li> <li>Salt Marsh</li> <li>Tree Clearing Area</li> <li>Mean High Water (2.12 feet) - Section 404/10 Boundary</li> <li>Highest Astronomical Tide (3.78 feet)</li> <li>1% Annual Chance Coastal SFHA</li> </ul> | <ul style="list-style-type: none"> <li>Gate</li> <li>Culvert</li> <li>Sewer Manhole</li> <li>Catch Basin With Siltak</li> <li>Stabilized Construction Exit</li> <li>Erosion Control</li> <li>Stone Wall</li> <li>Fence</li> <li>Guardrail</li> <li>2-ft Contours</li> <li>10-ft Contours</li> <li>Hiking Trail</li> <li>Boardwalk</li> </ul> | <ul style="list-style-type: none"> <li>Wetland Jurisdiction Boundary</li> <li>Fee Parcel Boundary</li> <li>Parcel Boundary</li> <li>Town Boundary</li> </ul> |
|--|---|---|--|--|

**E183-3 and F184N-4/5 115kV Transmission Lines  
Asset Condition Refurbishment Project**

Site Access and BMP Plan  
Warren, RI

Page 5 of 21

Revised: 2/5/2025  
Date: 11/15/2024

Source: RIGIS, RI Energy, VHB

Rhode Island Energy™  
a PPL company

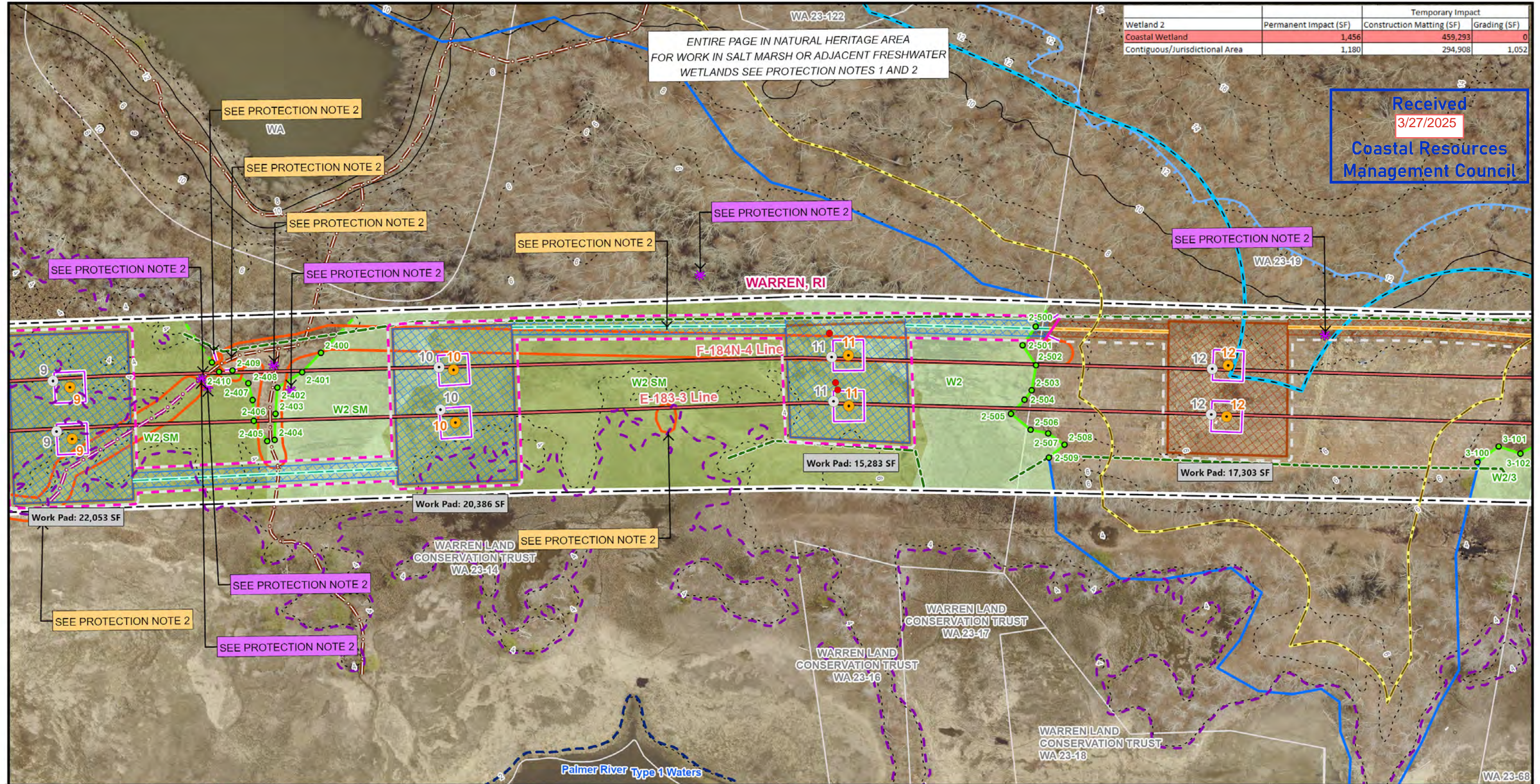
vhb



| Wetland 2                      | Permanent Impact (SF) | Temporary Impact          |              |
|--------------------------------|-----------------------|---------------------------|--------------|
|                                |                       | Construction Matting (SF) | Grading (SF) |
| Coastal Wetland                | 1,456                 | 459,293                   | 0            |
| Contiguous/Jurisdictional Area | 1,180                 | 294,908                   | 1,052        |

Received  
3/27/2025  
Coastal Resources  
Management Council

ENTIRE PAGE IN NATURAL HERITAGE AREA  
FOR WORK IN SALT MARSH OR ADJACENT FRESHWATER  
WETLANDS SEE PROTECTION NOTES 1 AND 2



|  |   |   |   |  |
|--|---|---|---|--|
| <ul style="list-style-type: none"> <li>Existing Structure</li> <li>Proposed Structures</li> <li>Structure to be Replaced</li> <li>Structure to be Removed</li> <li>Existing Distribution Pole</li> <li>Existing Guy Wire Anchor</li> <li>Existing Transmission Line</li> <li>Proposed Transmission Line</li> <li>Overhead Line</li> <li>Approximate Right-of-Way</li> <li>Access Road (16' wide)</li> <li>Temporary Upland Matting Access</li> <li>Temporary Wetland Matting Access</li> <li>Surface with Crushed Stone then Revegetate Access</li> <li>Existing Gravel/Paved Driveway Access</li> <li>Existing Access - Refresh with Crushed Stone</li> </ul> | <ul style="list-style-type: none"> <li>Work Pad Type</li> <li>Temporary Upland Matting</li> <li>Temporary Wetland Matting</li> <li>Surface with crushed stone then revegetate</li> <li>Work Pad/Pull Pad</li> <li>Limit of Disturbance (LOD)</li> <li>Permit Area</li> <li>Permit Area/LOD</li> <li>Osprey Nest</li> <li>RINHP Species</li> <li>RIDEM Natural Heritage Area Polygon</li> <li>Rare Species from WLT</li> <li>Existing Tree Line</li> <li>Proposed Tree Line</li> <li>ASSF</li> <li>Proposed Jamie's Park Grass Swale</li> <li>Potential Dewatering Basin Location</li> </ul> | <ul style="list-style-type: none"> <li>Watercourse (Non Delineated)</li> <li>Buffer Zone</li> <li>Jurisdictional Area</li> <li>200' Contiguous Area</li> <li>CRMC 50' Setback</li> <li>Approximate Edge of Coastal Feature</li> <li>Wetland Flag</li> <li>Approximate Wetland Edge</li> <li>Delineated Wetland Edge</li> <li>Freshwater Wetland</li> <li>Salt Marsh</li> <li>Tree Clearing Area</li> <li>Mean High Water (2.12 feet) - Section 404/10 Boundary</li> <li>Highest Astronomical Tide (3.78 feet)</li> <li>1% Annual Chance Coastal SFHA</li> </ul> | <ul style="list-style-type: none"> <li>Gate</li> <li>Culvert</li> <li>Sewer Manhole</li> <li>Catch Basin With Siltbak</li> <li>Stabilized Construction Exit</li> <li>Erosion Control</li> <li>Stone Wall</li> <li>Fence</li> <li>Guardrail</li> <li>2-ft Contours</li> <li>10-ft Contours</li> <li>Hiking Trail</li> <li>Boardwalk</li> </ul> | <ul style="list-style-type: none"> <li>Wetland Jurisdiction Boundary</li> <li>Fee Parcel Boundary</li> <li>Parcel Boundary</li> <li>Town Boundary</li> </ul> |
|--|---|---|---|--|

### E183-3 and F184N-4/5 115kV Transmission Lines Asset Condition Refurbishment Project

Site Access and BMP Plan  
Warren, RI

Revised: 2/5/2025  
Date: 11/15/2024



Source: RIGIS, RI Energy, VHB



| Wetland 2/3     |                       | Temporary Impact          |              |
|-----------------|-----------------------|---------------------------|--------------|
|                 | Permanent Impact (SF) | Construction Matting (SF) | Grading (SF) |
| Coastal Wetland | 0                     | 3,063                     | 0            |
| Contiguous Area | 77                    | 21,202                    | 0            |

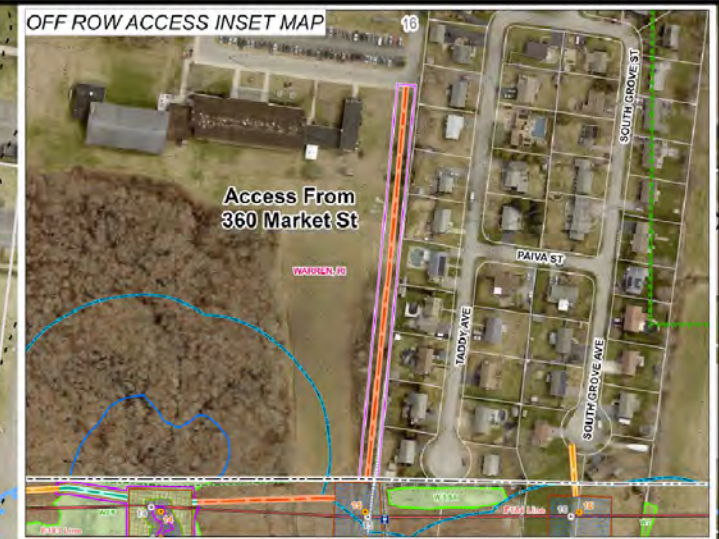
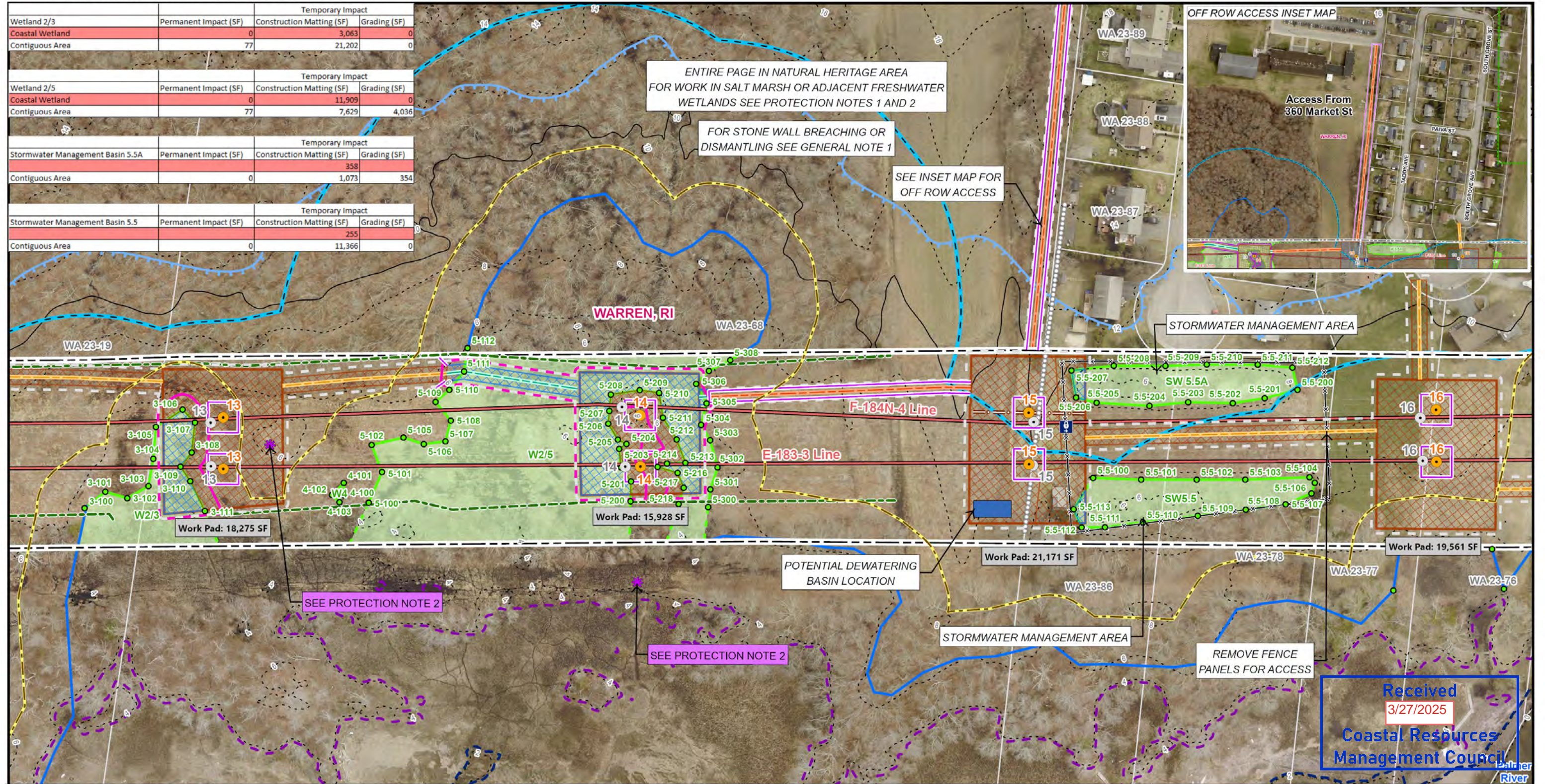
| Wetland 2/5     |                       | Temporary Impact          |              |
|-----------------|-----------------------|---------------------------|--------------|
|                 | Permanent Impact (SF) | Construction Matting (SF) | Grading (SF) |
| Coastal Wetland | 0                     | 11,909                    | 0            |
| Contiguous Area | 77                    | 7,629                     | 4,036        |

| Stormwater Management Basin 5.5A |                       | Temporary Impact          |              |
|----------------------------------|-----------------------|---------------------------|--------------|
|                                  | Permanent Impact (SF) | Construction Matting (SF) | Grading (SF) |
| Contiguous Area                  | 0                     | 358                       | 354          |

| Stormwater Management Basin 5.5 |                       | Temporary Impact          |              |
|---------------------------------|-----------------------|---------------------------|--------------|
|                                 | Permanent Impact (SF) | Construction Matting (SF) | Grading (SF) |
| Contiguous Area                 | 0                     | 255                       | 11,366       |



Received  
3/27/2025  
Coastal Resources  
Management Council

|  |   |   |   |  |
|--|---|---|---|--|
| <ul style="list-style-type: none"> <li>Existing Structure</li> <li>Proposed Structures</li> <li>Structure to be Replaced</li> <li>Structure to be Removed</li> <li>Existing Distribution Pole</li> <li>Existing Guy Wire Anchor</li> <li>Existing Transmission Line</li> <li>Proposed Transmission Line</li> <li>Overhead Line</li> <li>Approximate Right-of-Way</li> <li>Access Road (16' wide)</li> <li>Temporary Upland Matting Access</li> <li>Temporary Wetland Matting Access</li> <li>Surface with Crushed Stone then Revegetate Access</li> <li>Existing Gravel/Paved Driveway Access</li> <li>Existing Access - Refresh with Crushed Stone</li> </ul> | <ul style="list-style-type: none"> <li>Work Pad Type</li> <li>Temporary Upland Matting</li> <li>Temporary Wetland Matting</li> <li>Surface with crushed stone then revegetate</li> <li>Work Pad/Pull Pad</li> <li>Limit of Disturbance (LOD)</li> <li>Permit Area</li> <li>Permit Area/LOD</li> <li>Osprey Nest</li> <li>RINHP Species</li> <li>RIDEM Natural Heritage Area Polygon</li> <li>Rare Species from WLT</li> <li>Existing Tree Line</li> <li>Proposed Tree Line</li> <li>ASSF</li> <li>Proposed Jamie's Park Grass Swale</li> <li>Potential Dewatering Basin Location</li> </ul> | <ul style="list-style-type: none"> <li>Watercourse (Non Delineated)</li> <li>Buffer Zone</li> <li>Jurisdictional Area</li> <li>200' Contiguous Area</li> <li>CRMC 50' Setback</li> <li>Approximate Edge of Coastal Feature</li> <li>Wetland Flag</li> <li>Approximate Wetland Edge</li> <li>Delineated Wetland Edge</li> <li>Freshwater Wetland</li> <li>Salt Marsh</li> <li>Tree Clearing Area</li> <li>Mean High Water (2.12 feet) - Section 404/10 Boundary</li> <li>Highest Astronomical Tide (3.78 feet)</li> <li>1% Annual Chance Coastal SFHA</li> </ul> | <ul style="list-style-type: none"> <li>Gate</li> <li>Culvert</li> <li>Sewer Manhole</li> <li>Catch Basin With Siltstack</li> <li>Stabilized Construction Exit</li> <li>Erosion Control</li> <li>Stone Wall</li> <li>Fence</li> <li>Guardrail</li> <li>2-ft Contours</li> <li>10-ft Contours</li> <li>Hiking Trail</li> <li>Boardwalk</li> </ul> | <ul style="list-style-type: none"> <li>Wetland Jurisdiction Boundary</li> <li>Fee Parcel Boundary</li> <li>Parcel Boundary</li> <li>Town Boundary</li> </ul> |
|--|---|---|---|--|

### E183-3 and F184N-4/5 115kV Transmission Lines Asset Condition Refurbishment Project

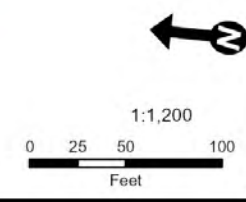
Site Access and BMP Plan  
Warren, RI

Page 7 of 21

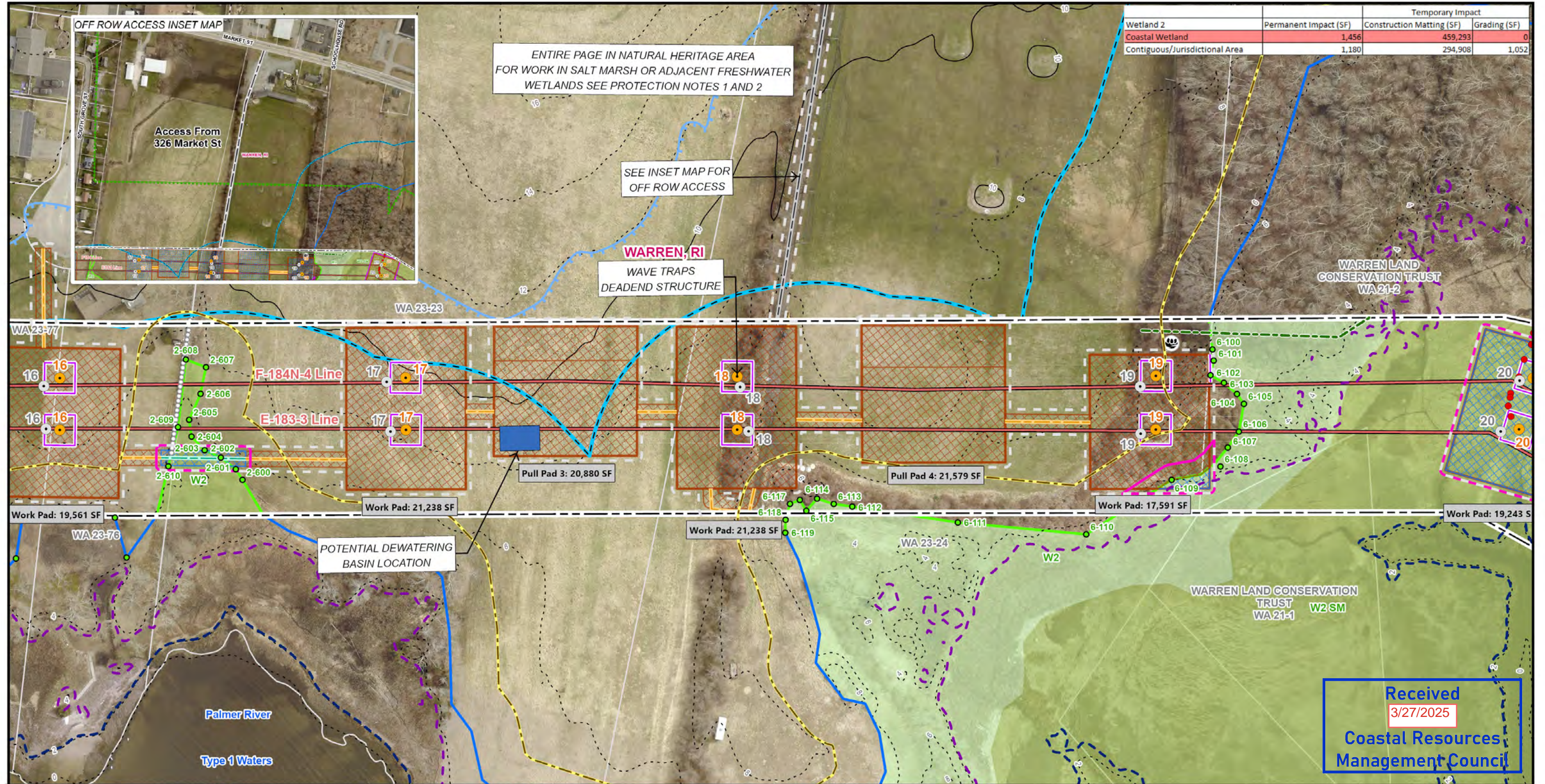
Revised: 2/5/2025  
Date: 11/15/2024

Source: RIGIS, RI Energy, VHB

Rhode Island Energy™  
a PPL company







Received  
3/27/2025  
Coastal Resources  
Management Council

|  |   |  |   |  |
|--|---|--|---|--|
| <ul style="list-style-type: none"> <li>Existing Structure</li> <li>Proposed Structures</li> <li>Structure to be Replaced</li> <li>Structure to be Removed</li> <li>Existing Distribution Pole</li> <li>Existing Guy Wire Anchor</li> <li>Existing Transmission Line</li> <li>Proposed Transmission Line</li> <li>Overhead Line</li> <li>Approximate Right-of-Way</li> <li>Access Road (16' wide)</li> <li>Temporary Upland Matting Access</li> <li>Temporary Wetland Matting Access</li> <li>Surface with Crushed Stone then Revegetate Access</li> <li>Existing Gravel/Paved Driveway Access</li> <li>Existing Access - Refresh with Crushed Stone</li> </ul> | <ul style="list-style-type: none"> <li>Work Pad Type</li> <li>Temporary Upland Matting</li> <li>Temporary Wetland Matting</li> <li>Surface with crushed stone then revegetate</li> <li>Work Pad/Pull Pad</li> <li>Limit of Disturbance (LOD)</li> <li>Permit Area</li> <li>Permit Area/LOD</li> <li>Osprey Nest</li> <li>RINHP Species</li> <li>RIDEM Natural Heritage Area Polygon</li> <li>Rare Species from WLT</li> <li>Existing Tree Line</li> <li>Proposed Tree Line</li> <li>ASSF</li> <li>Proposed Jamie's Park Grass Swale</li> <li>Potential Dewatering Basin Location</li> </ul> | <ul style="list-style-type: none"> <li>Watercourse (If not Delineated)</li> <li>Buffer Zone</li> <li>Jurisdictional Area</li> <li>200' Contiguous Area</li> <li>CRMC 50' Setback</li> <li>Approximate Edge of Coastal Feature</li> <li>Wetland Flag</li> <li>Approximate Wetland Edge</li> <li>Delineated Wetland Edge</li> <li>Freshwater Wetland</li> <li>Salt Marsh</li> <li>Tree Clearing Area</li> <li>Mean High Water (2.12 feet) - Section 404/10 Boundary</li> <li>Highest Astronomical Tide (3.78 feet)</li> <li>1% Annual Chance Coastal SFHA</li> </ul> | <ul style="list-style-type: none"> <li>Gate</li> <li>Culvert</li> <li>Sewer Manhole</li> <li>Catch Basin With Siltbak</li> <li>Stabilized Construction Exit</li> <li>Erosion Control</li> <li>Stone Wall</li> <li>Fence</li> <li>Guardrail</li> <li>2-ft Contours</li> <li>10-ft Contours</li> <li>Hiking Trail</li> <li>Boardwalk</li> </ul> | <ul style="list-style-type: none"> <li>Wetland Jurisdiction Boundary</li> <li>Fee Parcel Boundary</li> <li>Parcel Boundary</li> <li>Town Boundary</li> </ul> |
|--|---|--|---|--|

Scale: 1:1,200  
0 25 50 100 Feet

**E183-3 and F184N-4/5 115kV Transmission Lines**  
**Asset Condition Refurbishment Project**

Site Access and BMP Plan  
Warren, RI

Page 8 of 21

Revised: 2/5/2025  
Date: 11/15/2024

Source: RIGIS, RI Energy, VHB

Rhode Island Energy™  
a PPL company

vhb

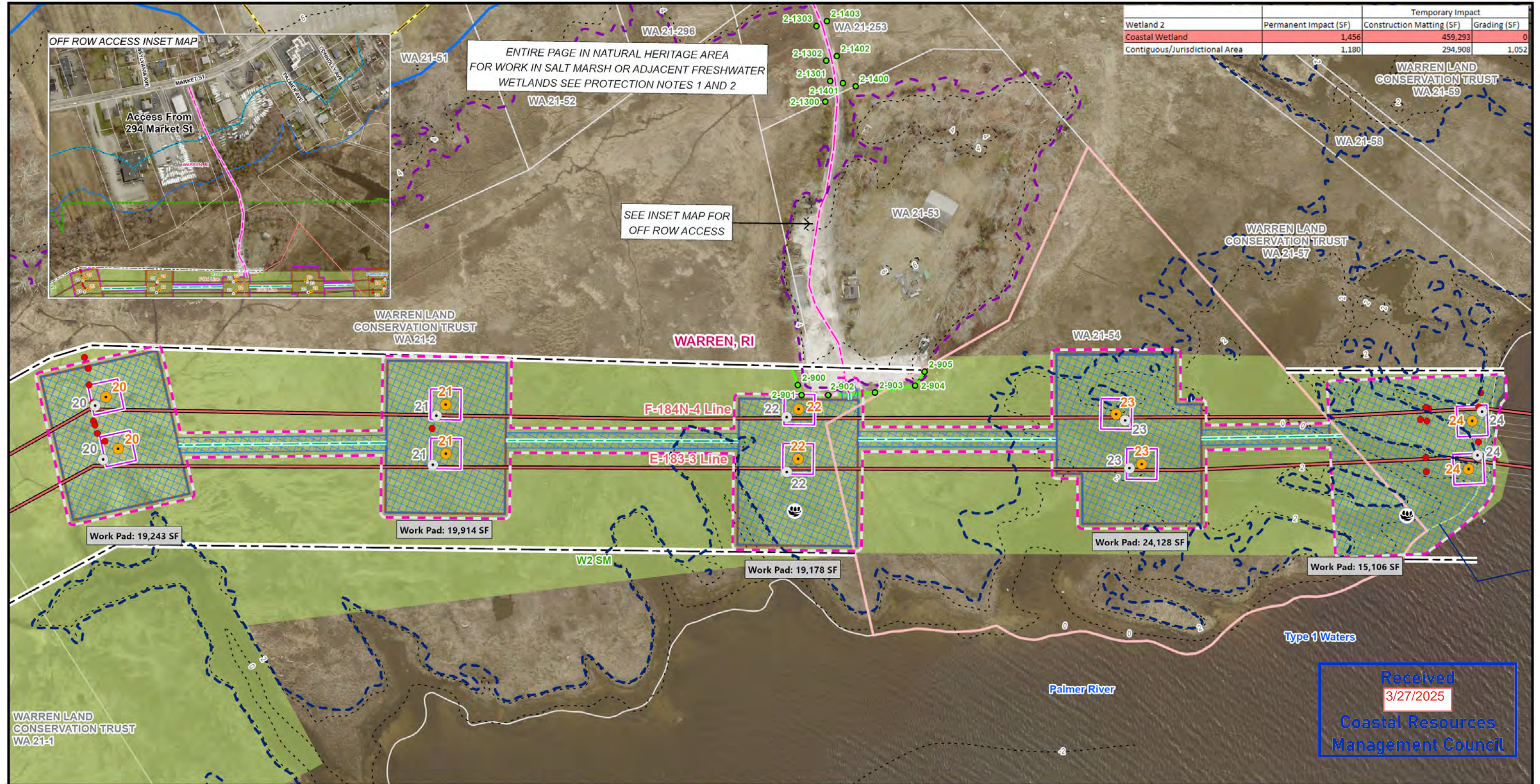


| Wetland 2                      | Permanent Impact (SF) | Temporary Impact          |              |
|--------------------------------|-----------------------|---------------------------|--------------|
|                                |                       | Construction Matting (SF) | Grading (SF) |
| Coastal Wetland                | 1,456                 | 459,293                   | 0            |
| Contiguous/Jurisdictional Area | 1,180                 | 294,908                   | 1,052        |



ENTIRE PAGE IN NATURAL HERITAGE AREA FOR WORK IN SALT MARSH OR ADJACENT FRESHWATER WETLANDS SEE PROTECTION NOTES 1 AND 2

SEE INSET MAP FOR OFF ROW ACCESS



Received  
3/27/2025  
Coastal Resources  
Management Council



|  |   |   |  |  |
|--|---|---|--|--|
| <ul style="list-style-type: none"> <li>Existing Structure</li> <li>Proposed Structures</li> <li>Structure to be Replaced</li> <li>Structure to be Removed</li> <li>Existing Distribution Pole</li> <li>Existing Guy Wire Anchor</li> <li>Existing Transmission Line</li> <li>Proposed Transmission Line</li> <li>Overhead Line</li> <li>Approximate Right-of-Way</li> <li>Access Road (16' wide)</li> <li>Temporary Upland Matting Access</li> <li>Temporary Wetland Matting Access</li> <li>Surface with Crushed Stone then Revegetate Access</li> <li>Existing Gravel/Paved Driveway Access</li> <li>Existing Access - Refresh with Crushed Stone</li> </ul> | <ul style="list-style-type: none"> <li>Work Pad Type</li> <li>Temporary Upland Matting</li> <li>Temporary Wetland Matting</li> <li>Surface with crushed stone then revegetate</li> <li>Work Pad/Pull Pad</li> <li>Limit of Disturbance (LOD)</li> <li>Permit Area</li> <li>Permit Area/LOD</li> <li>Osprey Nest</li> <li>RINHP Species</li> <li>RIDEM Natural Heritage Area Polygon</li> <li>Rare Species from WLT</li> <li>Existing Tree Line</li> <li>Proposed Tree Line</li> <li>ASSF</li> <li>Proposed Jamie's Park Grass Swale</li> <li>Potential Dewatering Basin Location</li> </ul> | <ul style="list-style-type: none"> <li>Watercourse (Non Delineated)</li> <li>Buffer Zone</li> <li>Jurisdictional Area</li> <li>200' Contiguous Area</li> <li>CRMC 50' Setback</li> <li>Approximate Edge of Coastal Feature</li> <li>Wetland Flag</li> <li>Approximate Wetland Edge</li> <li>Delineated Wetland Edge</li> <li>Freshwater Wetland</li> <li>Salt Marsh</li> <li>Tree Clearing Area</li> <li>Mean High Water (2.12 feet) - Section 404/10 Boundary</li> <li>Highest Astronomical Tide (3.78 feet)</li> <li>1% Annual Chance Coastal SFHA</li> </ul> | <ul style="list-style-type: none"> <li>Gate</li> <li>Culvert</li> <li>Sewer Manhole</li> <li>Catch Basin With Siltbait</li> <li>Stabilized Construction Exit</li> <li>Erosion Control</li> <li>Stone Wall</li> <li>Fence</li> <li>Guardrail</li> <li>2-ft Contours</li> <li>10-ft Contours</li> <li>Hiking Trail</li> <li>Boardwalk</li> </ul> | <ul style="list-style-type: none"> <li>Wetland Jurisdiction Boundary</li> <li>Fee Parcel Boundary</li> <li>Parcel Boundary</li> <li>Town Boundary</li> </ul> |
|--|---|---|--|--|

### E183-3 and F184N-4/5 115kV Transmission Lines Asset Condition Refurbishment Project

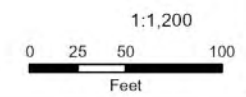
Site Access and BMP Plan  
Warren, RI

Page 9 of 21

Revised: 2/5/2025  
Date: 11/15/2024

Source: RIGIS, RI Energy, VHB

Rhode Island Energy™  
a PPL company







ENTIRE PAGE IN NATURAL HERITAGE AREA FOR WORK IN SALT MARSH OR ADJACENT FRESHWATER WETLANDS SEE PROTECTION NOTES 1 AND 2

PROPOSE TO TOP WITH OSPREY PLATFORM ON OLD POLE

OSPREY NEST ON STRUCTURE

OSPREY NEST ON STRUCTURE

PROPOSED OSPREY PLATFORM ON OLD CENTER POLE

Received 3/27/2025 Coastal Resources Management Council

| Wetland 2                      | Permanent Impact (SF) | Temporary Impact          |              |
|--------------------------------|-----------------------|---------------------------|--------------|
|                                |                       | Construction Matting (SF) | Grading (SF) |
| Coastal Wetland                | 1,456                 | 459,293                   | 0            |
| Contiguous/Jurisdictional Area | 1,180                 | 294,908                   | 1,052        |



|  |   |  |   |  |
|--|---|--|---|--|
| <ul style="list-style-type: none"> <li>Existing Structure</li> <li>Proposed Structures</li> <li>Structure to be Replaced</li> <li>Structure to be Removed</li> <li>Existing Distribution Pole</li> <li>Existing Guy Wire Anchor</li> <li>Existing Transmission Line</li> <li>Proposed Transmission Line</li> <li>Overhead Line</li> <li>Approximate Right-of-Way</li> <li>Access Road (16' wide)</li> <li>Temporary Upland Matting Access</li> <li>Temporary Wetland Matting Access</li> <li>Surface with Crushed Stone then Revegetate Access</li> <li>Existing Gravel/Paved Driveway Access</li> <li>Existing Access - Refresh with Crushed Stone</li> </ul> | <ul style="list-style-type: none"> <li>Work Pad Type</li> <li>Temporary Upland Matting</li> <li>Temporary Wetland Matting</li> <li>Surface with crushed stone then revegetate</li> <li>Work Pad/Pull Pad</li> <li>Limit of Disturbance (LOD)</li> <li>Permit Area</li> <li>Permit Area/LOD</li> <li>Osprey Nest</li> <li>RINHP Species</li> <li>RIDEM Natural Heritage Area Polygon</li> <li>Rare Species from WLT</li> <li>Existing Tree Line</li> <li>Proposed Tree Line</li> <li>ASSF</li> <li>Proposed Jamie's Park Grass Swale</li> <li>Potential Dewatering Basin Location</li> </ul> | <ul style="list-style-type: none"> <li>Watercourse (If not Delineated)</li> <li>Buffer Zone</li> <li>Jurisdictional Area</li> <li>200' Contiguous Area</li> <li>CRMC 50' Setback</li> <li>Approximate Edge of Coastal Feature</li> <li>Wetland Flag</li> <li>Approximate Wetland Edge</li> <li>Delineated Wetland Edge</li> <li>Freshwater Wetland</li> <li>Salt Marsh</li> <li>Tree Clearing Area</li> <li>Mean High Water (2.12 feet) - Section 404/10 Boundary</li> <li>Highest Astronomical Tide (3.78 feet)</li> <li>1% Annual Chance Coastal SFHA</li> </ul> | <ul style="list-style-type: none"> <li>Gate</li> <li>Culvert</li> <li>Sewer Manhole</li> <li>Catch Basin With Siltbak</li> <li>Stabilized Construction Exit</li> <li>Erosion Control</li> <li>Stone Wall</li> <li>Fence</li> <li>Guardrail</li> <li>2-ft Contours</li> <li>10-ft Contours</li> <li>Hiking Trail</li> <li>Boardwalk</li> </ul> | <ul style="list-style-type: none"> <li>Wetland Jurisdiction Boundary</li> <li>Fee Parcel Boundary</li> <li>Parcel Boundary</li> <li>Town Boundary</li> </ul> |
|--|---|--|---|--|

### E183-3 and F184N-4/5 115kV Transmission Lines Asset Condition Refurbishment Project

Site Access and BMP Plan  
Warren, RI

Page 10 of 21

Revised: 2/5/2025  
Date: 11/15/2024

Source: RIGIS, RI Energy, VHB

Rhode Island Energy™  
a PPL company



| Wetland 2                      | Permanent Impact (SF) | Temporary Impact          |              |
|--------------------------------|-----------------------|---------------------------|--------------|
|                                |                       | Construction Matting (SF) | Grading (SF) |
| Coastal Wetland                | 1,456                 | 459,293                   | 0            |
| Contiguous/Jurisdictional Area | 1,180                 | 294,908                   | 1,052        |

ENTIRE PAGE IN NATURAL HERITAGE AREA  
FOR WORK IN SALT MARSH OR ADJACENT FRESHWATER  
WETLANDS SEE PROTECTION NOTES 1 AND 2



Received  
3/27/2025  
Coastal Resources  
Management Council

GRASS SWALE ASSOCIATED WITH JAMIEL'S PARK SHORELINE RESTORATION PROJECT. REFER TO "OVERALL SITE ACCESS, CAPPING AND GRADING PLAN" BY FUSS & O'NEILL DATED APRIL 2018.



|  |  |  |   |  |
|--|--|--|---|--|
| <ul style="list-style-type: none"> <li>Existing Structure</li> <li>Proposed Structures</li> <li>Structure to be Replaced</li> <li>Structure to be Removed</li> <li>Existing Distribution Pole</li> <li>Existing Guy Wire Anchor</li> <li>Existing Transmission Line</li> <li>Proposed Transmission Line</li> <li>Overhead Line</li> <li>Approximate Right-of-Way</li> <li>Access Road (16' wide)</li> <li>Temporary Upland Matting Access</li> <li>Temporary Wetland Matting Access</li> <li>Surface with Crushed Stone then Revegetate Access</li> <li>Existing Gravel/Paved Driveway Access</li> <li>Existing Access - Refresh with Crushed Stone</li> </ul> | <ul style="list-style-type: none"> <li>Work Pad Type</li> <li>Temporary Upland Matting</li> <li>Temporary Wetland Matting</li> <li>Surface with crushed stone then revegetate</li> <li>Work Pad/Pull Pad</li> <li>Limit of Disturbance (LOD)</li> <li>Permit Area</li> <li>Permit Area/LOD</li> <li>Osprey Nest</li> <li>RINHP Species</li> <li>RIDEM Natural Heritage Area Polygon</li> <li>Rare Species from WLT</li> <li>Existing Tree Line</li> <li>Proposed Tree Line</li> <li>ASSF</li> <li>Proposed Jamiel's Park Grass Swale</li> <li>Potential Dewatering Basin Location</li> </ul> | <ul style="list-style-type: none"> <li>Watercourse (Iron Delineated)</li> <li>Buffer Zone</li> <li>Jurisdictional Area</li> <li>200' Contiguous Area</li> <li>CRMC 50' Setback</li> <li>Approximate Edge of Coastal Feature</li> <li>Wetland Flag</li> <li>Approximate Wetland Edge</li> <li>Delineated Wetland Edge</li> <li>Freshwater Wetland</li> <li>Salt Marsh</li> <li>Tree Clearing Area</li> <li>Mean High Water (2.12 feet) - Section 404/10 Boundary</li> <li>Highest Astronomical Tide (3.78 feet)</li> <li>1% Annual Chance Coastal SFHA</li> </ul> | <ul style="list-style-type: none"> <li>Gate</li> <li>Culvert</li> <li>Sewer Manhole</li> <li>Catch Basin With Siltbak</li> <li>Stabilized Construction Exit</li> <li>Erosion Control</li> <li>Stone Wall</li> <li>Fence</li> <li>Guardrail</li> <li>2-ft Contours</li> <li>10-ft Contours</li> <li>Hiking Trail</li> <li>Boardwalk</li> </ul> | <ul style="list-style-type: none"> <li>Wetland Jurisdiction Boundary</li> <li>Fee Parcel Boundary</li> <li>Parcel Boundary</li> <li>Town Boundary</li> </ul> |
|--|--|--|---|--|

**E183-3 and F184N-4/5 115kV Transmission Lines**  
**Asset Condition Refurbishment Project**

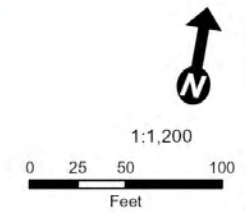
Site Access and BMP Plan  
Warren, RI

Page 11 of 21

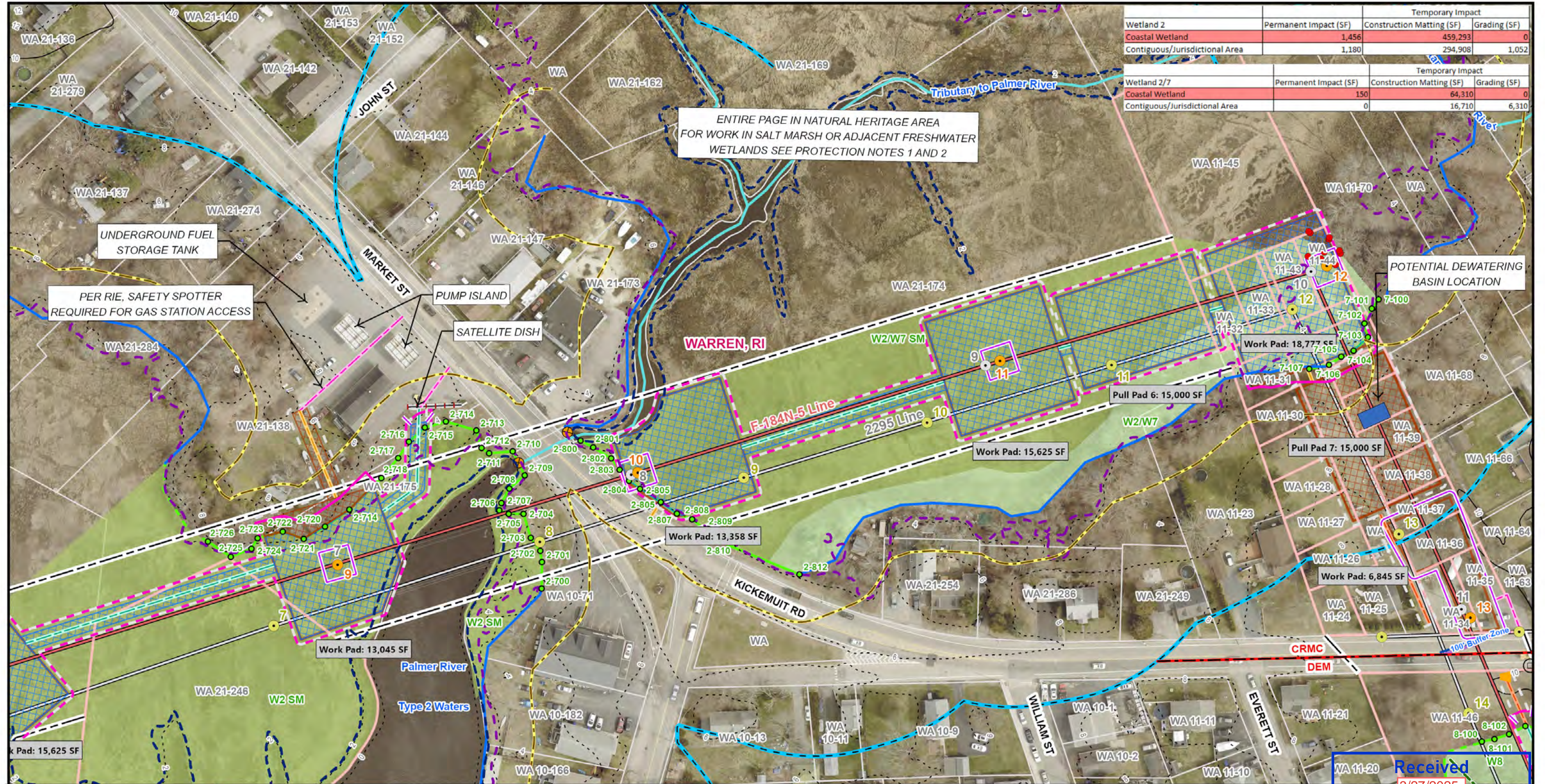
Revised: 2/5/2025  
Date: 11/15/2024

Source: RIGIS, RI Energy, VHB

Rhode Island Energy™  
a PPL company







| Wetland 2                      | Temporary Impact      |                           |              |
|--------------------------------|-----------------------|---------------------------|--------------|
|                                | Permanent Impact (SF) | Construction Matting (SF) | Grading (SF) |
| Coastal Wetland                | 1,456                 | 459,293                   | 0            |
| Contiguous/Jurisdictional Area | 1,180                 | 294,908                   | 1,052        |

| Wetland 2/7                    | Temporary Impact      |                           |              |
|--------------------------------|-----------------------|---------------------------|--------------|
|                                | Permanent Impact (SF) | Construction Matting (SF) | Grading (SF) |
| Coastal Wetland                | 150                   | 64,310                    | 0            |
| Contiguous/Jurisdictional Area | 0                     | 16,710                    | 6,310        |

|  |   |   |   |  |
|--|---|---|---|--|
| <ul style="list-style-type: none"> <li>Existing Structure</li> <li>Proposed Structures</li> <li>Structure to be Replaced</li> <li>Structure to be Removed</li> <li>Existing Distribution Pole</li> <li>Existing Guy Wire Anchor</li> <li>Existing Transmission Line</li> <li>Proposed Transmission Line</li> <li>Overhead Line</li> <li>Approximate Right-of-Way</li> <li>Access Road (16' wide)</li> <li>Temporary Upland Matting Access</li> <li>Temporary Wetland Matting Access</li> <li>Surface with Crushed Stone then Revegetate Access</li> <li>Existing Gravel/Paved Driveway Access</li> <li>Existing Access - Refresh with Crushed Stone</li> </ul> | <ul style="list-style-type: none"> <li>Work Pad Type</li> <li>Temporary Upland Matting</li> <li>Temporary Wetland Matting</li> <li>Surface with crushed stone then revegetate</li> <li>Work Pad/Pull Pad</li> <li>Limit of Disturbance (LOD)</li> <li>Permit Area</li> <li>Permit Area/LOD</li> <li>Osprey Nest</li> <li>RINHP Species</li> <li>RIDEM Natural Heritage Area Polygon</li> <li>Rare Species from WLT</li> <li>Existing Tree Line</li> <li>Proposed Tree Line</li> <li>ASSF</li> <li>Proposed Jamie's Park Grass Swale</li> <li>Potential Dewatering Basin Location</li> </ul> | <ul style="list-style-type: none"> <li>Watercourse (Non Delineated)</li> <li>Buffer Zone</li> <li>Jurisdictional Area</li> <li>200' Contiguous Area</li> <li>CRMC 50' Setback</li> <li>Approximate Edge of Coastal Feature</li> <li>Wetland Flag</li> <li>Approximate Wetland Edge</li> <li>Delineated Wetland Edge</li> <li>Freshwater Wetland</li> <li>Salt Marsh</li> <li>Tree Clearing Area</li> <li>Mean High Water (2.12 feet) - Section 404/10 Boundary</li> <li>Highest Astronomical Tide (3.78 feet)</li> <li>1% Annual Chance Coastal SFHA</li> </ul> | <ul style="list-style-type: none"> <li>Gate</li> <li>Culvert</li> <li>Sewer Manhole</li> <li>Catch Basin With Siltbak</li> <li>Stabilized Construction Exit</li> <li>Erosion Control</li> <li>Stone Wall</li> <li>Fence</li> <li>Guardrail</li> <li>2-ft Contours</li> <li>10-ft Contours</li> <li>Hiking Trail</li> <li>Boardwalk</li> </ul> | <ul style="list-style-type: none"> <li>Wetland Jurisdiction Boundary</li> <li>Fee Parcel Boundary</li> <li>Parcel Boundary</li> <li>Town Boundary</li> </ul> |
|--|---|---|---|--|

## E183-3 and F184N-4/5 115kV Transmission Lines

### Asset Condition Refurbishment Project

Site Access and BMP Plan  
Warren, RI

Page 12 of 21

Revised: 2/5/2025  
Date: 11/15/2024

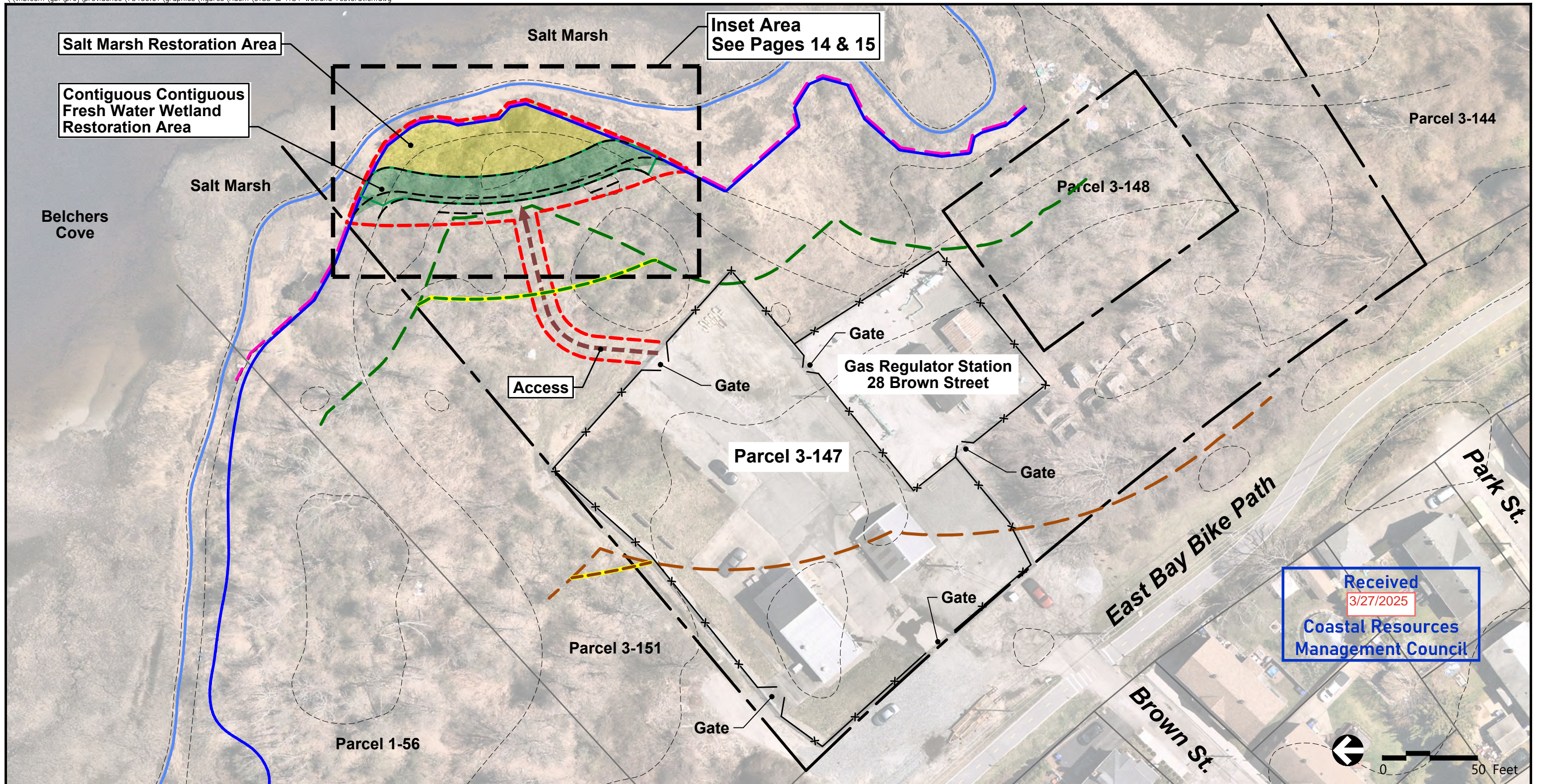
Received  
3/27/2025

Coastal Resources  
Management Council  
a PPL company

1:1,200

Source: RIGIS, RI Energy, VHB





Salt Marsh Restoration Area

Contiguous Fresh Water Wetland Restoration Area

Inset Area See Pages 14 & 15

Received  
3/27/2025  
Coastal Resources  
Management Council

- x— Chain Link Fence
- Edge of Existing Fill
- Mean High Water (MHW)=2.12'
- High Astronomical Tide (HAT)=3.78'
- CRMC 50' Set Back
- CRMC 200' Contiguous Area
- Site Property Line
- 2 Foot Contours (2011 Lidar)
- Limit of Disturbance/ Temporary Compost Filter Sock
- ← Access
- Proposed Contour
- Proposed CRMC 50' Set Back
- Proposed CRMC 200' Contiguous Area
- Approximate Salt Marsh Restoration Area
- Approximate Contiguous Freshwater Wetland Restoration Area

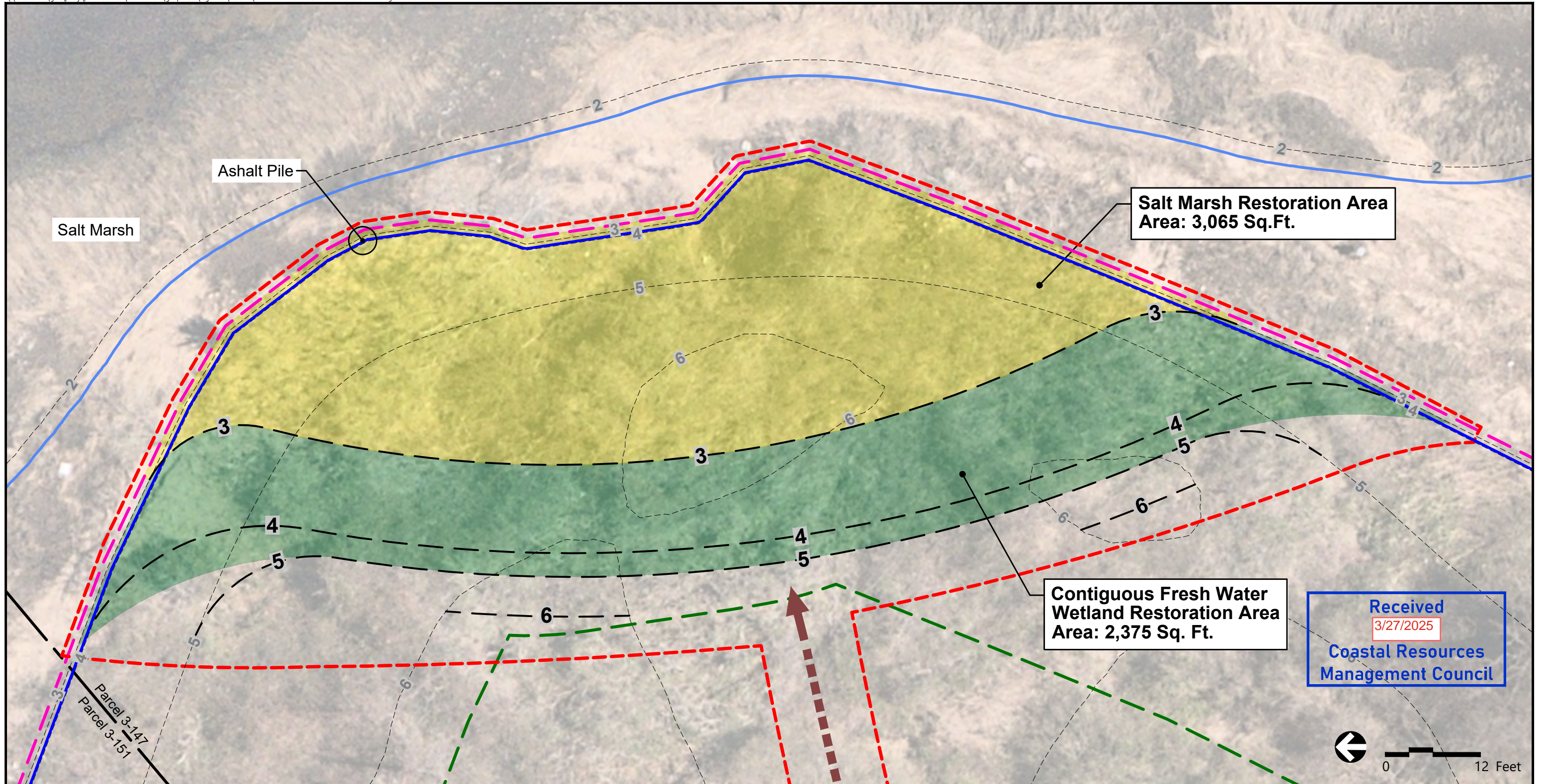
NOTES:  
1. The entire project area is within Coastal SFHA AE Zone (BFE 13).  
2. The entire project area is within the 200-ft Contiguous Area

**E183-3 and F184N-4/5 115kV Transmission Lines  
Asset Condition Refurbishment Project**

Proposed Restoration Plan  
Warren, RI







Received  
3/27/2025  
Coastal Resources  
Management Council

- x— Chain Link Fence
- Edge of Existing Fill
- Mean High Water (MHW)=2.12'
- High Astronomical Tide (HAT)=3.78'
- CRMC 50' Set Back
- Site Property Line
- - - 2 Foot Contours (2011 Lidar)
- Limit of Disturbance/ Temporary Compost Filter Sock
- ← Access
- Proposed Contour
- Approximate Salt Marsh Restoration Area
- Approximate Contiguous Freshwater Wetland Restoration Area

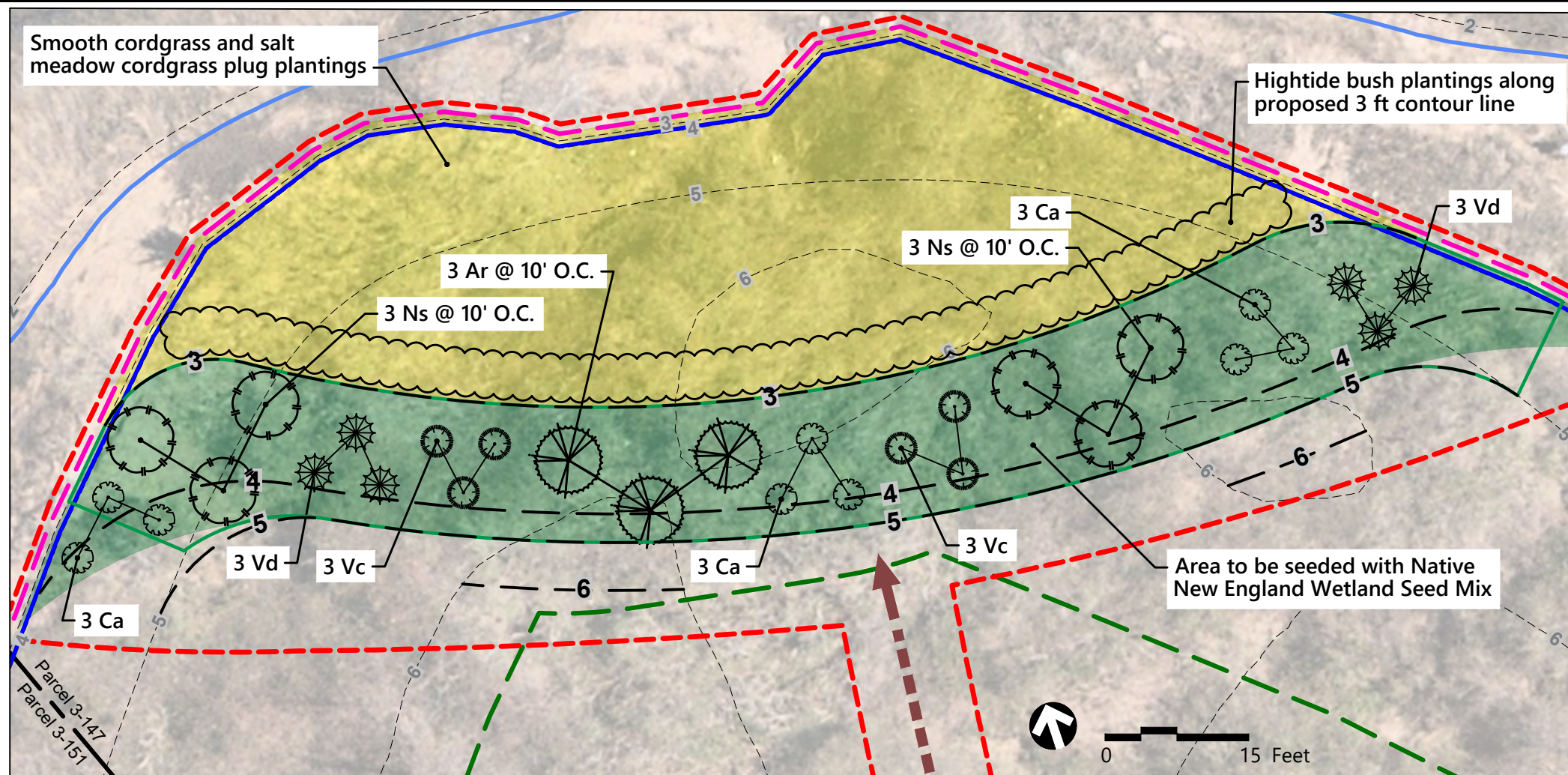
NOTES:  
1. The entire project area is within Coastal SFHA AE Zone (BFE 13).  
2. The entire project area is within the 200-ft Contiguous Area

**E183-3 and F184N-4/5 115kV Transmission Lines**  
**Asset Condition Refurbishment Project**

Proposed Restoration Plan  
Warren, RI







**SEEDING NOTES**

**NEW ENGLAND WETMIX TO BE USED WITHIN CONTIGUOUS FRESHWATER WETLAND RESTORATION AREA.**

From New England Wetland Plants, Inc. Amherst, Massachusetts

**Seeding:** Always apply on clean bare soil. The wetland seeds in this mix can be hand sown, used with a hand-held spreader, or hydro-seeded on large or hard to reach sites, as long as there is no permanent snow cover. Lightly rake to ensure proper soil-seed contact. Seeding can take place on frozen soil, as the freezing, thawing weather of late fall and late winter will work the seed into the soil. If spring conditions are drier than usual, watering may be required. If planting during the summer months, watering may be required for at least 2-3 weeks after planting to ensure germination. A non-invasive annual such as Winter Rye may be added to the mix to obtain soil stabilization cover in the fall. Do not add Annual Ryegrass, Kentucky Bluegrass or Perennial Ryegrass as these species are very aggressive and they will inhibit the growth of the wetland seeds. A light mulch of clean, weed free straw is recommended.

**Note:** Seeds will not germinate under inundated conditions. Not all species will grow in all wetland situations.

Application Rate: 1 LB/2500 SQ. FT.

**Typical Species:** Fox Sedge (*Carex vulpinoidea*), Sallow Sedge (*Carex lurida*), Broom Sedge (*Carex scoparia*), Sensitive Fern (*Onoclea sensibilis*), Blue Vervain (*Verbena hastata*), Hop Sedge (*Carex lupulina*), Dark-Green Bulrush (*Scirpus atrovirens*), Nodding Bur-Marigold (*Bidens cernua*), Bristly Sedge (*Carex comosa*), Fringed Sedge (*Carex crinita*), Tall Mannagrass (*Glyceria grandis*), Wool-Grass (*Scirpus cyperinus*), Soft Rush (*Juncus effusus*), Spotted Joe-Pye-Weed (*Eutrochium maculatum*), Boneset (*Eupatorium perfoliatum*), American Water-Plantain (*Alisma subcordatum*), New England Aster (*Symphotrichum novae-angliae*), Rattlesnake Mannagrass (*Glyceria canadensis*), Purple-Stem Aster (*Symphotrichum puniceum*), Soft-Stemmed Bulrush (*Schoenoplectus tabernaemontani*), Blueflag (*Iris versicolor*), Swamp Milkweed (*Asclepias incarnata*), and Allegheny Monkey-Flower (*Mimulus ringens*).

**Planting Schedule**

| Trees | Scientific Name        | Common Name  | Height | Quantity |
|-------|------------------------|--------------|--------|----------|
| Ns    | <i>Nyssa sylvatica</i> | Black tupelo | 6'     | 6        |
| Ar    | <i>Acer rubrum</i>     | Red Maple    | 6'     | 3        |

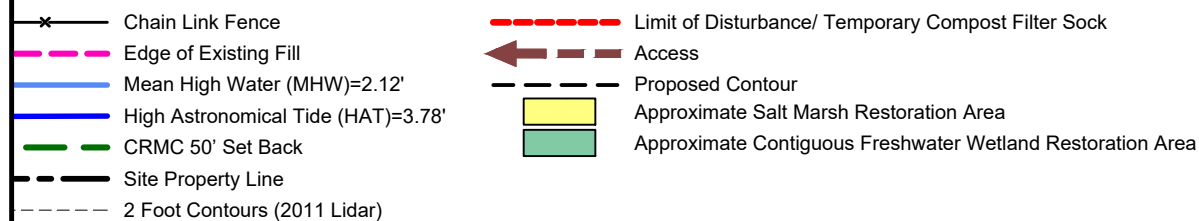
  

| Shrubs | Scientific Name             | Common Name        | Height / Pot Size | Quantity |
|--------|-----------------------------|--------------------|-------------------|----------|
| Vd     | <i>Viburnum dentatum</i>    | Arrowwood viburnum | 18"-24"/ 3 Gallon | 6        |
| Vc     | <i>Vaccinium corymbosum</i> | Highbush blueberry | 18"-24"/ 3 Gallon | 6        |
| Ca     | <i>Cornus amomum</i>        | Silky dogwood      | 18"-24"/ 3 Gallon | 9        |

**RESTORATION PLANTING REQUIREMENTS**

- A. Immediately Prior to the commencement of restoration involving soil removal, install a continuous uninterrupted line of staked compost filter sock (CFS)/ Silt Soxx between the undisturbed wetland and the edge of existing fill material to be removed.
- B. Remove all fill in the area noted above down to proposed grade. This should be apparent when the layer of peat or a darker loam under this fill is encountered. Where no peat is found the area will be over excavated 12 inches then supplemented with 12 inches of medium to fine sand mixed with organics. All fill material which is removed must be deposited outside any and all wetlands.
- C. Proposed grades in salt marsh must be stabilized with salt marsh species plugs planted 2-3 feet on center. Proposed grades in contiguous freshwater wetland must be stabilized with a native New England wetland conservation seed mix and by mulching all disturbed area with straw.
- D. Plant the contiguous freshwater wetland restoration area with trees and shrubs per the table noted below. Balled and burlapped or transplanted tree species

- E. If any or all of the required plantings fail to survive at least one full growing season from the time they have been planted, they shall be replaced until such time that survival is maintained over one full growing season.
- F. All disturbed areas in the 200-foot Contiguous Area must be allowed to revegetate to a natural wild state.
- G. Upon stabilization of all disturbed areas, all erosion and sedimentation controls must be removed from the salt marsh restoration area and contiguous freshwater wetland restoration area and the 200-foot Contiguous Area prior to the removal of the controls, all accumulated sediment must be removed to a suitable upland area.
- H. Allow the restored and replanted area to revert to a natural wild state.



- NOTES:**
- The entire project area is within Coastal SFHA AE Zone (BFE 13).
  - The entire project area is within the 200-ft Contiguous Area

**E183-3 and F184N-4/5 115kV Transmission Lines  
Asset Condition Refurbishment Project**

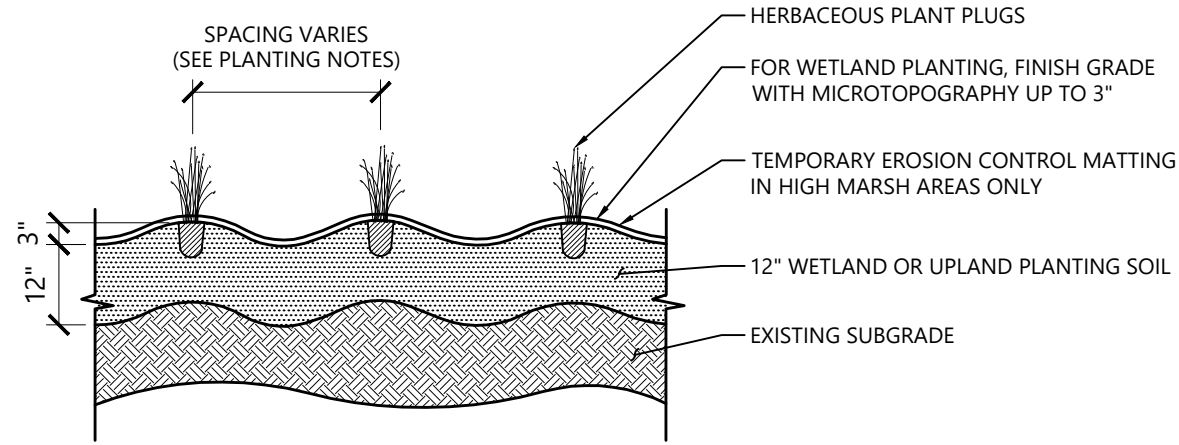
Restoration Planting Plan  
Warren, RI

Page 15 of 21

Date: 11/01/2024







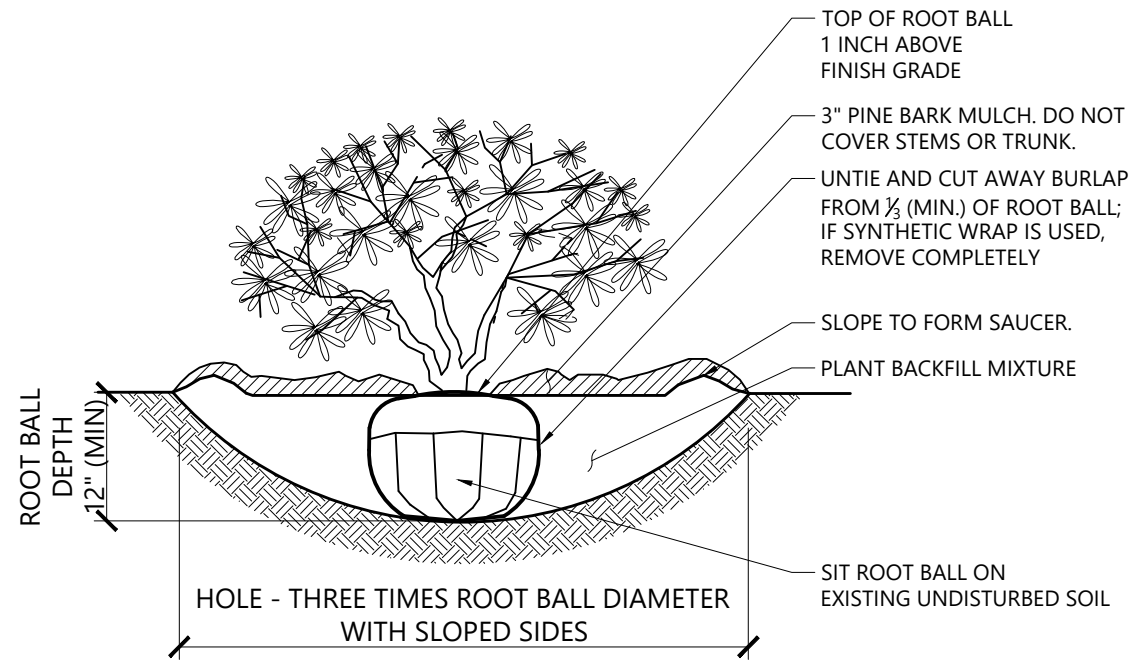
NOTE:  
FOR BROADLEAF FLOOD PLAIN AND HIGH MARSH, SEED AREA IN ADDITION TO INSTALLING PLUGS.

### Herbaceous Plant Plugs

10/24

N.T.S.

Source: VHB



NOTE:  
LOOSEN ROOTS AT THE OUTER EDGE OF ROOTBALL OF CONTAINER GROWN SHRUBS.

### Shrub Planting

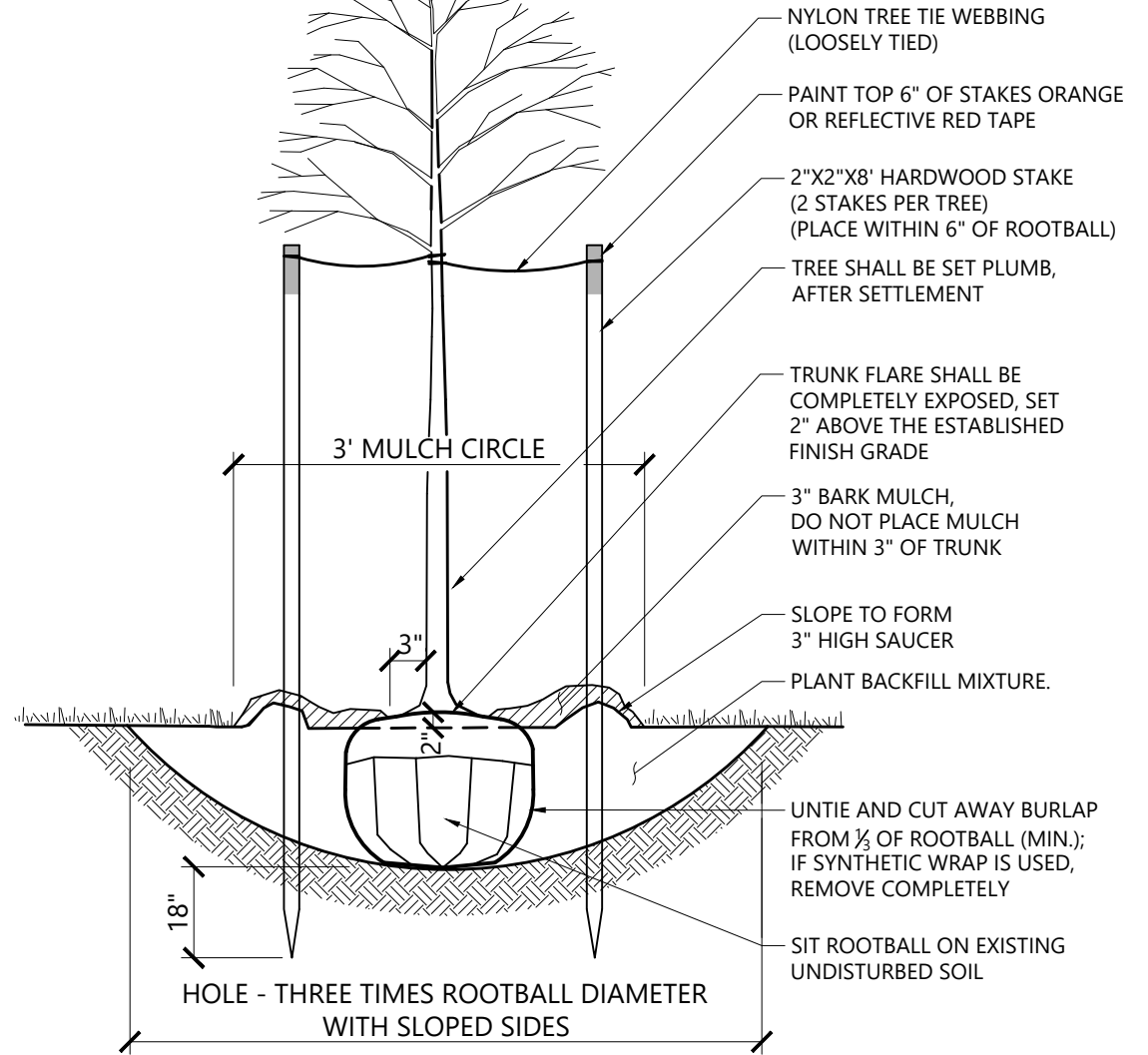
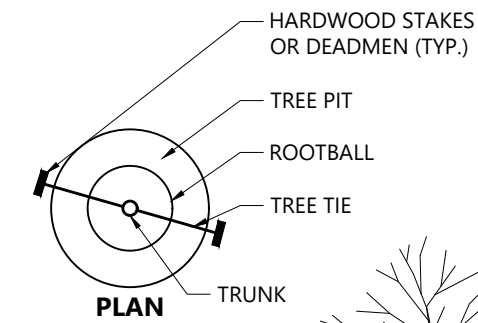
1/16

N.T.S.

Source: VHB

REV

LD\_600



### Tree Planting

9/21

N.T.S.

Source: VHB

REV

LD\_602

Received  
3/27/2025  
Coastal Resources Management Council

**E183-3 and F184N-4/5 115kV Transmission Lines  
Asset Condition Refurbishment Project**

Restoration Planting Details  
Warren, RI

Page 16 of 21

Date: 11/01/2024





Received  
3/27/2025  
Coastal Resources  
Management Council

|   |  |                               |  |            |            |            |            |      |          |
|---|--|-------------------------------|--|------------|------------|------------|------------|------|----------|
| <br><b>EG-303 Appendix 5</b><br><b>BMP Details</b>  | Revision: 04<br>Effective Date: 05/25/2022   |                               |  |            |            |            |            |      |          |
| <table border="1" style="width: 100%; border-collapse: collapse;"> <tr> <td style="width: 80%;"><b>Environmental Guidance</b></td> <td style="width: 20%; text-align: center;"> <table border="1" style="width: 100%; border-collapse: collapse;"> <tr> <td style="font-size: 0.7em;">Doc. No.</td> <td style="font-size: 0.7em;">EG-303</td> </tr> <tr> <td style="font-size: 0.7em;">Page: 7-19</td> <td style="font-size: 0.7em;">Rev. No. 4</td> </tr> <tr> <td style="font-size: 0.7em;">Date</td> <td style="font-size: 0.7em;">05/25/22</td> </tr> </table> </td> </tr> </table> |  | <b>Environmental Guidance</b> | <table border="1" style="width: 100%; border-collapse: collapse;"> <tr> <td style="font-size: 0.7em;">Doc. No.</td> <td style="font-size: 0.7em;">EG-303</td> </tr> <tr> <td style="font-size: 0.7em;">Page: 7-19</td> <td style="font-size: 0.7em;">Rev. No. 4</td> </tr> <tr> <td style="font-size: 0.7em;">Date</td> <td style="font-size: 0.7em;">05/25/22</td> </tr> </table> | Doc. No.   | EG-303     | Page: 7-19 | Rev. No. 4 | Date | 05/25/22 |
| <b>Environmental Guidance</b>   | <table border="1" style="width: 100%; border-collapse: collapse;"> <tr> <td style="font-size: 0.7em;">Doc. No.</td> <td style="font-size: 0.7em;">EG-303</td> </tr> <tr> <td style="font-size: 0.7em;">Page: 7-19</td> <td style="font-size: 0.7em;">Rev. No. 4</td> </tr> <tr> <td style="font-size: 0.7em;">Date</td> <td style="font-size: 0.7em;">05/25/22</td> </tr> </table> | Doc. No.                      | EG-303   | Page: 7-19 | Rev. No. 4 | Date       | 05/25/22   |      |          |
| Doc. No.  | EG-303   |                               |  |            |            |            |            |      |          |
| Page: 7-19  | Rev. No. 4   |                               |  |            |            |            |            |      |          |
| Date  | 05/25/22   |                               |  |            |            |            |            |      |          |
| Subject: Access, Maintenance and Construction Best Management Practices<br>Reference: EP No. 3 - Natural Resource Protection (Chapter 6)  |  |                               |  |            |            |            |            |      |          |
| <b>BMP DETAIL</b><br>SCALE: NONE  |  |                               |  |            |            |            |            |      |          |
|   |  |                               |  |            |            |            |            |      |          |
| <b>BMP PICTURE</b>  |  |                               |  |            |            |            |            |      |          |
|   |  |                               |  |            |            |            |            |      |          |
| APPROVED BY: VICE PRESIDENT, ENVIRONMENTAL SERVICES<br>PRINTED COPIES ARE NOT DOCUMENT CONTROLLED. PLEASE REFER TO THE ENVIRONMENTAL SHAREPOINT SITE FOR THE LATEST AUTHORIZED VERSION.   |  |                               |  |            |            |            |            |      |          |
| <b>CM-3</b><br><b>CONSTRUCTION MAT LAYOUT (WITH TRANSITION)</b><br><small>EG-303 Appendix 5 BMPs.dwg</small>  |  |                               |  |            |            |            |            |      |          |

**Detail #1**

|   |  |                               |  |            |            |            |            |      |          |
|---|--|-------------------------------|--|------------|------------|------------|------------|------|----------|
| <br><b>EG-303 Appendix 5</b><br><b>BMP Details</b>  | Revision: 04<br>Effective Date: 05/25/2022   |                               |  |            |            |            |            |      |          |
| <table border="1" style="width: 100%; border-collapse: collapse;"> <tr> <td style="width: 80%;"><b>Environmental Guidance</b></td> <td style="width: 20%; text-align: center;"> <table border="1" style="width: 100%; border-collapse: collapse;"> <tr> <td style="font-size: 0.7em;">Doc. No.</td> <td style="font-size: 0.7em;">EG-303</td> </tr> <tr> <td style="font-size: 0.7em;">Page: 7-20</td> <td style="font-size: 0.7em;">Rev. No. 4</td> </tr> <tr> <td style="font-size: 0.7em;">Date</td> <td style="font-size: 0.7em;">05/25/22</td> </tr> </table> </td> </tr> </table> |  | <b>Environmental Guidance</b> | <table border="1" style="width: 100%; border-collapse: collapse;"> <tr> <td style="font-size: 0.7em;">Doc. No.</td> <td style="font-size: 0.7em;">EG-303</td> </tr> <tr> <td style="font-size: 0.7em;">Page: 7-20</td> <td style="font-size: 0.7em;">Rev. No. 4</td> </tr> <tr> <td style="font-size: 0.7em;">Date</td> <td style="font-size: 0.7em;">05/25/22</td> </tr> </table> | Doc. No.   | EG-303     | Page: 7-20 | Rev. No. 4 | Date | 05/25/22 |
| <b>Environmental Guidance</b>   | <table border="1" style="width: 100%; border-collapse: collapse;"> <tr> <td style="font-size: 0.7em;">Doc. No.</td> <td style="font-size: 0.7em;">EG-303</td> </tr> <tr> <td style="font-size: 0.7em;">Page: 7-20</td> <td style="font-size: 0.7em;">Rev. No. 4</td> </tr> <tr> <td style="font-size: 0.7em;">Date</td> <td style="font-size: 0.7em;">05/25/22</td> </tr> </table> | Doc. No.                      | EG-303   | Page: 7-20 | Rev. No. 4 | Date       | 05/25/22   |      |          |
| Doc. No.  | EG-303   |                               |  |            |            |            |            |      |          |
| Page: 7-20  | Rev. No. 4   |                               |  |            |            |            |            |      |          |
| Date  | 05/25/22   |                               |  |            |            |            |            |      |          |
| Subject: Access, Maintenance and Construction Best Management Practices<br>Reference: EP No. 3 - Natural Resource Protection (Chapter 6)  |  |                               |  |            |            |            |            |      |          |
| <b>BMP DETAIL</b><br>SCALE: NONE  |  |                               |  |            |            |            |            |      |          |
|   |  |                               |  |            |            |            |            |      |          |
| <b>BMP PICTURE</b>  |  |                               |  |            |            |            |            |      |          |
|   |  |                               |  |            |            |            |            |      |          |
| APPROVED BY: VICE PRESIDENT, ENVIRONMENTAL SERVICES<br>PRINTED COPIES ARE NOT DOCUMENT CONTROLLED. PLEASE REFER TO THE ENVIRONMENTAL SHAREPOINT SITE FOR THE LATEST AUTHORIZED VERSION.   |  |                               |  |            |            |            |            |      |          |
| <b>CM-4</b><br><b>CONSTRUCTION MAT LAYOUT (WITH TRANSITION AND BMPs)</b><br><small>EG-303 Appendix 5 BMPs.dwg</small>   |  |                               |  |            |            |            |            |      |          |

**Detail #2**

|   |  |                               |  |            |            |            |            |      |          |
|---|--|-------------------------------|--|------------|------------|------------|------------|------|----------|
| <br><b>EG-303 Appendix 5</b><br><b>BMP Details</b>  | Revision: 04<br>Effective Date: 05/25/2022   |                               |  |            |            |            |            |      |          |
| <table border="1" style="width: 100%; border-collapse: collapse;"> <tr> <td style="width: 80%;"><b>Environmental Guidance</b></td> <td style="width: 20%; text-align: center;"> <table border="1" style="width: 100%; border-collapse: collapse;"> <tr> <td style="font-size: 0.7em;">Doc. No.</td> <td style="font-size: 0.7em;">EG-303</td> </tr> <tr> <td style="font-size: 0.7em;">Page: 7-30</td> <td style="font-size: 0.7em;">Rev. No. 4</td> </tr> <tr> <td style="font-size: 0.7em;">Date</td> <td style="font-size: 0.7em;">05/25/22</td> </tr> </table> </td> </tr> </table> |  | <b>Environmental Guidance</b> | <table border="1" style="width: 100%; border-collapse: collapse;"> <tr> <td style="font-size: 0.7em;">Doc. No.</td> <td style="font-size: 0.7em;">EG-303</td> </tr> <tr> <td style="font-size: 0.7em;">Page: 7-30</td> <td style="font-size: 0.7em;">Rev. No. 4</td> </tr> <tr> <td style="font-size: 0.7em;">Date</td> <td style="font-size: 0.7em;">05/25/22</td> </tr> </table> | Doc. No.   | EG-303     | Page: 7-30 | Rev. No. 4 | Date | 05/25/22 |
| <b>Environmental Guidance</b>   | <table border="1" style="width: 100%; border-collapse: collapse;"> <tr> <td style="font-size: 0.7em;">Doc. No.</td> <td style="font-size: 0.7em;">EG-303</td> </tr> <tr> <td style="font-size: 0.7em;">Page: 7-30</td> <td style="font-size: 0.7em;">Rev. No. 4</td> </tr> <tr> <td style="font-size: 0.7em;">Date</td> <td style="font-size: 0.7em;">05/25/22</td> </tr> </table> | Doc. No.                      | EG-303   | Page: 7-30 | Rev. No. 4 | Date       | 05/25/22   |      |          |
| Doc. No.  | EG-303   |                               |  |            |            |            |            |      |          |
| Page: 7-30  | Rev. No. 4   |                               |  |            |            |            |            |      |          |
| Date  | 05/25/22   |                               |  |            |            |            |            |      |          |
| Subject: Access, Maintenance and Construction Best Management Practices<br>Reference: EP No. 3 - Natural Resource Protection (Chapter 6)  |  |                               |  |            |            |            |            |      |          |
| <b>BMP PICTURE 1</b>  |  |                               |  |            |            |            |            |      |          |
|   |  |                               |  |            |            |            |            |      |          |
| <b>BMP PICTURE 2</b>  |  |                               |  |            |            |            |            |      |          |
|   |  |                               |  |            |            |            |            |      |          |
| APPROVED BY: VICE PRESIDENT, ENVIRONMENTAL SERVICES<br>PRINTED COPIES ARE NOT DOCUMENT CONTROLLED. PLEASE REFER TO THE ENVIRONMENTAL SHAREPOINT SITE FOR THE LATEST AUTHORIZED VERSION.   |  |                               |  |            |            |            |            |      |          |
| <b>CM-12</b><br><b>EXAMPLE OF CONSTRUCTION MAT ANCHORING (2 OF 2)</b><br><small>EG-303 Appendix 5 BMPs.dwg</small>  |  |                               |  |            |            |            |            |      |          |

**Detail #3**

**E183-3 and F184N-4/5 115kV Transmission Lines  
Asset Condition Refurbishment Project**

Details  
 Bristol and Warren, RI

1 Revised: 2/5/2025  
 Date: 11/15/2024





Received  
3/27/2025  
Coastal Resources  
Management Council

|   |   |
|---|---|
| <b>EG-303 Appendix 5<br/>BMP Details</b>  | Revision: 04<br>Effective Date: 05/25/2022                    |
| <b>Environmental Guidance</b>   |   |
| Subject: Access, Maintenance and Construction Best Management Practices   | Reference: EP No. 3 - Natural Resource Protection (Chapter 6) |
| <b>BMP DETAIL 1</b><br>SCALE: NONE  |   |
|   |   |
| NOTES:<br>1. EXAMPLES OF ANCHORING ONLY. MATTING CONTRACTOR SHALL PROPOSE THE METHOD. IF ANCHORING BASED ON FIELD CONDITIONS.<br>2. ANCHORING METHOD TO BE APPROVED BY THE ENVIRONMENTAL SERVICES SCIENTIST AND TRANSMISSION LINE CONSTRUCTION SUPERVISOR.  |   |
| <b>BMP DETAIL 2</b>   |   |
| NOTES:<br>1. TYPICAL HELICAL ANCHOR AND CABLE CONFIGURATION FOR MAT CONTAINMENT IN FLOODPLAINS/LAND SUBJECT TO FLOODING.<br>2. TYPICAL POINTS OF ATTACHMENT HEAVY STAPLES, EYE BOLTS OR OTHER SUITABLE HARDWARE TO SECURE ATTACHMENT OF MAT TO LINEAR CABLE. IF CHAIN POCKETS ARE PRESENT IN THE MATS, CABLE OR ROPE CAN BE LOOPED THROUGH ROADS. |   |
|   |   |
| APPROVED BY VICE PRESIDENT, ENVIRONMENTAL SERVICES<br>PRINTED COPIES ARE NOT DOCUMENT CONTROLLED. PLEASE REFER TO THE ENVIRONMENTAL SHAREPOINT SITE FOR THE LATEST AUTHORIZED VERSION.  |   |
| <b>CM-12<br/>EXAMPLE OF CONSTRUCTION<br/>MAT ANCHORING (1 OF 2)</b>   |   |

**Detail #4**

|  |   |
|--|---|
| <b>EG-303 Appendix 5<br/>BMP Details</b>   | Revision: 04<br>Effective Date: 05/25/2022                    |
| <b>Environmental Guidance</b>  |   |
| Subject: Access, Maintenance and Construction Best Management Practices  | Reference: EP No. 3 - Natural Resource Protection (Chapter 6) |
| <b>BMP DETAIL</b><br>SCALE: NONE   |   |
|  |   |
| NOTES:<br>1. IF MATS ARE INSTALLED IN A WETLAND AREA, INSTALL EROSION CONTROLS TO CONTAIN MATERIAL UTILIZED IN THE MAT TRANSITIONS.  |   |
| <b>BMP PICTURE</b>   |   |
|  |   |
| APPROVED BY VICE PRESIDENT, ENVIRONMENTAL SERVICES<br>PRINTED COPIES ARE NOT DOCUMENT CONTROLLED. PLEASE REFER TO THE ENVIRONMENTAL SHAREPOINT SITE FOR THE LATEST AUTHORIZED VERSION. |   |
| <b>CM-2<br/>CONSTRUCTION MAT BRIDGE<br/>(1 OF 2)</b>   |   |

**Detail #5**

|  |   |
|--|---|
| <b>EG-303 Appendix 5<br/>BMP Details</b>   | Revision: 04<br>Effective Date: 05/25/2022                    |
| <b>Environmental Guidance</b>  |   |
| Subject: Access, Maintenance and Construction Best Management Practices  | Reference: EP No. 3 - Natural Resource Protection (Chapter 6) |
| <b>BMP PICTURE - SINGLE SPAN</b><br>SCALE: NONE  |   |
|  |   |
| NOTES:<br>1. WHERE STREAM WIDTH ALLOWS, INSTALL CONSTRUCTION MATS TO SPAN THE WATERCOURSE IN ITS ENTIRETY WITHOUT STRINGER PLACEMENT IN THE WATER OR ANY RESTRICTION OF STREAM FLOW.<br>2. INSTALLATION OF THE CONSTRUCTION MAT BRIDGE SHALL NOT DAMAGE THE STREAM BED AND BANKS. WHERE POSSIBLE, FOOTERS SHALL BE PLACED PARALLEL TO THE TOP OF THE STREAM BANKS, WITH ACCESS MATTING PLACED ACROSS THE TOP OF THE STRINGERS DISTRIBUTING THE WEIGHT OF THE CONSTRUCTION EQUIPMENT.<br>3. AT STREAM CROSSINGS THAT CANNOT BE SPANNED BY A SINGLE SECTION OF CONSTRUCTION MATTING, AND WHERE PERMITS ALLOW, STRINGERS SHALL BE PLACED ATOP THE STREAM BED PARALLEL TO THE FLOW OF WATER. |   |
| APPROVED BY VICE PRESIDENT, ENVIRONMENTAL SERVICES<br>PRINTED COPIES ARE NOT DOCUMENT CONTROLLED. PLEASE REFER TO THE ENVIRONMENTAL SHAREPOINT SITE FOR THE LATEST AUTHORIZED VERSION.   |   |
| <b>CM-2<br/>CONSTRUCTION MAT BRIDGE<br/>(2 OF 2)</b>   |   |

**Detail #6**

**E183-3 and F184N-4/5 115kV Transmission Lines  
Asset Condition Refurbishment Project**

Details  
Bristol and Warren, RI

Page 18 of 21

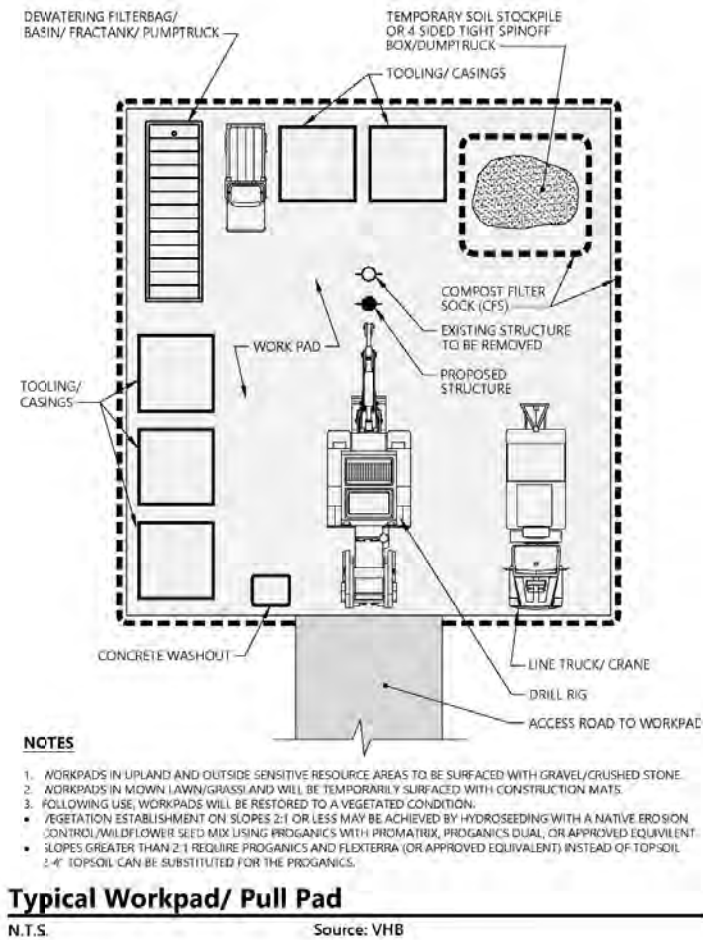
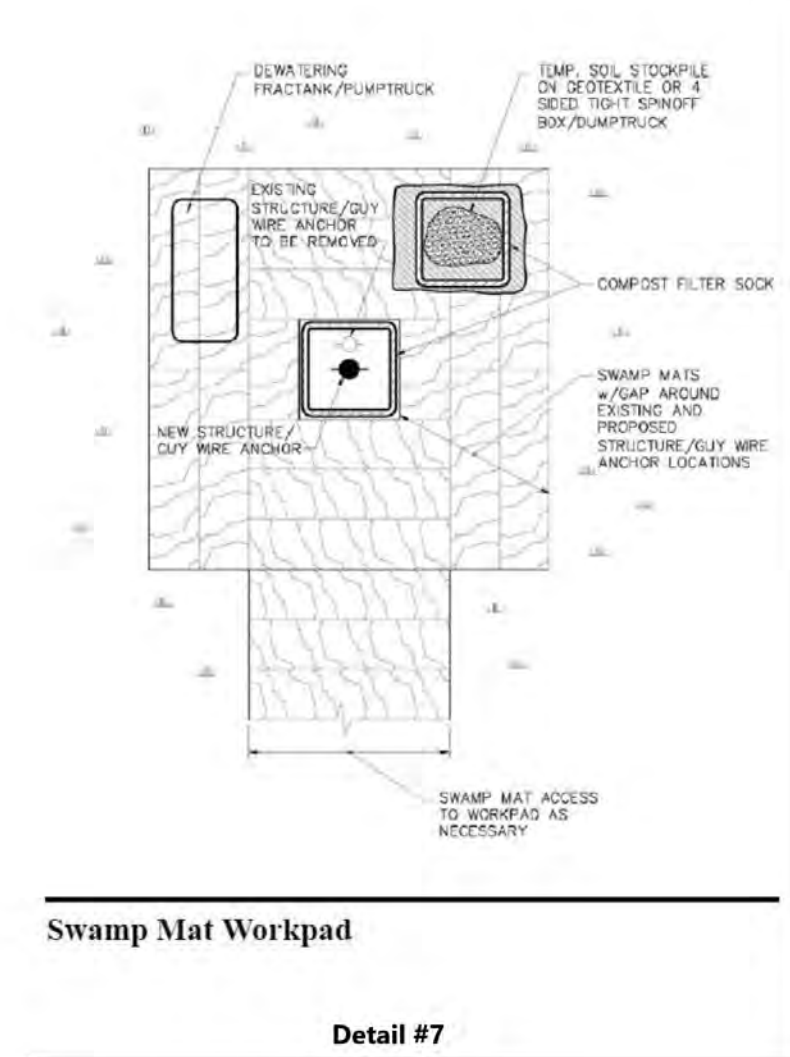
Revised: 2/5/2025  
Date: 11/15/2024

Source: RIGIS, National Grid, VHB





Received  
3/27/2025  
Coastal Resources  
Management Council



Revision: 04  
Effective Date: 05/25/2022

**EG-303 Appendix 5  
BMP Details**

|                               |                 |            |
|-------------------------------|-----------------|------------|
| <b>Environmental Guidance</b> | Doc. No. EG-303 | Page: 7-4  |
|                               | Date: 05/25/22  | Rev. No. 4 |

Subject: Access, Maintenance and Construction Best Management Practices

Reference: EP No. 3 - Natural Resource Protection (Chapter 6)

**BMP DETAIL**

**SECTION**

**PLAN**

**NOTES:**

1. FILTER SOCK TO BE PLACED OUTSIDE OR APPROVED EQUAL BY THE ENVIRONMENTAL DEPARTMENT.
2. ALL MATERIAL TO BE USED TO BE APPROVED.
3. FILTER SOCKS ARE TO BE PLACED IN ACCORDANCE WITH THE FOLLOWING REQUIREMENTS:
  - FILTER SOCKS SHALL BE PLACED IN ACCORDANCE WITH THE FOLLOWING REQUIREMENTS.
  - FILTER SOCKS SHALL BE PLACED IN ACCORDANCE WITH THE FOLLOWING REQUIREMENTS.
  - FILTER SOCKS SHALL BE PLACED IN ACCORDANCE WITH THE FOLLOWING REQUIREMENTS.
4. FILTER SOCKS SHALL BE PLACED IN ACCORDANCE WITH THE FOLLOWING REQUIREMENTS.

**BMP PICTURE**

**SEC:4  
SILT SOXX \***

\*PICTURE AND DETAIL PROVIDED BY FILTRESS LAND IMPROVEMENT SYSTEMS APPROVED BY VICE PRESIDENT, ENVIRONMENTAL SERVICES. PRINTED COPIES ARE NOT DOCUMENT CONTROLLED. PLEASE REFER TO THE ENVIRONMENTAL SHARING SITE FOR THE LATEST AUTHORIZED VERSION.

© 2022 The Narragansett Electric Company. All rights reserved. 4 of 59

**E183-3 and F184N-4/5 115kV Transmission Lines  
Asset Condition Refurbishment Project**

Details  
Bristol and Warren, RI

1 Revised: 2/5/2025  
 Date: 11/15/2024





**Received**  
3/27/2025  
**Coastal Resources  
 Management Council**

|  |  |
|--|--|
| <br><b>EG-303 Appendix 5<br/>                 BMP Details</b>  | Revision: 04<br>Effective Date: 05/25/2022 |
| <b>Environmental Guidance</b><br>Doc. No. EG-303<br>Page: 7-42 Rev. No. 4<br>Date: 05/25/22  |  |
| Subject: Access, Maintenance and Construction Best Management Practices<br>Reference: EP No. 3 - Natural Resource Protection (Chapter 6)   |  |
| <b>BMP DETAIL</b><br>SCALE: NONE   |  |
|  |  |
| <p><b>NOTE:</b> ONCE PUMPING COMMENCES, THE DIRT BAG SHALL BE MONITORED FREQUENTLY TO ASSURE THAT THE CONNECTIONS ARE SECURELY FASTENED AND THE RATE OF WATER DELIVERY TO THE STRUCTURE IS LOW ENOUGH TO PREVENT UNFILTERED WATER FROM FLOWING FROM THE HOSE CONNECTIONS OR BAG.</p> |  |
| <b>BMP PICTURE</b><br>   |  |
| <p>* PICTURE AND DETAIL PROVIDED BY ACF ENVIRONMENTAL APPROVED BY: VICE PRESIDENT, ENVIRONMENTAL SERVICES<br/>                 PRINTED COPIES ARE NOT DOCUMENT CONTROLLED. PLEASE REFER TO THE ENVIRONMENTAL SHAREPOINT SITE FOR THE LATEST AUTHORIZED VERSION.</p>                  |  |
| <b>AA-12<br/>                 DIRT BAG*</b><br><small>File: DIRT BAG.dwg</small>   |  |

© 2022 The Narragansett Electric Company. All rights reserved. 42 of 59

**Detail #10**

|  |  |
|--|--|
| <br><b>EG-303 Appendix 5<br/>                 BMP Details</b>  | Revision: 04<br>Effective Date: 05/25/2022 |
| <b>Environmental Guidance</b><br>Doc. No. EG-303<br>Page: 7-40 Rev. No. 4<br>Date: 05/25/22  |  |
| Subject: Access, Maintenance and Construction Best Management Practices<br>Reference: EP No. 3 - Natural Resource Protection (Chapter 6)   |  |
| <b>BMP DETAIL</b><br>SCALE: NONE<br>FIELD: VARIABLE  |  |
|  |  |
| <p><b>NOTE:</b></p> <ol style="list-style-type: none"> <li>1. NUMBER OF BALES MAY VARY DEPENDING ON SITE CONDITIONS.</li> <li>2. THE BASIN TO BE SIZED TO PREVENT DISCHARGE WATER FROM OVERTOPPING BASIN.</li> <li>3. KEEP AS FAR FROM METALS AS PRACTICAL.</li> <li>4. CLEAN AND REMOVE AS SOON AS DEWATERING IS COMPLETE.</li> </ol> |  |
| <b>BMP PICTURE</b><br>   |  |
| <p>APPROVED BY: VICE PRESIDENT, ENVIRONMENTAL SERVICES<br/>                 PRINTED COPIES ARE NOT DOCUMENT CONTROLLED. PLEASE REFER TO THE ENVIRONMENTAL SHAREPOINT SITE FOR THE LATEST AUTHORIZED VERSION.</p>   |  |
| <b>AA-10<br/>                 DEWATERING BASIN<br/>                 (SMALL SCALE)</b><br><small>File: Small Scale Dewatering.dwg</small>   |  |

© 2022 The Narragansett Electric Company. All rights reserved. 40 of 59

**Detail #11**

|  |  |
|--|--|
| <br><b>EG-303 Appendix 5<br/>                 BMP Details</b>  | Revision: 04<br>Effective Date: 05/25/2022 |
| <b>Environmental Guidance</b><br>Doc. No. EG-303<br>Page: 7-44 Rev. No. 4<br>Date: 05/25/22  |  |
| Subject: Access, Maintenance and Construction Best Management Practices<br>Reference: EP No. 3 - Natural Resource Protection (Chapter 6)   |  |
| <b>BMP DETAIL</b><br>SCALE: NONE<br>FIELD: 6' / 8'   |  |
|  |  |
| <p><b>NOTE:</b></p> <ol style="list-style-type: none"> <li>1. PRODUCT TO BE OUTPAK PVC CONCRETE WASHOUT OR APPROVED EQUAL BY MANUFACTURER'S PERMISSION.</li> <li>2. THE CONCRETE WASHOUT AREA SHALL BE INSTALLED PRIOR TO ANY CONCRETE PLACEMENT.</li> <li>3. SIGNS SHALL BE PLACED AS NECESSARY TO CLEARLY INDICATE THE LOCATION OF THE CONCRETE WASHOUT.</li> <li>4. THE CONCRETE WASHOUT AREA WILL BE REPLACED AS NECESSARY TO MAINTAIN CAPACITY FOR WASTE CONCRETE AND OTHER LOSS WASTE.</li> <li>5. WASHOUT RESIDUE SHALL BE REMOVED FROM THE SITE AND DISPOSED OF AT AN APPROVED WASTE SITE.</li> <li>6. DO NOT MIX EXCESS AMOUNTS OF FRESH CONCRETE OR CEMENT ON-SITE.</li> <li>7. DO NOT WASH OUT CONCRETE INTO STORM DRAINS, OPEN DITCHES, STREETS, OR STREAMS.</li> <li>8. AVOID DUMPING EXCESS CONCRETE IN NON-DESIGNATED DUMPING AREAS.</li> <li>9. LOCATE WASHOUT AREA AT LEAST 50' FROM STORM DRAINS, OPEN DITCHES, OR WATERBODIES. COORDINATE LOCATION WITH NATIONAL GRID ENVIRONMENTAL SCIENTIST.</li> <li>10. WASH OUT WASTES INTO THE OUTPAK WASHOUT WHERE THE CONCRETE CAN SET, BE BROKEN UP, AND THEN DISPOSED OF PROPERLY.</li> <li>11. A SECURE, NON-COLLAPSING, NON-WATER COLLECTING COVER MUST BE PLACED OVER CONCRETE WASHOUT PRIOR TO PREDICTED WET WEATHER TO PREVENT ACCUMULATION AND OVERTFLOW OF PRECIPITATION.</li> </ol> |  |
| <b>BMP PICTURE</b><br>   |  |
| <p>* PICTURE AND DETAIL PROVIDED BY OUTPAK WASHOUT APPROVED BY: VICE PRESIDENT, ENVIRONMENTAL SERVICES<br/>                 PRINTED COPIES ARE NOT DOCUMENT CONTROLLED. PLEASE REFER TO THE ENVIRONMENTAL SHAREPOINT SITE FOR THE LATEST AUTHORIZED VERSION.</p>   |  |
| <b>AA-14<br/>                 OUTPAK CONCRETE WASHOUT *</b><br><small>File: Outpak Washout.dwg</small>   |  |

© 2022 The Narragansett Electric Company. All rights reserved. 44 of 59

**Detail #12**

**E183-3 and F184N-4/5 115kV Transmission Lines  
 Asset Condition Refurbishment Project**

Details  
 Bristol and Warren, RI

Revised: 2/5/2025  
 Date: 11/15/2024





**Received**  
3/27/2025  
**Coastal Resources Management Council**

|  |   |
|--|---|
| <b>EG-303 Appendix 5<br/>BMP Details</b>   | Revision: 04<br>Effective Date: 05/25/2022  |
| <b>Environmental Guidance</b>  | Doc. No. EG-303<br>Page: 7-24 Rev. No. 4<br>Date: 05/25/22  |
| Subject: Access, Maintenance and Construction Best Management Practices  | Reference: EP No. 3 - Natural Resource Protection (Chapter 6)                                       |
| <b>BMP DETAIL</b><br>SCALE: NONE   |   |
|  |   |
| <b>NOTES:</b><br>1. STONE SIZE - USE 2" STONE (MINIMUM) TO 6" STONE (MAXIMUM)<br>2. LENGTH - GREATER THAN OR EQUAL TO 50 FEET<br>3. THICKNESS - 4"<br>4. WIDTH - FIFTEEN (15) FOOT TYP., BUT NOT LESS THAN FULL WIDTH AT POINTS WHERE INGRESS OR EGRESS OCCURS.<br>5. SURFACE WATER - ALL SURFACE WATER FLOWING OR DIVERTED TOWARD CONSTRUCTION ENTRANCES SHALL BE PIPED ACROSS ENTRANCE. IF PIPING IS IMPRACTICAL, MOUNTABLE BORN SHALL BE PERMITTED.<br>6. MAINTENANCE - THE ENTRANCE SHALL BE MAINTAINED IN A CONDITION WHICH SHALL PREVENT TRACKING OR FLOWING OF SEDIMENT ON TO PUBLIC RIGHTS-OF-WAY. THIS MAY REQUIRE PERIODIC TOP DRESSING WITH ADDITIONAL STONE AS CONDITIONS DEMAND AND REPAIR OR CLEANOUT OF ANY MEASURES USED TO TRAP SEDIMENT. ALL SEDIMENT SPILLED, DROPPED, WASHED OR TRACKED ONTO PUBLIC RIGHTS-OF-WAY MUST BE REMOVED IMMEDIATELY.<br>7. PERIODIC INSPECTION AND NEEDED MAINTENANCE SHALL BE PROVIDED.<br>8. THE CLEAN STONE SHOULD BE INSTALLED OVER A GEOTEXTILE FABRIC. GEOTEXTILE FABRIC MAY BE OMITTED FOR PERMANENT CONSTRUCTION ENTRANCES/EXITS ON A CASE-BY-CASE BASIS WITH THE APPROVAL OF THE ENVIRONMENTAL DEPARTMENT SCIENTIST.<br>9. FOLLOWING CONSTRUCTION, THE CONSTRUCTION ENTRANCE/EXIT SHALL BE REMOVED AND THE AREA GRADED, SEEDS, AND MULCHED AS NEEDED. ENTRANCE/EXITS MAY REMAIN DEPENDING UPON FUTURE ACCESS NEEDS AND/OR PROJECT-SPECIFIC APPROVALS BUT REQUIRES APPROVALS FROM THE ENVIRONMENTAL DEPARTMENT SCIENTIST AND PROPERTY LEGAL. |   |
| <b>BMP PICTURE</b><br>SCALE: NONE  |   |
|  |   |
| APPROVED BY VICE PRESIDENT, ENVIRONMENTAL SERVICES<br>PRINTED COPIES ARE NOT DOCUMENT CONTROLLED. PLEASE REFER TO THE ENVIRONMENTAL SHAREPOINT SITE FOR THE LATEST AUTHORIZED VERSION  | CM-8<br>TEMPORARY CONSTRUCTION<br>ENTRANCE/ EXIT<br><small>18in Temp Construction Entr.docx</small> |

**Detail #13**

|  |   |
|--|---|
| <b>Environmental Guidance</b>  | Doc. No. EG-303<br>Page: x-xx<br>Date: 09/28/22               |
| Subject: Access, Management and Construction Best Management Practices   | Reference: EP No. 3 - Natural Resource Protection (Chapter 6) |
| <b>BMP DETAIL</b><br>SCALE: NONE   |   |
|  |   |
| <b>NOTES:</b><br>1. PRODUCT TO BE GUTTER BUDDY OR APPROVED EQUAL BY RHODE ISLAND ENERGY ENVIRONMENTAL SCIENTIST.                                   |   |
| <b>BMP PICTURE</b><br>SCALE: NONE  |   |
|  |   |
| DETAIL AND IMAGES PROVIDED BY ACF ENVIRONMENTAL<br><small>https://acfenvironmental.com/products/inlet-protection/curb-inlets/gutter-buddy/</small> | AA-20B<br>CURB INLET GUTTER BUDDY                             |

**Detail #14**

|   |   |
|---|---|
| <b>Environmental Guidance</b>   | Doc. No. EG-303<br>Page: 7-50<br>Date: 09/28/22               |
| Subject: Access, Management and Construction Best Management Practices  | Reference: EP No. 3 - Natural Resource Protection (Chapter 6) |
| <b>BMP DETAIL</b><br>SCALE: NONE  |   |
|   |   |
| <b>NOTES:</b><br>1. PRODUCT TO BE SILT SACK OR APPROVED EQUAL BY RHODE ISLAND ENERGY ENVIRONMENTAL SCIENTIST.<br>2. THE USE OF A SILT SACK OPTIONAL OVERFLOW AND OVERFLOW DIMENSIONS ARE TO BE COORDINATED WITH THE ENVIRONMENTAL DEPARTMENT. |   |
| <b>BMP PICTURES</b><br>SCALE: NONE  |   |
|   |   |
| DETAIL AND IMAGES PROVIDED BY ACF ENVIRONMENTAL<br><small>https://acfenvironmental.com/products/inlet-protection/drop-inlets/silt-sack/</small>   | AA-20A<br>DROP INLET SILT SACK                                |

**Detail #15**

**E183-3 and F184N-4/5 115kV Transmission Lines  
Asset Condition Refurbishment Project**

Details  
Bristol and Warren, RI

Page 21 of 21

Revised: 2/5/2025  
 Date: 11/15/2024

Source: RIGIS, National Grid, VHB

