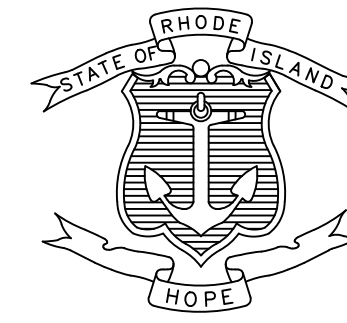


INDEX

SHEET NO.	DESCRIPTION
1	COVER SHEET AND INDEX
2	BRIDGE GENERAL NOTES
3	STANDARD PLAN SYMBOLS AND STANDARD LEGENDS
4	GENERAL BRIDGE PLAN
5	GENERAL BRIDGE ELEVATION
6	PIER 1 REPAIR DETAILS
7	PIER 2 REPAIR DETAILS
8	PIER 3 REPAIR DETAILS
9	PIER 4 REPAIR DETAILS
10	PIER 5 REPAIR DETAILS
11	PIER 6 REPAIR DETAILS

STATE OF RHODE ISLAND



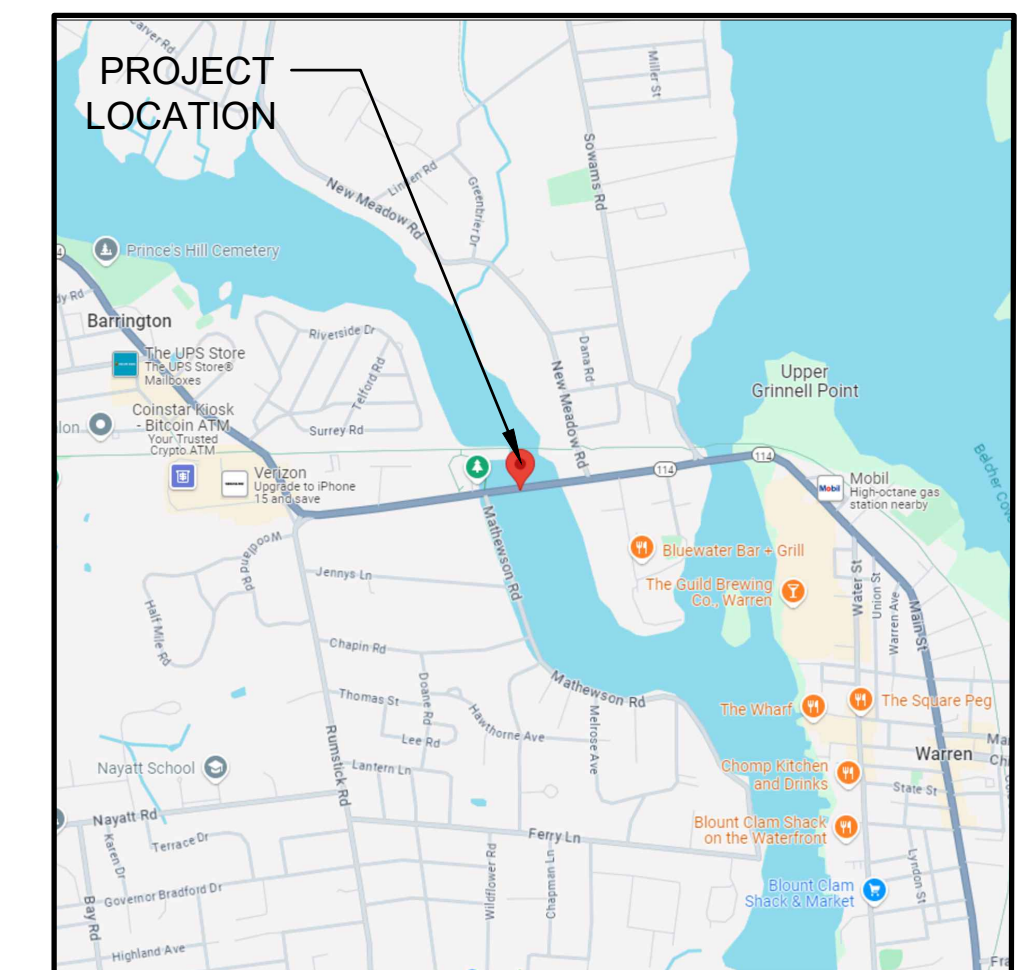
DEPARTMENT OF TRANSPORTATION

PLAN, PROFILE AND SECTIONS OF PROPOSED REHABILITATION OF

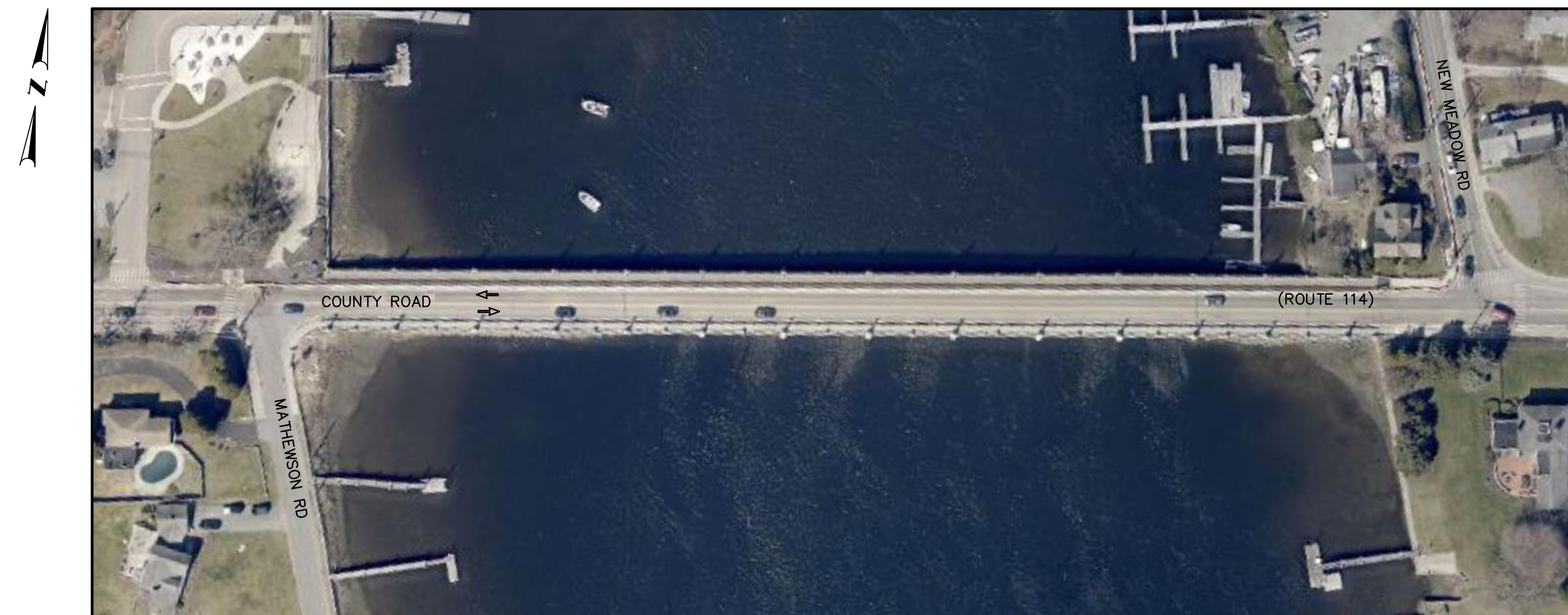
BRIDGE GROUP 15F - BARRINGTON BRIDGE NO. 123

TOWN OF BARRINGTON
COUNTY OF BRISTOL

R.I. CONTRACT NO. 2023-EB-021B F.A. PROJECT NO. BHO-015(001)



LOCATION MAP
NOT TO SCALE



GENERAL LOCATION
NOT TO SCALE

PERMIT REVIEW SUBMISSION
02/04/25

R.I. STANDARD SPECIFICATIONS AND STANDARD DETAILS

SPECIFICATIONS TO GOVERN THIS PROJECT ARE THE R.I. STANDARD SPECIFICATIONS FOR ROAD AND BRIDGE CONSTRUCTION, AUGUST 2024, WITH ALL REVISIONS AND THE STATE AND FEDERAL SPECIAL PROVISIONS INCLUDED IN THE CONTRACT DOCUMENTS.

STANDARD DETAILS FOR THIS PROJECT ARE R.I. STANDARD DETAILS, 1998 EDITION, WITH ALL REVISIONS.

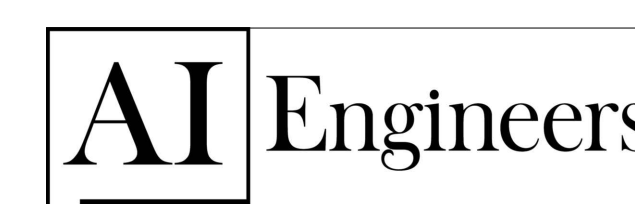


R.I. DEPARTMENT OF TRANSPORTATION	
APPROVED	
DIRECTOR, DIVISION OF PROJECT MANAGEMENT	DATE
APPROVED	
CHIEF ENGINEER OF INFRASTRUCTURE	DATE
APPROVED	
DIRECTOR	DATE
DEPARTMENT OF TRANSPORTATION FEDERAL HIGHWAY ADMINISTRATION	
APPROVED	
DIVISION ADMINISTRATOR	DATE

Contract Number _____
Number of Sheet 1
Total Sheets 11



BASE OF LEVELS
NAVD 1988
RI STATE PLANE 1983 US FOOT



GENERAL NOTES

- ALL CONSTRUCTION INDICATED ON THESE PLANS SHALL BE IN ACCORDANCE WITH:
 - THE AUGUST 2024 ADDITION OF AND SUPPLEMENTS TO THE RHODE ISLAND DEPARTMENT OF TRANSPORTATION STANDARD SPECIFICATIONS FOR ROAD AND BRIDGE CONSTRUCTION (RI STANDARD SPECIFICATIONS).
 - THE AMERICAN ASSOCIATION OF STATE HIGHWAY AND TRANSPORTATION OFFICIALS (AASHTO) LRFD BRIDGE CONSTRUCTION SPECIFICATIONS, FOURTH EDITION, INCLUDING THE LATEST INTERIM REVISIONS.
- DIMENSIONS, STATIONS ELEVATIONS AND ANGLES OF THE EXISTING STRUCTURE HAVE BEEN OBTAINED FROM PLANS OF THE ORIGINAL CONSTRUCTION AND LIMITED FIELD MEASUREMENTS. THE CONTRACTOR SHALL VERIFY ALL DIMENSIONS REQUIRED FOR PROPER PERFORMANCE OF THE WORK. FIELD CONDITIONS MAY EXIST WHICH DEVIATE FROM THE DIMENSIONS SHOWN ON THESE PLANS. THE CONTRACTOR SHALL BE SOLELY RESPONSIBLE FOR FABRICATION AND FIT OF HIS HIS WORK.
- THE BASE OF LEVELS, TO WHICH THE PLAN ELEVATIONS ARE REFERENCED, ARE BASED ON THE ORIGINAL (2003) RECORD DRAWINGS. NORTH ARROWS ARE NAD83 GRID NORTH.
- A HYDROGRAPHIC AND EXISTING CONDITIONS SURVEY WAS PREPARED AS PART OF THIS SCOPING ASSIGNMENT (SEE "HYDROGRAPHIC BARRINGTON RIVER EXISTING CONDITIONS" SURVEY PLAN, PREPARED FOR THE RIDOT BY DAVID P. PRINCE, PLS, SCALE: 1" = 40', 2/14/2024). THE PURPOSE OF THIS SURVEY IS TO SUPPORT THE HYDRAULIC ANALYSIS. IT WAS NOT USED TO PREPARE THIS DRAWINGS.
- ANY DAMAGE TO EXISTING STATE OR PRIVATE PROPERTY CAUSED BY THE CONTRACTOR'S OPERATIONS SHALL BE REPAIRED BY THE CONTRACTOR AT NO ADDITIONAL COST TO THE STATE.
- THE CONTRACTOR SHALL PLACE ALL EQUIPMENT AND MATERIALS AS FAR AWAY AS POSSIBLE FROM THE EDGE OF THE TRAVEL LANE SO AS NOT CAUSE A SAFETY HAZARD, IN ACCORDANCE WITH SECTION 106.06 OF THE R.I.D.O.T. STANDARD SPECIFICATIONS, LATEST EDITION.
- THE CONTRACTOR SHALL BE RESPONSIBLE FOR MAINTAINING ALL ROADWAY FREE OF DEBRIS RESULTING FROM THEIR CONSTRUCTION OPERATIONS. ALL DEBRIS SHALL BE REMOVED TO THE SATISFACTION OF THE ENGINEER AT NO ADDITIONAL COST TO THE STATE.
- THE CONTRACTOR SHALL TAKE THE PROPER PRECAUTION TO ENSURE THE STABILITY OF ALL STRUCTURAL ELEMENTS DURING CONSTRUCTION UNTIL ALL REPAIRS ARE COMPLETE.

DESIGN DATA

- DESIGN SPECIFICATIONS
 - THE AASHTO LRFD BRIDGE DESIGN SPECIFICATIONS, NINTH EDITION, 2020, INCLUDING ALL INTERIM REVISIONS TO DATE.
 - THE RHODE ISLAND LRFD BRIDGE MANUAL, 2007 EDITION INCLUDING ALL REVISIONS TO DATE.
 - ALL OTHER APPLICABLE DESIGN SPECIFICATIONS ARE REFERENCED IN SECTION 1 OF THE RHODE ISLAND LRFD BRIDGE DESIGN MANUAL DATED 2007.
 - THE LATEST REVISION OF AND SUPPLEMENTS TO THE RHODE ISLAND DEPARTMENT OF TRANSPORTATION STANDARDS SPECIFICATIONS FOR ROAD AND BRIDGE CONSTRUCTION (RI STANDARD SPECIFICATIONS).
 - IN CASE OF CONFLICT, THE RHODE ISLAND LRFD BRIDGE MANUAL SHALL GOVERN.

JOB SPECIFIC GENERAL NOTES:

- ALL WORK SHALL BE PREFERRED IN ACCORDANCE WITH ENVIRONMENTAL APPROVALS (WHEN ISSUED) FROM THE RI DEPARTMENT OF ENVIRONMENTAL MANAGEMENT (RIDEM), THE US ARMY CORPS OF ENGINEERS (ACOE), AND THE COASTAL RESOURCES MANAGEMENT COUNCIL (CRMC). THESE PERMITS SHALL BE INCLUDED AS PART OF THE CONTRACTOR DOCUMENTS. IN-WATER WORK SHALL COMPLY WITH THE PERMITS.
- THE CONTRACTOR IS NOTIFIED OF THE ENVIRONMENTAL SENSITIVITY OF THE BARRINGTON RIVER.
- THE CONTRACTOR IS RESPONSIBLE FOR PROVIDING AND MAINTAINING ENVIRONMENTAL CONTROLS AS REQUIRED BY FEDERAL, STATE AND LOCAL REGULATIONS AND PERMITS. ANY MATERIAL THAT FALLS INTO THE WATER AS A RESULT OF THE CONTRACTOR'S OPERATIONS SHALL BE REMOVED IMMEDIATELY.
- THE CONTRACTOR IS RESPONSIBLE FOR PROTECTING THE WATERWAY AGAINST SPILLS AND EVAPORATION WHILE REFUELING, LUBRICATING, OR STRONG EQUIPMENT. ALL FUEL, OIL, AND LUBRICANTS SHALL BE HANDLED IN ACCORDANCE WITH ALL FEDERAL, STATE, AND LOCAL REGULATIONS.
- THE CONTRACTOR SHALL COORDINATE ALL MOVEMENT AND STAGING OF BARGES WITH THE UNITED STATE COAST GUARD (USCG), RIDOT, AND THE TOWN OF BARRINGTON HARBOMASTER.

EXISTING CONDITIONS:

- EXISTING CONDITIONS PROVIDED IN THESE DRAWINGS IS BASED ON THE ORIGINAL RECORD PLANS, THE 2019, REPAIR PLANS, THE 2021 UNDERWATER INSPECTION REPORT, AND A LIMITED UNDERWATER VISUAL INSPECTION PERFORMED IN 2024.
- THE CONTRACTOR IS NOTIFIED OF THE STRONG CURRENTS, TIDAL VARIATION AND LIMITED VISIBILITY UNDERWATER.
- SOME EXPOSED PORTIONS OF TREMIE A MAY HAVE BROKEN OFF AND THE REMAINING SHAPE IS IRREGULAR AND SUSCEPTIBLE TO BEING DAMAGED DURING THE WORK.
- TREMIE A AT PIER 5 AND 6 IS ENTIRELY COVERED BY GROUT BAGS FROM THE TOP SURFACE TO THE CHANNEL BOTTOM.
- SPAN 4 (BETWEEN PIERS 3 AND 4) IS MARKED WITH USCG NAVIGATIONAL AIDS. THE CONTRACTOR IS RESPONSIBLE FOR COORDINATING WITH THE BARRINGTON HARBOMASTER FOR TEMPORARY DELINEATION OF THE NAVIGABLE WATERWAY.
- POLICE COVE PARK SHALL NOT BE USED FOR STAGING OPERATIONS.
- THE CONTRACTOR IS NOTIFIED THAT THE BARRINGTON RIVER SOUTH OF THE BRIDGE IS HEAVILY OCCUPIED BY MOORED VESSELS DURING THE PEAK SEASON. THE CONTRACTOR IS RESPONSIBLE FOR COORDINATING WITH THE THE BARRINGTON HARBOMASTER TO ENSURE BARGES, EQUIPMENT, ETC. CAN BE TRANSPORTED TO THE SITE WITHOUT NEED TO RELOCATE MOORINGS.

MATERIALS:

TREMIE CONCRETE:

- CONSULATNAT SHALL SPECIFY CONCRETE MIX FOR TREMIE POUR. CONCRETE MIX DESIGN SHALL CONSIDER SET TIMES DEPENDENT ON STRONG CURRENTS, CORROSION RESISTANCE AND EXPOSURE TO SALT WATER.

CONCRETE STRENGTHS:

- RAPID SETTING MORTAR f'c = 5000 PSI (28 DAYS)
PATCHING MORTAR FOR SUBSTRUCTURE CONCRETE REPAIRS

SHEET PILES:

- STEEL SHEET PILES SHALL BE HOT ROLLED AND SPECIFICALLY DESIGNED FOR RESISTANCE TO CORROSION AND SALT WATER.

FABRIC FORMS OF GROUT:

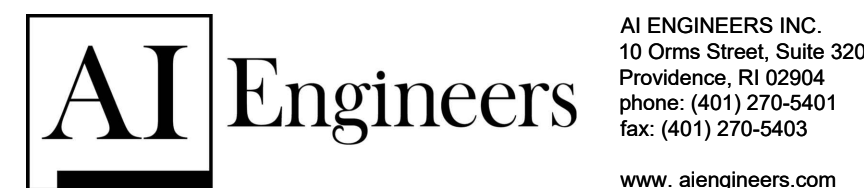
- FABRIC FORMS SHALL BE SPECIFIED BY THE CONSULTANT AND BE SUITABLE FOR UNDERWATER INSTALLATIONS IN AN AGGRESSIVE MARINE ENVIRONMENT INCLUDING STRONG CURRENT AND BRACKISH WATER, FABRIC FORMS SHALL BE RESISTANT TO PUNCTURE, ABRASION, AND LEAKAGE DURING AND AFTER PUMPING OPERATIONS. FABRIC FORMS SHALL BE ABLE TO FORM AGAINST UNEVEN SURFACES AND BE FILLED TO A HEIGHT OF AT LEAST 12", CONTRACTOR IS RESPONSIBLE FOR ENSURING FILL AND VENT PORTS ARE NOT OBSTRUCTED DURING PUMPING OPERATIONS.

GROUT:

- AS RECOMMENDED BY FABRIC FORM MANUFACTURER.

SIP FORMS:

- STAY-IN-PLACE (SIP) FORMS SHALL BE SUITABLE FOR AN AGGRESSIVE MARINE ENVIRONMENT AND NON-CORRODIBLE. SUGGESTED MATERIALS INCLUDE VINYL, PLASTIC, PVC, AND FIBER-REINFORCED POLYMERS (FRP). TIMBER FORMWORK IS NOT ALLOWED FOR ANY PART OF THIS JOB.



AI ENGINEERS INC.
10 Orms Street, Suite 320
Providence, RI 02904
phone: (401) 270-5401
fax: (401) 270-5403
www.aiengineers.com



RHODE ISLAND
DEPARTMENT OF TRANSPORTATION

DESIGNED BY: SS
CHECKED BY: MG
DATE: 02/04/25
SHEET: 2
OF: 11

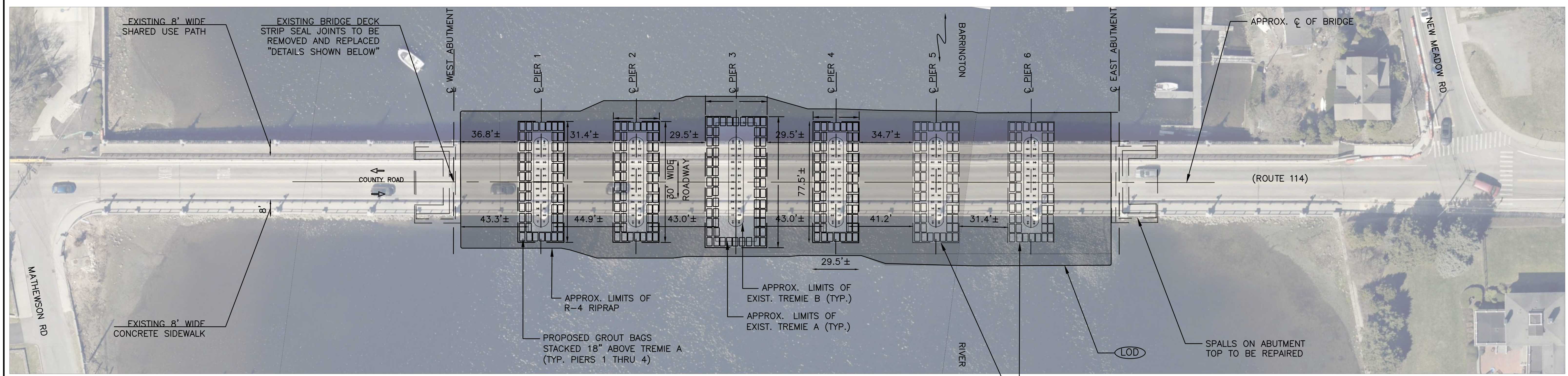
SCALE: NOT TO SCALE

REVISIONS			REVISIONS		
NO.	DATE	BY	NO.	DATE	BY

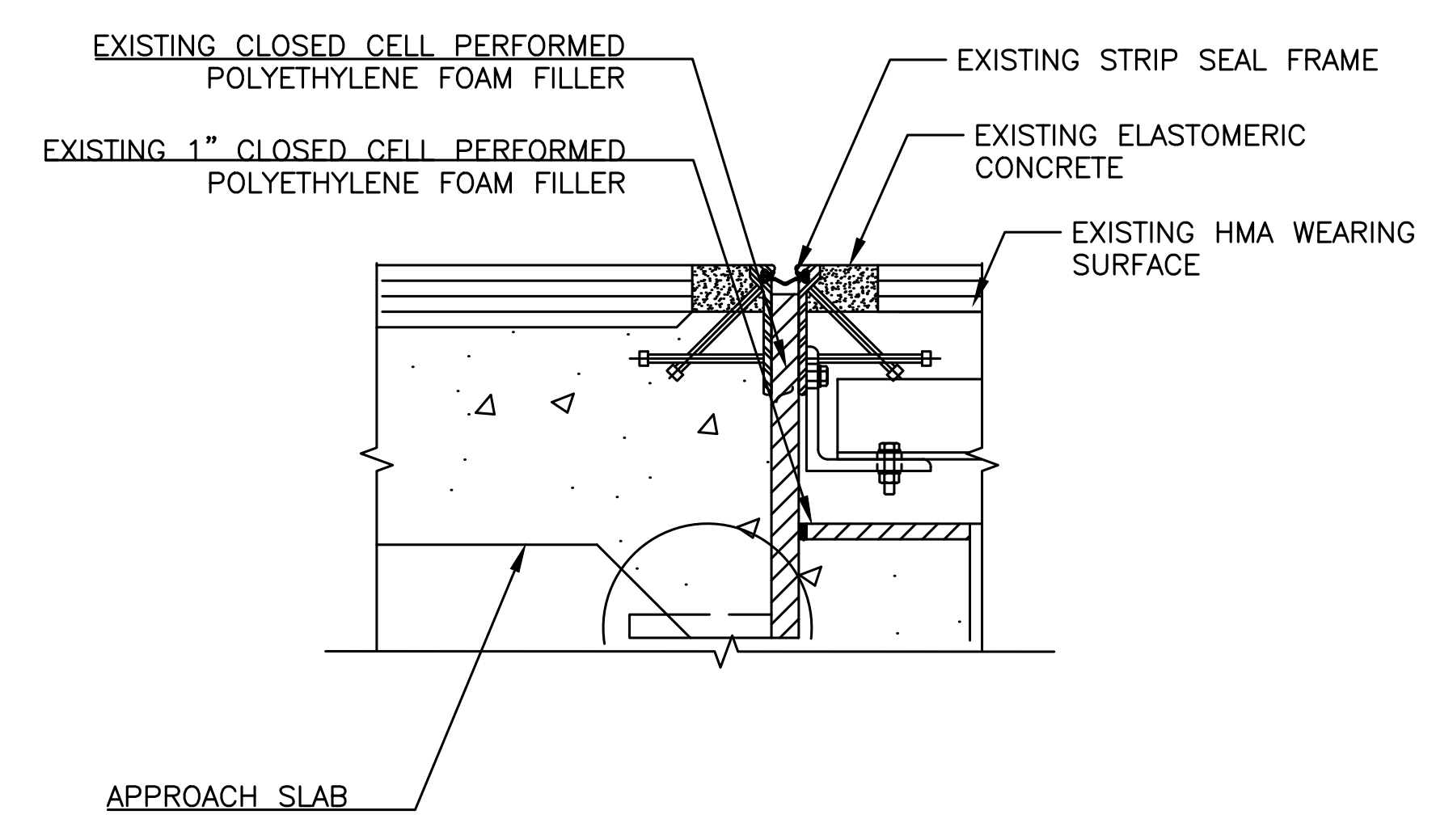
REHABILITATION OF
BARRINGTON BRIDGE NO. 012301

RHODE ISLAND

BRIDGE GENERAL NOTES



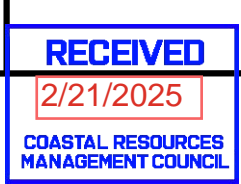
GENERAL PLAN
SCALE: 1" = 30'



STRIP SEAL JOINT DETAILS

NOTE:
1. AREA HATCHED SHOWS TOTAL LIMITS OF DISTURBANCE

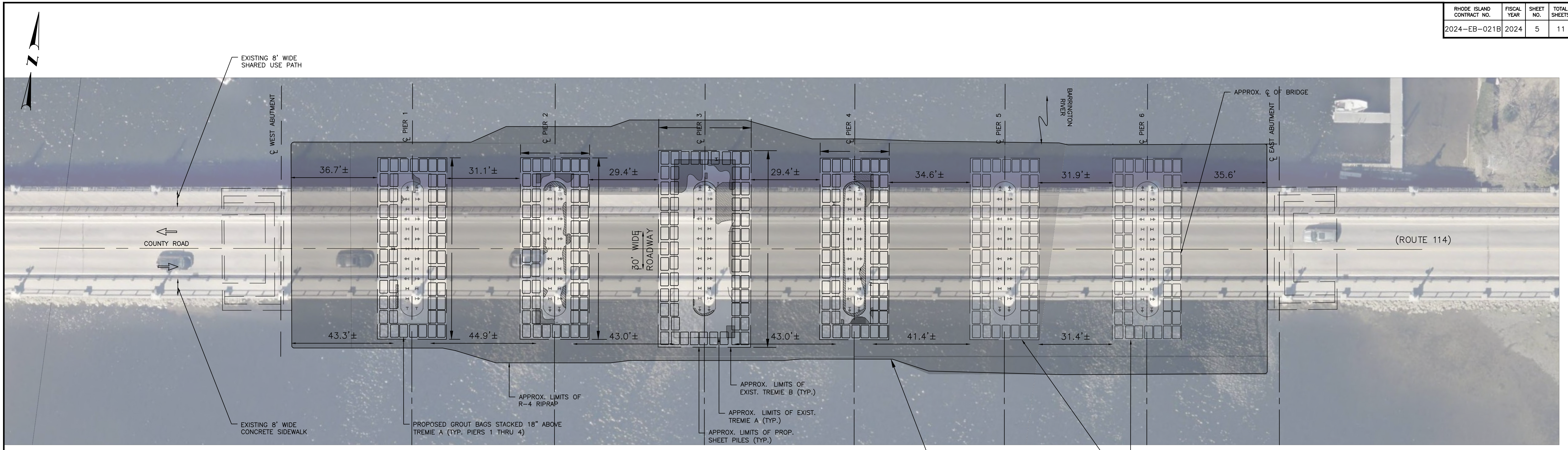
AI Engineers
AI ENGINEERS INC.
10 Orms Street, Suite 320
Providence, RI 02904
phone: (401) 270-5401
fax: (401) 270-5403
www.aiengineers.com



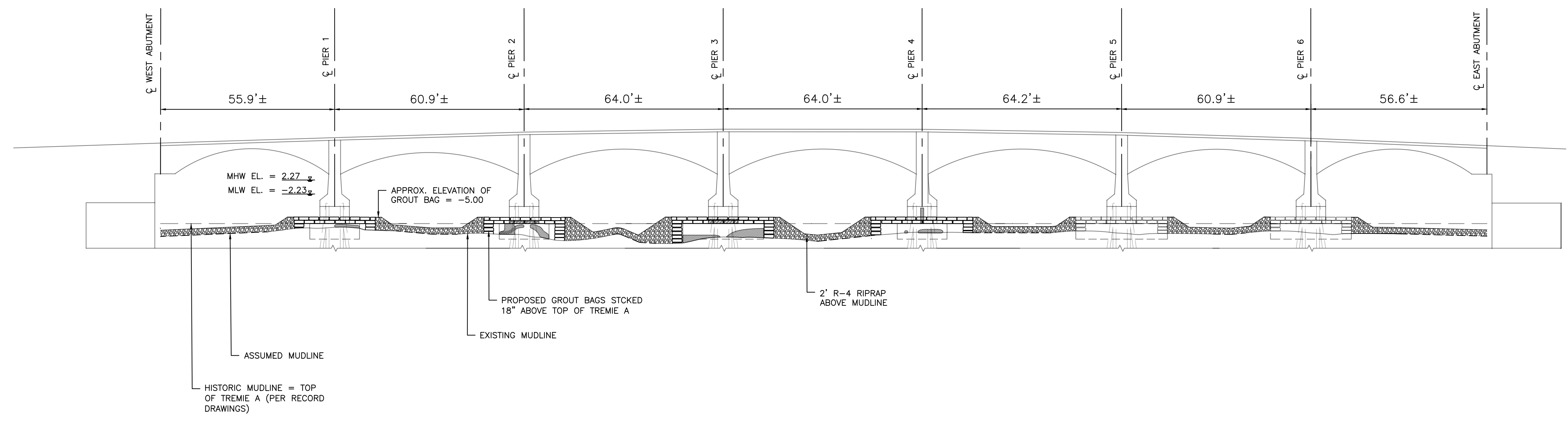
RI DOT RHODE ISLAND DEPARTMENT OF TRANSPORTATION

DESIGNED BY:	SS	SCALE:	1" = 30'
CHECKED BY:	MG		
DATE:	02/04/25		
SHEET:	4		
OF:	11		

REHABILITATION OF BARRINGTON BRIDGE NO. 012301
BARRINGTON RHODE ISLAND
GENERAL BRIDGE PLAN



GENERAL PLAN
SCALE: 1" = 20'



ELEVATION
SCALE: 1" = 20'

AI Engineers
AI ENGINEERS INC.
10 Orms Street, Suite 320
Providence, RI 02904
phone: (401) 270-5401
fax: (401) 270-5403
www.aiengineers.com

RECEIVED
12/21/2025
COASTAL RESOURCES
MANAGEMENT COUNCIL

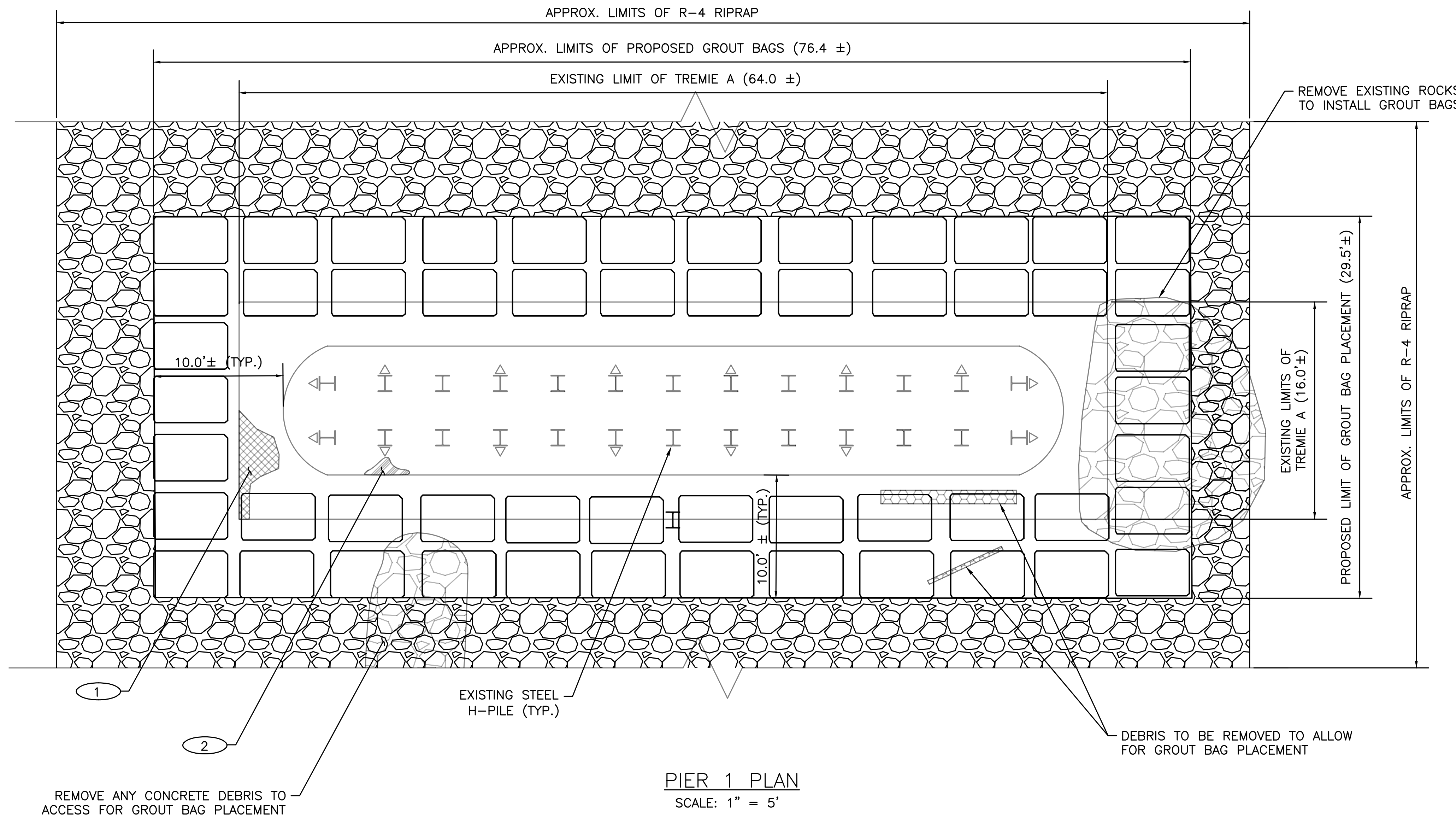
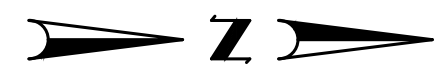
RI DOT RHODE ISLAND
DEPARTMENT OF TRANSPORTATION

DESIGNED BY: SS
CHECKED BY: MG
DATE: 02/04/25
SHEET: 5
OF: 11

SCALE: 1" = 20'

REVISIONS			REVISIONS		
NO.	DATE	BY	NO.	DATE	BY

REHABILITATION OF
BARRINGTON BRIDGE NO. 012301
BARRINGTON RHODE ISLAND
GENERAL BRIDGE ELEVATION

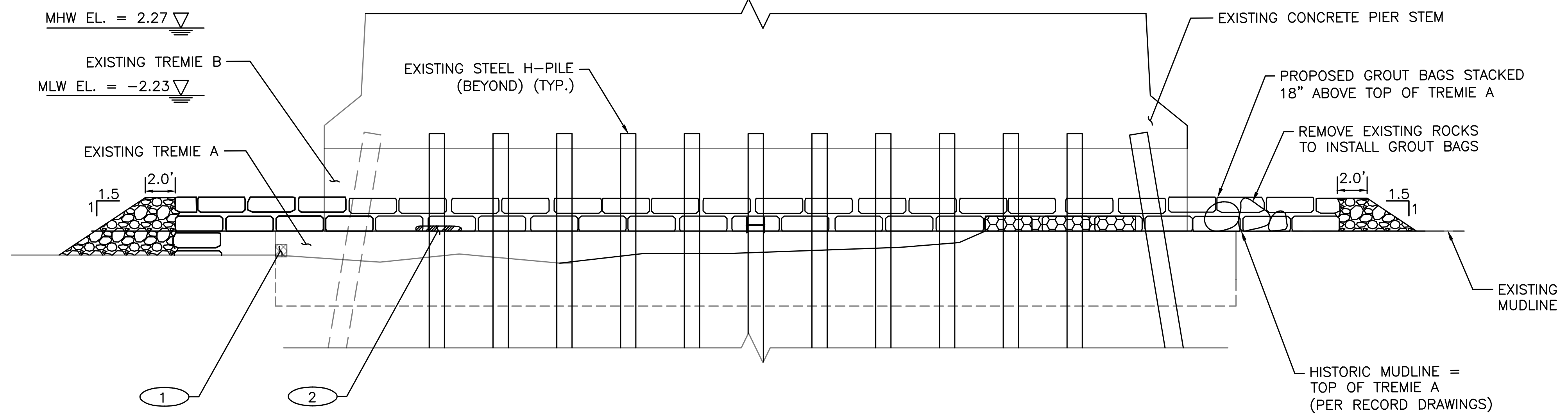


PIER 1 PLAN
SCALE: 1" = 5'

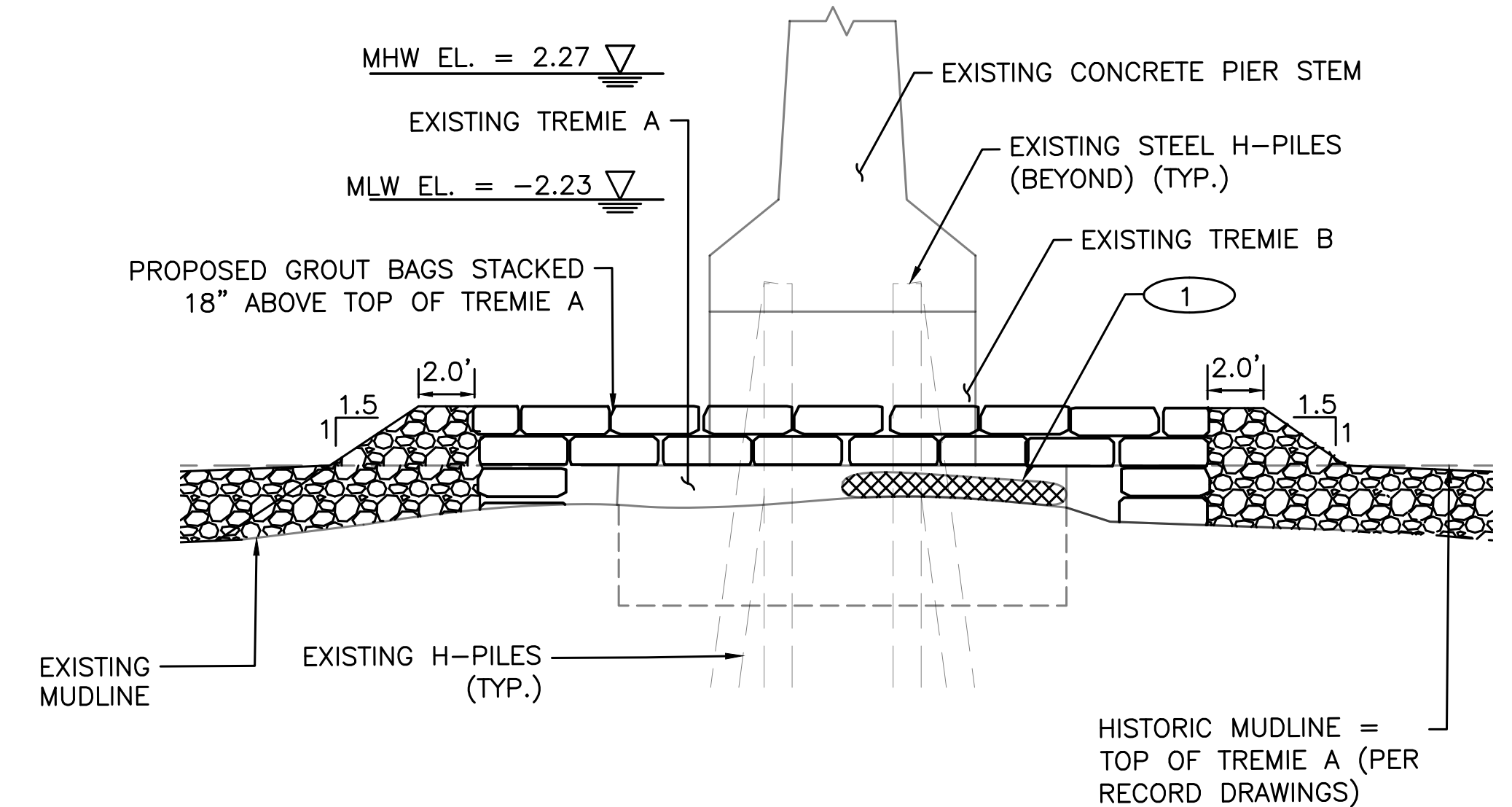
NOTES:

1. THE EXISTING CONFIGURATION AND DIMENSIONS OF THE PIER ARE BASED ON THE RECORD DRAWINGS, 2019 REPAIR PLANS, AND ABOVE AND UNDERWATER INSPECTION PERFORMED BY COLLINS PERFORMED IN 2024.
2. MEAN LOW WATER (MLW) AND MEAN HIGH WATER (MHW) ELEVATIONS ARE BASED ON ORIGINAL RECORD DRAWINGS.
3. ALL EXISTING VOIDS TO BE REPAIRED PRIOR TO PLACEMENTS OF GROUT BAGS.
4. REFER SHEET NO. 04 GENERAL BRIDGE PLAN FOR LIMITS OF DISTURBANCE

VOID SUMMARY	
VOID	APPROX. DIMENSIONS
1	8'L X 10"H X 3'D (AVG 12"D)
2	3'L X 4"H X 16"D (6" AVG D)

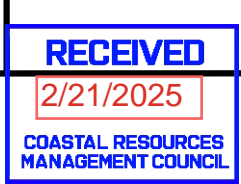


PIER 1 ELEVATION
SCALE: 1" = 5'



PIER 1 SECTION PLAN
SCALE: 1" = 5'

AI Engineers
AI ENGINEERS INC.
10 Orms Street, Suite 320
Providence, RI 02904
phone: (401) 270-5401
fax: (401) 270-5403
www.aiengineers.com

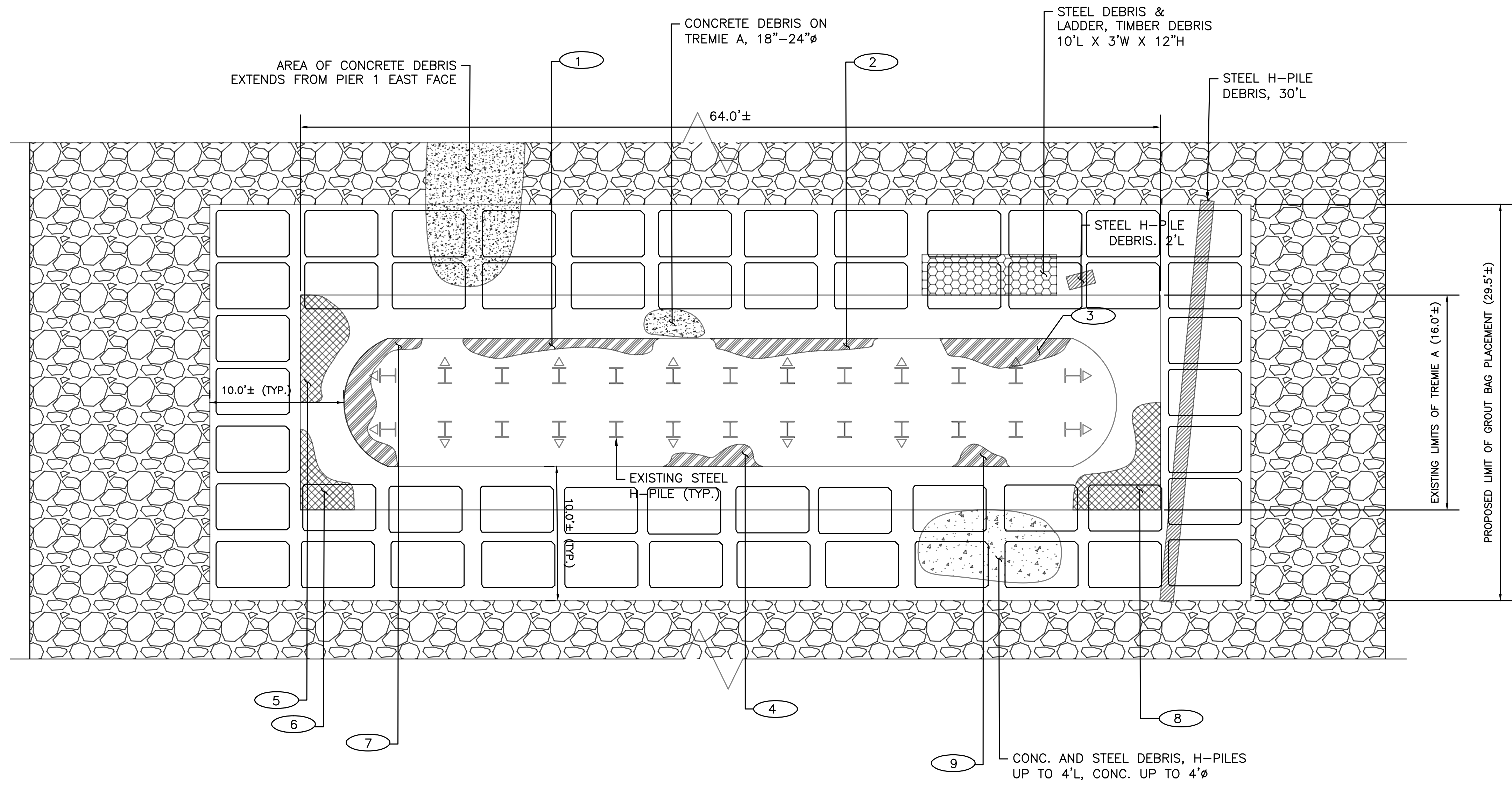


RI DOT RHODE ISLAND
DEPARTMENT OF TRANSPORTATION

DESIGNED BY: SS
CHECKED BY: MG
DATE: 02/04/25
SHEET: 6
OF: 11
SCALE: 1" = 5'

REVISIONS			REVISIONS		
NO.	DATE	BY	NO.	DATE	BY

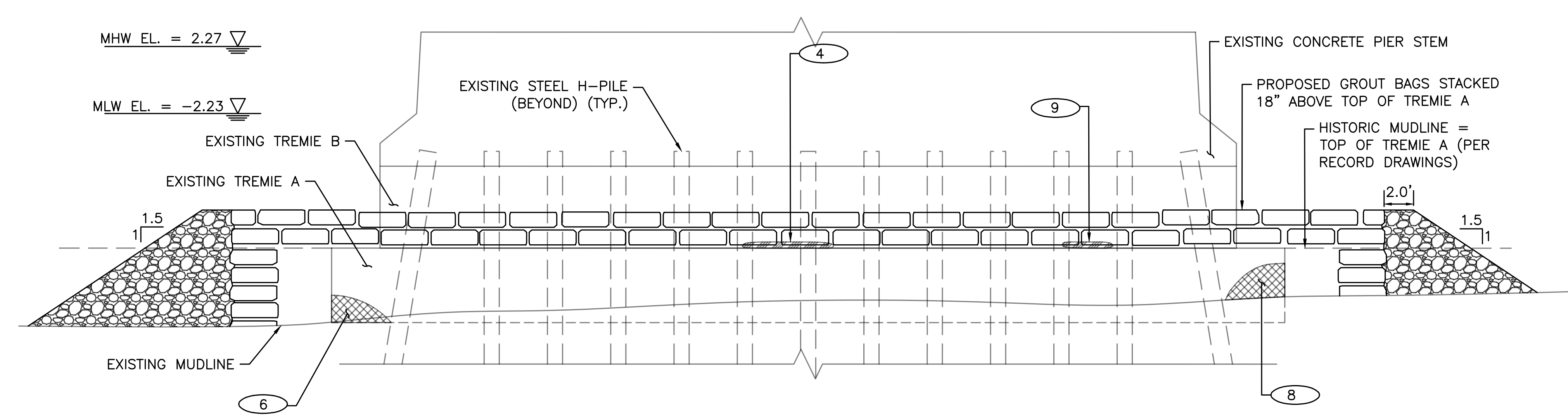
REHABILITATION OF
BARRINGTON BRIDGE NO. 012301
BARRINGTON RHODE ISLAND
PIER 1 REPAIR DETAILS



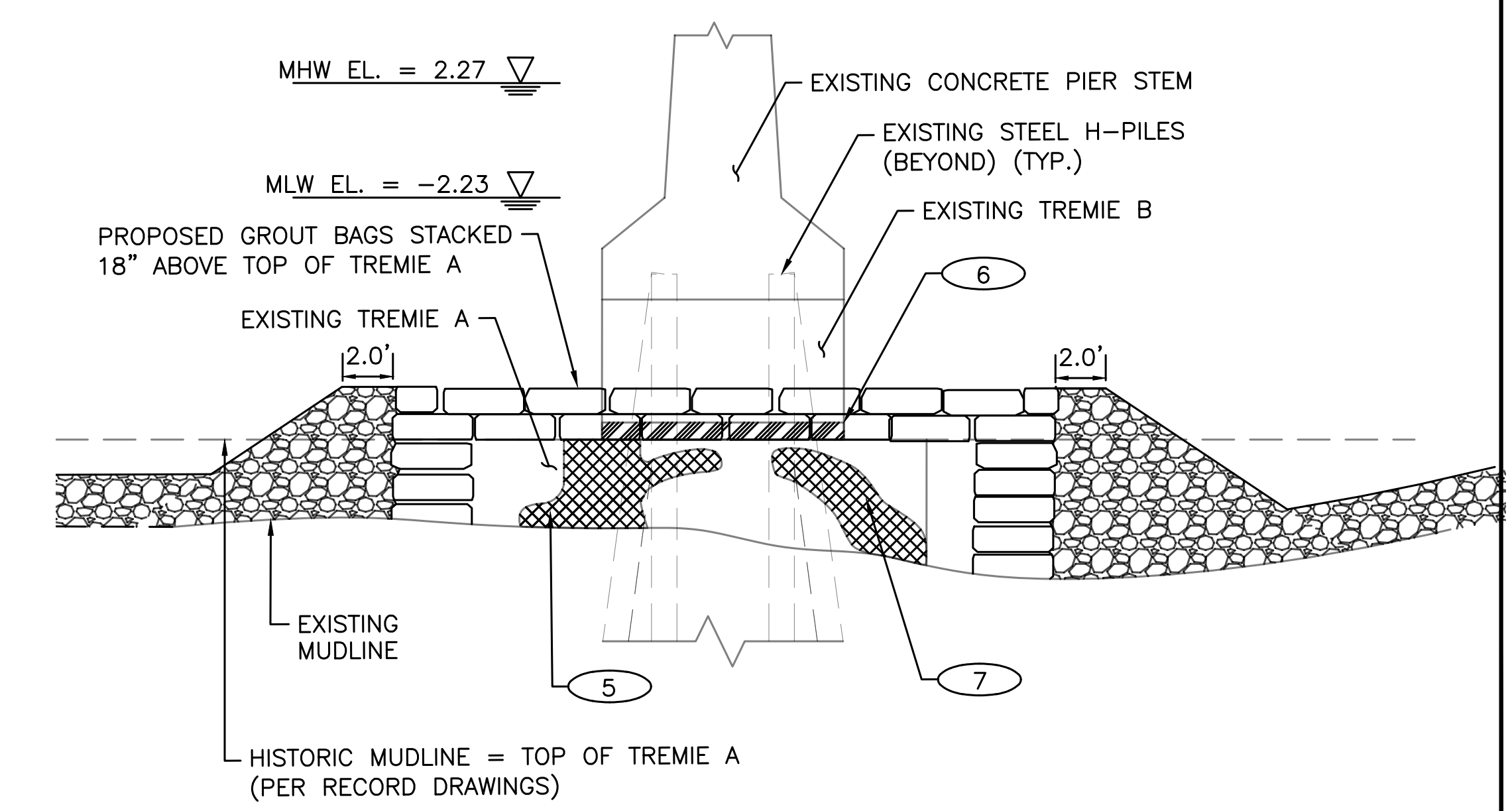
- NOTES:**
1. THE EXISTING CONFIGURATION AND DIMENSIONS OF THE PIER ARE BASED ON THE RECORD DRAWINGS, 2019 REPAIR PLANS, AND ABOVE AND UNDERWATER INSPECTION PERFORMED BY COLLINS PERFORMED IN 2024.
 2. MEAN LOW WATER (MLW) AND MEAN HIGH WATER (MHW) ELEVATIONS ARE BASED ON ORIGINAL RECORD DRAWINGS.
 3. ALL EXISTING VOIDS TO BE REPAIRED PRIOR TO PLACEMENTS OF GROUT BAGS.
 4. REFER SHEET NO. 04 GENERAL BRIDGE PLAN FOR LIMITS OF DISTURBANCE

VOID SUMMARY	
VOID	APPROX. DIMENSIONS
1	15'L X 4"H X 18"D (10" AVG)
2	12'L X 9"H X 18"(D) (10" AVG)
3	6"L X 9"H X 26"D
4	6'L X 5"H X 20"D (10" AVG D)
5	8'L X 11"H X 44"D (24" AVG D)
6	6'L (SOUTH FACE) X 4"L (EAST FACE) X 22"H X 24"D (FROM EAST FACE) AND 9"D(FROM SOUTH FACE)
7	18'L X 8"H X 25"D (14" AVG D)
8	8'L(NORTH FACE) X 4'L (EAST FACE) X 27"H X 3'D (2' AVG)
9	3'L X 5"H X 20"D (10" AVG D)

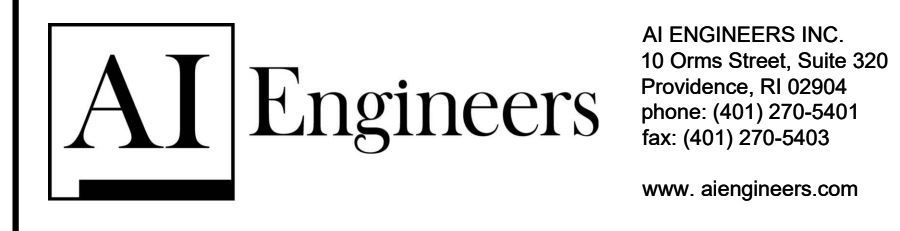
PIER 2 PLAN
SCALE: 1" = 5'



PIER 2 ELEVATION
SCALE: 1" = 5'

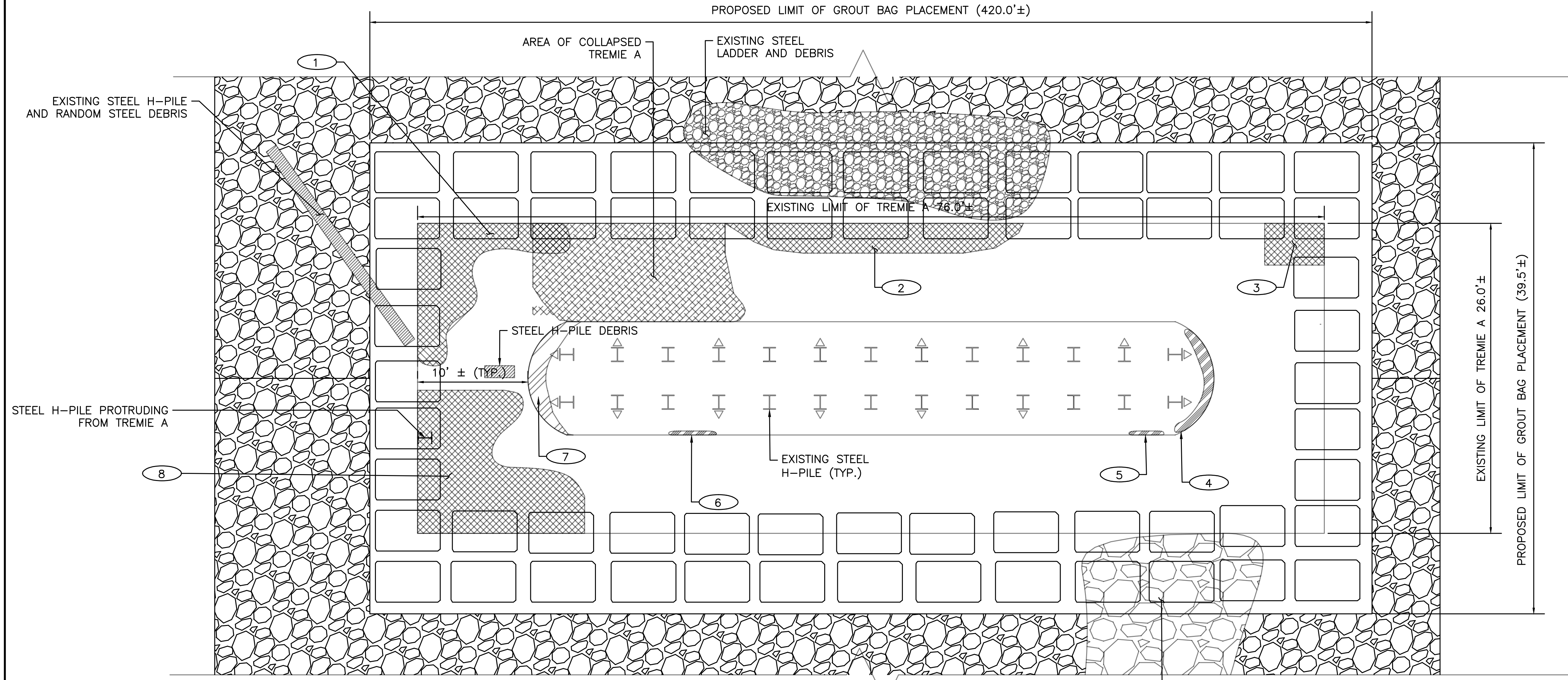


PIER 2 SECTION PLAN
SCALE: 1" = 5'



DESIGNED BY:	SS	SCALE:	1" = 5'
CHECKED BY:	MG		
DATE:	02/04/25		
SHEET:	7		
OF:	11		

REHABILITATION OF BARRINGTON BRIDGE NO. 012301
RHODE ISLAND
PIER 2 REPAIR DETAILS

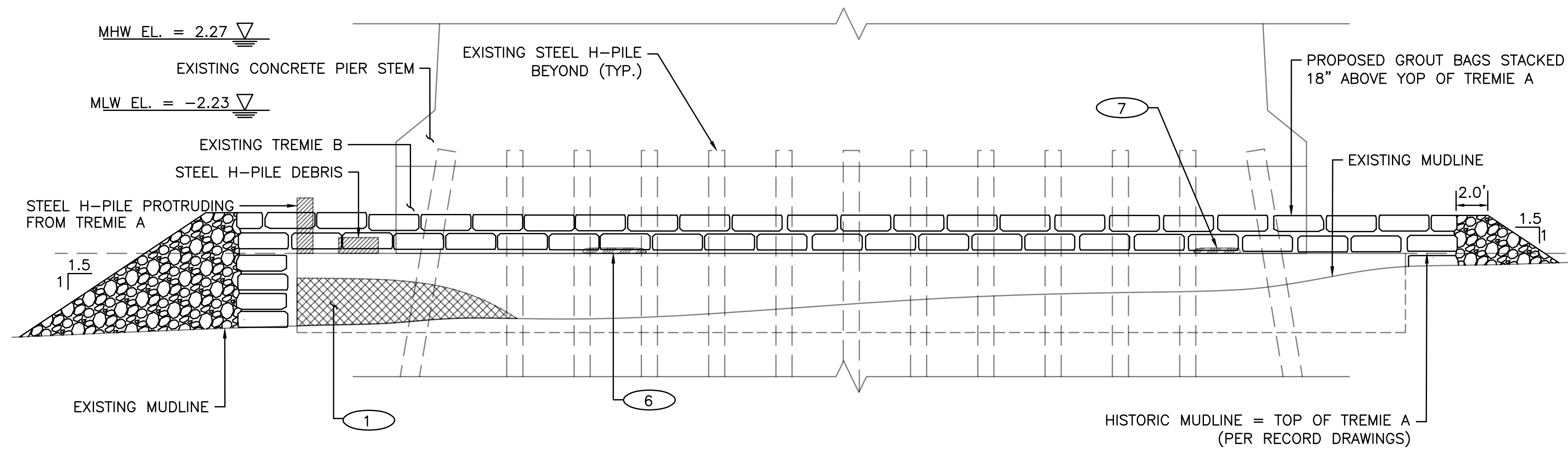


PIER 3 REPAIR PLAN

SCALE: 1" = 5'

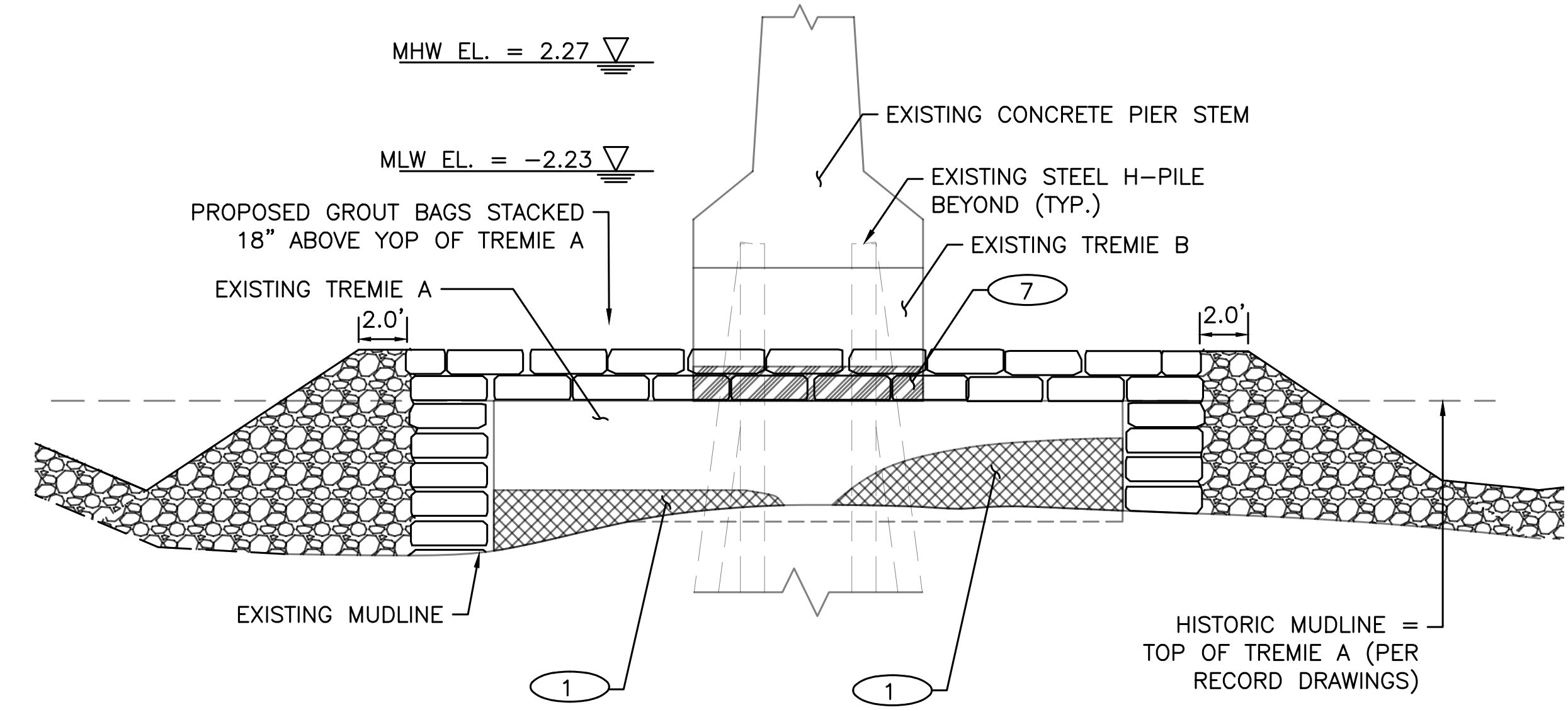
- NOTES:**
1. THE EXISTING CONFIGURATION AND DIMENSIONS OF THE PIER ARE BASED ON THE RECORD DRAWINGS, 2019 REPAIR PLANS, AND ABOVE AND UNDERWATER INSPECTION PERFORMED BY COLLINS PERFORMED IN 2024.
 2. MEAN LOW WATER (MLW) AND MEAN HIGH WATER (MHW) ELEVATIONS ARE BASED ON ORIGINAL RECORD DRAWINGS.
 3. ALL EXISTING VOIDS TO BE REPAIRED PRIOR TO PLACEMENTS OF GROUT BAGS.
 4. REFER SHEET NO. 04 GENERAL BRIDGE PLAN FOR LIMITS OF DISTURBANCE

VOID SUMMARY	
VOID	APPROX. DIMENSIONS
1	12'L (SOUTH FACE) X 12'L (NORTH FACE) X 2.5'H X 5'D (2.5' AVG)
2	25'L X 2.8'H X 30'D
3	3.5'L (NORTH FACE) X 5'L (WEST FACE) X 2'H X 3.7'D
4	12'L X 12"H X 14"D (8"AVG)
5	3'L X 3"H X 3" D BELOW TREMIE B
6	4'L X 3"H X 3"D
7	14'L X 17"H X 18"D (14" AVG)
8	VOID 12'L X 3'H X 9'D (SOUTH FACE); 12'L X 3'H X 7.5'D (EAST FACE)



PIER 3 ELEVATION

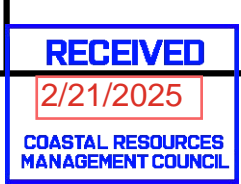
SCALE: 1" = 5'



PIER 3 SECTION PLAN

SCALE: 1" = 5'

AI ENGINEERS INC.
10 Orms Street, Suite 320
Providence, RI 02904
phone: (401) 270-5401
fax: (401) 270-5403
www.aiengineers.com

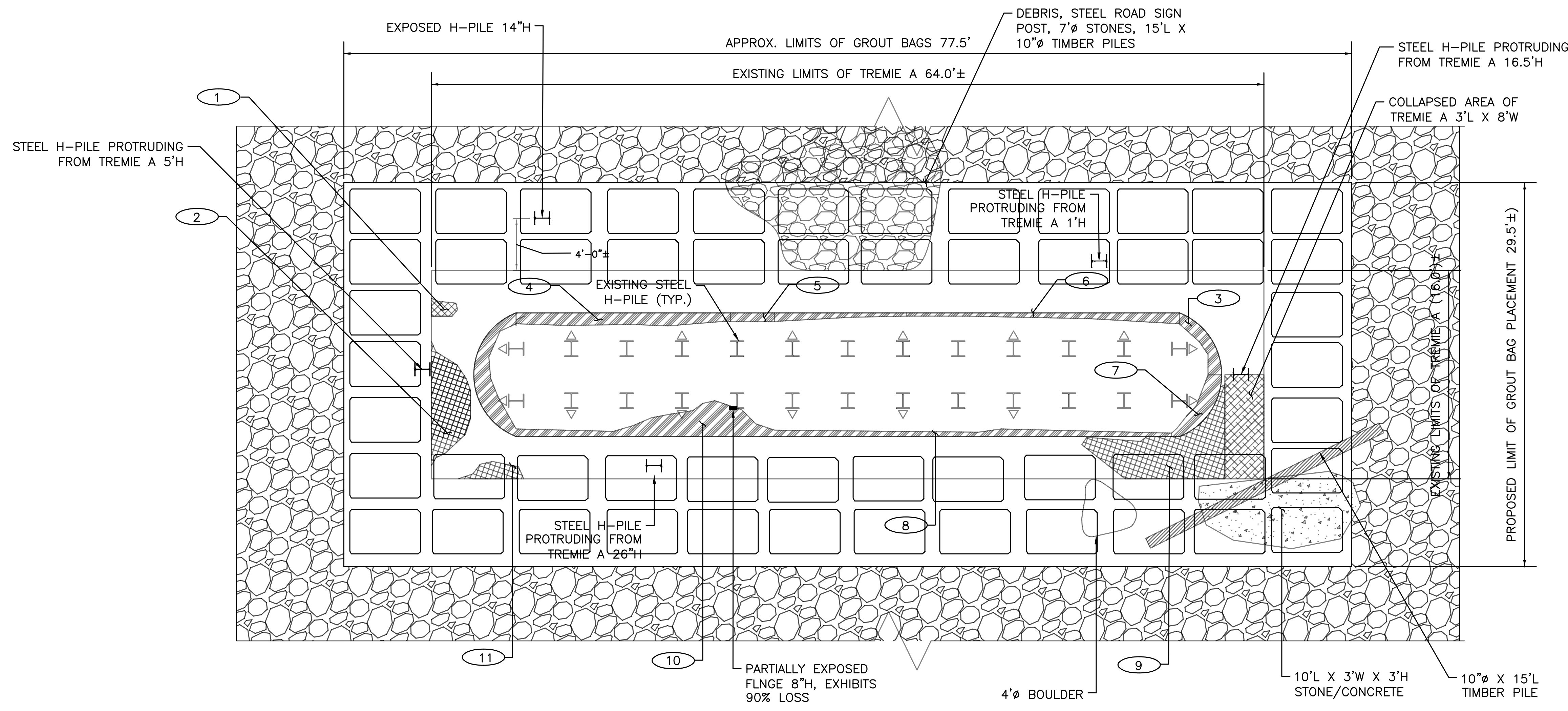


RHODE ISLAND
DEPARTMENT OF TRANSPORTATION

DESIGNED BY:	SS	SCALE:	1" = 5'
CHECKED BY:	MG		
DATE:	02/04/25		
SHEET:	8		
OF:	11		

REHABILITATION OF
BARRINGTON BRIDGE NO. 012301
RHODE ISLAND

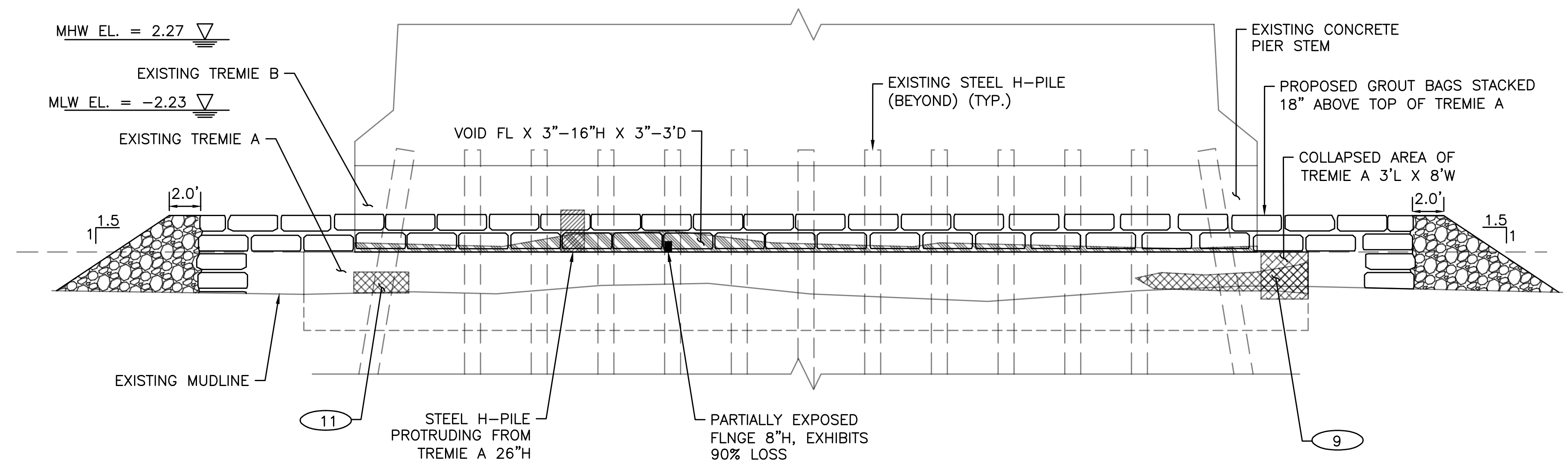
PIER 3 REPAIR DETAILS



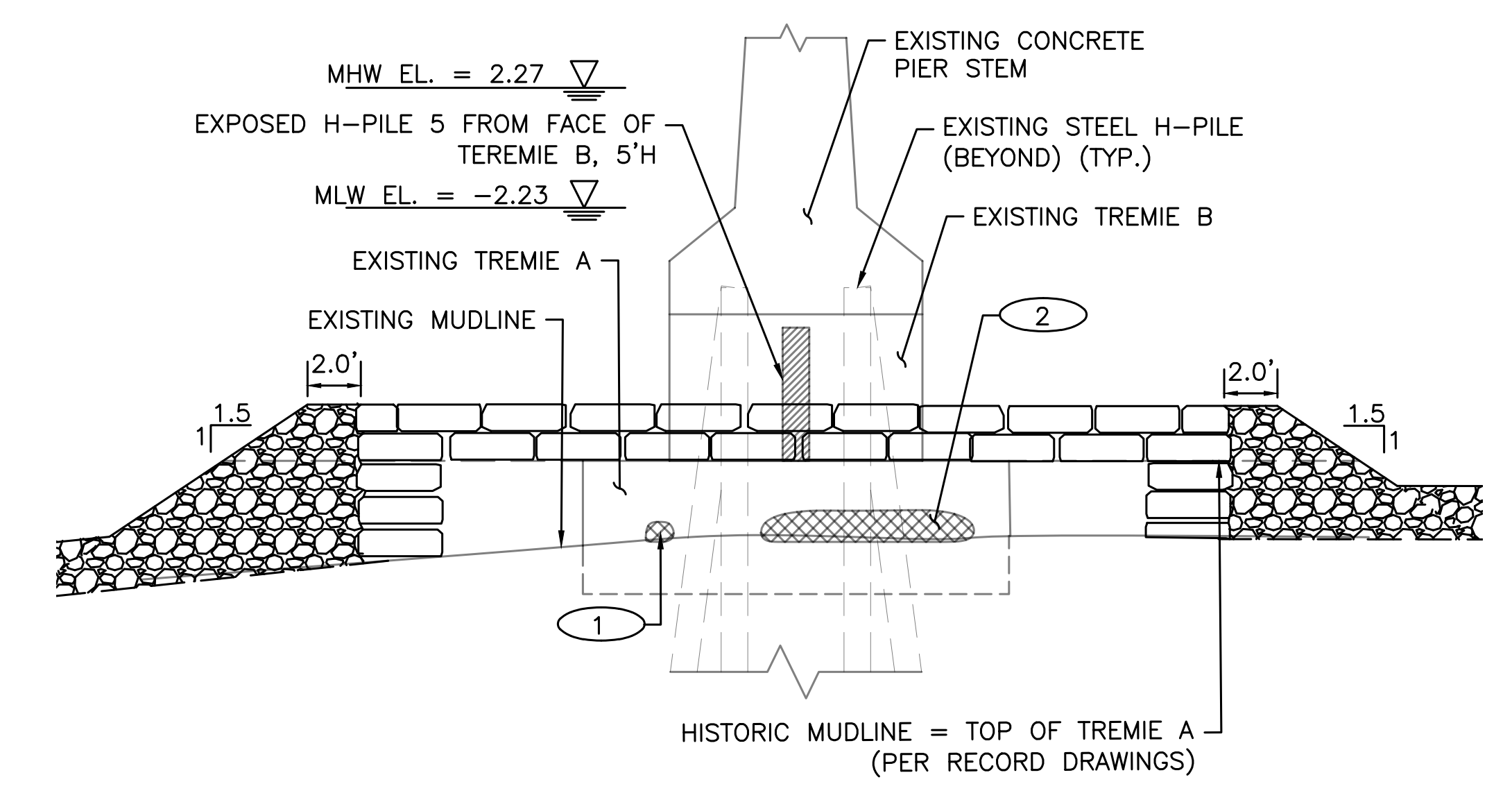
- NOTES:**
1. THE EXISTING CONFIGURATION AND DIMENSIONS OF THE PIER ARE BASED ON THE RECORD DRAWINGS, 2019 REPAIR PLANS, AND ABOVE AND UNDERWATER INSPECTION PERFORMED BY COLLINS PERFORMED IN 2024.
 2. MEAN LOW WATER (MLW) AND MEAN HIGH WATER (MHW) ELEVATIONS ARE BASED ON ORIGINAL RECORD DRAWINGS.
 3. ALL EXISTING VOIDS TO BE REPAIRED PRIOR TO PLACEMENTS OF GROUT BAGS.
 4. REFER SHEET NO. 04 GENERAL BRIDGE PLAN FOR LIMITS OF DISTURBANCE

VOID SUMMARY	
VOID	APPROX. DIMENSIONS
1	1'L X 9"H X 2'D
2	8'L X 14"H X 3'D
3	6'L X 5"H X 10'D
4	16'L X 8"H X 12'D
5	3'L X 8"H X 6'D
6	FL X 3"H X 3'D
7	6'L X 4"H X 16'D
8	FL X 3"H X 3'D
9	15'L X 2"H X 11'D
10	6.5'L X 16"H X 3'D
11	3.5'L X 16"H X 2'D

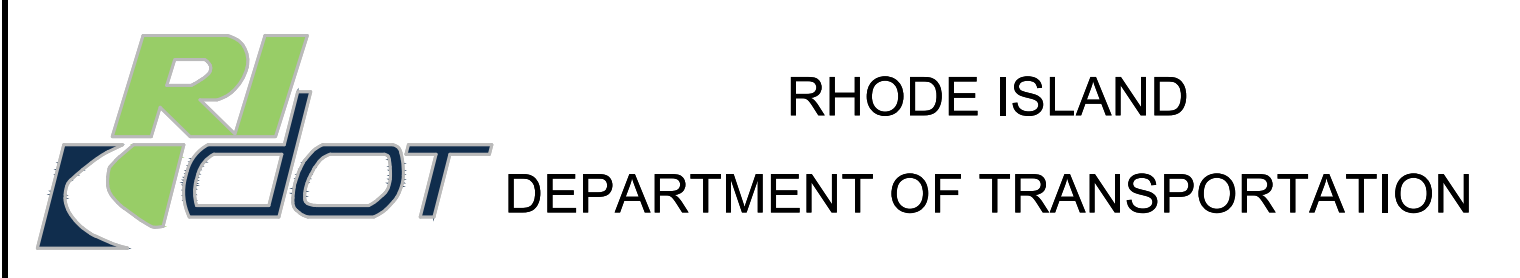
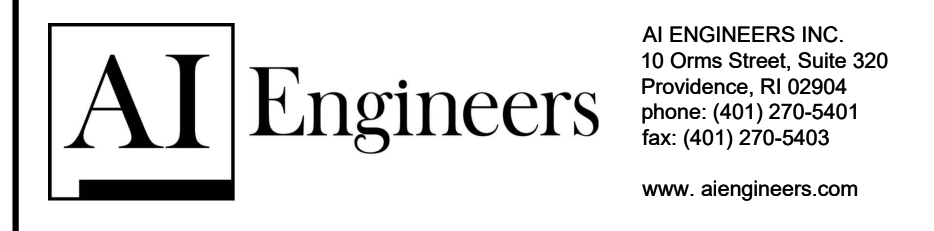
PIER 4 REPAIR PLAN
SCALE: 1" = 5'



PIER 4 ELEVATION
SCALE: 1" = 5'



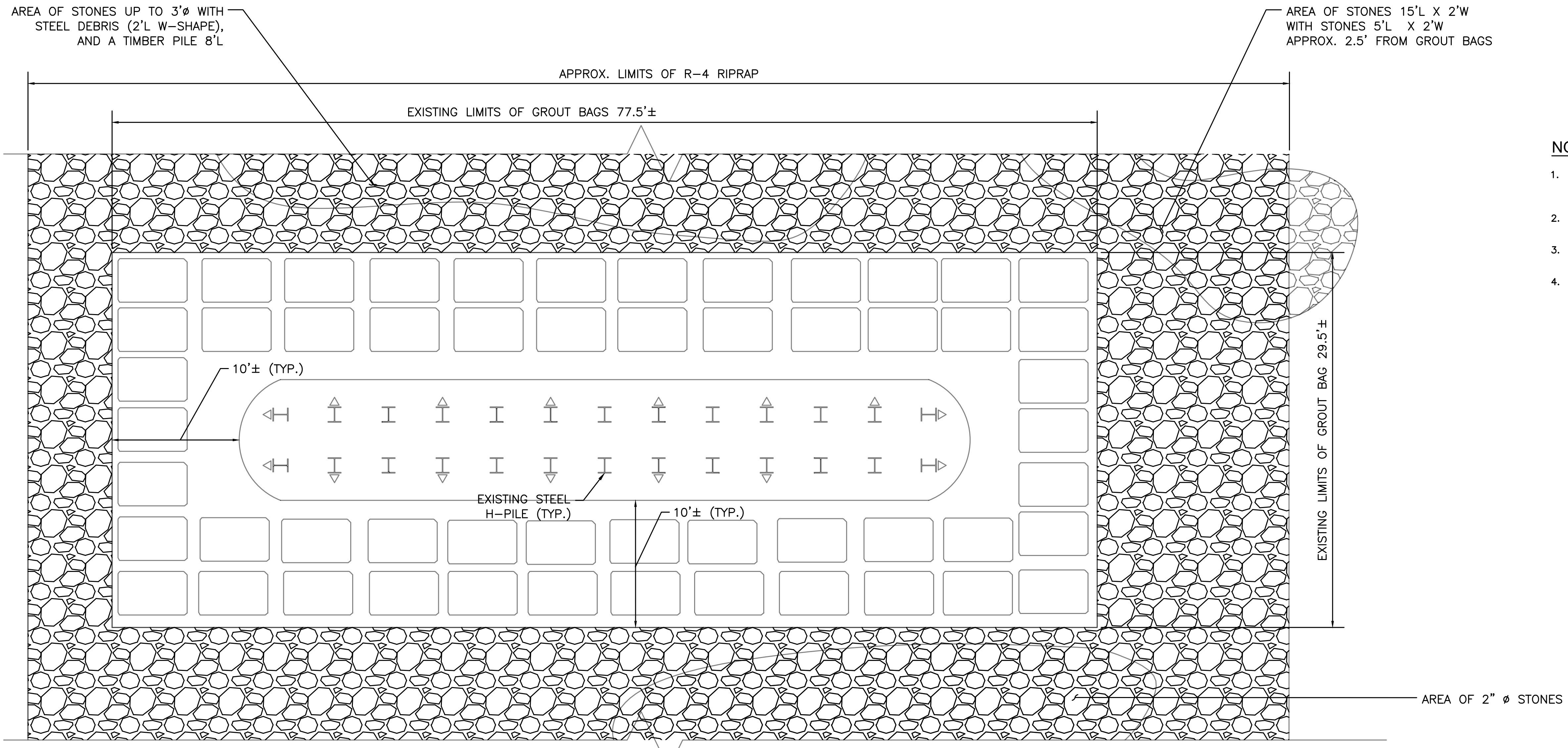
PIER 4 SECTION PLAN
SCALE: 1" = 5'



DESIGNED BY:	SS	SCALE:	1" = 5'
CHECKED BY:	MG		
DATE:	02/04/25		
SHEET:	9		
OF:	11		

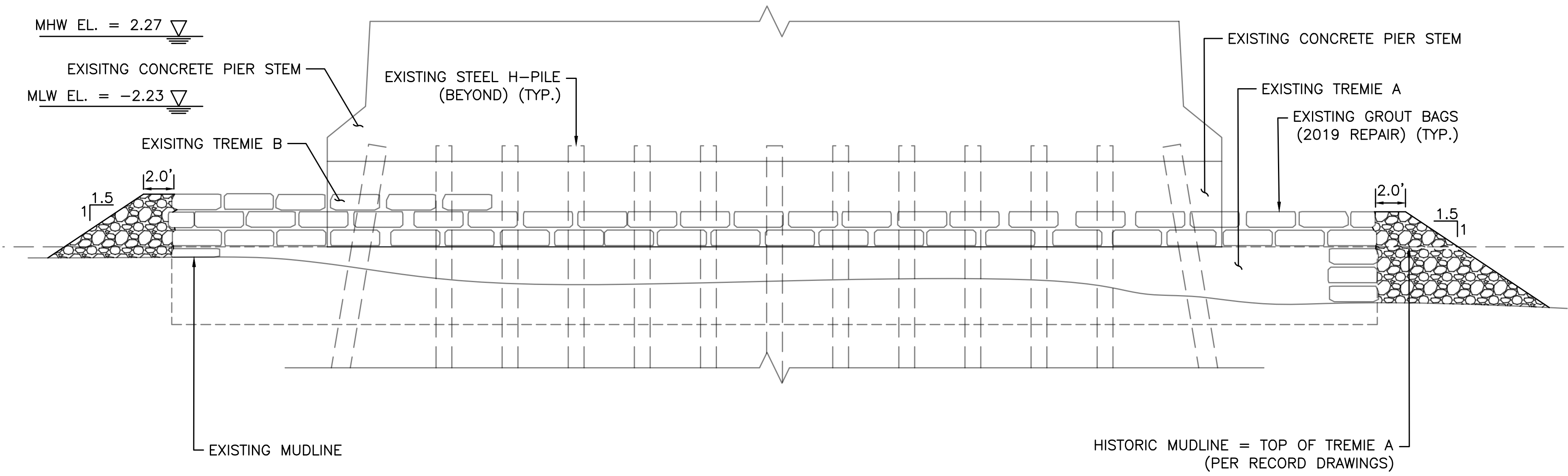
REHABILITATION OF BARRINGTON BRIDGE NO. 012301
RHODE ISLAND

PIER 4 REPAIR DETAILS

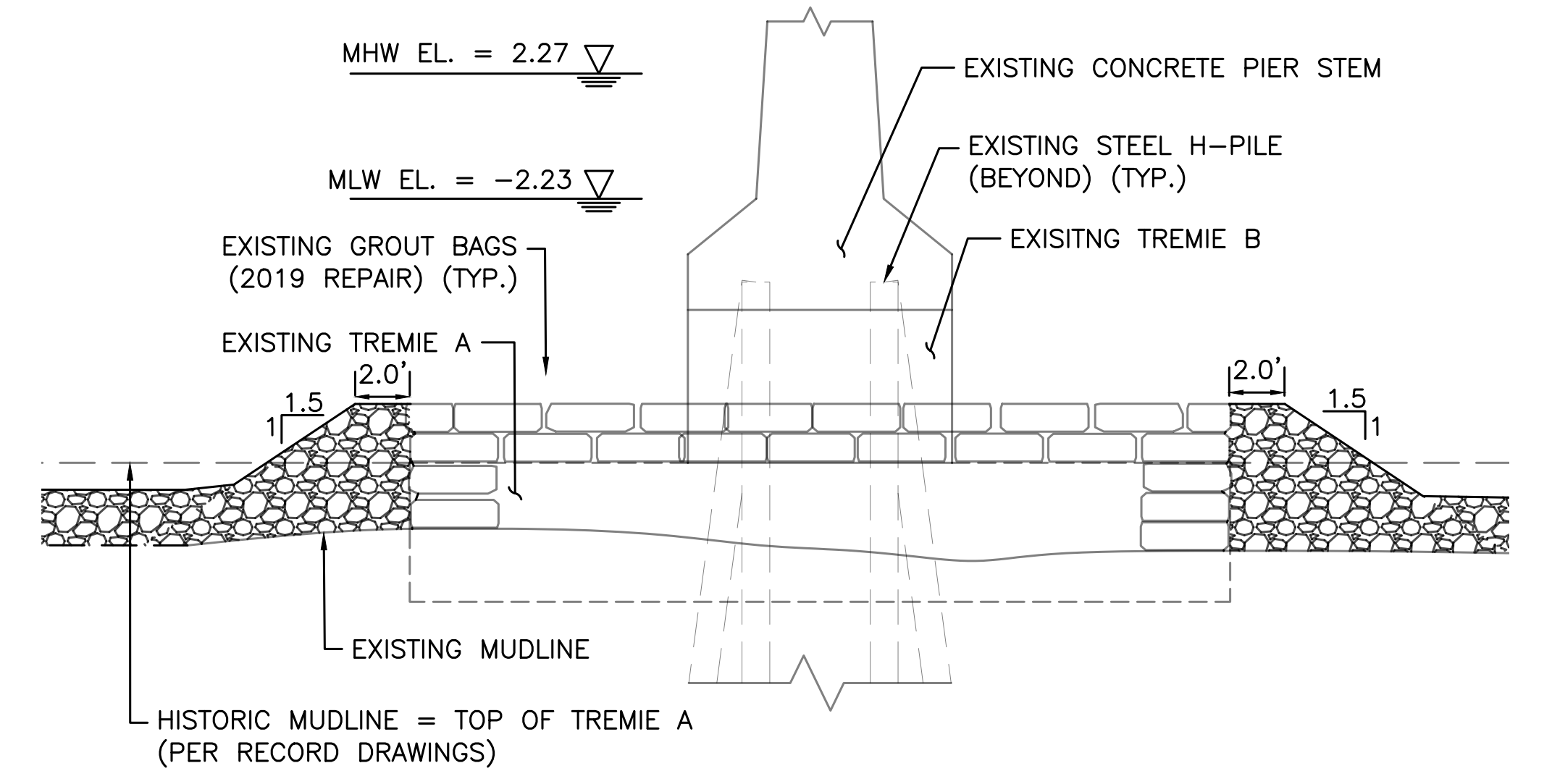


- NOTES:**
1. THE EXISTING CONFIGURATION AND DIMENSIONS OF THE PIER ARE BASED ON THE RECORD DRAWINGS, 2019 REPAIR PLANS, AND ABOVE AND UNDERWATER INSPECTION PERFORMED BY COLLINS PERFORMED IN 2024.
 2. MEAN LOW WATER (MLW) AND MEAN HIGH WATER (MHW) ELEVATIONS ARE BASED ON ORIGINAL RECORD DRAWINGS.
 3. ALL EXISTING VOIDS TO BE REPAIRED PRIOR TO PLACEMENTS OF GROUT BAGS.
 4. REFER SHEET NO. 04 GENERAL BRIDGE PLAN FOR LIMITS OF DISTURBANCE

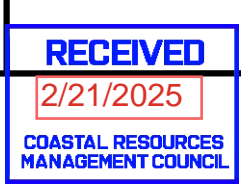
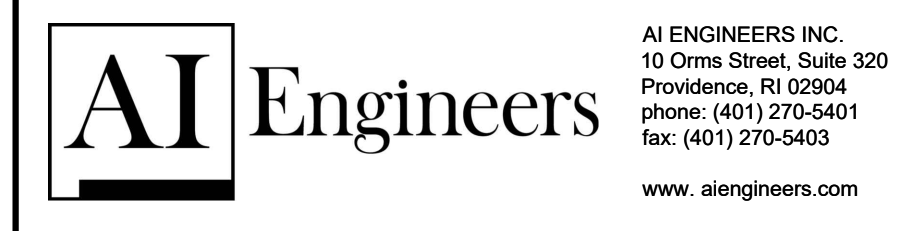
PIER 5 REPAIR PLAN
SCALE: 1" = 5'



PIER 5 ELEVATION
SCALE: 1" = 5'



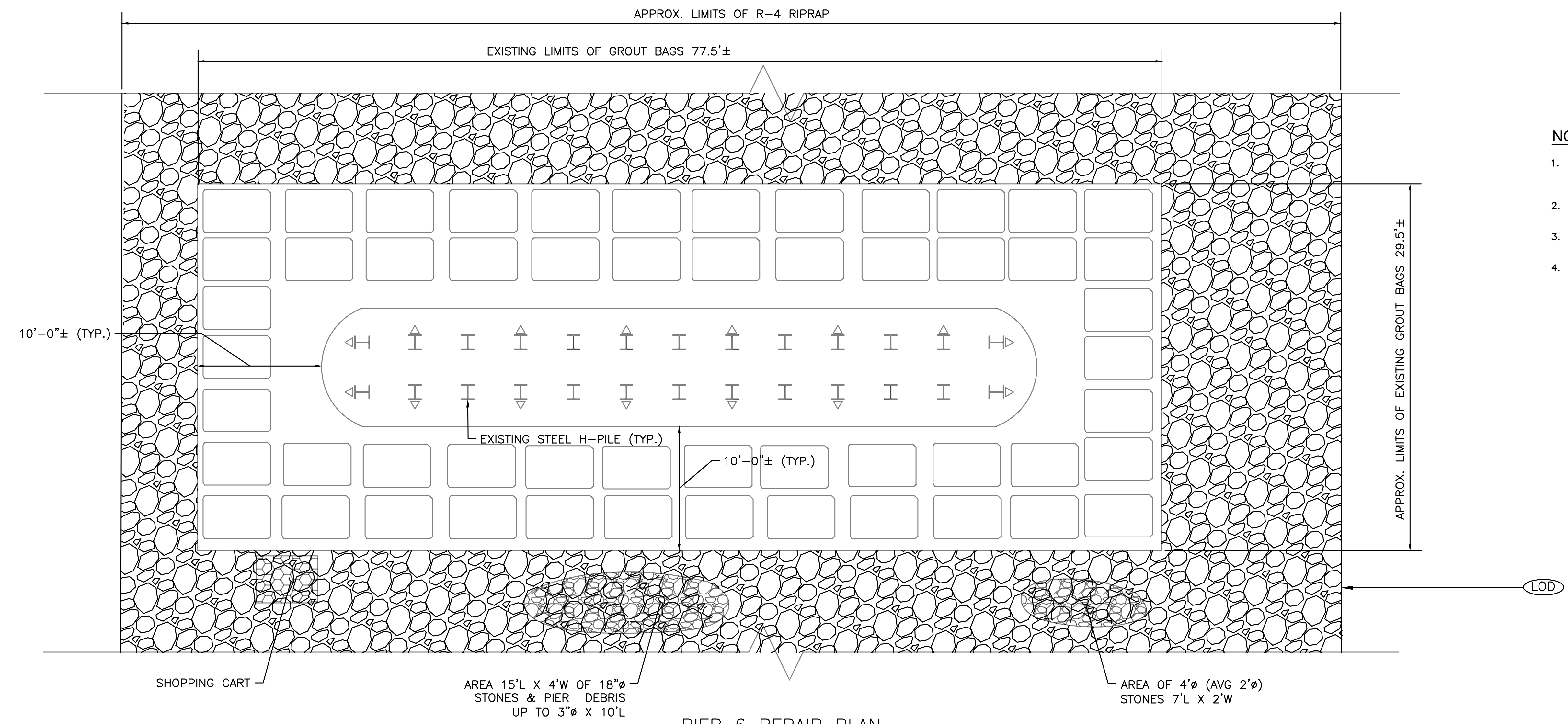
PIER 5 SECTION PLAN
SCALE: 1" = 5'



DESIGNED BY:	SS	SCALE:	1" = 5'
CHECKED BY:	MG		
DATE:	02/04/25		
SHEET:	10		
OF:	11		

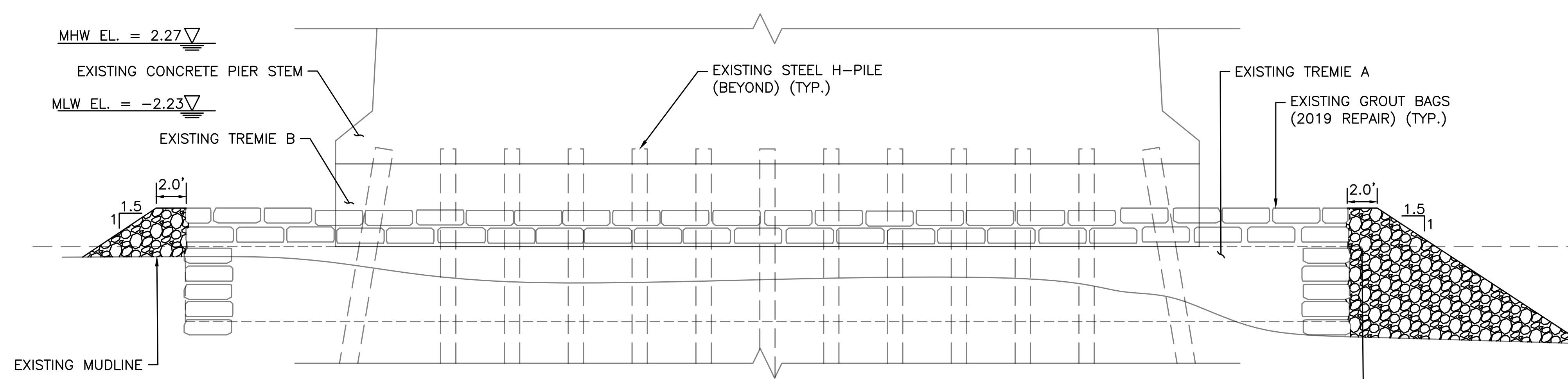
REHABILITATION OF
BARRINGTON BRIDGE NO. 012301
RHODE ISLAND

PIER 5 REPAIR DETAILS

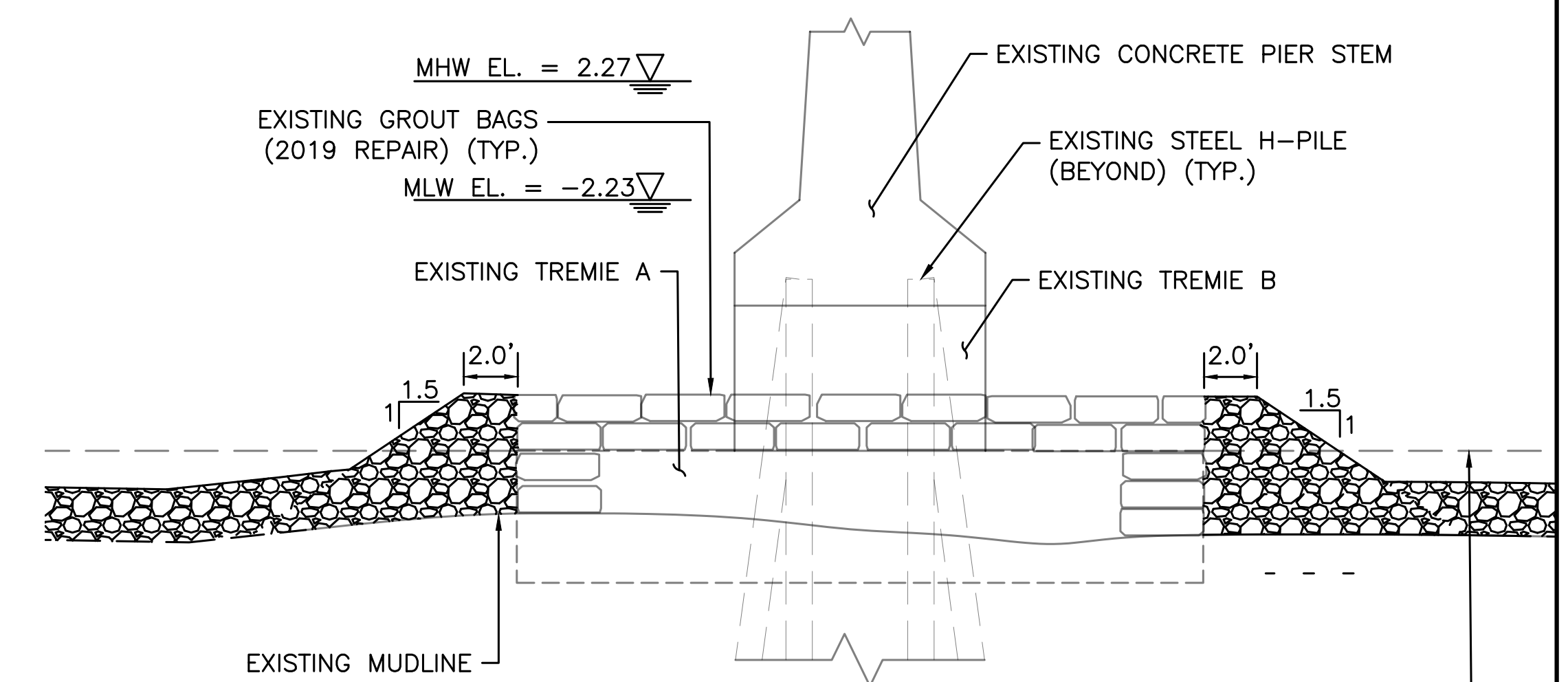


- NOTES:**
1. THE EXISTING CONFIGURATION AND DIMENSIONS OF THE PIER ARE BASED ON THE RECORD DRAWINGS, 2019 REPAIR PLANS, AND ABOVE AND UNDERWATER INSPECTION PERFORMED BY COLLINS PERFORMED IN 2024.
 2. MEAN LOW WATER (MLW) AND MEAN HIGH WATER (MHW) ELEVATIONS ARE BASED ON ORIGINAL RECORD DRAWINGS.
 3. ALL EXISTING VOIDS TO BE REPAIRED PRIOR TO PLACEMENTS OF GROUT BAGS.
 4. REFER SHEET NO. 04 GENERAL BRIDGE PLAN FOR LIMITS OF DISTURBANCE

PIER 6 REPAIR PLAN
SCALE: 1" = 5'



PIER 6 ELEVATION
SCALE: 1" = 5'



PIER 6 SECTION PLAN
SCALE: 1" = 5'

HISTORIC MUDLINE = TOP OF TREMIE A (PER RECORD DRAWINGS)

HISTORIC MUDLINE = TOP OF TREMIE A (PER RECORD DRAWINGS)

AI Engineers
AI ENGINEERS INC.
10 Orms Street, Suite 320
Providence, RI 02904
phone: (401) 270-5401
fax: (401) 270-5403
www.aiengineers.com



RI DOT RHODE ISLAND DEPARTMENT OF TRANSPORTATION

DESIGNED BY:	SS	SCALE:	1" = 5'
CHECKED BY:	MG		
DATE:	02/04/25		
SHEET:	11		
OF:	11		

REHABILITATION OF BARRINGTON BRIDGE NO. 012301
RHODE ISLAND
PIER 6 REPAIR DETAILS