

LOCUS



APPLICATION BY:
 Shawn M. and Lisa Anne Guertin
 45 Mathewson Rd
 Barrington RI 02806

To replace existing 150 sf approved float (A*2012-2-74) with reconfigured 150 sf float, to improve docking

Application submitted by:
 Ken Anderson PE
 725 N Main Rd
 Jamestown, RI 02835

Contractor:
 TBD



NTS

KENNETH W. ANDERSON

REGISTERED PROFESSIONAL ENGINEER
 5/30/25

GUERTIN FLOAT MODIFICATION **RECEIVED**

45 MATHEWSON ROAD
 BARRINGTON, RI 02806

JUN 25 2025

COASTAL RESOURCES
 MANAGEMENT COUNCIL

by	KWA	NOTED scale	5/30/25 date	1 of 6 sheet
----	-----	----------------	-----------------	-----------------



LO CUS PLAT 25, LOT 51 - BARRINGTON RI PLAT MAP



LOOKING E/SE

KENNETH W. ANDERSON

No. 5063

REGISTERED PROFESSIONAL ENGINEER

.....

GUERTIN FLOAT RECONFIGURATION

45 MATHEWSON RD
BARRINGTON RI 02806

RECEIVED
JUN 25 2025
COASTAL RESOURCES
MANAGEMENT COUNCIL

by KWA

scale NTS

date 5/30/25

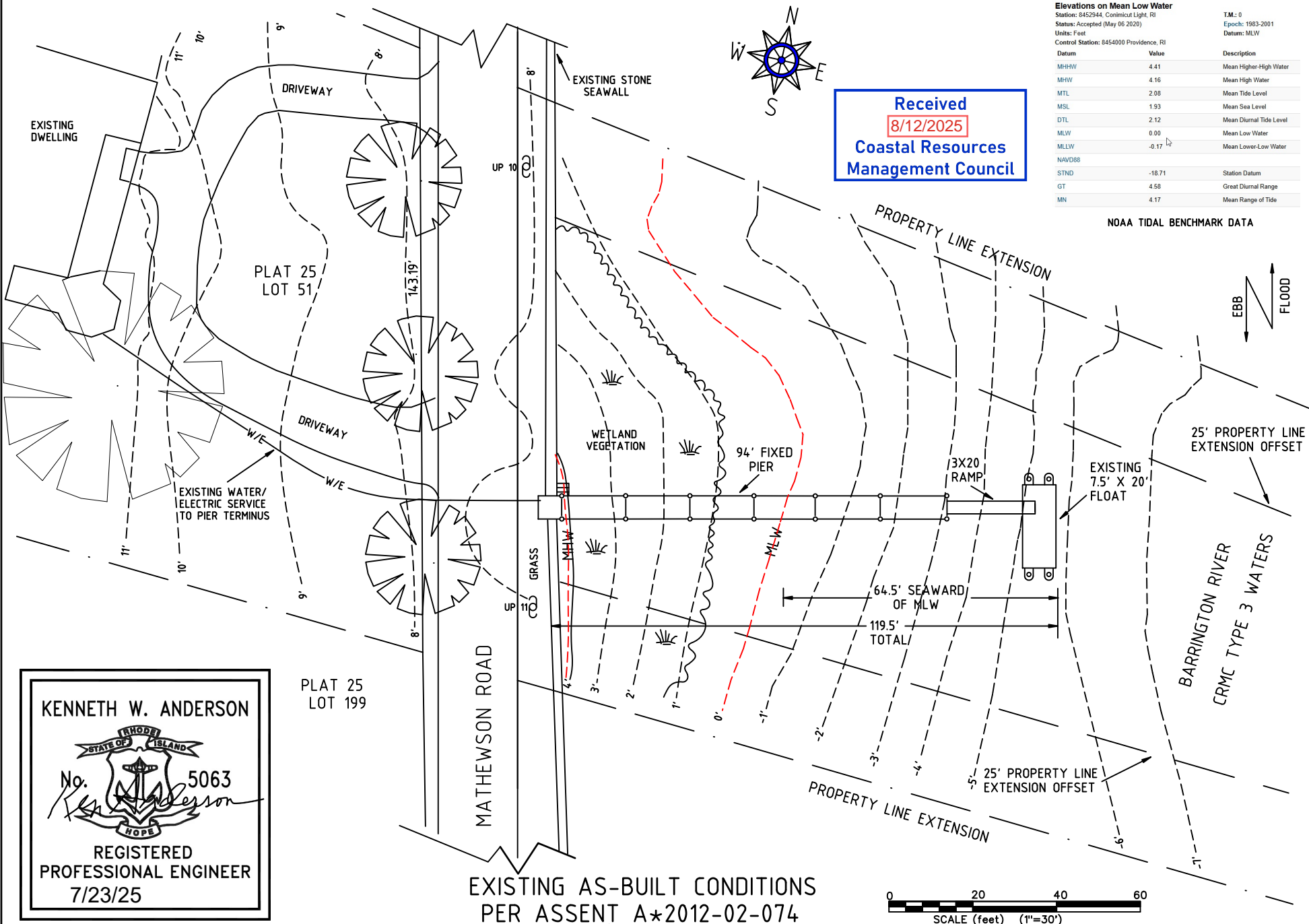
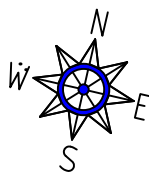
sheet 2 OF 6

Elevations on Mean Low Water
 Station: 8452944, Connetquot Light, RI
 Status: Accepted (May 06 2020)
 Units: Feet
 Control Station: 8454000 Providence, RI

Datum	Value	Description
MHHW	4.41	Mean Higher-High Water
MHW	4.16	Mean High Water
MTL	2.08	Mean Tide Level
MSL	1.93	Mean Sea Level
DTL	2.12	Mean Diurnal Tide Level
MLW	0.00	Mean Low Water
MLLW	-0.17	Mean Lower-Low Water
NAVD88		
STND	-18.71	Station Datum
GT	4.58	Great Diurnal Range
MN	4.17	Mean Range of Tide

NOAA TIDAL BENCHMARK DATA

Received
8/12/2025
 Coastal Resources
 Management Council

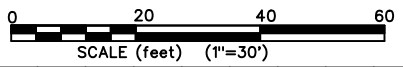


KENNETH W. ANDERSON

 REGISTERED
 PROFESSIONAL ENGINEER
 7/23/25

PLAT 25
LOT 199

EXISTING AS-BUILT CONDITIONS
 PER ASSENT A*2012-02-074



KWA
 drawn by

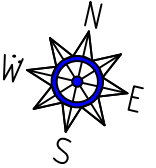
date 5/30/25
 REV.1 7/23/25

GUERTIN FLOAT MODIFICATION A*2012-02-074

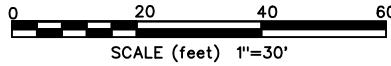
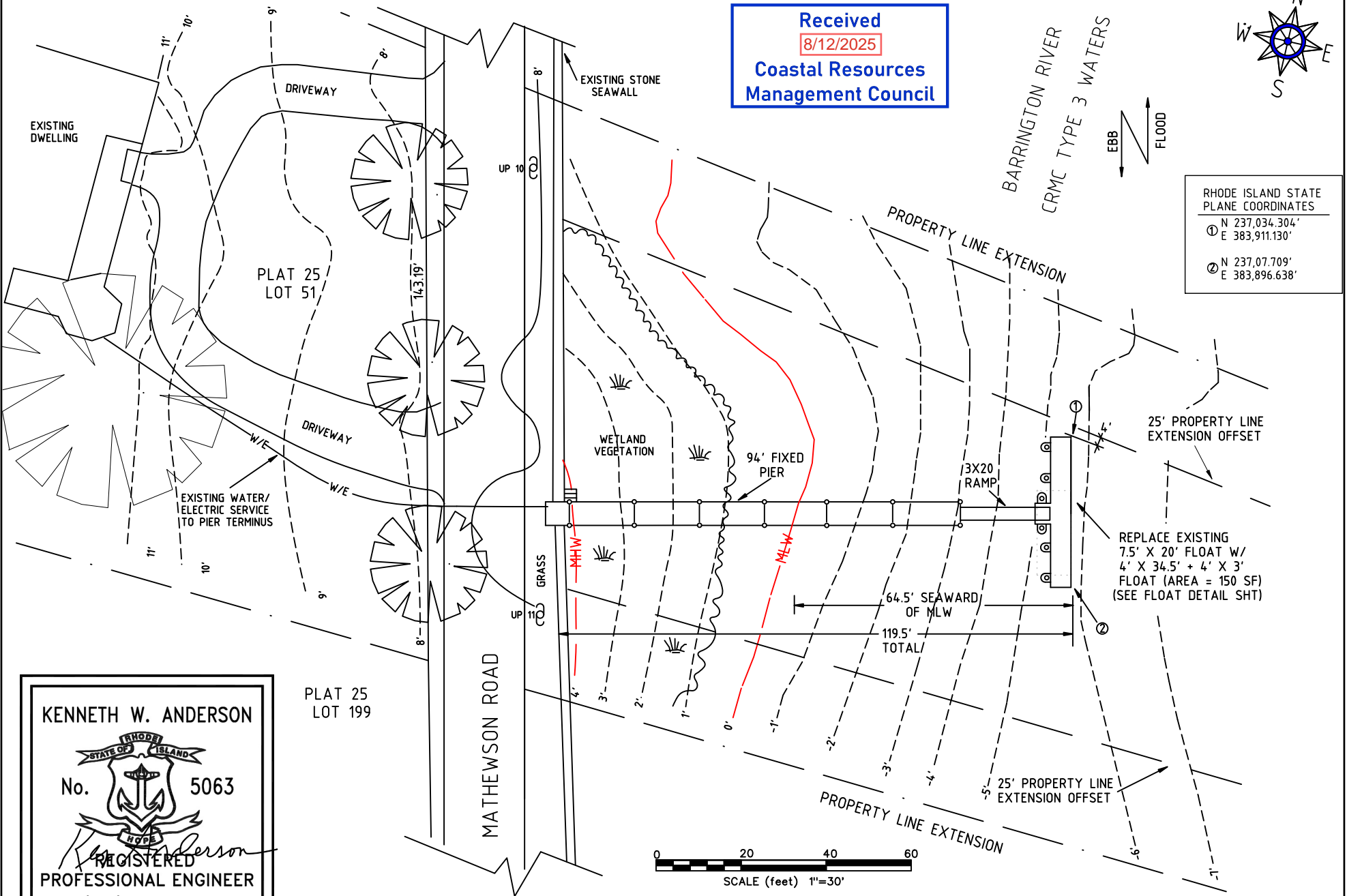
1
 rev sheet

3 OF 6
 NOTED
 scale

Received
 8/12/2025
 Coastal Resources
 Management Council



RHODE ISLAND STATE
 PLANE COORDINATES
 ① N 237,034.304'
 E 383,911.130'
 ② N 237,07.709'
 E 383,896.638'



KENNETH W. ANDERSON
 No. 5063
 REGISTERED PROFESSIONAL ENGINEER
 7/23/25

PROPOSED FLOAT MODIFICATION

JUN 25 2025

COASTAL RESOURCES
MANAGEMENT COUNCIL



EXPLODED VIEW TO
SHOW HINGE DETAIL

RAMP TRANSITION
PLATE NOT SHOWN

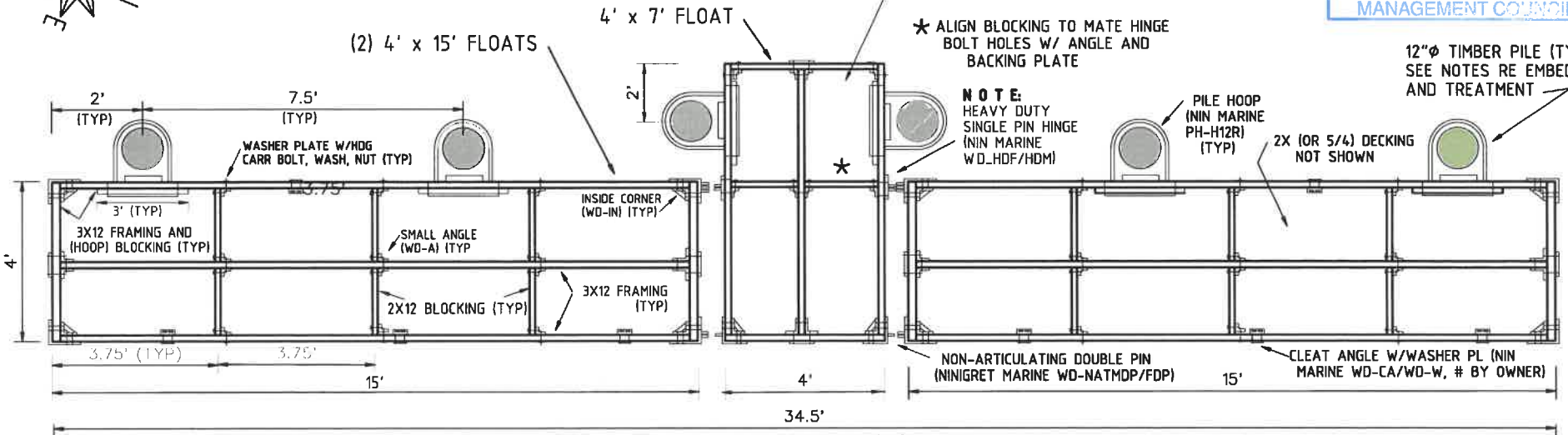
* ALIGN BLOCKING TO MATE HINGE
BOLT HOLES W/ ANGLE AND
BACKING PLATE

12"Ø TIMBER PILE (TYP)
SEE NOTES RE EMBED
AND TREATMENT

NOTE:
HEAVY DUTY
SINGLE PIN HINGE
(NIN MARINE
WD-H12R)
W.D.HDF/HDM)

PILE HOOP
(NIN MARINE
PH-H12R)
(TYP)

2X (OR 5/4) DECKING
NOT SHOWN



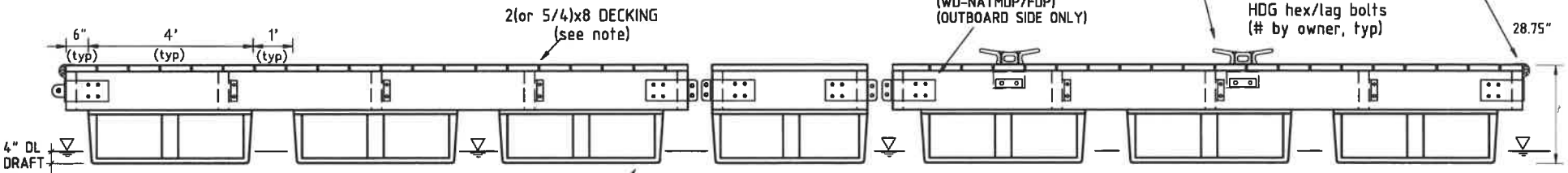
FRAMING/HARDWARE PLAN

TOP OF PILE
+15' MLW
(TYP)
FEMA ZONE
AE (EL13)

12"Ø SYP
CLASS "B"
TIMBER
PILE (TYP)

10" HDG cleat
(C-10) w/cleat
angle (WD-CA)
and washer plate
(WD-W) w/5/8"
HDG hex/lag bolts
(# by owner, typ)

dock bumper
(DB5001/5002)
corners (BPC10)
Fasten with ss
screws every 6"



PROFILE LOOKING WEST

10' MIN PILE EMBED (typ).
(If refusal/ledge
encountered <10' embed,
auger ledge (pile Ø +3"),
set pile, fill annular void
with 1" clean washed stone

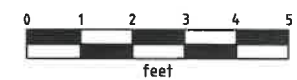
MUDLINE

MUDLINE -10' (ALL)

all framing 3x12 ,
all blocking 2x12 (u.n.o)
(MCA treated to 0.31 pcf min)
(Koppers MicroPro
Use Category UC4B)

2x8 decking MCA
treated to 0.31 pcf.
Fasten deck to frame w/(2)
#10x3 1/2" SS screws ea
frame member

ALL HARDWARE SPECIFIED
AVAILABLE FROM www.ninigretmarine.com
(401-364-0200) (OR EQV WITH APPROVAL OF EOR)



KENNETH W ANDERSON

No. 5063
REGISTERED
PROFESSIONAL ENGINEER
5/30/25

PERMAFLOAT 4'x4'x16"
polyethylene encased EPS foam
(F4848-16) (www.ninigretmarine.com)
Qty 7. Wt=67#, Bouyancy=1220#
One (1) 2'x4'x16" Permafloat (F2448-16).
Attach to frame w/1/2"x5" ss/HDG
hex lag bolt w/1/2"x1-1/2" ss/HDG washer

KWA
drawn by

5/30/25
date

GUERTIN FLOAT MODIFICATION

rev sheet

5 OF 6

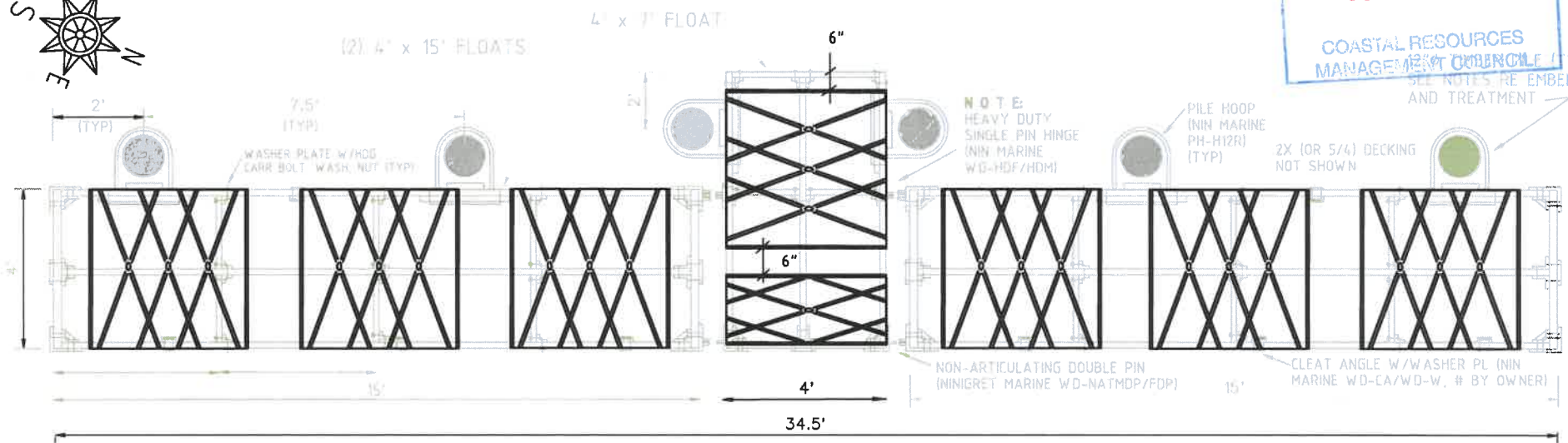
NOTED
scale

RECEIVED

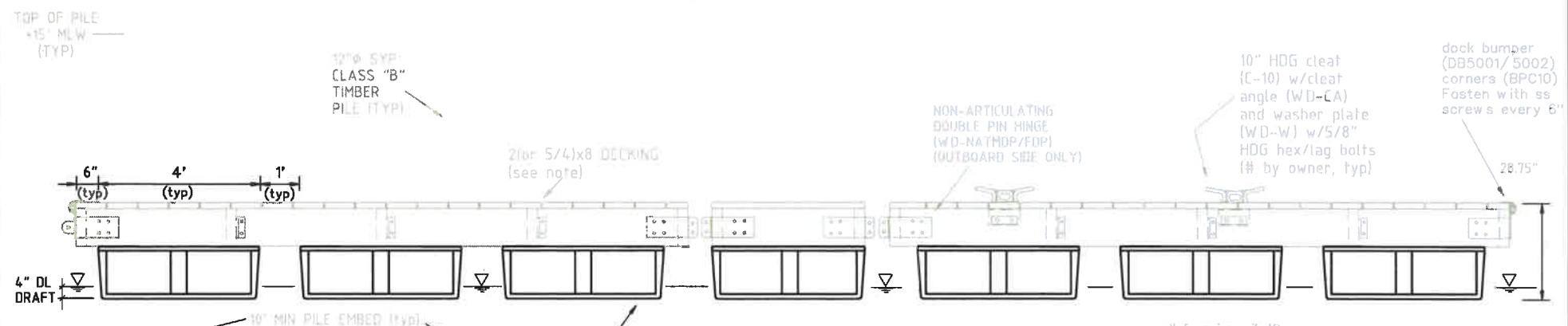
JUN 25 2025

COASTAL RESOURCES
MANAGEMENT COUNCIL (TYP)

SEE NOTES RE EMBED
AND TREATMENT



PERMAFLOAT LAYOUT PLAN



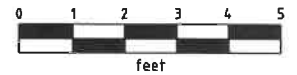
PROFILE LOOKING WEST

KENNETH W ANDERSON

 No. 5063
 REGISTERED PROFESSIONAL ENGINEER
 5/30/25

PERMAFLOAT 4'x4'x16"
 polyethylene encased EPS foam
 (F4848-16) Qty 7. Wt=67#, Bouyancy=1220#
 One (1) 2'x4'x16" Permafloat (F2448-16)
 Wt=37#, Bouyancy =598#.
 Attach to frame w/1/2"x5" ss/HDG
 hex lag screw w/1/2"x1-1/2" ss/HDG washer
 (www.ninigretmarine.com)

ALL HARDWARE SPECIFIED
 AVAILABLE FROM www.ninigretmarine.com
 (401-364-0200) OR EQV WITH APPROVAL OF EDR



KWA
 drawn by

5/30/25
 date

GUERTIN FLOAT MODIFICATION

rev sheet

6 OF 6

NOTED
 scale