



State of Rhode Island
Coastal Resources Management Council
Oliver H. Stedman Government Center
4808 Tower Hill Road, Suite 3
Wakefield, RI 02879-1900

(401) 783-3370
Fax (401) 783-2069

PUBLIC NOTICE

File Number: 2026-05-062 Date: May 14, 2026

This office has under consideration the application of:

Matthew Behan of
Behan Family Farms LLC
Ashaway, RI 02804

for a State of Rhode Island Assent to construct and maintain:

a 2.6-acre expansion of the existing 3.1-acre lease (CRMC#2014-08-013) using similar submerged bottom cages for the cultivation of eastern oysters. Please see plans attached to this notice for more information.

Project Location:	Ninigret Pond
City/Town:	Charlestown
Related files#	2025-05-13D, 2014-08-013B

Plans of the proposed work can be seen attached to this notice or requested at Cstaff1@crmc.ri.gov.

In accordance with the Administrative Procedures Act (Chapter 42-35 of the Rhode Island General Laws) you may request a hearing on this matter.

You are advised that if you have good reason to enter protests against the proposed work it is your privilege to do so. It is expected that objectors will review the application and plans thoroughly, visit site of proposed work if necessary, to familiarize themselves with the conditions and cite what law or laws, if any, would in their opinion be violated by the work proposed.

If you desire to protest, you must attend the scheduled hearing and give sworn testimony. A notice of the time and place of such hearing will be furnished you as soon as possible after receipt of your request for hearing. If you desire to request a hearing, to receive consideration, it should be in writing (**with your correct mailing address, e-mail address and valid contact number**) and be received at this office on or before June 13, 2026.

Please email your comments/hearing requests to: cstaff1@crmc.ri.gov; or mail via USPS to: Coastal Resources Management Council; O. S. Government Center, 4808 Tower Hill Road, Rm 116; Wakefield, RI 02879.

/lat

Rhode Island Coastal Resources Management Council
4808 Tower Hill Road
Wakefield, RI 02879

May 7, 2026

Dear Members of the Council,

Please accept this letter as an introduction and overview of the proposed aquaculture lease expansion application submitted by Behan Family Farms in Ninigret Pond, Charlestown, Rhode Island.

My name is Matthew J. Behan, owner and operator of Behan Family Farms and Ninigret Nectars, a Rhode Island shellfish farm established in 2011. Our farm cultivates oysters using environmentally responsible aquaculture practices designed to support sustainable seafood production while contributing positively to the local coastal ecosystem.

This application seeks approval for the expansion of our existing aquaculture operation through the addition of approximately 2.6 acres adjacent to our current lease area in Ninigret Pond. The existing lease footprint is currently being fully utilized for oyster production, and the proposed expansion is necessary to support continued operational growth, improve production efficiency, maintain responsible stocking densities, and meet increasing market demand.

The proposed expansion area will utilize subtidal bottom cages for oyster grow-out. No floating gear will be utilized as part of this operation. All gear will remain properly marked, maintained, and operated in accordance with CRMC regulations and navigational considerations. The proposed layout was designed carefully to maintain water access and minimize potential conflicts with neighboring users of the pond.

As a local owner-operated farm, our goal is to continue producing high-quality Rhode Island oysters while supporting the working waterfront, local employment, and the continued growth of Rhode Island's aquaculture industry. Oyster farming also provides environmental benefits through natural filtration and habitat creation within the coastal pond system.

This application includes updated site maps, operational details, gear descriptions, and supporting materials requested by CRMC staff. We appreciate the Council's time and consideration in reviewing this proposal and remain committed to operating responsibly and cooperatively within Ninigret Pond.

Please feel free to contact me with any questions or requests for additional information.

Sincerely,

Matthew J. Behan
Behan Family Farms / Ninigret Nectars



Guidance Document for Aquaculture Operations Plans

2.6 acre lease

1. Behan Family Farms, LLC
Matt Behan, Owner & Operator

[REDACTED]
Ashaway, RI 02804
[REDACTED]

2. CRMC File number

PD# 2025-05-013

File #2026-05-026

3. DEM Aquaculture License number RI 489 SS AQ

4. Type of Facility: commercial lease site in bottom gear cages

5. Lease Location Ninigret Pond, Charlestown, RI

The proposed lease site is in Ninigret Pond, in the Town of Charlestown, Rhode Island, directly adjacent to our existing aquaculture operation.

A. Adjacent town: Charlestown, RI

B. Water Body: Ninigret Pond

C. Approximate Coordinates (based on the site map):

Corner 1: 41°21'13.76", -71°39'52.88"

Corner 2: 41°21'11.58", -71°39'52.18"

Corner 3: 41°21'12.45" N, -71°39'46.15" W

Corner 4: 41°21'14.43" N, -71°39'44.72" W

Size of Lease Area

2.60 acre

6. Species to be Cultivated

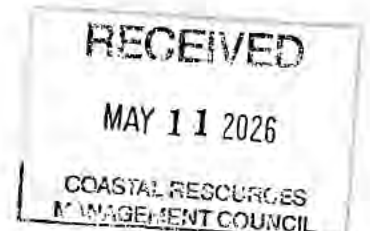
Eastern Oyster (*Crassostrea virginica*)

We will follow Biosecurity Board seed protocols when purchasing seed.

7. Descriptions of types of structures, gear and methods

The proposed aquaculture operation will utilize bottom cages containing oyster bags. A total of approximately 500 cages will be arranged in evenly spaced rows within the lease area. The layout will consist of five rows with the following approximate distribution: Row 1 – 130 cages, Row 2 – 120 cages, Row 3 – 100 cages, Row 4 – 100 cages, and Row 5 – 50 cages.

All gear will be placed directly on the seafloor, and no floating gear or surface structures will be used. This gear type minimizes visual impact and supports safe navigation. Each cage measures approximately 3 feet wide by 5 feet long by 1 foot high.



Guidance Document for Aquaculture Operations Plans

2.6 acre lease

8. Describe a plan for how the site will be built out, accessed and maintained

Oyster seed will be transferred into cages and deployed via vessel. Cages will be monitored and maintained regularly to remove fouling and ensure gear integrity. Harvesting will be done by lifting cages with hand tools or a davit-assisted system from our work skiff. Corners marked with pink lobster buoys. Gear maintenance will be done when we air dry cages on farm once every other week.

9. Description of the methods and equipment used to identify and mark site

12" Lobster Pot Buoy with cinder block weights

10. DEM Shellfish Harvesting Classification at site

Approved Area

11. Description of practices and procedures used during growth, harvest, storage, transportation, and sale of the cultured species.

Oysters are held in bottom cages and held in bags. Harvest and storage are completed by crew members for market size pieces. All oysters are stored in water on our commercial leases until day of harvest. On day of harvest preselected cages are passed up onto the boat out of the water and counted into 100 count bags. During vibrio season the bags are put in an ice water slurry to chill them down to under 40 degrees (internal temperature). The bags are then loaded into coolers where they are tagged and iced down for transport across the pond. At the dock we have a refrigerated van waiting that has already been chilled to below 45 ambient temperatures. The coolers are transferred up the dock and bags are loaded as quickly and efficiently as possible into the van. Time and temperature logs are taken along with writing out invoices before starting deliveries.

Oysters are sold twice weekly to local and regional seafood wholesalers, restaurants, and direct-to-consumer buyers. Sales include delivery within Rhode Island and overnight shipping to out-of-state clients to preserve freshness and quality.

12. 12(a). Description of the mitigation or deterrent measures that will be used to minimize the potential pollution impact of birds and/or mammals.

Not applicable. The proposed operation does not utilize floating gear. Oyster cultivation will occur using subtidal bottom cages.

12(b). Description of a plan for re-submergence after air drying before harvest.

Not applicable. The proposed operation does not utilize floating gear requiring air drying or re-submergence prior to harvest. Oyster cultivation will occur using subtidal bottom cages in Ninigret Pond.



Guidance Document for Aquaculture Operations Plans

2.6 acre lease

13. Indicate projected pre unit area yield

As a fully established, full-scale farm with over 15 years of experience, we operate at high efficiency and productivity. Utilizing 500 cages and harvesting an average of 750 market-ready oysters per cage, we project a total yield of approximately 350,000 oysters per cycle.

14. Plan for safety and security of equipment

To safeguard equipment, cages are maintained under an average of at very least 1ft of water, providing natural protection against ice and storm events. This water depth minimizes exposure and reduces the risk of damage. In the event of severe weather, gear can be temporarily relocated to deeper water within the lease area to ensure additional protection. Oyster equipment can be removed from boats and stored on land. Boats can be hauled out during bad storms.

Each of the 4 corners of the lease is marked with a 12in lobster pot buoy that contains our CRMC assent number in 3in bold. This shows boaters where gear is located. We also have signage warning the public of submerged aquaculture gear area.

15. Procedures for maintaining records:

Behan Family Farms maintains detailed daily records tracking all seed inventory on the farm. Seed is systematically organized by size class, source, and planting date, with each group maintained in designated cages and grow-out areas. This structured approach prevents cross-contamination and ensures full traceability throughout the grow-out cycle. All seed is purchased from reputable hatcheries that provide required pathology reports and certifications authorizing use within Rhode Island's approved biosecurity area.

15(a)(i). Description of notification, disease certification, and labeling/tagging procedures:

For all out-of-state seed purchases, Behan Family Farms maintains copies of all required disease certifications, invoices, transfer documentation, and hatchery records. Seed shipments are labeled and tracked by source hatchery, planting date, and size class upon arrival. Records are maintained on-site and are available for review by regulatory agencies upon request.

16(a)(i). Description of procedures, including frequency of grading (with particular reference to requirements that seed must be removed before it exceeds maximum "seed" size threshold, i.e., <32 mm for oysters, <20 mm for quahogs):

Any upwellers utilized by Behan Family Farms operate within the same approved biosecurity zone. Seed is routinely monitored and graded to ensure oysters are transferred from upwellers before exceeding the 32 mm seed size threshold required by regulation.

17(a)(i). Detailed description of demarcation methods and record-keeping practices used at the lease site to ensure that animals have been cultured at least six (6) months in approved waters prior to sale, including:

Behan Family Farms maintains detailed records tracking all seed inventory from planting through harvest. All seed is tagged, segregated, and tracked by source, planting date, and size

RECEIVED

MAY 11 2025

Guidance Document for Aquaculture Operations Plans

2.6 acre lease

class to ensure traceability throughout the grow-out cycle. Inventory records are maintained to verify oysters remain in approved waters for approximately 4–6 months prior to sale.

17(a)(i)(1). Detailed record-keeping practices specifying date, source, average size, and amount of seed:

Records are maintained for all seed purchases and plantings, including hatchery source, delivery date, average seed size, quantity received, and planting location within the lease area.

17(a)(i)(2). Protocols and associated record keeping for tracking product, e.g., use of tagged/numbered cages and/or bags, use of marked trawls, and/or use of marked, segregated portions of lease sites:

All seed and product are maintained in tagged, segregated, and tracked cages, bags, and grow-out areas throughout the production cycle to maintain organization and traceability.

17(b). Description of the process for notifying the third party that (a) seed came from prohibited waters, (b) the date of that transfer, and (c) the remaining time needed to maintain the animals in approved waters prior to sale:

Not applicable. Behan Family Farms does not sell seed to third parties as part of this operation.



Category B Tidal Aquaculture Form

Anyone conducting aquaculture operations in RI must comply with all applicable CRMC regulations (*Coastal Resources Management Program* §§ 1.3.1(A)(1) and 1.3.1(K)(3)(a)) and DEM regulations, as set forth in “*Aquaculture of Marine Species in RI Waters*.” Applications provided to the CRMC will be available for DEM review. Category B applications shall address each of the items listed below, as applicable, following the format set forth below.

1. Demonstrate the need for the proposed activity or alteration:

The proposed 2.6-acre expansion is necessary to support the continued growth and operational efficiency of Behan Family Farms. The existing lease footprint is currently operating at full production capacity, limiting our ability to increase production and meet growing market demand. Additional grow-out space will improve inventory rotation, reduce cage density, and support more effective biofouling management, contributing to oyster health, product quality, and long-term farm sustainability.

2. Demonstrate that all applicable local zoning ordinances, building codes, flood hazard standards, and all safety codes, fire codes, and environmental requirements have or will be met; local approvals are required for activities as specifically prescribed for nontidal portions of a project in Sections 1.3.1(B), 1.3.1(C), 1.3.1(F), 1.3.1(H), 1.3.1(I), 1.3.1(K), 1.3.1(M), 1.3.1(O) and 1.3.1(Q) of this part; for projects on state land, the state building official, for the purposes of this section, is the building official.

All applicable local, state, and federal regulations will be met for this project. The proposed aquaculture activity is located in tidal waters and does not involve upland or nontidal construction, but we will comply with any relevant zoning ordinances, building codes, and environmental requirements as needed. Should any portion of the project trigger review under Sections 1.3.1(B)–(Q), we will obtain all necessary local approvals and coordinate with the appropriate local or state building official. We are committed to ensuring full compliance with safety codes, flood hazard standards, fire codes, and environmental protections throughout the course of this project.



3. Describe the boundaries of the coastal waters and land area that is anticipated to be affected.

The area anticipated to be affected includes approximately 2.6 acres of coastal waters within Ninigret Pond, adjacent to our existing lease. The site is fully subtidal, with no impact to upland or shoreline areas. Boundaries are defined by GPS coordinates and will be marked with visible corner buoys. The layout includes multiple navigation buffers, and access to nearby recreational areas—including a small sandbar frequently used by the public—is fully maintained.

4. Demonstrate that the alteration or activity will not result in significant impacts on erosion and/or deposition processes along the shore and in tidal waters:

The proposed activity involves the placement of bottom cages within a defined 2.6-acre subtidal area and will not involve any dredging, shoreline alteration, or upland construction. The gear is low-profile and does not obstruct natural water flow or tidal exchange. Based on the location and gear type, the activity is not expected to cause any significant changes to erosion or deposition processes along the shore or in tidal waters. The sandy and muddy bottom of Ninigret Pond is well-suited for aquaculture, and similar operations in the area have demonstrated minimal to no impact on sediment transport or shoreline stability.

5. Demonstrate that the alteration or activity will not result in significant impacts on the abundance and diversity of plant and animal life:

The proposed aquaculture activity will not result in significant impacts on the abundance or diversity of plant and animal life. The gear used—open-bottom cages placed on the seafloor—has minimal contact with the substrate and allows for continued water flow and light penetration. Studies have shown that shellfish aquaculture can provide habitat benefits by offering structure for small fish and invertebrates. The area is already used for shellfish farming, and this expansion will maintain appropriate spacing to avoid overcrowding or habitat disruption. No seagrass beds or sensitive habitats are present in the proposed lease area. Routine gear maintenance and careful handling further reduce ecological impact and help preserve the surrounding environment.

6. Demonstrate that the alteration will not unreasonably interfere with, impair, or significantly impact existing public access to, or use of, tidal waters and/or the shore:

The proposed aquaculture activity will not unreasonably interfere with public access to tidal waters or the shore. The lease is located in open water, uses low-profile bottom gear, and allows for continued navigation, fishing, and recreational use. Adequate spacing ensures compatibility with existing public uses and safe access.

7. Demonstrate that the alteration will not result in significant impacts to water circulation, flushing, turbidity, and sedimentation:

The proposed aquaculture activity will not result in significant impacts to water circulation, flushing, turbidity, or sedimentation. The gear used consists of open-top bottom cages that are low-profile and allow for natural water flow and tidal exchange. The site is located in a well-flushed area of Ninigret Pond with consistent tidal movement, which supports proper circulation and prevents buildup of sediments. Cages are spaced to maintain flow between rows, minimizing any disruption to hydrodynamics. Regular gear maintenance also helps prevent fouling that could otherwise affect water movement. No dredging or bottom disturbance is involved in the installation or operation of this gear.



8. Demonstrate that there will be no significant deterioration in the quality of the water in the immediate vicinity as defined by DEM:

The proposed aquaculture activity will not cause significant deterioration in water quality in the immediate vicinity. Oysters are filter feeders that can improve water clarity and nutrient balance. The use of low-impact bottom gear and adherence to DEM water quality standards ensures protection of surrounding waters and ecological health.

9. Demonstrate that the alteration or activity will not result in significant impacts to areas of historic and archaeological significance:

The proposed aquaculture activity will not impact areas of historic or archaeological significance. The site is located in previously utilized coastal waters with no known cultural resources. Gear is non-invasive, placed on the bottom, and does not involve dredging or excavation, ensuring no disturbance to submerged historic or archaeological features.

10. Demonstrate that the alteration or activity will not result in significant conflicts with water dependent uses and activities such as recreational boating, fishing, swimming, navigation, and commerce:

The proposed activity will not result in significant conflicts with existing water-dependent uses such as recreational boating, fishing, swimming, navigation, or commerce. The lease area is located in shallow subtidal waters that are too shallow for recreational boating, but remain accessible for kayaking and small non-motorized vessels. Fishing and swimming can still take place around and even over the gear, as water flow and access are not obstructed. A nearby small sandbar, which is occasionally used by the public for recreation, will remain fully accessible and is not encroached upon by the proposed layout. Additionally, CRMC will conduct a clam transect to assess shellfish habitat impacts, ensuring the proposed activity does not interfere with existing or potential wild harvest areas.

11. Demonstrate that measures have been taken to minimize any adverse scenic impact:

Measures have been taken to minimize any adverse scenic impact associated with the proposed activity. The gear selected—low-profile, open-top bottom cages—was specifically chosen for its minimal visual footprint and the least possible user conflict. All gear will remain fully submerged under at least one foot of water during normal operation. On occasion, approximately once every few weeks, gear may be temporarily propped up for a day for maintenance purposes. The site is located more than 1,000 feet from any residential properties and directly abuts the Ninigret Conservation Area, which helps limit visibility from shore. Based on our long-standing experience operating in this area, it is infrequently used by the public and contains very low natural shellfish concentrations. These factors further reduce the potential for scenic or user impact.



Additional Category B Requirements:

1. Describe the location and size of the area proposed:

The proposed aquaculture site is located within the approved lease area in Ninigret Pond, Charlestown, Rhode Island. The total area is approximately 2.6 acres. The site is situated in a manner that supports safe navigation and minimizes conflicts with other users, including recreational boating and fishing. All gear will be placed within designated boundaries and arranged in evenly spaced rows to ensure efficient use of space and maintain a low visual and environmental impact.

2. Identify the species to be managed or cultivated within the permitted area and over which the applicant shall have exclusive right:

The species to be managed and cultivated within the permitted area is the Eastern oyster (*Crassostrea virginica*). The applicant shall have exclusive rights to grow, manage, and harvest this species within the defined lease boundaries in accordance with CRMC and RIDEM regulations.

3. Describe the method or manner of management or cultivation to be utilized, including whether the activities proposed are experimental, commercial, or for personal use:

The proposed activity is commercial in nature and will utilize bottom cages placed directly on the seafloor. The site will primarily be used for holding and grow-out of oysters, including seasonal use for overwintering product.

Oysters will be maintained in cages and handled using standard aquaculture practices including routine maintenance, fouling control, and harvesting via vessel-based operations. No experimental methods are proposed, and all activities will follow established industry and regulatory standards.

4. Provide such other information as may be necessary for the Council to determine

- a. The compatibility of the proposal with other existing and potential uses of the area and areas contiguous to it, including navigation, recreation, and fisheries:

The proposed 2.6-acre expansion is located adjacent to our existing lease in Ninigret Pond, where we have operated successfully for many years without conflict. The gear layout is designed with appropriate spacing and buffer areas to maintain navigation and avoid interference with recreational use.

While the area is generally too shallow for most motorized boating, it remains accessible for low-impact activities such as kayaking, fishing, and swimming. A nearby sandbar will remain unaffected by the proposed operation.

- b. *In addition, please provide the following necessary information as required in the 1000' Contiguous Area Map:*

- o *list of all property owners within 1000':*

The proposed aquaculture expansion is situated entirely within Ninigret Pond, adjacent to our existing lease area. The surrounding area consists primarily of public lands, including the Ninigret National Wildlife Refuge and the Ninigret Conservation Area, which are managed by federal and state agencies.

MAY 11 2026

FOR OFFICIAL USE ONLY

- *list of all approved aquaculture leases within 1000':*

The proposed lease is directly adjacent to existing aquaculture operations. Leases to the north and west are currently owned and operated by Behan Family Farms. An additional neighboring lease to the east is operated by Paul Gordon Collins (East Beach Blondes).

- *list of CRMC designated ROW(s) within 1000':*

There are no CRMC-designated rights-of-way within 1000 feet of the proposed lease area.

- *CRMC water use types within 1000':*

Surrounding waters within 1000 feet of the proposed project area include CRMC Type 1 Conservation Waters and designated uses associated with aquaculture, recreation, and fisheries. The proposed operation is consistent with these existing water use classifications and will not interfere with surrounding uses.

- *any shoreline(s) within 1000' which have been preserved for conservation, recreation and/or public access through easements, purchased by the state or municipality, or are owned by a land trust or state-recognized conservation organization:*

Shorelines within 1000 feet of the proposed lease include publicly conserved lands such as the Ninigret National Wildlife Refuge and the Ninigret Conservation Area. These areas are preserved for conservation, recreation, and public access. This aquaculture operation will not impact access to these shorelines.

- c. The degree of exclusivity required for aquacultural activities on the proposed site. *(In support of this requirement and in accordance with 1.3.1(K)(b), the applicant must include a plan demonstrating reasonable public ingress and egress to and from the proposed site for traditional water activities such as boating, swimming, and fishing. The ingress/egress plan may be notated on a copy of the site plan or other map.*

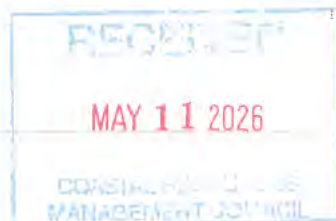
The proposed lease area will allow for reasonable public ingress and egress for traditional water uses such as boating, fishing, and swimming. All aquaculture gear will be fully submerged and arranged in organized rows, allowing for navigation around and near the site. The lease boundaries will be clearly marked in accordance with CRMC requirements to ensure visibility. The site layout maintains open water corridors and does not obstruct access to adjacent areas.

(Note: Ingress/egress pathways are illustrated on the site plan.)



The ingress/egress plan may be notated on a copy of the site plan or other map. You can insert that image here:

Appendix C
pg. 4



- d. The safety and security of equipment, including appropriate marking of the equipment and/or lease area:

All aquaculture gear will be properly maintained and secured within the lease area. The site will be marked with standard buoys at each corner in accordance with CRMC requirements, clearly identifying the lease boundaries.

All gear is submerged, reducing navigational hazards. Equipment is regularly inspected and maintained to ensure structural integrity and safe operation. In severe weather conditions, gear may be adjusted or relocated within the lease to prevent damage.

- e. The projected per unit area yield of harvestable product:

The proposed lease is expected to produce approximately 350,000 oysters per harvest cycle.

- f. The cumulative impact of a particular aquaculture proposal in an area, in addition to other aquaculture operations already in place. *(At minimum, applicants should consider the impact of any other aquaculture operation within 1000' of the proposed site.):*

The cumulative impact of the proposed aquaculture lease includes its combined effects with nearby operations within 1,000 feet of the site. This area already supports established farms, and the addition of this lease is expected to integrate with existing use patterns. Gear type, spacing, and bottom culture methods minimize interference with navigation and surrounding uses while maintaining environmental compatibility and sustainable production practices.

- g. The capability of the applicant to carry out the proposed activities:

Behan Family Farms has over 15 years of experience in aquaculture operations within Ninigret Pond. The applicant has successfully managed existing leases, maintained regulatory compliance, and developed established markets for product distribution.

The applicant possesses the equipment, knowledge, and workforce necessary to carry out the proposed activities efficiently and responsibly.

- h. The impact of the proposed activities on the scenic qualities of the area:

The proposed operation will have minimal impact on the scenic qualities of the area. All aquaculture gear will be submerged below the water surface, reducing visual impact. Only perimeter buoys will be visible, consistent with existing aquaculture operations in the pond. The expansion is located adjacent to an existing lease and will not introduce new visual elements beyond those already present.

MAY 11 2026

RICRMP Written Requirements Response

Applicant: Behan Family Farms

Date: 5/7/2026

10. Guidance Document (Category B)

A complete, typewritten response to all items contained in the Category B Tidal Aquaculture Guidance Document has been prepared and submitted as part of this application. All responses are organized and numbered in accordance with the guidance document.

11. Review of RICRMP Sections 1.1.12 and 1.3.1(K)

The proposed aquaculture activities have been reviewed in accordance with Sections 1.1.12 and 1.3.1(K) of the Rhode Island Coastal Resources Management Program (RICRMP). The project has been designed to minimize user conflicts, maintain public access, and ensure compatibility with surrounding uses.

12. Pedestrian Access and Other Uses

The proposed lease area will not interfere with pedestrian access to the shoreline, as no shoreline structures are proposed.

The use of low-profile bottom cages ensures minimal impact on navigation and visibility. The lease area will remain available for compatible uses such as boating, fishing, and other recreational activities.

The project is designed to coexist with existing uses while maintaining safe navigation and public access in accordance with CRMC policies.

MAY 11 2026

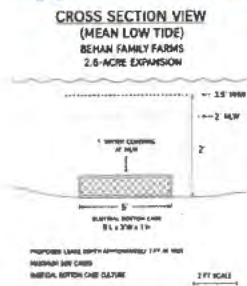
Appendix for Behan Family Farms 2.6-acre expansion Aquaculture Operations Plan Form

Appendix A – Location Map pg 2

This map shows the proposed 2.6-acre lease area in Ninigret Pond, marked with GPS coordinates and buffer zones.



Appendix B – Cross Section View pg 3



Appendix C – Ingress/Egress pg 4

BEHAN FAMILY FARMS 2.6-ACRE EXPANSION PROPOSED/CONSENT
All easements per it abstracted. Easement allows for easement public ingress and egress for traditional water use including
boating, fishing, and swimming.



- Appendix D – 1000ft Buffer pg 5
- Appendix E – Gear & Contour pg 6
- Appendix F – Gear Drawing pg 7
- Appendix G – Gear Layout pg 8



PROPOSED
AQUACULTURE LEASE
APPLICATION
BEHAN FAMILY FARM



-71° 39' 44.72"
41° 21' 14.43"

-71° 39' 46.15"
41° 21' 12.45"

-71° 39' 52.88"
41° 21' 13.76"

-71° 39' 52.18"
41° 21' 11.58"

228'

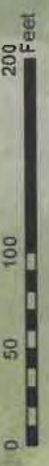
125'

625'

Behan Family Farm
Proposed Lease
2.6 ac

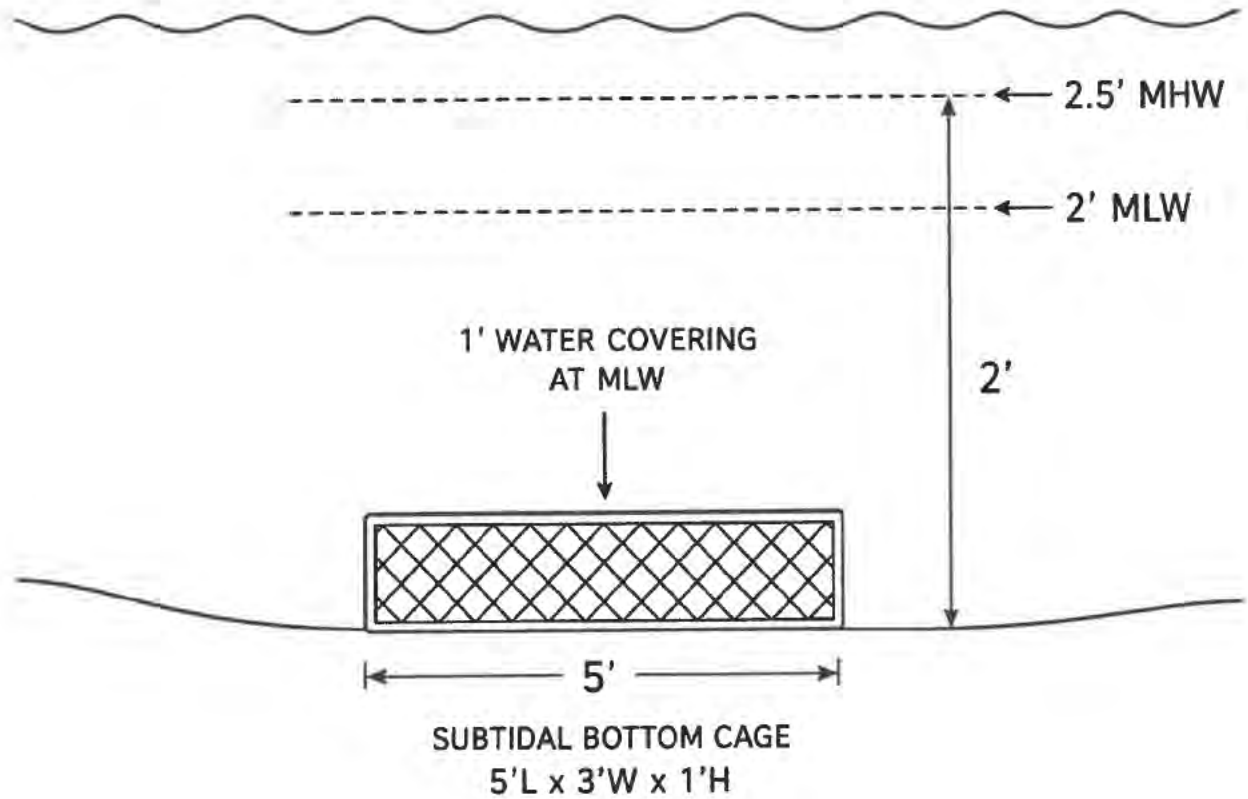
468'

227'



MAY 11 2026

CROSS SECTION VIEW (MEAN LOW TIDE) BEHAN FAMILY FARMS 2.6-ACRE EXPANSION



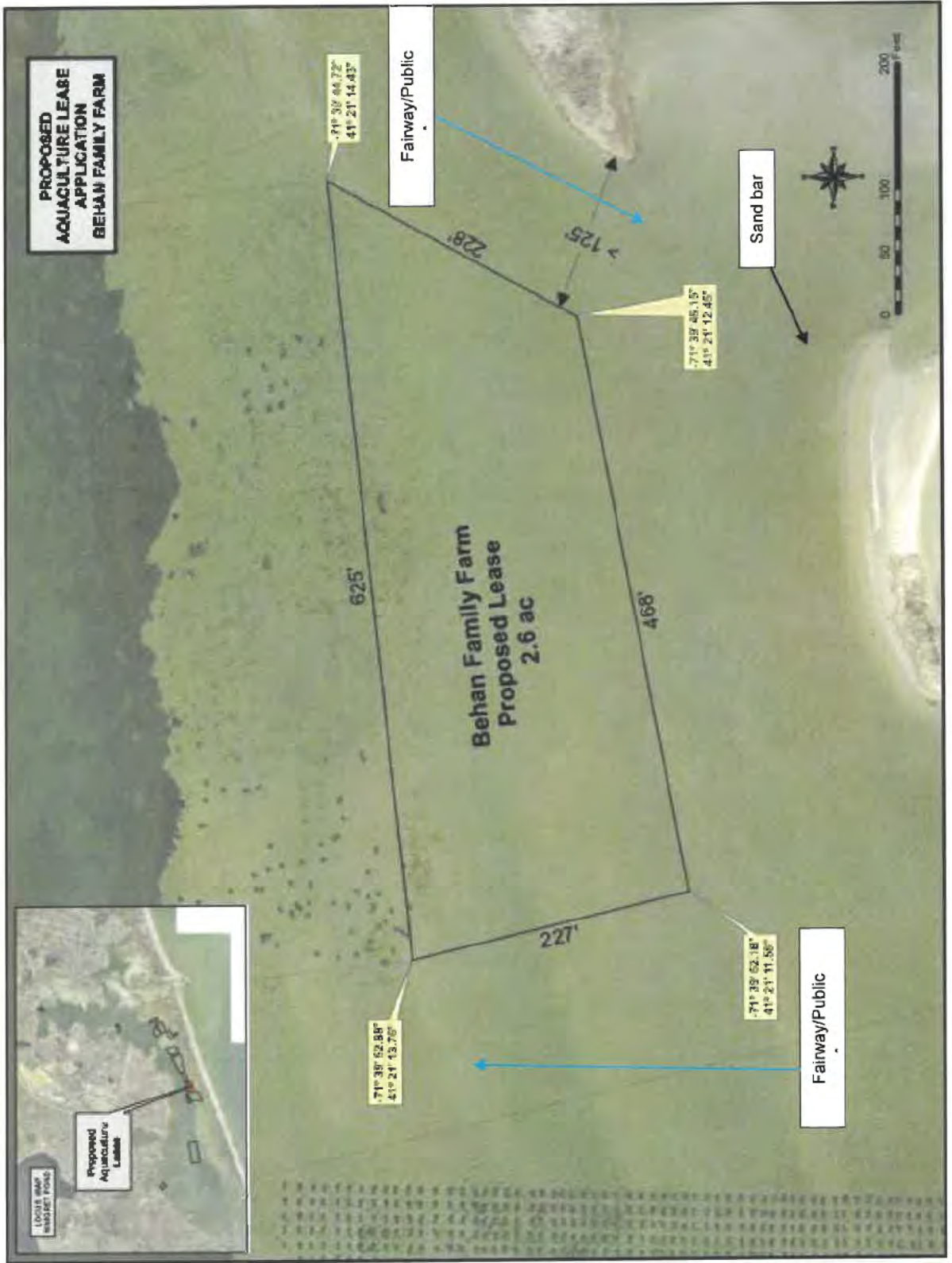
PROPOSED LEASE DEPTH APPROXIMATELY 2 FT AT MLW
MAXIMUM 500 CAGES
SUBTIDAL BOTTOM CAGE CULTURE

2 FT SCALE
|-----|



Appendix C
pg. 4

All aquaculture gear is submerged. Layout allows for continued public ingress and egress for traditional water uses including boating, fishing, and swimming.



RECEIVED
MAY 11 2026
DUNSMUIR SERVICES
MANAGEMENT COUNCIL

PROPOSED
AQUACULTURE LEASE
APPLICATION
BEHAN FAMILY FARM

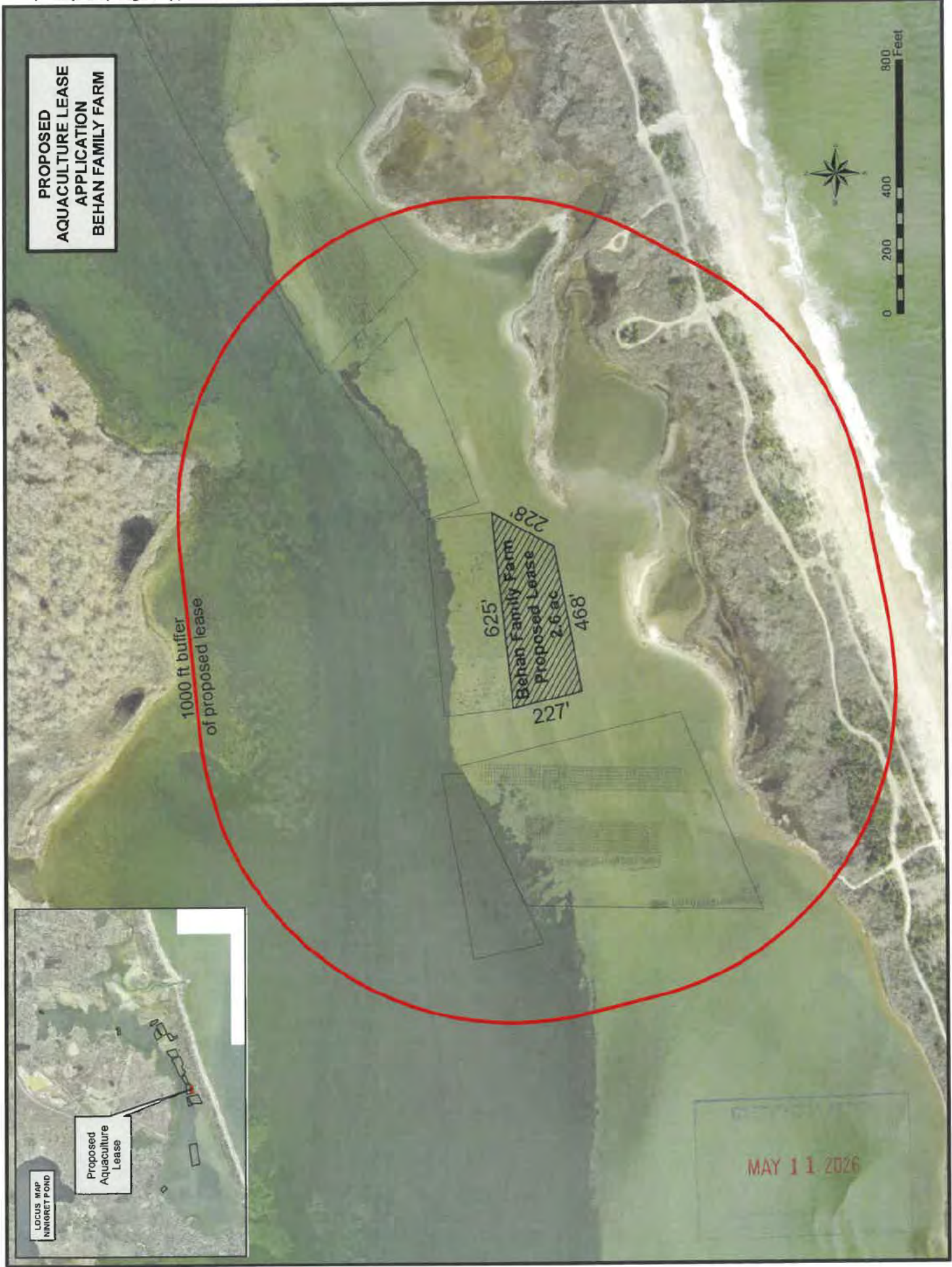


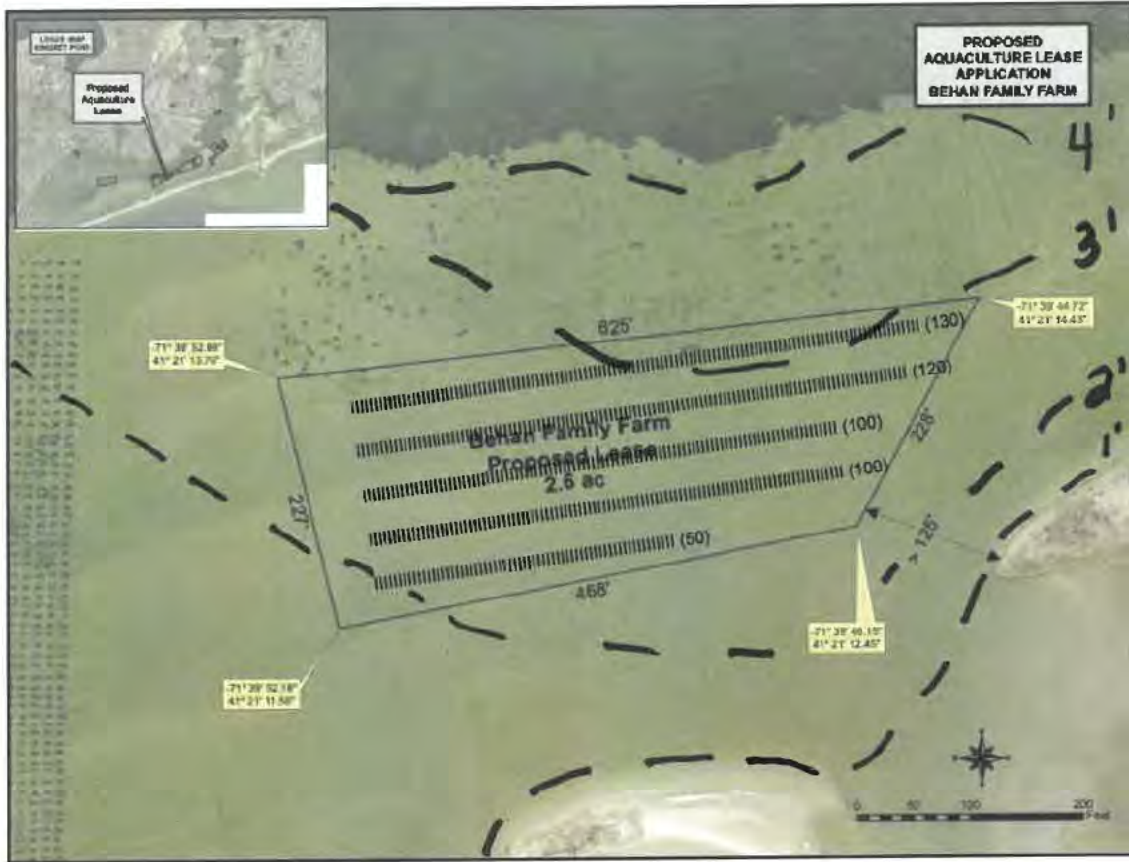
1000 ft buffer
of proposed lease

625'
Behan Family Farm
Proposed Lease
2.6 ac
468'
228'
227'



MAY 11 2026

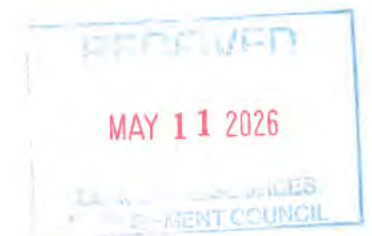




Each cage measures 67" x 41" x 11" (approx. 5.6ft x 3.4ft x .9ft) and is use for bottom culture. There are 500 cages, arranged in rows of 5 to total 500.

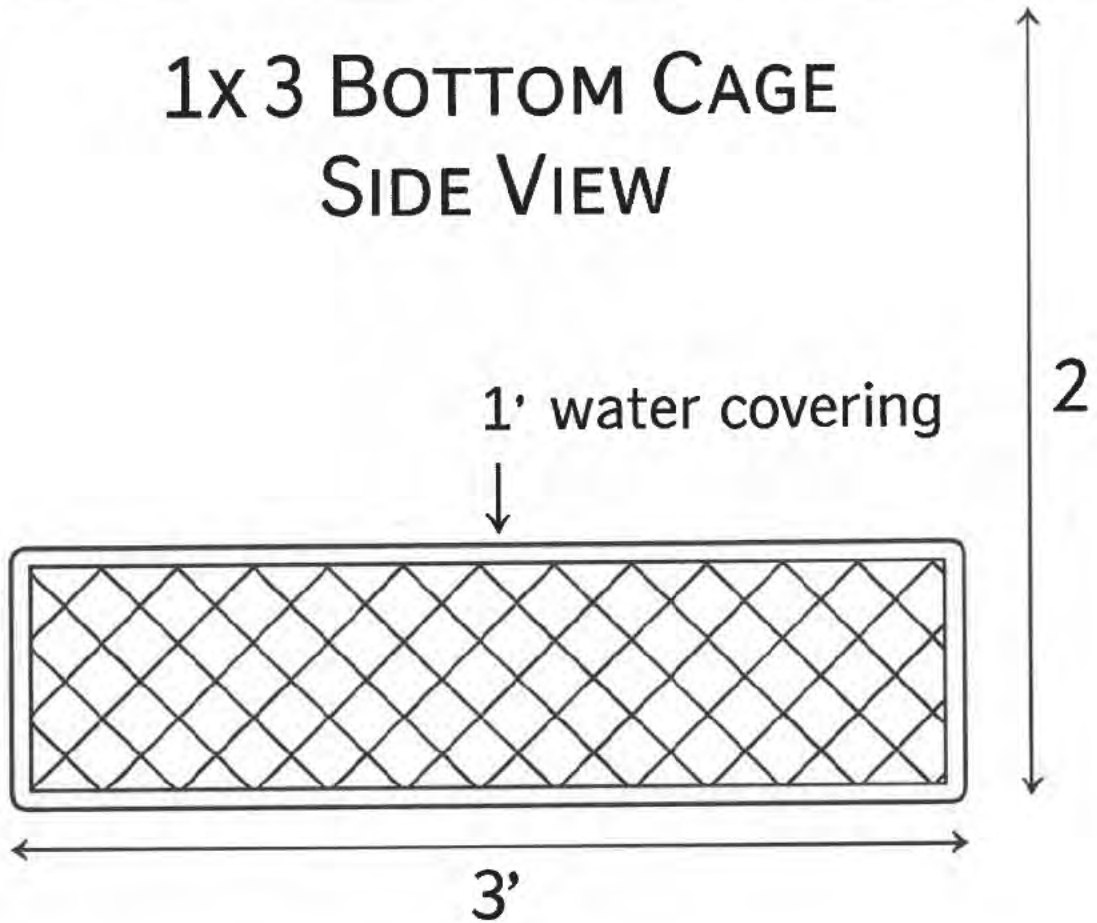
Row 1- 130 Row 2-120 Row 3-100 Row 4-100 ROW 5- 50

- Contour 1'
- Contour 2'
- Contour 3'
- Contour 4'



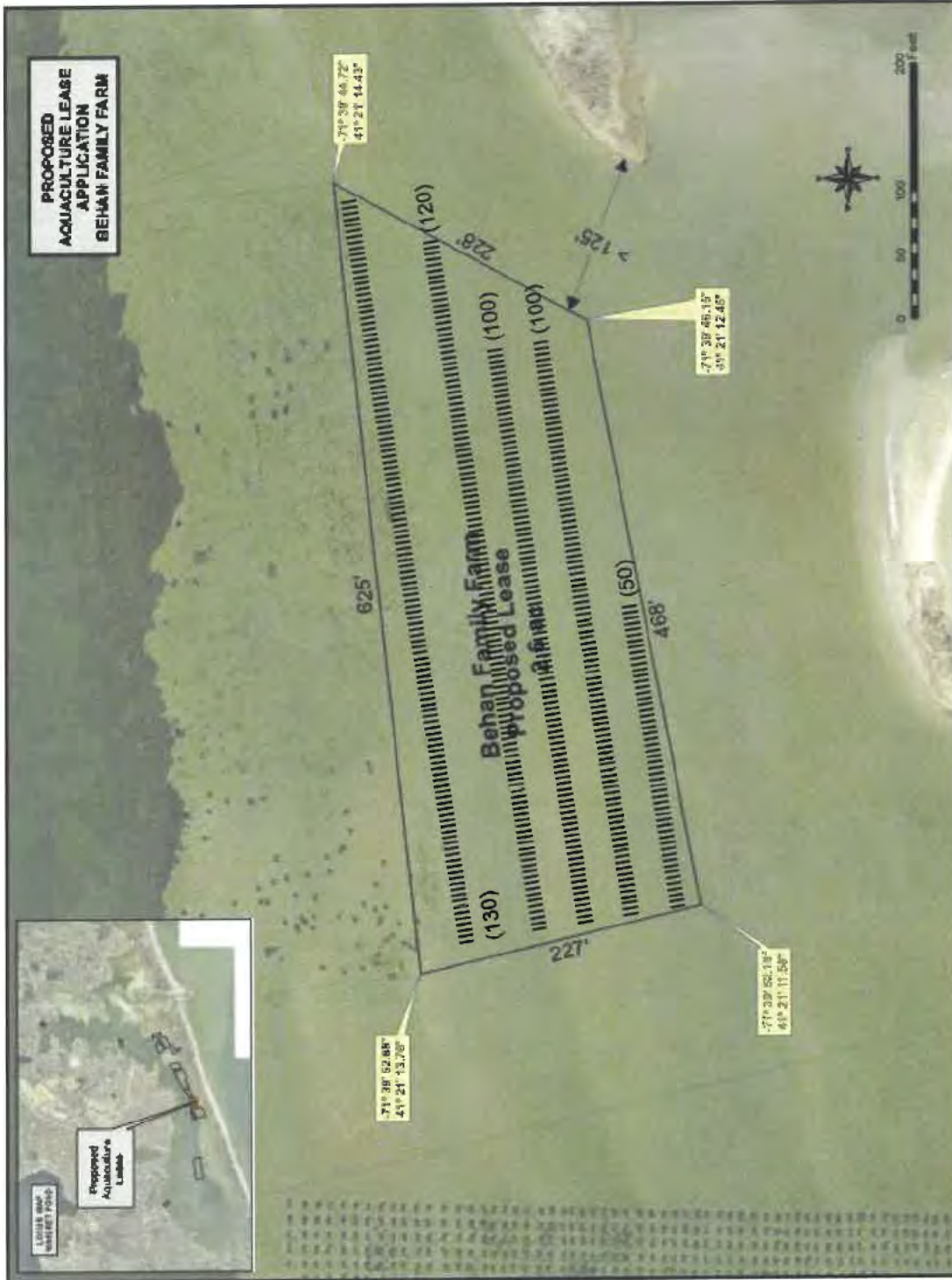
GEAR DRAWING (MEAN LOW TIDE)

1x3 BOTTOM CAGE SIDE VIEW



REMOVED
MAY 11 2026
WILSON COUNTY
MANAGEMENT COUNCIL

Behan Family Farms 2.6 acre expansion April 2026- Gear Layout



RECEIVED
MAY 11 2026
COASTAL RESOURCES
MANAGEMENT COUNCIL

WEST

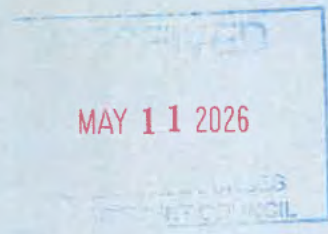
RECEIVED

MAY 11 2026

COASTAL RESOURCES
MANAGEMENT COUNCIL

east

MAY 11 2026



South

RECEIVED
MAY 11 2026
COMMUNITY RESOURCES
COUNCIL

north

RECEIVED
MAY 11 2026
HUMAN RESOURCES
MANAGEMENT COUNCIL