

Rhode Island Recreational Fishing Project

Prepared for March, 2024

Partners



Phase I: Examine Existing Data

- **The Rhode Island Marine Recreational Information Program Data: NOAA - MRIP Survey Directories**. Info about fishing sites including directions, maps, parking, marina details, fishing mode and conditions.
- **Rhode Island Sea Grant Shoreline Access: Shoreline RI**. Public right-of-ways and activities for each location.
- **Narragansett Bay Estuary Program Coastal Use Data: How Do We Use Our Coasts?** Breaks down data from 2.5 million visits to public coastal access sites in summer 2019.
- **Recreational Use of Coastal Access Sites in Narragansett Bay**: research on how people use our coasts.
- **Artisanal Fishers and Local Food Security in Rhode Island**: Research that explores and documents the important roles that artisanal fishers have.

Phase II: Survey

**Over 300 surveys collected,
2500+ fishing locations**



Phase II: Survey

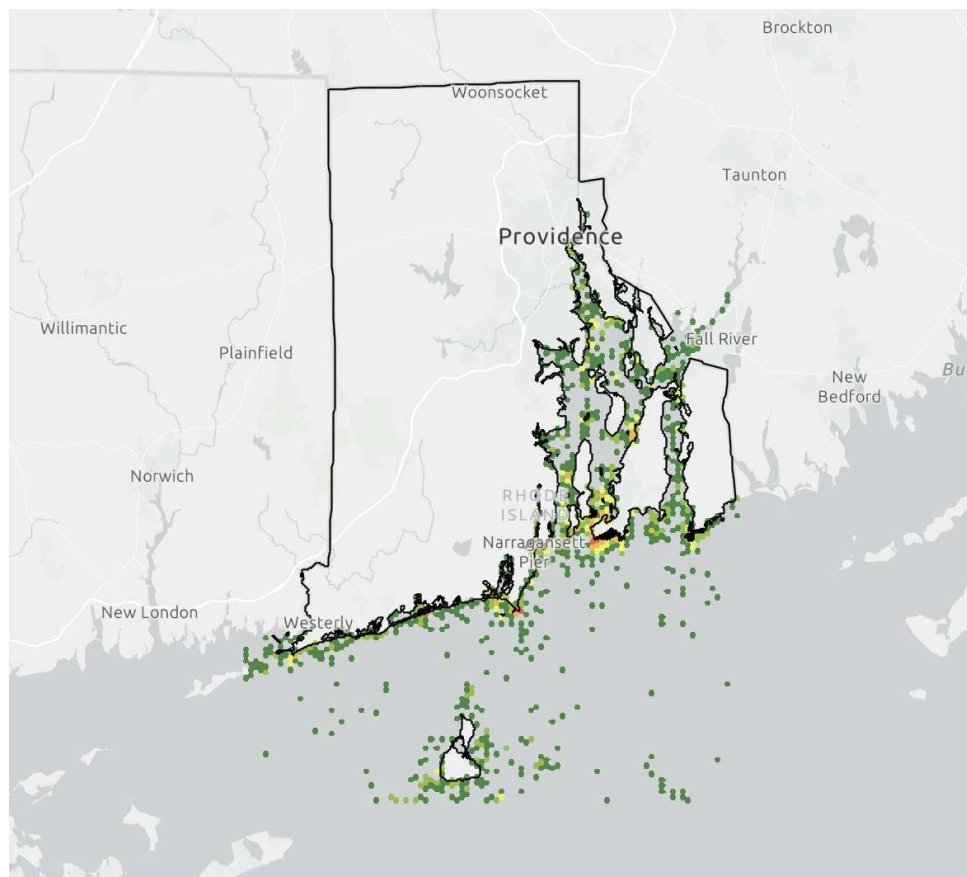


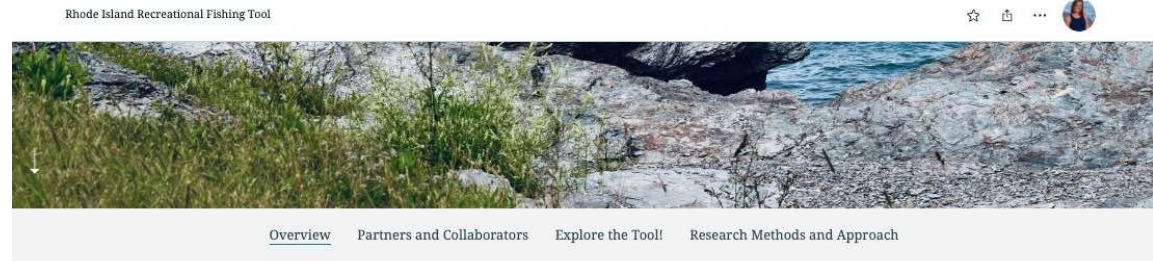
Image: A screenshot of the aggregate survey results that map priority fishing sites across Rhode Island state waters.

Phase II: Survey

Key Findings from the Survey:

- **Major Hot Spots:**
 - Fort Adams and Brenton Point State Parks, Newport,
 - Point Judith and the Narragansett Pier, Narragansett, and
 - the Charlestown Breachway.
- **98% of fishers use a rod and reel to fish**
- **Targeted Species:** 1) Striped Bass, 2) Black Sea Bass, and 3) Bluefish.
- **97% fish in the summer**, 78% fish in the spring, 77% fish in the fall, and 22% fish in the winter.
- Of those surveyed, **69% fish from shore**, and **64% fish from a motorized boat**.
- **38% rely on what they catch to supplement their diet.**
- **72% regularly share what they catch** with others outside their household.

Phase II: Survey



Overview

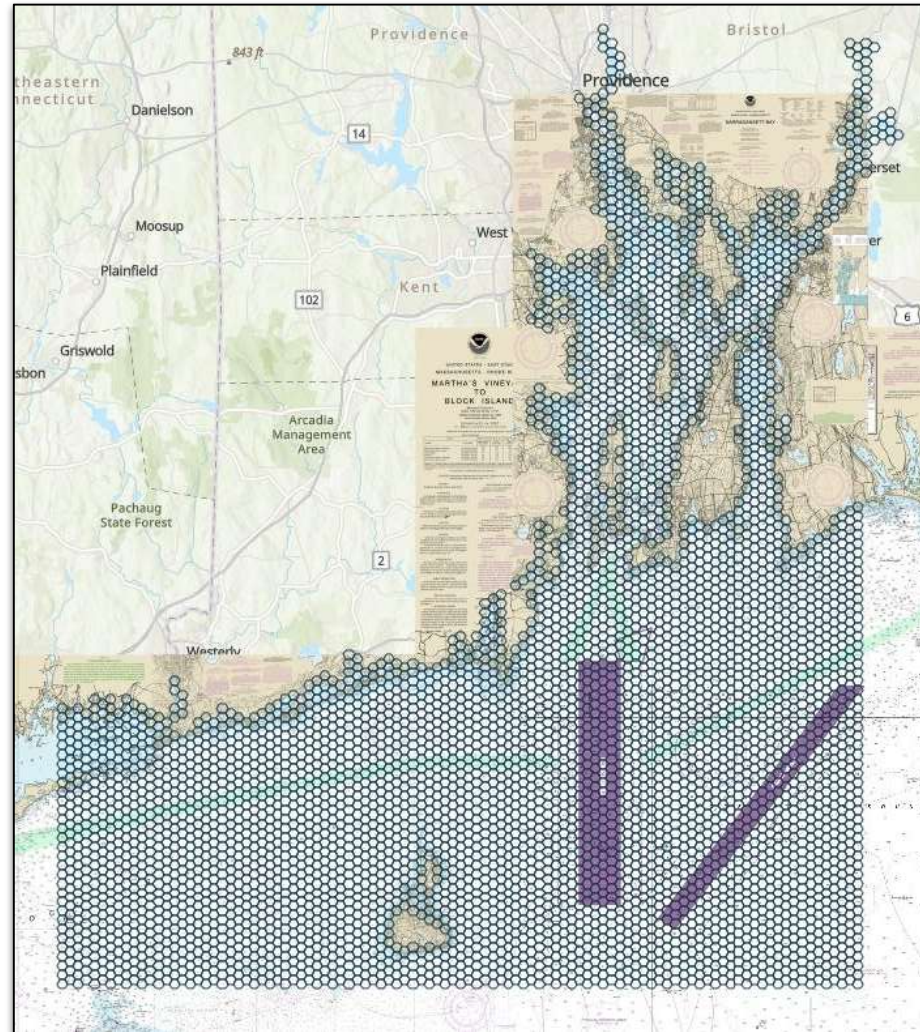
Recreational fishing is an important community and economic activity across Rhode Island. In fact, in 2016, saltwater fishers spent a total of \$103 million in the state (*The Value of Rhode Island's Blue Economy*). This tool was created to identify valued recreational fishing locations in Rhode Island state waters. In combination with other coastal datasets, it serves as a resource for recreational anglers. The tool will also help the state better understand the needs of recreational fishing communities and inform future decision-making on coastal policy and management.



Scan the QR Code to the left to view the storymap and tool, or visit
<https://arcg.is/1rOW0S>

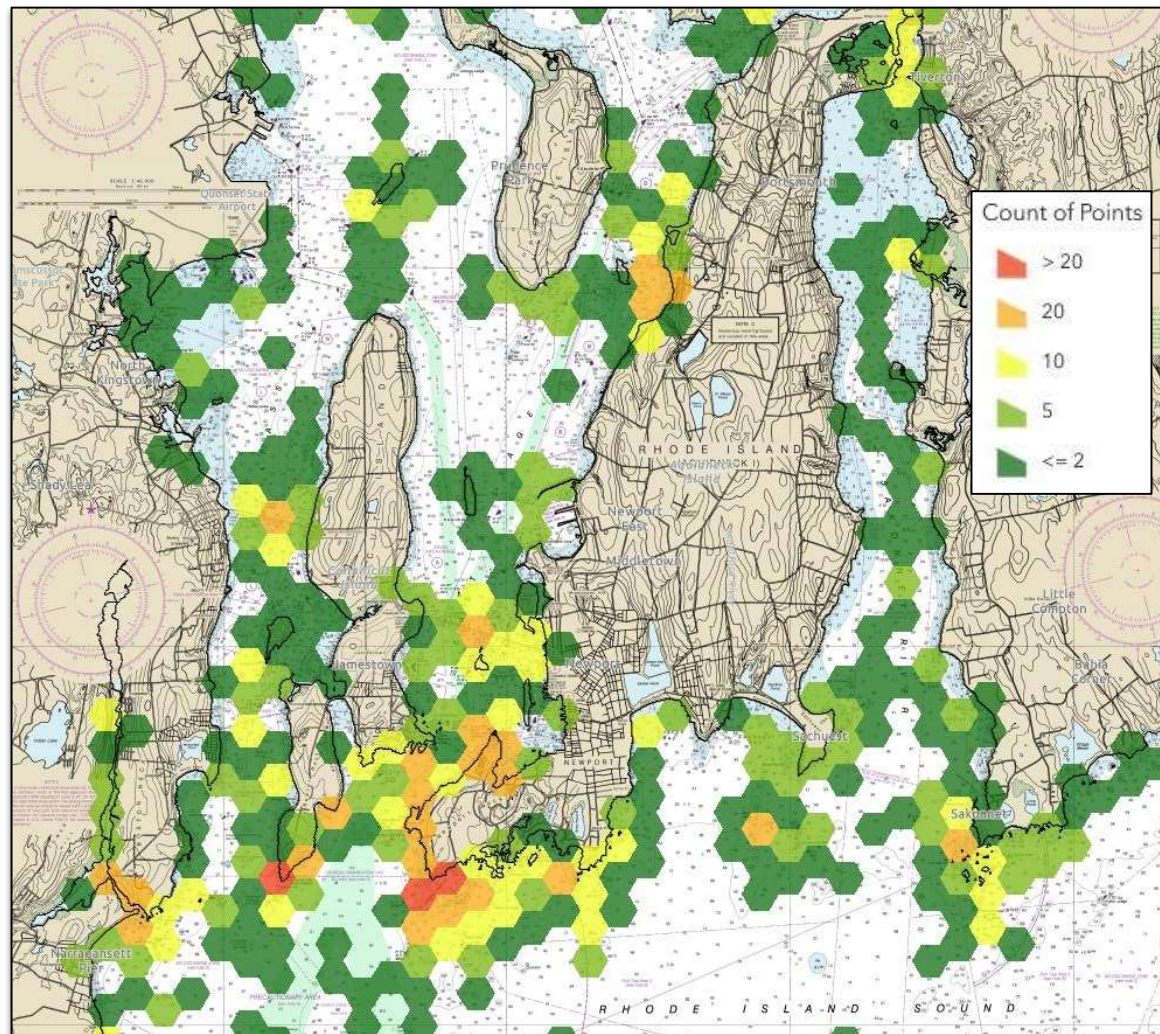
Phase II: Survey

Spatial Survey Extent



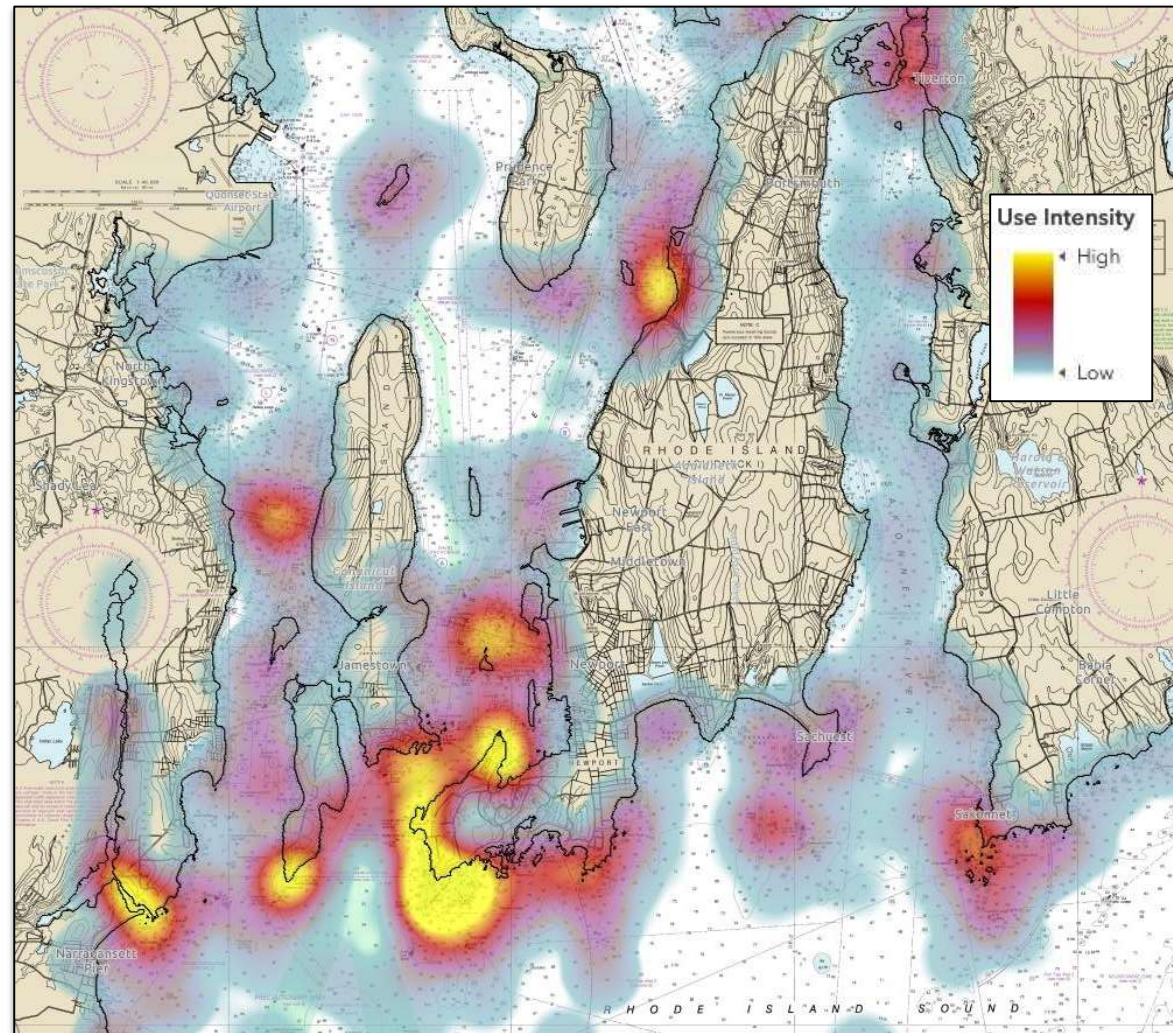
Phase II: Survey

Binned Results



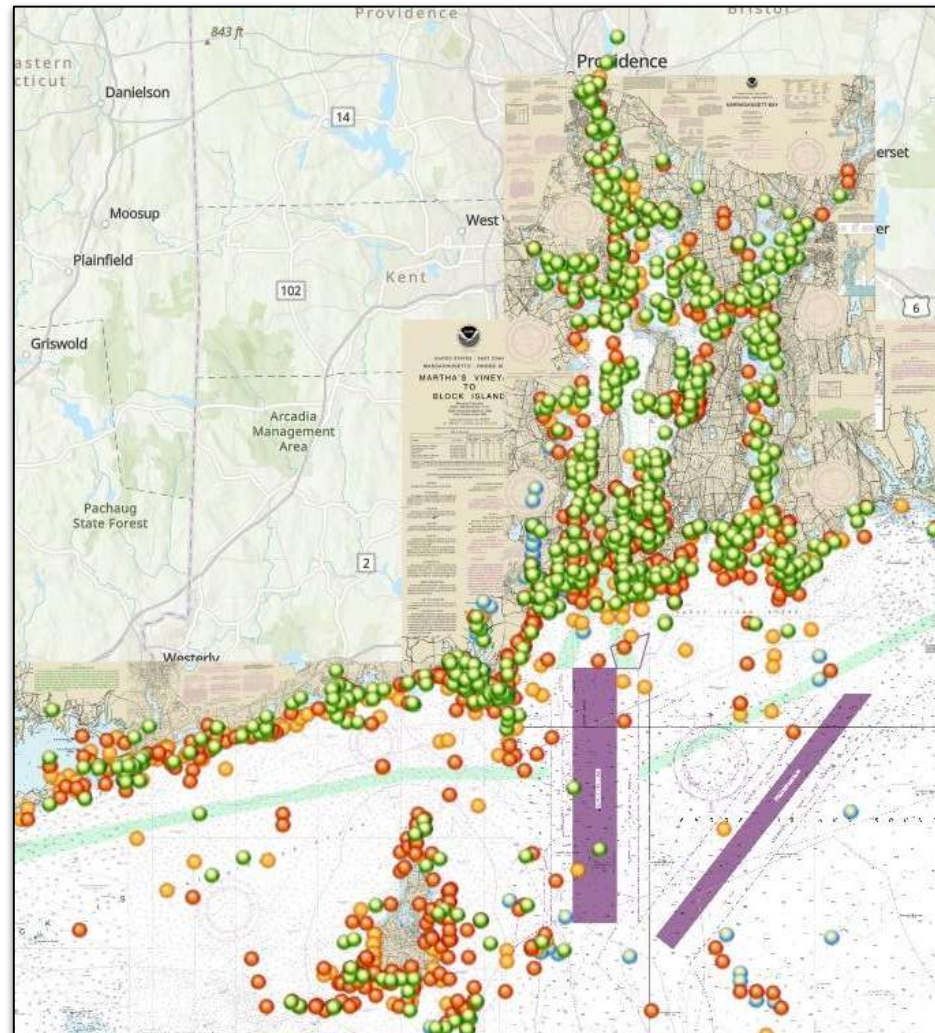
Phase II: Survey

Heat Map



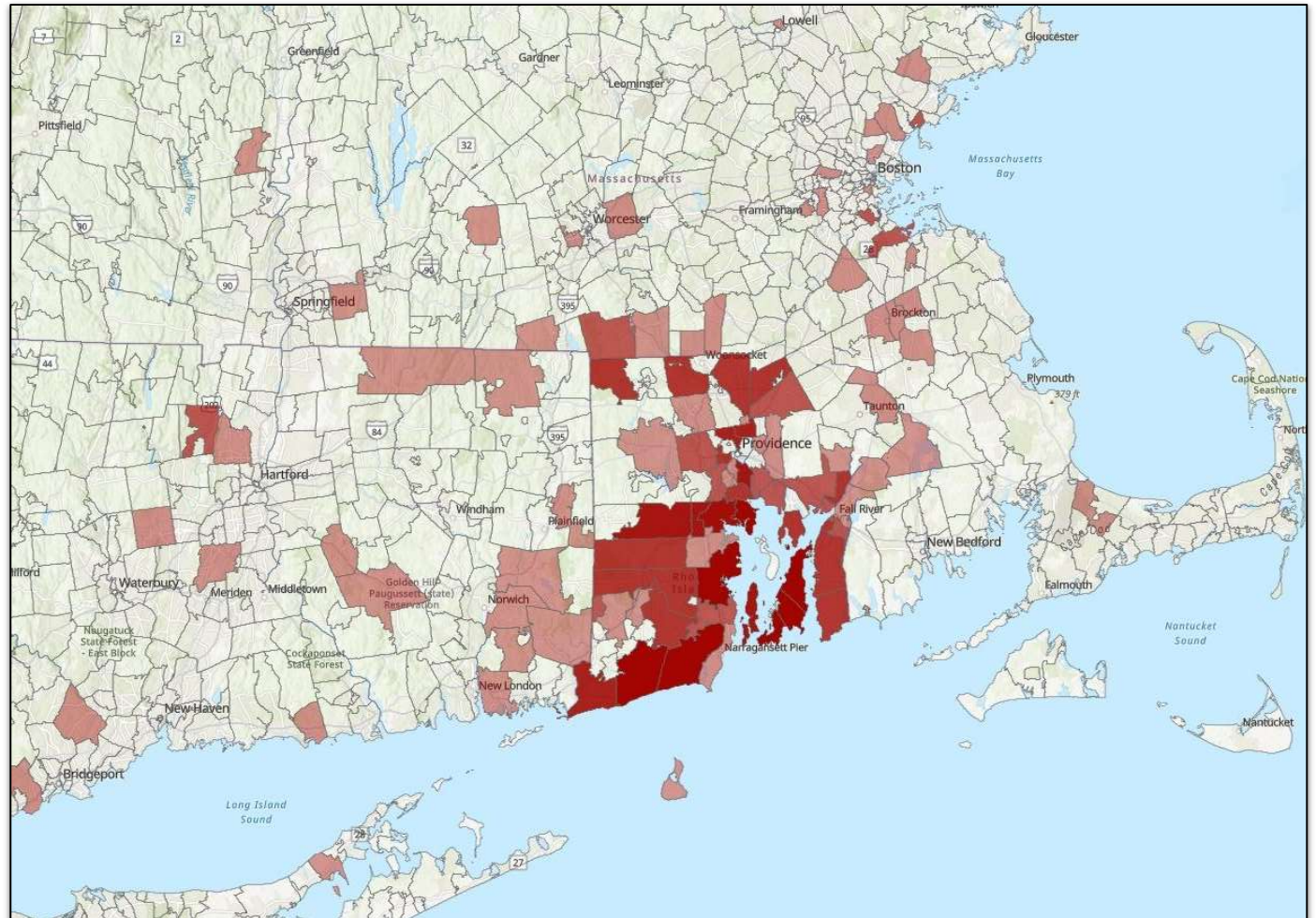
Phase II: Survey

Raw Results by Season



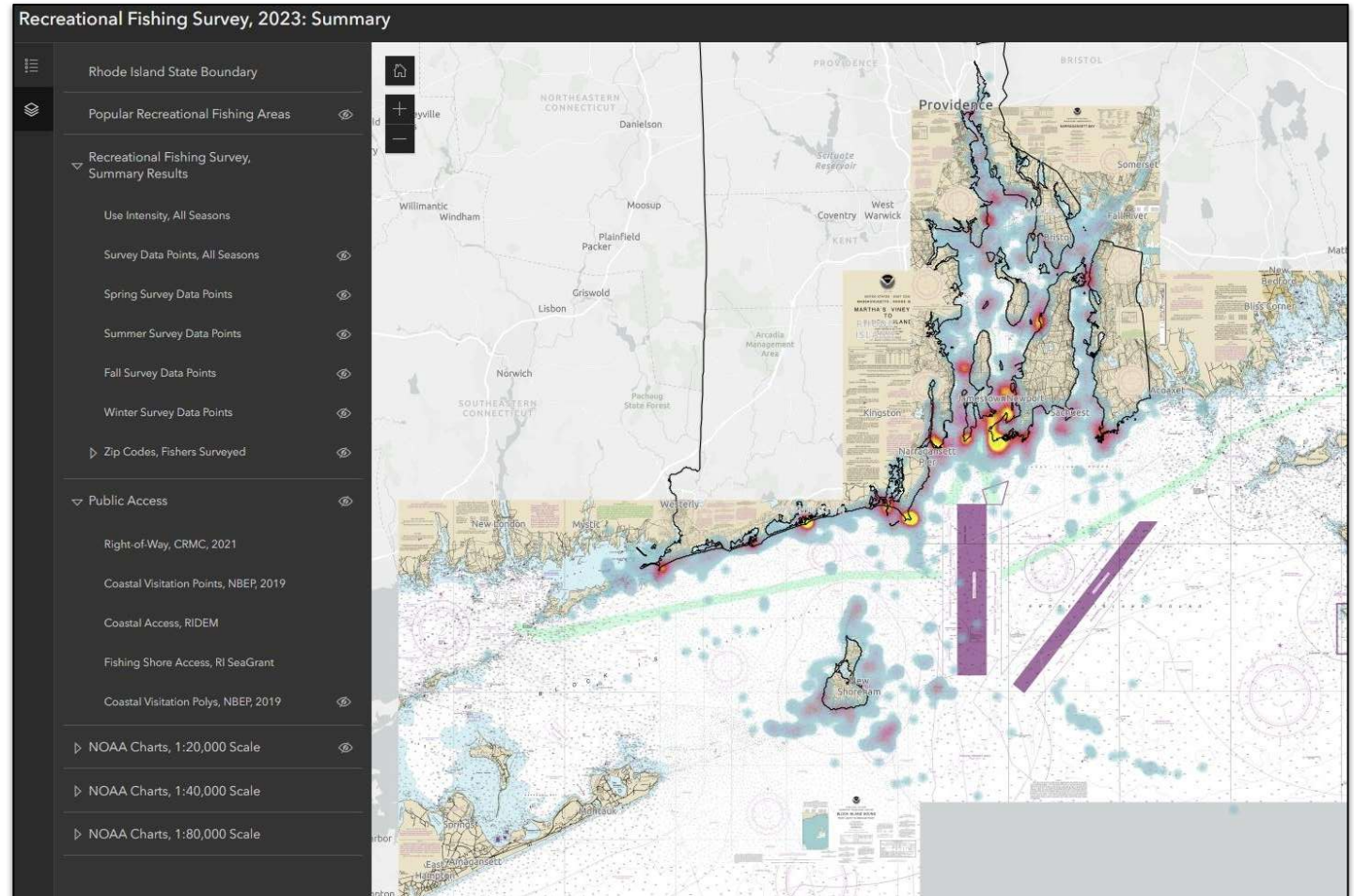
Phase II: Survey

Zip Codes



Phase III: Create and Publish Database

Online Mapping



How the tool is being used

- Incorporated into Rhode Island's aquaculture siting tool
- Data has already been used to advise aquaculture growers to avoid certain areas
- Future project possibilities:
 - Identifying potential fishing locations at risk to sea level rise,
 - research offshore recreational fishing activity,
 - what makes these sites important,
 - And more.

This project is expected to be repeated in 5-10 years to ensure all data is updated.



Scan this QR Code to view the storymap and tool, or visit
<https://arcg.is/1rOW0S>