

# Coastal Education Series

## RICRMP Water Types



**Jeff Willis**  
**Deputy Director**

# CRMC Jurisdiction

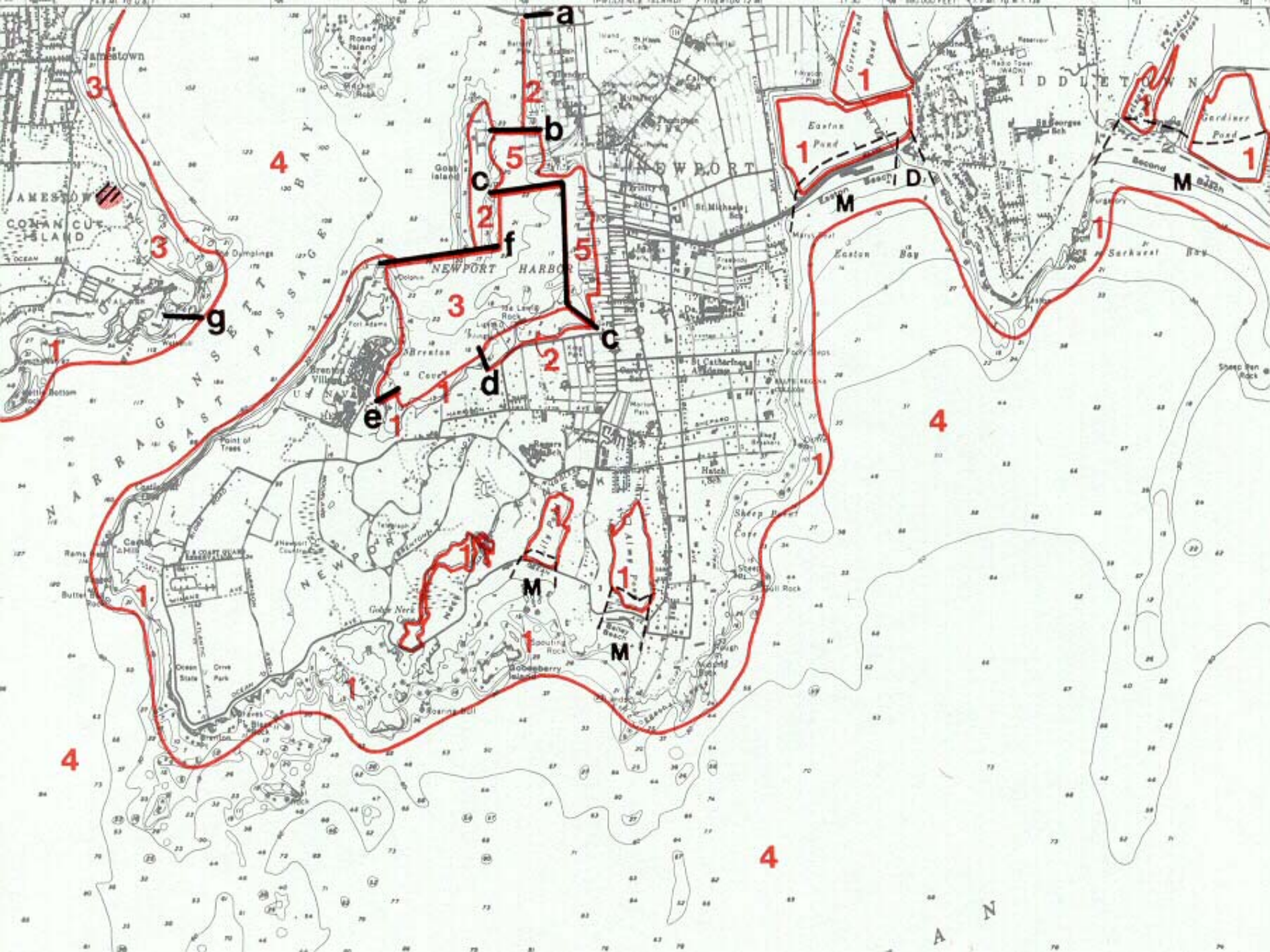
- Inland activities – statewide & regionally - where impacts to the coastal region are likely;
- Anywhere in the 21 coastal towns for federal activities;
- Critical coastal areas defined by Special Area Management Plans (SAMP);
- Freshwater wetlands in the vicinity of the coast;
- 200-foot inland contiguous area measured from a coastal feature;
- **Tidal waters**



# CRMC Water Types

- Type 1 - Conservation Areas
- Type 2 - Low Intensity Use
- Type 3 - High Intensity Boating
- Type 4 - Multi-purpose Water
- Type 5 - Commercial and Recreational Harbors
- Type 6 - Industrial Waterfronts and Commercial Navigation Channels







7-6-96

A5544-12-5



4

4

2

5

2

3

5

3

2

1

1

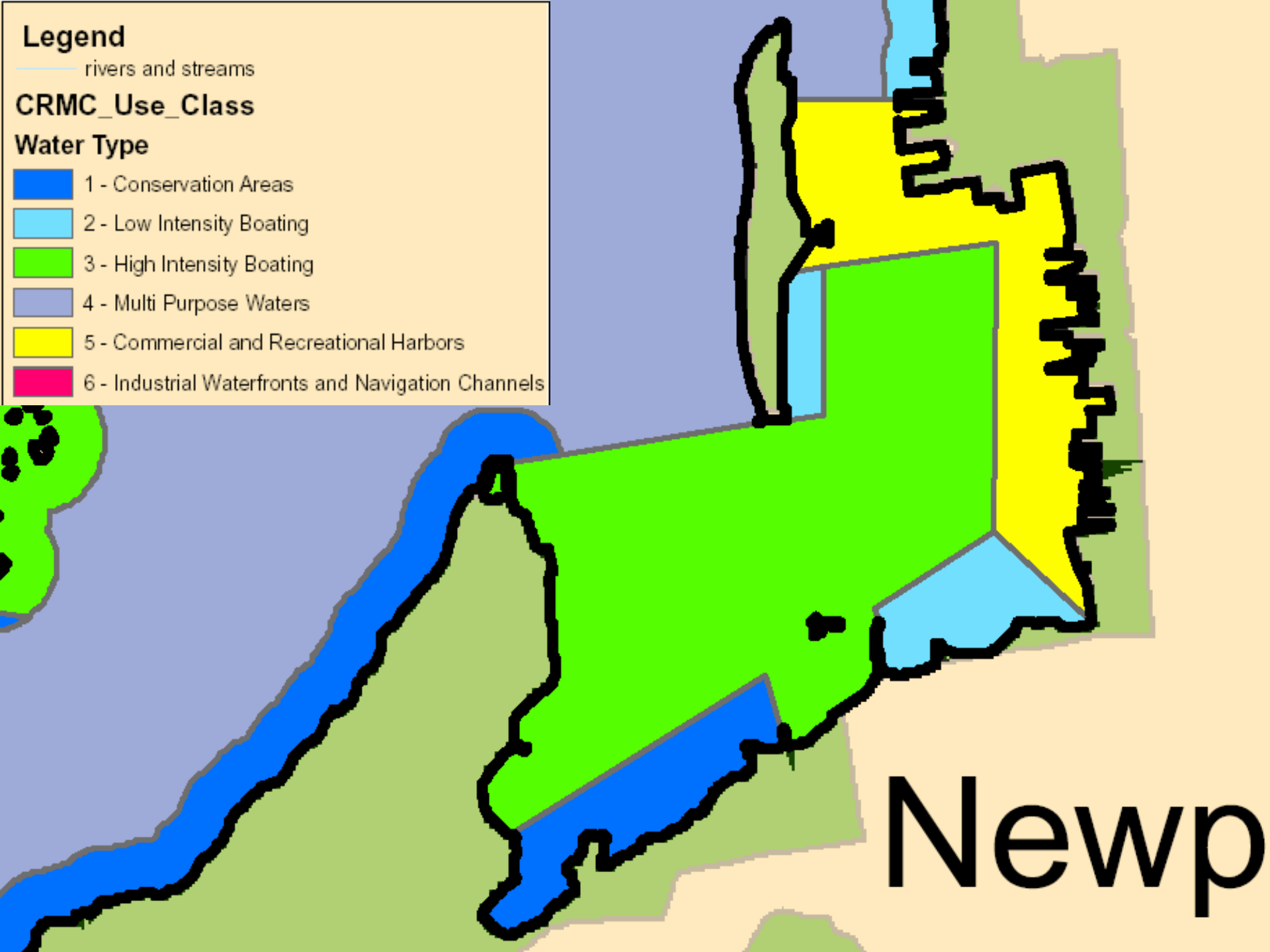
## Legend

— rivers and streams

## CRMC\_Use\_Class

### Water Type

- 1 - Conservation Areas
- 2 - Low Intensity Boating
- 3 - High Intensity Boating
- 4 - Multi Purpose Waters
- 5 - Commercial and Recreational Harbors
- 6 - Industrial Waterfronts and Navigation Channels





## Legend

— rivers and streams

## CRMC\_Use\_Class

### Water Type

- 1 - Conservation Areas
- 2 - Low Intensity Boating
- 3 - High Intensity Boating
- 4 - Multi Purpose Waters
- 5 - Commercial and Recreational Harbors
- 6 - Industrial Waterfronts and Navigation Channels

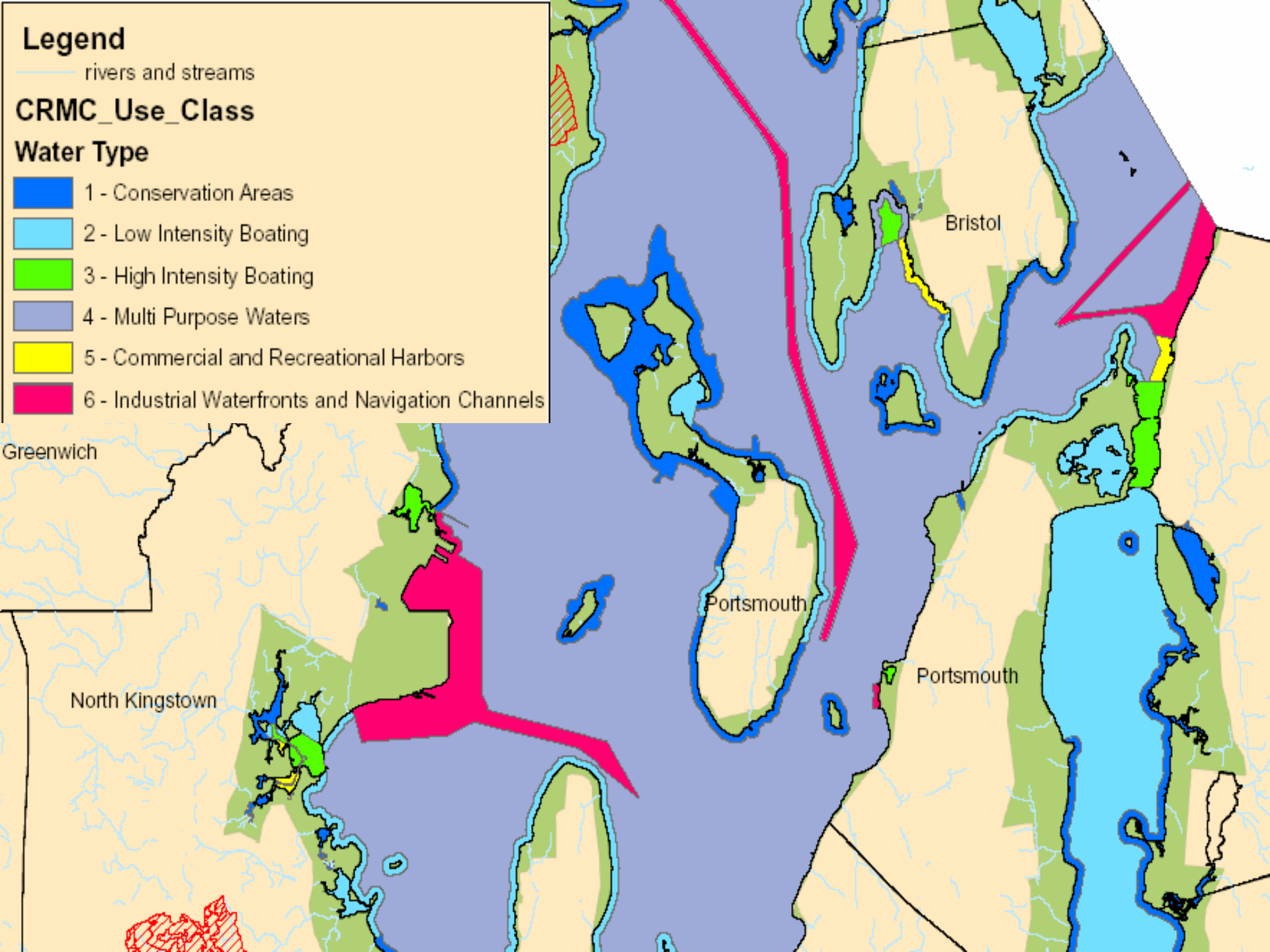
Greenwich

North Kingstown

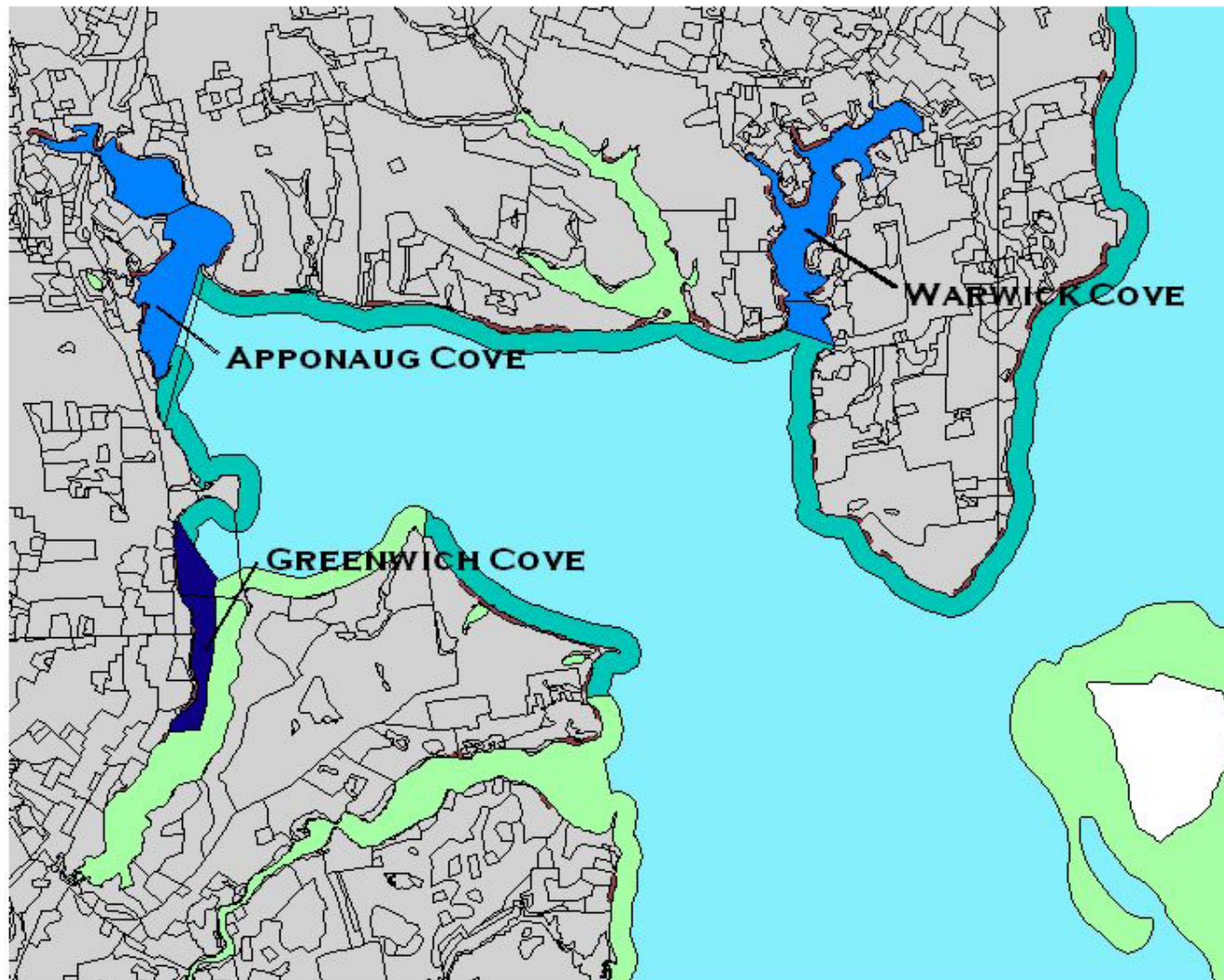
Portsmouth

Portsmouth

Bristol



# CRMC WATER TYPE CLASSIFICATION GREENWICH BAY WATERSHED



## LEGEND

- CRMC WATER CLASSIFICATIONS
- 1: CONSERVATION AREAS
  - 2: LOW-INTENSITY BOATING
  - 3: HIGH-INTENSITY BOATING
  - 4: MULTIPURPOSE WATERS
  - 5: COMM/RECREATIONAL
  - 6: INDUSTRIAL/COMM

HARDENED SHORELINE

**RIGIS**

**CRMC**  
Cape Cod Regional Management Council



# Type 1 Conservation Areas

- **Section 200.1.A. Definition**
  - (1) water areas that are within or adjacent to the boundaries of designated wildlife refuges and conservation areas,
  - (2) water areas that have retained natural habitat or maintain scenic values of unique or unusual significance, and
  - (3) water areas that are particularly unsuitable for structures due to their exposure to severe wave action, flooding, and erosion.

















10/19/2000 11:04



# Type 1 Conservation Areas

- Section 200.1.C. Policies

- The Council's goal is to preserve and protect Type 1 waters from activities and uses that have the potential to degrade scenic, wildlife, and plant habitat values, or which may adversely impact water quality or natural shoreline types.
- *Activities and alterations which detract from the above are generally prohibited*







# Type 2 Low Intensity Use

- **Section 200.2.A. Definition**

- This category includes waters in areas with high scenic value that support low-intensity recreational and residential uses. These waters include seasonal mooring areas where good water quality and fish and wildlife habitat are maintained.



# Type 2 Low Intensity Use

- Section 200.2.C. Policies
  - The Council's goal is to maintain and, where possible, **restore the high scenic value, water quality, and natural habitat values** of these areas, *while providing for low-intensity uses that will not detract from these values.*



# Low Impact Recreation















30 yds



# Type 1 Conservation Areas

- Section 200.1.C. Policies
  - The Council's goal is to **preserve and protect** Type 1 waters from activities and uses that have the potential to degrade **scenic, wildlife, and plant habitat values**, or which may adversely impact water quality or natural shoreline types.
  - *Activities and alterations which detract from the above are generally prohibited*



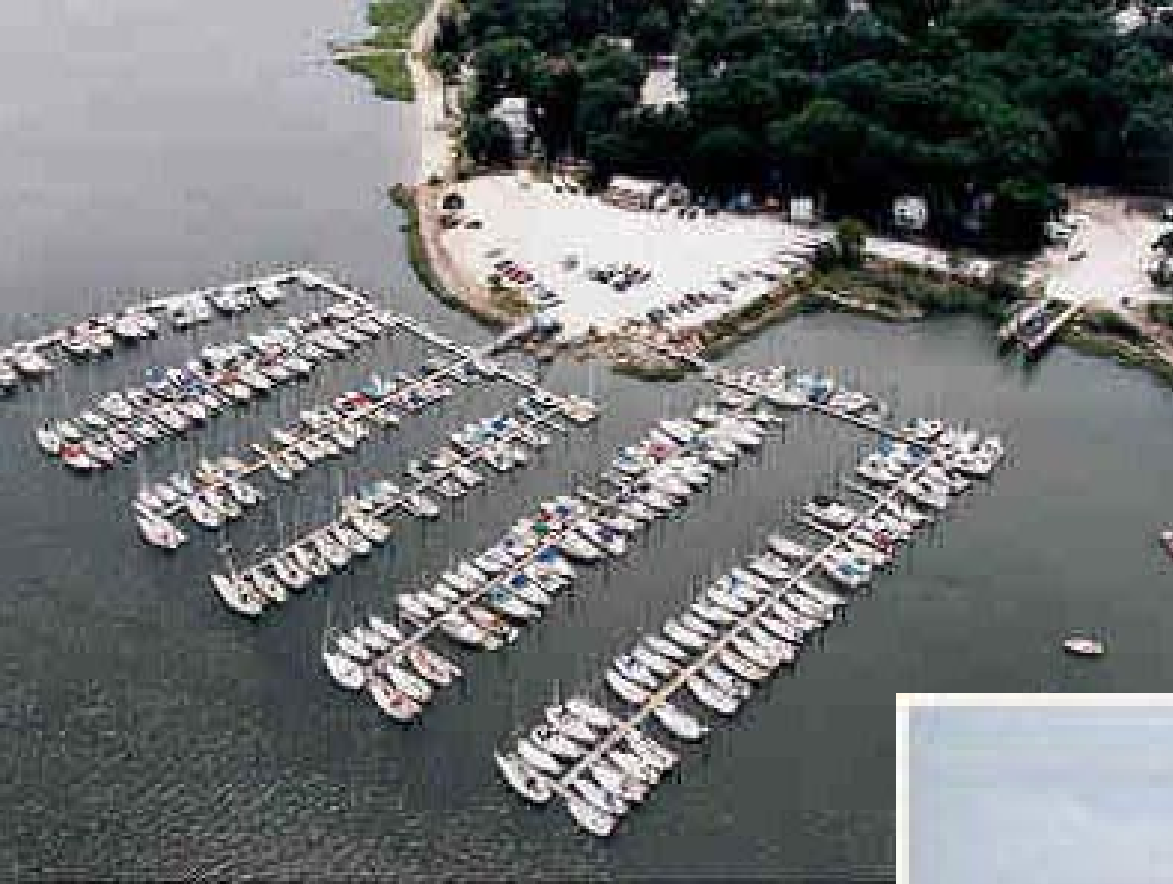
# Type 1 and Type 2 Waters

- Over 71% of the state's shoreline is comprised of either Type 1 or Type 2 waters
- Therefore 299 miles - out of 420 - receive the program's highest management protection available

# Type 3 High Intensity Boating

- **Section 200.3.A Definition**
  - This category includes intensely utilized water areas where recreational boating activities dominate and where the adjacent shorelines are developed as marinas, boatyards, and associated water-enhanced and water-dependent businesses.





**Commercial**















# Type 3 High Intensity Boating

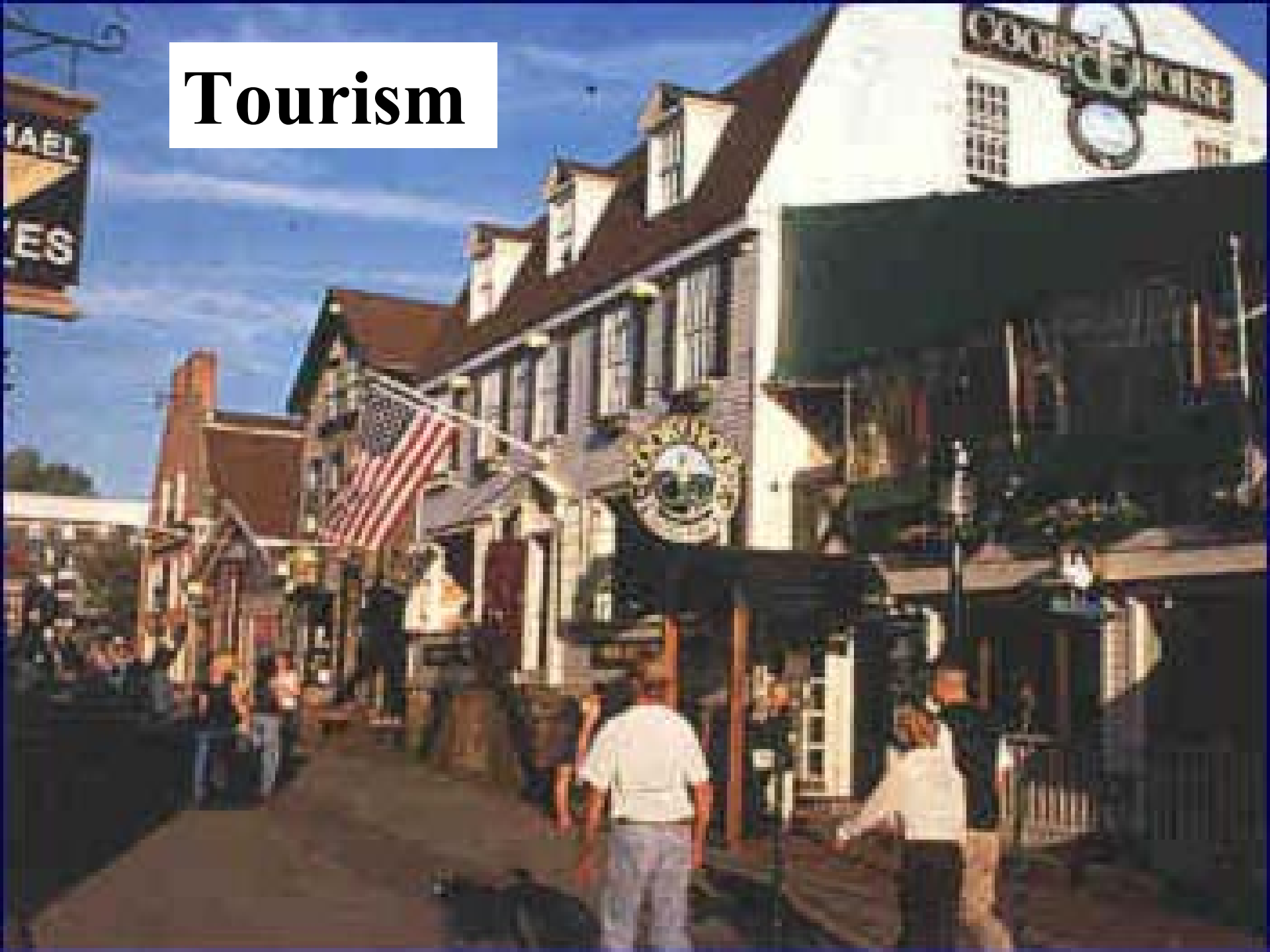
- Section 200.3.C Policies
  - The Council's goal is to **preserve, protect, and, where possible, enhance** Type 3 areas for high-intensity boating and the services that support this activity. *Other activities and alterations will be permitted to the extent that they do not significantly interfere with recreational boating activities or values.*

# Type 5 Commercial & Recreational Harbors

- **Section 200.5.A. Definition**
  - These waters are adjacent to waterfront areas that support a variety of tourist, recreational, and commercial activities. They include all or portions of the following harbor areas:
    - Newport Harbor
    - Bristol Harbor
    - Warren waterfront
    - Wickford Harbor
    - Old Harbor, Block Island
    - East Greenwich Harbor
    - Watch Hill Harbor



# Tourism

























# Type 5 Commercial & Recreational Harbors

- Section 200.5.C. Policy
  - The Council's goals are to *maintain a balance* among diverse port-related activities, including recreational boating, commercial fishing, restaurants, and other water-enhanced businesses; to *promote the efficient use of space*; and to *protect the scenic characteristics that make these areas valuable to tourism*.



# Type 6 Industrial Waterfront & Commercial Navigation Channels

- Section 200.6.A. Definitions
  - These water areas are *extensively altered in order to accommodate commercial and industrial water-dependent* and water-enhanced activities. They include all or portions of the following areas:
    - Port of Providence
    - Tiverton shipping area
    - Quonset Point / Davisville
    - Coddington Cove
    - Melville
    - Galilee and Jerusalem
    - Westerly waterfront



















E CARL RICE JR

43199

531996

ZELLA



# Type 6 Industrial Waterfront & Commercial Navigation Channels

- Section 200.6.C. Policies
  - Highest priority uses of Type 6 waters and adjacent lands under Council jurisdiction are: (a) berthing, loading and unloading, and servicing of commercial vessels; (b) construction and maintenance of port facilities, navigation channels, and berths; and (c) construction and maintenance of facilities required for the support of commercial shipping and fishing activities.
  - *The Council shall prohibit activities that substantially detract from or interfere with these priority uses.*

# Type 4 Multipurpose Waters

- Section 200.4.A. Definition
  - large expanses of *open water in Narragansett Bay and the Sounds* which support a variety of commercial and recreational activities while maintaining good value as a fish and wildlife habitat; and
  - *open waters adjacent to shorelines* that could support water-dependent commercial, industrial, and/or high-intensity recreational activities.



# Type 4 Multipurpose Waters

- Section 200.4.C. Polices
  - The Council's goal is to maintain a balance among the diverse activities that must co-exist in Type 4 waters.

## West Side Aquidneck Island

Boopair Island  
Hope Island

Pendence Island

Dyer Island

Rhodell Island

Conanicut Island

Gould Island

2

4

3

6

4

6

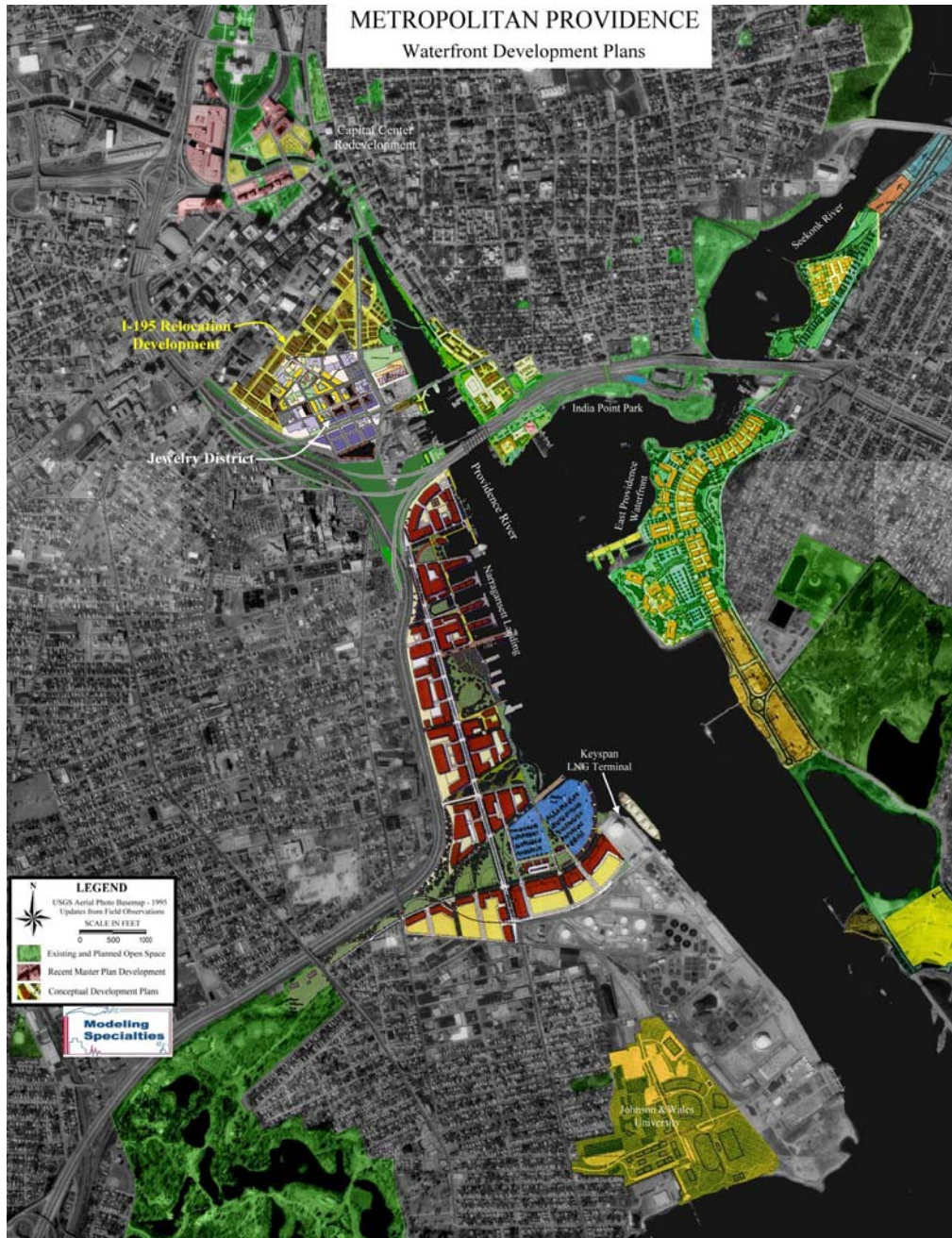


# Special Area Management Plans

- **Aquidneck Island SAMP**
  - Assessing municipal land use visions relative to the excise of federal lands and coastal zone management policies
- **Metro Bay SAMP**
  - Assessing water type designation policies relative to municipal land use visions

## METROPOLITAN PROVIDENCE

### Waterfront Development Plans



# Proposed Municipal Redevelopment Plans

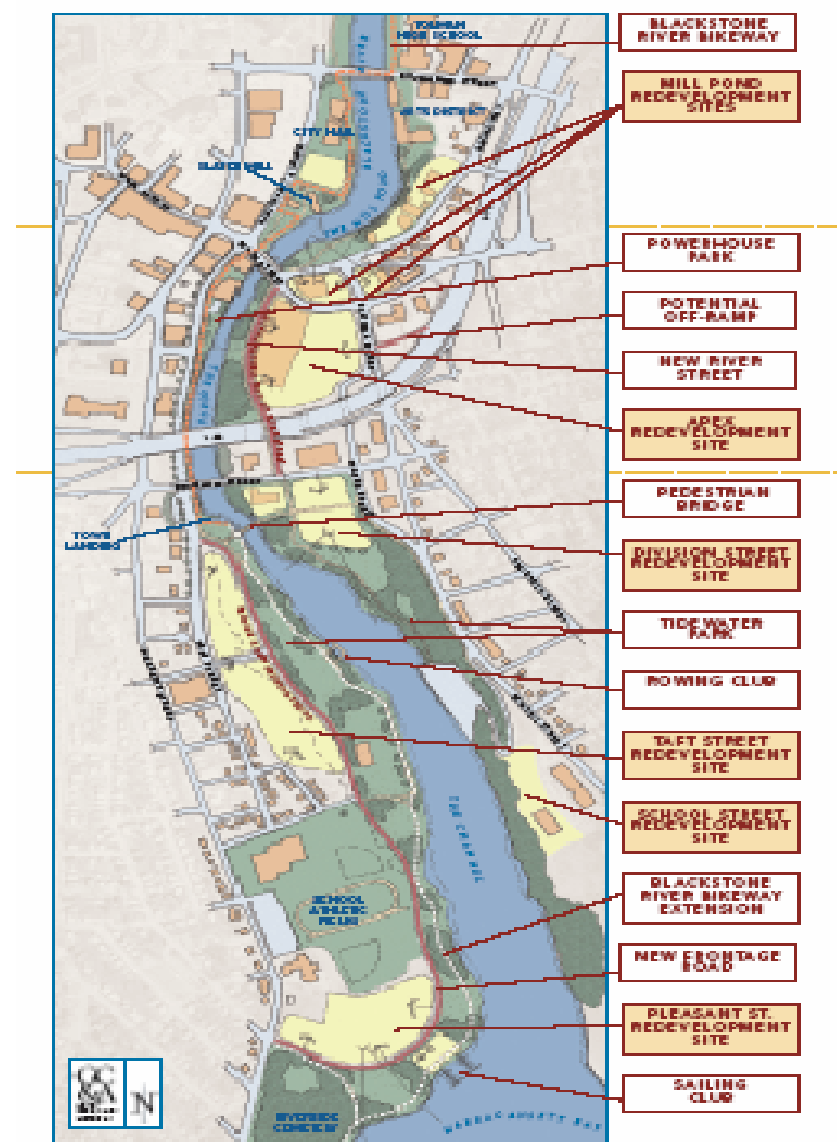






***East Providence Waterfront  
Special Development Zone***

## PROPOSED



***Pawtucket Redevelopment  
Strategy for Seekonk River***



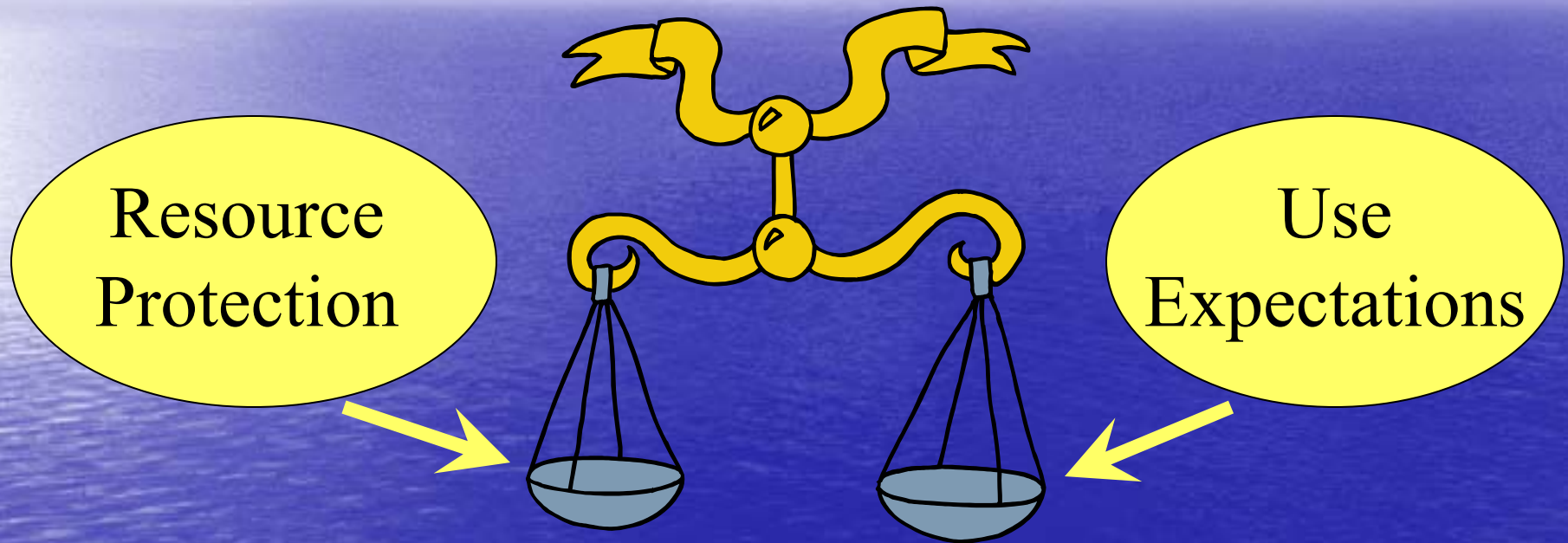
# Salt Pond Region SAMP



# Coastal Zone Management



# Coastal Zone Management



**Balance**